

Photograph of fog horn house at Grosse Point Lighthouse
taken May 21, 1996. Photo by D.J. Terras.





Photograph of fog horn house at Grosse Point Lighthouse
ca. 1900.

U. S. LIGHT-HOUSE ESTABLISHMENT.

1873.

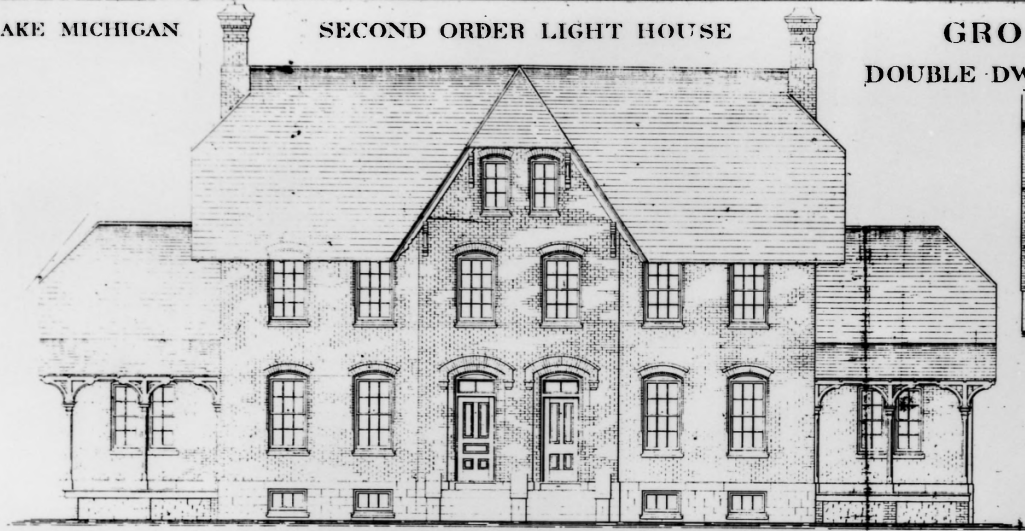


Woodburytype.

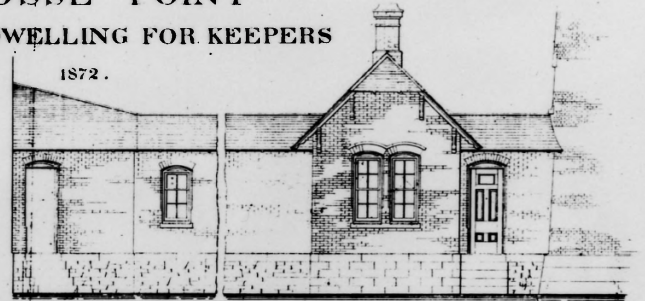
Am. Photo-Relief Printing Co., Philada.

LAKE COAST LIGHT-HOUSE AT GROSSE POINT,
LAKE MICHIGAN, ILLINOIS.

Official U.S. Lighthouse Establishment depiction of Grosse Point Lighthouse, as built in 1873. The configuration of these buildings remains the same after nearly 125 years. (Photo from National Archives)

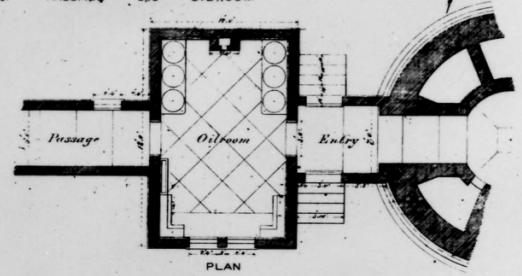


FRONT ELEVATION

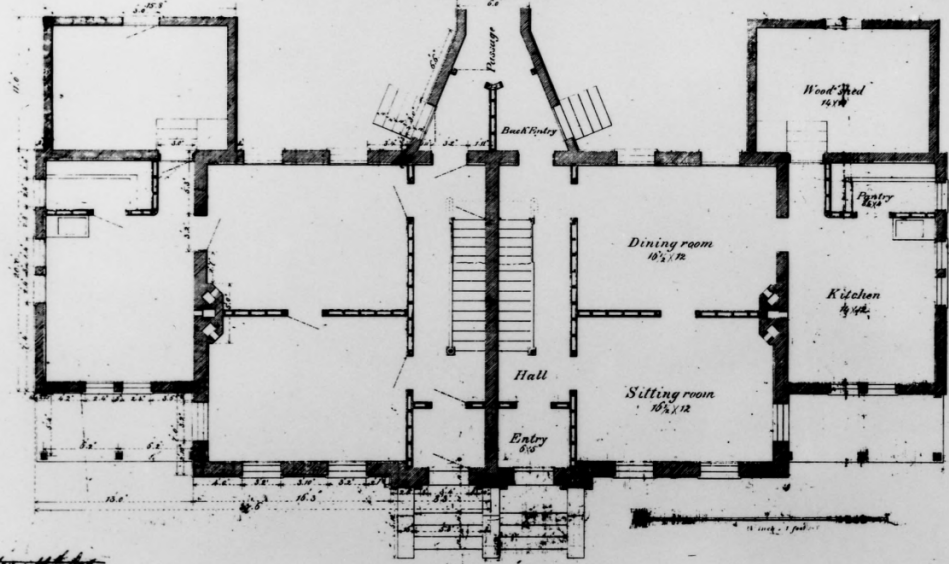


1872.

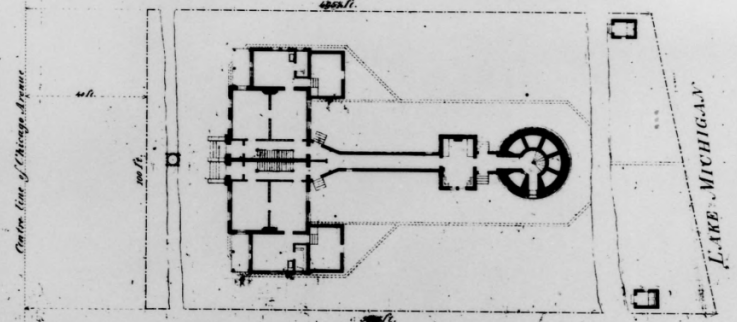
ELEVATION of PASSAGE and OIL ROOM



PLAN



FIRST STORY PLAN



Center line of Chicago Avenue.

LAKE MICHIGAN

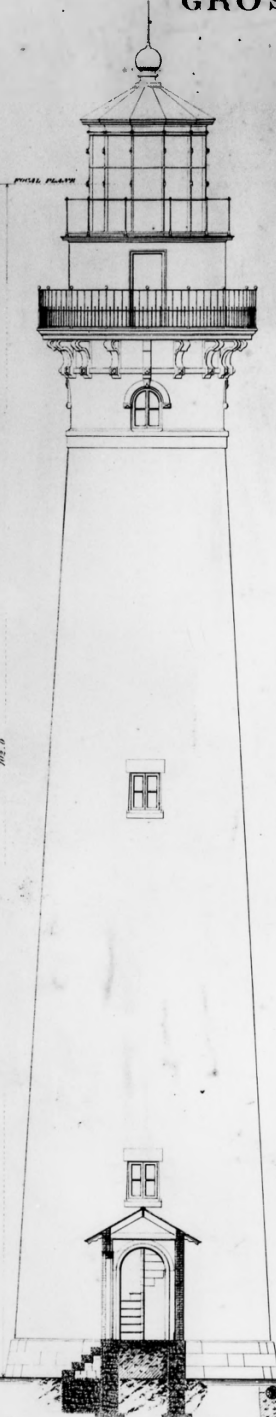
Arrangement of Buildings.
 Submitted with my letter of June 7th 1872 # 2925.
 O. M. Poe
 Mayor of Grosse Pointe, Michigan
 Care of Post Office, Detroit.

Keepers' quarters, passageway, and oil room design from O.M. Poe's original drawings, 1872.

Established: 1 Mar. '74-

SECOND ORDER LIGHT HOUSE.
GROSSE POINT, ILLINOIS.
TOWER.

1872.

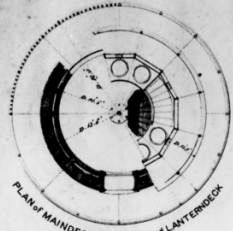


PIECE PLATE

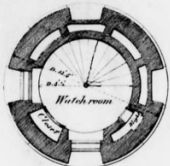
10 1/2'



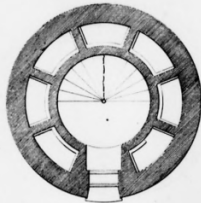
ELEVATION SECTION on true hd



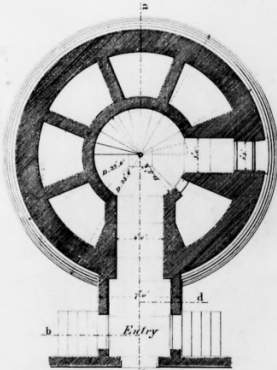
PLAN of MAIN DECK, PARAPET and LANTERN DECK



PLAN of LAST LANDING

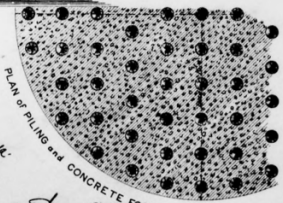
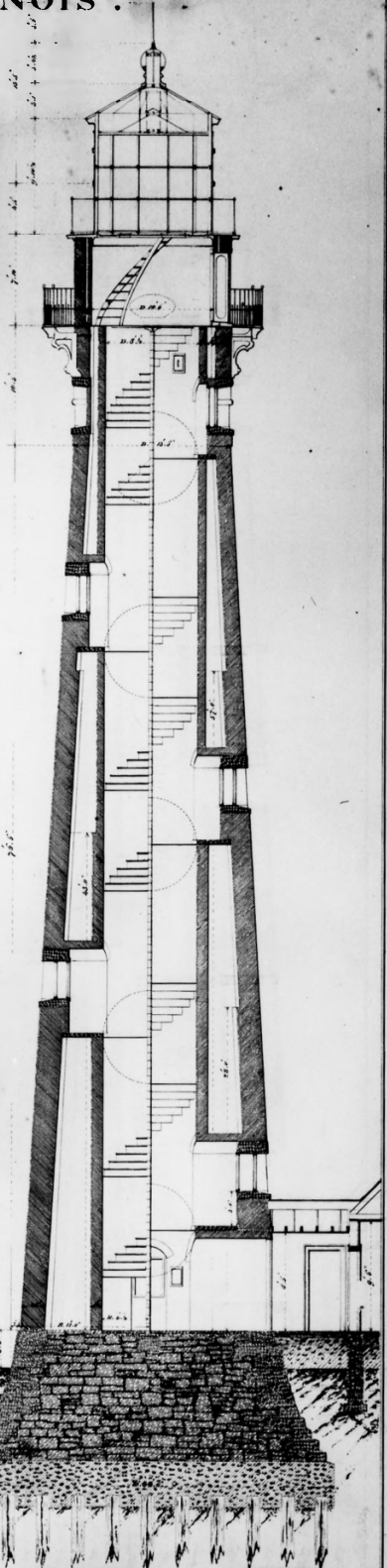


THIRD LANDING



GROUND PLAN

Entry



PLAN of PILING and CONCRETE FOOTING

X 5/8

Approved with my letter dated June 7th 1872

C. M. Poe
Major Eng. U.S. Army
Eng. in Charge

Scale: 1/4" = 1 foot

Cross-section of Grosse Point's light tower from O.M. Poe's original drawings, 1872.



Keeper E.J. Moore operating Grosse Point's clockwork mechanism ca. 1910. Also, color photo of same mechanism today. This device was used to produce Grosse Point's distinctive signal (see nomination form). Color photo by D.J. Terras.



Historical photo of Grosse Pointe's
light tower under construction, ca. 1873.



Historical photo of Grosse Point's keepers' quarters under construction, ca. 1873.

1873.



Woodburytype.

LAKE COAST LIGHT-HOUSE AT GROSSE POINT,

LAKE MICHIGAN, ILLINOIS.

Am. Photo-Relief Printing Co., Philada.

Official U.S. Lighthouse Establishment depiction of Grosse Point Lighthouse. Construction of Grosse Point Lighthouse took place during September and November of 1872 and through the building season in 1873. The light, however, was not illuminated until March 1, 1874.