



LITTLE EIK Farm CE-171

101 9 5 1968

Cecil County
Michael Bourne
Neg. loc. at MHT
1968

East facade - exterior view.



Little Elk Creek Farm

CE-170

Cecil County

from South East

APR 25 1979

Elizabeth E. Booth, 3/1/79

Neg. at EEB 's Deep Run Farm, Elkton

MAY 9 1979



Little Elk Creek Farm CE-170

Cecil County

APR 25 1979

From South

Elizabeth E. Booth, 3/1/79

Neg. at EEB's Deep Run Farm, Elkton

MAY

9 1979



LittleElk Creek Farm CE-170APR 25 1979

Cecil County

View of East side from side yard

Elizabeth E. Booth, 3/1/79

Neg. at EEB's Deep Run Farm, Elkton

MAY 9 1979



Little Elk Creek Farm

CE-170

Cecil County

North Providence, Maryland or Rock Church

South Facade

Paul Touart, 3/70

Neg. at MHT

APR 25 1979

MAY 9 1979



Little Elk Creek Farm

CE-170

Cecil County

APR 25 1979

From east from drive

Elizabeth E. Booth 3/1/79

Neg. at EEB's Deep Run Farm, Elkton

MAY 9 1979



Little Elk Creek Farm CE-170

Cecil County

North Elevation

Paul Touart, 3/79

Neg. at MHT

RR 25 1979

9



Little Elk Creek Farm

CE-170

Cecil County

North Providence, Md. or Rock Church

South Shed

Paul Touart, 3/79

Neg. at MHT

MAY

9

1979

APR 25 1979



Little Elk Creek Farm

CE-170

Cecil County

Stairs, first floor from porch

Elizabeth E. Booth, 3/1/79

EEB has neg at Deep Run Farm, Elkton, Md.

MAY 9 1979

APR 25 1979



Little Elk Creek Farm

CE-170

Cecil County

Stair detail, first floor

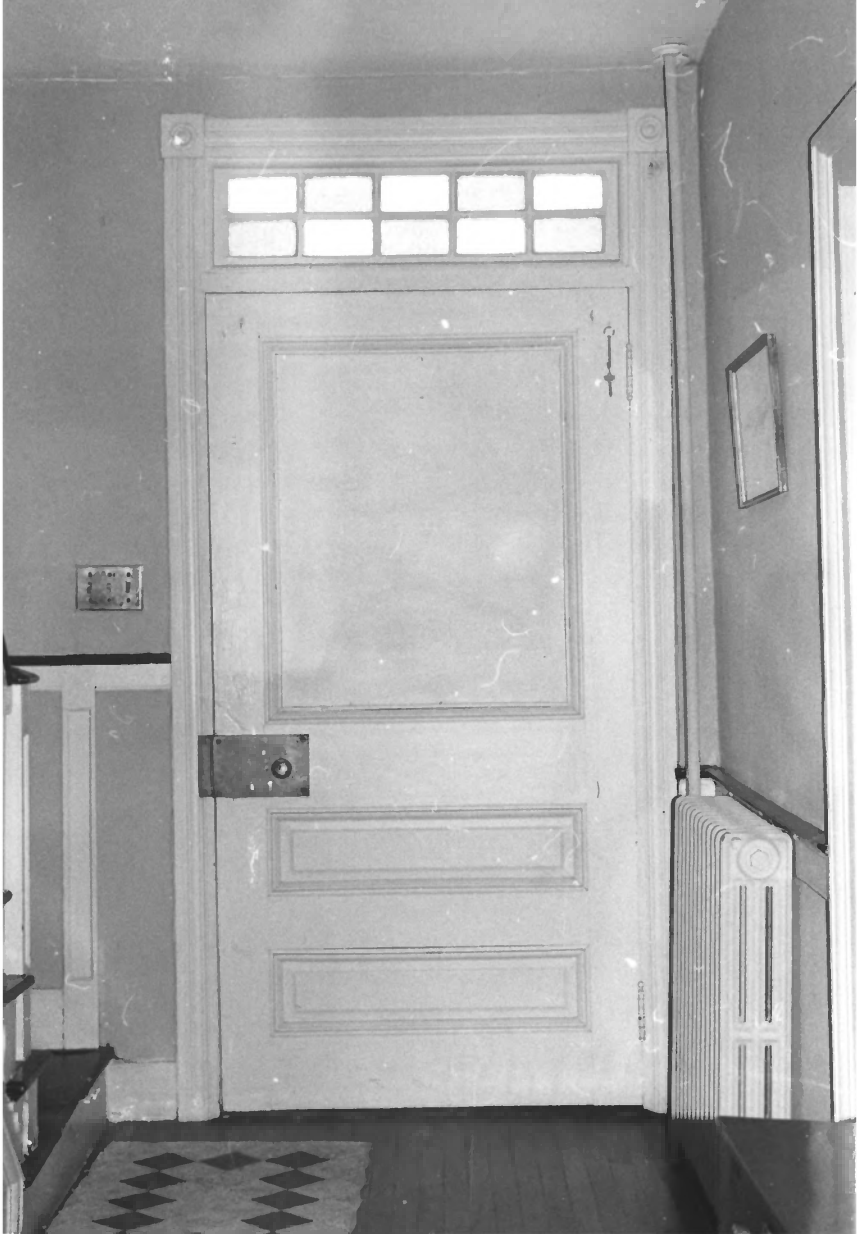
Elizabeth E. Booth 3/1/79

Neg. at EEB's Deep Run Farm, Elkton, Md.

MAY

9 1979

APR 25 1979



Little Elk Creek Farm

CE-170

Cecil County

Inside front door

Elizabeth E. Booth, 3/1/79

Neg. at EEB's Deep Run Farm, Elkton, Md.

MAY 9 1979

APR 25 1979



Little Elk Creek Farm

CE-170

Cecil County

Living Room mantel from SE corner

Elizabeth E. Booth 3/1/79

Neg. at EEB's Deep Run Farm, Elkton, Md.

MAY

-9 1979

APR 25 1979