



STILLWATER FIRE DEPARTMENT  
STATION No. 2

CAMPUS  
FIRE STATION

Campus Fire Station

Payne County, OK

Jim Gilbert

October, 2003

SHPO

main facade, facing north

1/11



Campus Fire Station

Payne County, OK

Jim Gabbert

October 2003

SHPO

South + East elevations - Facing northwest  
~~East + North elevations, north wing - Facing SW.~~

3/11



ST. JOHN'S EPISCOPAL CHURCH

BUS STOP

Campus Fire Station

Payne County, OK

Jim Gabbert

October 2003

SHPO

East and north elevations, north wing - facing southwest

3/11



Campus Fire Station

Payne County, OK

Jim Gabbert

October 2008

SHPO

Tower, west side - Facing east

4/11





Campus Fire Station

Payne County, OK

Jim Hubbard


October 2003

SHPO

Detail - north wing entry  
~~se elevation plaque~~

Facing south  
~~facing north~~

5/11



MEN RESEMBLE  
GODS IN NOTHING  
SO MUCH AS IN  
DOING GOOD TO  
THEIR FELLOW  
CREATURES.

CICERO

**FIRE**

Campus Fire station

Payne County, OK

Jim Gabbert

October 2003

SHPO :

Detail - S. elevation Payne - Facing north

6/11 -

FEDERAL WORKS AGENCY  
PUBLIC WORKS ADMINISTRATION

JOHN M. CARMODY  
FEDERAL WORKS ADMINISTRATOR

FRANKLIN D. ROOSEVELT  
PRESIDENT OF THE UNITED STATES

FIRE SERVICE TRAINING SCHOOL  
1939

Campus fire Station

Payne County, OK

Jim Gubbert

October 2003

SHPO

Detail - Bronze Plaque - facing North

7/11



STILLWATER

Campus Fire Station

Payne County, OK

Jim Gabbert

October 2003

SHPO

Garage Bay, Facing N.E.

8/11





Campus Fire Station

Payson County, OK

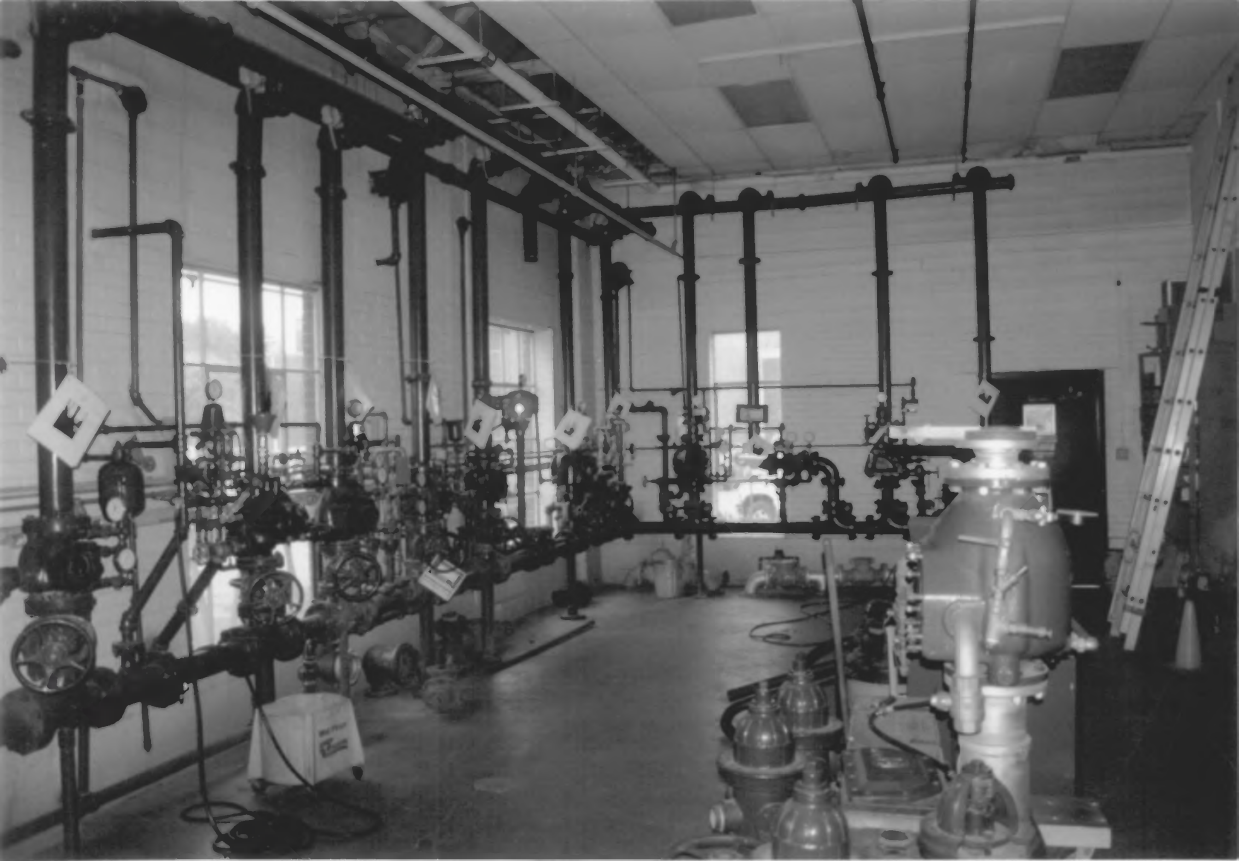
Jim Gabbant

Oct. 2003

SHPO

Door Detail, west exterior wall, facing west

9/11



Campus Fire Station

Payne County, OK

Jim Gabbard

October 2003

SHPO :

Lab Room, north wing - Facing north northwest

10/11



Campus Fire Station

Payne County, Ok

Jim Gubbert

Oct. 2003

SHO

Work Area, west wall - Facing SW

11/11