

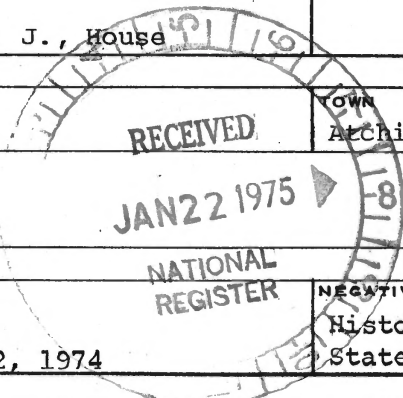


UNITED STATES DEPARTMENT OF THE INTERIOR  
NATIONAL PARK SERVICE

NATIONAL REGISTER OF HISTORIC PLACES  
PROPERTY PHOTOGRAPH FORM

(Type all entries - attach to or enclose with photograph)

1. NAME		
COMMON	AND/OR HISTORIC	NUMERIC CODE (Assigned by NPS)
	Harwi, A. J., House	MAY 6 1975
2. LOCATION		
STATE	COUNTY	TOWN
Kansas	Atchison	Atchison
STREET AND NUMBER		
1103 Atchison St.		
3. PHOTO REFERENCE		
PHOTO CREDIT	DATE	NEGATIVE FILED AT
Staff, Kansas State Historical Society	October 2, 1974	Historic Sites Survey, Kansas State Historical Society
4. IDENTIFICATION		
DESCRIBE VIEW, DIRECTION, ETC.		



View of the A. J. Harwi house from the southeast. Located on the east wall (in the center of this view) is one of the house's unusual features, the stained glass window set into the chimney.

# 1034

PROPERTY OF THE NATIONAL REGISTER



UNITED STATES DEPARTMENT OF THE INTERIOR  
NATIONAL PARK SERVICE

**NATIONAL REGISTER OF HISTORIC PLACES  
PROPERTY PHOTOGRAPH FORM**

*(Type all entries - attach to or enclose with photograph)*

**1. NAME**

COMMON

AND/OR HISTORIC

NUMERIC CODE (Assigned by NPS)

Harwi, A. J., House

MAY 6 1975

**2. LOCATION**

STATE

COUNTY

TOWN

Kansas

Atchison

Atchison

STREET AND NUMBER

1103 Atchison Street

**3. PHOTO REFERENCE**

PHOTO CREDIT

DATE

NEGATIVE FILED AT

Staff, Kansas State  
Historical Society

October 2, 1974

Historic Sites Survey, Kansas  
State Historical Society

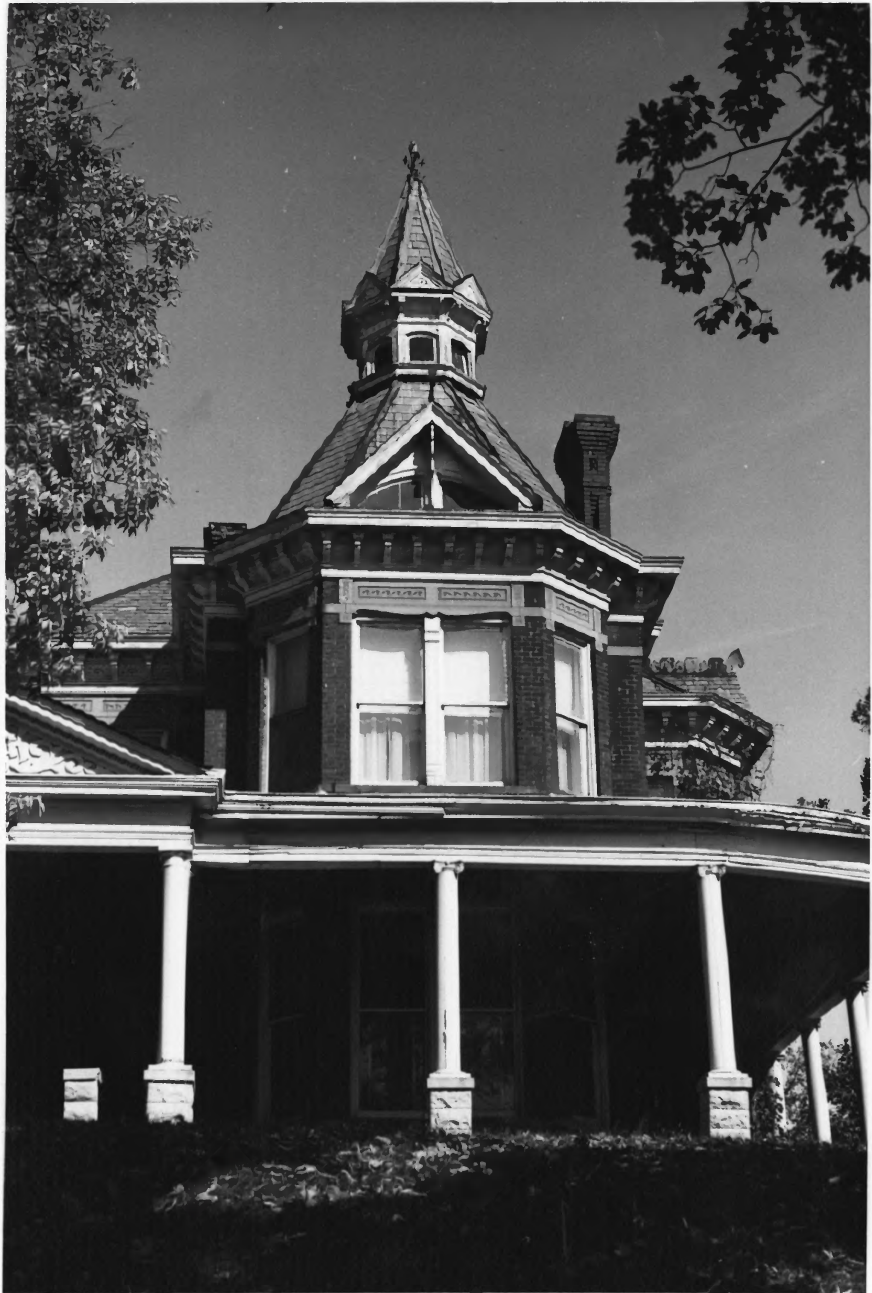
**4. IDENTIFICATION**

DESCRIBE VIEW, DIRECTION, ETC.

View of the A. J. Harwi house from the east, showing the vine-covered east side.  
The porch at the right is original.

#284

**PROPERTY OF THE NATIONAL REGISTER**



UNITED STATES DEPARTMENT OF THE INTERIOR  
NATIONAL PARK SERVICE

**NATIONAL REGISTER OF HISTORIC PLACES  
PROPERTY PHOTOGRAPH FORM**

*(Type all entries - attach to or enclose with photograph)*

**1. NAME**

COMMON

AND/OR HISTORIC

NUMERIC CODE *(Assigned by NPS)*

Harwi, A. J., House

MAY 6 1975

**2. LOCATION**

STATE

Kansas

COUNTY

Atchison

TOWN

Atchison

STREET AND NUMBER

1103 Atchison Street

**3. PHOTO REFERENCE**

PHOTO CREDIT

Staff, Kansas State  
Historical Society

DATE

October 2, 1974

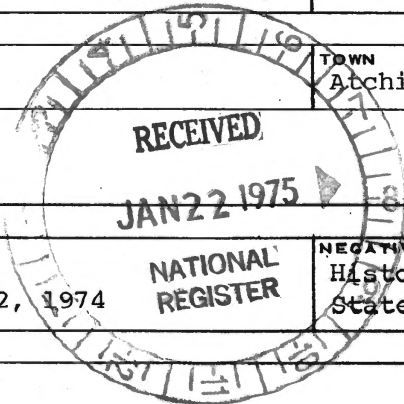
NEGATIVE FILED AT

Historic Sites Survey, Kansas  
State Historical Society

**4. IDENTIFICATION**

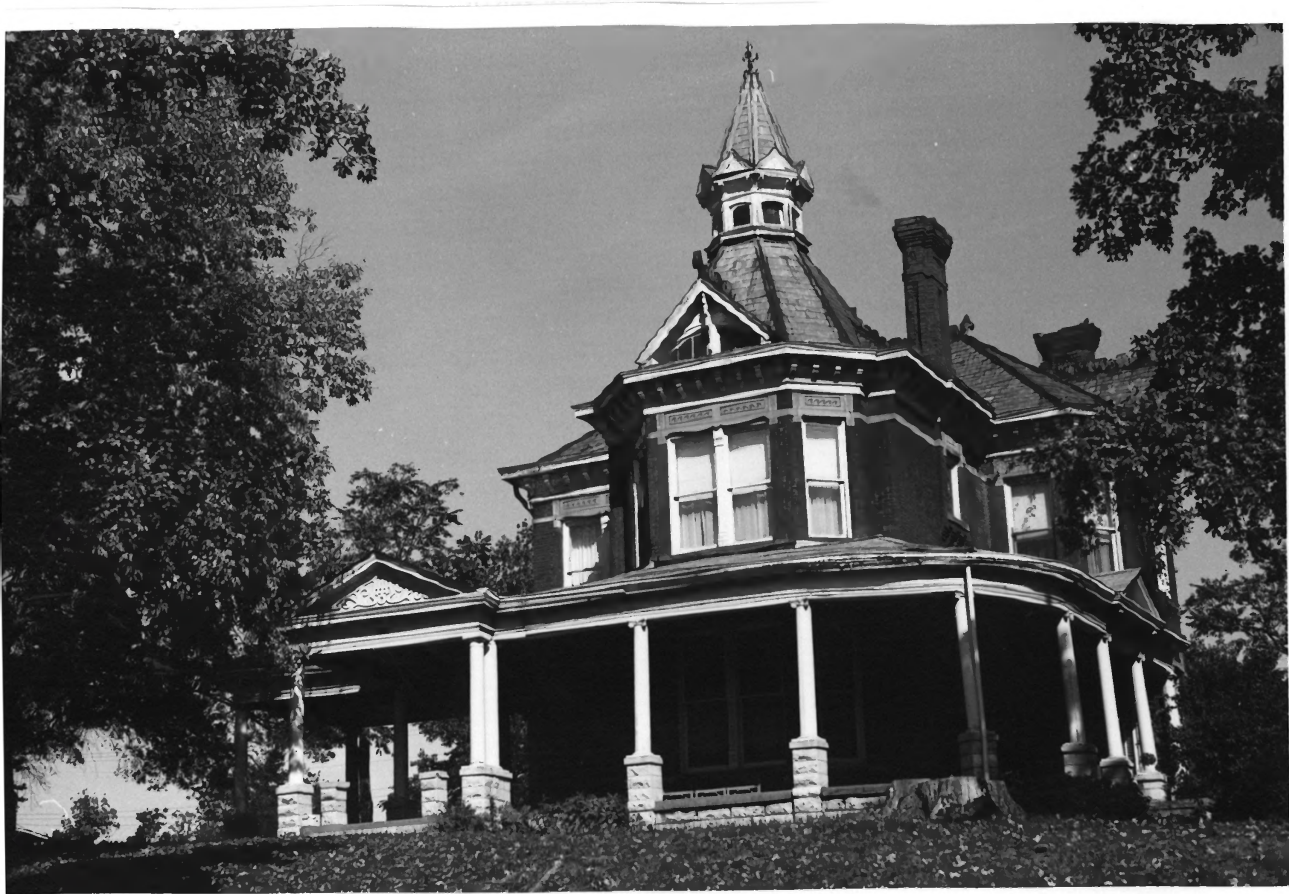
DESCRIBE VIEW, DIRECTION, ETC.

View of the A. J. Harwi house from the south, showing one of the most impressive features, the octagonal cupola at the south end.



# 3004

**PROPERTY OF THE NATIONAL REGISTER**

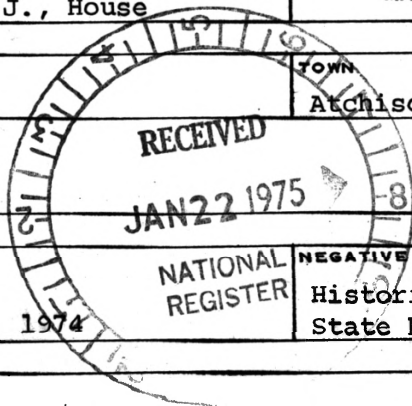


UNITED STATES DEPARTMENT OF THE INTERIOR  
NATIONAL PARK SERVICE

**NATIONAL REGISTER OF HISTORIC PLACES  
PROPERTY PHOTOGRAPH FORM**

*(Type all entries - attach to or enclose with photograph)*

<b>1. NAME</b>		
COMMON	AND/OR HISTORIC	NUMERIC CODE <i>(Assigned by NPS)</i>
	Harwi, A. J., House	MAY 6 1975
<b>2. LOCATION</b>		
STATE	COUNTY	TOWN
Kansas	Atchison	Atchison
STREET AND NUMBER		
1103 Atchison Street		
<b>3. PHOTO REFERENCE</b>		
PHOTO CREDIT	DATE	NEGATIVE FILED AT
Staff, Kansas State Historical Society	October 2, 1974	Historic Sites Survey, Kansas State Historical Society
<b>4. IDENTIFICATION</b>		
DESCRIBE VIEW, DIRECTION, ETC.		



View of the A. J. Harwi house from the south-southeast, showing the south front and part of the east side. The large wrap-around porch, with the carriage porch and two classical pediments, is a later addition.

#4 of 4

**PROPERTY OF THE NATIONAL REGISTER**