



PLATE I. Photograph of upright vertical slab basal course masonry architecture at Besh-Ba-Gowah. Characteristic of Salado architectural construction.

WARNING

Permission for reproduction usage must be obtained in writing from the Arizona State Museum. If permission is granted, the user is licensed for onetime, non-exclusive usage. This photograph may not be duplicated, reused, loaned, or resold, and the Arizona State Museum retains all rights for future usage.

ASM Negative No. \_\_\_\_\_

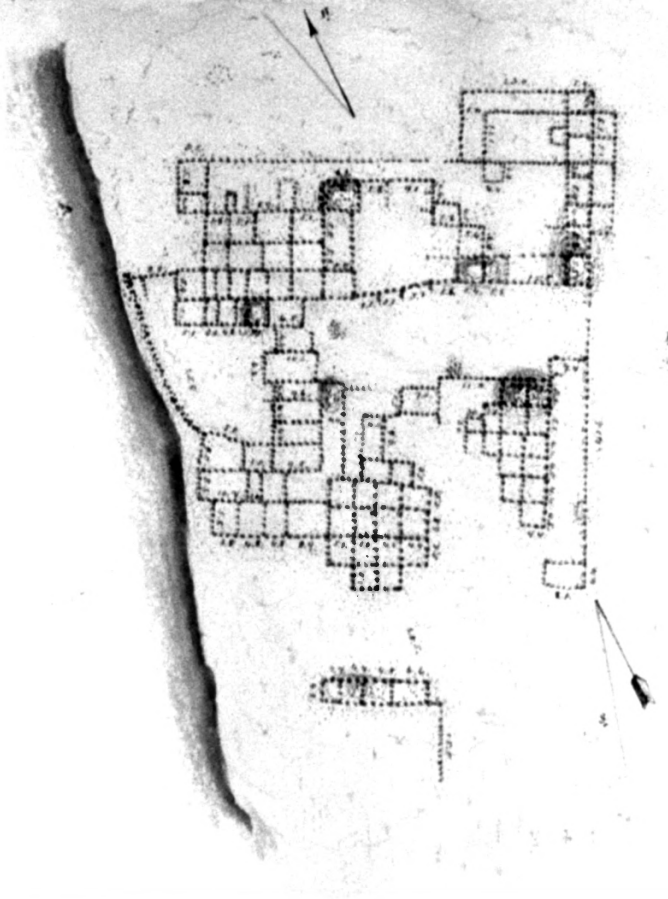
56895a

Credit line must read:

ARIZONA STATE MUSEUM  
UNIVERSITY OF ARIZONA

PHOTOGRAPH BY \_\_\_\_\_

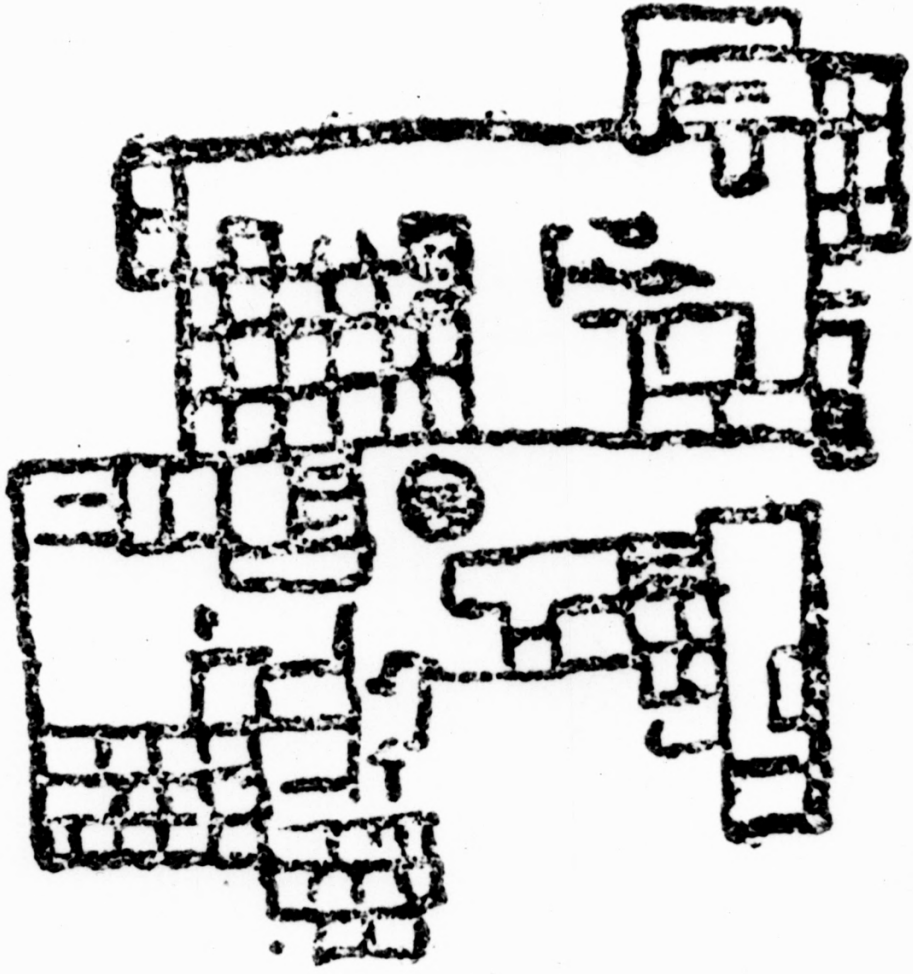
Arizona State Museum  
University of Arizona  
Tucson, Arizona 85721 (Ph. 602-626-2449)



Scale 1/4" = 1'-0"  
Architectural Drawing

PLATE II. Photo-reproduction of A. Bandelier's original 1883 detailed water-color map of Besh-Ba-Gowah (see Burrus 1969 for listing).

10



11

12

13

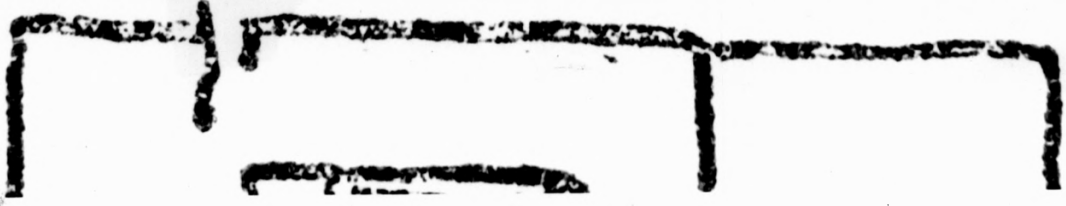


PLATE III. A rough pen-and-ink sketch of Besh-Ba-Gowah Ruin taken from Bandelier's original water-color map (PLATE II) (from Bandelier 1892:Plate I).



PLATE V. A 1937 photograph of an  
excavated and partially reconstructed  
Besh-Ba-Gowah Ruin. View looking north.

**WARNING**

Permission for reproduction usage must be obtained in writing from the Arizona State Museum. If permission is granted, the user is responsible for accurate, complete usage. This photograph may not be duplicated, resold, loaned, or copied, and the Arizona State Museum retains all rights for future usage.

Arch. Negative No. \_\_\_\_\_

*56897 b*

Credit line must read:

ARIZONA STATE MUSEUM  
UNIVERSITY OF ARIZONA

\_\_\_\_\_, PHOTOGRAPHER

Arizona State Museum  
University of Arizona  
Tucson, Arizona 85721 (Ph. 606-821-2445)





PLATE VI. Besh-Ba-Gowah today. Looking approximately east across the Center Patio with John Hohmann standing in the corridor. Photo taken on Oct 23, 1983.



PLATE VII. A 1938 photograph of the reconstructed Besh-Ba-Gowah Ruin. The view is to the south.

WARNING

Permission for reproduction usage must be obtained in writing from the Arizona State Museum. If permission is granted, the user is licensed for onetime, non-exclusive usage. This photograph may not be duplicated, reused, loaned, or resold. The Arizona State Museum retains all rights for future usage.

ASM Negative No. \_\_\_\_\_

56897a

Credit line must read:

ARIZONA STATE MUSEUM  
UNIVERSITY OF ARIZONA

PHOTOGRAPH BY \_\_\_\_\_

Arizona State Museum  
University of Arizona  
Tucson, Arizona 85721 (Ph. 602-626-2445)



PLATE VIII. The same view of Besh-Ba-  
Gowah today, looking down the corridor.  
View looking towards the south-southwest

Photograph taken on Oct 23, 1983.



PLATE IX. View of Besh-Ba-Gowah's southern end. Note the parking lot

abutting the site's southern end.

Photograph taken on Oct 23, 1983.