



1. Valhalla
2. Poolesville, Montgomery County, Md
3. Erwin Wensink
4. April, 1980
5. Historic Medley District
Box 232, Poolesville, Md. 20837
6. North elevation of house
Camera facing southeast
7. 1 of 17

FEB 8

1982



1. Valhalla
2. Poolesville, Montgomery County, Md
3. Erwin Wensink
4. April, 1980
5. Historic Medley District, Inc.
Box 232, Poolesville, Md. 20837
6. North and east elevation of house
Camera facing southwest
7. 2 of 17

FEB 8 1982



- 1/ Valhalla
2. Poolesville, Montgomery County, Md.
3. ~~Erwin Wensink~~ West elevation of house & kitchen
4. May, 1980
5. Historic Medley District, Inc.
Box 232, Poolesville, Md. 20837
6. East elevation of house & kitchen
building. camera facing **w**est.
7. 3 of 127

FEB 8 1982



1. Valhalla
2. Poolesville, Montgomery County, Md
3. Erwin Wensink
4. April, 1980
5. Historic Medley District, Inc.
Box 232, Poolesville, Md. 20837
6. South elevation of house, kitchen
building & dairy building.
7. 4 of 1217

FEB 8 1982



1. Valhalla
2. Poolesville, Montgomery County, Md
3. Erwin Wensink
4. April, 1980
5. Historic Medley District, Inc.
Box 232, Poolesville, Md. 20837
6. Southwest elevation with wooden
additions. Camera facing north
7. 5 of 17

FEB 8 1982



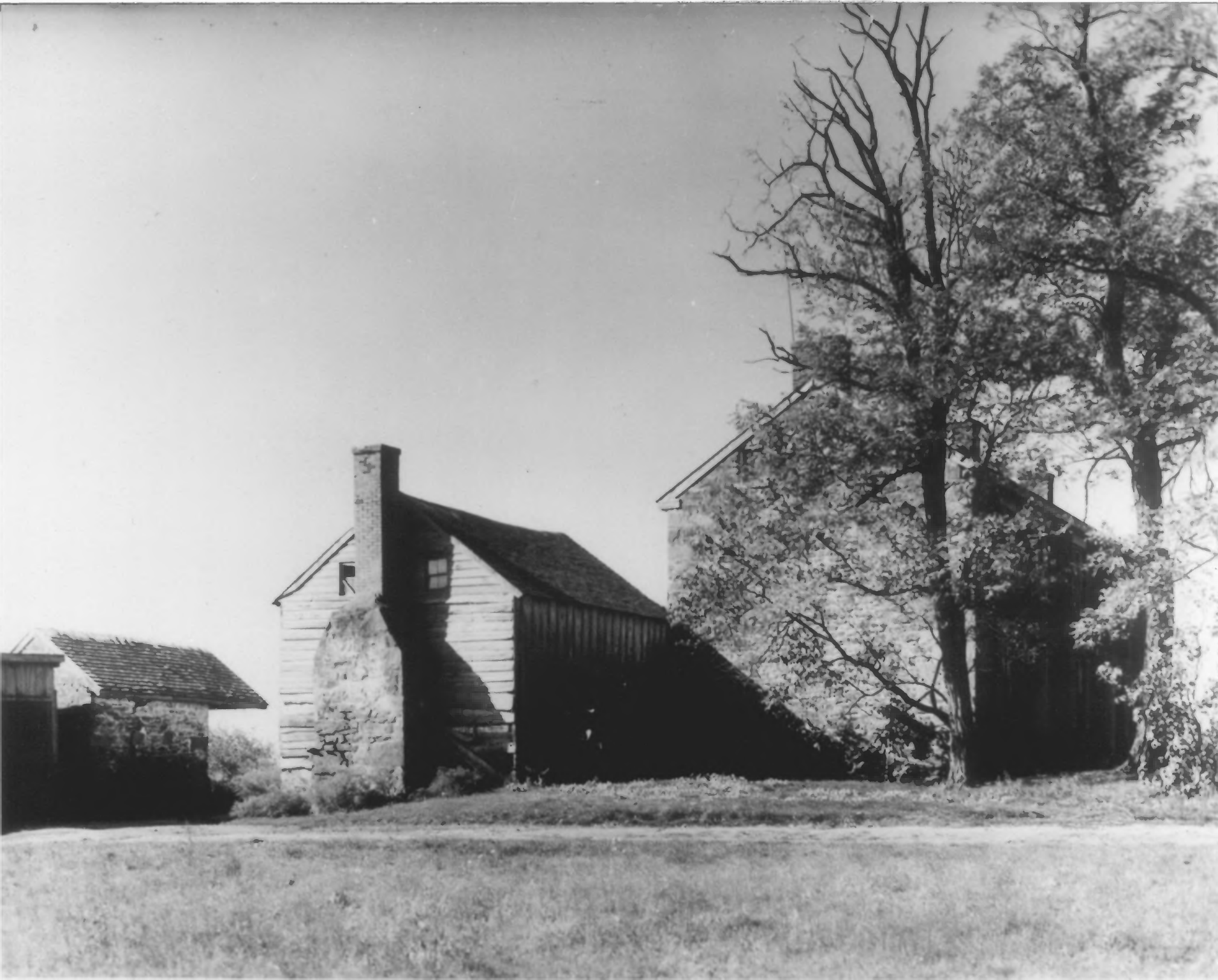
1. Valhalla
2. ^{at Vaz} Poolesville, Mont. County, Md.
3. Erwin Wensink
4. April, 1980
5. Historic Medley District, Inc.
Box 232, Poolesville, Md. 20837
6. Slatel^r roof showing original design
on north incline. 1 of 3 diamond
patterns shown.
7. 6 of 17

FEB 8 1982



1. Valhalla
2. Poolesville, Montgomery County, Md
3. Historic American Buildings Surve
4. North elevation of house, 1936
5. Library of Congress, Wash., D.C.
6. North elevation of house
7. Camera facing south
7. 7 of 17

FEB 8 1982



1. Valhalla
2. Poolesville, Montgomery Cty., Md.
3. Historic American Buildings Survey
4. 1936
5. Library of Congress, Wash., D.C.
6. East elevation of house, kitchen building before it was attached to
7. 8 of 17

house, and stone dairy building.
camera facing southwest. FEB 8 1982



1. Valhalla
2. Poolesville, Montgomery Cty., Md.
3. George Kephart, Jr.
4. January, 1980
5. Historic Medley District, Inc.
6. South elevation of stone dairy building.
7. 9 of 17

FEB 8 1982



1. Valhalla
2. Poolesville, Montgomery Cty., Md.
3. South elevation of cinder block
- 4.
5. Historic Medlay District, Inc.
Box 232, Poolesville, Md. 20837
6. South elevation of cinder block
building and wooden barn.
Camera facing north
7. 10 of 17

FEB 8 1982



1. Valhalla
2. Poolesville, Montgomery Cty., Md.
3. Erwin Wensink
4. April, 1980
5. Historic Medley District, Ind.
Box 232, Poolesville, Md. 20837
6. South & west elevations of wooden
bank barn with stone foundation
7. 11 of 17

FEB 8 1982



1. Valhalla
2. Poolesville, Montgomery Cty., Md.
3. George Kephart, Jr.
4. January, 1980
5. Historic Medley District, Inc.
6. Interior. East wall of dining room
One of two original fireplaces.
7. 12 of 17

FEB 8 1982



1. Valhalla
2. Poolesville, Montgomery Cty., Md.
3. George Kephart, Jr.
4. January, 1980
5. Historic Medley District, Inc.
Box 232, Poolesville, Md. 20837
6. Panelling and woodwork detail.
(Interior) Library
7. 13 of 17

FEB 8 1982



Something went wrong while we were encoding this page.
Please check the log file to find out the details.

1. Valhalla
2. Poolesville, Montgomery Cty., Md.
3. George Kephart, Jr.
4. January, 1980
5. Historic Medley District, Inc.
Box 232, Poolesville, Md. 20837
6. Interior. Window sill, detail of
woodwork.
7. 14 of 17

FEB 8 1982



1. Valhalla
2. Poolesville, Montgomery Cty., Md.
3. George Kephart, Jr.
4. January, 1980
5. Historic Medley District, Inc.
Box 232, Poolesville, Md. 20837
6. Interior. Looking north from
dining room. Original woodwork &
lock & transom lights
- 7/ 15 of 17

FEB 8 1982



1. Valhalla
2. Poolesville, Montgomery County, Md
Maryland
3. George Kephart, Jr.
4. January, 1980
5. Historic Medley District, Inc.
Box 232, Poolesville, Md. 20837
6. ~~Interior~~. East wall of kitchen
building. Cooking fireplace, original
crane.
7. 16 of 17 FEB 8 1982



1. Valhalla
2. Poolesville, Montgomery Cty., Md.
3. George Kephart, Jr.
4. January, 1980
5. Historic Medley District, Inc.
Box 232, Poolesville, Md. 20837
6. Interior, south wall of kitchen
building. Log walls, hand hewn
beams.
7. 17 of 17

FEB 8 1982