



Photo #1

DEC 19 1978

FEB 1

1979

Anheuser Busch Beer Depot, office and

stable. Omaha, Nebraska. D. Murphy,

1937 F Street, Lincoln, Nebraska

(DM 7805/1:4). View to the southeast

May, 1978

D. Murphy

PHOTO: D. MURPHY, LINCOLN, NEBR (MAY 1978)
ANHEUSER BUSCH DEPOT, OMAHA - GENERAL VIEW LOOKING SOUTHEAST

DM 7805-1:4



7805/2:9 KB2-20 RB04 SPEC 1

DM 7805-1:9 PHOTO: D. MURPHY, LINCOLN, NEBR. (MAY 1978)
ANHEUSER BUSCH DEPOT, OMAHA - COURTYARD LOOKING SOUTH

FEB 1 1979 DEC 19 1978
Photo #2
Anheuser Busch Beer Depot, courtyard with
Ice house at rear. Omaha, Nebr. D. Murphy,
1937 F Street, Lincoln, Nebraska *Douglas*
(DM 7805/1:9) View to the south. May, 1978.



Photo #3 FEB 1 1979 DEC 19 1978
Anheuser Busch Beer Depot, courtyard.
Omaha, Nebraska. D. Murphy, 1937 F Street,
Lincoln, Nebraska. (DM 7805/1:18). View
to the northeast. May, 1978. *Douglas C*

PHOTO: D. MURPHY, LINCOLN, NEBR. (MAY 1978)
ANHEUSER BUSCH DEPOT, OMAHA - COURTYARD LOOKING NORTHEAST

DM 7805-1-18

7805/2:18

14B2-25

RR004

SPEC 1



7805/2:25

LR2-30

RFB

Spec 1

Photo #4 **DEC 19 1978**
 Anheuser Busch Beer Depot, office. Omaha,
 Nebraska. D. Murphy, 1937 F Street,
 Lincoln, Nebraska (DM 7805/1:25). View
 to the south. May, 1978. **FEB 1 1979**
Douglas

PHOTO: D. MURPHY, LINCOLN, NEBR. (MAY 1978)
 ANHEUSER BUSCH DEPOT, OMAHA - OFFICE BLDG, NORTH FACADE

DM 7805-1:25



R804

16B2-34@16

19 10:25 PC

WPI

(DM7805-)

PHOTO BY D. MURPHY, LINCOLN, NE. ANHEUSER BUSCH BEER DEPOT, OMAHA (DOCS 1-12) MAY, 1978

Photo #5 DEC 19 1978 FEB 1 1979
 Anheuser Busch Beer Depot, Office and
 stable. Omaha, Nebraska. D. Murphy,
 1937 F Street, Lincoln, Nebraska (DM 7805)
 View to the southeast. May, 1978 *D. Murphy*



AND PAPER COMPANY

PHONE 344-7211 Buyers of High Grade Paper

1209 JONES ST.

7805/1:26

1282-30 R&D4

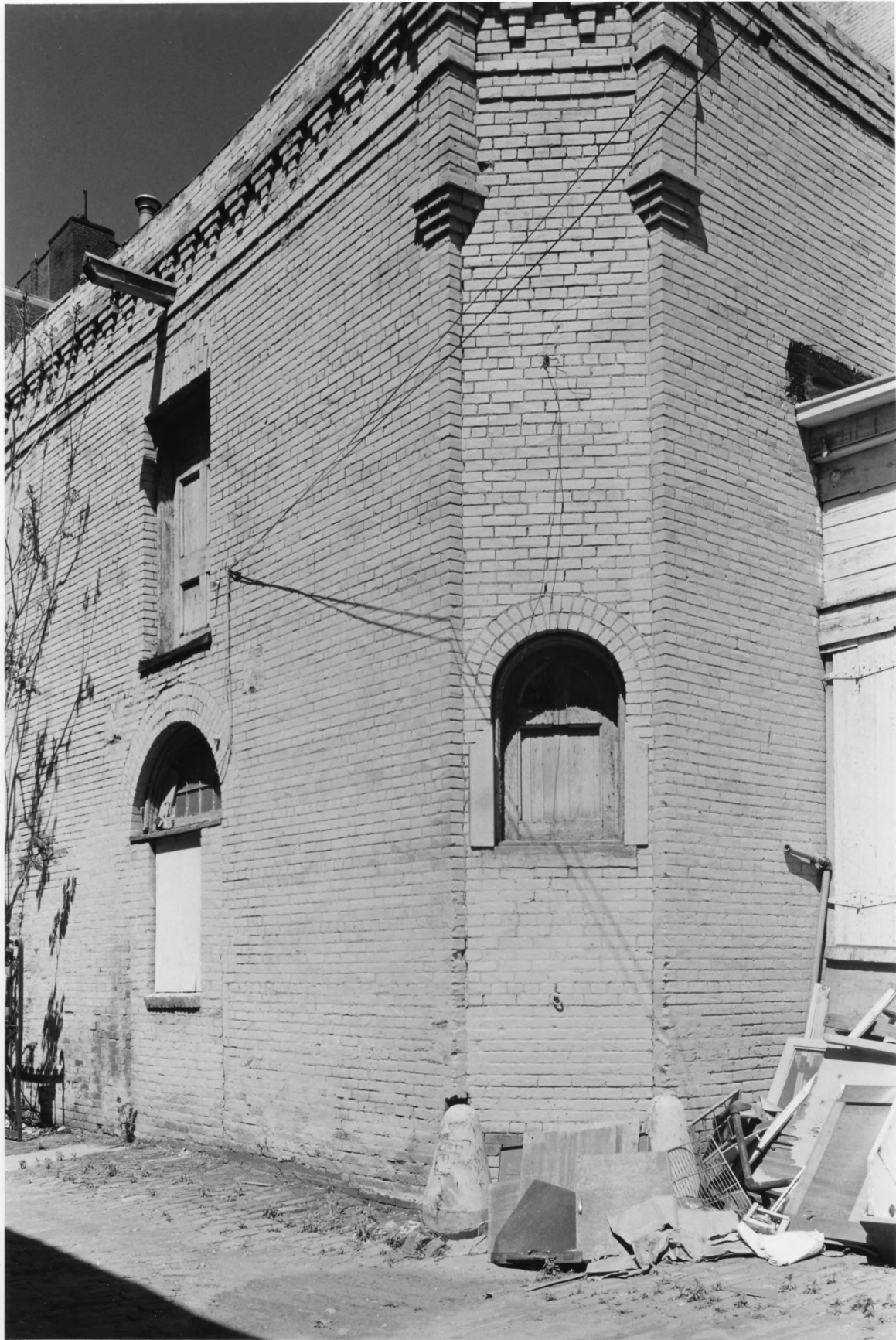
Spec 1

Photo #6

DEC 19 1978 FEB 1 1979
Anheuser Busch Beer Depot, stable,
Omaha, Nebraska. D. Murphy, 1937 F Street,
Lincoln, Nebraska (DM 7805/1:26). View
to the south. May, 1978 *Daugherty*

PHOTO: D. MURPHY, LINCOLN, NEBR (MAY 1978)

DM 7805-1:26 ANHEUSER-BUSCH DEPOT, OMAHA - STABLE LOOKING SOUTH



L#

7805/2:13 1482-30 ROAD SPEC 1

PHOTO: D. MURPHY, LINCOLN, NEBR (MAY 1978).
ANHEUSER BUSCH DEPOT, OMAHA - STABLE, SOUTHWEST FACADES

DM 7805-2:13

Photo #7 FEB 1 1979 DEC 19 1978
Anheuser Busch Beer Depot, stable.
Omaha, Nebraska. D. Murphy, 1937 F Street,
Lincoln, Nebraska (DM 7805/1:13). View
to the northeast. May, 1978. *Knapp*



7805/2:19

LCR2-25 RR04 SP2C1

Photo #8

DEC 19 1978 FEB 1 1979

Anheuser Busch Beer Depot, ice house/
beer vault, Omaha, Nebraska. D. Murphy,
1937 F Street, Lincoln, Nebraska (DM
7805/1:19). View to the northeast. May, 1978.

D. Murphy

PHOTO: D. MURPHY, LINCOLN, NEBR (MAY 1978)
ANHEUSER BUSCH DEPOT, OMAHA - ICE HOUSE, SOUTHWEST FACADES

DM 7805-1:19



7805/2:21

1CB2-25

RB09

SP01

Photo #9
 Anheuser Busch Beer Depot, Ice House/Beer Vault. Omaha, Nebr. D. Murphy, 1937 F Street, Lincoln, (DM 7805/1:21). View to the east. May 1978
Langford DEC 19 1978 FEB 1 1979

PHOTO: D. MURPHY, LINCOLN, NEBR. (MAY 1978)
 ANHEUSER BUSCH DEPOT, OMAHA - STABLE, WEST FACADE

DM 7805-1:21



FEB 1 1979

Photo #10 **DEC 19 1978** *Southern*
Anheuser Busch Beer Depot, detail of Ice
House. Omaha, Nebraska. D. Murphy, 1937
F Street, Lincoln, Nebraska (DM 7805/1:15).
View to the southeast. May, 1978.

PHOTO: D. MURPHY, LINCOLN, NEBE. (MAY 1978)
DM 7805-1:15 ANHEUSER BUSCH DEPOT, OMAHA - DET. ICEHOUSE LOOKING SOUTH

7805/2:15 1281-30 R304 SPEC 1