

AD 1930



Humboldt Bay Life-Saving Station
Humboldt County, California

U. S. Coast Guard Station Humboldt Bay, ^{DOE}
California

OCT 30 1979

Photo by Judith HOKMAN 29 January 1977

Negative: Twelfth Coast Guard District
San Francisco, California

View of Station Cornerstone and Survey Bench
Mark Photo #1 of 2

NOV 25 1977

OFFICIAL USCG

PHOTOGRAPH

12th COAST GUARD DISTRICT

#12



*Humboldt Bay Life-Saving Station
Humboldt County, California*

U. S. Coast Guard Station Humboldt Bay,
California

Photo by Judith HOKMAN 29 January 1977

Negative: Twelfth Coast Guard District,
San Francisco, California

Rear and Side View, looking North East

Photo #2 ²⁰¹² OCT 30 1979 ^{DOE} NOV 25 1977

OFFICIAL USCG

PHOTOGRAPH

12th COAST GUARD DISTRICT

#12



Humboldt Bay Life-Saving Station
Humboldt County, California

30/12

U. S. Coast Guard Station Humboldt Bay,
California

Photo by Judith HOKMAN 29 January 1977

Negative: Twelfth Coast Guard District,
San Francisco, California

Front and side view, looking Southwest

Photo #GCT 30 1979

NOV 25 1977

OFFICIAL USCG

PHOTOGRAPH

12th COAST GUARD DISTRICT

#12



Humboldt Bay Life-Saving Station
Humboldt County, California

Marine Railway

NOV 25 1977

U. S. Coast Guard Station Humboldt Bay,
California

Photo by Judith HOKMAN 29 January 1977

Negative: Twelfth Coast Guard District,
San Francisco, California

View from dock, looking West ^{DOC} OCT 30 1979

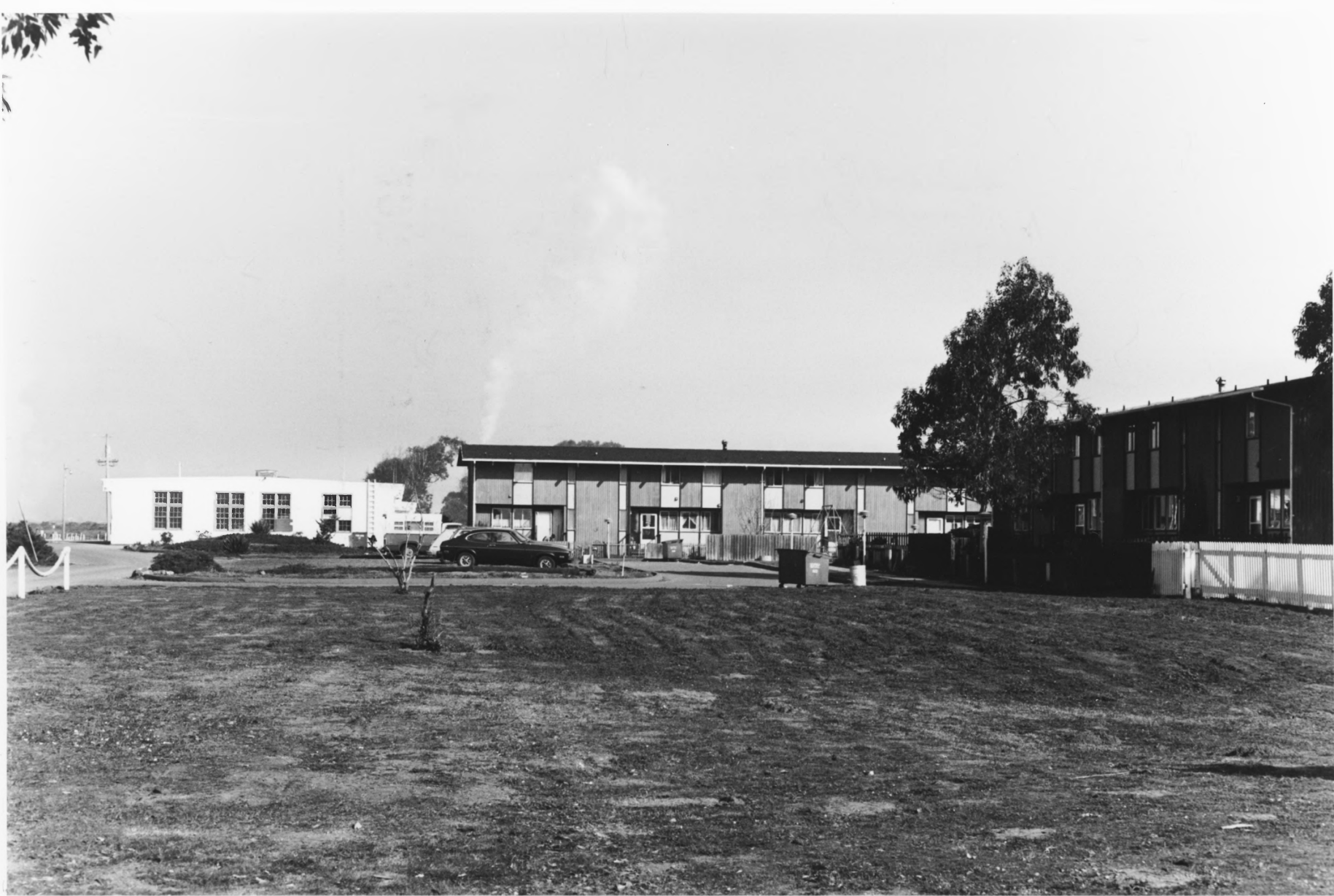
Photo #40/12

OFFICIAL USCG

PHOTOGRAPH

12th COAST GUARD DISTRICT

#12



Humboldt Bay Life-Saving Station
Humboldt County, California

Family Housing

NOV 25 1977

U. S. Coast Guard Station Humboldt Bay,
California

OCT 30 1979

Photo by Judith HOKMAN 29 January 1977

Negative: Twelfth Coast Guard District,
San Francisco, California

View from Parking Lot, looking North

Photo #5412

OFFICIAL USCG

PHOTOGRAPH

12th COAST GUARD DISTRICT

#12



Humboldt Bay Life-Saving Station
Humboldt County, California

Warehouse A to left

Warehouse B to right

U. S. Coast Guard Station Humboldt Bay,
California

Photo by Judith HOKMAN 29 January 1977

Rear View, Looking Southwest

Photo #6 OCT 30 1979

60/12

DOE

NOV 25 1977

OFFICIAL USCG

PHOTOGRAPH

12th COAST GUARD DISTRICT

#12



Humboldt Bay Life-Saving Station
Humboldt County, California

NOV 25 1977

U. S. Coast Guard Station Humboldt Bay,
California

Photo by Judith HOKMAN ^{POE} 29 January 1977

Negative: Twelfth Coast Guard District
San Francisco, California

View of Cypress Grove marking the site of
fog-signal station keeper's housing

Photo #7912

OFFICIAL USCG

PHOTOGRAPH

12th COAST GUARD DISTRICT

#12



Humboldt Bay Life-Saving Station
Humboldt County, California
ADG

"T" Dock OCT 30 1979

U. S. Coast Guard Station Humboldt Bay,
California

Photo by Judith HOKMAN, 29 January 1977

Negative: Twelfth Coast Guard District
San Francisco, California

Looking South

Photo #8.8/2

NOV 25 1977

OFFICIAL USCG

PHOTOGRAPH

12th COAST GUARD DISTRICT

#12



Humboldt County, California
Humboldt Bay Life-Saving Station

U. S. Coast Guard Station Humboldt Bay,
California

Photo by Judith HOKMAN

OCT 30 1979

29 January 1977

Negative: Twelfth Coast Guard District
San Francisco, CA

View of the Station and Outbuildings looking
North -- Photo #94/2

NOV 25 1977

OFFICIAL USCG
PHOTOGRAPH
12th COAST GUARD DISTRICT
#12



Humboldt Bay Life-Saving Station
Humboldt County, California

Site of old Life-Saving Station ^{D.O.E.} OCT 30 1979
U. S. Coast Guard Station Humboldt Bay
California

Photo by Judith HOKMAN 29 January 1977

Looking North.

Photo # ~~109~~ 109/12 NOV 25 1977

OFFICIAL USCG
PHOTOGRAPH
12th COAST GUARD DISTRICT
#12



Humboldt Bay Life-Saving Station
Humboldt County, California

DOE
OCT 30 1979

U. S. Coast Guard Station, Humboldt Bay,
California

NOV 25 1977

Photo by Judith HOKMAN 29 January 1977

View of Humboldt Bay Entrance Rear Range
Marker/Rotating Beacon situated on the
North Spit replaced the Table Bluff Light-
house, June 04, 1971 -- View looking South-
west -- Photo #114/12

OFFICIAL USCG

PHOTOGRAPH

12th COAST GUARD DISTRICT

#12



Humboldt Bay Life-Saving Station
Humboldt County, California

Remains of railroad used in jetty construction in 1890's

U. S. Coast Guard Station Humboldt Bay,
California

Photo by Judith HOKMAN 29 January 1977

Photo #12 *9/12*

DC
OCT 30 1979

NOV 25 1977

OFFICIAL USCG
PHOTOGRAPH
12th COAST GUARD DISTRICT
#12 _____