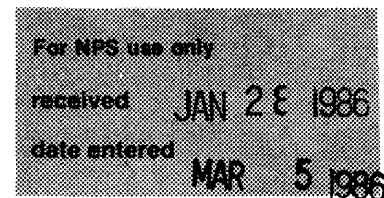


**United States Department of the Interior
National Park Service**

**National Register of Historic Places
Inventory—Nomination Form**



Continuation sheet	Thibodaux Multiple Resource Area	Item number	7 & 8	Page
	Lafourche Parish, LA			

RIVIERE BUILDING	Building #6	Owners:	Alma C. Bourgeois
405 W. Third	UTM: 15/710680/3298100		502 Minard Street Thibodaux, LA 70301
Builder: Thomas A. Riviere			Odette C. Naquin 505 McCulla St. Thibodaux, LA 70301
1900			Philip J. Cancienne 1713 Himolaya St. Thibodaux, LA 70301
Local Significance - Architecture			Elsie C. Behrhorst 303 Myrtle Place Lafayette, LA 70501

The Riviere Building is a two story, brick, Italianate commercial structure with an elaborate pressed metal front. The second story's numerous details include engaged composite columns on pedestals, copious brincade panels, square floral panels, a full entablature, and a central tablet surmounted by a pediment. An old photo reveals that the original shopfront was fairly conventional. As originally built, the store had a large open ground story with a square opening in the ceiling which provided a view of the second story. The opening was defined by balustrades.

Since construction, the second floor opening has been covered over and a new floor has been inserted dividing the first story. Thus the old second story is now the third. The first story has been completely modernized, the shopfront has been fitted with carrara glass, and a new fixed awning has been installed. There is also a more modern very thin single story side wing to the left which reads as a separate entity. These changes have not affected the aforementioned pressed metal ornamentation, which is the source of the building's significance. Hence, the Riviere Store retains its National Register eligibility.

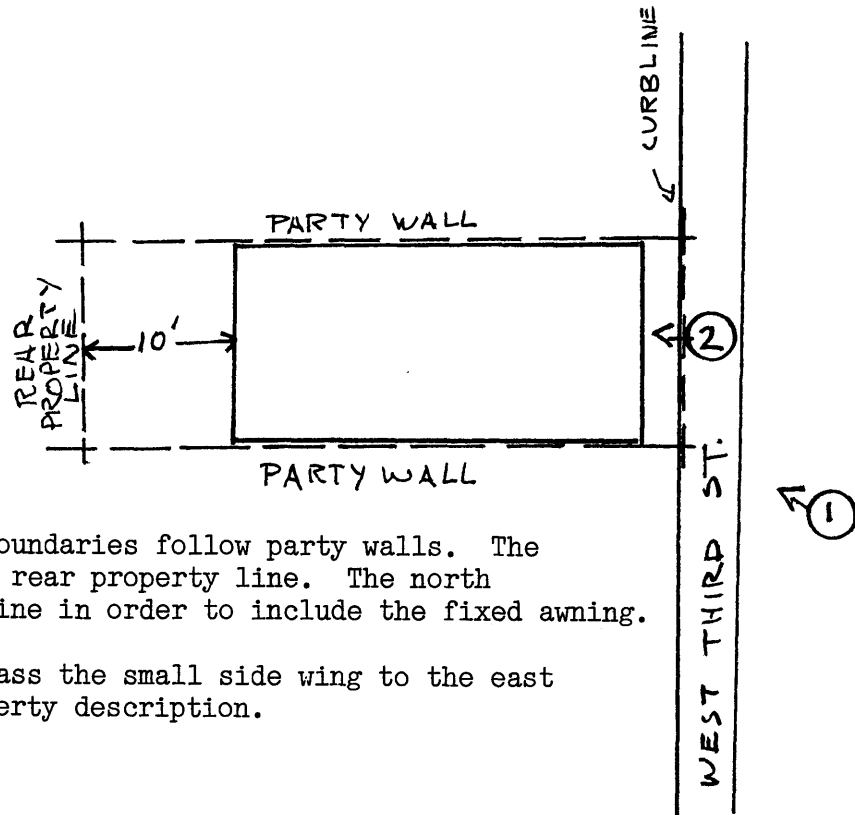
Significance:

There are undoubtedly over one hundred commercial buildings in Lafourche Parish which are fifty years old or older. Most of these are either simple late nineteenth-early twentieth century plantation stores or examples of the "commercial vernacular," the latter being a diluted, sometimes much diluted, version of the urban Italianate style.

Of course, the grandest commercial buildings in the parish feature the most elaborate Italianate styling. The Riviere Building is one of only three false front Italianate commercial buildings in Lafourche Parish which retain their architectural integrity. Others have been modified beyond recognition. Of these three, the Riviere Building is the only one with an ornamental pressed metal front.

RIVIERE BLDG
THIBODAUX
LAFOURCHE PARISH,
LA.

THIBODAUX MRA



The east and west boundaries follow party walls. The south boundary follows the rear property line. The north boundary follows the curbline in order to include the fixed awning.

NB: The boundaries encompass the small side wing to the east referred to in property description.

@ 1/6th of an acre

BOUNDARY —



(NOT TO SCALE)