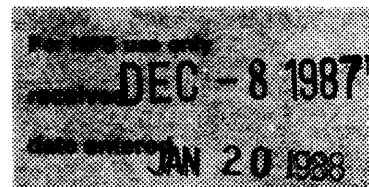


United States Department of the Interior
National Park Service

**National Register of Historic Places
Inventory—Nomination Form**



Continuation sheet Grenada Multiple
Resource Area

Item number 7

Page 5

Property: Grenada Masonic Temple

Classification: Building

Owner: Masonic Temple, 210 S. Main St. Grenada, MS 38901.

Location: 210 S. Main St., Grenada, Mississippi.

Contributing Buildings: 1

Non-Contributing Buildings: 0

Description:

The Grenada Masonic Temple is a two-story building of brick and concrete construction. Designed in the Neo-Classical style, the building features four two-story concrete Doric columns on the main facade. The building rests on a raised basement which has one-over-one sash windows and a small office area on the north facade. The main entrance has original double doors of frame and glass with a decorative multi-light transom. Over the entrance is a cornice with console brackets. Windows on the first story are tri-partite design with rectangular one-over-one sash and flanking single lights. Other windows on the north and south facades are one-over-one sash.

On the second story are similar tri-partite one-over-one sash windows with arched multi-light transoms. Above the transoms is brick arching with stone keystones. Near the roofline of the main facade is an entablature with guttae and metopes and below the concrete cornice is a row of dentils. At the roofline is a concrete and brick parapet. The interior of the building has not been significantly altered and retains its original staircase and woodwork. There are no other buildings associated with the property.

Period of Significance: 1925

Area of Significance: Architecture

Architect/Builder: Unknown

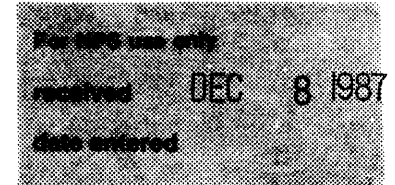
Statement of Significance:

The Grenada Masonic Temple is the best example of the Neo-Classical style in the city and one of the most prominent buildings in the downtown area. Built in 1925, the Masonic Temple is home of Grenada Lodge No. 31, F & A.M. This lodge was formed on October 29, 1836 and is one of the oldest lodges in northern Mississippi. Early founders of the town including John Wilson and James Sims helped to form the lodge.

Prior to 1925, the lodge met at several different locations in the downtown area before constructing this two-story building. It was constructed in the

**United States Department of the Interior
National Park Service**

**National Register of Historic Places
Inventory—Nomination Form**



Continuation sheet Grenada Multiple
Resource Area

Item number 7

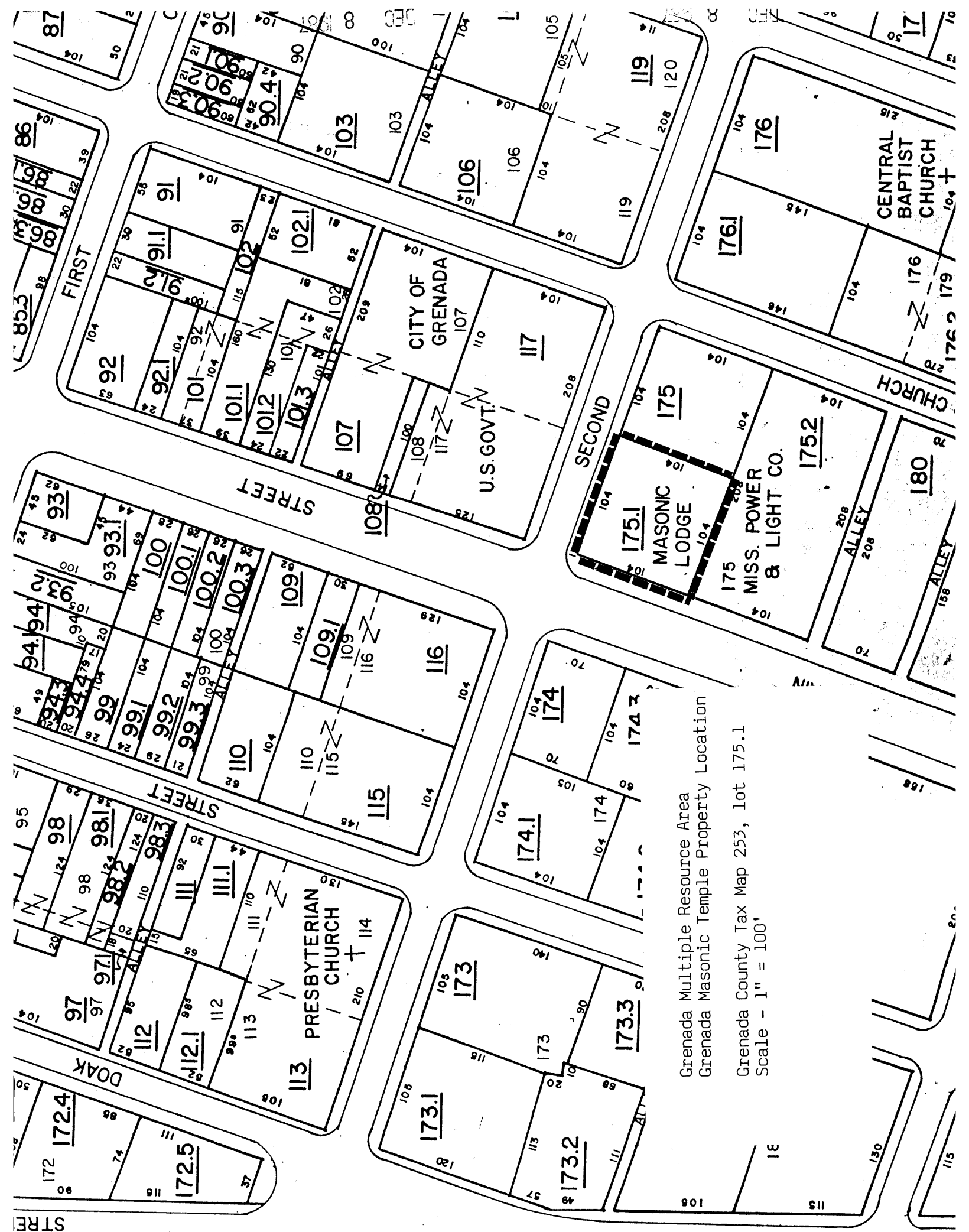
Page 6

Neo-Classical style with four Doric columns prominent on the main facade. The large building also displays arched windows on the second story and classical detailing at the entrance and on the cornice. The temple was built to contain offices for the lodge plus a large meeting hall on the second story. The architect of the building is unknown. The Masonic Temple remains the best example of the Neo-Classical style in Grenada and a landmark building in the downtown area. The building continues to be the home of the Grenada Lodge.

Acreage: Approx. .27 acre.

UTM References: Grenada Quad: 16/240488/3741405

Verbal Boundary Description and Justification: The boundary for the Masonic Temple is shown as lot 175.1 on accompanying Grenada County Tax Map 253 which is drawn at a scale of 1" = 100'. The boundary includes all property historically associated with the Masonic Temple. The boundary includes one contributing building.



Grenada Multiple Resource Area
 Grenada Masonic Temple Property Location

Grenada County Tax Map 253, lot 175.1
 Scale - 1" = 100'