



ONE WAY
→

HOTEL

J. W. HARTMAN
BUILDING

Southern Terminal and Warehouse
Historic District
Knoxville, Knox County,
Tennessee

Photo by: Gail L. Guymon
Date: June 28, 1985
Neg: Knoxville/Knox County
Metropolitan Planning
Commission

Knoxville, Tennessee
Facing northeast, view of east
side of 100 block of North
Central Avenue
#1 of 20



Southern Terminal and Warehouse
Historic District
Knoxville, Knox County,
Tennessee

Photo by: Gail L. Guymon
Date: June 28, 1985
Neg: Knoxville/Knox County
Metropolitan Planning
Commission

Knoxville, Tennessee
Facing southeast, view of east
side of 100 block of South
Central Avenue
#2 of 20



Southern Terminal and Warehouse
Historic District
Knoxville, Knox County,
Tennessee
Tennessee

Photo by: Gail L. Guymon
Date: June 28, 1985
Neg: Knoxville/Knox County
Metropolitan Planning
Commission

Knoxville, Tennessee
Facing east, view of north side
of Southern Railway Terminal,
306 Depot Avenue
#3 of 20



Southern Terminal and Warehouse
Historic District
Knoxville, Knox County,
Tennessee

Photo by: Gail L. Guymon
Date: June 28, 1985
Neg: Knoxville/Knox County
Metropolitan Planning
Commission

Knoxville, Tennessee
Facing southeast, view of north
side of Southern Railway Yard
100 block of West Jackson Avenue
#4 of 20



John H. Daniel Co.

HOT FREE LOC

ILGO OF TV

H. 37

Southern Terminal and Warehouse
Historic District
Knoxville, Knox County,
Tennessee

Photo by: Gail L. Guymon
Date: June 28, 1985
Neg: Knoxville/Knox County
Metropolitan Planning
Commission

Knoxville, Tennessee
Facing northwest, view of north
side of 121-131 West Jackson
Avenue
#5 of 20



Southern Terminal and Warehouse
Historic District
Knoxville, Knox County,
Tennessee

Photo by: Gail L. Guymon
Date: June 28, 1985
Neg: Knoxville/Knox County
Metropolitan Planning
Commission

Knoxville, Tennessee
Facing northwest, view of east
side of 100 block of State
Street
#6 of 20



Southern Terminal and Warehouse
Historic District
Knoxville, Knox County,
Tennessee

Photo by: Gail L. Guymon
Date: June 28, 1985
Neg: Knoxville/Knox County
Metropolitan Planning
Commission

Knoxville, Tennessee
Facing southeast, view of
Southern Railway Terminal
and railyards 100 block of
West Jackson Avenue #7 of 20

AMERICAN
CLOTHING CO.
Manufacturers of
MENS CLOTHING

PAVING
CONCRETE
PARA PAVIA



Southern Terminal and Warehouse
Historic District
Knoxville, Knox County,
Tennessee

Photo by: Gail L. Guymon
Date: June 28, 1985
Neg: Knoxville/Knox County
Metropolitan Planning
Commission

Knoxville, Tennessee
Facing southeast, view of
south side of 100 block
West Jackson Avenue
#8 of 20



Southern Terminal and Warehouse
Historic District
Knoxville, Knox County,
Tennessee

Photo by: Gail L. Guymon
Date: June 28, 1985
Neg: Knoxville/Knox County
Metropolitan Planning
Commission

Knoxville, Tennessee
Facing south, view of north side
(facades) 108-114 East Jackson
Avenue
#9 of 20



Southern Terminal and Warehouse
Historic District
Knoxville, Knox County,
Tennessee

Photo by: Gail L. Guymon
Date: June 28, 1985
Neg: Knoxville/Knox County
Metropolitan Planning
Commission

Knoxville, Tennessee
Facing southeast, view of Gay
Street Viaduct
#10 of 20



Southern Terminal and Warehouse
Historic District
Knoxville, Knox County,
Tennessee

Photo by: Gail L. Guymon
Date: June 28, 1985
Neg: Knoxville/Knox County
Metropolitan Planning
Commission

Knoxville, Tennessee
Facing northeast, view of south
side of former Southern Railway
Freight Depot 401 West Jackson
Avenue #11 of 20



Southern Terminal and Warehouse
Historic District
Knoxville, Knox County,
Tennessee

Photo by: Gail L. Guymon
Date: June 28, 1985
Neg: Knoxville/Knox County
Metropolitan Planning
Commission

Knoxville, Tennessee
Facing east, view of Gay Street
Viaduct and south side of 300
block West Jackson Avenue
#12 of 20



PHILCO
COLOR TV

CONSUMERS WHOLESALE INC.

EXCLUSIVE WHOLESALE DISTRIBUTORS

SOUTHERN

SOUTHERN

Southern Terminal and Warehouse
Historic District
Knoxville, Knox County,
Tennessee

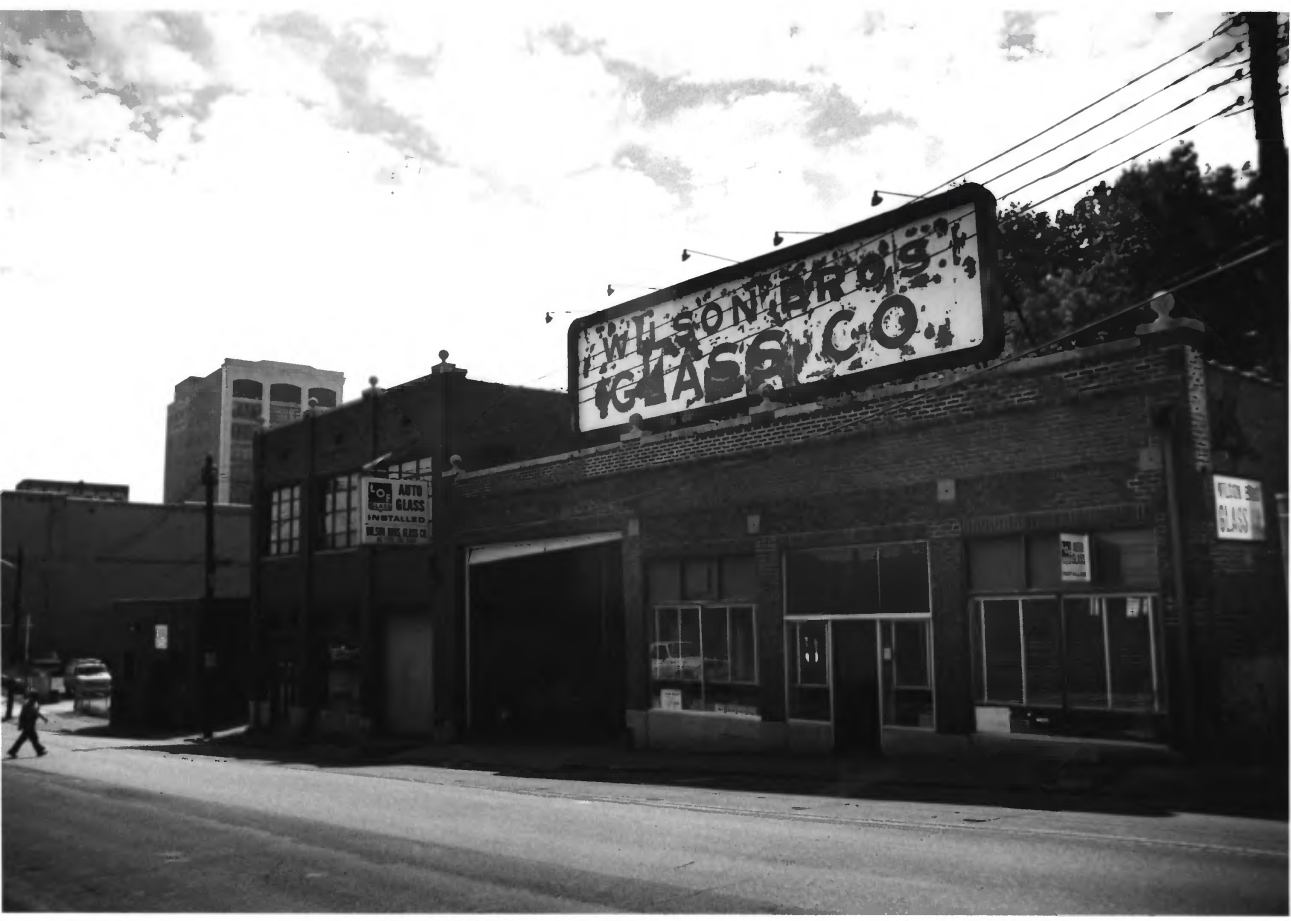
Photo by: Gail L. Guymon
Date: June 28, 1985
file: Knoxville/Knox County
Metropolitan Planning
Commission

Knoxville, Tennessee
Facing southwest, view of
Southern Railway yards and
north side of 500 block West
Jackson Avenue #13 of 20

WILSON BROS
GLASS CO

CO. AUTO
GLASS
INSTALLED

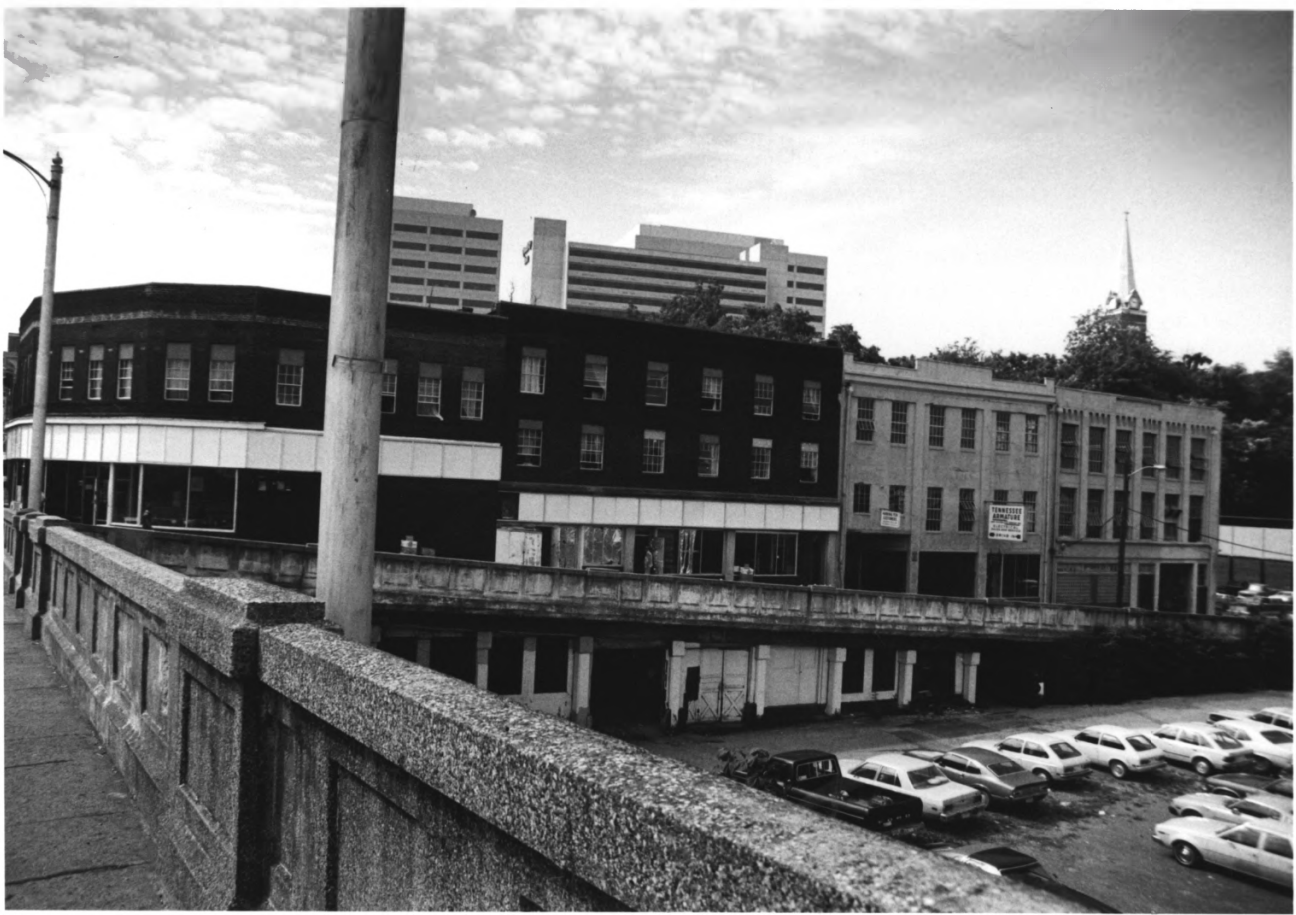
WILSON BROS
GLASS



Southern Terminal and Warehouse
Historic District
Knoxville, Knox County,
Tennessee

Photo by: Gail L. Guymon
Date: June 28, 1985
Neg: Knoxville/Knox County
Metropolitan Planning
Commission

Knoxville, Tennessee
Facing southeast, view of
408 and 416 West Jackson
Avenue
#14 of 20



Southern Terminal and Warehouse
Historic District
Knoxville, Knox County,
Tennessee

Photo by: Gail L. Guymon
Date: June 28, 1985
Neg: Knoxville/Knox County
Metropolitan Planning
Commission

Knoxville, Tennessee
Facing south, view of Gay
Street Viaduct and south side
of 300 block West Jackson
Avenue
#15 of 20



Southern Terminal and Warehouse
Historic District
Knoxville, Knox County,
Tennessee

Photo by: Gail L. Guymon
Date: June 28, 1985
Neg: Knoxville/Knox County
Metropolitan Planning
Commission

Knoxville, Tennessee
Facing north, view of south
side of Southern Railway
Terminal
#16 of 20



ETJED
SEE
SAM
WEAR

HAROLD'S
MEATS AND SEAFOOD
FOODS
BAKED

MILL AGENT STORE
DISCOUNT PRICES
SUPERIOR FABRICS

Quality
Inn

Southern Terminal and Warehouse
Historic District
Knoxville, Knox County,
Tennessee

Photo by: Gail L. Guymon
Date: June 28, 1985
Neg: Knoxville/Knox County
Metropolitan Planning
Commission

Knoxville, Tennessee
Facing southwest, view of
west side of 100 block South
Gay Street
#17 of 20



Southern Terminal and Warehouse
Historic District
Knoxville, Knox County,
Tennessee

Photo by: Gail L. Guymon
Date: June 28, 1985
Neg: Knoxville/Knox County
Metropolitan Planning
Commission

Knoxville, Tennessee
Facing northwest, view of north
side of 500 block West Jackson
Avenue

#18 of 20



PAWNBROKERS
NET

PEOPLE'S STUDIO

HAROLD'S
SUPER MARKET
FOODS

HAROLD'S

Southern Terminal and Warehouse
Historic District
Knoxville, Knox County,
Tennessee

Photo by: Gail L. Guymon
Date: June 28, 1985
Neg: Knoxville/Knox County
Metropolitan Planning
Commission

Knoxville, Tennessee
Facing west, view of 131-135
South Gay Street
#19 of 20



STERCHI'S

the SOUTH'S
LARGEST
HOME
FURNISHERS

Come to
**Marlboro
Country.**

CAMPBELL
INC.
PRINTING

Southern Terminal and Warehouse
Historic District
Knoxville, Knox County,
Tennessee

Photo by: Gail L. Guymon
Date: June 28, 1985
Neg: Knoxville/Knox County
Metropolitan Planning
Commission

Knoxville, Tennessee
Facing northeast, view of east
side of 100 block South Gay
Street

#20 of 20