



Isobel Zimmerman House
17111 NE Sandy Blvd.
Portland, OR
ca. 1890

Zimmerman, Jacob, House (1878)
17111 NE Sandy Boulevard
Gresham, Multnomah County, Oregon

1 of 16
Historic view, South (front) elevation,
c. 1890, prior to remodeling

Negative: Isobel Zimmerman
17111 NE Sandy Blvd.
Gresham, OR 97230



Isobel Zimmerman House
17111 NE Sandy Blvd.
Portland, OR
ca. 1905-1910

Zimmerman, Jacob, House (1878)
17111 NE Sandy Boulevard
Gresham, Multnomah County, Oregon

2 of 16
Historic view, South (front) elevation,
c. 1905, showing remodelling of 1899.



Isobel Zimmerman House

17111 NE Sandy Blvd.

Portland, Ore.

August, 1985

View from Sandy Blvd. looking north

Zimmerman, Jacob, House (1878)

17111 NE Sandy Boulevard

Gresham, Multnomah County, Oregon

Juanita Graff Photo, 1985

44222 SE Loudon Road

Corbett, OR 97019

3 of 16

Looking North from Sandy Boulevard



Zimmerman, Jacob, House (1878)
17111 NE Sandy Boulevard
Gresham, Multnomah County, Oregon

Juanita Graff Photo, 1985
44222 SE Loudon Road
Corbett, OR 97019

4 of 16
South (front) elevation



Zimmerman, Jacob, House (1878)
17111 NE Sandy Boulevard
Gresham, Multnomah County, Oregon

Juanita Graff Photo, 1985
44222 SE Loudon Road
Corbett, OR 97019

5 of 16

South (front) and East end of east
wing (kitchen)



Zimmerman, Jacob, House (1878)
17111 NE Sandy Boulevard
Gresham, Multnomah County, Oregon

Juanita Graff Photo, 1985
44222 SE Loudon Road
Corbett, OR 97019

6 of 16

Plant nursery, end of kitchen wing,
looking East.



Zimmerman, Jacob, House (1878)
17111 NE Sandy Boulevard
Gresham, Multnomah County, Oregon

Juanita Graff Photo, 1985
44222 SE Loudon Road
Corbett, OR 97019

7 of 16

Detail of stylized Eastlake ornament,
front porch



Zimmerman, Jacob, House (1878)
17111 NE Sandy Boulevard
Gresham, Multnomah County, Oregon

Juanita Graff Photo, 1985
44222 SE Loudon Road
Corbett, OR 97019

8 of 16
Gable, west wing



Zimmerman, Jacob, House (1878)
17111 NE Sandy Boulevard
Gresham, Multnomah County, Oregon

Juanita Graff Photo, 1985
44222 SE Loudon Road
Corbett, OR 97019

9 of 16
North elevation



Zimmerman, Jacob, House (1878)
17111 NE Sandy Boulevard
Gresham, Multnomah County, Oregon

Juanita Graff Photo, 1985
44222 SE Loudon Road
Corbett, OR 97019

10 of 16

East elevation of woodshed attached
to north side



Zimmerman, Jacob, House (1878)
17111 NE Sandy Boulevard
Gresham, Multnomah County, Oregon

Juanita Graff Photo, 1985
44222 SE Loudon Road
Corbett, OR 97019

11 of 16

Brick dairy building, North (rear)
elevation



Zimmerman, Jacob, House (1878)
17111 NE Sandy Boulevard
Gresham, Multnomah County, Oregon

Juanita Graff Photo, 1985
44222 SE Loudon Road
Corbett, OR 97019

12 of 16

South elevations, vine-covered brick dairy building and 1920s garage. The garage is non-contributing but compatible

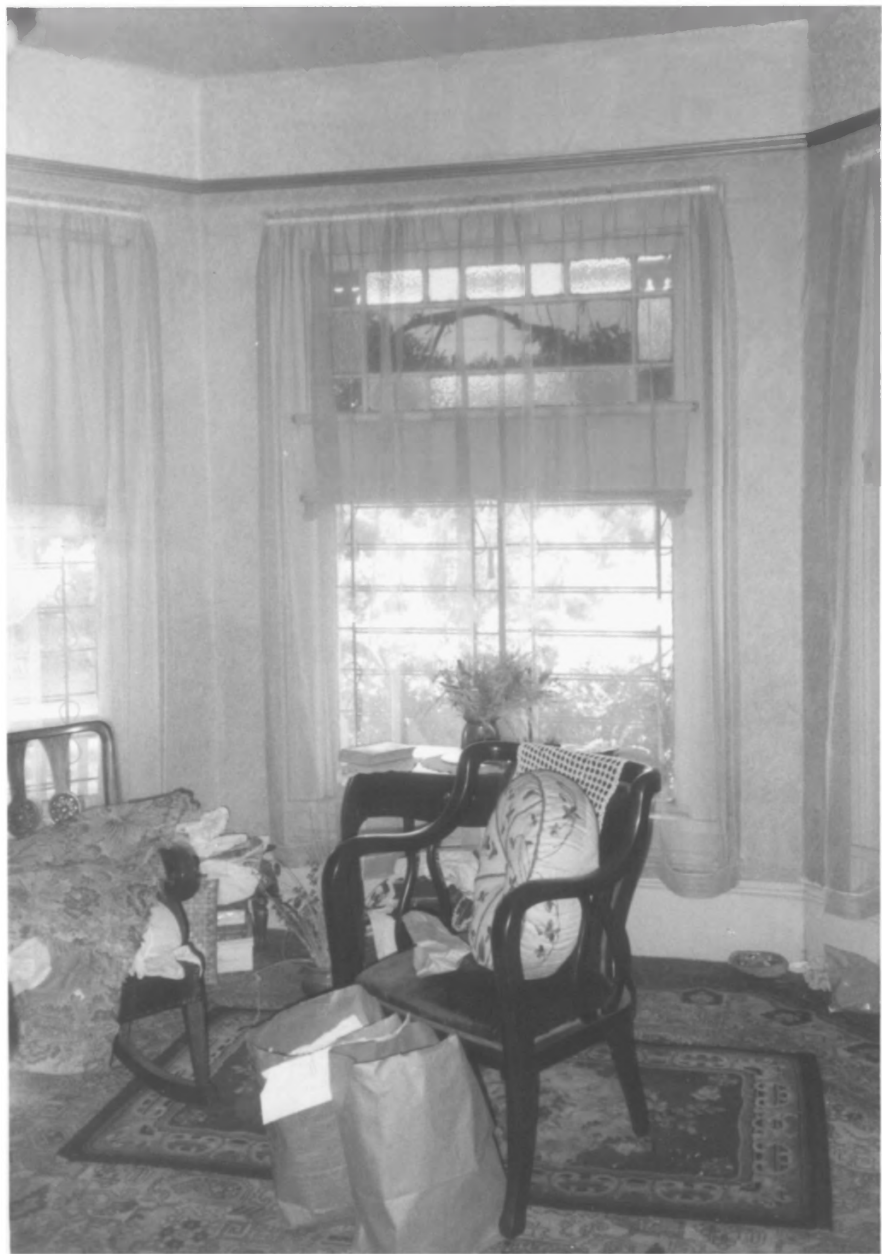


Zimmerman, Jacob, House (1878)
17111 NE Sandy Boulevard
Gresham, Multnomah County, Oregon

Juanita Graff Photo, 1985
44222 SE Loudon Road
Corbett, OR 97019

13 of 16

Entry stairhall, looking North



Zimmerman, Jacob, House (1878)
17111 NE Sandy Boulevard
Gresham, Multnomah County, Oregon

Juanita Graff Photo, 1985
44222 SE Loudon Road
Corbett, OR 97019

14 of 16

Front parlor, looking South



Zimmerman, Jacob, House (1878)
17111 NE Sandy Boulevard
Gresham, Multnomah County, Oregon

Juanita Graff Photo, 1985
44222 SE Loudon Road
Corbett, OR 97019

15 of 16

Chimneypiece, rear parlor



Zimmerman, Jacob, House (1878)
17111 NE Sandy Boulevard
Gresham, Multnomah County, Oregon

Juanita Graff Photo, 1985
44222 SE Loudon Road
Corbett, OR 97019

16 of 16

Stained glass panels, door to
sittingroom