



1. MAIN CABIN, WARING RANCH
2. SHIVWITS PLATEAU, LAKE MEAD NATIONAL RECREATION AREA, ARIZONA

3. **Photo by
Gordon Chappell**

4. MARCH 1976
5. NEGATIVE AT NATIONAL PARK SERVICE WESTERN REGIONAL OFFICE
6. VIEW FROM EAST
7. PHOTO NO. 1 OF 8



1. MAIN CABIN, WARING RANCH
2. SHIVWITS PLATEAU, LAKE MEAD NATIONAL RECREATION
AREA, ARIZONA
3. **Photo by**
Gordon Chappell
4. MARCH 1976
5. NEGATIVE AT NATIONAL PARK SERVICE WESTERN REGIONAL OFFICE
6. VIEW FROM NORTHEAST
7. PHOTO NO 2 OF 8



1. MAIN CABIN, WARING RANCH
2. SHIVWITS PLATEAU, LAKE MEAD
NATIONAL RECREATION AREA, ARIZONA

3. **Photo by**
Gordon Chappell

4. MARCH 1976
5. NEGATIVE AT NATIONAL PARK SERVICE
WESTERN REGIONAL OFFICE
6. DETAIL OF CORNER CONSTRUCTION
7. PHOTO NO. 3 OF 8



1. WARING RANCH

2. SHIVWITS PLATEAU, LAKE MEAD NATIONAL
RECREATION AREA, ARIZONA

3. **Photo by**
Gordon Chappell

4. MARCH 1976

5. NEGATIVE AT NATIONAL PARK SERVICE, WESTERN REGIONAL OFFICE

6. MAIN CABIN SEEN THROUGH CORRAL GATE, VIEW TO SOUTH

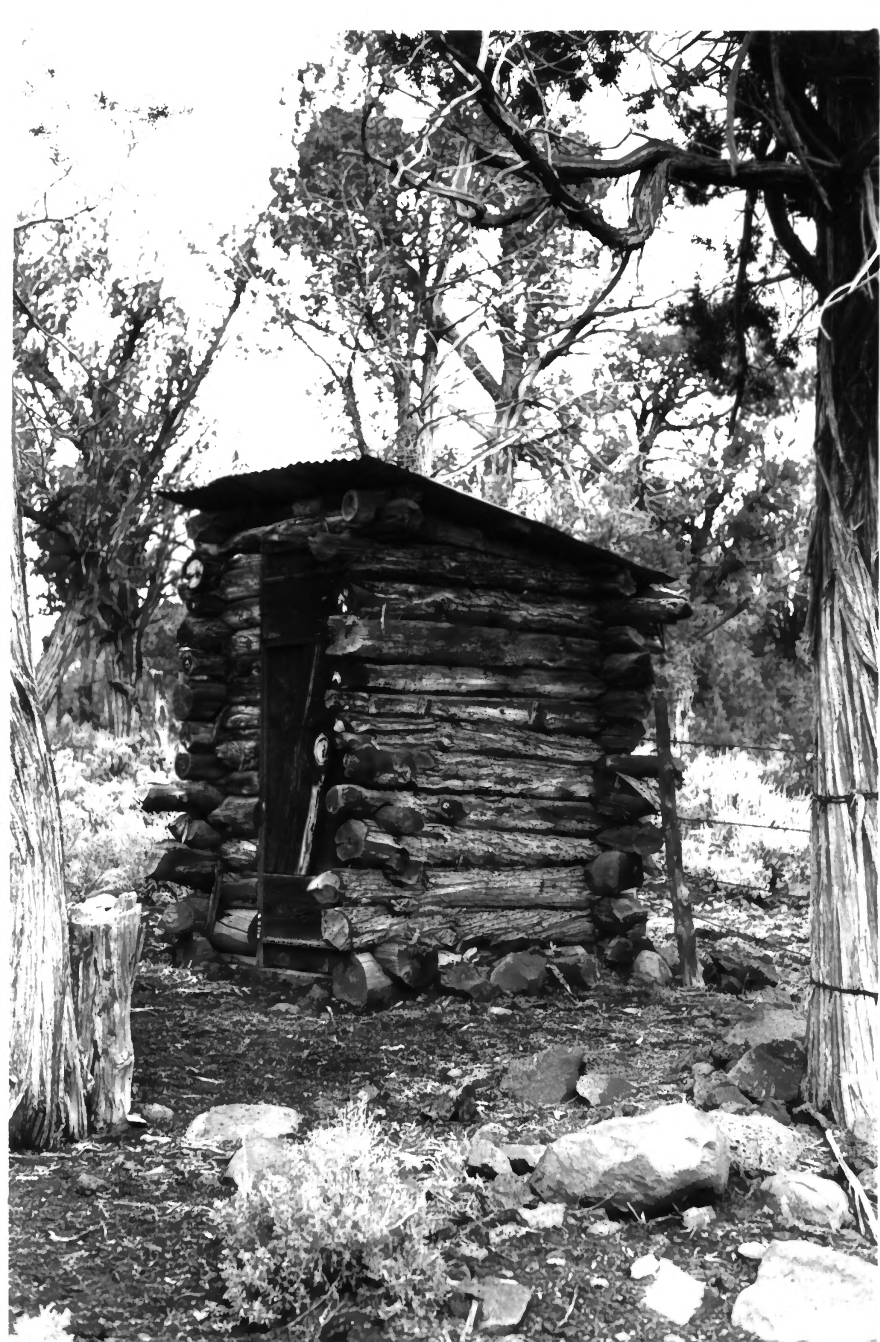
7. PHOTO 4 OF 8



1. WARING RANCH
2. SHIVWITS PLATEAU, LAKE MEAD NATIONAL RECREATION
AREA, ARIZONA

3. **Photo by**
Gordon Chappell

4. MARCH 1976
5. NEGATIVE AT NATIONAL PARK SERVICE WESTERN REGIONAL OFFICE
6. VIEW NORTHEAST OF ORIGINAL 1916 CABIN (NOW GONE), SHED, AND CORRAL
7. PHOTO 5 OF 8



1. LOG PRIVY, WARING RANCH
2. SHIVWITS PLATEAU, LAKE MEAD
NATIONAL RECREATION AREA, ARIZONA
3. Photo by
Gordon Chappell
4. MARCH 1976
5. NEGATIVE AT NATIONAL PARK SERVICE,
WESTERN REGIONAL OFFICE
6. VIEW FROM EAST OF FRONT AND
ONE SIDE
7. PHOTO NO. 6 OF 8



1. CORRAL GATE, WARING RANCH
2. SHIVWITS PLATEAU, LAKE MEAD NATIONAL RECREATION
AREA, ARIZONA
3. **Photo by**
Gordon Chappell
4. MARCH 1976
5. NEGATIVE AT NATIONAL PARK SERVICE, WESTERN
REGIONAL OFFICE
6. GATE TO CIRCULAR PICKET LOG CORRALS
7. PHOTO NO. 7 OF 8



1. PICKET CORRAL, WARING RANCH
2. SHIWITS PLATEAU, LAKE MEAD NATIONAL RECREATION AREA,
ARIZONA

3. **Photo by**
Gordon Chappell

4. MARCH 1976
5. NEGATIVE AT NATIONAL PARK SERVICE WESTERN
REGIONAL OFFICE
6. DETAIL VIEW FROM INSIDE CORRAL
7. PHOTO NO. 8 OF 8