

HISTORICAL SACRAMENTO BUILDING • BUILT IN 1868
A RESTORATION PROJECT & THE FUTURE HOME OF
GORO, Inc. OFFICES
McGUIRE, EATOUGH and FONG • ARCHITECTS
RUST HOUSE MOVERS
DEVELOPED BY GOMEZ & OROPEZA
701 E STREET • EMERGENCY 451-7141 or 332-2220

701 E Street
Sacramento, CA
Linda Dishman
April 1980

602 11th Street, Davis, CA 95616
view to the north
photo #1 of ~~8~~ 12
(front facade)

Anton, Wagner, Dapley
NOV 10 1980

AUG 18 1980



701 E Street
Sacramento, CA

Linda Dishman

April 1980

602 11th Street, Davis, CA 95616

view to the north

photo #2 of ~~8~~ 12

(front and eastern elevation)

Anton, Wagner,
Deupke

AUG 18 1980

NOV 10 1980



OF
BUS
STOP

NO
PARKING

HISTORICAL SCHMIDT BUILDING • BUILT IN 1900
A RESTORATION PROJECT & THE FUTURE HOME OF
GORO, Inc. OFFICES
MOORE, EATOUGH AND PONG • ARCHITECTS
RUST-HOUSE MOVERS
DEVELOPED BY GOMEZ & CROPEZA
701 E STREET • EMERGENCY 451-7414 • 332-2220

701 E Street
Sacramento, CA
Linda Dishman

Auton, Wagner, Duplex

April 1980

602 11th Street, Davis, CA 95616

view to the northeast

AUG 18 1980

photo #3 of ~~8~~ 12

(front and western elevation)

NOV 10 1980



701 E Street
Sacramento, CA
Linda Dishman
April 1980

Auton, Wagon, Duplex

602 11th Street, Davis, CA 95616
view to the east
photo #4 of 12
(west elevation)

AUG 18 1980

NOV 10 1980



NOV 10 1980

Auter, Wagasser, Dwyler

701 E Street
Sacramento, CA
Linda Dishman
April 1980

602 11th Street,
view to the west
photo #5 of 12
(east elevation)

Davis, CA 95616

AUG 18 1980



701 E Street,
Sacramento, CA
Linda Dishman
April 1980

Austin, Wagner
Duplex

602 11th Street, Davis, CA 95616
view to the south
photo #6 of ~~8~~ 12
(rear facade before addition)

AUG 18 1980

NOV 10 1980



701 E Street
Sacramento, CA
Linda Dishman
May 1980

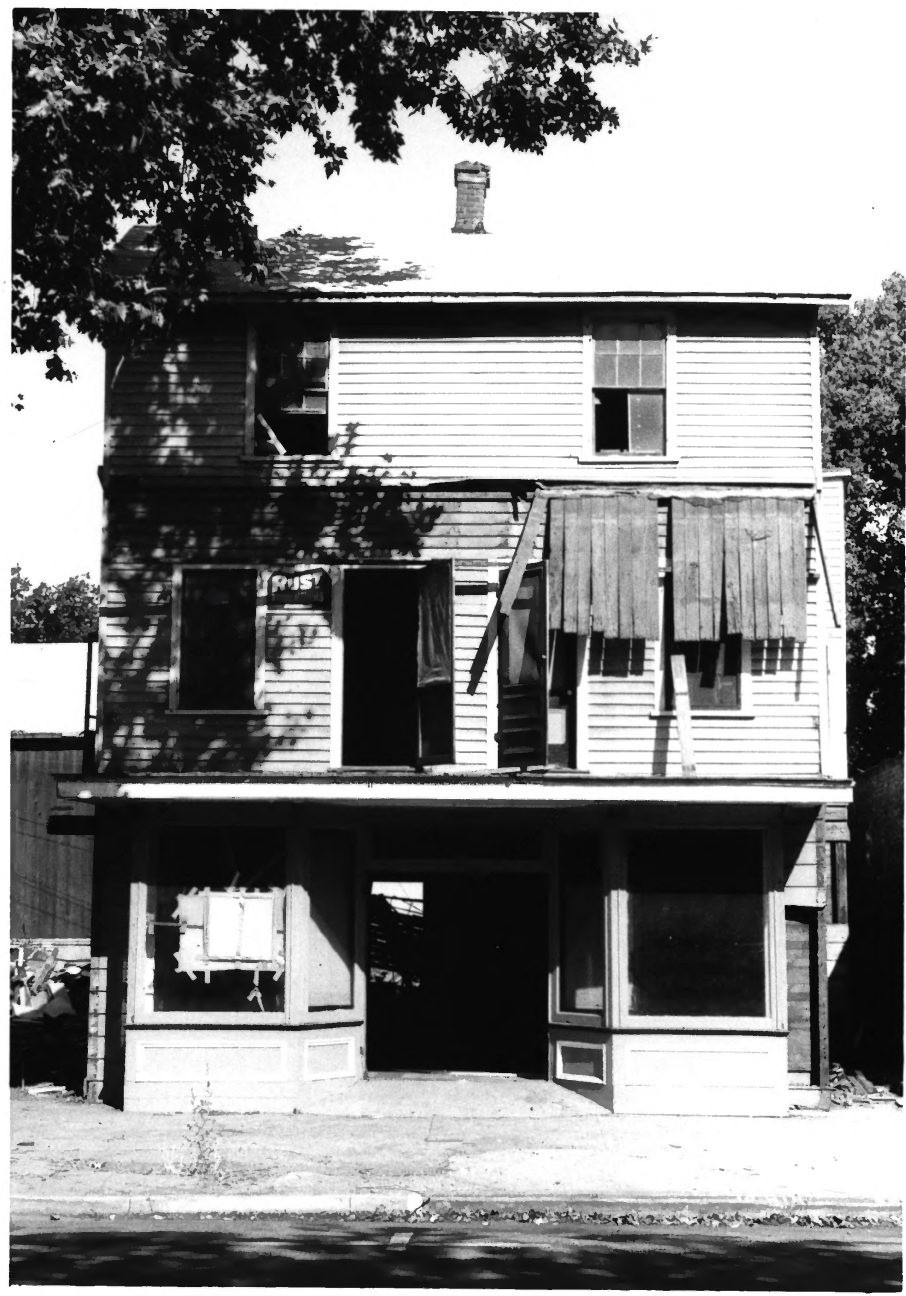
Autumn, Wagner
Duplex

NOV 10 1980

602 11th Street, Davis, CA 95616
view to the south
photo #7 of ~~E~~ 12

AUG 18 1980

(rear facade with addition construction)



701 E Street
Sacramento, CA
Richard Hastings
September 1979

Auton, Wagner,
Dap [unclear] 1980

725 J Street, Sacramento, CA

AUG 18 1980

view to the east
photo #8 of ~~3~~ 72
(front facade at previous location



HISTORICAL SACRAMENTO BUILDING • BUILT IN 1858
A RESTORATION PROJECT & THE FUTURE HOME OF
GORO, Inc. OFFICES
McGUIRE, SATOUSH AND FONG ARCHITECTS
RUST HOUSE MOVERS
DEVELOPED BY GOMEZ & ORTEGA
701 E STREET • EMERGENCY 451-7141 or 311 (24/7)

NOV 10 1980

ANTON, WAGNER, DUPLEX

Sacramento, Sacramento County, California

July, 1980

Linda Dishman, Photographer

9 of 12

AUG 18 1980

Camera facing north



ANTON WAGNER, DUPLEX

Sacramento, Sacramento County, California

July, 1980

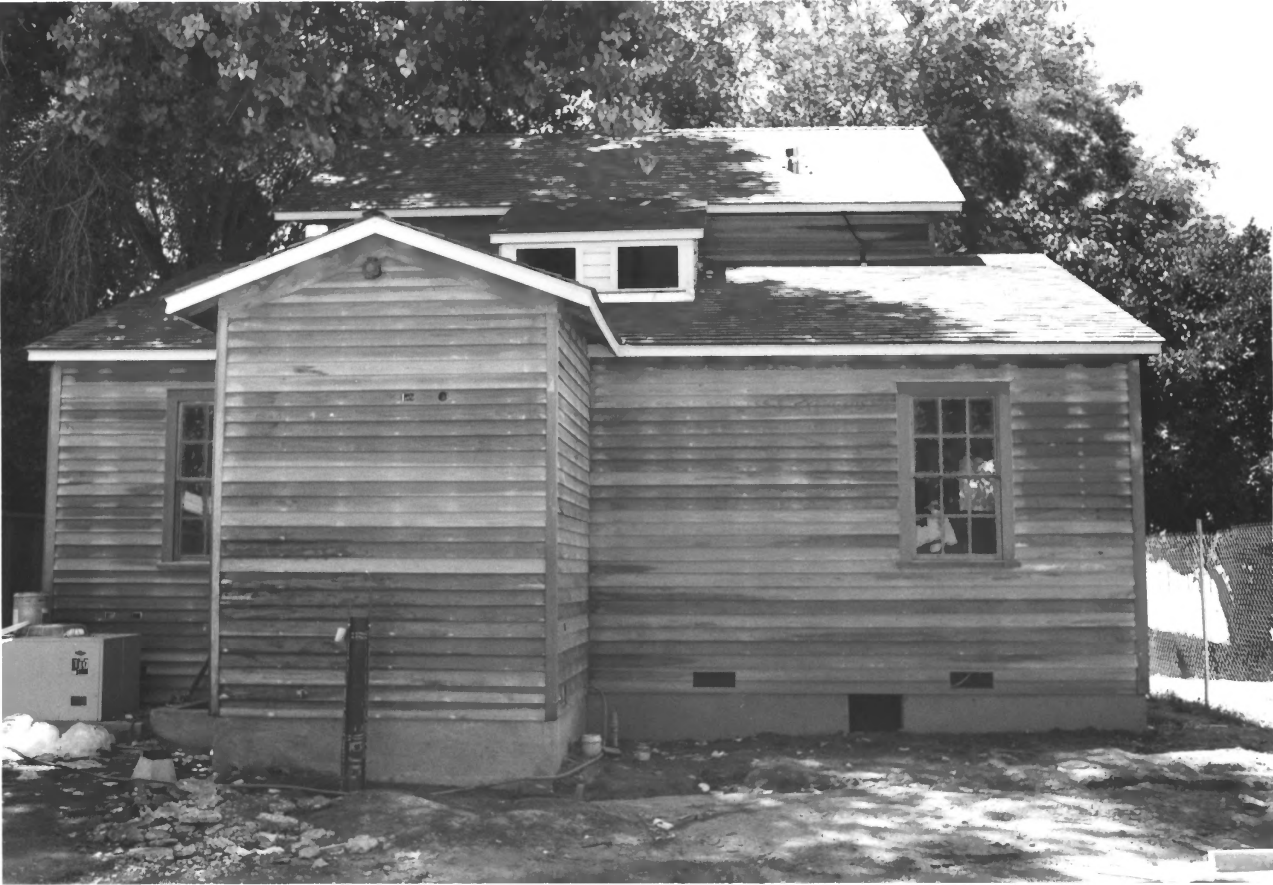
Linda Dishman, Photographer

NOV 10 1980

10 of 12

AUG 18 1980

Camera facing east



NOV 10 1980

ANTON, WAGNER, DUPLEX

Sacramento, Sacramento County, California

July, 1980

Linda Dishman, Photographer

11 of 12

Camera facing south

AUG 18 1980



1868
HOME OF
S
ECTS
MEZA
332-2220

ANTON, WAGNER, DUPLEX

Sacramento, Sacramento County, California

July, 1980

10 1980

Linda Dishman, Photographer

12 of 12

AUG 18 1980

Camera facing northwest