



1. Administration and Museum Building,
NPS Building #20. (Significant.)

Rear patio looking east-northeast
toward residential complex.

White Sands National Monument
Historic District
Alamogordo vicinity, New Mexico

Betsy Swanson
825 Calle Mejia #1223
Santa Fe, N.M. 87501

December 1985



1. Administration and Museum Building,
NPS Bldg #20. (Significant.)

Superintendent's office on south-
west side of building, showing
corner fireplace, vigas and latias,
painted vertical plank door, New
Mexican Colonial Style chair.

White Sands National Monument
Historic District
Alamogordo vicinity, New Mexico

Betsy Swanson
825 Calle Mejia #1223
Santa Fe, N.M. 87501

December 1985



1. Administration and Museum Building,
NPS Bldg #20. (Significant.)

Ranger's office at south corner
of building showing vigas, corner
fireplace, and New Mexican Colonial
Style trastero or cabinet.

White Sands National Monument
Historic District

Alamogordo vicinity, New Mexico

Betsy Swanson
825 Calle Mejia #1223
Santa Fe, N.M. 87501

December 1985



1. Administration and Museum Building,
NPS Bldg #20. (Significant.)

Ceiling of front portal showing
vigas, latias, and tin light
fixture.

White Sands National Monument
Historic District
Alamogordo vicinity, New Mexico

Betsy Swanson
825 Calle Mejia #1223
Santa Fe, N.M. 87501

December 1985



1. Administration and Museum Building.
NPS Bldg #20. (Significant.)

Lobby ceiling showing vigas and
corbels.

White Sands National Monument
Historic District
Alamogordo vicinity, New Mexico

Betsy Swanson
825 Calle Mejia #1223
Santa Fe, N.M. 87501

December 1985



1. Administration and Museum Building,
NPS Bldg #20. (Significant.)

Lobby looking toward entrance
foyer showing vigas with corbels,
balcony, small wooden pivoted win-
dow, tin chandelier, New Mexican
Colonial Style furniture, tile
floor, 1976 exhibit installation
and wall mural.

White Sands National Monument
Historic District
Alamogordo vicinity, New Mexico

Betsy Swanson
825 Calle Mejia #1223
Santa Fe, N.M. 87501

December 1985



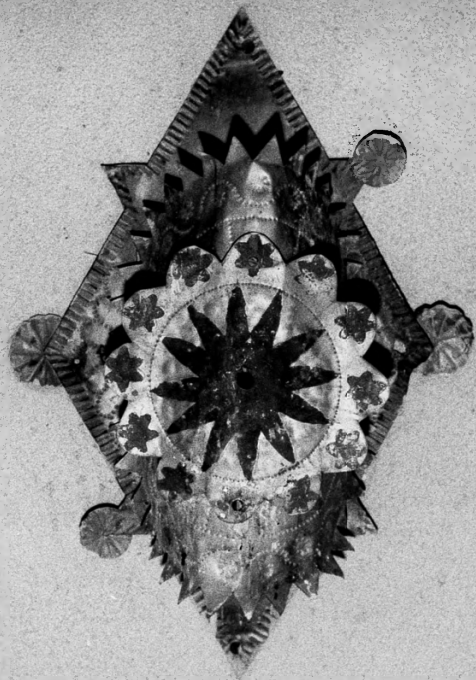
1. Administration and Museum Building,
NPS Bldg #20. (Significant.)

East corner of portal in rear patio showing adzed paneled door, tin light fixture, bench in New Mexican Colonial Style, handicapped access ramp, false ceiling for bat control.

White Sands National Monument
Historic District
Alamogordo vicinity, New Mexico

Betsy Swanson
825 Calle Mejia #1223
Santa Fe, N.M. 87501

December 1985



1. Administration and Museum Building,
NPS Bldg #20. (Significant.)

Painted, cut and hammered tin light
fixture on wall of building facing
rear patio.

White Sands National Monument
Historic District
Alamogordo vicinity, New Mexico.

Betsy Swanson
825 Calle Mejia #1223
Santa Fe, N.M. 87501

December 1985



1. Administration and Museum Building,
NPS Bldg #20. (Significant.)

East corner of portal in rear patio showing log column with zapatas, adzed lintel, viga ends and false ceiling for bat control that covers vigas under portal, scored cement floor of portal, paneled door, tin light fixture, wooden

bench in New Mexican Colonial Style.

White Sands National Monument
Historic District
Alamogordo vicinity, New Mexico

Betsy Swanson
825 Calle Mejia #1223
Santa Fe, N.M. 87501

December 1985



WHITE SANDS
NATIONAL MONUMENT
VISITOR CENTER

WHITE SANDS
NATIONAL MONUMENT
VISITOR CENTER
INFORMATION - SCENIC DRIVE
MUSEUM

1. Administration and Museum Building,
NPS Bldg #20. (Significant.)

Front facade, looking northwest.

White Sands National Monument
Historic District
Alamogordo vicinity, New Mexico

Betsy Swanson
825 Calle Mejia #1223
Santa Fe, N.M. 87501

December 1985



1. Administration and Museum Building,
NPS Bldg #20. (Significant.)

Rear view looking southeast.

White Sands National Monument
Historic District
Alamogordo vicinity, New Mexico

Betsy Swanson
825 Calle Mejia #1223
Santa Fe, N.M. 87501

June 1986



1. Administration and Museum Building,
NPS Bldg #20, left. (Significant.)
2. Comfort Station, NPS Bldg #21, right
(Significant.)
Rear view looking southeast, showing asphalt parking lot constructed 1985-6.

White Sands National Monument
Historic District
Alamogordo vicinity, New Mexico

Betsy Swanson
825 Calle Mejia #1223
Santa Fe, N.M. 87501

June 1986



2. Comfort Station, NPS Bldg #21, left (Significant.)
1. Administration and Museum Building, NPS Bldg #20, center. (Significant.)
6. Residence, NPS Bldg #1, right center. (Significant.)
8. Superintendent's Residence, NPS Bldg #3, right. (Significant.)

View from monument entrance looking north.

White Sands National Monument
Historic District
Alamogordo vicinity, New Mexico

Betsy Swanson
825 Calle Mejia #1223
Santa Fe, N.M. 87501

June 1986



2. Comfort Station, NPS Bldg #21,
left. (Significant.)
1. Administration and Museum Building
NPS Bldg #20, right. (Significant.)

Looking north at front facades
showing concrete walkway installed
1985-6 in place of original asphalt
entrance road to dunes.

White Sands National Monument
Historic District
Alamogordo vicinity, New Mexico

Betsy Swanson
825 Calle Mejia #1223
Santa Fe, N.M. 87501

June 1986

Official Cars
← Only →



VISITOR CENTER
9:00 AM - 7:00 PM

•	Mount of Sion
•	Public tables-shades
Museum	Open 8:00 AM
Center	Open 7:00 PM
Gifts	Open 8:00 AM
Cinema	Open 10:00 PM

2. Comfort Station, NPS Bldg #21,
left. (Significant.)
1. Administration and Museum Building,
NPS Bldg #20, right. (Significant.)

Looking northwest at front facades,
showing concrete walkway between
buildings that replaced original
asphalt road to dunes in 1985-6,
and remnants of wooden open portal
that originally connected buildings
across road.

White Sands National Monument
Historic District
Alamogordo vicinity, New Mexico

Betsy Swanson
825 Calle Mejia #1223
Santa Fe, N.M. 87501
June 1986



2. Comfort Station, NPS Bldg #21, left.
(Significant.)
1. Administration and Museum Building,
NPS Bldg #20, right. (Significant.)

View from highway entrance showing
walled asphalt parking lot, looking
north.

White Sands National Monument
Historic District
Alamogordo vicinity, New Mexico

Betsy Swanson
825 Calle Mejia #1223
Santa Fe, N.M. 87501

June 1986



2. Comfort Station, NPS Bldg #21,
left. (Significant.)
1. Administration and Museum Building,
NPS Bldg #20, right. (Significant.)

Looking north at front facades
showing original asphalt entrance
road to dunes passing between
buildings, before relocation of
road in 1985-6.

White Sands National Monument
Historic District
Alamogordo vicinity, New Mexico

Betsy Swanson
825 Calle Mejia #1223
Santa Fe, N.M. 87501

December 1985



2. Comfort Station, NPS Bldg #21.
(Significant.)

Looking northwest at front facade.

White Sands National Monument
Historic District
Alamogordo vicinity, New Mexico

Betsy Swanson
825 Calle Mejia #1223
Santa Fe, N.M. 87501

December 1985



2. Comfort Station, NPS Bldg #21.
(Significant.)

Looking north at front facade.

White Sands National Monument
Historic District
Alamogordo vicinity, New Mexico

Betsy Swanson
825 Calle Mejia #1223
Santa Fe, N.M. 87501

December 1985



~~MS 100~~

2. Comfort Station, NPS Bldg #21.
(Significant.)

Cut-and-hammered-tin light
fixture, vigas and latias, ceil-
ing of ladies' room.

White Sands National Monument
Historic District
Alamogordo vicinity, New Mexico

Betsy Swanson
825 Calle Mejia #1223
Santa Fe, N.M. 87501

December 1985



2. Comfort Station, NPS Bldg #21.
(Significant.)

Entry alcove of ladies' room,
showing tin light fixture, latias,
adzed, paneled door with grille.

White Sands National Monument
Historic District
Alamogordo vicinity, New Mexico

Betsy Swanson
825 Calle Mejia #1223
Santa Fe, N.M. 87501

December 1985

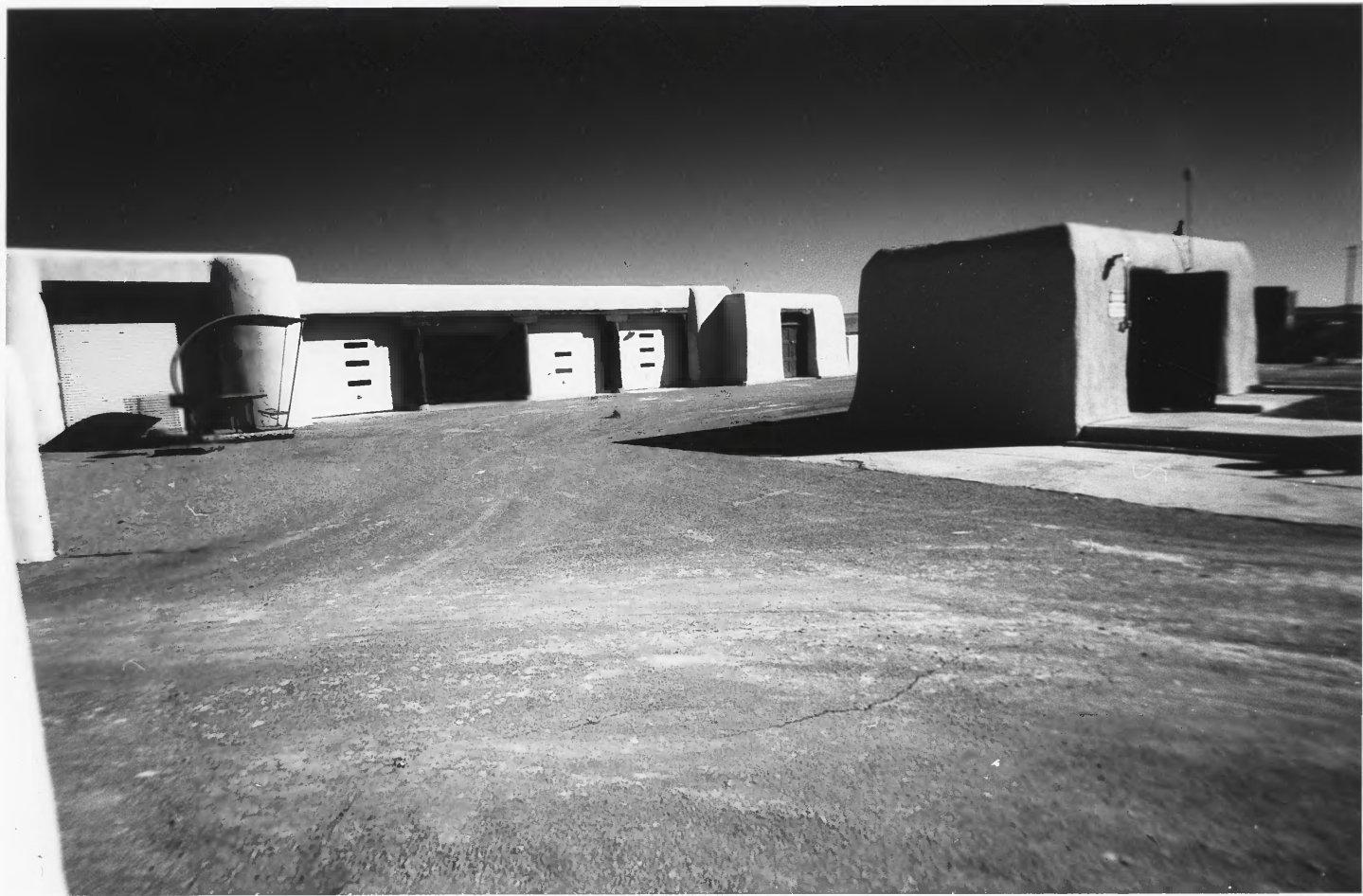


3. Utility Building, NPS Bldg #31A&B.
Looking north.

White Sands National Monument
Historic District
Alamogordo vicinity, New Mexico

Betsy Swanson
825 Calle Mejia #1223
Santa Fe, N.M. 87501

December 1985



3. Utility Building, NPS Bldg #31A&B,
(Significant), on left at rear.
4. Gas and Oil Building, NPS Bldg #30,
(Significant), at right.

Looking southeast.

White Sands National Monument
Historic District
Alamogordo vicinity, New Mexico

Betsy Swanson
825 Calle Mejia #1223
Santa Fe, N.M. 87501

December 1985



View of Maintenance Complex from
Visitor Center ~~near~~ parking lot,
looking south. On left is rear of
(3) Utility Building (Significant),
and on right is rear of ~~(10)~~ Paint
Shop (Supporting).

White Sands National Monument
Historic District
Alamogordo vicinity, New Mexico

Betsy Swanson
825 Calle Mejia #1223
Santa Fe, N.M. 87501

June 1986



← PARKING
MUSEUM
URIOS-REFRESHMENTS →

Rear view of Maintenance Complex,
looking south from juncture of
entrance road to dunes and service
road to complex.

From left to right, rear of (3) Util-
ity Building (Significant), rear of
(10) Paint Shop (Supporting), and
front of (5) Warehouse and Laundry
(Significant).

White Sands National Monument
Historic District
Alamogordo vicinity, New Mexico

Betsy Swanson
825 Calle Mejia #1223
Santa Fe, N.M. 87501

June 1986



4. Gas and Oil Building, NPS Bldg #30,
(Significant.)

Front, looking north.

White Sands National Monument
Historic District
Alamogordo vicinity, New Mexico

Betsy Swanson
825 Calle Mejia #1223
Santa Fe, N.M. 87501

December 1985

Bldg 30



4. Gas and Oil Building, NPS Bldg #30,
(Significant), at left.
3. Utility Building, NPS Bldg #31A&B,
center, (Significant.)

In background at right is Visitor
Center and Residential Complex.
Looking northeast.

White Sands National Monument
Historic District

Alamogordo vicinity, New Mexico

Betsy Swanson
825 Calle Mejia #1223
Santa Fe, N.M. 87501

December 1985



5. Warehouse and Laundry, NPS Bldg #32 showing stuccoed adobe wall attached to building. Building and wall are Significant.

Looking northwest.

White Sands National Monument
Historic District
Alamogordo vicinity, New Mexico

Betsy Swanson
825 Calle Mejia #1223
Santa Fe, N.M. 87501

December 1985



5. Warehouse and Laundry, NPS Bldg #32
(Significant.)

Looking west, front facade.

White Sands National Monument
Historic District
Alamogordo vicinity, New Mexico

Betsy Swanson
825 Calle Mejia #1223
Santa Fe, N.M. 87501

June 1986



5. Warehouse and Laundry, NPS Bldg #32
(Significant.) Rear view.
14. Storage shed. (Non-contributing.)
15. Storage shed. (Non-contributing.)

Looking southeast.

White Sands National Monument
Historic District
Alamogordo vicinity, New Mexico

Betsy Swanson
825 Calle Mejia #1223
Santa Fe, N.M. 87501

June 1986

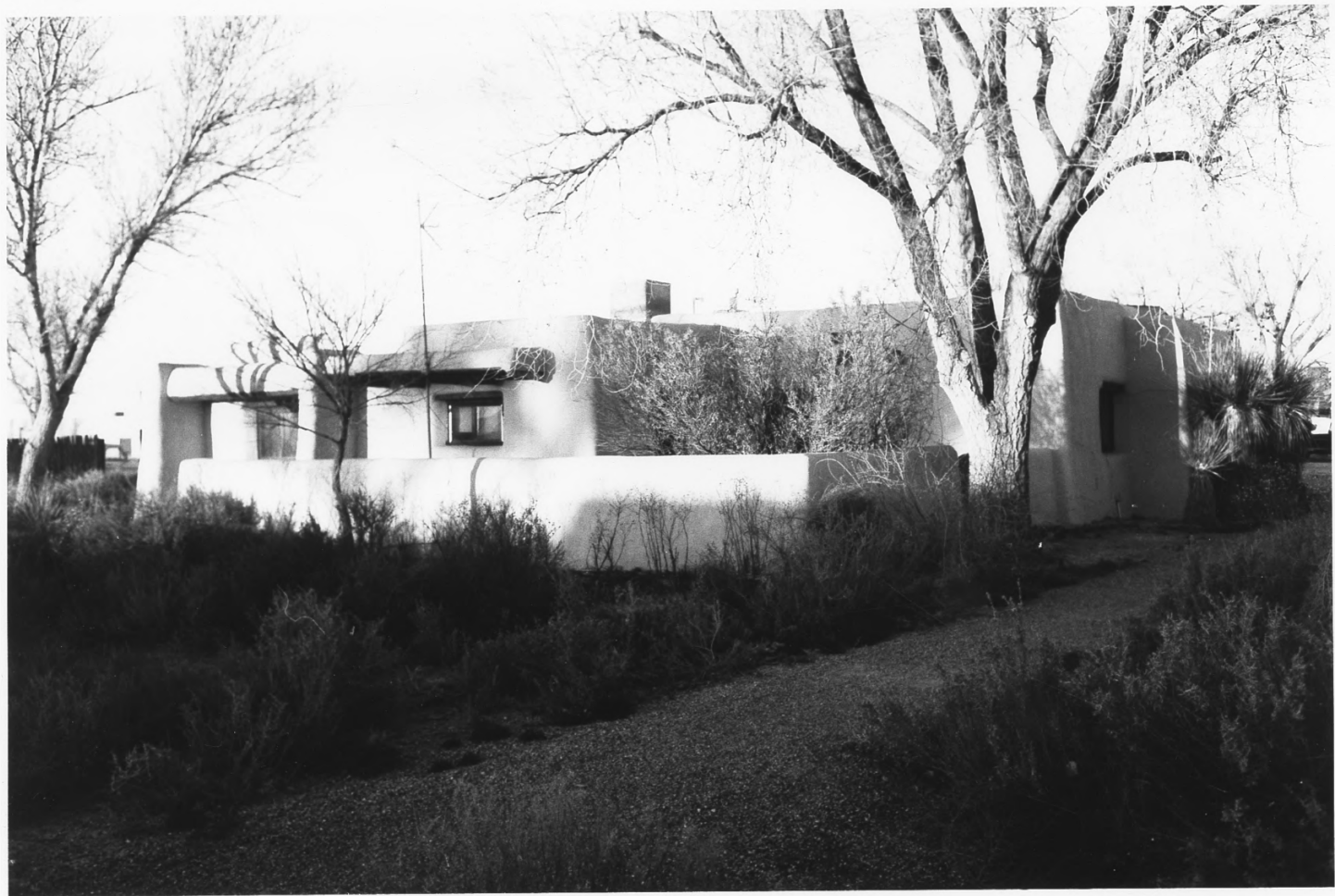


View of Maintenance Complex looking northwest, showing (5) Warehouse and Laundry on left, (4) Gas and Oil Building in center, and (3) Utility Building at right. All are Significant.

White Sands National Monument
Historic District
Alamogordo vicinity, New Mexico

Betsy Swanson
825 Calle Mejia #1223
Santa Fe, N.M. 87501

December 1985



6. Residence, NPS Bldg #1, (Significant.)

Rear looking north.

White Sands National Monument
Historic District
Alamogordo vicinity, New Mexico

Betsy Swanson
825 Calle Mejia #1223
Santa Fe, N.M. 87501

December 1985

BS #1



6. Residence, NPS Building #1, (Significant.)

Front facade looking south.

White Sands National Monument
Historic District
Alamogordo vicinity, New Mexico

Betsy Swanson
825 Calle Mejia #1223
Santa Fe, N.M. 87501

June 1986



Original stuccoed adobe wall of front parking lot with original wooden paneled gate with wooden grille and wrought-iron hardware, walkway leading to residential complex, looking north. In background: (6) Residence, NPS Bldg #1; (and) (7) Residence, NPS Bldg #2. Wall, gate and buildings are significant.

White Sands National Monument
Historic District
Alamogordo vicinity, New Mexico

Betsy Swanson
825 Calle Mejia #1223
Santa Fe, N.M. 87501

December 1985



7. Residence, NPS Bldg #2. (Significant).

Front facade looking north.

White Sands National Monument
Historic District
Alamogordo vicinity, New Mexico

Betsy Swanson
825 Calle Mejia #1223
Santa Fe, N.M. 87501

December 1985



7. Residence, NPS Bldg #2. (Significant).

Rear looking southeast.

White Sands National Monument
Historic District
Alamogordo vicinity, New Mexico

Betsy Swanson
825 Calle Mejia #1223
Santa Fe, N.M. 87501

December 1985

Res #2



8. Superintendent's Residence, NPS
Bldg #3. (Significant).

Front looking north.

White Sands National Monument
Historic District
Alamogordo vicinity, New Mexico

Betsy Swanson
825 Calle Mejia #1223
Santa Fe, N.M. 87501

December 1985

Res #3



8. Superintendent's Residence, NPs
Bldg #3. (Significant.)

Rear looking southeast.

White Sands National Monument
Historic District
Alamogordo vicinity, New Mexico

Betsy Swanson
825 Calle Mejia #1223
Santa Fe, N.M. 87501

June 1986



View inside Residence Complex looking south, showing circular gravel drive, grassy plot with cottonwood trees enclosed by a post-and-rail fence. The fence is recent. At left (8) Superintendent's Residence rear facade and at right (6) Residence, front facade, both Significant.

White Sands National Monument
Historic District
Alamogordo vicinity, New Mexico

Betsy Swanson
825 Calle Mejia #1223
Santa Fe, N.M. 87501

June 1986



9. Residence, NPS Building #4.
(Supporting.)

Looking north.

White Sands National Monument
Historic District
Alamogordo vicinity, New Mexico

Betsy Swanson
825 Calle Mejia #1223
Santa Fe, N.M. 87501

June, 1986.



10. Paint Shop and Flammables Storage
Building, NPS Bldg #45.
(Supporting.)

Looking north.

White Sands National Monument
Historic District
Alamogordo vicinity, New Mexico

Betsy Swanson
825 Calle Mejia #1223
Santa Fe, N.M. 87501

December 1985



Rear view of Maintenance Complex,
looking south from juncture of
entrance road to dunes and service
road to complex

In foreground at left is (10) Paint
Shop (Supporting), and at right is
(5) Warehouse and Laundry (Signifi-
cant).

White Sands National Monument
Historic District
Alamogordo vicinity, New Mexico

Betsy Swanson
825 Calle Mejia #1223
Santa Fe, N.M. 87501

June 1986



11. House trailer, NPS Building #12,
foreground. (Non-contributing.)
12. House trailer, NPS Building #13,
background. (Non-contributing.)
13. Storage shed. (Non-contributing.)

Looking northeast.

White Sands National Monument
Historic District
Alamogordo vicinity, New Mexico

Betsy Swanson
825 Calle Mejia #1223
Santa Fe, N.M. 87501

December, 1985



DUNE AREA ↑
VISITOR CENTER →

View of Maintenance Complex from
junction of monument entrance road
and highway, looking northwest.
Small wall sections were erected
1985-6 and are Supporting.

White Sands National Monument
Historic District
Alamogordo vicinity, New Mexico

Betsy Swanson
825 Calle Mejia #1223
Santa Fe, N.M. 87501

June 1986