



UNITED STATES DEPARTMENT OF THE INTERIOR  
NATIONAL PARK SERVICE

NATIONAL REGISTER OF HISTORIC PLACES  
PROPERTY PHOTOGRAPH FORM

(Type all entries - attach to or enclose with photograph)

STATE California	
COUNTY San Diego	
FOR NPS USE ONLY	
ENTRY NUMBER JUN 26 1972	DATE

1. NAME

COMMON: Santa Fe Depot

AND/OR HISTORIC: Union Station

2. LOCATION

STREET AND NUMBER:

1050 Kettner

CITY OR TOWN:

San Diego

STATE:

California

CODE

06

COUNTY:

San Diego

CODE

073

3. PHOTO REFERENCE

PHOTO CREDIT: Robert Mosher, FAIA

DATE OF PHOTO: 1972

NEGATIVE FILED AT:

San Diego Chap. A.I.A., 2827 Presidio Drive, San Diego

4. IDENTIFICATION

DESCRIBE VIEW, DIRECTION, ETC.

2. Dome Detail

SEE INSTRUCTIONS



UNITED STATES DEPARTMENT OF THE INTERIOR  
NATIONAL PARK SERVICE

NATIONAL REGISTER OF HISTORIC PLACES

PROPERTY PHOTOGRAPH FORM

(Type all entries - attach to or enclose with photograph)

STATE

California

COUNTY

San Diego

FOR NPS USE ONLY

ENTRY NUMBER  
JUN 26 1972

DATE

1. NAME

COMMON: Santa Fe Depot

AND/OR HISTORIC: Union Station

2. LOCATION

STREET AND NUMBER:

1050 Kettner

CITY OR TOWN:

San Diego

STATE:

California

CODE

06

COUNTY:

San Diego

CODE

073

3. PHOTO REFERENCE

PHOTO CREDIT: Robert Mosher, FAIA

DATE OF PHOTO: 1972

NEGATIVE FILED AT:

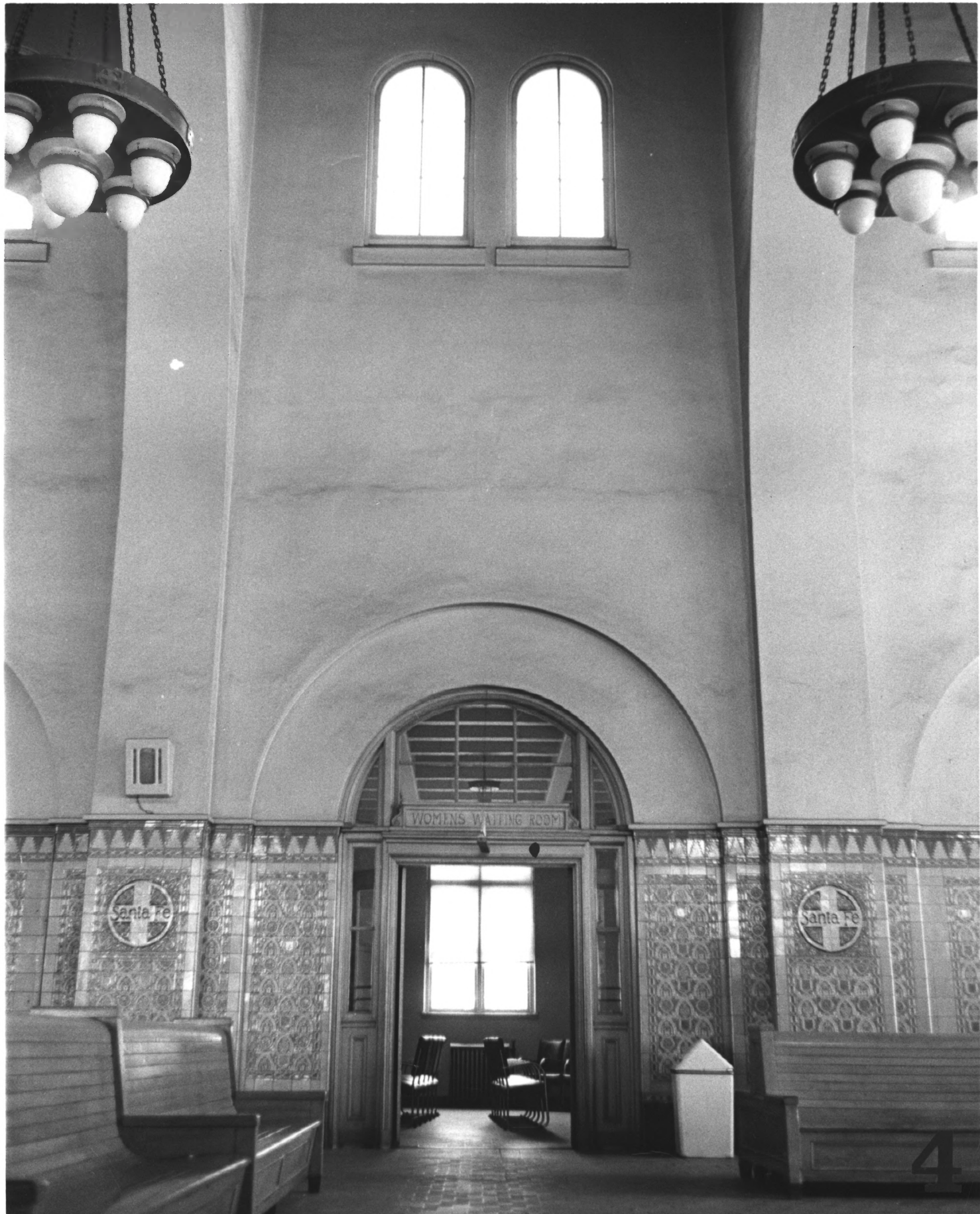
San Diego Chap. A.I.A., 2827 Presidio Drive, San Diego

4. IDENTIFICATION

DESCRIBE VIEW, DIRECTION, ETC.

3. Interior looking North

SEE INSTRUCTIONS



WOMENS WAITING ROOM

Santa Fe

Santa Fe

4

UNITED STATES DEPARTMENT OF THE INTERIOR  
NATIONAL PARK SERVICE

NATIONAL REGISTER OF HISTORIC PLACES  
PROPERTY PHOTOGRAPH FORM

(Type all entries - attach to or enclose with photograph)

STATE California	
COUNTY San Diego	
FOR NPS USE ONLY	
ENTRY NUMBER JUN 26 1972	DATE

1. NAME

COMMON: Santa Fe Depot

AND/OR HISTORIC: Union Station

2. LOCATION

STREET AND NUMBER:

1050 Kettner

CITY OR TOWN:

San Diego

STATE:

California

CODE

06

COUNTY:

San Diego

CODE

073

3. PHOTO REFERENCE

PHOTO CREDIT: Robert Mosher, FAIA

DATE OF PHOTO: 1972

NEGATIVE FILED AT:

San Diego Chap. A.I.A., 2827 Presidio Drive, San Diego

4. IDENTIFICATION

DESCRIBE VIEW, DIRECTION, ETC.

4. Interior wall detail

SEE INSTRUCTIONS



SMOKING ROOM

Santa Fe

RES  
TIME  
TRAIN NO. 115  
TRAIN NO. 773  
OFFICE  
AM  
2:34 PM '80

Amtrak  
America's first nationwide passenger rail system

UNITED STATES DEPARTMENT OF THE INTERIOR  
NATIONAL PARK SERVICE

NATIONAL REGISTER OF HISTORIC PLACES  
PROPERTY PHOTOGRAPH FORM

(Type all entries - attach to or enclose with photograph)

STATE

California

COUNTY

San Diego

FOR NPS USE ONLY

ENTRY NUMBER

JUN 28 1972

DATE

1. NAME

COMMON: Santa Fe Depot

AND/OR HISTORIC: Union Station

2. LOCATION

STREET AND NUMBER:

1050 Kettner

CITY OR TOWN:

San Diego

STATE:

California

CODE

06

COUNTY:

San Diego

CODE

073

3. PHOTO REFERENCE

PHOTO CREDIT: Robert Mosher, FAIA

DATE OF PHOTO: 1972

NEGATIVE FILED AT:

San Diego Chap. A.I.A., 2827 Presidio Drive, San Diego

4. IDENTIFICATION

DESCRIBE VIEW, DIRECTION, ETC.

5. Interior Doorway

SEE INSTRUCTIONS





UNITED STATES DEPARTMENT OF THE INTERIOR  
NATIONAL PARK SERVICE

NATIONAL REGISTER OF HISTORIC PLACES  
PROPERTY PHOTOGRAPH FORM

(Type all entries - attach to or enclose with photograph)

STATE

California

COUNTY

San Diego

FOR NPS USE ONLY

ENTRY NUMBER

DATE

JUN 26 1972

1. NAME

COMMON: Santa Fe Depot

AND/OR HISTORIC: Union Station

2. LOCATION

STREET AND NUMBER:

1050 Kettner

CITY OR TOWN:

San Diego

STATE:

California

CODE

06

COUNTY:

San Diego

CODE

073

3. PHOTO REFERENCE

PHOTO CREDIT: Robert Mosher, FAIA

DATE OF PHOTO: 1972

NEGATIVE FILED AT:

San Diego Chap. A.I.A., 2827 Presidio Drive, San Diego

4. IDENTIFICATION

DESCRIBE VIEW, DIRECTION, ETC.

6. Wainscot Detail

SEE INSTRUCTIONS



WAITING ROOM

UNITED STATES DEPARTMENT OF THE INTERIOR  
NATIONAL PARK SERVICE

NATIONAL REGISTER OF HISTORIC PLACES  
PROPERTY PHOTOGRAPH FORM

(Type all entries - attach to or enclose with photograph)

STATE	
California	
COUNTY	
San Diego	
FOR NPS USE ONLY	
ENTRY NUMBER	DATE
	JUN 26 1972

SEE INSTRUCTIONS

1. NAME

COMMON: Santa Fe Depot

AND/OR HISTORIC: Union Station

2. LOCATION

STREET AND NUMBER:

1050 Kettner

CITY OR TOWN:

San Diego

STATE:

California

CODE

06

COUNTY:

San Diego

CODE

073

3. PHOTO REFERENCE

PHOTO CREDIT: Robert Mosher, FAIA

DATE OF PHOTO: 1972

NEGATIVE FILED AT:

San Diego Chap. A.I.A., 2827 Presidio Drive, San Diego

4. IDENTIFICATION

DESCRIBE VIEW, DIRECTION, ETC.

7. Exterior - Doorway



UNITED STATES DEPARTMENT OF THE INTERIOR  
NATIONAL PARK SERVICE

NATIONAL REGISTER OF HISTORIC PLACES  
PROPERTY PHOTOGRAPH FORM

(Type all entries - attach to or enclose with photograph)

STATE California	
COUNTY San Diego	
FOR NPS USE ONLY	
ENTRY NUMBER JUN 26 1972	DATE

1. NAME

COMMON: Santa Fe Depot  
AND/OR HISTORIC: Union Station

2. LOCATION

STREET AND NUMBER:  
1050 Kettner

CITY OR TOWN:  
San Diego

STATE:  
California

CODE

06

COUNTY:

San Diego

CODE

073

3. PHOTO REFERENCE

PHOTO CREDIT: Robert Mosher, FAIA

DATE OF PHOTO: 1972

NEGATIVE FILED AT:

San Diego Chap. A.I.A., 2827 Presidio Drive, San Diego

4. IDENTIFICATION

DESCRIBE VIEW, DIRECTION, ETC.

8. Covered concourse on west side - looking north.

SEE INSTRUCTIONS