



①

1. Idlewild.
2. Talladega County, Alabama
3. Camille A Bowman
4. Dec 2 1992
5. Negatives - Alabama Historical Commission
6. Facing NW



②

1. Idlewild
2. Talladega County, Alabama
3. Camille A Bowman
4. 2 Dec 92
5. Negatives - Alabama Historical Commission
6. Front doors - Facing W



12 2'92

③

1. Idlewild

2. Talladega County, Alabama

3. Camille A Bowman

4. 2 Dec 92

5. Negatives; Alabama Historical Commission

6. Up - Facing SW



④

1. Idlewild

2. Talladega County, Alabama

3. Camille A Bowman

4. 2 Dec 92

5. Negatives: Alabama Historical Commission

6. Exterior - overall
facing SE



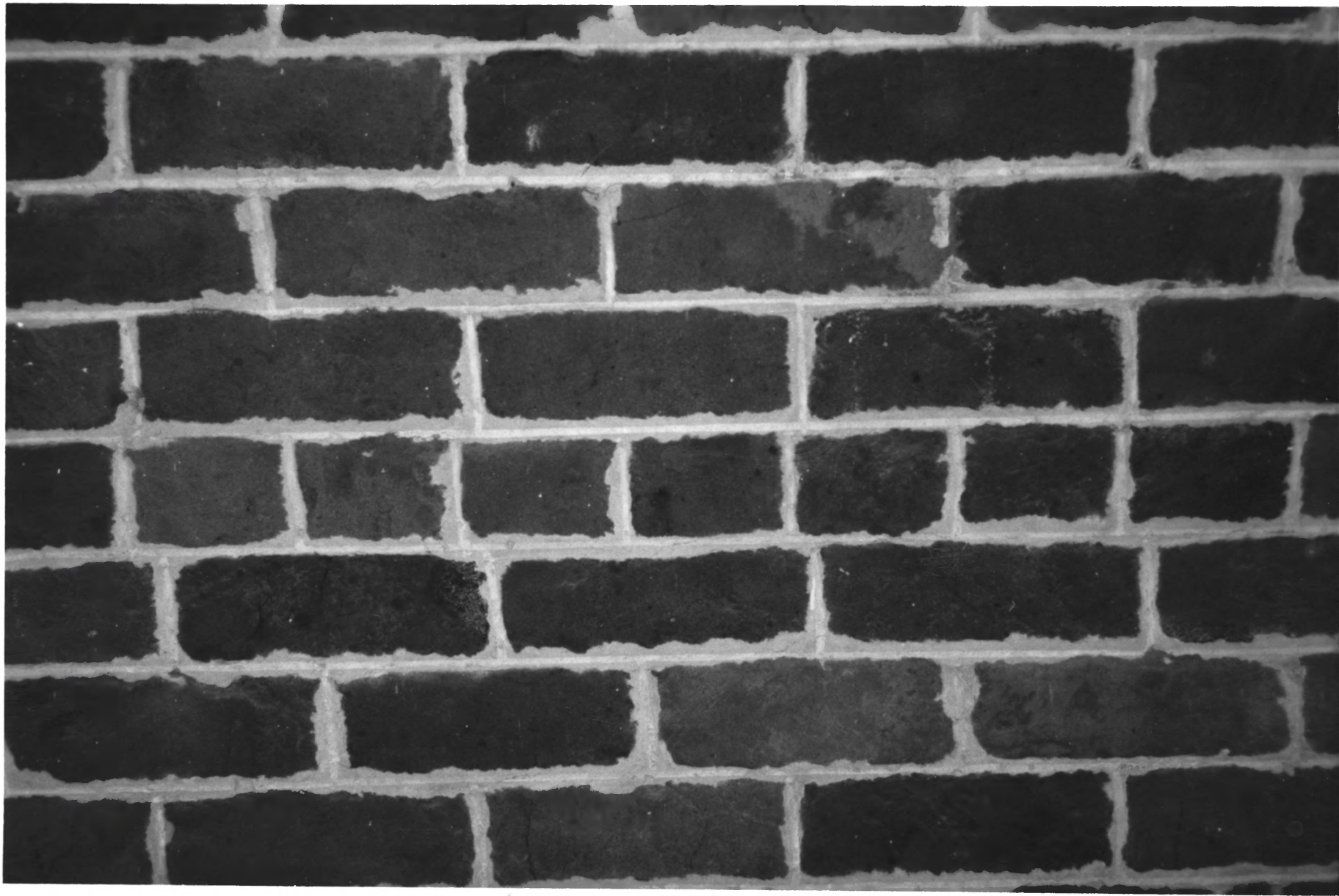
⑤

1. Idlewild
2. Talladega County, Alabama
3. Camille A Bowman
4. 2 Dec 92
5. Negatives: Alabama
Historical Commission
6. Exterior - facing NW
from kitchen wing



⑥

1. Idlewild
2. Talladega County Alabama
3. Camille A Bowman
4. 2 Dec 92
5. Negatives: Alabama
Historical Commission
6. Exterior - facing SE
toward kitchen/main
house connector



(17)

1. Idlewild
2. Talladega County, Alabama
3. Camille A Bowman
4. 2 Dec 92
5. Negatives: Alabama
Historical Commission
6. Exterior-facing S
Brickwork on old kitchen
Pencilled joints



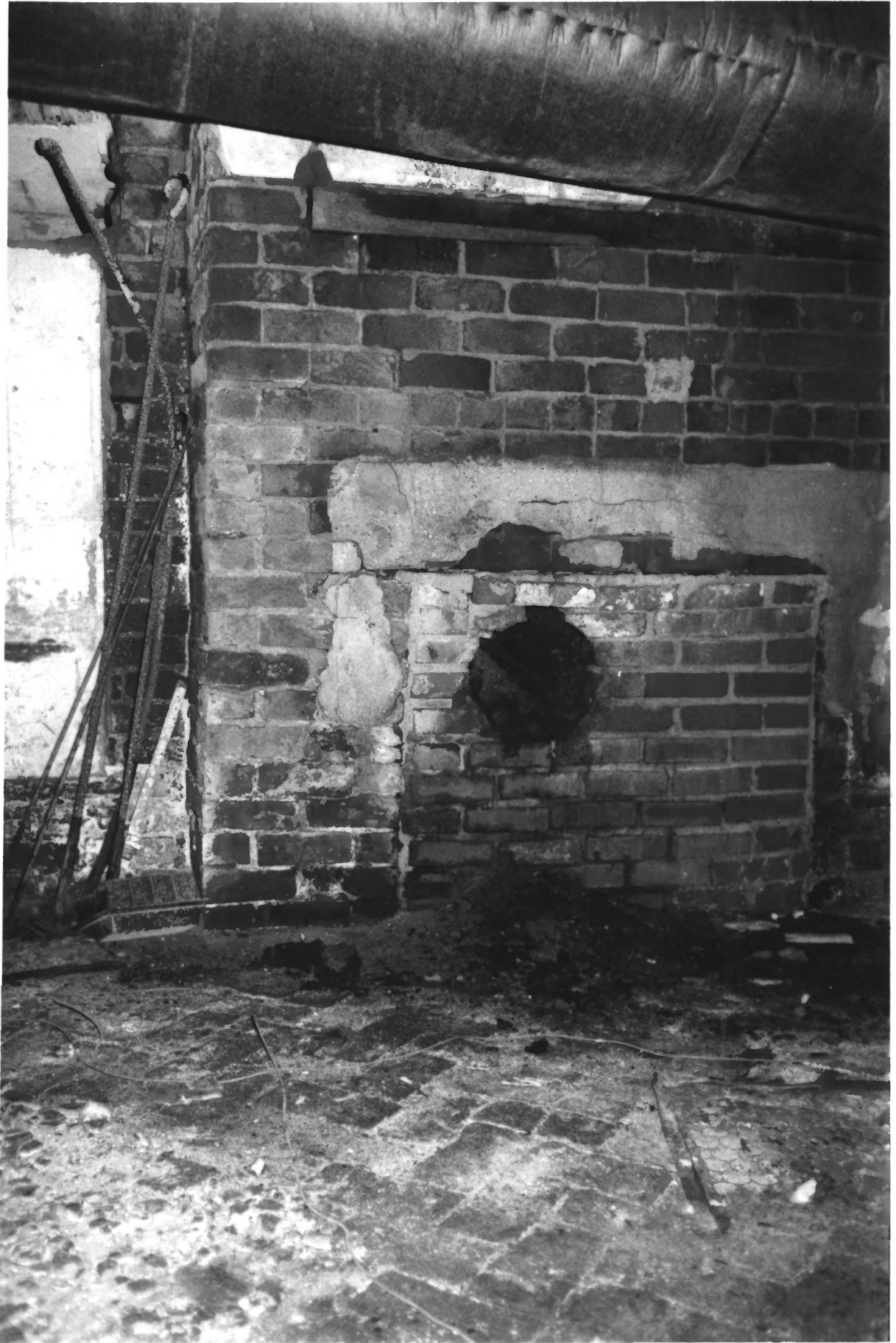
⑧

1. Idlewild
2. Talladega Co, AL
3. Camille A Bowman
4. 2 Dec 92
5. Negatives: Alabama
Historical Commission
6. Interior - facing E
Dining room mantel



9

1. Idlewild
2. Talladega Co AL
3. Camille A Bowman
4. 2 Dec 92
5. Negatives: Alabama Historical Commission
6. Interior facing N
Basement plaster and
molding ghost marks



(10)

1. Idlewild
2. Talladega County AL
3. Camille A Bowman
4. 2 Dec 92
5. Negatives: Alabama Historical Commission
6. Interior facing E
Basement fireplace



11

1. Idlewild
2. Talladega Co AL
3. Camille A Bowman
4. 2 Dec 92
5. Negatives - Alabama
Historical Commission.
6. Interior facing
Front doors



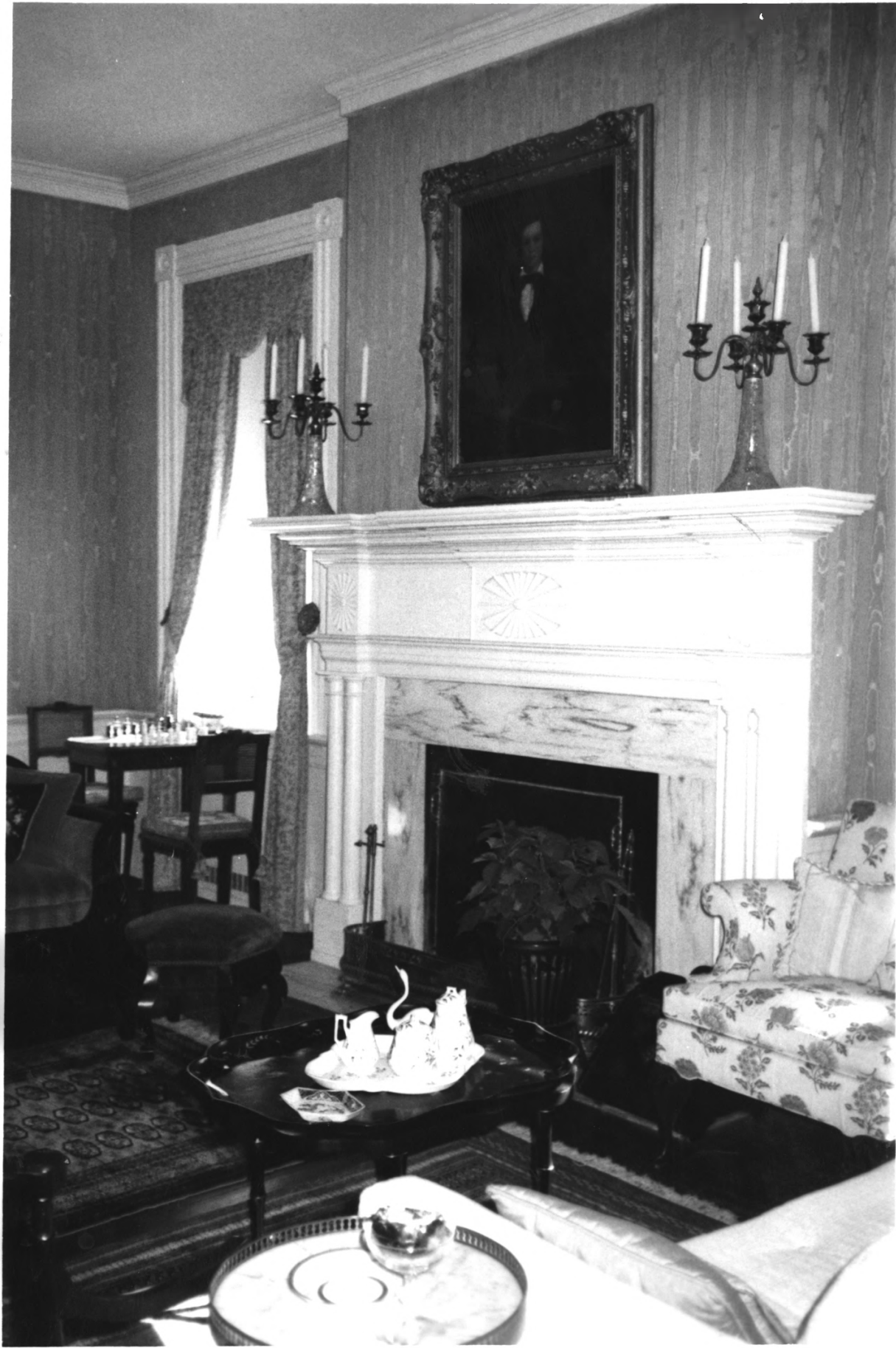
(12)

1. Idlewild
2. Talladega Co AL
3. Camille A Bowman
4. 2 Dec 92
5. Negatives: Alabama.
Historical Commission
6. Interior facing W
Central hall + stairway



13

1. Idlewild
2. Talladega County, AL
3. Camille A Bowman
4. 2 Dec 92
5. Negatives; Alabama
Historical Commission
6. Interior - facing S
Parlor mantel



(14)

1. Hewitt
2. Talladega County AL
3. Cornelia A Bowman
4. 2 Dec 92
5. Negatives: Alabama
Historical Commission
6. Interior - facing SE
Parlor mantel + window



⑤

1. Idlewild
2. Talladega Co AL
3. Camille A Bowman
4. 2 Dec 92
5. Negatives: Alabama
Historical Commission
6. Interior - facing N
Bedroom mantel



(16)

1. Idlewild
2. Talladega Co AL
3. Camille A Bowman
4. 2 Dec 92
5. Negatives. Alabama
Historical Commission
6. Interior - Facing N
Bedroom mantel



(17)

1. Idlewild
2. Talladega Co AL
3. Camille A Bowman
4. 2 Dec 92
5. ~~Negative~~: Alabama
Historical Commission
6. Interior facing SE
Bedroom - closet and
bath additions



(18)

1. Idlewild
2. Talladega Co AL
3. Camille A Bowman
4. 2 Dec 92
5. Negatives; Alabama
Historical Commission
6. Barn - facing N



①9

1. Idlewild
2. Talladega Co AL
3. Cornille A Bowman
4. 2 Dec 92
5. Negatives: Alabama
Historical Commission.
6. View facing W
from N side of barn



12 2'92

1. Blewild
2. Talladega Co AL
3. Carnille A Bowman
4. 2: Dec 92
5. Negatives; Alabama Historical Commission
6. View from barn facing NW



12 2 '92

(21)

1. Idlewild
2. Talladega Co AL
3. Camille A Bowman
4. 2 Dec 92
5. Negatives: Alabama
Historical Commission
6. Barn - sill +
Foundation



(22)

1. Idlewild
2. Talladega Co AL
3. Camille A Bowman
4. 2 Dec 92
5. Negatives: Alabama
Historical Commission
6. Barn framing
view facing S



(23)

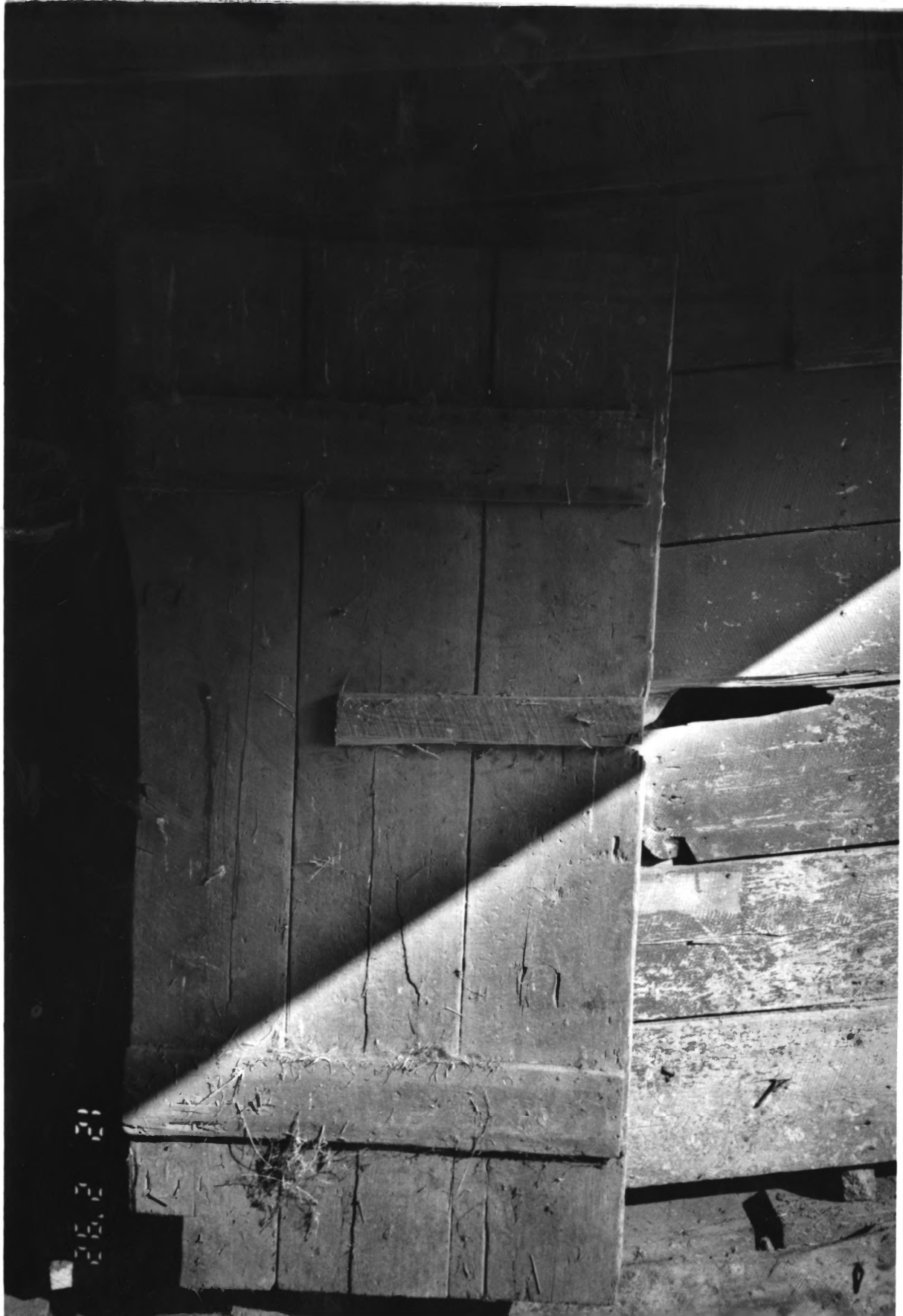
1. Idlewild
2. Talladega Co AL
3. Camille A Bowman
4. 2 Dec 92
5. Negatives: Alabama
Historical Commission
6. Barn framing



26.2 21 12 2'92

24

1. Idlewild
2. Talladega Co AL
3. Camille A Bowman
4. 2 Dec 92
5. Negatives: Alabama
Historical Commission
6. Barn framing



25

1. Idlewild
2. Talladega Co AL
3. Camille A Bowman
4. 2 Dec 92
5. Negatives: Alabama
Historical Commission
6. Barn - board +
batten door



(26)

1. Idlewild
2. Talladega Co AL
3. Camille A Bowman
4. 2 Dec 92
5. Negatives: Alabama
Historical Commission
6. Exterior view facing W
Herb garden + Smokehouse



27

- ① IDLEWILD - old photograph
- ② Talladega County, AL
- ③ View facing West
- ④ Photographer unknown
- ⑤ Original owned by
Mr. + Mrs. W.B. McGehee