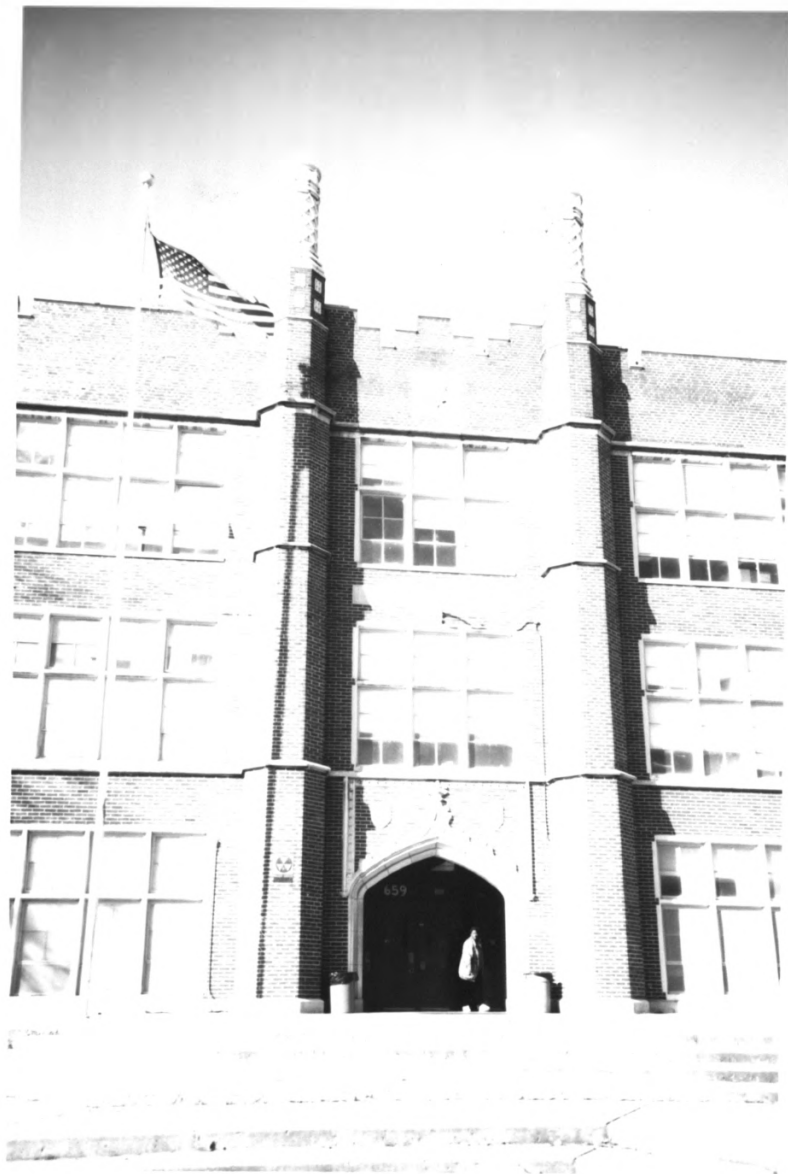


1



HUMES L. C. HIGH SCHOOL
SHELBY CO. TENNESSEE 1870



②

HUMES, L.C. HIGH SCHOOL
SHELBY COUNTY, TN Z 6FZ6



HUMES, L.C. HIGH SCHOOL
SHELBY CO. TN 3 OF 20

HUMES, L.C. HIGH SCHOOL
SHELBY CO., TN 4 of 26



HUMES L. C. HIGH SCHOOL
SHELBY CO. TN 5 OF 26





Humes, U.C. HIGH SCHOOL
SHELBY CO, TN 60F26



HUMES, L C HIGH SCHOOL
SHEPHERD CO. IN ILLINOIS



HUMES, L. C. HIGH SCHOOL
SHELBY CO. TN 80F 260



HUMES L.C. HIGH SCHOOL
SHELBY CO., TN 9 OF 20



HUMES L.C. HIGH SCHOOL
SHELBY CO. TN. 10 OF 20



HUMES, L.C. HIGH SCHOOL
SHELBY CO. TN. 11 OF 26



HUMES, L.C. HIGH SCHOOL
SHELBY CO., TN. 12 OF 26



HUMES, L.C. HIGH SCHOOL
SHELBY CO., TN 13 OF 26



HUMES, L. C. HIGH SCHOOL
SHELBY CO., TN 14 OF 26



KYNNES, L.O. FIGH SCHOOL
SHELBY CO., TN

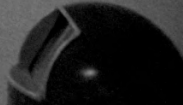


KIMES, L. O. KIBER ED MOOL
SLUBBY, S. O. KIBER



STUDENTS;
PROSPERITY
ARE IN
YOUR
HANDS
USE THEM

EXIT



ANNES, L. O. RIGBY SCHOOL
STEELE, CO., WY.



APR 29, C. D. HIGH SCHOOL
SHELBY CO., TN



MUNICIPAL, L.O. HIGH SCHOOL
CHICAGO, ILL.



KUMES, L. C. HIGH SCHOOL
SHREVEPORT, LA



ZOOLOGICAL CHART

1. Kingdom Animalia

2. Phylum Chordata

3. Class Mammalia

4. Order Carnivora

5. Family Felidae

6. Genus Felis

7. Species Felis catus

8. Kingdom Plantae

9. Phylum Angiosperms

10. Class Dicotyledons

11. Order Rosales

12. Family Rosaceae

13. Genus Rosa

14. Species Rosa rugosa

15. Kingdom Fungi

16. Phylum Ascomycota

17. Class Ascomycetes

18. Order Sordariomycetes

19. Family Sordariaceae

20. Genus Sordaria

21. Species Sordaria macrospora

22. Kingdom Protista

23. Phylum Rhizaria

24. Class Cercozoa

25. Order Cercozoales

26. Family Cercozoaceae

27. Genus Cercozoa

28. Species Cercozoa sp.

29. Kingdom Bacteria

30. Phylum Firmicutes

31. Class Bacilli

32. Order Bacillales

33. Family Bacillaceae

34. Genus Bacillus

35. Species Bacillus subtilis

36. Kingdom Eukarya

37. Phylum Opisthokonta

38. Class Eukaryotes

39. Order Eukaryotes

40. Family Eukaryotes

41. Genus Eukaryotes

42. Species Eukaryotes

Handwritten text in a cursive script, possibly a signature or a name, written in dark ink on a light background. The text is arranged in two lines. The top line contains approximately 12 characters, and the bottom line contains approximately 10 characters. The characters are highly stylized and difficult to decipher.





JAMES L. O. HAZARD
COLE CO., NEW YORK 1900



HUNTER, L. C. HIGH SCHOOL
SHELBY CO., TN 37002



ELVIS A. PRESLEY

401155, L.C. NIGHT SPINER
C. R. LBY CO., TN

PROCEEDS B. D. 1894

BOARD OF
EDUCATION

L. C. HUMES
PRESIDENT

M. C. KETCHUM

W. J. PRESCOTT

Mrs. WALTER L. GRAY

Mrs. JOSEPH D. BROWN

R. L. JONES

SUPT. OF SCHOOLS

CHARLES O. PFEIL

GEORGE AWSUMB

ARCHITECTS

B. E. BUFFALO & Co

CONTRACTORS

JUNES, L.O. 1934 50 PAGES
JULY, L.O. 1934 50 PAGES