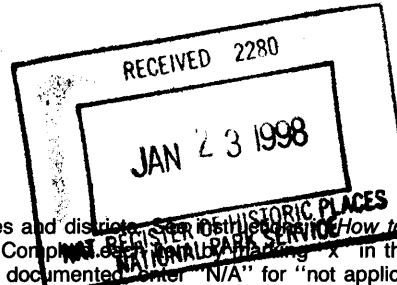


United States Department of the Interior
National Park Service

National Register of Historic Places
Registration Form



119

This form is for use in nominating or requesting determinations for individual properties and districts... *How to Complete the National Register of Historic Places Registration Form (National Register Bulletin 16A).* Complete each item in the appropriate box or by entering the information requested. If an item does not apply to the property being documented, enter "N/A" for "not applicable." For functions, architectural classification, materials, and areas of significance, enter only categories and subcategories from the instructions. Place additional entries and narrative items on continuation sheets (NPS Form 10-900a). Use a typewriter, word processor, or computer, to complete all items.

1. Name of Property

historic name Bogard Hall, Louisiana Tech University

other names/site number _____

2. Location

street & number Corner Arizona & College, Louisiana Tech University N/A not for publication

city or town Ruston N/A vicinity

state Louisiana code LA county Lincoln code 061 zip code 71272

3. State/Federal Agency Certification

As the designated authority under the National Historic Preservation Act, as amended, I hereby certify that this nomination request for determination of eligibility meets the documentation standards for registering properties in the National Register of Historic Places and meets the procedural and professional requirements set forth in 36 CFR Part 60. In my opinion, the property meets does not meet the National Register criteria. I recommend that this property be considered significant nationally statewide locally. (See continuation sheet for additional comments.)

Jon Fricker 1/14/98
Signature of certifying official/Title Jonathan Fricker Date
Deputy SHPO, Dept of Culture, Recreation and Tourism
State of Federal agency and bureau

In my opinion, the property meets does not meet the National Register criteria. (See continuation sheet for additional comments.)

Signature of commenting official/Title _____ Date _____
State or Federal agency and bureau _____

4. National Park Service Certification

I hereby certify that the property is:

- entered in the National Register.
 See continuation sheet.
- determined eligible for the National Register
 See continuation sheet.
- determined not eligible for the National Register.
- removed from the National Register.
- other, (explain:)

Edson H. Beall
Signature of the Keeper

Date of Action 2/20/98

Bogard Hall
Name of Property

Lincoln Parish, LA
County and State

5. Classification

Ownership of Property
(Check as many boxes as apply)

- private
- public-local
- public-State
- public-Federal

Category of Property
(Check only one box)

- building(s)
- district
- site
- structure
- object

Number of Resources within Property
(Do not include previously listed resources in the count.)

Contributing	Noncontributing	
1		buildings
		sites
		structures
		objects
1	0	Total

Name of related multiple property listing
(Enter "N/A" if property is not part of a multiple property listing.)
"The 1930's Building Boom at Louisiana Tech University"

Number of contributing resources previously listed in the National Register
0

6. Function or Use

Historic Functions
(Enter categories from instructions)

Education / college

Current Functions
(Enter categories from instructions)

Education / college

7. Description

Architectural Classification
(Enter categories from instructions)

Colonial Revival

Materials
(Enter categories from instructions)

foundation concrete

walls brick

roof asphalt

other concrete

Narrative Description

(Describe the historic and current condition of the property on one or more continuation sheets.)

United States Department of the Interior
National Park Service

National Register of Historic Places Continuation Sheet

Bogard Hall, Louisiana Tech University, Lincoln Parish, LA
Section number 7 Page 1

Bogard Hall (1939) is a two story brick collegiate building in the Colonial Revival style. The large, sprawling building occupies an entire block near the main quad on the campus of Louisiana Tech University. Alterations have been minimal.

Bogard Hall takes its architectural cue from large Colonial era public buildings such as the dorms at Harvard and the College of William and Mary. The building consists of a five-part Colonial style front section with an enormous functional rear wing under a flat roof (see 1941 aerial view). This design shows the limitations inherent in the practice of adapting historical forms for modern buildings. The rear wing was needed because the Colonial shaped front section could not fully accommodate the functional needs of the engineering facility.

The Colonial style front section consists of a main block, a pair of large hyphen wings, and large side wings set at right angles to the facade of the main block. All of this is contained under a system of hip roofs pierced in certain places by ventilating dormers. Each of the side wings has its own facade facing a side street. The building rests on a half raised basement which at some points becomes a full story as the ground falls away.

The Greek Revival looking main entrance features four Roman Doric pilasters rising to a heavy entablature. It contains a double door with a transom and side lights and a pair of decorative recessed panels. This Greek Revival look is repeated in the entrances to the side wings. Here a single aedicule motif is surmounted by a strong pediment. It is also repeated in the rooftop cupola which consists of heavy aedicule motifs with concave sections between.

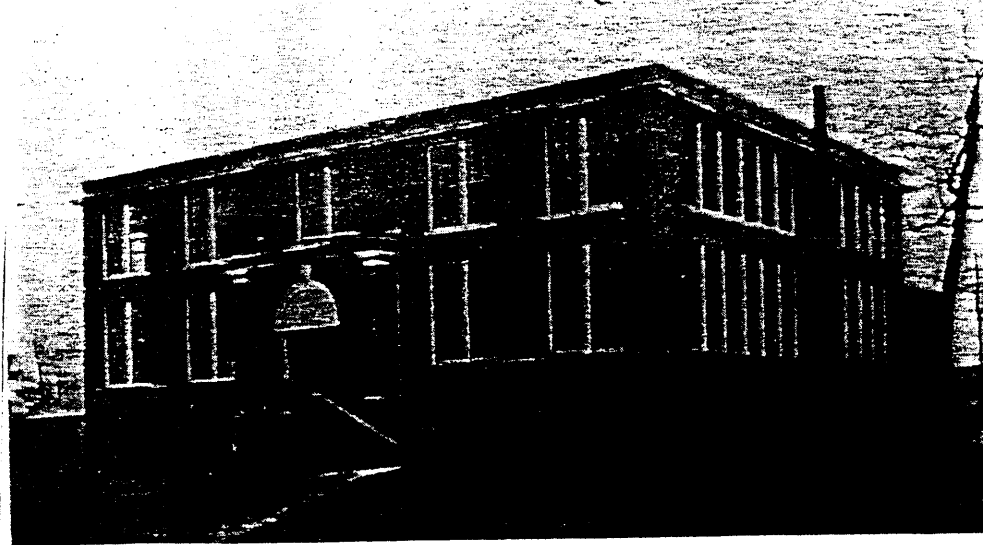
No doubt these Greek Revival looking features would have been accepted as "Colonial" by the people at the time. More convincing Colonial style features include jack arches over the windows with cast concrete keystones and the use of Flemish bond (looking) brickwork. The brick color varies in several shades from red to brown to create a textured effect similar to that produced by burned headers in real Colonial brick buildings. One very un-Colonial feature is the placing of many of the nine over nine windows in pairs.

Other noteworthy features include the pair of lamp standards at the main entrance which feature Modernistic stylized forms at their base and the Modernistic chandelier that lights the modest lobby. The interiors are in a fairly good state of integrity but, being functional, are of little architectural note. The only major interior alteration has been the lowering of the ceilings. The only exterior alteration has been a small brick extension at one point on the sprawling rear section. These alterations, of course, are minor. There is no doubt that Bogard Hall would be easily recognizable to someone from the historic period.

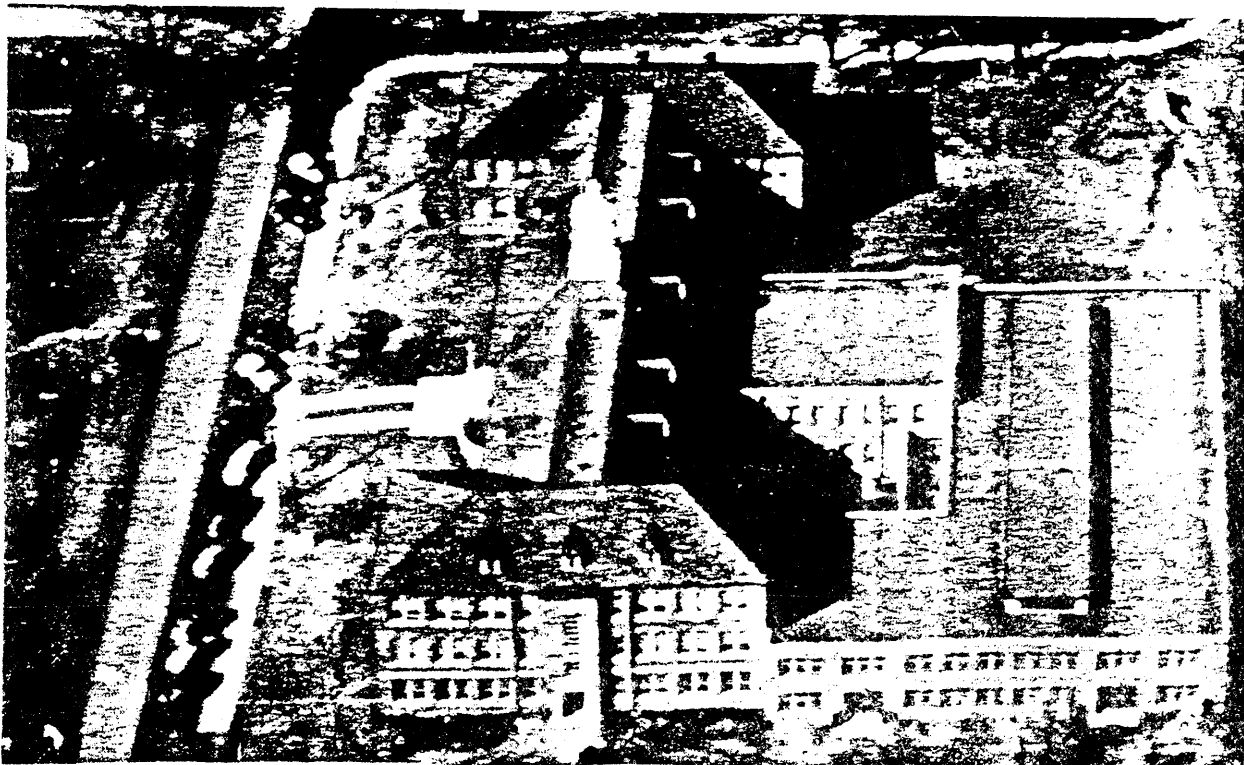
United States Department of the Interior
National Park Service

National Register of Historic Places Continuation Sheet

Bogard Hall, Louisiana Tech University, Lincoln Parish, LA
Section number 7 Page 2



Old Engineering Building - Constructed 1905



8. Statement of Significance

Applicable National Register Criteria

(Mark "x" in one or more boxes for the criteria qualifying the property for National Register listing.)

- A** Property is associated with events that have made a significant contribution to the broad patterns of our history.
- B** Property is associated with the lives of persons significant in our past.
- C** Property embodies the distinctive characteristics of a type, period, or method of construction or represents the work of a master, or possesses high artistic values, or represents a significant and distinguishable entity whose components lack individual distinction.
- D** Property has yielded, or is likely to yield, information important in prehistory or history.

Criteria Considerations N/A
(Mark "x" in all the boxes that apply.)

Property is:

- A** owned by a religious institution or used for religious purposes.
- B** removed from its original location.
- C** a birthplace or grave.
- D** a cemetery.
- E** a reconstructed building, object, or structure.
- F** a commemorative property.
- G** less than 50 years of age or achieved significance within the past 50 years.

Narrative Statement of Significance

(Explain the significance of the property on one or more continuation sheets.)

9. Major Bibliographical References

Bibliography

(Cite the books, articles, and other sources used in preparing this form on one or more continuation sheets.)

Previous documentation on file (NPS): N/A

- preliminary determination of individual listing (36 CFR 67) has been requested
- previously listed in the National Register
- previously determined eligible by the National Register
- designated a National Historic Landmark
- recorded by Historic American Buildings Survey # _____
- recorded by Historic American Engineering Record # _____

Areas of Significance

(Enter categories from instructions)

education

Period of Significance

1939

Significant Dates

1939

Significant Person

(Complete if Criterion B is marked above)

N/A

Cultural Affiliation

N/A

Architect/Builder

Neild, Somdal & Neild (Architects)

T.L. James, Contractor

Primary location of additional data:

- State Historic Preservation Office
- Other State agency
- Federal agency
- Local government
- University
- Other

Name of repository:

**United States Department of the Interior
National Park Service**

**National Register of Historic Places
Continuation Sheet**

Bogard Hall, Louisiana Tech University, Lincoln Parish, LA

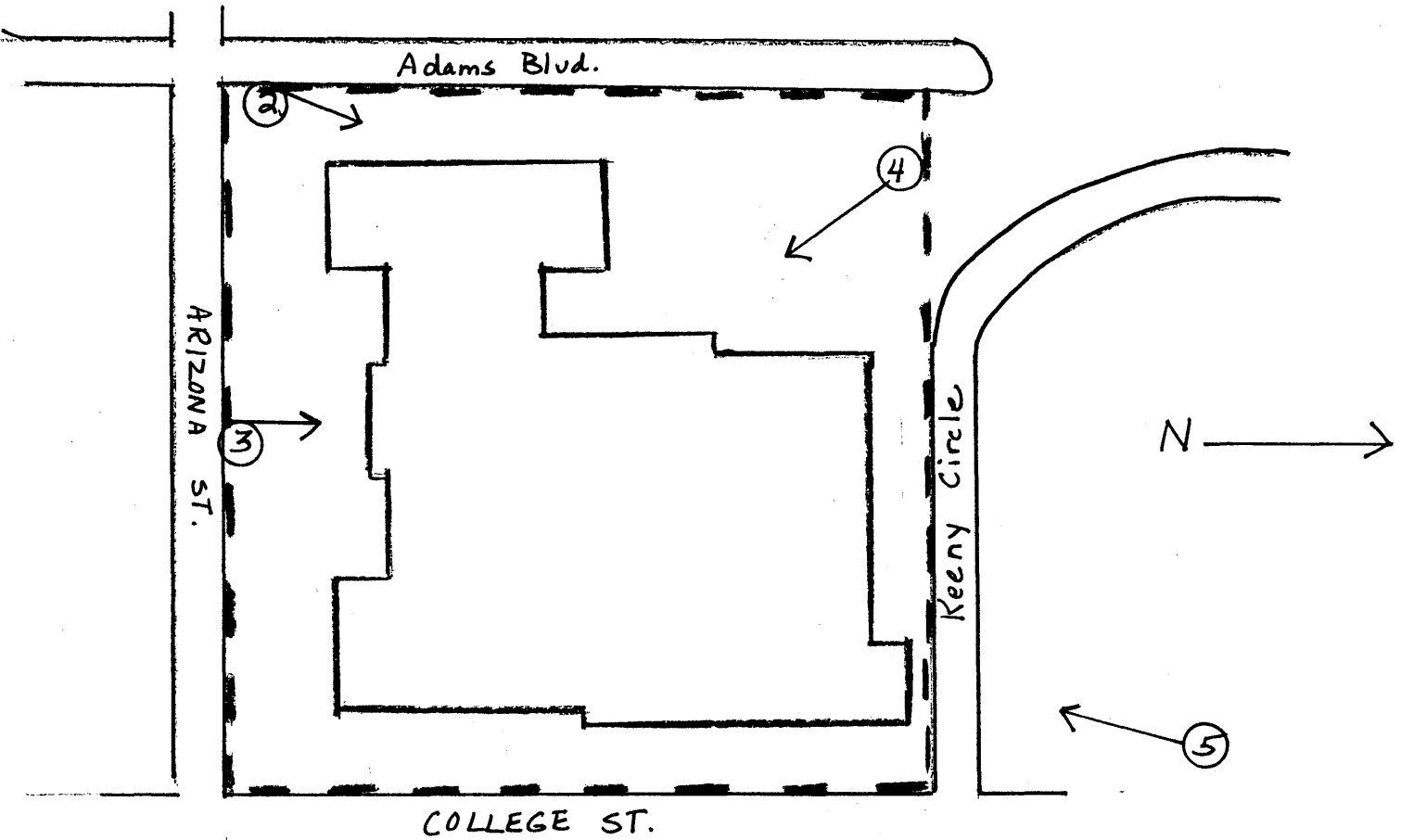
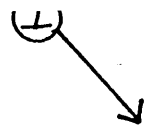
Section number 8, 9, 10 Page 1

Bogard Hall is of local significance in the area of education because it is an important component of a critical chapter in Louisiana Tech's history, the great construction boom of the 1930s which increased the physical plant by one-third, including numerous major buildings such as Bogard. See the multiple property cover form "The 1930s Building Boom at Louisiana Tech" for a fuller statement of significance. As noted in the form, the importance of Bogard Hall's construction can be seen by comparing this huge facility with its predecessor, the 1905 Mechanical Arts Building (see photo). The campus newspaper in 1937 observed: "One of the new structures, generally believed to be the most urgent need, is an engineering building to replace the present building . . ." When the Mechanical Arts Building was erected in 1905, there were less than 1,000 students enrolled at Tech (837 in 1904). By 1939-40, as Bogard Hall was being built to replace the old building, the student body numbered 2,234. And, of course, it was only fitting that the school's widely respected engineering program be housed in a large facility outfitted with the latest equipment. The cost of Bogard Hall was \$546,592, a little over one-fourth of a two million dollar building program in the late 1930s financed with federal relief funds. It was named for School of Engineering Dean Frank Bogard, who died in August 1937.

Bibliography: See multiple property cover form bibliography.

Boundary Description: See attached sketch map.

Justification: As shown, boundaries follow the curblines of the block on which the building is located.



Bogard Hall
Louisiana Tech University
Lincoln Parish, LA

1" = 100'

--- BOUNDARY