

United States Department of the Interior
National Park Service

National Register of Historic Places Continuation Sheet

Name of Property

County and State

Name of multiple property listing (if applicable)

Section number _____ Page _____

SUPPLEMENTARY LISTING RECORD

NRIS Reference Number: 100001821

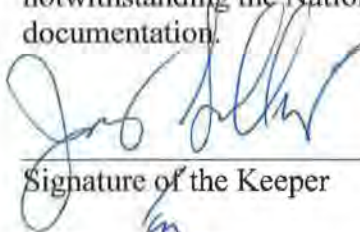
Date Listed: 11/14/2017

Property Name: Leach Fire Lookout Tower (Tennessee Division of Forestry Lookout Towers,
1933-1975 MPS)

County: Carroll

State: TN

This property is listed in the National Register of Historic Places in accordance with the attached nomination documentation subject to the following exceptions, exclusions, or amendments, notwithstanding the National Park Service certification included in the nomination documentation.



Signature of the Keeper

11-14-2017

Date of Action

Amended Items in Nomination:

Section 3 and 8: Level of Significance

The Level of Significance is hereby amended to LOCAL. The program had a statewide impact, but the importance of this tower is local.

Section 5: Category of Property and Resource Count

The category of this property is hereby changed to STRUCTURE. The primary resource is the fire lookout tower itself, as defined by the registration requirements of the MPS.

The number of contributing resources is hereby changes to reflect 3 Contributing Buildings and 1 Contributing Structure, to account for the fire tower itself.

The Tennessee State Historic Preservation Office was notified of this amendment.

DISTRIBUTION:

- National Register property file**
- Nominating Authority (without nomination attachment)**

MP-1821

United States Department of the Interior
National Park Service



National Register of Historic Places Registration Form

This form is for use in nominating or requesting determinations for individual properties and districts. See instructions in National Register Bulletin, *How to Complete the National Register of Historic Places Registration Form*. If any item does not apply to the property being documented, enter "N/A" for "not applicable." For functions, architectural classification, materials, and areas of significance, enter only categories and subcategories from the instructions.

1. Name of Property

Historic name Leach Fire Lookout Tower
Other names/site number N/A
Name of related multiple property listing Tennessee Division of Forestry Fire Lookout Towers, 1933-1975
(Enter "N/A" if property is not part of a multiple property listing)

2. Location

Street & Number: RT 1 Leach Road
City or town: Cedar Grove State: Tennessee County: Carroll
Not For Publication: n/a Vicinity: n/a Zip: 38321

3. State/Federal Agency Certification

As the designated authority under the National Historic Preservation Act, as amended,
I hereby certify that this nomination request for determination of eligibility meets the documentation standards for registering properties in the National Register of Historic Places and meets the procedural and professional requirements set forth in 36 CFR Part 60.

In my opinion, the property meets does not meet the National Register Criteria. I recommend that this property be considered significant at the following level(s) of significance:
 national statewide local

Applicable National Register Criteria: A B C D

Claudia J. Steyer 9/10/17
Signature of certifying official/Title: Deputy State Historic Preservation Officer, Tennessee Historical Commission Date
State or Federal agency/bureau or Tribal Government

In my opinion, the property meets does not meet the National Register criteria.
Signature of Commenting Official: _____ Date _____
Title: _____ State of Federal agency/bureau or Tribal Government

Leach Fire Lookout Tower
 Name of Property

Carroll County, Tennessee
 County and State

4. National Park Service Certification

I hereby certify that this property is:

- entered in the National Register
- determined eligible for the National Register
- determined not eligible for the National Register
- removed from the National Register
- other (explain: _____)

[Handwritten Signature]
 Signature of the Keeper
 For

11-14-2017
 Date of Action

5. Classification

Ownership of Property

(Check as many boxes as apply.)

- Private
- Public – Local
- Public – State
- Public – Federal

Category of Property

(Check only **one** box.)

- Building(s)
- District
- Site
- Structure
- Object

Number of Resources within Property

(Do not include previously listed resources in the count)

Contributing	Noncontributing	
4	2	buildings
0	0	sites
0	1	structures
0	0	objects
4	3	Total

Number of contributing resources previously listed in the National Register 0

Leach Fire Lookout Tower
Name of Property

Carroll County, Tennessee
County and State

6. Function or Use

Historic Functions

(Enter categories from instructions)

OTHER/Fire Lookout

Current Functions

(Enter categories from instructions)

OTHER/Fire Lookout (emergency)

7. Description

Architectural Classification

(Enter categories from instructions.)

OTHER/Standard Plan Aermotor LS-40

Materials: (enter categories from instructions.)

Principal exterior materials of the property: CONCRETE; METAL: Steel; WOOD; GLASS

Narrative Description

Located in the unincorporated community of Cedar Grove (2007 population 2,677), Carroll County in West Tennessee, the Leach Fire Lookout Tower is an eighty-foot, bolted, truss frame, steel structure constructed in 1957 by an unknown entity (City-Data). The tower provided a high, sheltered location for fire observation through its square cab featuring a band of windows that provide a 360-degree panoramic view of the surrounding terrain. The nominated property is situated within a clearing surrounded by mature forests on the east side of Leach Road (*see photo 1*). The Leach Fire Lookout Tower has not been significantly altered since its date of construction in 1957. As a result, the property retains a high level of historic integrity. The nominated property includes four contributing buildings, two non-contributing buildings, and one non-contributing structure.

Leach Fire Lookout Tower, 1957 (Contributing Building)

The Leach Fire Lookout Tower was constructed in 1957 by an unknown entity (Kirksey 2014). Situated at an elevation of 627 feet, the tower is constructed of galvanized steel members with bolted connections (*see photos 2 through 4*). The four-sided, truss frame tower is eighty feet in height and topped by an enclosed seven-foot by seven-foot square cab (Kirksey 2014). At its base, the tower measures eighteen feet ten inches

Leach Fire Lookout Tower
Name of Property

Carroll County, Tennessee
County and State

by eighteen feet ten inches. The structure is supported by four legs secured to concrete footers, each measuring two feet by two feet (*see photo 9*). The steel used for the structure bears the markings of the United States Steel Corporation (*see photo 10*). A square discoloration on the northwest leg is likely the former location of a steel manufacture plate indicating that the tower was designed by the Aerometer Company of Chicago, Illinois (*see photo 11*). The tower appears to be an Aermotor LS-40 type.

Steel X-bracing is affixed to the structural frame at each of the tower's six levels (*see photo 7*), spanning the distance between every level of the tower with diagonal support members on each face. Additional steel bracing is installed at the juncture of each level of the tower. Oriented on a horizontal plane, the bracing extends from each of the staircase's eleven landings to the opposing section of the tower, thereby forming a rectangular figure. The structure tapers in width from the base to its apex, a square-plan observation room (*see photo 5*).

Access to the observation room is achieved via a series of twelve steel staircases each with eight wood plank treads. Each stairway terminates at a landing comprised of wood planks (*see photo 8*). The observation room is steel-framed, clad with metal sheeting, and topped with a hipped metal roof (*see photo 6*). Two nine-light, operable, metal sash windows (*see photo 16*) on each elevation provide a 360-degree panoramic view of the surrounding terrain (*see photo 14*). The interior of the observation room contains its original fire-finding alidade (*see photo 12*) and is accessed through a small, rectangular hatch door with metal hinges (*see photo 15*). The interior walls are faced with wood paneling from the floor to the waist-height window sills, and the floor is composed of narrow wood slats (*see photo 13*).

Utility Building, ca. 1957 (Contributing Building)

Situated approximately ninety feet north of the Leach Fire Lookout Tower is a ca. 1957 utility building, which currently functions as a garage and workshop space (*see photos 30 and 31*). The forty-three feet by twenty feet, one-story, frame building sits on a concrete block foundation, is clad with vinyl siding, features an interior concrete block chimney, and is topped by a gable roof covered with asphalt shingles. An overhead bay door on the west elevation provides vehicular access to the building. A door situated on the south elevation provides pedestrian access, and is protected by a gabled awning. The west elevation is marked by an exterior, centrally-placed, concrete block chimney. The chimney is flanked to the south by a two-light, metal sash sliding window. The north elevation is marked by four one-over-one, double-hung metal sash windows. This sash type is repeated in four windows on the south elevation.

Crew House, ca. 1957 (Contributing Building)

Situated approximately twenty feet west of the Leach Fire Lookout Tower is a ca. 1957 crew house that functions as office space for forestry employees (*see photo 17*). The twenty-five feet by thirty-five feet, one-story, rectangular plan, frame building sits on a north-south axis and features a west-facing façade. The building features a concrete block foundation, an exterior clad with vinyl siding, an interior concrete block and brick chimney, and a side-gabled roof covered with asphalt shingles. The façade is marked by a partial-width covered porch, with four evenly-spaced modern ornamental iron supports atop a concrete floor. Within the porch, a centered, a six-light, paneled wood entry door is flanked to the south by a single six-over-six, double-hung wood sash window and a pair of similar windows to the north of the door. One additional six-over-six, double-hung, wood sash window is located on the west façade north of the porch. This sash type is repeated in two windows on the south elevation, three windows on the east elevation, and two windows on

Leach Fire Lookout Tower
Name of Property

Carroll County, Tennessee
County and State

the north elevation. Centered at the crest of the gables are louvered vents for the attic. A vinyl door on the north end of the east elevation provides access to the rear of the building (*see photo 18*).

The crew house consists of six rooms including a main room used as office space and a reception area (*see photo 26*), two offices (*see photos 21 through 23*), a bathroom (*see photo 20*), a kitchen (*see photos 24 and 25*), a storage room, and a central hallway (*see photo 19*). All walls are faced with wood paneling, and a mixture of hardwood flooring and linoleum tile is used throughout the building (*see photos 27 and 28*). The ceilings consist of drywall tiles (*see photo 29*).

Lookout Operator's Cabin, ca. 1957 (Contributing Building)

Situated approximately fifteen feet southeast of the Leach Fire Lookout Tower is the former Lookout Operator's Cabin, which was constructed in 1957 and is currently used as storage (*see photo 32*). The original building has been modified with a modern addition on its east elevation. The one-story, twenty-foot by ten-foot frame building sits on concrete block piers, is clad with vertical tongue-and-groove siding, and is capped by a gable roof covered with standing seam metal. The building's eaves reveal extended rafters. A single door on the west elevation provides access to the building. Entry is facilitated by a large, concrete slab in front of the door. Additional fenestration is limited to a single one-over-one, double-hung metal sash window on the east elevation (*see photo 33*).

Storage Sheds, ca. 1980 (Non-Contributing Buildings)

Situated approximately 120 feet northeast of the Leach Fire Lookout Tower are two ca. 1980 storage sheds (*see photos 34 and 35*). Both frame sheds are aligned on east-west axis, sit on a concrete foundation, have an exterior clad with vertical wood siding, and a shed roof covered with standing seam metal. The buildings' eaves reveal extended rafters. A pair of wood doors on each building's west elevation provides access. The southernmost building measures eleven feet by sixteen feet, and the northernmost measures eleven feet by twenty feet.

Radio Tower, ca. 2012 (Non-Contributing Structure)

Approximately 165 feet north of the Leach Fire Lookout Tower, and located within a chain-link fence topped with barbed wire, is a modern radio tower under license to the State of Tennessee, Forestry Radio Division to broadcast public safety information to its subscribers (*see photos 36 and 37*). The cantilevered structure is constructed of steel, and features a lattice of triangular cross-sections. The tower tapers in height from base to apex.

Leach Fire Lookout Tower
 Name of Property

Carroll County, Tennessee
 County and State

8. Statement of Significance

Applicable National Register Criteria
 (Mark "x" in one or more boxes for the criteria qualifying the property for National Register listing.)

Areas of Significance
 (Enter categories from instructions.)

ENGINEERING
 CONSERVATION

- A Property is associated with events that have made a significant contribution to the broad patterns of our history.
- B Property is associated with the lives of persons significant in our past.
- C Property embodies the distinctive characteristics of a type, period, or method of construction or represents the work of a master, or possesses high artistic values, or represents a significant and distinguishable entity whose components lack individual distinction.
- D Property has yielded, or is likely to yield, information important in prehistory or history.

Period of Significance
 1957-1967

Significant Dates
 1957

Significant Person
 (Complete only if Criterion B is marked above.)

N/A

Criteria Considerations N/A
 (Mark "x" in all the boxes that apply.)

Property is:

Cultural Affiliation
 N/A

Architect/Builder
 Unknown

- A Owned by a religious institution or used for religious purposes.
- B removed from its original location.
- C a birthplace or grave.
- D a cemetery.
- E a reconstructed building, object, or structure.
- F a commemorative property.
- G less than 50 years old or achieving significance within the past 50 years.

Leach Fire Lookout Tower
Name of Property

Carroll County, Tennessee
County and State

Statement of Significance Summary Paragraph

The Leach Fire Lookout Tower is eligible for listing in the National Register of Historic Places (NRHP) as part of the *Tennessee Division of Forestry Fire Lookout Towers, 1933-1975* Multiple Property Documentation Form (MPDF) under National Register Criterion A in the area of Conservation as a reflection of changing conceptions regarding forest management and fire control in the twentieth century. Additionally, the tower is eligible for the NRHP under National Register Criterion C in the area of Engineering as a good example of an Aermotor LS-40 fire lookout tower. The tower retains its original design features, and its historic setting has been largely preserved. The tower was constructed as part of the Tennessee Division of Forestry's (TDF) statewide efforts to protect forested land in the state through its fire control program. The period of significance begins in 1957, when the tower was constructed, and terminates in 1967, when the historic use of the property for fire detection ended.

Narrative Statement of Significance

Located in Carroll County, Tennessee, the Leach Fire Lookout Tower was constructed in 1957 by an unknown entity. While very little historical information is available regarding the Leach Fire Lookout Tower, it is known that the State of Tennessee Division of Forestry entered into a contract with the Guy Lawrence, Pauline Haywood, and Gladys Ainsworth on November 23, 1956, which allowed the construction, use, and maintenance of a fire lookout tower on the property. The contract allowed the State to use the property for fire detection and gave the State the right of ingress and egress. In the event of the State's abandonment of the property, the land title will revert to its original owners, and all structures and appurtenances will remain the property of the State (Carroll County Register of Deeds Deed Book 107: 578).

The lookout tower is significant under National Register Criterion A in the area of Conservation as a reflection of changing conceptions regarding forest management and fire control in the twentieth century. Tennessee, along with many other states, benefited from the early shift in public policy allowing for improvement in fire detection as a result of the conservation movement that led to the construction and staffing of fire towers. In the United States Forest Service's Southern Region (Region 8), and particularly in the State of Tennessee, with large areas of difficult-to-access mountain terrain and thick forest canopy, fire towers have served as a particularly important fire management tool. At its peak, the state had 208 lookout towers of which 142 were extant as of March 26, 2014 (University of Tennessee-Knoxville 2014). The lookout tower is a prominent symbol of the history of fire management and a key component of the conservation movement in the mid-20th century. From its establishment, the Forest Service played a significant role in shaping national fire control policies as well as in the development of state level fire prevention systems. The Leach Fire Lookout Tower is a visual reminder of this multi-agency, federal and state-level governmental cooperation for the benefit of forest land in Tennessee.

The Leach Fire Lookout Tower is significant under National Register Criterion C in the area of Engineering as an excellent example of an Aermotor LS-40 observation-only fire lookout tower. The LS-40 design was one of the most popular steel designs by the Aermotor Company of Chicago, Illinois (Forest Fire Lookout Association; Starr). Aermotor Company was the premier manufacturer of steel fire towers in the early twentieth century. The tower design was based on standardized plans adapted from Aermotor windmills (Steere 1987, *see figure 1*). The company re-tooled their existing designs into fire lookout towers, which were typically topped with a small, seven-foot by seven-foot square cab (Grosvenor 1999:96).

Leach Fire Lookout Tower
Name of Property

Carroll County, Tennessee
County and State

The LS-40 was available in a number of heights, ranging from twenty-two feet to as tall as 100 feet. The LS-40 is characterized by a seven-foot by seven-foot steel cab (*see figure 2*), and an internal stairway that runs back and forth between two elevations of the tower. Each run of stairs terminates at a large wood plank platform, which was considered to be safer than the landings of the MC-39 model (*see figure 3*), and lead to the increased popularity of the LS-40 in the 1940s and 1950s (Forest Fire Lookout Association n.d.). The Forest Fire Lookout Association noted about the Aermotor MC-39:

Likely the most popular of the steel designs and is similar to the International Derrick designs. A heavily galvanized free-standing batter-legged hurricane-proof structure with a 7x7' metal cab. It came in a wide choice of heights: 33' (4 flites, 44 steps); 45'9" (5 flites, 61 steps); 59'3" (79 steps); 79'6" (8 flites, 97 steps); 99'9" (9 flites, 133 steps). Also a few dozen were 120' tall; and the tallest, 176 feet.

As an intact example of an eighty-foot Aermotor LS-40, the Leach Fire Lookout Tower represents an important stage in the evolution of lookout tower architecture. The Leach Fire Lookout Tower retains its original **design** and a high level of its original fabric, and therefore maintains integrity. The historic **setting** has remained largely unchanged, with the minor addition of two modern sheds. Until the 1970s, the tower was used during high-fire season for fire detection, and was constantly manned. Since the mid-1970s, when forestry employees became more dependent on fire-spotting planes and fire reports from 911 emergency calls, the tower has ceased to be utilized for observance. After this time, Tennessee fire lookout towers were largely abandoned in favor of other methods of fire identification; however, the tower is occasionally ascended by forestry staff for maintenance checks.

For additional information, please refer to the Multiple Property Documentation Form, *Tennessee Division of Forestry Fire Lookout Towers, 1933-1975*.

Leach Fire Lookout Tower
Name of Property

Carroll County, Tennessee
County and State

9. Major Bibliographic References

Bibliography

Carroll County Register of Deeds

1956 Guy Lawrence, Pauline Haywood, and Gladys Ainsworth to State of Tennessee, Dept. of Conservation, Division of Forestry. 23 November. Deed Book 107, p. 578.

City-Data

2017 Cedar Grove, Tennessee city information. <http://www.city-data.com/city/Cedar-Grove-Tennessee.html>. Accessed June 20, 2017.

Forest Fire Lookout Association

n.d. Fire Lookout Types. Electronic document, <http://www.firelookout.org/fire-lookout-types.html>. Accessed June 5, 2014.

n.d. Leach Fire Lookout Tower record. <http://tnlandforms.us/towers/m.php?wpt=CRT002>. Accessed July 21, 2017.

Grosvenor, John R. and United States Forest Service.

1999 *A History of the Architecture of the USDA Forest Service*. Engineering Staff, United States Department of Agriculture Forest Service.

Kirksey, John

2014 Personal communication. John Kirksey, Fire Management Unit Leader, Tennessee Division of Forestry.

Starr, Bill

2011 *The Five Various Steel Fire Tower Models Utilized in New York State*. Electronic document, http://nhlr.org/NY_Towers/New_York_Steel_Fire_Tower_Models_by_Bill_Starr.pdf. Accessed June 5, 2014.

Steere, Peter L.

1987 "National Forest Fire Lookouts in the Southwestern Region, USDA Forest Service." National Register of Historic Places nomination, on file at the Kaibab National Forest.

University of Tennessee-Knoxville

2013 Tennessee Lookout Towers. Electronic document, <http://web.eecs.utk.edu/~dunigan/towers/>. Accessed June 4, 2014.

Refer to the Multiple Property Documentation Form "Tennessee Division of Forestry Fire Lookout Towers, 1933-1975" for additional related sources.

Leach Fire Lookout Tower
 Name of Property

Carroll County, Tennessee
 County and State

Previous documentation on file (NPS):		Primary location of additional data:	
<input checked="" type="checkbox"/>	preliminary determination of individual listing (36 CFR 67 has been requested)	X	State Historic Preservation Office
<input type="checkbox"/>	previously listed in the National Register		Other State agency
<input checked="" type="checkbox"/>	previously determined eligible by the National Register	X	Federal agency
<input type="checkbox"/>	designated a National Historic Landmark		Local government
<input type="checkbox"/>	recorded by Historic American Buildings Survey #		University
<input type="checkbox"/>	recorded by Historic American Engineering Record #		Other
<input type="checkbox"/>	recorded by Historic American Landscape Survey #	Name of repository: USDA Forest Service	
Historic Resources Survey Number (if assigned):			

Leach Fire Lookout Tower
Name of Property

Carroll County, Tennessee
County and State

10. Geographical Data

Acreage of Property 1 acre **USGS Quadrangle** Palmer-Shelter 10NW

Latitude/Longitude Coordinates

Datum if other than WGS84:
(enter coordinates to 6 decimal places)

Latitude: 35.913106 Longitude: -88.480372

Verbal Boundary Description

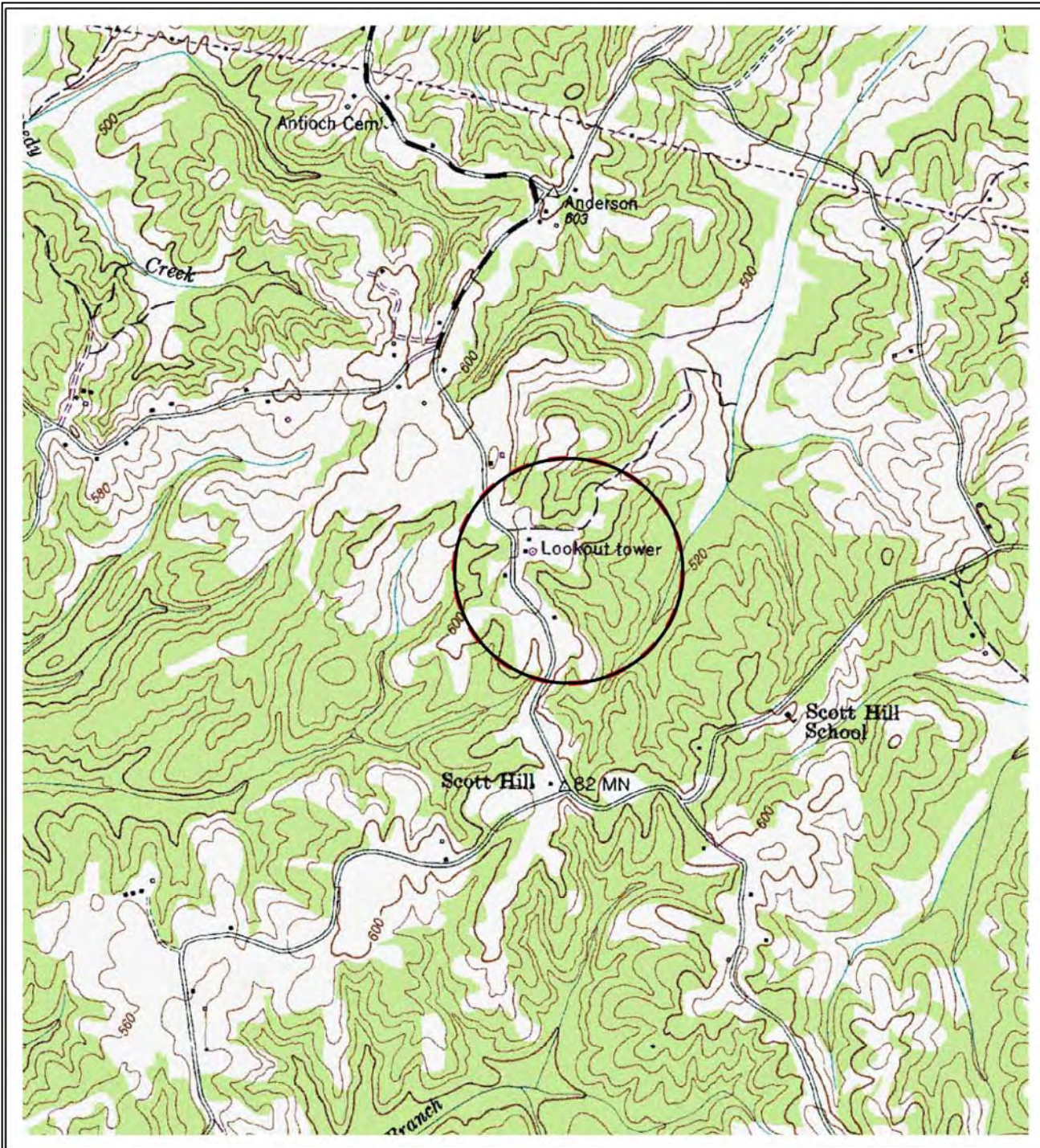
The proposed boundary of the Leach Fire Lookout Tower property aligns with Carroll County Parcel 120 042.01, and is shown on the accompanying boundary map. The National Register boundary includes four contributing buildings, two non-contributing buildings, and one non-contributing structure.

Boundary Justification


The National Register boundary for the Leach Fire Lookout Tower property includes those buildings that are historically associated with the fire observation complex during its period of significance (1957-1967) and retain adequate integrity.

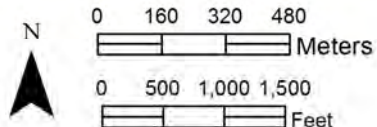
Leach Fire Lookout Tower
Name of Property

Carroll County, Tennessee
County and State



Location of Leach Fire Lookout Tower

 Fire lookout tower location

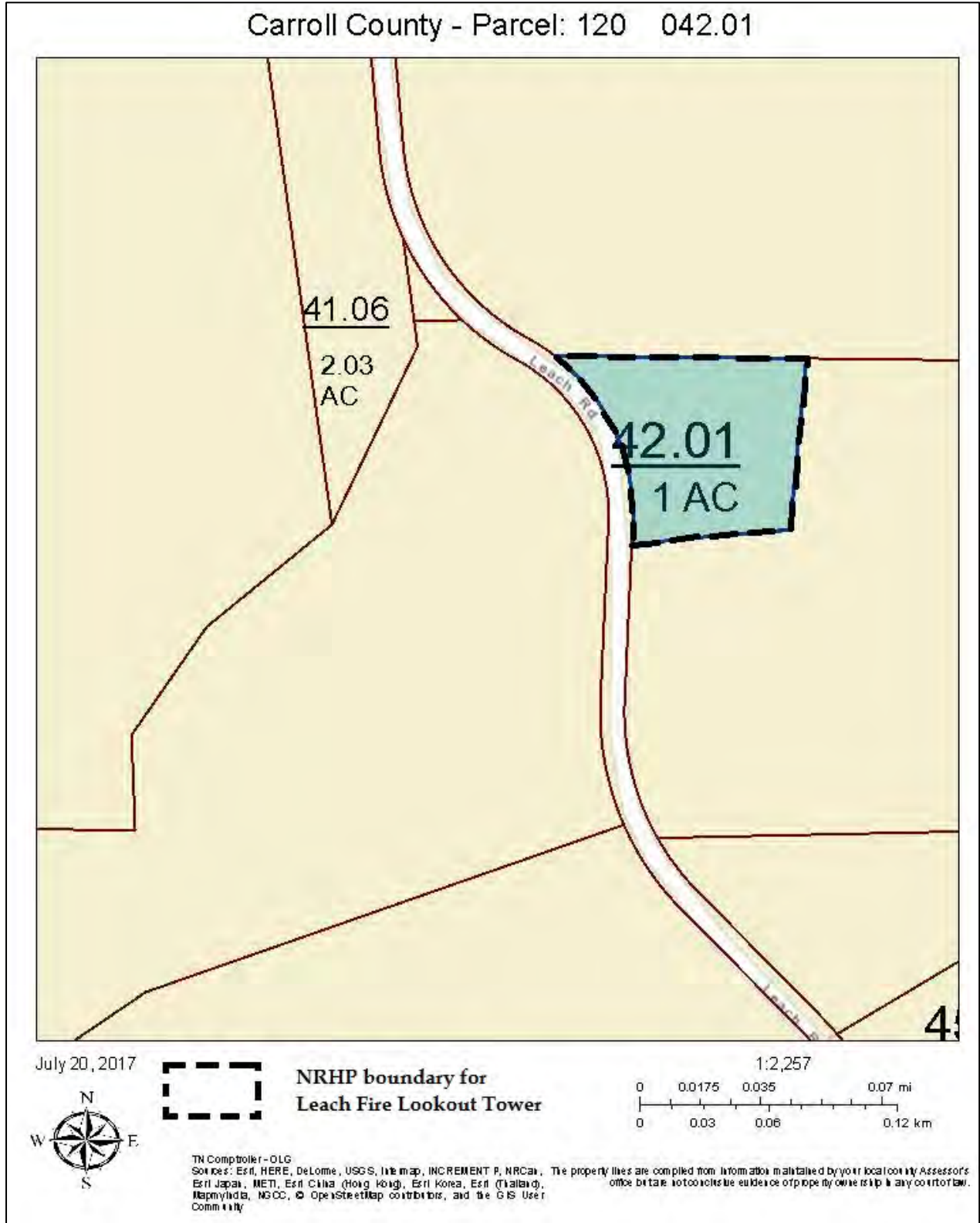


Located on USGS 1973 Palmer-Shelter 7.5-minute topographic quadrangle.

Leach Fire Lookout Tower
Name of Property

Carroll County, Tennessee
County and State

Leach Fire Lookout Tower NRHP Boundary Map



Leach Fire Lookout Tower
Name of Property

Carroll County, Tennessee
County and State

11. Form Prepared By

Name Sr. Preservation Planner Ted Karpyneec, Preservation Planner Meghan Weaver, and
Historian David Sprouse

Organization Tennessee Valley Archaeology Research

Street & Number 4219 Hillsboro Pike, Suite 201 Date June 4, 2014

City or Town Nashville Telephone 615-760-5693

E-mail mweaver@tvaresearch.com State TN Zip Code 37215

Additional Documentation

Submit the following items with the completed form:

- **Maps:** A **USGS map** or equivalent (7.5 or 15 minute series) indicating the property's location.
- **Sketch map** for historic districts and properties having large acreage or numerous resources. Key all photographs to map.
- **Photographs** (refer to Tennessee Historical Commission National Register *Photo Policy* for submittal of digital images and prints)
- **Additional items:** (additional supporting documentation including historic photographs, historic maps, etc. should be included on a Continuation Sheet following the photographic log and sketch maps)

Paperwork Reduction Act Statement: This information is being collected for applications to the National Register of Historic Places to nominate properties for listing or determine eligibility for listing, to list properties, and to amend existing listings. Response to this request is required to obtain a benefit in accordance with the National Historic Preservation Act, as amended (16 U.S.C.460 et seq.).
Estimated Burden Statement: Public reporting burden for this form is estimated to average 100 hours per response including time for reviewing instructions, gathering and maintaining data, and completing and reviewing the form. Direct comments regarding this burden estimate or any aspect of this form to the Office of Planning and Performance Management. U.S. Dept. of the Interior, 1849 C. Street, NW, Washington, DC.

Leach Fire Lookout Tower
Name of Property

Carroll County, Tennessee
County and State

Photo Log

Name of Property: Leach Fire Lookout Tower

City or Vicinity: Leach

County: Carroll State: Tennessee

Photographer: Meghan Weaver, Tennessee Valley Archaeological Research, Nashville, TN;
Jessica Baker, SWTDD

Date Photographed: May 1, 2014; August 1, 2017

- 1 of 37. Overview of Leach facility, including storage sheds (NC), utility building (C), fire lookout tower (C), and crew house (C). Camera facing southeast.
- 2 of 37. Fire lookout tower (C) north and west elevations. Lookout operator's cabin (C) in background. Camera facing southeast.
- 3 of 37. Fire lookout tower (C) south elevation. Camera facing north.
- 4 of 37. Fire lookout tower (C) east elevation. Crew house (C) in background. Camera facing west.
- 5 of 37. Fire lookout tower (C) cab north and west elevations. Camera facing southeast.
- 6 of 37. Fire lookout tower (C) cab south and east elevations. Camera facing northwest.
- 7 of 37. Fire lookout tower (C) bracing detail.
- 8 of 37. Fire lookout tower (C) stairway detail. Camera facing east.
- 9 of 37. Fire lookout tower (C) concrete foot pad detail.
- 10 of 37. Fire lookout tower (C) stamp reading "USS G USA" detail.
- 11 of 37. Fire lookout tower (C) location of missing manufacturer's plaque.
- 12 of 37. Fire lookout tower (C) interior with alidade.
- 13 of 37. Fire lookout tower (C) interior with alidade table.
- 14 of 37. Fire lookout tower (C) interior.
- 15 of 37. Fire lookout tower (C) interior, view of trap door.
- 16 of 37. Fire lookout tower (C) interior.
- 17 of 37. Crew house (C) south and west elevations. Camera facing northeast.

Leach Fire Lookout Tower
Name of Property

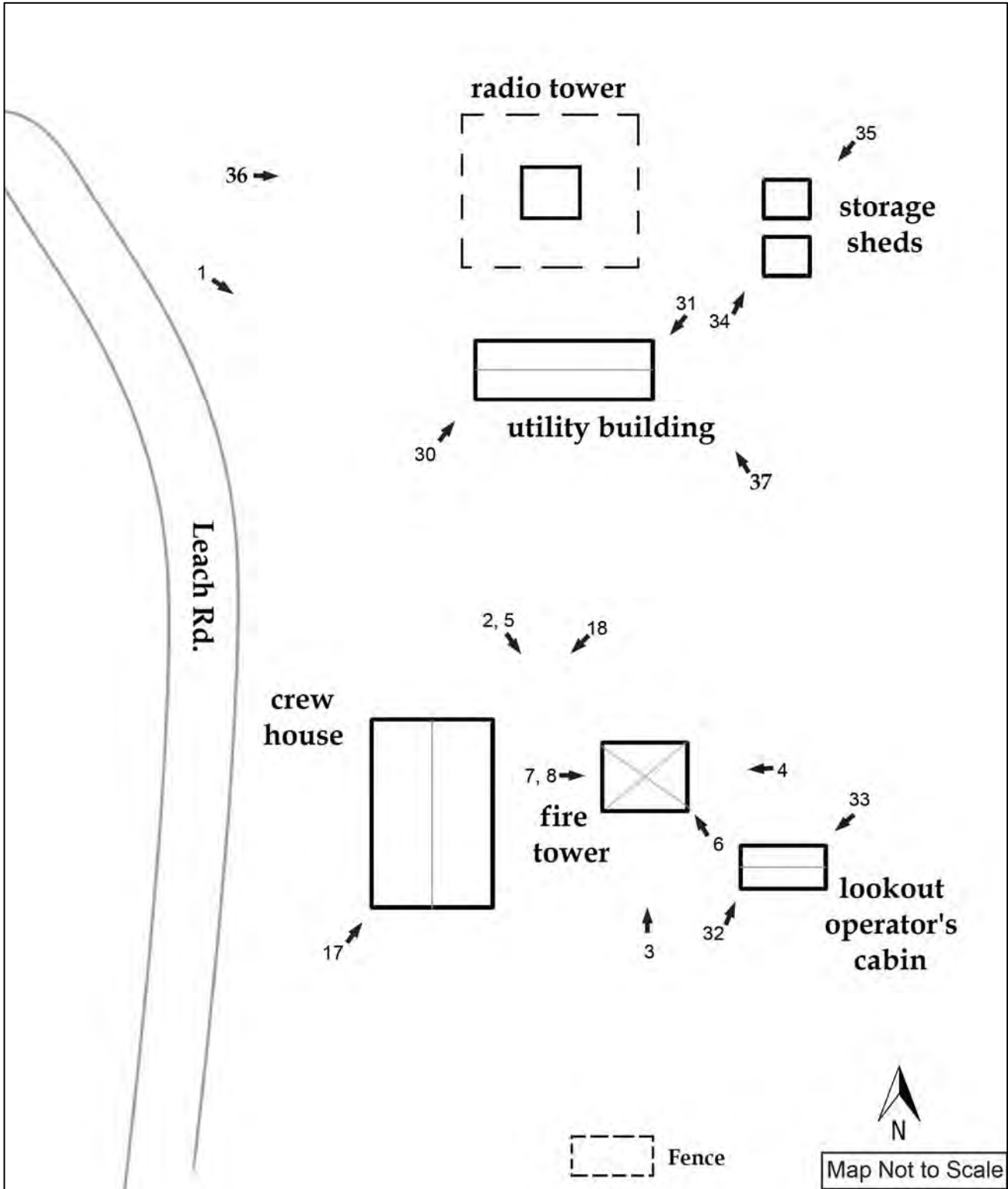
Carroll County, Tennessee
County and State

- 18 of 37. Crew house (C) north and east elevations. Camera facing southwest.
- 19 of 37. Crew house (C) interior hallway.
- 20 of 37. Crew house (C) interior, bathroom.
- 21 of 37. Crew house (C) interior, first office.
- 22 of 37. Crew house (C) interior, second office.
- 23 of 37. Crew house (C) interior, second office.
- 24 of 37. Crew house (C) interior, kitchen.
- 25 of 37. Crew house (C) interior, kitchen.
- 26 of 37. Crew house (C) interior, main room.
- 27 of 37. Crew house (C) interior, main room.
- 28 of 37. Crew house (C) interior, second office.
- 29 of 37. Crew house (C) interior, main room.
- 30 of 37. Utility building (C) south and west elevations. Camera facing northeast.
- 31 of 37. Utility building (C) north and east elevations. Camera facing southwest.
- 32 of 37. Lookout operator's cabin (C) south and west elevations. Camera facing northeast.
- 33 of 37. Lookout operator's cabin (C) north and east elevations. Camera facing southwest.
- 34 of 37. Storage sheds (NC) south and west elevations. Camera facing northeast.
- 35 of 37. Storage shed (NC) north and east elevations. Camera facing southwest.
- 36 of 37. Radio tower (NC) west elevation. Camera facing east.
- 37 of 37. Utility building (C) southeast oblique and fenced area with radio tower (NC). Camera facing northwest.

Leach Fire Lookout Tower
Name of Property

Carroll County, Tennessee
County and State

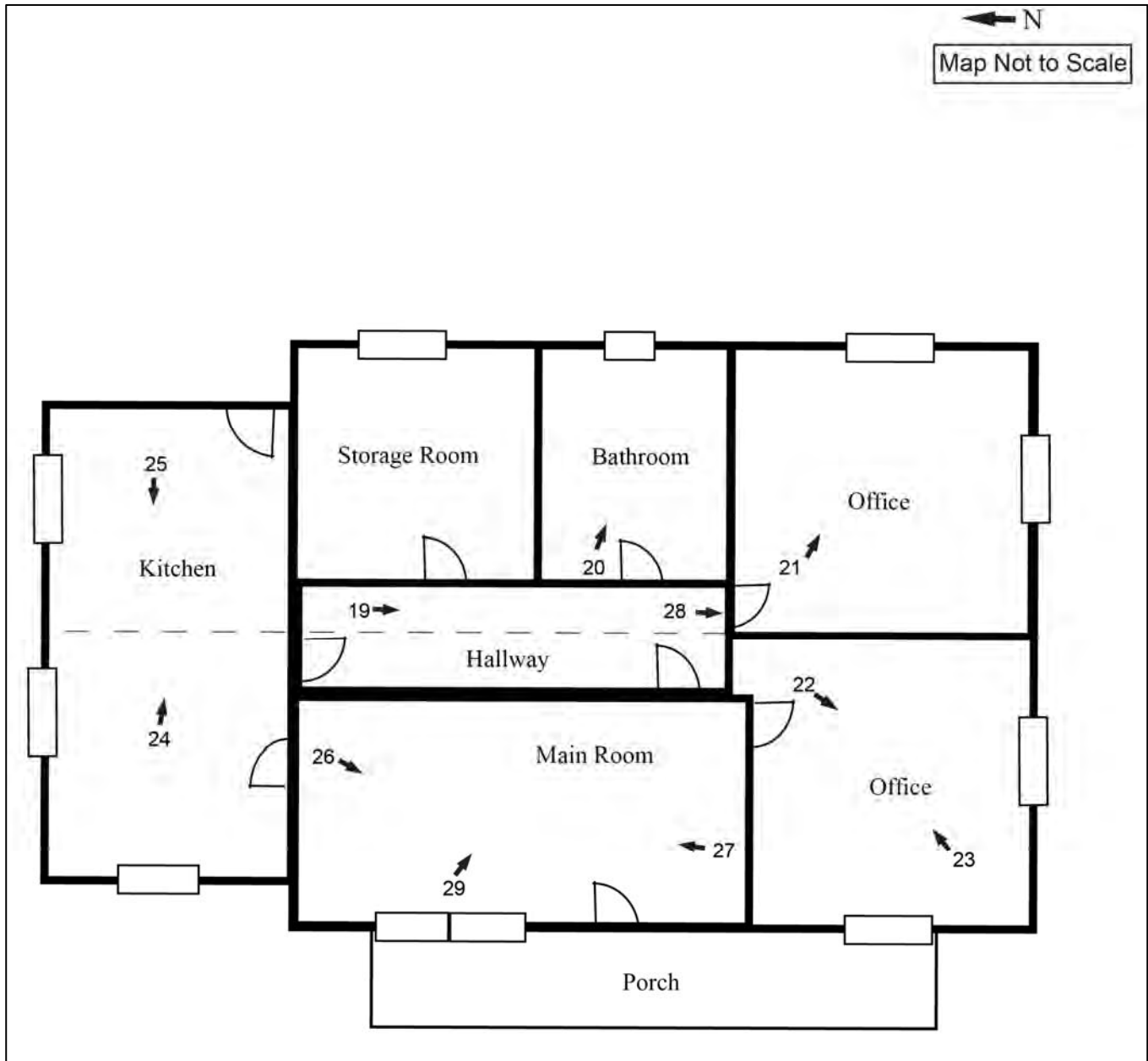
Leach Fire Lookout Tower, Site Plan with Photo Key



Leach Fire Lookout Tower
Name of Property

Carroll County, Tennessee
County and State

Leach Fire Lookout Tower, Crew House Floor Plan with Photo Key



United States Department of the Interior
National Park Service

National Register of Historic Places
Continuation Sheet

Section number figures Page 19

Leach Fire Lookout Tower
 Name of Property
 Carroll County, TN
 County and State
 Tennessee Division of Forestry Fire
 Lookout Towers, 1933-1975
 Name of multiple listing (if applicable)

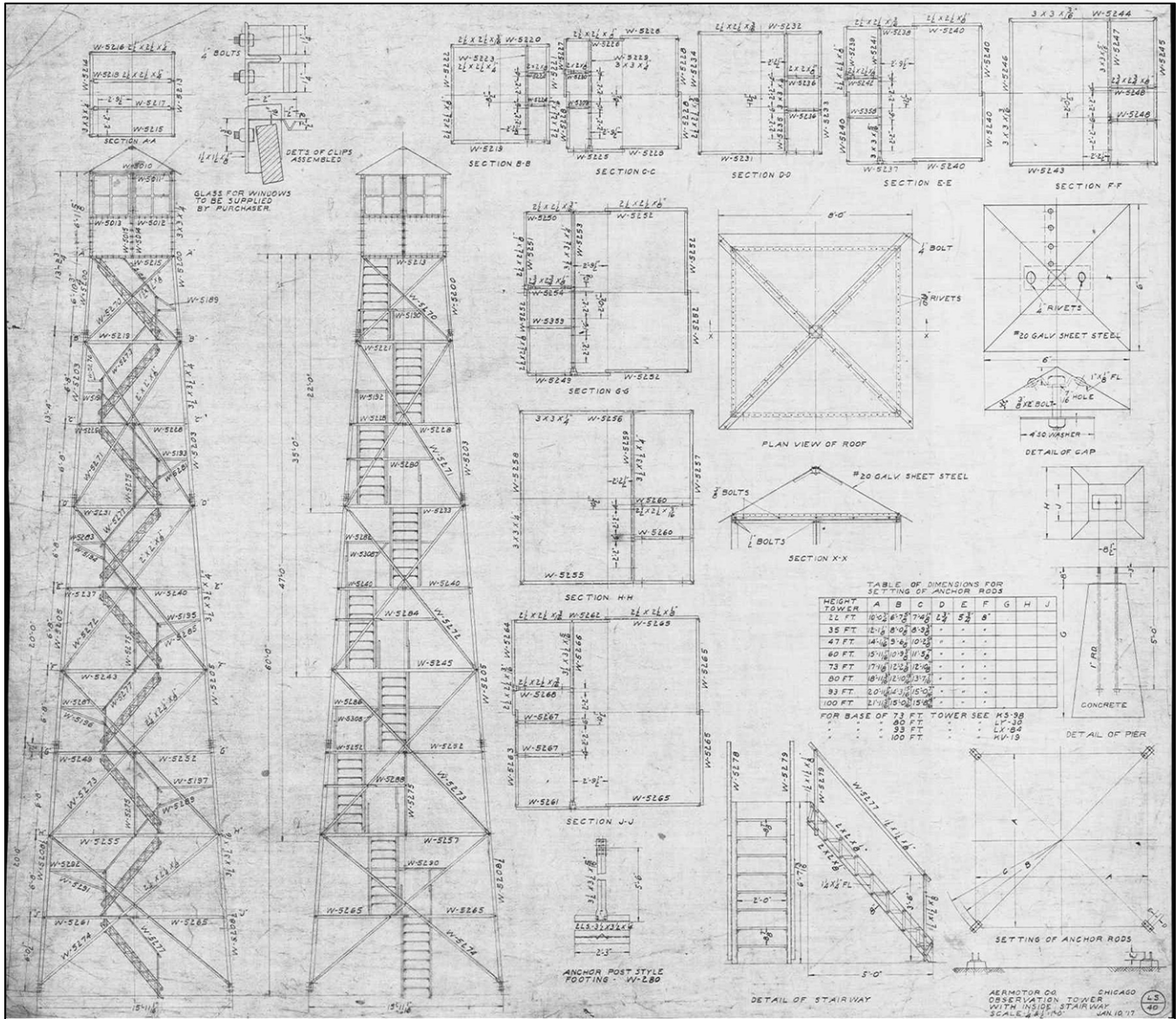


Figure 1. Aermotor LS-40 60-foot Observation Tower schematic, 1917.

Source: Aermotor Fire Lookout Tower Drawings, courtesy of Bill Cobb (webmaster), Forest Fire Lookout Association, <http://firelookout.org/resources.html>, accessed July 24, 2017.

United States Department of the Interior
National Park Service

National Register of Historic Places Continuation Sheet

Section number figures Page 20

Leach Fire Lookout Tower
 Name of Property
 Carroll County, TN
 County and State
*Tennessee Division of Forestry Fire
 Lookout Towers, 1933-1975*
 Name of multiple listing (if applicable)

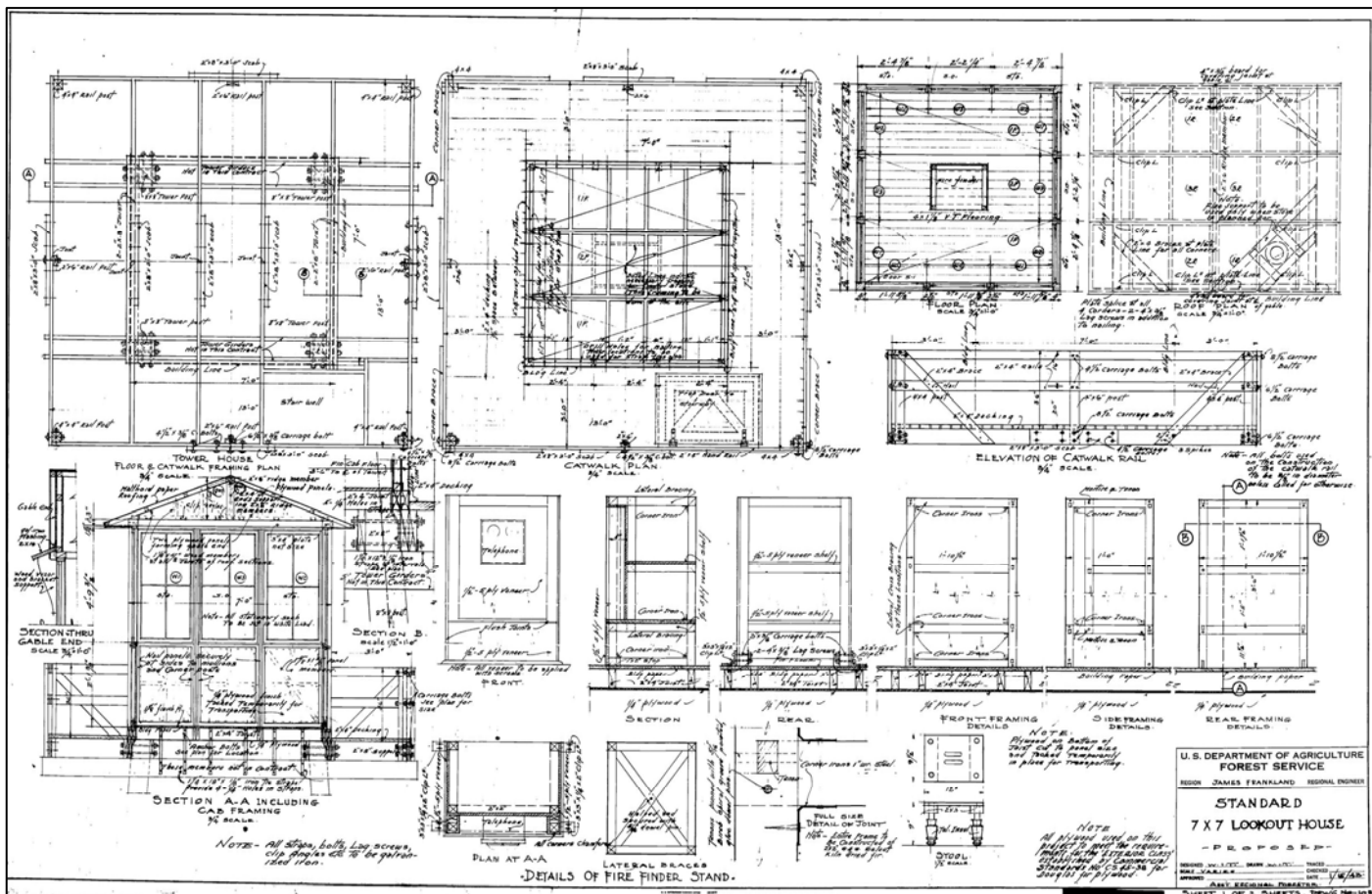


Figure 2. Aermotor Standard 7x7 Lookout House Schematic, ca. 1943.
 Source: Pacific Northwest Region Forest Service Region 6 Lookout Tower Drawings,
<https://www.fs.fed.us/database/acad/lt/>, accessed July 24, 2017.

United States Department of the Interior
National Park Service

National Register of Historic Places Continuation Sheet

Section number figures Page 21

Leach Fire Lookout Tower

Name of Property

Carroll County, TN

County and State

Tennessee Division of Forestry Fire

Lookout Towers, 1933-1975

Name of multiple listing (if applicable)

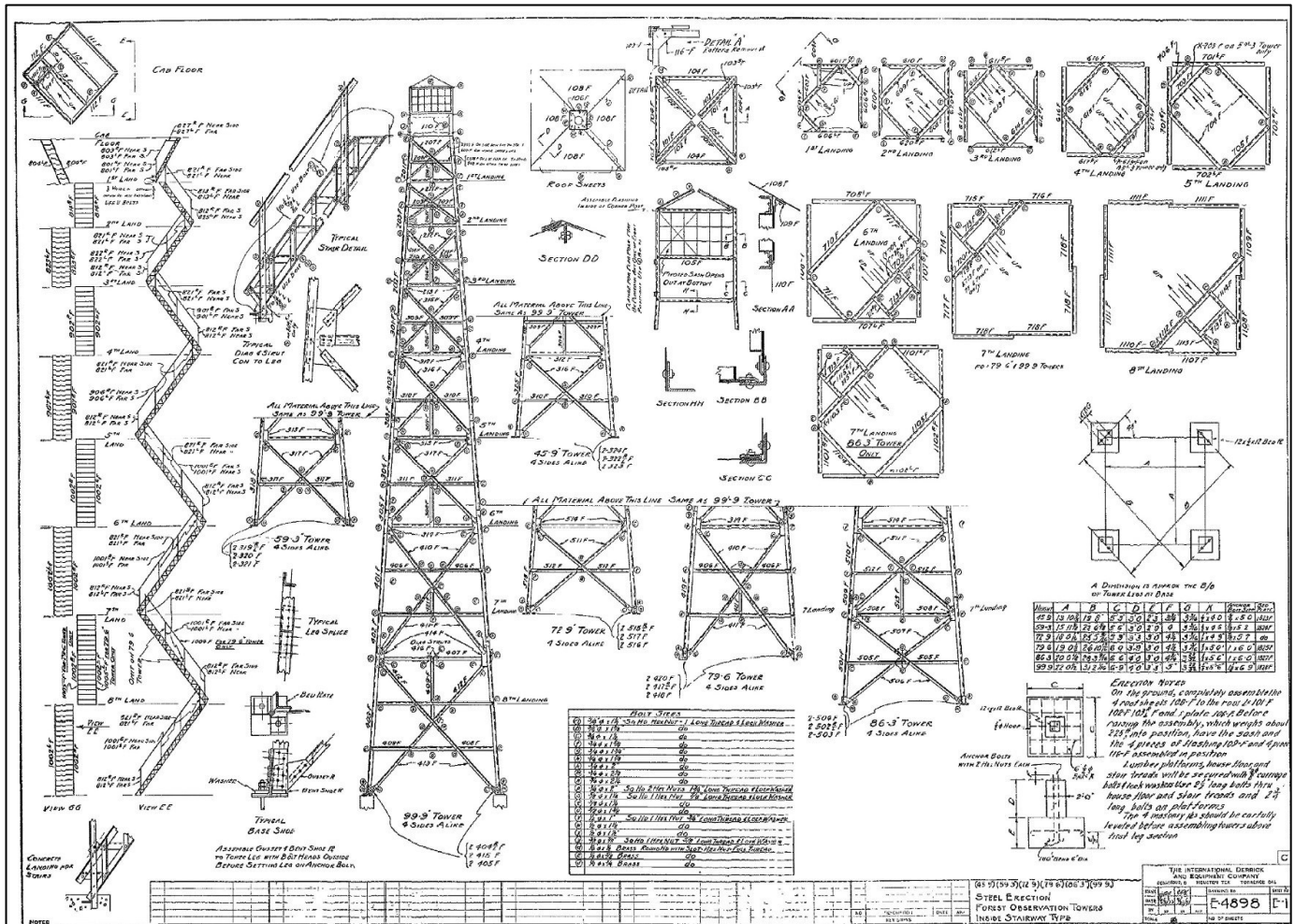


Figure 3. International Derrick Model, ca. 1933 showing inside stairway type. The LS-40 stairway was designed to be safer than these previous models. Source: Courtesy of Bill Cobb (webmaster), Forest Fire Lookout Association, <http://firelookout.org/resources.html>, accessed July 24, 2017.

















NO TRAMPING
HUNTING OF
WILDLIFE
IS PROHIBITED





G U S A



NO TRESPASSING
HUNTING OR FISHING
VIOLATORS SUBJECT TO
PROSECUTION UNDER ALL
APPLICABLE LAWS















OFFICE









TENNESSEE
FORESTRY
DEPARTMENT OF REVENUE

WILD FIRE







EMERGENCY
EXIT

You Don't
and
IT'S TH

Leaflet
[Illegible text]

[Illegible poster]

[Illegible poster]



IT'S THE LAW

























UNITED STATES DEPARTMENT OF THE INTERIOR
NATIONAL PARK SERVICE

NATIONAL REGISTER OF HISTORIC PLACES
EVALUATION/RETURN SHEET

Requested Action:

Property Name:

Multiple Name:

State & County:

Date Received: 10/4/2017 Date of Pending List: 11/14/2017 10:44:45 AM Date of 16th Day: 11/13/2017 Date of 45th Day: 11/20/2017 Date of Weekly List:

Reference number:

Nominator:

Reason For Review:

- | | | |
|---------------------------------------|--|---|
| <input type="checkbox"/> Appeal | <input type="checkbox"/> PDIL | <input type="checkbox"/> Text/Data Issue |
| <input type="checkbox"/> SHPO Request | <input type="checkbox"/> Landscape | <input type="checkbox"/> Photo |
| <input type="checkbox"/> Waiver | <input type="checkbox"/> National | <input type="checkbox"/> Map/Boundary |
| <input type="checkbox"/> Resubmission | <input type="checkbox"/> Mobile Resource | <input type="checkbox"/> Period |
| <input type="checkbox"/> Other | <input type="checkbox"/> TCP | <input type="checkbox"/> Less than 50 years |
| | <input type="checkbox"/> CLG | |

Accept Return Reject 11/14/2017 Date

Abstract/Summary Comments:

Recommendation/ Criteria:

Reviewer Jim Gabbert Discipline Historian

Telephone (202)354-2275 Date _____

DOCUMENTATION: see attached comments : No see attached SLR : **Yes**

If a nomination is returned to the nomination authority, the nomination is no longer under consideration by the National Park Service.



TENNESSEE HISTORICAL COMMISSION
STATE HISTORIC PRESERVATION OFFICE
2941 LEBANON PIKE
NASHVILLE, TENNESSEE 37243-0442
OFFICE: (615) 532-1550
E-mail: Claudette.Stager@tn.gov
(615) 770-1089

September 18, 2017

J. Paul Loether
Deputy Keeper and Chief
National Register and National Historic Landmark Programs
National Register of Historic Places
Mail Stop 7228
1849 C St. NW
Washington, D.C. 20240

Dear Mr. Loether:

Enclosed please find the documentation to nominate the *Leach Fire Lookout Tower* to the National Register of Historic Places. The enclosed disks contain the true and correct copy of the nomination for the listing of the *Leach Fire Lookout Tower* to the National Register of Historic Places.

If you have any questions or if more information is needed, contact Holly Barnett at (615) 770-1098 or Holly.Barnett@tn.gov.

Sincerely,

Claudette Stager
Deputy State Historic Preservation Officer

CS:hb

Enclosures (3)