



KEYS HILL HISTORIC DISTRICT
Columbia, Marion County, Mississippi

Looking northerly, the facade of 1405 Broad
Street (element #6) .

Mary W. Miller, Historic Natchez Foundation,
January 1982.

Photo 1 of 12



KEYS HILL HISTORIC DISTRICT

Columbia, Marion County, Mississippi

Looking northerly, the facade of 1305 Broad
Street (element 5).

Mary W. Miller, Historic Natchez Foundation,
January 1982

Photo 2 of 12



KEYS HILL HISTORIC DISTRICT

Columbia, Marion County, Mississippi

Looking northerly, the facade of 1301
Broad Street (element 4).

Mary W. Miller, Historic Natchez Foundation,
January 1982.

Photo 3 of 12



KEYS HILL HISTORIC DISTRICT
Columbia, Marion County, Mississippi
Looking easterly, the facade of 1303
Broad Street. Element 3.

Mary W. Miller, Historic Natchez Foundation,
January 1982

Photo 4 of 12



KEYS HILL HISTORIC DISTRICT

Columbia, Marion County, Mississippi

Looking northeasterly, the facade of
1311 Broad Street (element 2).

Mary W. Miller, Historic Natchez Foundation,
January 1982.

Photo 5 of 12

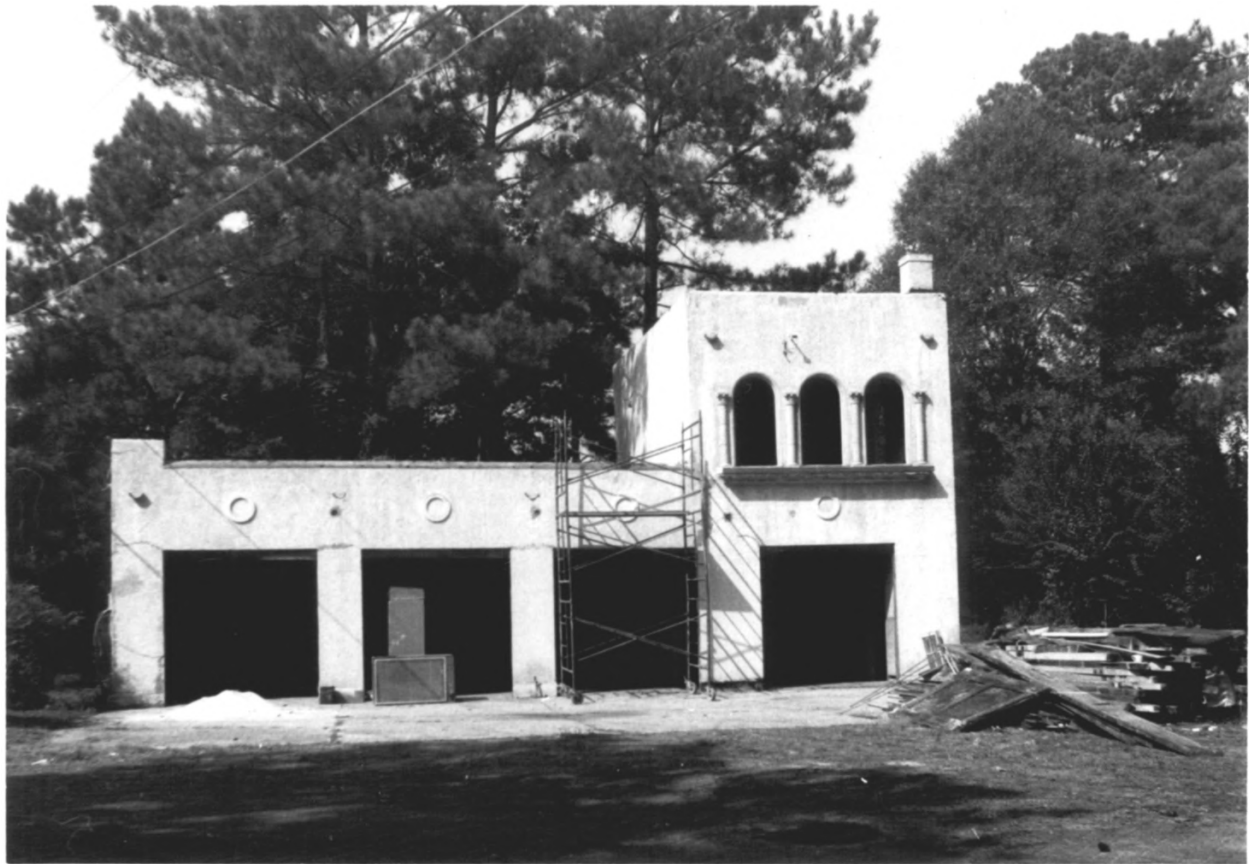


KEYS HILL HISTORIC DISTRICT
Columbia, Marion County, Mississippi

Looking northwesterly, the facade of
1 Hugh White Drive (element 1).

Mary W. Miller, Historic Natchez Foundation,
January 1982.

Photo 6 of 12.



KEYS HILL HISTORIC DISTRICT
Columbia, Marion County, Mississippi

Looking northerly, the facade of the garage
of 1 Hugh White Drive (element 1).

Mary W. Miller, Historic Natchez Foundation,
January 1982.

Photo 7 of 12



KEYS HILL HISTORIC DISTRICT

Columbia, Marion County, Mississippi

Looking northwesterly, the facade of the
Cook's House for 1 Hugh White Drive
(element 1).

Mary W. Miller, Historic Natchez Foundation,
January 1982.

Photo 8 of 12



KEYS HILL HISTORIC DISTRICT

Columbia, Marion County, Mississippi

Looking northwesterly, the wooded park like surroundings of 1 Hugh White Drive showing the swimming pool.

Mary W. Miller, Historic Natchez Foundation,
January 1982.

Photo 9 of 12



KEYS HILL HISTORIC DISTRICT

Columbia, Marion County, Mississippi

Looking westerly, the reflecting pool and arbor of 1 Hugh White Drive (element 1).

Mary W. Miller, Historic Natchez Foundation,
January 1982.

Photo 10 of 12



KEYS HILL HISTORIC DISTRICT

Columbia, Marion County, Mississippi

Looking northeasterly, the reflecting pool and steps leading to the lower garden from the circular drive of 1 Hugh White Drive (element 1).

Mary W. Miller, Historic Natchez Foundation,
January 1982.

Photo 11 of 12



KEYS HILL HISTORIC DISTRICT

Columbia, Marion County, Mississippi

Looking northwesterly, the facade of
element 7 on Benjamin Street.

Mary W. Miller, Historic Natchez Foundation,
January 1982

Photo 12 of 12