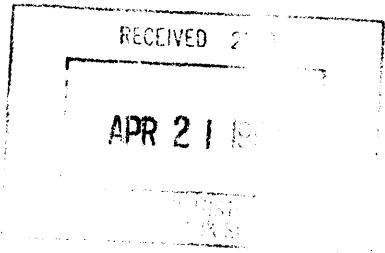


United States Department of the Interior
National Park Service

National Register of Historic Places
Registration Form



467

This form is for use in nominating or requesting determinations for individual properties and districts. See instructions in *How to Complete the National Register of Historic Places Registration Form* (National Register Bulletin 16A). Complete each item by marking "x" in the appropriate box or by entering the information requested. If an item does not apply to the property being documented, enter "N/A" for "not applicable." For functions, architectural classification, materials, and areas of significance, enter only categories and subcategories from the instructions. Place additional entries and narrative items on continuation sheets (NPS Form 10-900a). Use a typewriter, word processor, or computer, to complete all items.

1. Name of Property

historic name Hoffpaur, Ellis House

other names/site number Estherwood Manor

2. Location

street & number 210 LeBlanc Street N/A not for publication

city or town Estherwood N/A vicinity

state Louisiana code LA county Acadia code 001 zip code 70534

3. State/Federal Agency Certification

As the designated authority under the National Historic Preservation Act, as amended, I hereby certify that this nomination request for determination of eligibility meets the documentation standards for registering properties in the National Register of Historic Places and meets the procedural and professional requirements set forth in 36 CFR Part 60. In my opinion, the property meets does not meet the National Register criteria. I recommend that this property be considered significant nationally statewide locally. (See continuation sheet for additional comments.)

Jonathan Fricker 4/15/97
Signature of certifying official/Title Jonathan Fricker, Deputy SHPO, Dept of Culture, Recreation and Tourism Date
State of Federal agency and bureau

In my opinion, the property meets does not meet the National Register criteria. (See continuation sheet for additional comments.)

Signature of commenting official/Title Date

State or Federal agency and bureau

4. National Park Service Certification

I hereby certify that the property is:

- entered in the National Register. See continuation sheet.
- determined eligible for the National Register See continuation sheet.
- determined not eligible for the National Register.
- removed from the National Register.
- other, (explain): _____

Michael M. W... Signature of the Keeper Date of Action 4/15/97

Ellis Hoffpauir House
Name of Property

Acadia Parish, LA
County and State

5. Classification

Ownership of Property
(Check as many boxes as apply)

- private
- public-local
- public-State
- public-Federal

Category of Property
(Check only one box)

- building(s)
- district
- site
- structure
- object

Number of Resources within Property
(Do not include previously listed resources in the count.)

Contributing	Noncontributing	
1	1	buildings
		sites
		structures
		objects
1	1	Total

Name of related multiple property listing
(Enter "N/A" if property is not part of a multiple property listing.)

N/A

Number of contributing resources previously listed in the National Register

0

6. Function or Use

Historic Functions
(Enter categories from instructions)

Domestic/single dwelling

Current Functions
(Enter categories from instructions)

Domestic/single dwelling

7. Description

Architectural Classification
(Enter categories from instructions)

Colonial Revival

Materials
(Enter categories from instructions)

foundation brick

walls weatherboard

roof asphalt

other

Narrative Description

(Describe the historic and current condition of the property on one or more continuation sheets.)

**United States Department of the Interior
National Park Service**

**National Register of Historic Places
Continuation Sheet**

Hoffpauir House, Acadia Parish, LA
Section number 7 Page 1

The Ellis Hoffpauir House (known today as Estherwood Manor) is a large, two story, wood frame residence set on a generous lot in the small rural community of Estherwood in Acadia Parish. Built in several stages, its present Colonial Revival styling is the result of a major renovation and enlargement undertaken c. 1930. Despite some non-historic alterations, the house substantially retains its appearance from the c.1930 remodeling.

The Hoffpauir House has a complex building history. It began in 1905 as a two story house two rooms wide and one room deep with a substantial two story rear wing. The front featured a double Eastlake gallery of three bays. There was a similar gallery running along the wing. Each of the gable peaks was fitted with a decorative Eastlake apron. (See attached photo.)

Historic photographs (see attached) reveal that by about 1915, the Eastlake columns on the front gallery had been replaced with round single story Colonial Revival columns. In addition, a two story gabled block, almost matching the main block, had been added at the rear. Finally, the old rear gallery had been enclosed.

The major remodeling that established the house's present architectural character took place circa 1930. (The exact date is not known. Circa 1930 seems reasonable given the style.) At that time the 32 foot wide main block was extended to each side by about 10 feet. The two downstairs rooms, previously 16' by 16', were now 16' feet deep and 26 feet wide. The new long facade of the main block now featured an irregular series of windows placed singularly and in pairs. The character-defining feature of the c.1930 remodeling was a massive Mt. Vernon style portico, of five more or less regular bays across the front and extending down the south side for another two bays. To complete the Mt. Vernon look, the old gallery floor on the second story was evidently removed. This left the old upstairs doors with no floor to access. This condition was remedied by the addition of a balcony across the facade fitted with a low-key Chinese Chippendale inspired balustrade. Two smaller similar balconies were added to the southern side elevation. Shutters and an almost central entrance with sidelights completed the "colonial" look.

Also at this time the ground story of the old enclosed gallery on the rear wing was extended with a polygonal shape like a huge bay. This was surmounted by a balustrade similar to the ones previously described. (This was subsequently removed when the old upper gallery enclosure was extended.) Finally, a two column portico matching that on the front was added to the old gabled block rear addition. Although the c.1930 remodeling was obviously quite extensive, the Eastlake gable aprons were retained.

**United States Department of the Interior
National Park Service**

**National Register of Historic Places
Continuation Sheet**

Hoffpauir House, Acadia Parish, LA
Section number 7 Page 2

The interiors at the Hoffpauir House are low-key and mainly reflect the c.1930 Colonial Revival remodeling. The two large rooms downstairs in the main block received decorative false beam ceilings and three doorways were fitted with simple round arch openings.

Non-historic alterations include:

- (1) A single story, slab on grade rear wing has been added to which a carport was later attached.
- (2) New Orleans style cast-iron balustrades have been installed between the bases of the gallery columns.
- (3) There are no surviving historic mantels. There are presently three simple marble mantels of fairly recent vintage (one in each of the first floor rooms of the main block and one upstairs).
- (4) As noted previously, the balustrade above the bay on the side elevation was removed when the old upper gallery enclosure was extended.

At some point, a wall was removed between the dining room (rear wing) and what may have been a butler's pantry. Also, windows on the first floor of the north side have been removed.

Assessment of Integrity:

Changes which have occurred since the c.1930 remodeling are relatively minor. They have not significantly impacted the manifestly Colonial Revival character of the house. There is no doubt that the house would be immediately recognizable to Ellis Hoffpauir, a locally significant individual who had it built 1905 and subsequently remodeled over the years.

Non-contributing Element:

Immediately adjacent to the rear of the house is a historic garage which has been completely remodeled on the exterior, including removing the old garage door and installing vinyl siding. Because its exterior character has been fundamentally altered, it is being counted as a non-contributing element.

United States Department of the Interior
National Park Service

**National Register of Historic Places
Continuation Sheet**

Hoffpauir House, Acadia Parish, LA
Section number 7 Page 3

as originally built in 1905



circa 1915 photo (after
1st remodeling)



8. Statement of Significance

Applicable National Register Criteria

(Mark "x" in one or more boxes for the criteria qualifying the property for National Register listing.)

- Property is associated with events that have made a significant contribution to the broad patterns of our history.
Property is associated with the lives of persons significant in our past.
Property embodies the distinctive characteristics of a type, period, or method of construction or represents the work of a master, or possesses high artistic values, or represents a significant and distinguishable entity whose components lack individual distinction.
Property has yielded, or is likely to yield, information important in prehistory or history.

Criteria Considerations N/A
(Mark "x" in all the boxes that apply.)

Property is:

- owned by a religious institution or used for religious purposes.
removed from its original location.
a birthplace or grave.
a cemetery.
a reconstructed building, object, or structure.
a commemorative property.
less than 50 years of age or achieved significance within the past 50 years.

Areas of Significance

(Enter categories from instructions)

education

Period of Significance

1905 - 1947

Significant Dates

1905, c.1930

Significant Person

(Complete if Criterion B is marked above)

Hoffpauir, Ellis

Cultural Affiliation

N/A

Architect/Builder

unknown

Narrative Statement of Significance

(Explain the significance of the property on one or more continuation sheets.)

9. Major Bibliographical References

Bibliography

(Cite the books, articles, and other sources used in preparing this form on one or more continuation sheets.)

Previous documentation on file (NPS): N/A

- preliminary determination of individual listing (36 CFR 67) has been requested
previously listed in the National Register
previously determined eligible by the National Register
designated a National Historic Landmark
recorded by Historic American Buildings Survey #
recorded by Historic American Engineering Record #

Primary location of additional data:

- State Historic Preservation Office
Other State agency
Federal agency
Local government
University
Other

Name of repository:

**United States Department of the Interior
National Park Service**

**National Register of Historic Places
Continuation Sheet**

Hoffpauir House, Acadia Parish, LA
Section number 8 Page 1

The Ellis Hoffpauir House is locally significant in the area of education as the home of Ellis Hoffpauir from its construction in 1905 until Hoffpauir's death in 1954 at the age of 82. A greatly respected friend of public education, Hoffpauir served on the parish school board for almost thirty-five years (1913-1932, 1938-54). He was elected president in 1947, after having served several years as vice-president. The period of significance spans from the year Hoffpauir had the house built (1905) to the current fifty year cutoff (1947).

The Hoffpauir name is well known in Acadia Parish, especially in Estherwood, where the Hoffpauirs are considered one of the founding families and various members have made contributions in various fields over the years. Ellis Hoffpauir moved to Estherwood in 1899 from nearby Lafayette Parish and was mentioned at the time of his death as being a pioneer in the settlement of the area. Estherwood, like the nearby parish seat of Crowley, did not exist until the railroad arrived in the 1880s. When Hoffpauir moved to Estherwood, it was a tiny rural hamlet with not even enough population to be incorporated as a village. This status was granted in 1901, and Ellis Hoffpauir soon became involved in local politics, serving two partial terms as mayor (1907 and 1909) and a full term from 1910-12. Like most everyone else in the area, he was in the rice business.

It is, however, the field of education with which Hoffpauir's name is most closely linked. While his specific accomplishments are not known, it is clear that his name was synonymous with education and that he served on the school board during a period of great change and improvement as public education across Louisiana moved from one room wood frame buildings to large, modern consolidated schools financed by parishwide taxes. Generally speaking, public education in Louisiana did not make rapid strides until the early twentieth century. Various phenomena are generally regarded as milestones in any school system's development: for example, parishwide taxes to support public education, the creation of high schools, and a new era of "modern brick schools" (as they were termed at the time). Considerable advancement in these and other areas (for example, school consolidation) came during Hoffpauir's long tenure on the school board.

Although a parishwide tax to support education (as opposed to taxes voted by wards and districts) had been proposed as early as 1907, it met with resistance from voters for several years, finally being accepted in 1919 and continued and increased in various elections thereafter as called by the school board. Successful tax elections and special bond issues in the teens and '20s made it possible to greatly improve the physical plant of Acadia Parish schools and to create high schools. In regard to the latter, there were no state approved high schools in the parish prior to 1908, but by 1921, there were seven. In reference to the physical plant,

CONTINUED

**United States Department of the Interior
National Park Service**

**National Register of Historic Places
Continuation Sheet**

Hoffpauir House, Acadia Parish, LA
Section number 8 Page 2

Acadia Parish made the transition from frame school buildings (often of one or two rooms) to “modern” brick facilities -- a recognizable chapter in the history of public education in the state, with the latter universally by their very nature considered to be better. Building materials aside, these new public schools which appeared across Louisiana in the early twentieth century were much larger and better equipped, making it possible to separate students by grades and provide educational amenities such as science labs and the like. Acadia Parish’s school building projects of the teens and ‘20s, financed locally, were supplemented by federal relief funds during the Depression.

That Hoffpauir was a noted figure in public education in Acadia Parish is borne out in commentary at the time of his death in 1954. The *Crowley Daily Signal* lamented his passing in an editorial. It began: “The field of public education has lost a pioneer, a champion, and a leader in the death of Ellis Hoffpauir of Estherwood.” Mr. Hoffpauir, continued the editorial, “devoted much of his time to the task of providing the facilities necessary for the education of all children of Acadia Parish. . . . Mr. Hoffpauir lived to see small, poorly-equipped schools give way to modern buildings where instruction keeps pace with a changing world.” As might be expected at the passing of a prominent individual, Hoffpauir’s death was front page news in the Crowley paper, with the note that all schools in the parish would be closed for a day in his memory. The man who, according to a 1937 source, presented diplomas at the local grammar school and high school “practically every year” in lived in Estherwood was suitably honored.

**United States Department of the Interior
National Park Service**

**National Register of Historic Places
Continuation Sheet**

Hoffpauir House, Acadia Parish, LA
Section number 9 Page 1
10 1

BIBLIOGRAPHY

Conveyance records, Acadia Parish, copies of certain documents in National Register file,
Louisiana Division of Historic Preservation.

Crowley Daily Signal, March 5, March 9, 1954.

Crowley Daily Signal, October 4, 1937. Special fiftieth anniversary edition with several page
section on education.

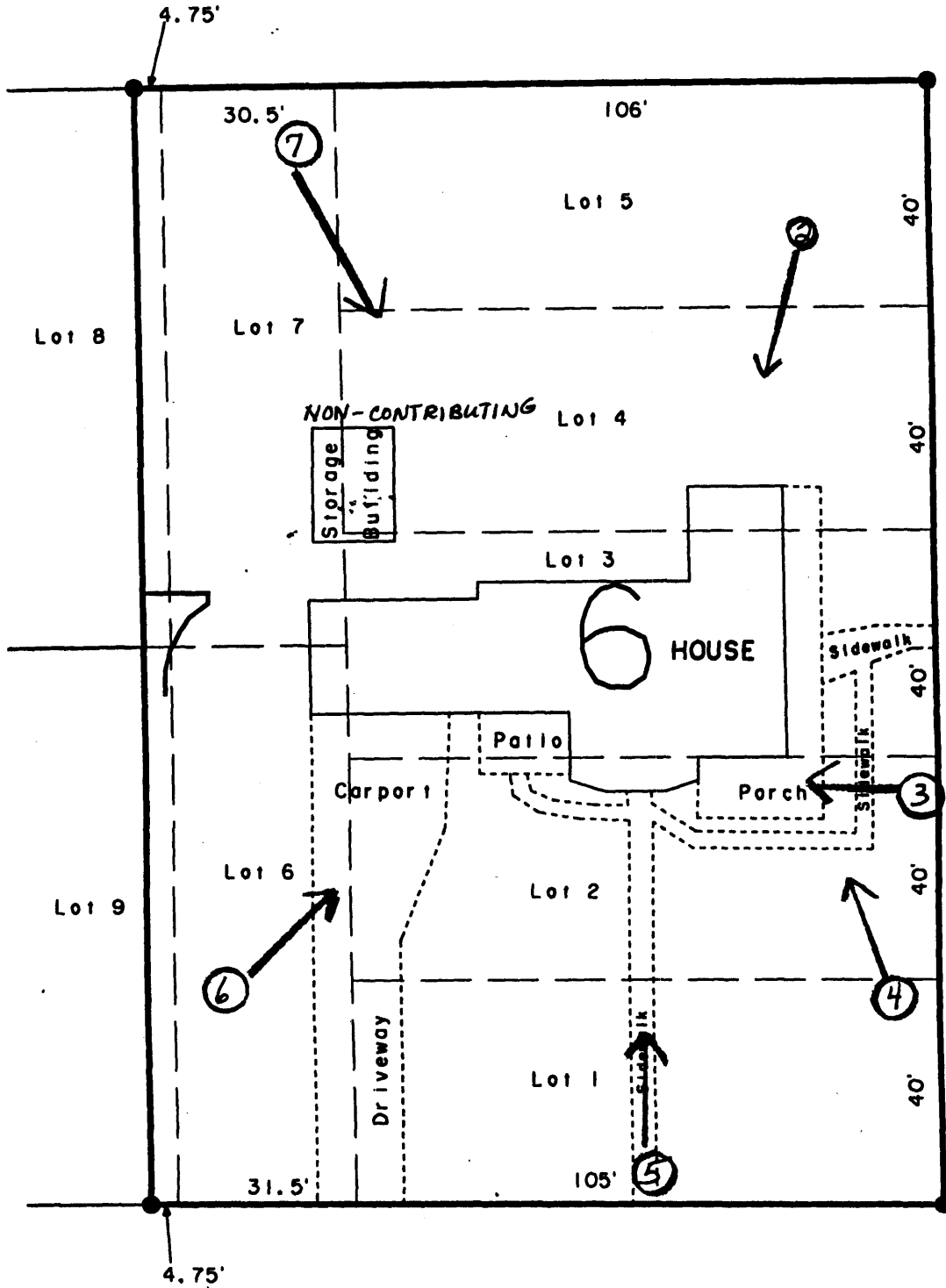
Fontenot, Mary Alice. *Acadia Parish, Louisiana: A History to 1920*. Lafayette, Louisiana:
Acadiana Press, 1979.

Sonnier, William. "History of Public Education in Acadia Parish, Louisiana." Masters
thesis, Louisiana State University, 1936.

Boundary Description: See attached property plat map.

Justification: Boundaries follow property lines of parcel of land upon which nominated
resource is located.

Blanche Avenue



LeBlanc Street

210

Morris Avenue

Ellis Hoffpauir House
Acadia Parish, LA