



Preston - LaFreniere Farm
Bolton, Chittenden County, Vermont

Credit: Paul A. Graney

Date: 4/1/1998

Negative at VT Division for Historic Preservation

View looking SE, buildings #2 and 3 to left,
house (#1) to right, Camel's Hump to rear

photo 1 of 7

#Y-1



Preston - LaFreniere Farm
Bolton, Chittenden County, Vermont
Credit: Paul A. Graney

Date: 4/1/1998

Negative at VT Division for
Historic Preservation

View looking SW of front and east
side of house (building #1)

Photo 2 of 7

#V-7

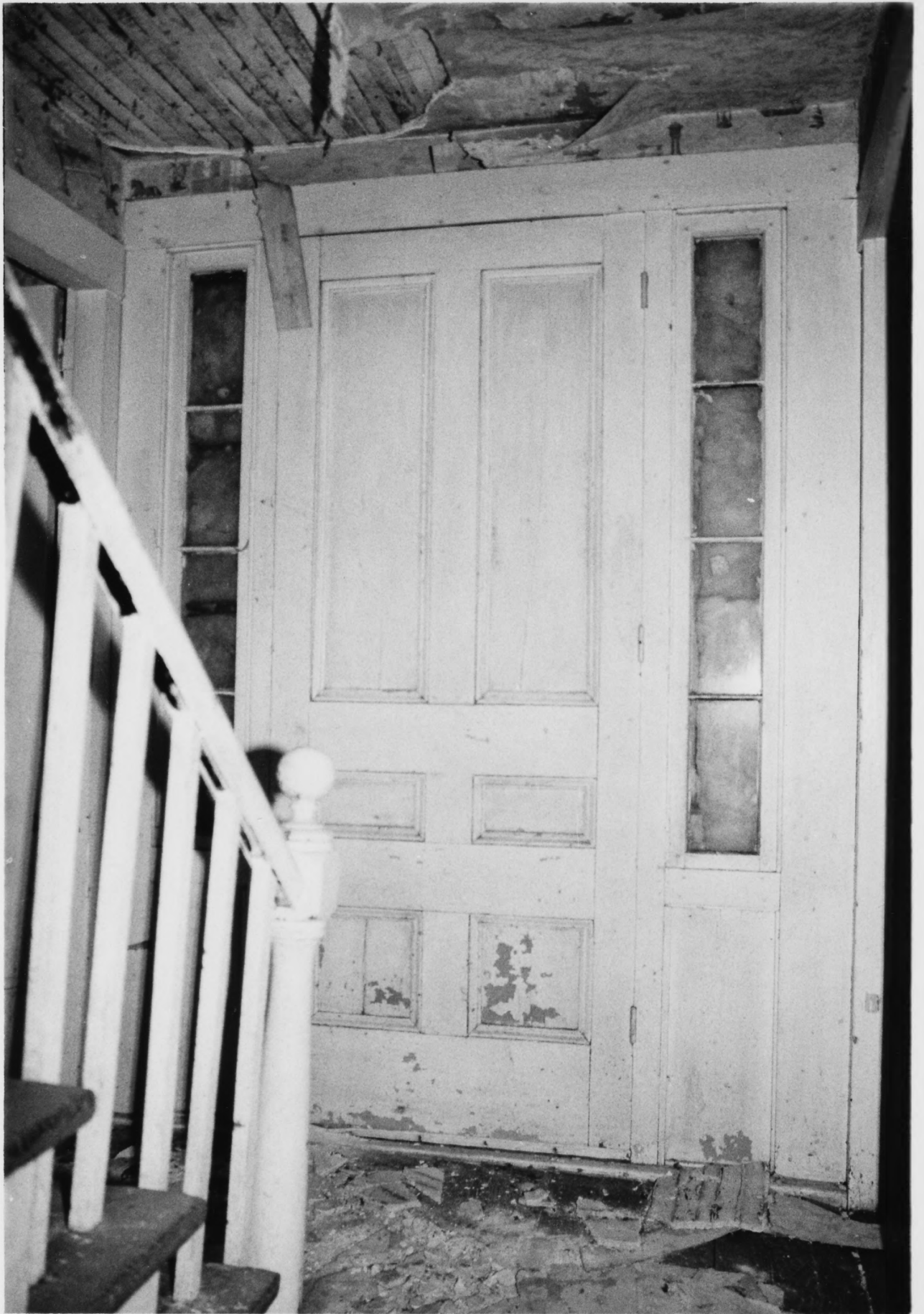


Preston - LaFrenière Farm
Bolton, Chittenden County, Vermont
Credit: Paul A. Graney
Date: 4/1/1998

#J-8

Negative at VT Division for
Historic Preservation

View looking NE of back and
west sides of house (#1)
Photo 3 of 7



Preston - LaFreniere Farm
Bolton, Chittenden County, Vermont

Credit: Paul A. Graney

Date: 4/1/1998

Negative at VT Division for
Historic Preservation

Interior view of house front door,
looking NE

photo 4 of 7

#Y-18



Preston - La Freniere Farm
Bolton, Chittenden County, Vermont

Credit: Paul A. Graney

Date: 4/11-1998

Negative at VT Division for Historic Preservation

View looking NE, barns (#2 and #3)

Photo 5 of 7

#J-9



Preston - Lafreniere Farm
Bolton, Chittenden County, Vermont

Credit: Paul A. Graney

Date: April 1, 1998

Negative at VT Division for Historic Preservation

Description: View looking E, English barn (c. 1820, # 2)

Photo. 6 of 7

#Y-11



Preston - LaFreniere Farm
Bolton, Chittenden County, Vermont

Credit: Paul A. Graney

Date: 4/1/1998

Negative at VT Division for Historic Preservation
View looking NW at building #3

Photo. 7 of 7

#Y-3