



Pioneer Mine Buildings and "A"  
Headframe

Ely, Minnesota

Michael Karni

June 1978

Minnesota Historical Society, 690

Cedar Street, St. Paul, MN 55101

Shaft house, "A" headframe and  
water tower behind

3A/02508

JUL 10 1978

NOTICE: This material may be protected  
by copyright law (Title 17 U. S. Code).

02508  
32

NOV 28 1978



Pioneer Mine Buildings and "A"  
Headframe  
Ely, Minnesota  
Ely-Winton Historical Society  
June 1978  
Ely-Winton Historical Society, 417 E.  
Chapman St., Ely, MN 55731  
Miner's dry house

JUL 10 1978

NOV 28 1978

Miner's "Dry"

Building contained lockers, showers etc.  
Used for changing into working clothes -



Pioneer Mine Buildings and "A"  
Headframe

Ely, Minnesota

Ely-Winton Historical Society

June 1978

Ely-Winton Historical Society, 417

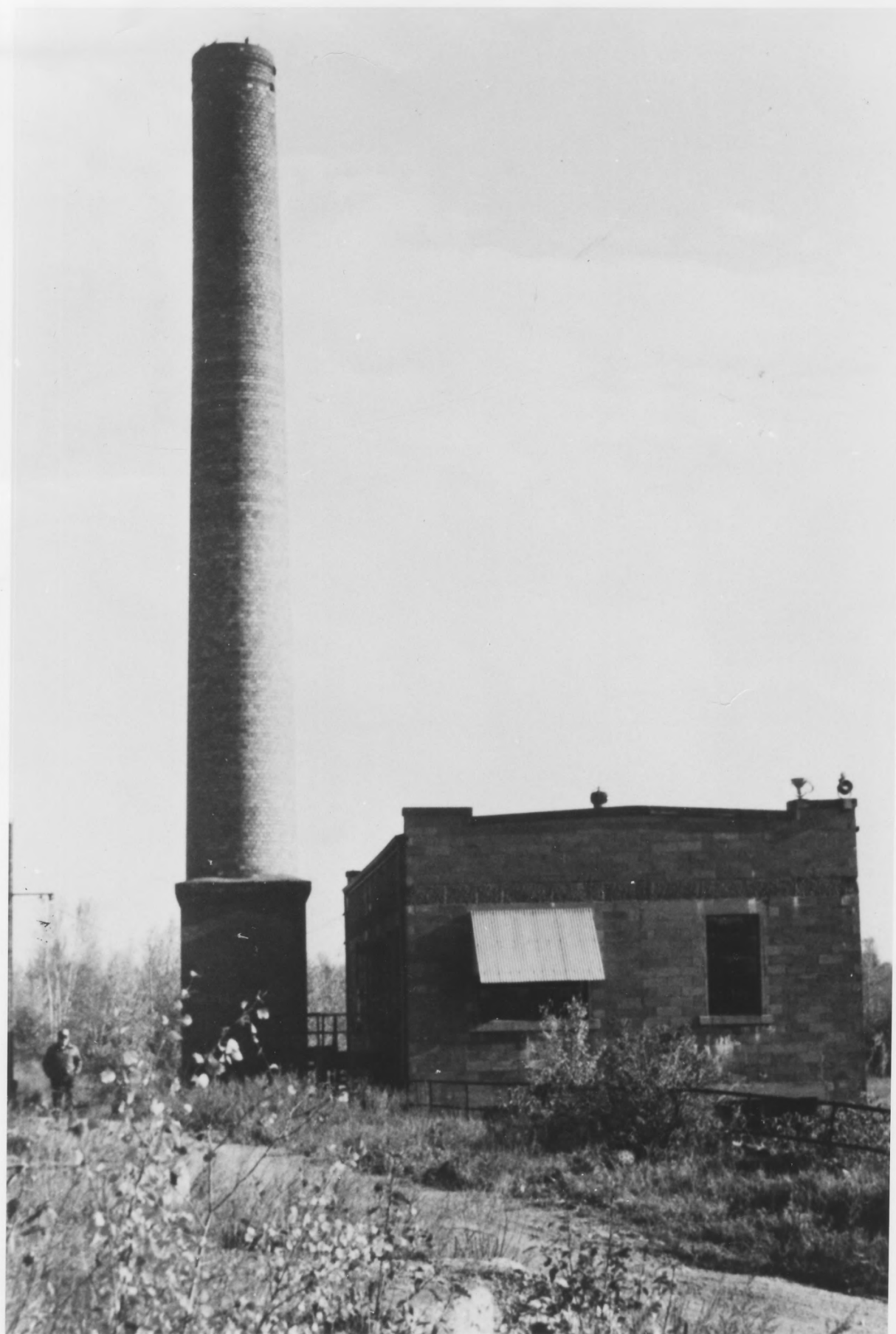
E. Chapman St., Ely, MN 55731

General view of mine buildings and  
headframe. Left to Right: Water  
tank, headframe, engine house smoke  
stack, shop captain's dry house.

NOV 28 1978

JUL 10 1978

*L. to R. Water tank, head frame, engine house  
smoke stack, shop + captain's dry*



NOV 12 1904

Pioneer Mine Buildings and "A"  
Headframe

Ely, Minnesota

Michael Karni

June 1978

Minnesota Historical Society, 690

Cedar Street, St. Paul, MN 55101

Smoke stack and Captain's dry house/  
shop building

2A/02508

NOV 28 1978

JUL 10 1978

NOTICE: This material may be protected  
by copyright law (Title 17 U. S. Code)

02508