



GEORGE S. ABBOTT BUILDING

Waterbury, Connecticut

View: Looking north at apex of building. Note storefront with granite column at r.; integral wall chimney flues access tunnel at left rear.

Photo # 1 Date: 11/9/80

Neg. on file: Conn. Hist Comm.



GEORGE S. ABBOTT BUILDING

Waterbury, Connecticut

View: Site context - looking  
SW. Vacant lot at right is  
location of new addition.  
Note sole roof chimney;  
deep relief of facade.

Photo # 2 Date: 12/5/80  
Neg. on file: Conn. Hist Comm.



GEORGE S. ABBOTT BUILDING

Waterbury, Connecticut

View: From north of building  
looking at rear elevations  
facing due south. Note rear  
porch; the V plan.

Photo # 3                      Date: 12/5/80

Neg. on file: Conn. Hist Comm.





GEORGE S. ABBOTT BUILDING

Waterbury, Connecticut

View: Southeast facade along N.  
Main St. looking northwest.  
Note canted corner at left;  
oriels at right; storefronts

Photo # 4                      Date: 11/9/80

Neg. on file: Conn. Hist Comm.





GEORGE S. ABBOTT BUILDING

Waterbury, Connecticut

View: Northeasterly elevation of building where new apartment structure will adjoin. Note four story porch at right on rear side wall.

Photo # 5            Date: 11/9/80

Neg. on file: Conn. Hist Comm.



GEORGE S. ABBOTT BUILDING

Waterbury, Connecticut

View: Window detail on first floor, southeast elevation. Illuminates stairway to cellar. Note fine craftsmanship.

Photo # 6 Date: 11/9/80

Neg. on file: Conn. Hist Comm.





GEORGE S. ABBOTT BUILDING

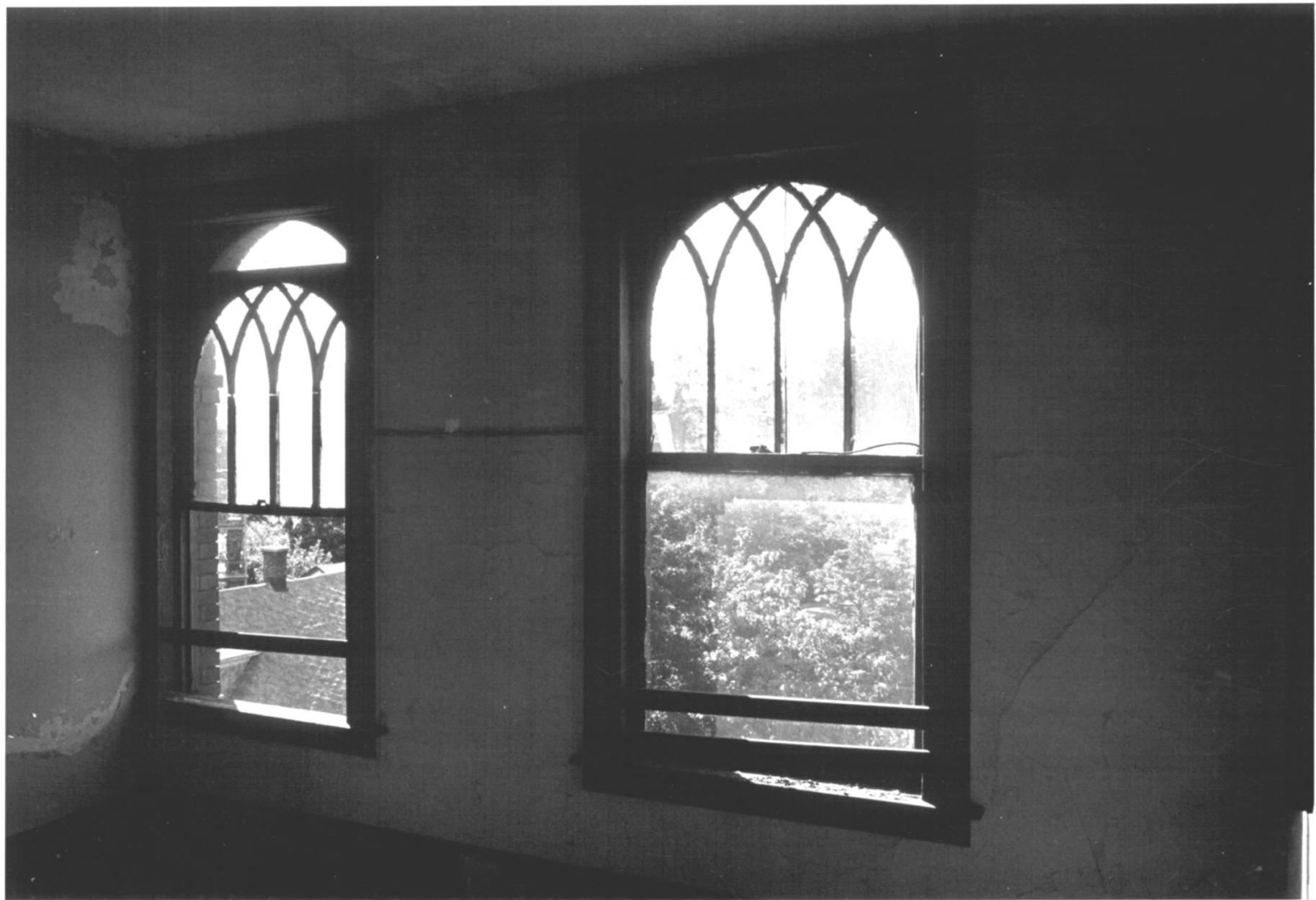
Waterbury, Connecticut

View: West facade/fifth floor  
showing tracery window,  
cornice and wall flue de-  
tails. Note rock-faced  
trim details and unusual  
design in spandrel panels.

Photo # 7 Date: 11/9/80

Neg. on file: Conn. Hist Comm.





GEORGE S. ABBOTT BUILDING

Waterbury, Connecticut

View: Interior detail view of  
tracery windows on fifth  
floor - west facade.

Photo # 8            Date: 11/9/80

Neg. on file: Conn. Hist Comm.



GEORGE S. ABBOTT BUILDING

Waterbury, Connecticut

View: Detail of cornice at SW  
corner of building. Note  
workmanship and rhythm of  
detailing; tile coping.

Photo: # 9      Date: 11/9/80

Neg. on file: Conn. Hist Comm.



GEORGE S. ABBOTT BUILDING

Waterbury, Connecticut

View: (Typical) detail of  
cornice of oriel on  
southeast facade. Note  
dentils and bead and reel  
molding.

Photo # 10            Date: 11/9/80

Neg. on file: Conn. Hist Comm.





GEORGE S. ABBOTT BUILDING

Waterbury, Connecticut

View: Vertical view of skylight above main stair at southwest end, or within the apex of the building.

Photo # 11 Date: 11/9/80

Neg. on file: Conn. Hist Comm.



GEORGE S. ABBOTT BUILDING

Waterbury, Connecticut

View: (Typical) interior view  
of apartment on second flr.  
of west wing. Note simple  
but consistent finishes.

Photo # 12            Date: 11/9/80

Neg. on file: Conn. Hist Comm.



GEORGE S. ABBOTT BUILDING

Waterbury, Connecticut

View: (Typical) view of interior apartment finishes on upper levels of east wing. Building has been vandalized - some finishes remain.

Photo # 13      Date: 11/9/80

Neg. on file: Conn. Hist. Comm.





GEORGE S. ABBOTT BUILDING

Waterbury, Connecticut

View: Interior view of former  
location of Joe's Tire  
Shop in one of the store-  
fronts along N. Main St.  
Typical condition, finish  
and configuration of all.

Photo # 14 Date: 11/9/80

Neg. on file: Conn. Hist. Comm.