



FREDERICK AYER MANSION

Boston, Massachusetts

South elevation

Photo by Leslie Donovan, 9/02 or 3/03



FREDERICK AYER MANSION

Boston, Massachusetts

Main entrance

Photo by Leslie Donovan, 9/02 or 3/03

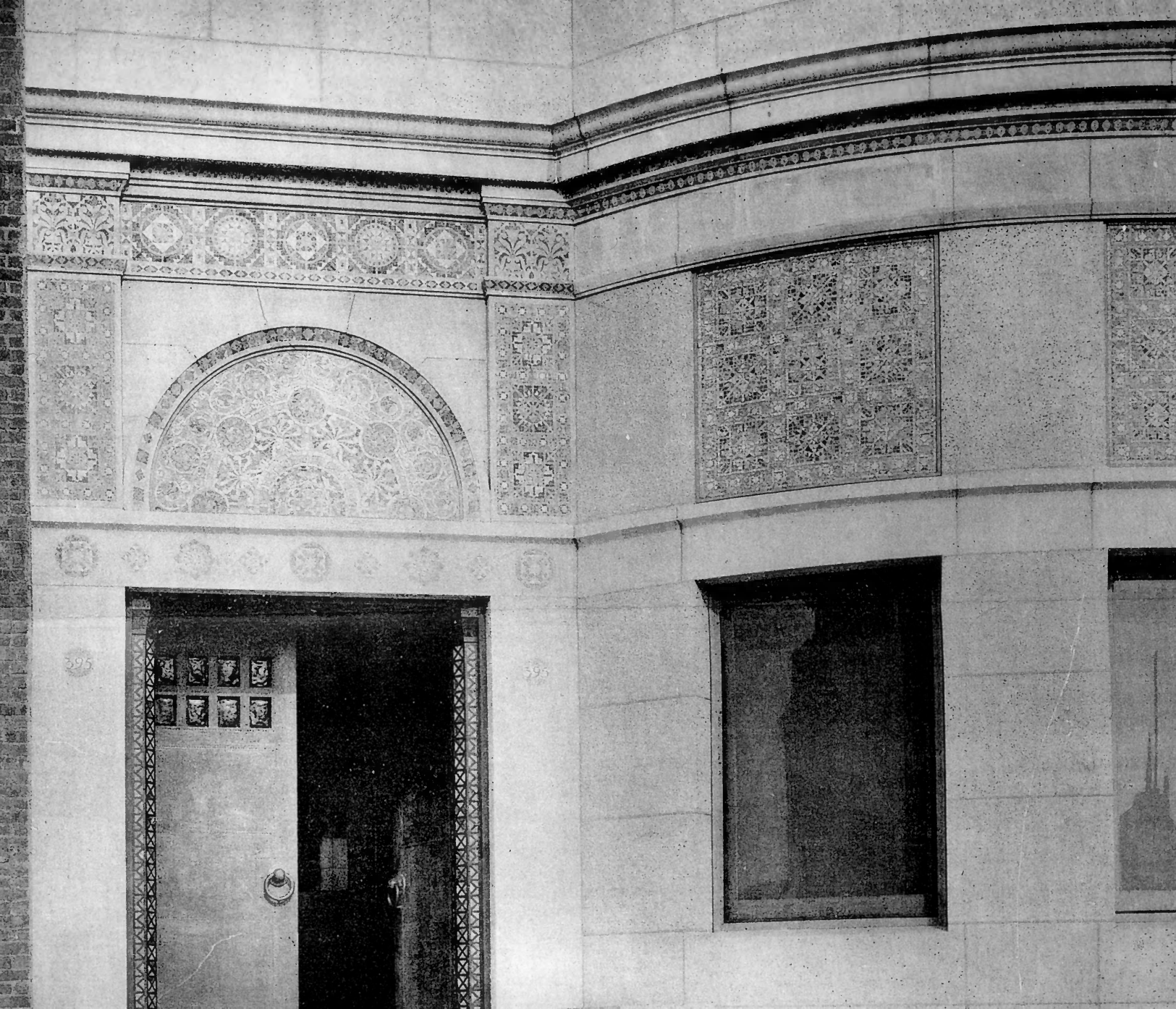


FREDERICK AYER MANSION
Boston, Massachusetts
Detail of mosaic ornamentation
Photo by Leslie Donovan, 9/02 or 3/03



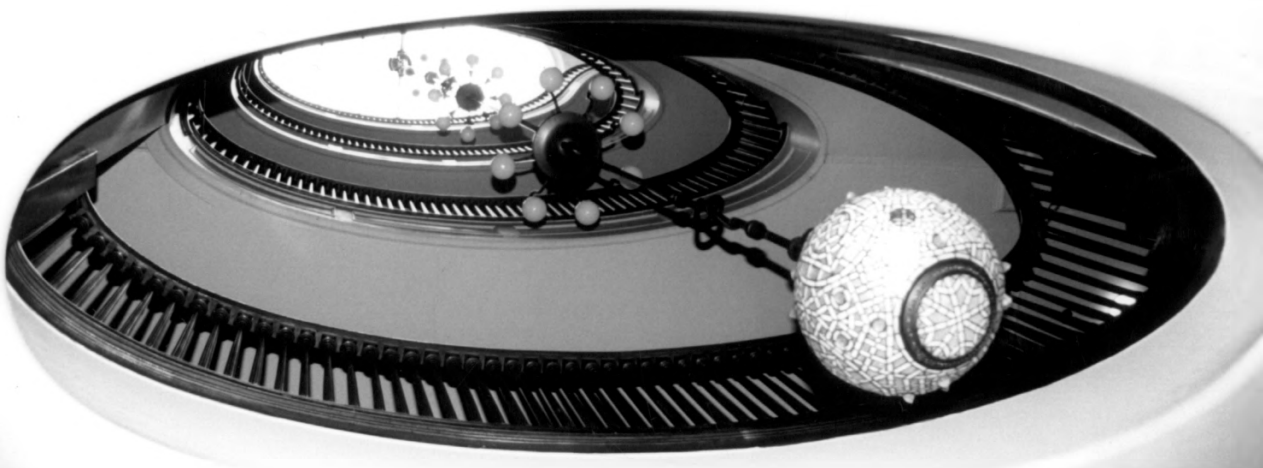
FREDERICK AYER MANSION
Boston, Massachusetts
North (rear) and west elevations
Photo by Leslie Donovan, 9/02 or 3/03





395

395



FREDERICK AYER MANSION

395 COMMONWEALTH AVS.

BOSTON, MA PHOTO 10



FREDERICK AYER MANSION

Boston, Massachusetts

Detail of Main entrance

Photo by Leslie Donovan, 9/02 or 3/03



FREDERICK AYER MANSION

Boston, Massachusetts

Stair landing and trompe l'oeil glass mosaic

Photo by Leslie Donovan, 9/02 or 3/03

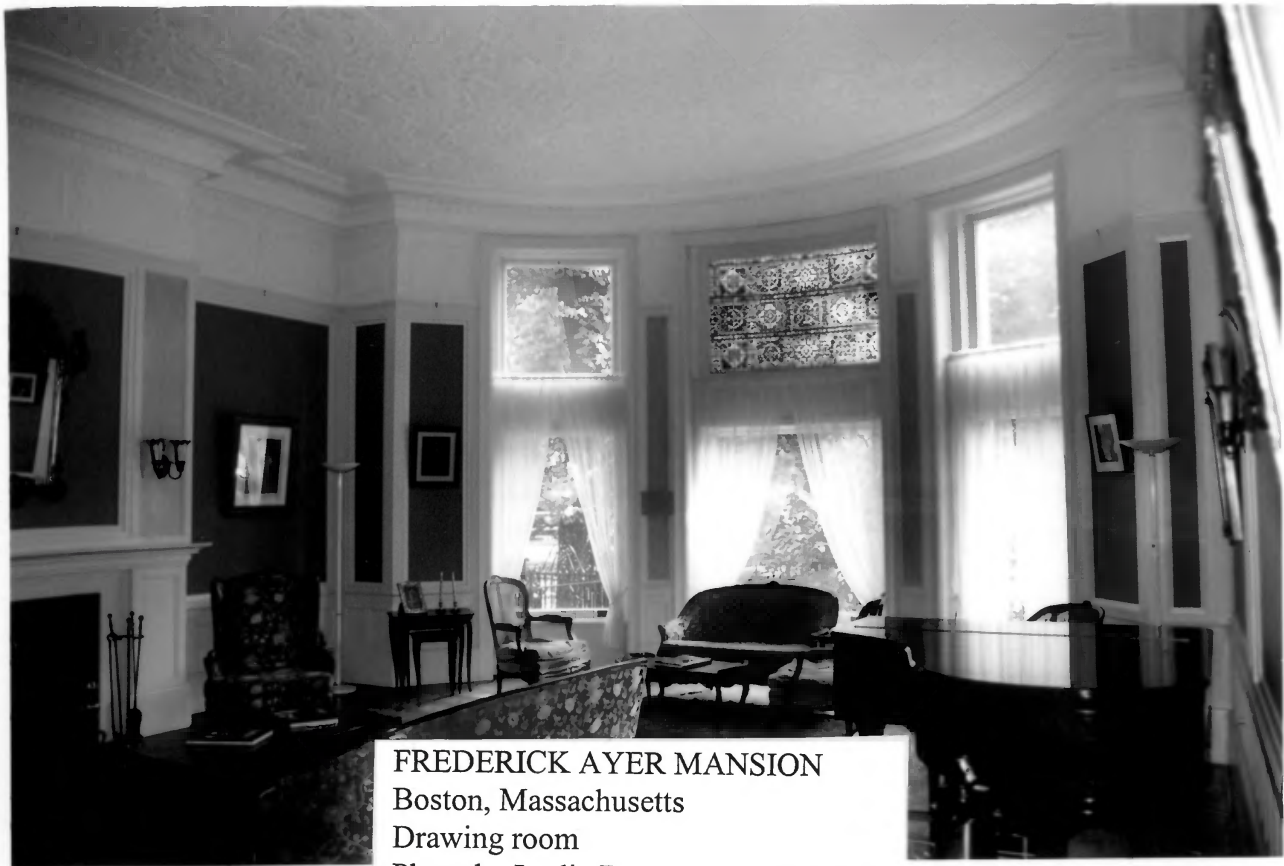


FREDERICK AYER MANSION

Boston, Massachusetts

Elliptical stair and five-stage chandelier

Photo by Leslie Donovan, 9/02 or 3/03

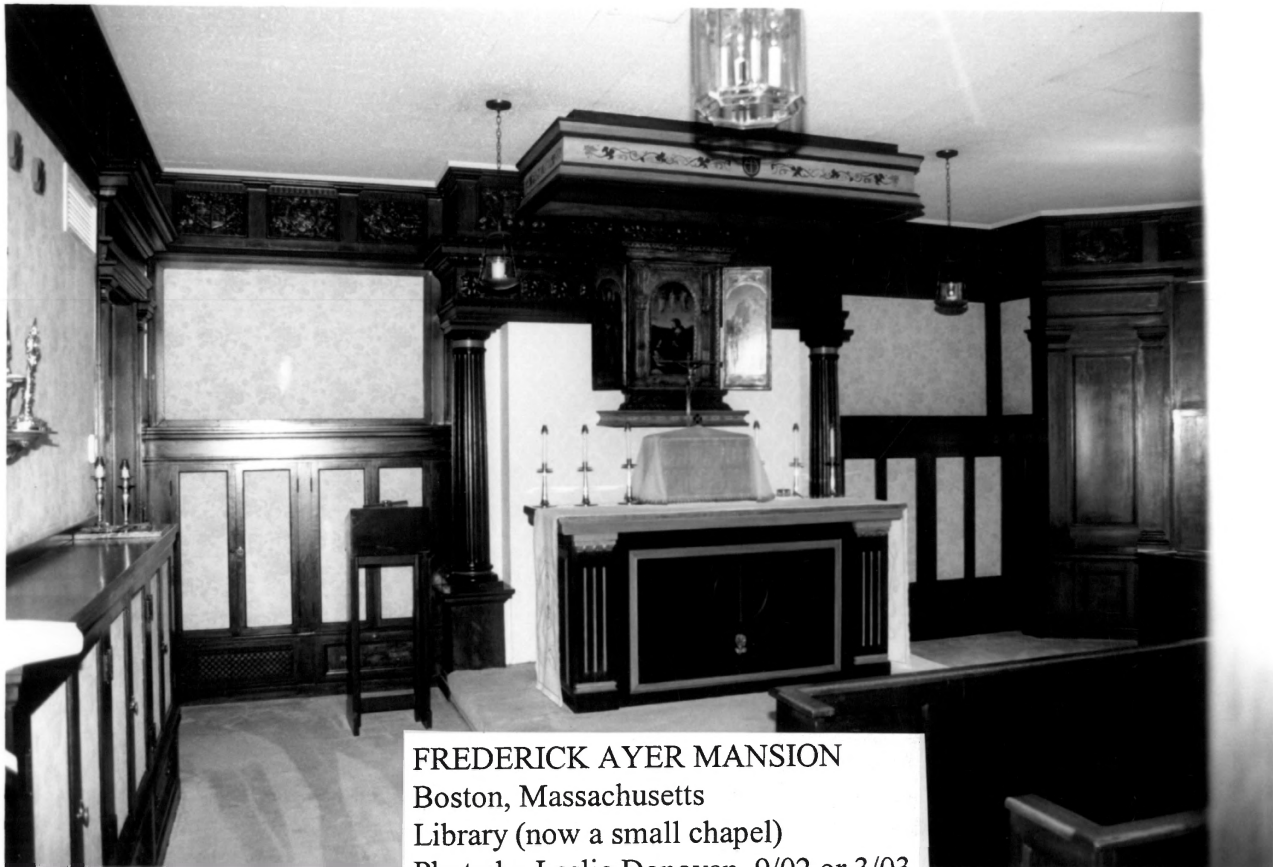


FREDERICK AYER MANSION

Boston, Massachusetts

Drawing room

Photo by Leslie Donovan, 9/02 or 3/03



FREDERICK AYER MANSION
Boston, Massachusetts
Library (now a small chapel)
Photo by Leslie Donovan, 9/02 or 3/03



FREDERICK AYER MANSION
Boston, Massachusetts
Mrs. Ayer's chamber
Photo by Leslie Donovan, 9/02 or 3/03



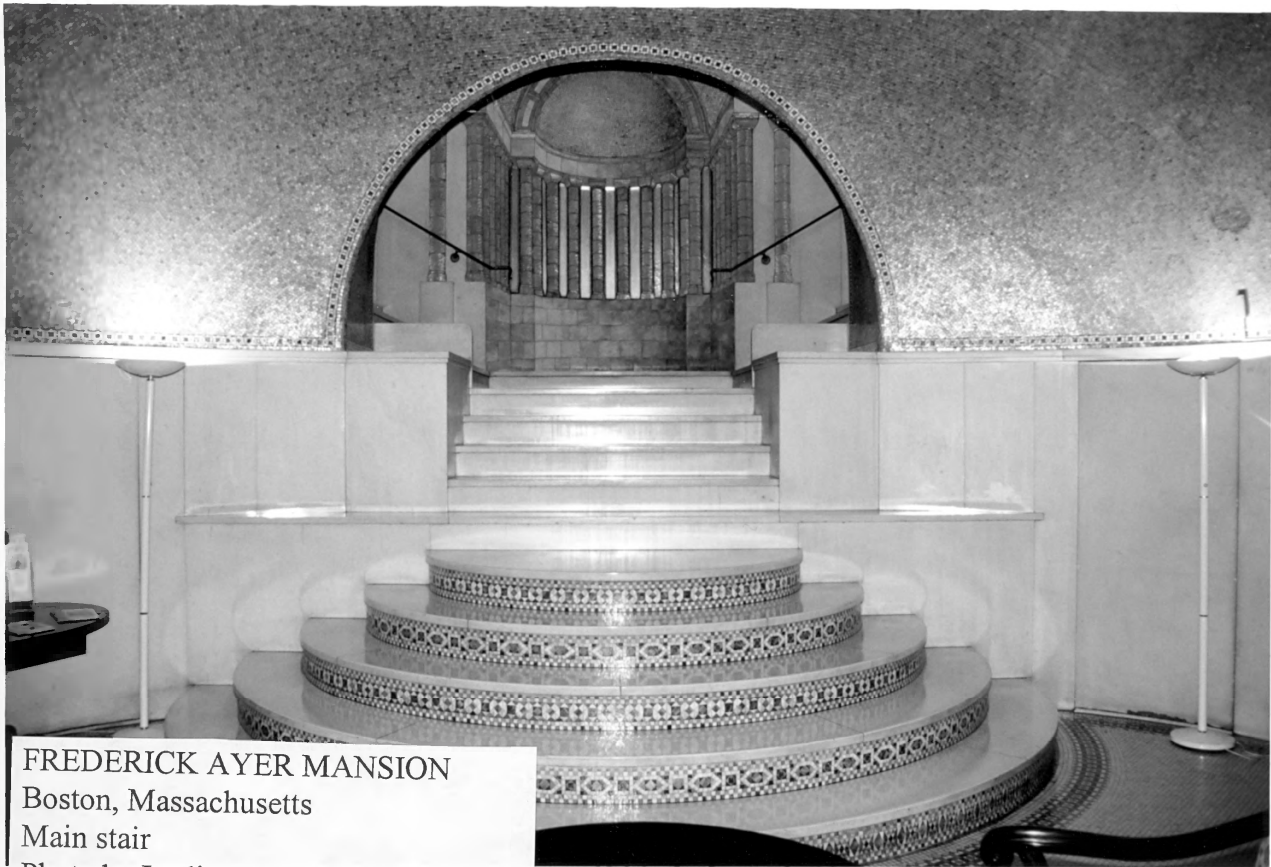
FREDERICK AYER MANSION
Boston, Massachusetts
Marble hall showing apse and stair
Photo by Leslie Donovan, 9/02 or 3/03

FREDERICK AYER MANSION

395 COMMONWEALTH AVENUE

BOSTON, MA

PHOTO 7



FREDERICK AYER MANSION

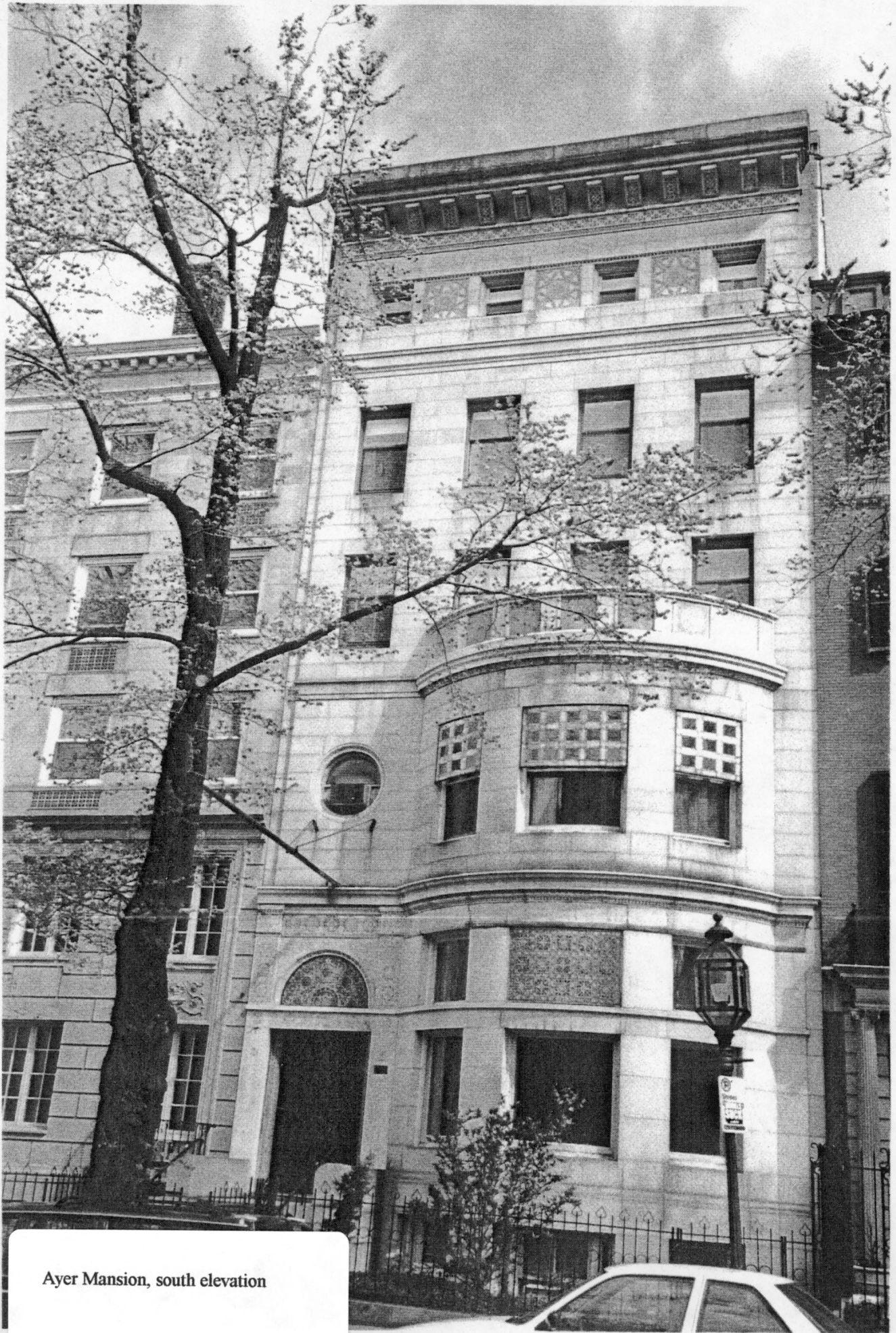
Boston, Massachusetts

Main stair

Photo by Leslie Donovan, 9/02 or 3/03

FREDERICK AYER MANSION
395 COMMONWEALTH AVENUE
BOSTON, MA PHOTO 8

Ayer Mansion
395 Commonwealth Avenue
Boston, MA



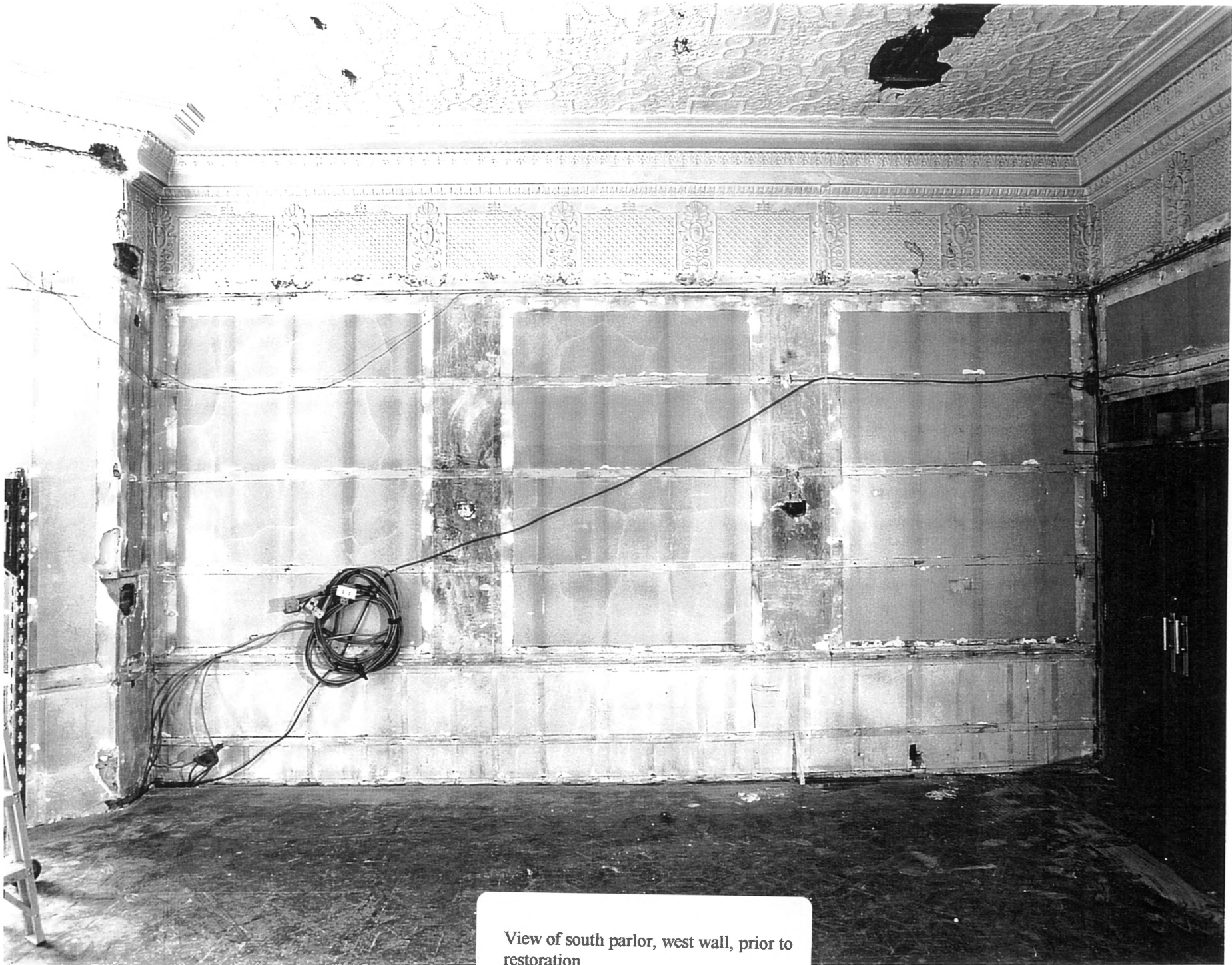
Ayer Mansion, south elevation



View of south parlor, looking south,
prior to restoration.



View of south parlor, east wall, prior to restoration.



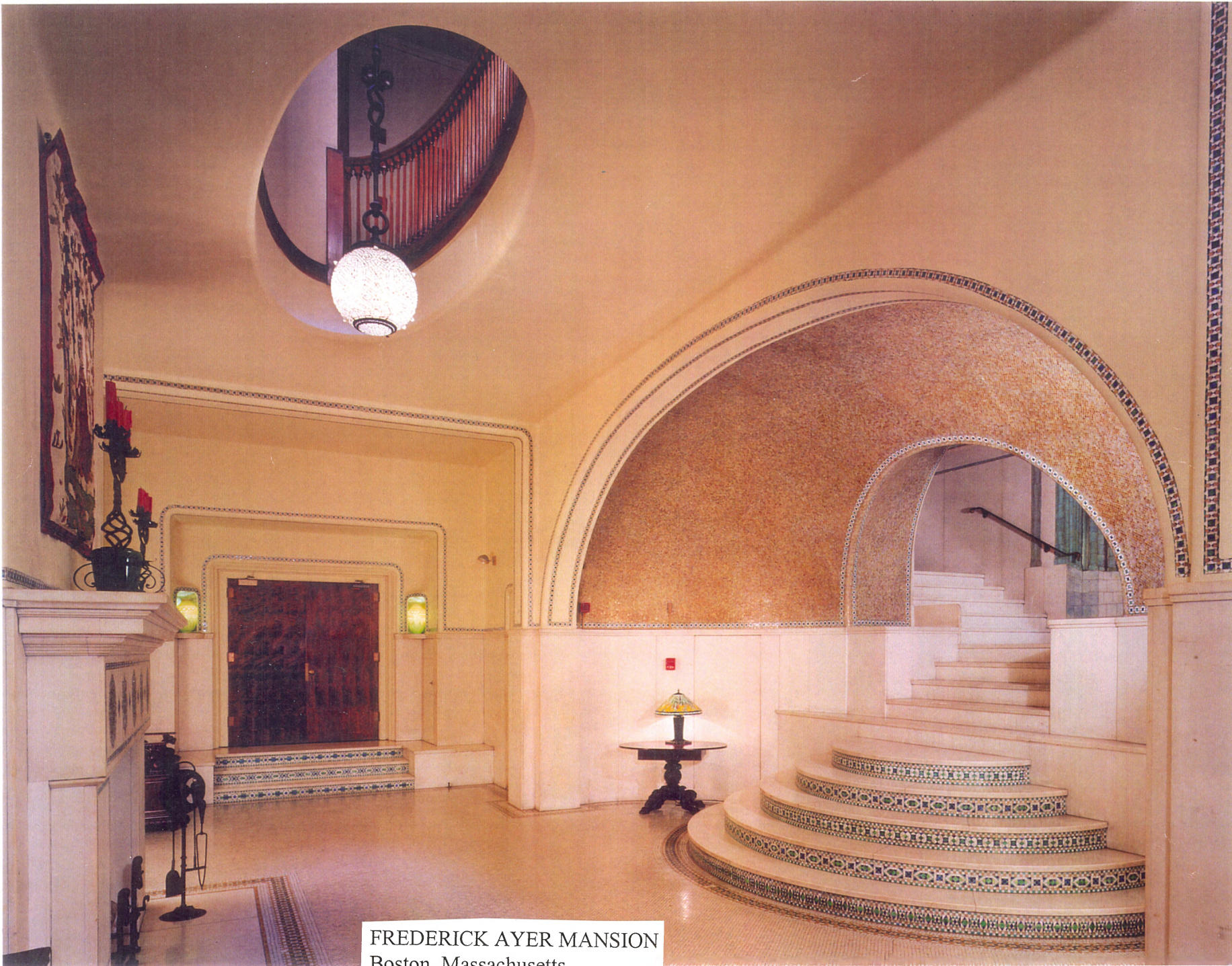
View of south parlor, west wall, prior to restoration.



View of south parlor, looking south with one Tiffany stained glass transom screen in situ.



FREDERICK AYER MANSION
Boston, Massachusetts
East wall of Drawing room
Photo by Richard Cheek



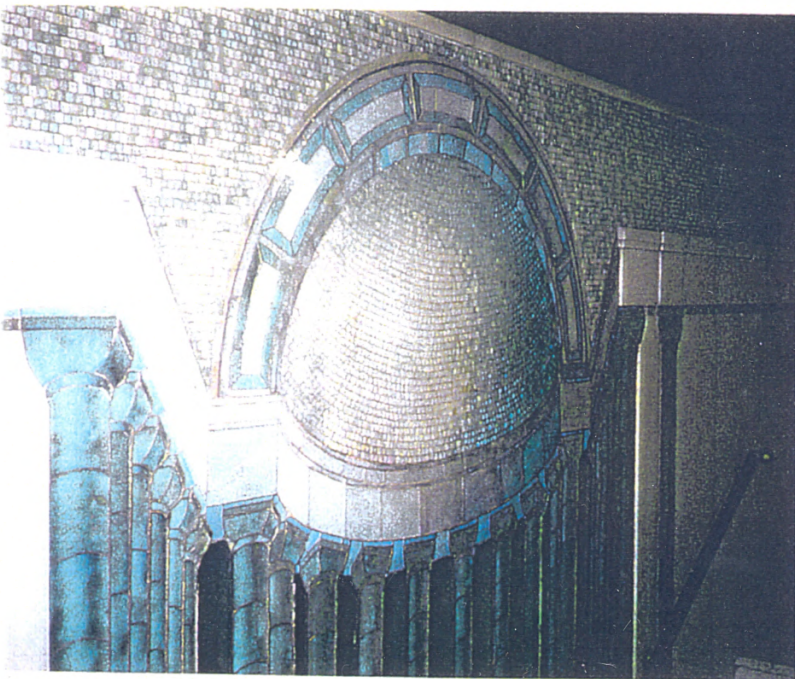
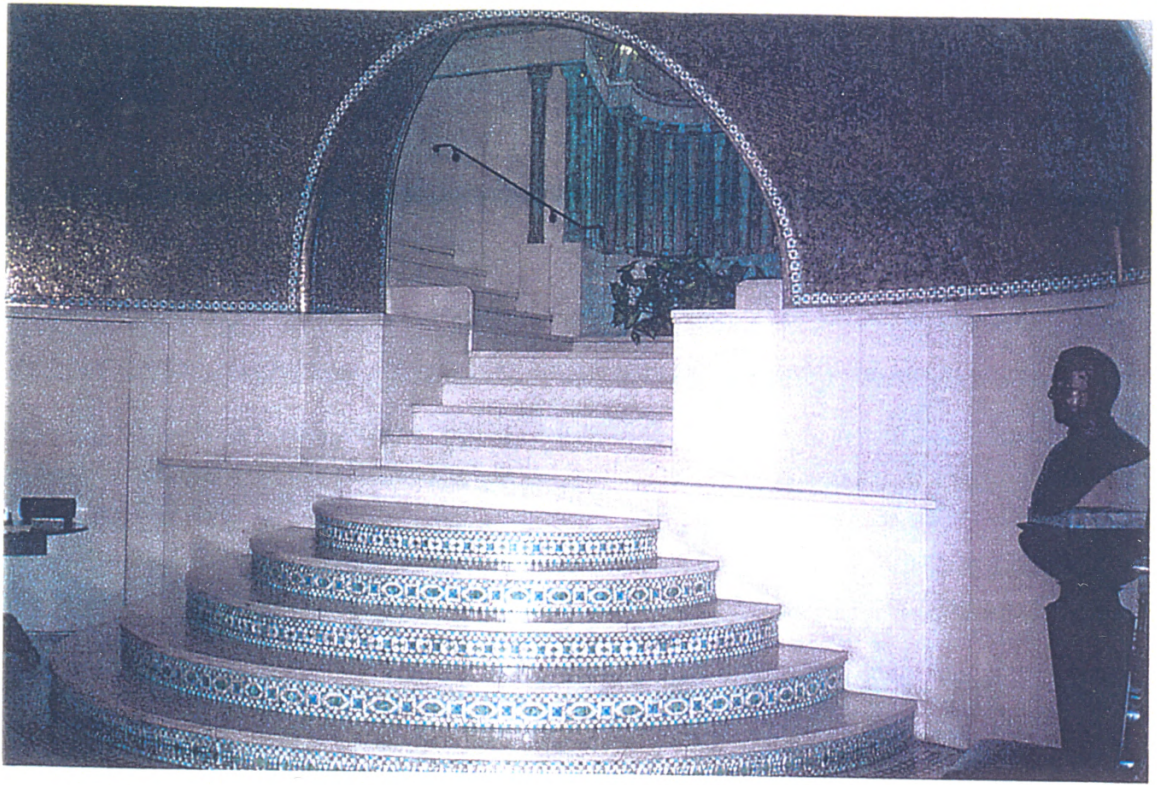
FREDERICK AYER MANSION

Boston, Massachusetts

Entrance hall

Photo by Richard Cheek

photo by Richard Cheek



BAYRIDGE RESIDENCE
Views of staircase from vestibule
to landing under Tiffany skylight



FREDERICK AYER MANSION
Boston, Massachusetts
Detail of entrance hall niche with vase
Photo by Richard Cheek

Ayer Mansion
395 Commonwealth Avenue
Boston, MA



BAYRIDGE RESIDENCE
First Floor Drawing Room
(Closets & Mirror Installed by Previous Owners)

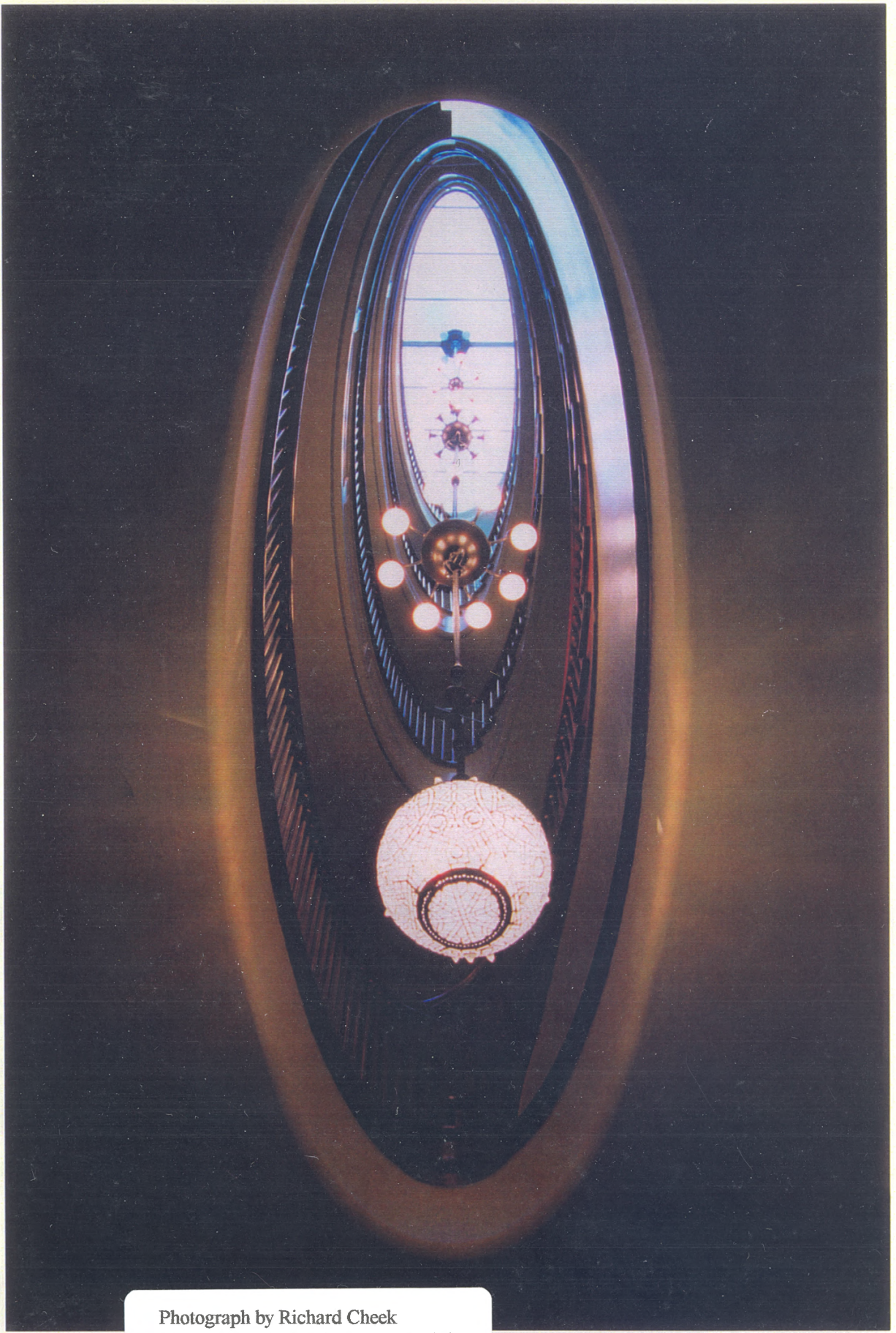


BAYRIDGE RESIDENCE
First Floor Drawing Room
Crown Molding
(Damaged by False Ceiling Placed by Previous Owners)



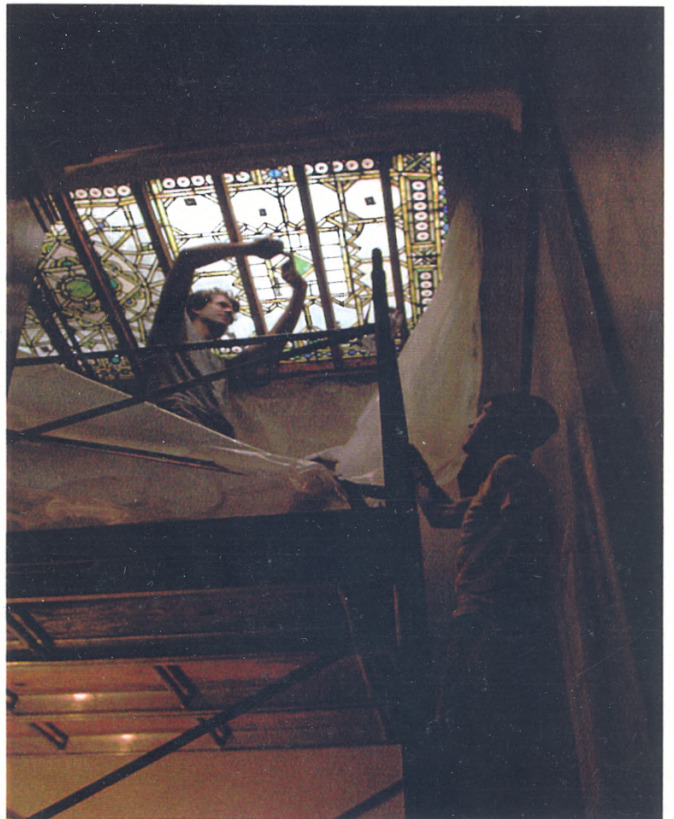
View of south parlor (drawing room)
west wall.

Ayer Mansion
395 Commonwealth Avenue
Boston, MA



Photograph by Richard Cheek
View of elliptical stair lit by a skylight
and a bronze and glass light fixture.

photo by Richard Cheek



Ayer Mansion, Boston, MA - Window Removal

Views of laylight being exposed over landing at main stair.



BAYRIDGE RESIDENCE
First Floor Drawing Room
Original Ceiling, Crown Molding & Frieze
(Covered by False Ceiling Placed by Previous Owners)

