

LAW'S STATION
(LAW'S R.R. MUSEUM)

C

D

E

F

G



P. 10

VICINITY MAP

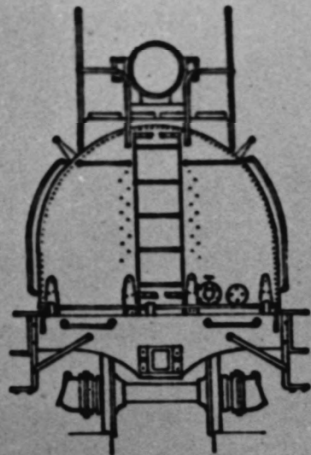
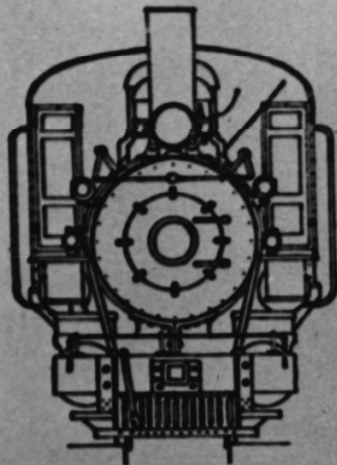
~~1000~~

AUG 18

OCT

1

1981

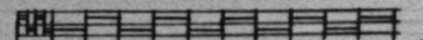


CARSON & COLORADO R.R.

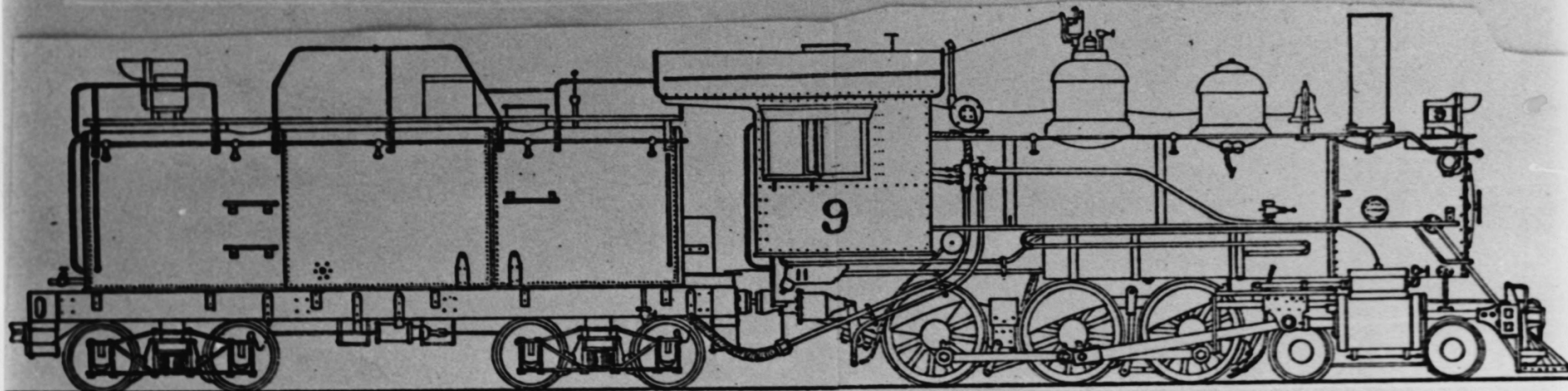
LOCOMOTIVE #9

4-6-0

SCALE



1 0 1 2 3 4 5 6 7 8 9 10'



OCT 1 1981

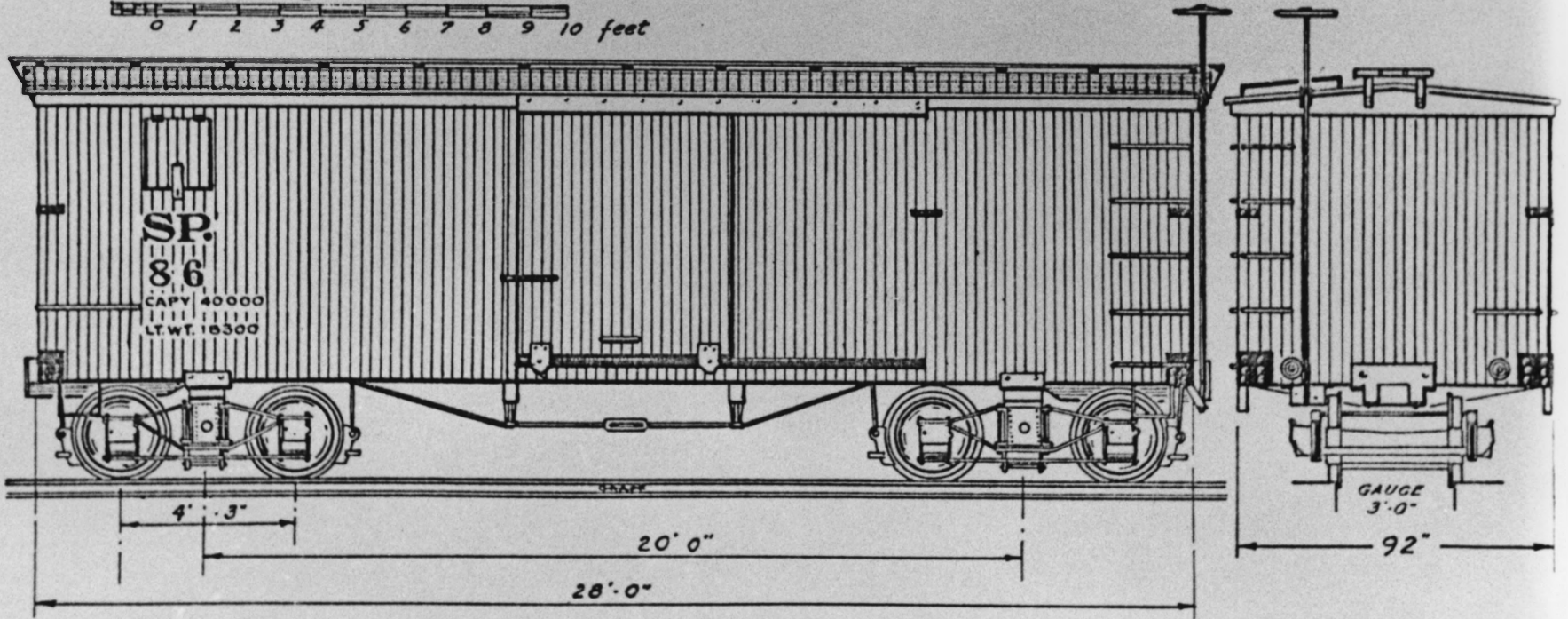
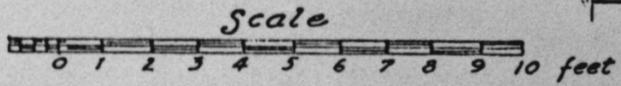
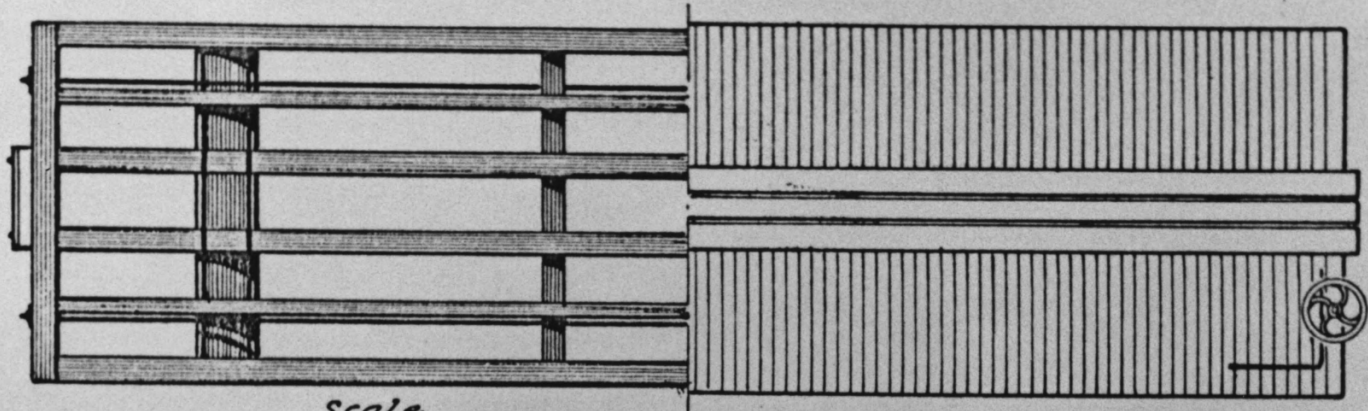
P 58 A

LOCOMOTIVE
MEASUREMENTS

AUG 18 1981

Laws Narrow Gauge RR Historic Dist.

CORNER DOOR BOX CAR



OCT 1 1981

R 58 B

BOX CAR

MEASUREMENTS

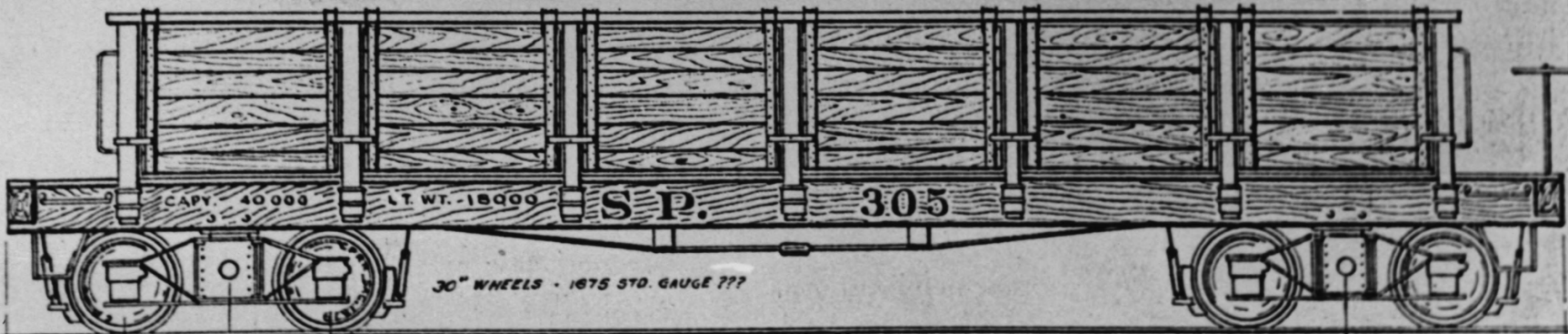
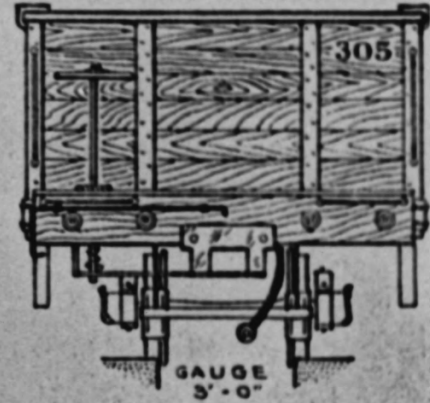
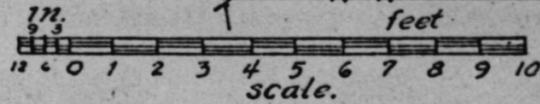
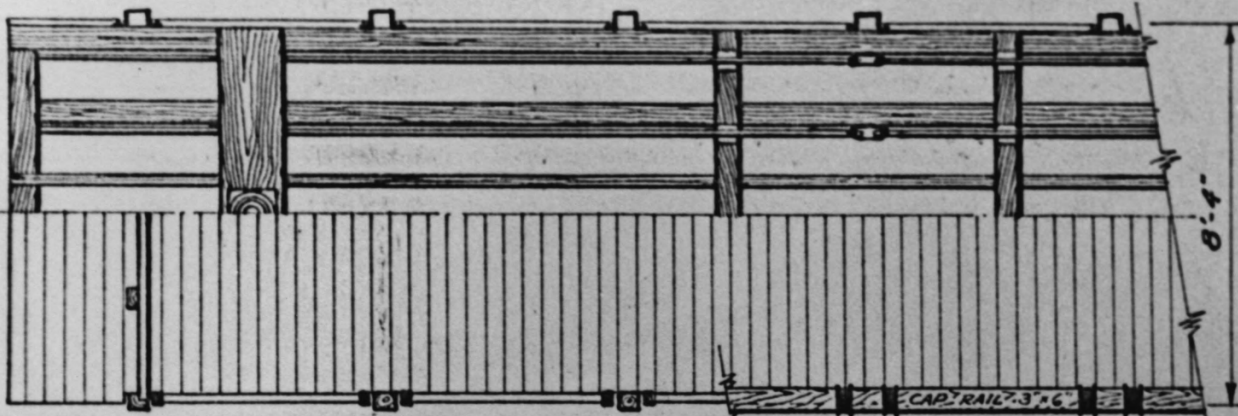
Lans

~~Aug~~
AUG

~~8-18-81~~ RR Historic District

AUG 18 1981

SOUTHERN PACIFIC NARROW GAUGE
40,000 LB. SIDE OPENING GONDOLA



4'-9"

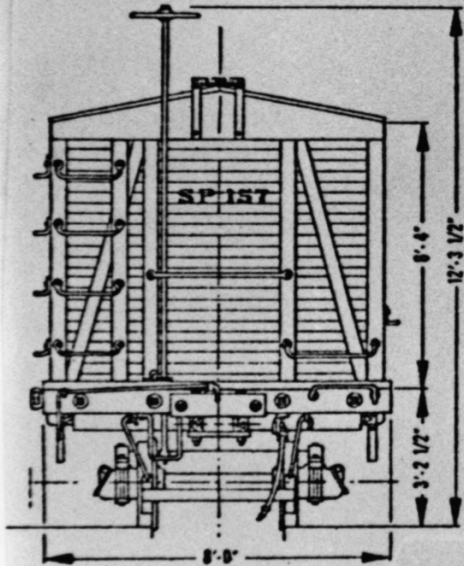
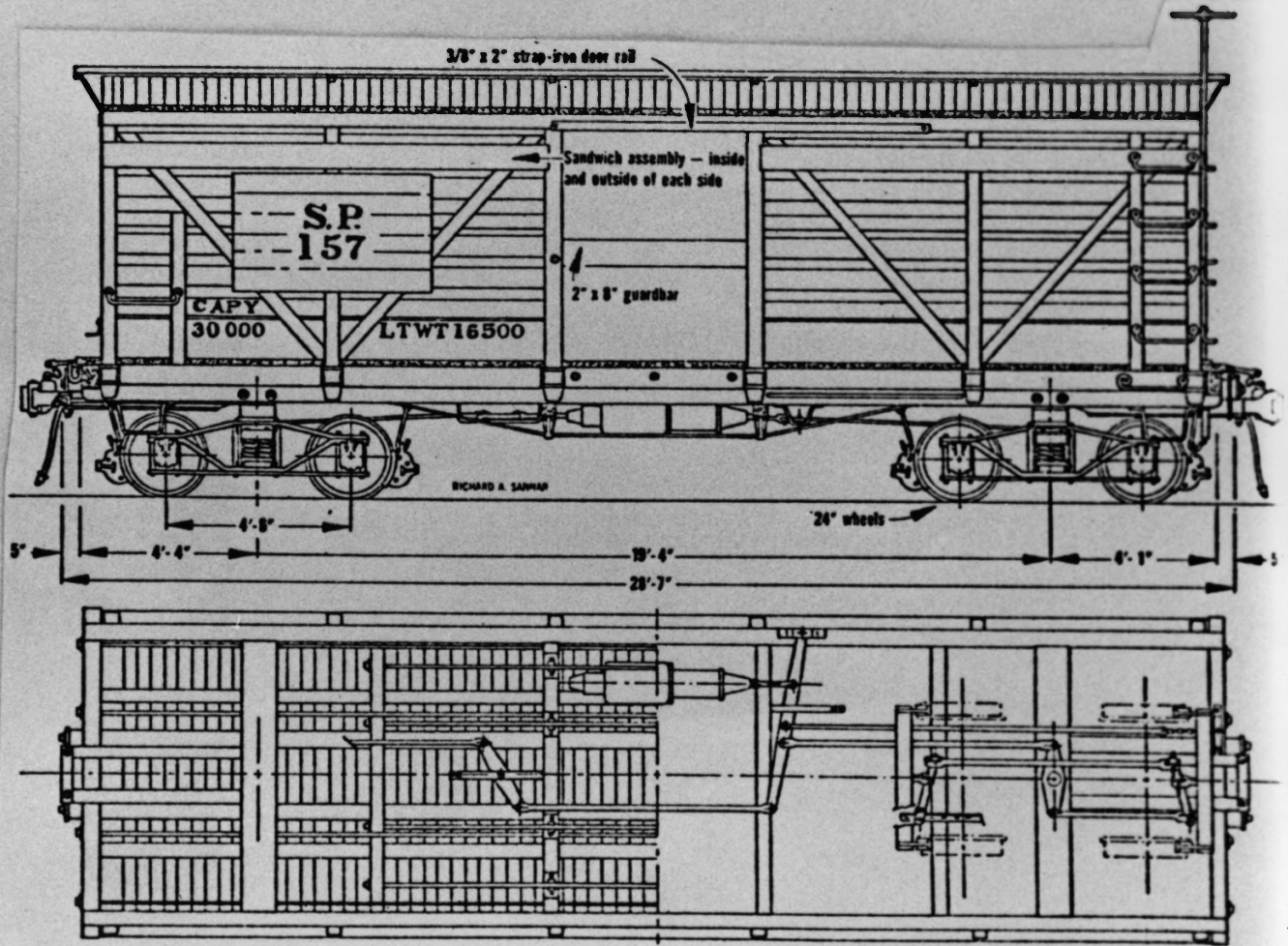
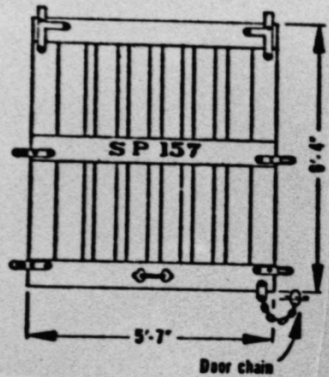
26'-8"

37'-0"

AUG 18 1981 OCT 1 1981
P 5*8 C ORE GONDOLA
MEASUREMENTS

Laws Norms Gauge RR Historic District
Laws, California

SP 3-foot-gauge stockcar



OCT 1 1981

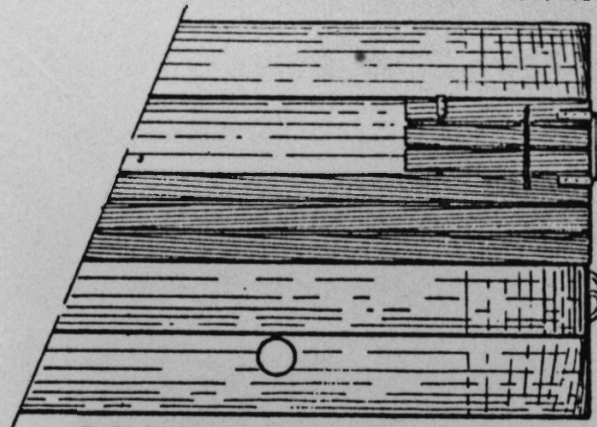
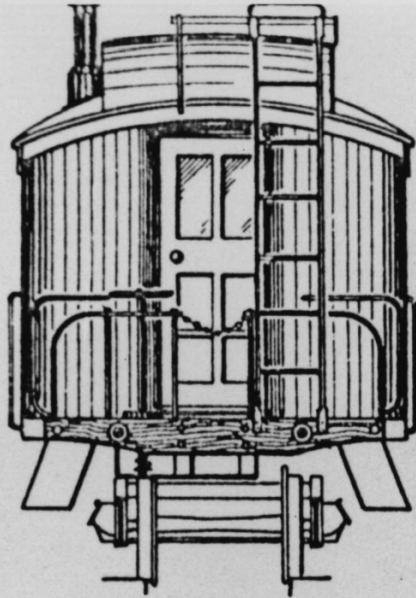
P 58 D CATTLE CAR
MEASUREMENTS

Lang Narnes Gauge RR

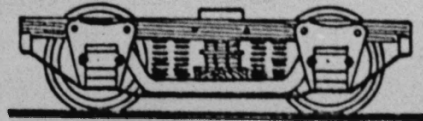
Historic Dist AUG 18 1981

SOUTHERN PACIFIC NARROW GAUGE
CABOOSE 401 AFTER CONVERSION FROM A
COMBINE PRIOR TO ABOUT 1934.

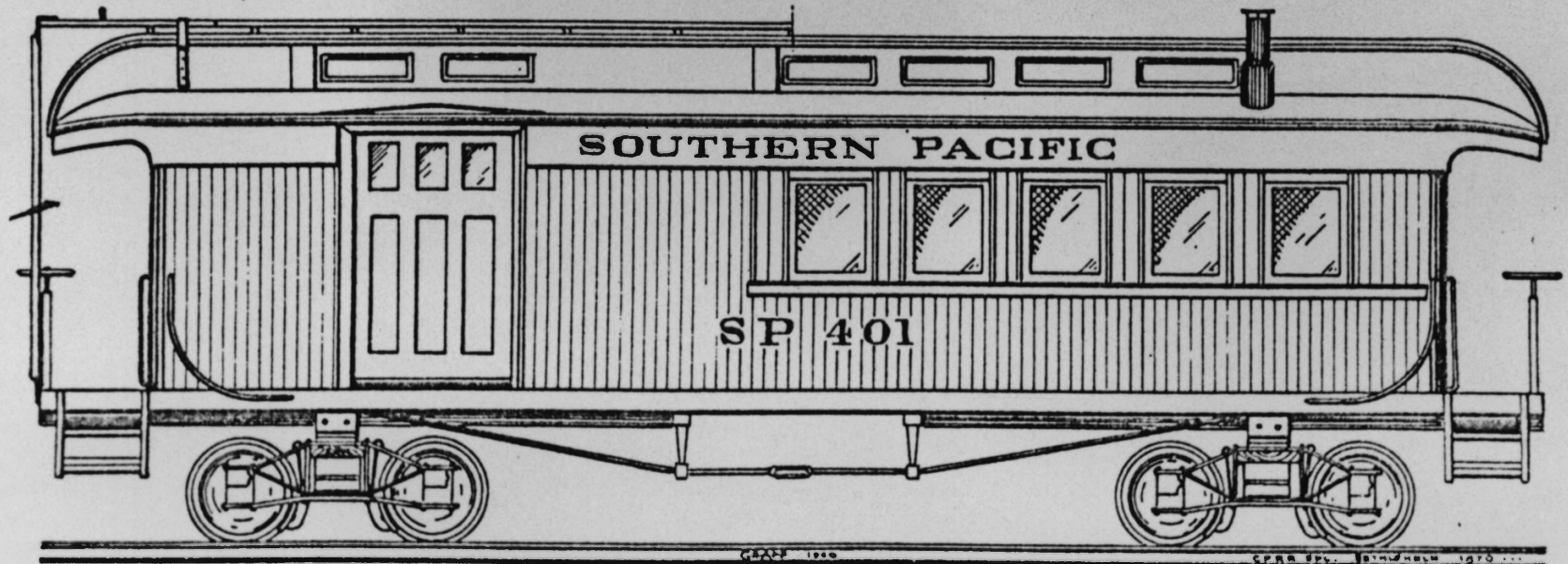
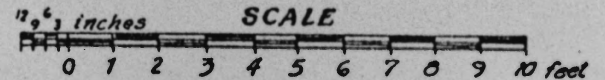
DRAWN BY: U.B. GRAFF



ROOFWALK DETAIL



TYPICAL NARROW GAUGE PASSENGER TRUCK



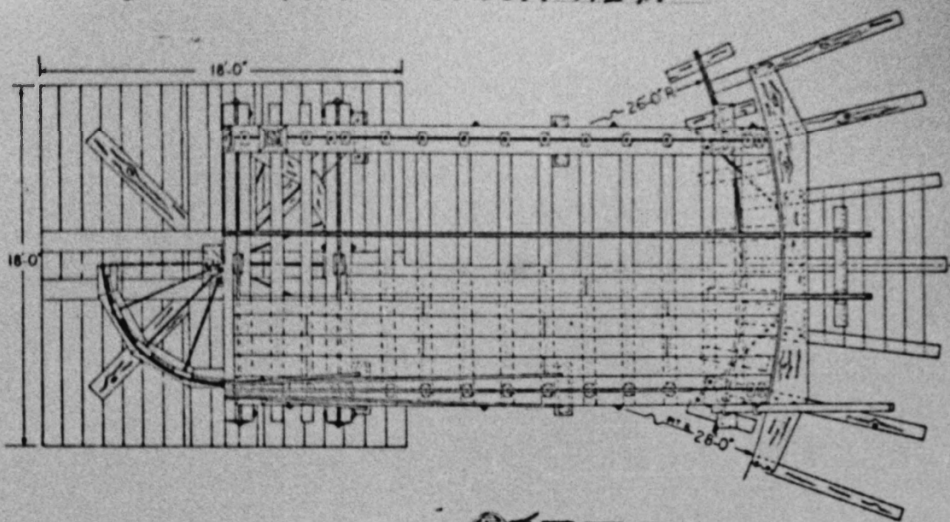
OCT 1 1981

P 58 E CABOOSE
MEASUREMENTS

Lawz Narrow Gauge RR Historic
District

AUG 18 1981

FOUNDATION & BOTTOM VIEW



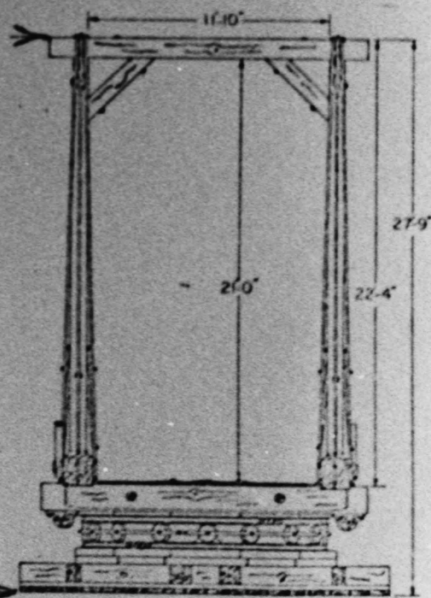
CONT. DRWG. ITEM #7

"ARMSTRONG" TURN TABLE

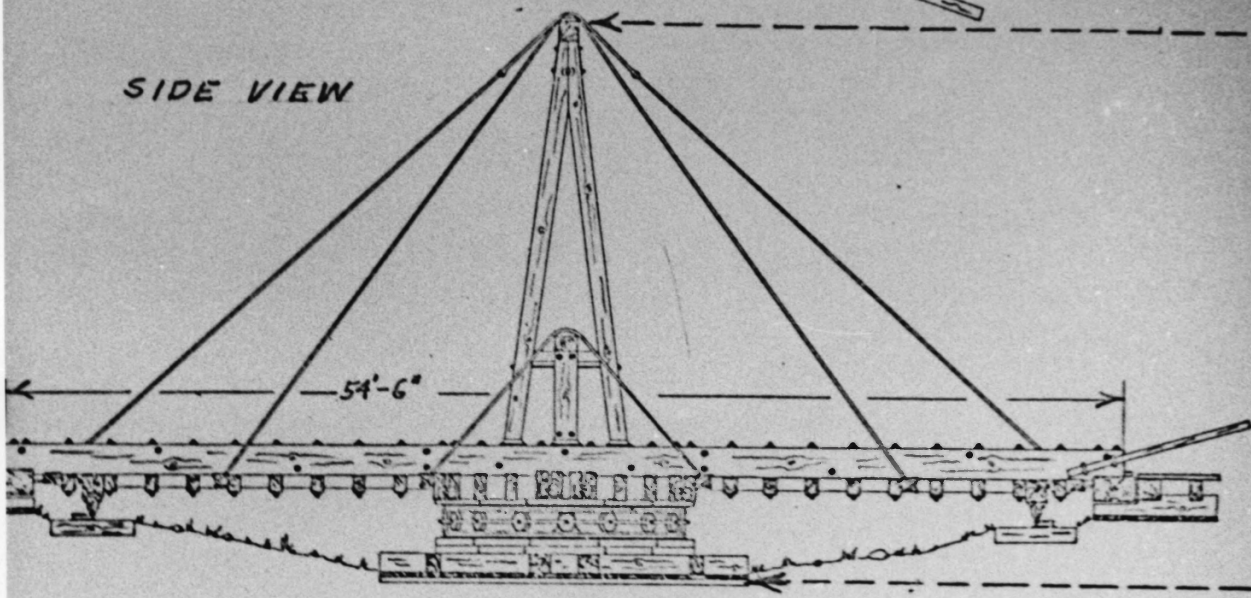
APPROX. SCALE $\frac{1}{8}" = 1'$

MEASUREMENTS SHOWN ARE CORRECT.
THIS DRWG. IS A COPY COURTESY
SOUTHERN PACIFIC RAILROAD CO.

END VIEW



SIDE VIEW



Laws Narrow Gauge RR Historic District

P 120 TURNTABLE

MEASUREMENTS

OCT 1 1981

Laws, California AUG 18 1981



Laws Narrow Gauge RR Historic Photos

AUG 18 1981

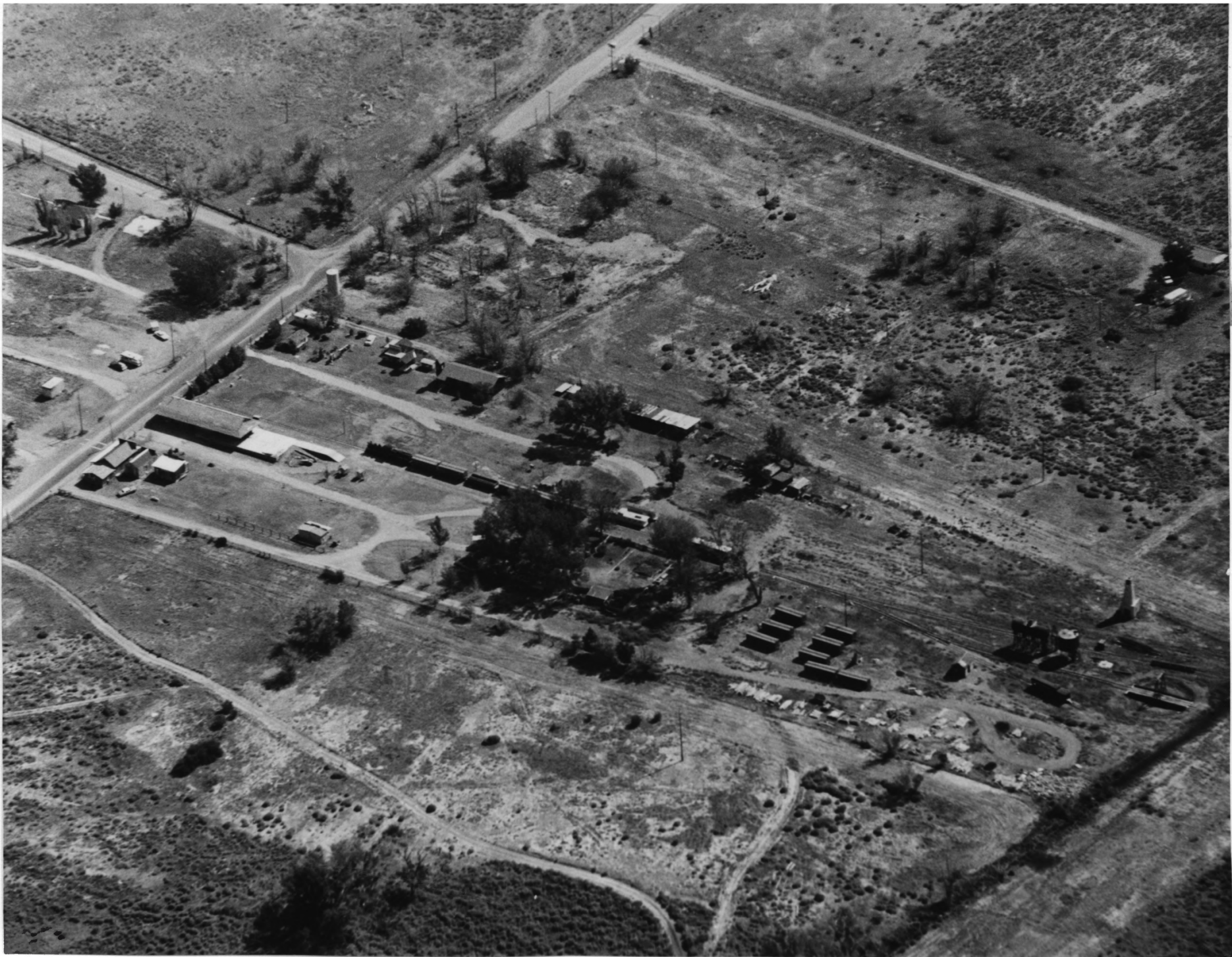
Armstrong Turntable

Showing Roller Detail

RA Dismay 1980

Laws RR Museum

122



Laws Narrow Gauge RR Historic District 4A

LAWS STATION

OCT 1 1981

(Laws Railroad Museum and Historical Site)

Aerial Photograph

AUG 18 1981



Laws Narrow Gauge RR Historic Dist.

Oil Pump House ~~18S~~ 18S ~~1981~~ East

View

RA Dinsmore, 1980

Neg: Laws RR Museum



Lewis Narrow Gauge RR Historic Dist.
Depot -

North East View **AUG 18 1981**

Photo by K. A. Dinsmore

Negative: Lewis RR Museum



Law's RR Abutting District
AUG 1981

Oil Tank Tower - West View

R.A. Dinsmore, 1980

Neg: Law's RR Museum



Laws Narrow Gauge RR Historic District

Agent's House - North East

View

AUG 18 1981

R. A. Dinsmore 1980

Laws RR Museum



Laws Narrow Gauge RR Historic
District

Agent's House ~~AUG 18 1908~~ South West

R.A. Dinsmore View

Neg: Laws RR Museum



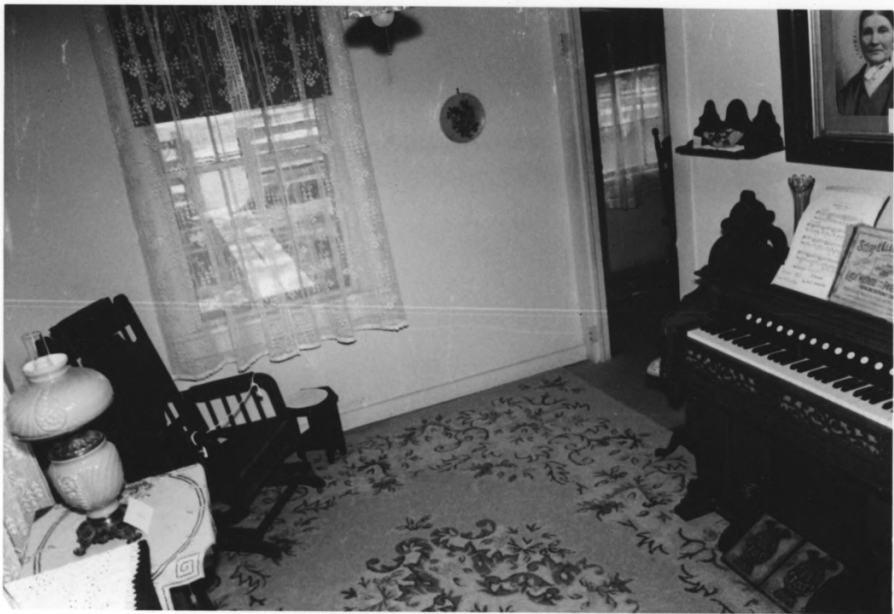
Lans Narrow Gauge RR Historic District

SIX ~~BOX~~ **AUG 18 1981** FOR Future

"Box Car Village" 1 1981

Photos: Rob Dinsmore, 1980

By: Lans RR Museum CT



Lewis Narrow Gauge RR Historical District

Agent's House - Parlor Looking East

RA Nissman, 1980
Lewis RR Museum

AUG 18 1981



Laws Narrow Gauge RR Historic Dist.

R.A. Dinsmore, 1980

Agent's House - North West

Bedroom - Looking West

Negative: AUG 18 1981
Laws RR Museum



Laws Narrow Gauge RR Historic District

R.A. Dinsmore, 1980

Agent's House - Living Room

Looking North AUG 18 1981

Laws RR MUSEUM



Lewis Navas Gorge RR Historic District

Turntable - North East View

RA Drawing, AUG 18, 1981

Wg: Lewis RR Museum



Laws Narrow Gauge RR Historic Dist.

AUG 18 1981

Outhouses - South East View

Photo: R. A. Dinsmore

Negative: Laws RR Museum



Laws Narrow Gauge RR Historic District

Water Pump House - South

West View

RA Dinsmore

AUG 18 1981

Neg: Laws RR Museum



Laws Narrow Gauge RR Historic District

Gondola #339 Steel Plated
Slanted Deck.

Photo: R.A. Dinsmore **AUG 18 1981**
Neg: Laws RR Museum



Law's Narrow Gauge RR Historic District
Whole Train - Engine #9
Box Cars, Gondola, Cattle Car
and Caboose AUG 18 1981

Photo: R. A. Dinkshauer, 1980

Mag: Law: RR Museum



Lawe Narrow Gauge RR Historic District

Aerial photograph showing proposed
National Registry Boundary

OCT 1 1981

Negative: Law RR Museum

AUG 18 1981

Inyo Co, CA.

14.



Laws Narrow Gauge RR Historic District

AUG 18 ~~1981~~ Caboose #401

Photo: R. A. Dinsmore

Use: Laws RR Museum



Laws Narrow Gauge RR Historic District

Death Valley R. R.

Passenger Car

Photo: R.A. Dinsmore **AUG 18 1981**

Ny: Laws RR Museum

SP.
132

CAPY 20000
LT WT 16100



MADE IN U.S.A. APPROX. 1940
BY HANCOCK MFG. CO.
HARTFORD, CONNECTICUT

SP 43 0110 11 11 57
SP

Law's Narrow Gauge RR, Historic Dist.

AUG 18 1981

Box Car #132

Photo: RA Dilsmore, 1980

Neg: Law RR



SP.

17

CAPY 40000
LT WT 18900

SPR 100'-6" 20 20
50

Law's Narrow Gauge RR Historic Dist.

Box Car #17

Photo: R. A. Dinsmore, 1980
Neg: Law RR Museum

AUG 18 1981

S.P.
166

CAPY
WT. 20000

LTWT 17600

SPRINGFIELD, ILL. 1900

Laws Narrow Gauge RR History District

AUG 18 1981

Cattle Car #166

Photo: R.A. Dinsmore, 1980

Neg: Laws RR Museum



CAPY 40000

LWT 21600

SP. 339

SP. 339

Laws Narrow Gauge RR Historical District
AUG 18 1981

Gondola Ore Car #339

Photo: R.A. Dinsmore, 1980

Neg. Laws RR Museum



Leas Narrow Gauge RR Historic District
Water Tower - West View

RA Dinsmore, 1980 AUG 18 1981

Key: Leas RR Museum

STOP
TRAINMEN MUST NOT
RIDE CARS
BEYOND THIS POINT

STOP
TRAINMEN MUST NOT
RIDE CARS
BEYOND THIS POINT

**DO NOT MOVE CARS
UNTIL APRON IS
LACED ON RAMP**

MANHATTAN
REWARD

Laws Narrow Gauge RR Historic Dist.

Depot - Baggage Room

Photo: R.A. Diaw more **AUG 18 1981**

Negative: Laws RR Museum

CARSON & COLORADO RY

7

CAPY 20000
LT WT 18500

W.L. GILBERT & SONS
MILWAUKEE, WIS.
MADE IN U.S.A.

874011 15 37
1910-11

Leas Narrow Gauge RR Historic Dist.

AUG 18 1981
BOX Car #7

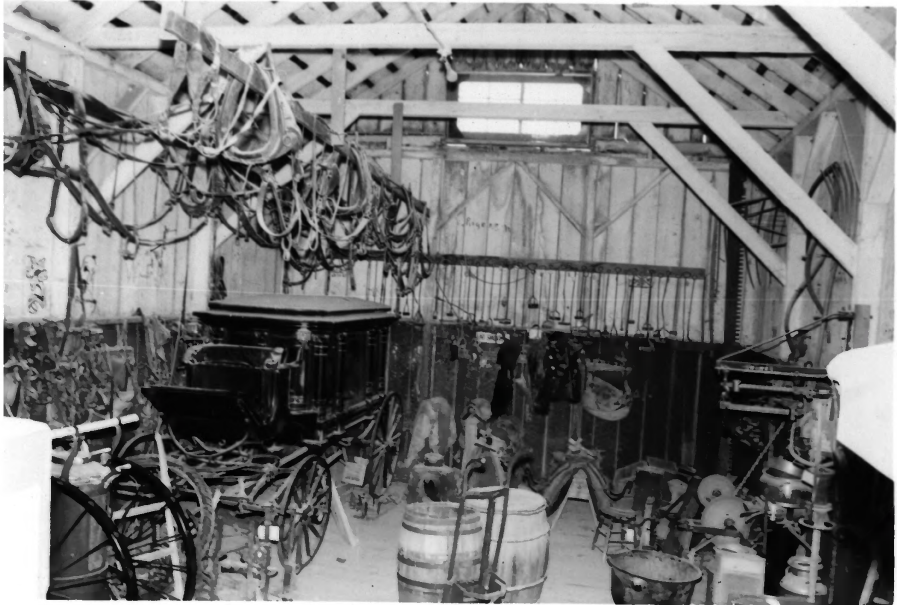
Photo: R. A. Dinsmore 1980

Negative: Leas RR Museum



Laws Narrow Gauge RR Historic District
RA Dinsmore, 1980/Ng: Laws RR Museum

Death Valley Passenger Car
Showing 3' height from rail
to body. **AUG 18 1981**



Laws Narrow Gauge RR Historic Dist.

Depot - Freight Room

Looking South **AUG 18 1981**

Photo: R.A. Dinsmore

Negative: Laws RR Museum



Depot - Laws Narmi Gauge RR Historic
Waiting Room - Desk and District
Antique Teletypewriter ~~18 1981~~

to be removed. **AUG 18 198**

Photo: R. A. Dinsmore

Negative: Laws RR Museum

MONCLA

CENTRAL PACIFIC



Laws Narrow Gauge RR Historic District
Depot - Dispatch & Ticket
Room - Looking North East

Photo by R.A. Dins ~~Aug 18 1981~~

Negative: Laws RR Museum

OWENYO

SOUTHERN

PACIFIC

INSURED FOR
RE STRAIGHT - 100 PERCENT

PLEASE PAY
FOR THE
REPAIRS
AND RENT



THE
SOUTHERN
PACIFIC



Laws Narrow Gauge RR Historic Dist.
Depot - Dispatch & Ticket
Room - Looking South West
Photos by R.A. Dinsmore
Negative: Laws RR Museum



LAWSON

1908

PROPERTY OF THE STATE OF TEXAS
NO PERSONS BEING PERMITTED TO
COLLECT OR TAKE THE
OR TRANSPORT TO THE
VIA EITHER OF THE LAWS

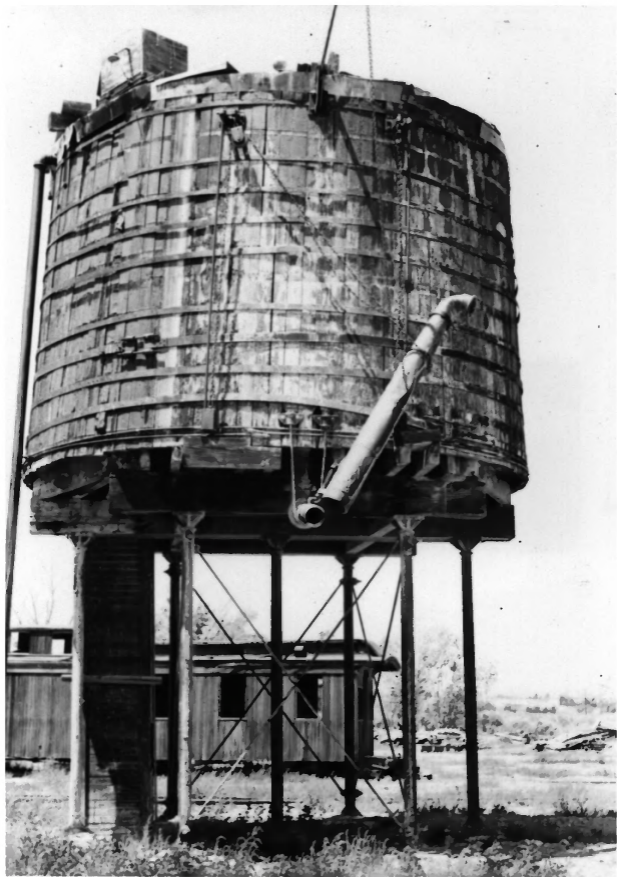
Laws Narrow Gauge RR Historic Dist.

AUG 18 1900ppot -

NorthEast View (Camera facing SW)

Photo by R. A. Dinsmore

Negative: Laws RR MUSEUM

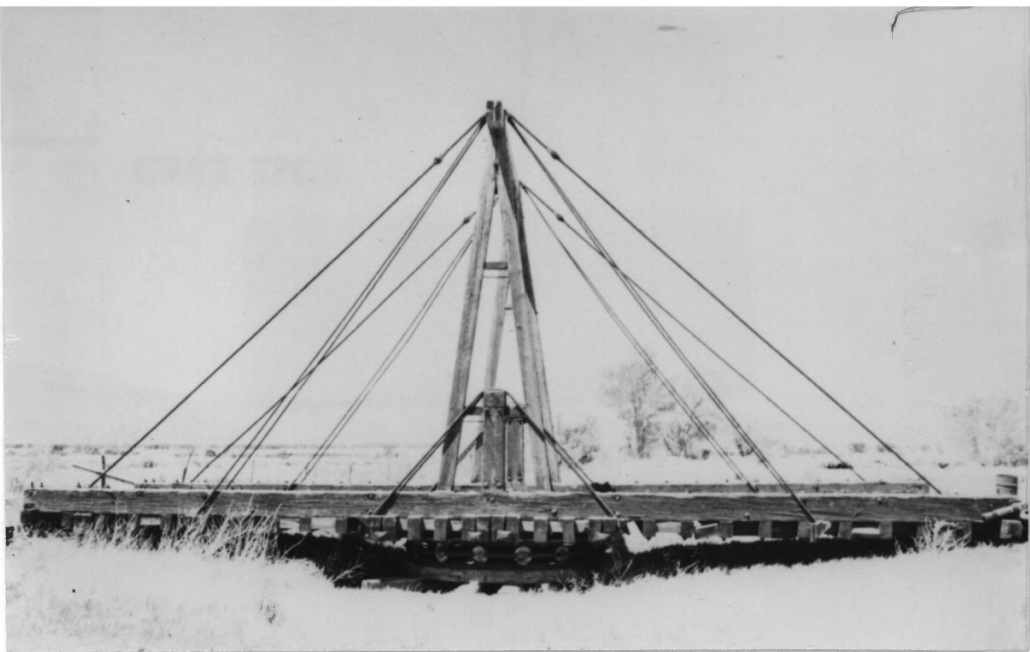


Lans Narrow Gauge RR Historic District

Water Tower - East View

RA. Dinsmore, 1980 AUG 18 1981

Neg: Lans RR Museum



Laws Names Gay RR Historic District

Turntable - East View

RA Dinsmore, ~~Aug~~ 18 1981

Ny: Laws RR Museum



Laws Narrow Gauge RR Historic District
Death Valley Passenger Car
showing extra long truck

assembly AUG 18 1981
Photo: RA Dinsmore, 1980
Neg: Laws RR Museum



Laws Narrow Gauge RR Historic District

Oil Pump House - North West

R.A. Dinsmore, 1980 ^{VIEW} AUG 18 1981

Neg: Laws RR Museum



Laws Narrow Gauge RR Historic

District

Agent's House - South East

View

R. A. Dinsmore AUG 18 1981

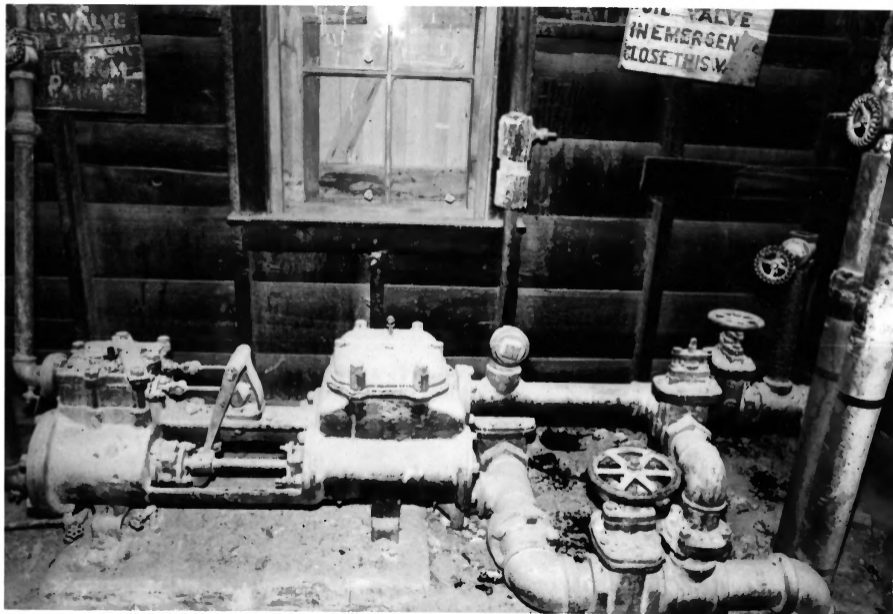
Neg: Laws RR Museum



Laws Narrow Gauge RR Historic Dist.
R.A. Dinsmore, 1980

Oil Tank Tower - East View

Neg. Laws RR Museum
AUG 18 1981



Leas Narrow Gauge RR Historic District

Ram Type - Steam Oil Pump **AUG 18 1981**

R.A. Dinsmore, 1980

Wg: Leas RR Museum



Lewis Narrow Gauge RR Historic District

Agent's House - Center Bed-
room - Looking West

RA Dinsmore 1980 **AUG 18 1981**

Neg: Lewis RR Museum



Law's Narrow Gauge RR Historic District

AUG 18 ~~1981~~

Agent's House - Kitchen

Looking West

R.A. Dinsmore, 1980

Neg. Law RR Museum

NOTICE
CLOSE THIS
DOOR IN
EMERGENCY

OIL VALVE
IN EMERGENCY
CLOSE THIS



Lewis Narrow Gauge RR Historic Dist

Oil Pump House - Interior

Looking East

R.A. Dinsmore 1980 **AUG 18 1981**

Neg: Lewis RR Museum



Laws Narrow Gauge RR Historic District

RA. Dinsmore, 199 **AUG 18 1981**
Water Pump House - Inter ~~1981~~
Pump Motor and Hoist

Nsg. Laws RR Museum