



1. Dos Lomitas Ranch House, Organ Pipe Cactus National Monument
2. Pima County, Arizona
3. Lawrence F. Van Horn
4. March 8, 1989
5. Branch of Planning, Western Team, Denver Service Center, National Park Service
6. looking northeast
7. Photograph No. 1

The scene has not changed since this photograph was taken. Current conditions are reflected.

LJVH September 22, 1992



1. Dos Lomitas Ranch House, Organ Pipe Cactus National Monument
2. Pima County, Arizona
3. Lawrence F. Van Horn
4. February 1, 1989
5. Branch of Planning, Western Team, Denver Service Center,
National Park Service
6. looking west
7. Photograph No. 2

The scene has not changed since this photograph
was taken. Current conditions are reflected.

LJVH September 22, 1992



1. Dos Lomitas Ranch House, Organ Pipe Cactus National Monument
2. Pima County, Arizona
3. Lawrence F. Van Horn
4. February 1, 1989
5. Branch of Planning, Western Team, Denver Service Center,
National Park Service
6. looking north
7. Photograph No. 3

The scene has not changed since this photograph was taken. Current conditions are reflected.

LJVH September 22, 1992



1. Dos Lomitas Ranch House, Organ Pipe Cactus National Monument
2. Pima County, Arizona
3. Lawrence F. Van Horn
4. July 16, 1992
5. Branch of Planning, Western Team, Denver Service Center,
National Park Service
6. looking north
7. Photograph No. 4



1. Saddle Shed/Tack House/Outbuilding No. 1, Dos Lomitas Ranch,
Organ Pipe Cactus National Monument
2. Pima County, Arizona
3. Lawrence F. Van Horn
4. July 16, 1992
5. Branch of Planning, Western Team, Denver Service Center,
National Park Service
6. looking south
7. Photograph No. 5



1. Saddle Shed/Tack House/Outbuilding No.1, Dos Lomitas Ranch,
Organ Pipe Cactus National Monument
2. Pima County, Arizona
3. Lawrence F. Van Horn
4. March 15, 1989
5. Branch of Planning, Western Team, Denver Service Center,
National Park Service
6. looking southwest
7. Photograph No. 6

The building leans more today.
LGHVH September 22, 1992



1. Saddle Shed/Tack House/Outbuilding No. 1, Dos Lomitas Ranch,
Organ Pipe Cactus National Monument
2. Pima County, Arizona
3. Lawrence F. Van Horn
4. March 15, 1989
5. Branch of Planning, Western Team, Denver Service Center,
National Park Service
6. looking southwest
7. Photograph No. 7, detail of curved siding. This distinctive
feature has not changed. LJVH September 22, 1992



1. Ruins of Grain Shed/Outbuilding No.2, Dos Lomitas Ranch,
Organ Pipe Cactus National Monument
2. Pima County, Arizona
3. Lawrence F. Van Horn
4. July 16, 1992
5. Branch of Planning, Western Team, Denver Service Center,
National Park Service
6. looking south
7. Photograph No. 8

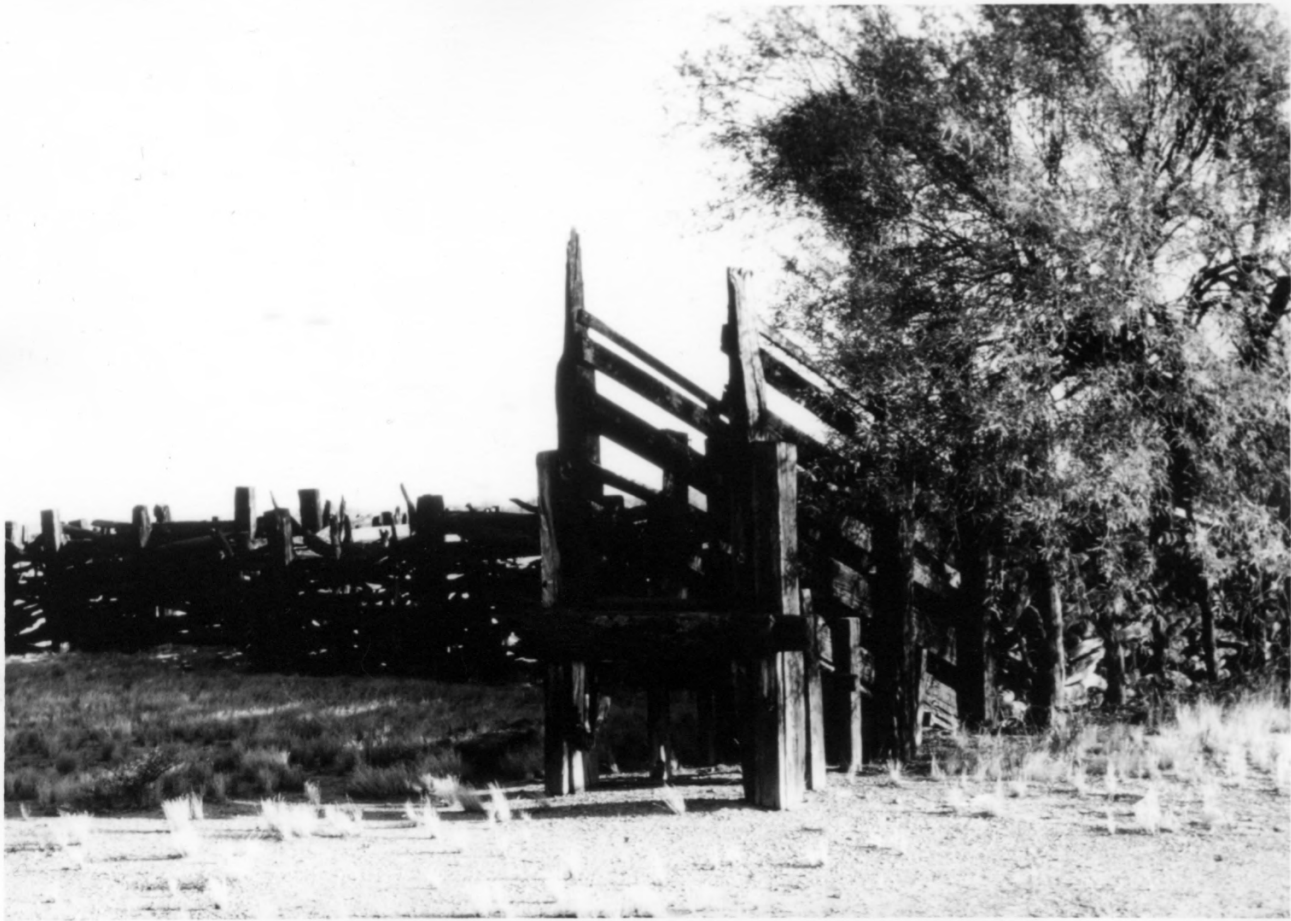


1. Corral, Dos Lunetas Ranch, Organ Pipe Cactus National Monument
2. Pima County, Arizona
3. Lawrence F. Van Horn
4. July 16, 1992
5. Branch of Planning, Western Team, Denver Service Center, National Park Service
6. looking southeast
7. Photograph No. 9.



1. Corral, Dos Lomitas Ranch, Organ Pipe Cactus National Monument
2. Pima County, Arizona
3. Lawrence F. Van Horn
4. February 1, 1989
5. Branch of Planning, Western Team, Denver Service Center, National Park Service
6. looking north
7. Photograph No. 10

This photograph reflects current conditions.
LJVA September 22, 1992



1. Corral, Dos Lomas Ranch, Organ Pipe Cactus National Monument
2. Pima County, Arizona
3. Lawrence F. Van Horn
4. July 16, 1992
5. Branch of Planning, Western Team, Denver Service Center, National Park Service
6. looking southeast
7. Photograph No. 11



1. Corral, ^{and windmill/well of Blankenship Well,} Dos Lomitas Ranch, Organ Pipe Cactus National Monument
2. Pima County, Arizona
3. Lawrence F. Van Horn
4. July 16, 1992
5. Branch of Planning, Western Team, Denver Service Center,
National Park Service
6. looking north
7. Photograph No. 12



1. Windmill/well of Blankenship Well, Dos Lomitas Ranch, Organ Pipe Cactus National Monument
2. Pima County, Arizona
3. Lawrence F. Van Horn
4. July 16, 1992
5. Branch of Planning, Western Team, Denver Service Center, National Park Service
6. looking east
7. Photograph No. 13



1. Ruins of Railroad-Tie Building/Outbuilding No. 3, Dos Lomitas Ranch,
Organ Pipe Cactus National Monument
2. Pima County, Arizona
3. Lawrence F. Van Horn
4. July 16, 1992
5. Branch of Planning, Western Team, Denver Service Center,
National Park Service
6. looking north
7. Photograph No. 14



1. Ruins of Railroad-Tie Building/Outbuilding No. 3, Dos Lunetas Ranch,
Organ Pipe Cactus National Monument
2. Pima County, Arizona
3. Lawrence F. Van Horn
4. July 16, 1992
5. Branch of Planning, Western Team, Denver Service Center,
National Park Service
6. looking west
7. Photograph No. 15



1. Ruins of Railroad-Tie Building/Outbuilding No.3, Dos Lomitas Ranch,
Organ Pipe Cactus National Monument
2. Pima County, Arizona
3. Charles Conner
4. August 23, 1990
5. Organ Pipe Cactus National Monument
6. looking north
7. Photograph No.16



1. Ruins of Railroad-Tie Building/Outbuilding No. 3, Dos Homitas Ranch,
Organ Pipe Cactus National Monument
2. Pima County, Arizona
3. Lawrence F. Van Horn
4. July 16, 1992
5. Branch of Planning, Western Team, Denver Service Center,
National Park Service
6. looking north
7. Photograph No. 17.