

(Great Northern Railway Company Bridge)  
Steamboat Bridge

Wilkinson Twp.; Cass County, 4 1980

Robert Frame

1979

OCT 1 4 1980  
AUG 4 1980

Minnesota Historical Society, 690

Cedar Street, St. Paul, MN 55101 1/5

Exterior detail of turning mechanism

03096/4



Great Northern Railway Company Bridge/  
Steamboat Bridge

Wilkinson Twp.; Cass County

Robert Frame  
1979

OCT 14 1980

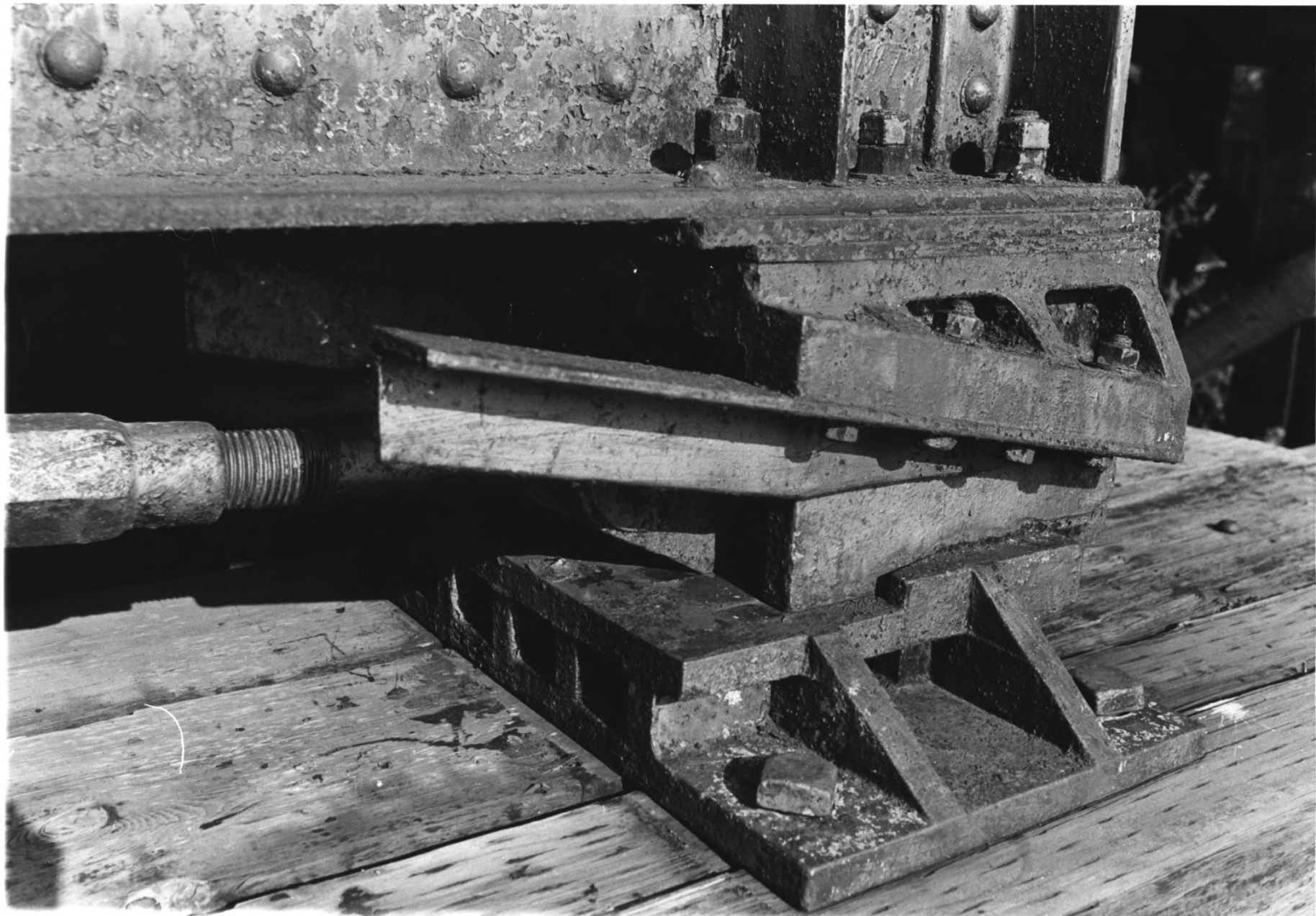
2/5  
AUG 4 1980

Minnesota Historical Society, 690

Cedar Street, St. Paul, MN 55101

Interior detail of turning mechanism

03009/16



(Great Northern Railway Company Bridge)/  
Steamboat Bridge

Wilkinson Twp.; Cass County

Robert Frame

1979

OCT - 14 1980

AUG 4

1980

Minnesota Historical Society, 690

Cedar Street, St. Paul, MN 55101

03009/13

detail of locking mechanism

3/5



(Great Northern Railway Company Bridge)  
Steamboat Bridge

Wilkinson Twp.; Cass County

4/5

Robert Frame

1979

OCT 14 1980

AUG 4 1980

Minnesota Historical Society, 690

Cedar Street, St. Paul, MN 55101

Facing North

03009/12





Great Northern Railway Company Bridge

Steamboat Bridge

Wilkinson Twp.; Cass County

OCT 4 1980

3/5

Robert M. Frame

1979

AUG 4 1980

Minnesota Historical Society, 690

Cedar Street, St. Paul, MN 55101

Facing southwest 03096/6