



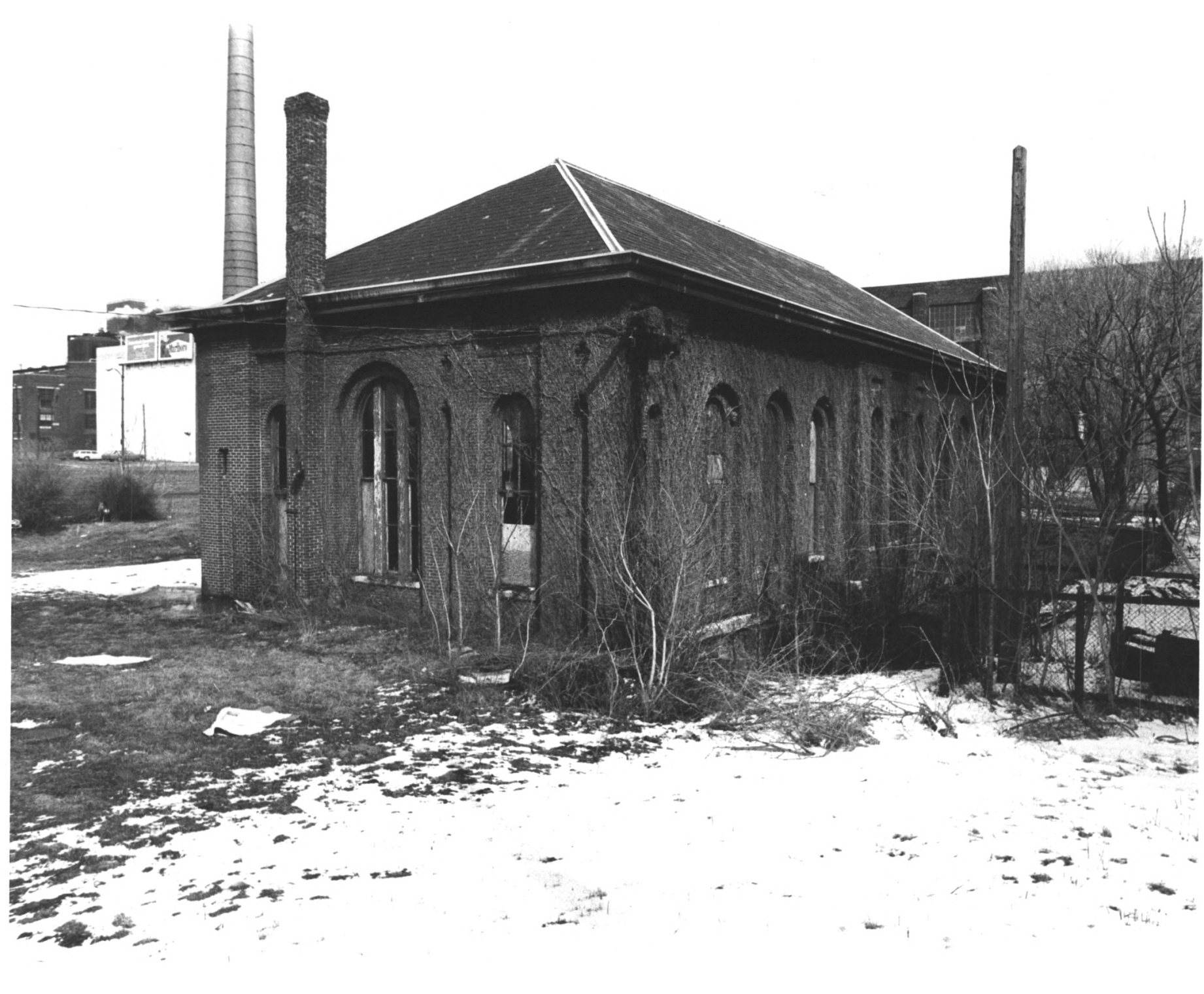
West Washington St. Pumping Station  
Indianapolis, Marion County, Ind.  
Exterior: North Elevation, facade.

West Washington Street Pumping Station  
Indianapolis, Indiana  
Malcolm Fancher 1980  
J. Wilson Photography  
North elevation  
Photo # 1 of 4

*Marion Co.*

JUN 11 1980

JUL 17 1980



Washington Street Pumping Station  
Indianapolis, Marion County, Ind.  
Exterior: South - West corner

West Washington Street Pumping Station  
Indianapolis, Indiana  
Malcolm Fancher 1980  
J. Wilson Photography  
Camera facing northeast  
Photo # 2 of 4

*Marion Co.*

JUN 1 1 1980  
JUL 1 7 1980



West Washington  
Indianapolis,  
Interior: view

St. Pumping Station  
Marion County, Ind.  
looking east

West Washington Street Pumping Station  
Indianapolis, Indiana  
Malcolm Fancher 1980  
J. Wilson Photography  
Interior, camera facing east  
Photo # 3 of 4

*Marion Co.*

**JUN 11 1980**

JUL 17 1980



West Washington St. Pumping Station  
Indianapolis, Marion County, Ind.  
Interior: view looking west

West Washington Street Pumping Station  
Indianapolis, Indiana  
Malcolm Fancher 1980  
J. Wilson Photography  
Interior, camera facing west  
Photo # 4 of 4

*Marion Co.*

JUL 17 1980  
JUN 11 1980