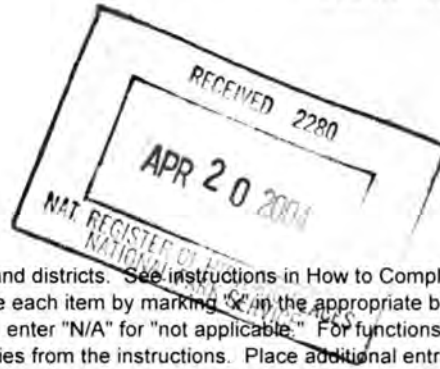


United States Department of the Interior
National Park Service

National Register of Historic Places
Registration Form



This form is for use in nominating or requesting determinations for individual properties and districts. See instructions in How to Complete the National Register of Historic Places Registration Form (National Register Bulletin 16A). Complete each item by marking "X" in the appropriate box or by entering the information requested. If any item does not apply to the property being documented, enter "N/A" for "not applicable." For functions, architectural classification, materials, and areas of significance, enter only categories and subcategories from the instructions. Place additional entries and narrative items on continuation sheets (NPS Form 10-900a). Use a typewriter, word processor, or computer, to complete all items.

1. Name of Property

historic name Milton Cemetery

other names/site number _____

2. Location

street & number 211 Centre Street n.a. not for publication

city or town Milton n.a. vicinity

state Massachusetts code MA county Norfolk code 021 zip code 02186

3. State/Federal Agency Certification

As the designated authority under the National Historic Preservation Act of 1986, as amended, I hereby certify that this nomination request for determination of eligibility meets the documentation standards for registering properties in the National Register of Historic Places and meets the procedural and professional requirements set forth in 36 CFR Part 60. In my opinion, the property meets does not meet the National Register Criteria. I recommend that this property be considered significant nationally statewide locally. (See continuation sheet for additional comments.)

Betsy Friedberg, National Register Director 4/13/04
Signature of certifying official/Title Cara H. Metz, State Historic Preservation Officer Date
Massachusetts Historical Commission

State or Federal agency and bureau

In my opinion, the property meets does not meet the National Register criteria. (See continuation sheet for additional Comments.)

Signature of certifying official/Title _____ Date _____
State or Federal agency and bureau _____

4. National Park Service Certification

I, hereby certify that this property is:

- entered in the National Register See continuation sheet.
- determined eligible for the National Register See continuation sheet.
- determined not eligible for the National Register
- removed from the National Register
- other (explain): _____

Edson H. Beall Signature of the Keeper Date of Action 6/2/04

Milton Cemetery
Name of Property

Norfolk, MA
County and State

5. Classification

Ownership of Property

(Check as many boxes as apply)

(Check only one box)

- private
- public-local
- public-State
- public-Federal

- building(s)
- district
- site
- structure
- object

Number of Resources within Property

(Do not include previously listed resources in the count.)

Contributing	Noncontributing	
8	1	building
13	1	sites
6	0	structures
15	3	objects
42	5	Total

Name of related multiple property listing

(Enter "N/A" if property is not part of a multiple property listing.)

n/a

Number of contributing resources previously listed in the National Register

0

6. Function or Use

Historic Functions

(Enter categories from instructions)

FUNERARY: cemetery

Current Functions

(Enter categories from instructions)

FUNERARY: cemetery

7. Description

Architectural Classification

(Enter categories from instructions)

Late Victorian: Queen Anne (supt's. house)

Mid 19th Century: Gothic Revival (rec'ing. Tomb)

20th Century Revival: Colonial Revival (cem. Bldg.)

Materials

(Enter categories from instructions)

foundation

walls wood

roof

other slate, granite, iron, marble

Narrative Description

(Describe the historic and current condition of the property on one or more continuation sheets.)

United States Department of the Interior
National Park Service

National Register of Historic Places Milton Cemetery
Continuation Sheet Milton (Norfolk), MA

Section number 7 Page 1

7. DESCRIPTION

The Milton Cemetery is a 102.13-acre tract of rolling terrain, located in a residential section of the town at the intersection of Centre Street and Randolph Avenue. The main campus of Milton Academy, a private preparatory school, is located diagonally across the intersection. The property is bordered by three town-owned streets, on the north by Centre Street and Brook Road and on the west by Gun Hill Street, and also on the west by a state-owned street, Randolph Avenue. A wooded lot owned by Milton Academy also defines the western boundary. Along its eastern and southern boundaries, the cemetery abuts 20th century single-family developments. The Milton Cemetery consists of two parts: the burial ground and the adjoining parcel with the superintendent's residence/office. The irregular shape of the 101.6-acre burial ground with approximately 9000 gravestones is reflective of its development over a 330-year period, beginning in 1672. The burial ground is composed of 3 distinct parts: the Old Burial Ground (1672-1854), laid out on a linear pattern established in colonial times; the New Cemetery (1854-1945), designed according to the aesthetic principles of the "rural" cemetery movement; and the Modern Cemetery (1945-present). A portion of this latter part, the Ladd Section, is considered noncontributory because it was added to the cemetery in 1962. There are three entrances to the cemetery: Centre Street-Centennial Avenue, the main entrance; Centre Street-Willow Avenue; and Gun Hill Road-Centennial Avenue. The Queen Anne superintendent's house/office (1889) and stable (1889) is located on a .53-acre parcel of land adjoining the burial grounds at the Willow Avenue entrance.

The Old Burial Ground: 1672-1854

The Old Burial Ground (MAP #s1A-E; MHC #800; Photograph #s1, 2) is a 3-acre rectangular tract of gentle undulating land located at the front (northern) end of the cemetery facing Centre Street. It is composed of the original burial ground, the 1672, .25-acre Reedman Section (MAP #1A; Photograph #1) and four enlargements: the ca. 1729, .07-acre Ministerial Tomb Section (MAP #1B) to the east; the 1760, .725-acre Foye Section (MAP #1C) to the south and west; the 1794, .75-acre How-Vose Section (MAP #1D) to the south and east; and the 1837, 1.25-acre First Amory Section (MAP #1E; Photograph #2) to the west. On several town maps the original burial ground with the first three enlargements is referred to as the "Old, Old Burial Grounds" and the fourth enlargement as the "Old Burial Grounds." Four of the sections were named for the men who deeded the land to the town. The area is enclosed along Centre Street by a granite

(continued)

United States Department of the Interior
National Park ServiceNational Register of Historic Places
Continuation SheetMilton Cemetery
Milton (Norfolk), MASection number 7 Page 2

block stone wall (MAP #16; MHC #963). Access to the Old Burial Ground from Centre Street is through a cut granite, dual entrance in the stone wall, a small opening for pedestrians and a larger one for carts. The latter is closed off by 19th century iron gates (MAP #28; MHC #975). The wall dates to 1869 when it was rebuilt. The gates date to 1837 when iron gates are first mentioned in the town reports or to the 1869 stone reconstruction.

The linear pattern of the interior of the grounds is defined by the straight lines of both the paths, once covered with gravel and now grassed over, and the arrangement of the gravestones. Walnut Avenue dating to 1794 bisects the grounds from north to south, dividing the 17th/18th centuries sections from the 19th century First Amory Section. Nanepashemet Avenue runs along the rear of the Old Burial Ground, an unnamed parallel path at the front along the Centre Street stone wall and another unnamed path connects the two along Willow Avenue. The last three paths date to 1846. Walnut and Nanepashemet Avenues are marked with 1892 decorative cast iron street signs.

The ca. 600 gravestones, which are in poor to good condition, document the evolution of the design and material of this type of marker from the 1687 Christopher Wadsworth stone, the earliest headstone in the cemetery, to the mid-19th century. The 17th, 18th, and early 19th centuries slate gravestones of the Reedman, Foye, and How/Vose Sections display an evolving iconography from the earliest grim death heads through the enlightened winged cherubs and portraits to the willow and urn that continued to the mid-19th century. Of note are the slate stones designed by four known carvers. The shoulder arched stones of Christopher Wadsworth (d. 1687) (MAP #18; MHC #965; Photograph #17), Thomas Rawlings (d. 1693) (MAP #19; MHC #966), Mary Wyat (d. 1705) (MAP #20; MHC #967) and Thomas Vose (d. 1708) (MAP #21; MHC #968) are attributed to William Mumford (ca. 1640-1718) based on their distinctive style characteristics: capital lettering, a death head with round hollow eyes, teeth squarely meeting and a nose made of two triangles, one inside the other. The death head carvings on the shoulder arched stones of Joseph Sumner (d. 1731) (MAP #22; MHC #969) and George Sumner (d. 1732) (MAP #23; MHC #970) are similar to Mumford's with the exception of the design of the nose with one triangle set below the other. These carvings have been attributed to James Foster II (1698-1763) of Dorchester. Henry Christian Geyer (d. by 1791) signed the shoulder arched stone he designed for Seth Sumner (d. 1771) (MAP #24; MHC #971; Photograph #18). Typical of his style are the crowned, winged cherubic heads set in an unusual profile. The carving of the urn on the arched stone for Samuel Bent (d. 1797) (MAP #25; MHC #972; Photograph #19) has been attributed to Bartlett Adams. In contrast to the usual incised design of urns on surrounding stones, the Bent urn was carved to produce the design in relief.

(continued)

United States Department of the Interior
National Park ServiceNational Register of Historic Places
Continuation SheetMilton Cemetery
Milton (Norfolk), MASection number 7 Page 3

By the mid-19th century slate had given way to granite and marble as the material of choice and such gravestones dominate the First Amory Section. The stones, often without designs except the carved names, are shaped by shallow segmental and peaked arches with several Gothic Revival pointed arched examples. Also of note in this section are seven granite and marble obelisks, and the elaborate granite memorial to the Whitcher Family (1841) (MAP #26; MHC #973). Joseph Whitcher (1815-1862) was a granite stone cutter and the memorial to his family is attributed to his craftsmanship. A large granite urn, half veiled with drapery, sits atop a cut granite plinth. The polished granite sides bear the names of the Whitcher family (d. 1841-1864) who are buried here. A low granite wall, with urns located at the corners, squares off the area surrounding the memorial.

The Old Burial Ground also features a number of granite tombs. The earliest tombs were built in ca. 1719 horizontally into a knoll at the southwestern corner of the Reedman Section. The Fenno Tomb (MAP #12; MHC #958) is the only extant tomb of the three that were built. Similar in design to the later horizontal tombs in the Vose Section, it is unclear if the current structure dates to 1719 or to a later rebuilding. Most of the extant tombs are set into a small hill that runs along the eastern edge of the Old Burial Ground in the 1794 Vose Section. The Vose Section Tombs (MAP #13; MHC #959) are of two forms, vertical and horizontal. Three separate banks of multi-chamber vertical tombs are built of granite blocks with finished pedimented granite facades. Several of the chambers still retain limestone tablets that are carved with the names of the deceased. The nine separate horizontal tombs are constructed of large granite blocks with iron doors and hinges. At the rear of the How Section, there was also a row of single vertical granite tombs, initiated by the 1799 request of Edward H. Robbins (1758-1829) to build a tomb at southwestern corner of the How Section as it abuts Walnut Avenue. In 1886 the cemetery trustees began to convert the granite tombs to burial plots, using the granite lintels to mark the burial sites. Seven granite lintels with boldly carved names remain, including that of Robbins. On the other side of Walnut Avenue, at the rear of the First Amory Lot, a single vertical granite tomb remains, the Baxter Tomb (MAP #14; MHC #960; Photograph #16), dating to 1859.

Mature trees, e.g. maples, oaks, lindens, and white pines, grow throughout the Old Burial Ground. During the 1990s, two Japanese weeping cherry trees - the Japanese symbol of mourning - were planted along the Centre Street stonewall.

(continued)

United States Department of the Interior
National Park Service

National Register of Historic Places
Continuation Sheet

Milton Cemetery
Milton (Norfolk), MA

Section number 7 Page 4

The New Cemetery (1854-1945)

In contrast to the linear pattern of the Old Burial Ground is the New Cemetery (MAP #s1F-1J; MHC #800; Photographs #3,4) whose gracefully winding avenues and paths were laid out according to the design principles of the mid-19th century "rural" cemetery movement, which advocated incorporating burial grounds within a pastoral and naturalistic landscape. This section, which lies to the south (rear), east and west of the Old Burial Ground is composed of five sections: the 18.725-acre, 1854 Second Amory Section (MAP #1F) with two major enlargements, the 12-acre, 1874 C. Churchill Section (MAP #1H; MHC 800; Photograph #4) and the 22.39-acre, 1897 Peabody Section (MAP #1J), and two minor additions, the 1-acre First (1858) and 2.25-acre Second (1888) J. Churchill Sections (MAP #1G and MAP #1I, respectively). Cut and fieldstone walls dating to the 19th century partially define the northern, eastern, and southern boundaries. The Peabody Section fieldstone (MAP #16; MHC #963) wall along Centre Street was rebuilt in 1935 with a cement cap. The present three entrances to the cemetery date to the New Cemetery addition: The main entrance from Centre Street along Centennial Avenue (1877), the side entrance from Centre Street along Willow Avenue (1860) (Photograph #3) and the rear entrance from Gun Hill Street (ca. 1860). All three entrances have new iron gates (MAP #sC,D,E; MHC #s976,977,978) that were hung in 1996 and 1997.

The New Cemetery is characterized by rolling terrain, extending from Centre Street along an undulating plain and then descending to a valley in the middle and rising again to the rear (southern) hill and once again descending to a valley at the rear boundary. Unquity Brook once flowed through the middle valley. Today it continues to feed the duck pond (MAP #2; MHC #955; Photograph #5), an irregularly shaped body of water created in 1883 in the Second Amory Section. The pond, bordered by willow trees and benches, offers a place for quiet contemplation in a bucolic setting. In 1970 most of Unquity Brook was placed underground via a culvert that runs under Locust Avenue from the duck pond to Paradise Pond, a wooden wetland, so that the once swampy valley could be developed for burial sites. An unnamed brook also ran along the rear valley until, by 1930, it too had been placed underground. While once planned for lakes and burial sites, this area remains an undeveloped woodland.

Winding avenues and paths, laid out from ca. 1856 to 1930, were gracefully adapted to this terrain by three sets of landscape architects, Copeland and Cleveland (1856) for the Second Amory Section, Ernest W. Bowditch (1898) for the Peabody Section, and a local engineering firm, Whitman and Breck (1877) for the C. Churchill Section. Threading its way through the New Cemetery from the main Centre Street

(continued)

United States Department of the Interior
National Park Service

National Register of Historic Places Milton Cemetery
Continuation Sheet Milton (Norfolk), MA

Section number 7 Page 5

entrance to the Gun Hill entrance is Centennial Avenue (MAP #17; MHC #964), designed in 1877 by Whitman and Breck to tie the Second Amory Section and the C. Churchill Section together into a harmonized whole. Many of the trees, predominantly Norway maples, that were donated when the avenue was created, still border avenue. The only significant alteration to the historic layout of avenues was the above-mentioned 1970 construction of the straight Locust Avenue over Unquity Brook with the resulting demolition of much of Dell Avenue that once gracefully mirrored the curve of Larch Avenue. All the avenues are marked by either 1892 decorative cast iron street signs (MAP #29; MHC #979) or their modern sheet metal replacements. A variety of mature evergreens, e.g. hemlocks, white pines, and deciduous trees, e.g. sugar and red swamp maples, red, white and pin oaks, along with flowering dogwood, cherry, and crabapple trees, grow throughout the 19th century section of the cemetery, informally planted to add to the rural feeling of the landscape.

The headstones of the New Cemetery are primarily made of granite and the designs are restrained. Several families dedicated larger granite Gothic Revival and Classical monuments to their families, e.g. the Babcock and Sheldon family memorials along Anemone Avenue (Photograph #4). Currently the only known designer of note is sculptor Augustus Saint-Gaudens (1848-1907), who designed the gravestone of artist Dennis Miller Bunker (1861-1890) (MAP #27; MHC #974; Photograph #10). Located on Lily Path, between Oak and Pine Avenues, the ca. 1890 white marble stone is carved with a neo-classical foliated design centered on an urn.

Also of note are two burial areas, one for single and charitable graves and the other for soldiers' graves. The 1877 plot for single and charitable graves is laid out in concentric ovals at the rear of the 1874 C. Churchill Section. It is encircled by Holly Avenue. At the center of the site is a white Italian marble statue of an angel (MAP #30; MHC #980; Photograph #9) on a pedestal, now in fair condition. The statue dates to 1882, although the sculptor is unknown. The 1920 Soldiers' Lot (MAP #3; MHC #956; Photograph #12) fronts on Soldiers Avenue in the 1897 Peabody Section. An uncut stone memorial with a bronze tablet dedicates the area to men and women from Milton, who have served in the armed services. Approximately 60 simple white marble gravestones are aligned in rows and date from 1894 to the present. A flagpole towers over the plot.

Built into the base of the hill at the conjunction of Elm, Willow and Centennial Avenues on the border of the Second Amory and C. Churchill Sections is the Gothic Revival receiving tomb (MAP #15; MHC #961; Photograph #8). The well-preserved structure was constructed of cut granite in 1879 by O. T.

(continued)

United States Department of the Interior
National Park ServiceNational Register of Historic Places
Continuation SheetMilton Cemetery
Milton (Norfolk), MASection number 7 Page 6

Rogers and Company, a West Quincy granite firm. A wooden door with brass fleur-de-lis hinges is set within a keystone arch, carved with a fleur-de-lis and quatrefoil pattern. A Gothic arch with a round window is centered in the pinnacled gable above. Granite walls extend to either side, ending with pillars carved with rosettes. The interior of the tomb was rebuilt in 1973 to accommodate larger modern caskets. The setting is informally landscaped with a grove of pine trees in the rear and evergreen and rhododendron shrubbery to the sides. In the front of the receiving tomb is a small triangular piece of land that in the 1879 town report was referred to as the J. D. Bradlee ornamental plat in honor of the Milton resident who donated a large number of trees and shrubs to the cemetery. Today only a mature birch tree and several rhododendron bushes remain.

Located nearby at the intersection of Larch and Rose Avenues are the maintenance buildings, arranged around an interior courtyard. They are in good to fair condition and continue to serve their historic uses. The cut granite 1929 Cemetery Building (MAP #7; MHC #718; Photograph #7) provides lunch quarters for cemetery workmen and storage for tools. A Colonial Revival gable portico extends from the third bay of the four-bay facade. Set on a granite foundation, the 1-story building rises to a hip roof with a single chimney set on the ridge. While the original windows and door are intact, they are now covered with protective wired screening. To the rear are two 4-bay, side gable garages that complete the courtyard: Maintenance garage #1 (MAP #8; MHC #719; Photographs #7) constructed of cut granite in 1936 and maintenance garage #2 (MAP #9; MHC #720; Photograph #7) built in ca. 1950 and sheathed in wood shingles. A corrugated aluminum garage, maintenance garage #3 (MAP #B; MHC #721), was added to this complex in 1994. The latter two garages were constructed on the Brooks-Ladd Section (MAP #1K) after it was added to the cemetery in 1945.

The superintendent's house and office (MAP #4; MHC #70; Photograph #6) and stable (MAP #5; MHC #716; Photograph #13) were constructed in 1889 on a parcel of land adjoining the Centre Street-Willow Avenue entrance across from the Old Burial Ground. The 2½-story Queen Anne residence is composed of the 3-bay, hip roof main block and a side gable wing. Wood clapboards sheath the first floor with wood shingle in a staggered design on the second floor. Queen Anne details include half-timbering in the gables and dormer, a bracketed cutaway bay window and the front porch with turned balusters. In 1921 a one-story section with a fireproof vault was added to the eastern elevation to serve as an office. The only exterior alteration since then has been modern replacement windows. The 3-bay, clapboard and wood shingle stable rises one story to a hip roof with cupola. Windows are of varying sizes. The four small square ones on the eastern and rear elevations mark the former horse stalls. In 1922 a hip roof, concrete block 2-car garage (MAP #6; MHC #717) was added to the complex.

(continued)

United States Department of the Interior
National Park Service

National Register of Historic Places
Continuation Sheet

Milton Cemetery
Milton (Norfolk), MA

Section number 7 Page 8

The Modern Cemetery: 1945 - 1952

The Modern Cemetery (MAP #s1K, A; MHC #800; Photograph #s11,20) lies to the east of the New Cemetery to which it is linked by Locust and Maple Avenues. It is composed of the 34.74-acre, 1945 Ladd-Brooks Section (MAP 1K; Photograph #11) and the 7.45-acre, 1962 Ladd Section (MAP #A; Photograph #20). The 1945 Ladd-Brooks Section consists of two parts connected by a dirt path. The Brooks part, a wooded lot bordered on the north by Brook Road, was the rear section of the J. Henry Brooks Estate and has not been developed for burial purposes. Still visible are the foundation stones of the coachman's cottage for the Brooks Estate that was demolished in 1953.

The Ladd part (MAP 1K; Photograph #11), was the rear portion of the Alexander H. Ladd estate. This part, immediately to the east of the New Cemetery, has been developed for burial lots, initially along Maple Avenue which was laid out in 1946 as a circular loop connecting to Circle Avenue on the slope of the rear (southern) hill. Paradise Pond, a wooded wetland, lies in the valley at the base of the hill. As mentioned above, in 1970 Unquity Brook was put underground via a culvert to flow into this pond. Locust Avenue was laid out over the culvert. Also at that time the northern end of the Maple Avenue was straighten out to connect with Coleus Avenue. To the east of Maple Avenue, the land slopes down to a valley and then rises again. This area was developed for burial lots along several curvilinear roads culminating with Butternut Avenue in the late 1970s. The grave markers in the Modern Cemetery are predominately rectangular granite headstones with restrained decoration. As mentioned above the maintenance complex was enlarged with the construction of maintenance garage #2 (MAP #9; MHC #720) in ca. 1950 and maintenance garage #3 (MAP #B; MHC #721) in 1994.

The 1962 Ladd Section (MAP #A; Photograph #20) is an open piece of flat land that was the front section of the Alexander H. Ladd Estate and still bears some of its landmarks. The Centre Street driveway divides at the front of the lot and runs along both sides of the property to the rear connection with the rest of the cemetery. Today this driveway has been named Paradise, Magnolia, Beech, and Birch Avenues. The site of the former house at the front of the property is bordered by mature beech and evergreen trees. The 1912 house was razed after a major fire in 1984 and during 1995-1999 the site was developed into a formal garden for cremation internment and funeral services (Photograph #20) The circular garden is defined by stones walls. The rear (southern) wall was formerly the terrace wall of the Ladd House. The design was created by Therese Desmond-Sills, the present superintendent of the cemetery. At the rear of the property are the ca. 1875 Watson gardener's cottage (MAP #10; MHC #722; Photograph #14) and barn (MAP #11; MHC #723; Photograph #15). The clapboard dwelling rises 1 1/2

(continued)

**United States Department of the Interior
National Park Service**

National Register of Historic Places **Milton Cemetery**
Continuation Sheet **Milton (Norfolk), MA**

Section number 7 Page 9

stories to a side gable roof. The only ornamentation is the bracketed center entrance of the 5-bay facade. To the rear is the 2½ story gable barn, sheathed in wood shingles.

Archaeological Description

Although no ancient Native American sites are recorded in the Milton Cemetery, sites may be present. Seventeen sites have been identified in the general area (within one mile). Environmental characteristics of the cemetery represent several locational criteria (slope, soil drainage, proximity to wetlands) that are favorable for the presence of Native American sites. The cemetery includes several well-drained, level to moderately sloping terraces and other land forms situated within 1,000 feet of wetlands that would have been favorable site locations. Unquity Brook originally flowed through the cemetery in an east/west oriented stream valley. In 1970, most of the brook was diverted underground in a culvert that runs under Locust Ave. Several small ponds are also located in the cemetery or within 1,000 feet of its boundary. The area is located within the Boston Harbor/Neponset River drainage. Given the above information, the documented presence of settlement in the area for all periods of Native occupation recognized for Southeastern New England, and the presence of over 9,000 graves, a moderate to high potential exists for locating ancient Native American resources in the cemetery.

A high potential also exists for locating 17th through 20th century historic archaeological resources in the cemetery. Milton's first meetinghouse was built ca. 1656 at the intersection of Adams Street and Churchill Lane; however, potential survivals from this building may lie outside the cemetery. Structural evidence may survive from many of the homes and outbuildings that were demolished or lost to fire prior to their incorporation into the cemetery. Archaeological evidenced from 17th and early 18th century homes, outbuildings, and occupational related features (trash pits, privies, wells) may exist in the area but have yet to be demonstrated. The .25 acre Reedman lot fronting on Centre Street opposite its intersection with Churchill Lane contains the earliest graves in the cemetery, predating 1672. The Reedman lot may have started as a small family or common burial ground for the area later incorporating other land comprising the current cemetery. Early homesteads may have existed in the vicinity of the Reedman lot. Later structures represented by foundation stones from the coachman's cottage (demolished in 1953) are still visible in the wooded lot of the Brooks section of the cemetery bordered on the north by Brook Road. The coachman's cottage occupied the rear section of the J. Henry Brooks Estate acquired by the cemetery after 1945. Structural evidence from the Ladd Estate, razed in 1984

(continued)

United States Department of the Interior
National Park Service

National Register of Historic Places **Milton Cemetery**
Continuation Sheet **Milton (Norfolk), MA**

Section number 7 Page 10

after a major fire, in the area developed as a formal garden for cremation internment and funeral services. Structural evidence from outbuildings and occupational related features (trash pits, privies, wells) associated with the Brooks Estate, Ladd Estate, and cemetery operations and maintenance may also exist.

Seventeenth through 20th century archaeological resources may also exist related to the changing boundaries of the cemetery and its graves. Post-holes and buries remnants of stone walls may survive associated with fence lines and boundaries during various stages of cemetery growth. Evidence of boundaries may also exist for family burial areas. Unmarked graves may be present as a result of intentionally unmarked burials of unknown persons, paupers or other indigent persons or from lost stones or wooden markers that have deteriorated. Both marked and unmarked graves may contain stratigraphic evidence of a burial shaft, skeletal remains, and funerary artifacts including a coffin, evidence of a coffin that has deteriorated, personal, and memorial items. Some graves may contain multiple burials or no burial shaft or remains at all as with the case of memorial markers of individuals buries elsewhere. Some burials may also contain incomplete remains as in the case of reinterments

(end)

Milton Cemetery

Name of Property

Norfolk, MA

County and State

8. Statement of Significance

Applicable National Register Criteria

(Mark "x" in one or more boxes for the criteria qualifying the property for National Register listing.)

- A** Property is associated with events that have made a significant contribution to the broad patterns of our history.
- B** Property is associated with the lives of persons significant in our past.
- C** Property embodies the distinctive characteristics of a type, period, or method of construction or represents the work of a master, or possesses high artistic values, or represents a significant and distinguishable entity whose components lack individual distinction.
- D** Property has yielded, or is likely to yield, information important in prehistory or history.

Criteria Considerations

(Mark "x" in all the boxes that apply.)

Property is:

- A** owned by religious institution or used for religious purposes.
- B** removed from its original location.
- C** a birthplace or grave.
- D** a cemetery.
- E** a reconstructed building, object, or structure.
- F** a commemorative property.
- G** less than 50 years of age or achieved significance within the past 50 years.

Narrative Statement of Significance

(Explain the significance of the property on one or more continuation sheets.)

9. Major Bibliographical References

(Cite the books, articles, and other sources used in preparing this form on one or more continuation sheets.)

Previous documentation on file (NPS):

- preliminary determination of individual listing (36 CFR 67) has been requested
- previously listed in the National Register
- previously determined eligible by the National Register
- designated a National Historic Landmark
- recorded by Historic American Buildings Survey # _____
- recorded by Historic American Engineering Record # _____

Areas of Significance

(Enter categories from instructions)

- Art**
- Architecture**
- Community Planning and Development**
- Landscape Architecture**
- Social History**

Period of Significance

1672-1954

Significant Dates

<u>1672</u>	<u>1794</u>	<u>1858</u>	<u>1897</u>
<u>1729</u>	<u>1837</u>	<u>1874</u>	<u>1945</u>
<u>1760</u>	<u>1854</u>	<u>1888</u>	

Significant Person

(Complete if Criterion B is marked above)

Cultural Affiliation

Architect/Builder

See continuation sheet

Primary location of additional data:

- State Historic Preservation Office
- Other State agency
- Federal agency
- Local government
- University
- Other

Name of repository:

Milton Public Library, Milton Cemetery office

United States Department of the Interior
National Park Service

National Register of Historic Places
Continuation Sheet

Milton Cemetery
Milton (Norfolk), MA

Section number 8 Page 1

8. ARCHITECT/BUILDER

Bowditch, Ernest W.
Breck, Charles and Son
Cleveland, Horace William Shaler
Copeland, Robert Morris
Rogers, O. T. and Company
Tucker, John A. and Son
Whitcher, Joseph
Whitman and Breck

Gravestone Carvers:

Adams, Bartlett
Foster, James II
Geyer, Henry Christian
Mumford, William
Saint-Gaudens, Augustus

STATEMENT OF SIGNIFICANCE

The Milton Cemetery was established in 1672, ten years after the incorporation of Milton as a town separate from Dorchester. The cemetery has been in continuous use since that time as the sole burying ground in Milton. Over its 330 years the landscape has evolved from the traditional New England burying ground, organized along linear lines, to a garden cemetery with gracefully winding avenues designed by noted landscape architects Robert Morris Copeland, Horace William Shaler Cleveland, and Ernest W. Bowditch according to the principles of the 19th century "rural" cemetery movement. The gravestones are a valuable collection of folk/burial arts which reflect the attitudes and tastes of the community over three hundred years. The work of several important carvers is represented, including the James Foster II, William Mumford, Henry Christian Geyer, Bartlett Adams and Augustus Saint-Gaudens.

(continued)

United States Department of the Interior
National Park Service

National Register of Historic Places Milton Cemetery
Continuation Sheet Milton (Norfolk), MA

Section number 8 Page 2

The ~~well-maintained Milton Cemetery retains integrity of location, design, setting, materials,~~
workmanship, feeling and association, and fulfills Criteria A and C, and Criteria Consideration
D of the National Register of Historic Places at the local level.

The Old Burial Ground: 1672-1854

Milton was settled as part of the Township of Dorchester as early as 1634. The primary focus of the initial settlement was along Adams Street on Milton Hill which overlooked the headwaters of the Neponset River. Adams Street, originally known as the Plymouth Road, was originally a native trail and improved as a regional highway from Boston to Plymouth in 1654. The settlement was called Unquityquisset, a name used by the Neponset Tribe of the Massachusetts Indians, who fished in the Neponset River and planted corn on Milton Hill during the Contact period (1500-1620). In 1662, upon the petition of its two hundred and fifty inhabitants, the Unquityquisset settlement was incorporated as the Town of Milton. Ten years later Milton established its burying ground. It was reached from the Adams Street by Churchills Lane. The road was initially a native trail and improved as a cart path in 1661. Milton's first meeting house had been built in ca. 1656 at the intersection of Adams Street and Churchills Lane. The first mention of Milton's burying ground is found in the Milton town records in 1672 as follows:

The 24 Feby. 1672. Robert Reedman was allowed to be payedd out of the towne Rate tene shillings to pay for forty rods of Land for the Burying Place ... and was agreed betwixed the Towne and Robert Reedman that the towne should fence out this forty rods of land, with a sufficient stone wall, within two years, from Robert Reedman's land. *Town Records, vol. i., page 1*

Before 1672 the tradition is that Milton buried its dead either in Dorchester or in one or more places within its own limits. Albert Teele in *The History of Milton* states that "the supposition is that the inhabitants had been using the field of Reedman for this purpose, and thus were led to fix upon this place as the common burial-ground."

The .25-acre Reedman Section (MAP #1A; MHC #800; Photograph #1) fronts on Centre Street opposite its intersection with Churchills Lane. It contains the oldest gravestones and tombs in the Milton Cemetery, documenting the settling families of the town, e.g. the Crehores, Wadsworths, Voses, and Tuckers. The slates stones are laid out in rows, establishing the linear pattern of the burial ground for the next 182 years. Notable among the carved stones are those attributed to William Mumford (ca.

(continued)

United States Department of the Interior
National Park Service

National Register of Historic Places **Milton Cemetery**
Continuation Sheet **Milton (Norfolk), MA**

Section number 8 Page 3

1640-1718), a Boston stonecutter, who lived on Copp's Hill in Boston. His work has been identified in the Granary and Copp's Hill Burial Grounds. As defined by Harriette Merrifield Forbes in *Gravestones of Early New England 1653-1800*, the Mumford style includes the following distinct characteristics: capital lettering, a death head with round hollow eyes, teeth squarely meeting and a nose made of two triangles, and a border with leaves and fruits descending from a simple rosette disc. Arthur Vose during his 1977 study of Milton's Old Burying Ground found these features on the stones of Christopher Wadsworth (d. 1687) (MAP #18; MHC #965; Photograph #17), the oldest surviving headstone in the Milton Cemetery, Thomas Rawlins (d. 1693) (MAP #19; MHC #966), Mary Wyat (d. 1705) (MAP #20; MHC #967) and Thomas Vose (d. 1708) (MAP #21; MHC #968).

Forbes also states that a number of stones carved by the Foster family of Dorchester are located in the original burial ground, although she does not identify them. Vose attributes the carving on the stones of Joseph Sumner (d. 1731) (MAP #22; MHC #969) and George Sumner (d. 1732) (MAP #23; MHC #970) to the family, probably James Foster II (1698-1763) based on known characteristics of the Foster Family's work in the Dorchester and Boston burial grounds.

The oldest tomb in the cemetery is set into the side of a small hill at the southwestern corner of the Reedman Lot. The tomb, identified by a large granite marker as belonging to the Fenno family (MAP #12; MHC #958), dates to about 1719, although it may have been rebuilt during the early 19th century. In 1719 it was one of three tombs that were approved by the Selectmen. The two other tombs for the Billings and Miller families have been filled in and grassed over.

At some point previous to 1729, a small addition, the .07-acre Ministerial Tomb Section (MAP #1B; MHC #800), was made to the easterly side of the Reedman Section. In that year Town Meeting approved the Thacher family's request to build a tomb for Rev. Peter Thacher (1651-1727), Milton's first minister, in this section. The site of the ministerial tomb is today identified by a marble marker.

The Colonial period (1675-1775) saw the development of Milton as a relatively large and prosperous agricultural town. By 1700 the population had doubled in size, reaching 743 inhabitants by the time of the first census in 1765. The town had established the policy of granting to each taxpayer a small burial plot, which he was expected to maintain. Thus the need for more burial space became evident during the first half of the eighteenth century. After several attempts to enlarge the burying ground in 1738, 1749 and 1751, the .725-acre Foye Section (MAP #1C; MHC #800) was deeded to the town in 1760 by

(continued)

United States Department of the Interior
National Park Service

National Register of Historic Places
Continuation Sheet

Milton Cemetery
Milton (Norfolk), MA

Section number 8 Page 4

~~Elizabeth Foye. The L-shaped section is located on the westerly and southerly sides of the Reedman~~ Section and the supposition is that it was already being used for burials. Elizabeth was the widow of William Foye (d. 1759), the provincial treasurer of the Massachusetts Bay Colony who maintained an estate on Milton Hill.

In 1761/1762 the burial ground was re-fenced with a stone wall that included an entrance from Centre Street opposite Churchills Lane. The entrance site remained intact when the stone wall was rebuilt in 1869 with a dual cart and pedestrian entrance. Town records for this period also note that during the 1760s sheep were allowed to feed in the burial ground to subdue the bushes and briars. The carvings of two stonecutters are found in the Foye Section. Henry Christian Geyer signed the slate stone for Seth Sumner (d. 1771) (MAP #24; MHC #971; Photograph #18). Geyer (d. by 1791) lived in Boston's South End and had a workshop near Washington Street. His work has been identified in the Granary Burial Ground. The Sumner stone displays several characteristics of his work including the crowned, winged heads of cherubs set in an unusual profile. B. Adams signed the slate stone of Samuel Bent (d. 1797) (MAP #25; MHC #972; Photograph #19). He has been identified as Bartlett Adams by Theodore Chase in his book, *Gravestone Chronicles, II*. Adams migrated from Plymouth County to Portland, Maine in 1800 where the stone he carved for his son has been identified.

The next enlargement of the burial ground was made in 1794 with the addition of the 3/4-acre How/Vose Section (MAP #1D; MHC #800). Josiah How (d. 1792) was a deacon in the Milton church and served the town both as selectman and treasurer. In the How Section, located directly to the rear of the Foye Section, slate stones still predominate, although the designs had evolved from the earlier death and spirit heads to the classical urn and willow. Upright tombs were located in a row along the rear of the How Section. In 1799 Edward H. Robbins (1758-1829), Lieutenant-Governor of Massachusetts, was granted permission by Town Meeting to build the first tomb in the row. In 1886 the cemetery trustees began to convert the tombs to burial plots, using the granite lintels to mark the burial sites. Seven granite lintels with carved names remain, including that of Robbins. On the western side of the How Section a strip of land was reserved for a lane, Walnut Avenue, once graveled, now grassed over. The Vose Section is located on the easterly side of the Foye and How Sections and was reserved for tombs. Nine single horizontal and three banks of vertical granite tombs (MAP #13 ; MHC #959) are extant bearing the names of prominent Milton families. Col. Joseph Vose (1739-1816) was a descendant of one of the founding families of Milton and served with distinction in the American Revolution.

In 1837 the 1/4 -acre First Amory Section (Map #1E; MHC #800; Photograph #2) was conveyed to the town by Francis Amory, a Milton resident who maintained an estate on Canton Avenue. The lot faces

(continued)

United States Department of the Interior
National Park Service

National Register of Historic Places Milton Cemetery
Continuation Sheet Milton (Norfolk), MA

Section number 8 Page 5

Centre Street and is located along the western border of the original burial ground from which it is separated Walnut Avenue. On several town maps the Reedman-Foye-How-Vose Sections are labeled as the "Old, Old Burial Grounds" and the First Amory Section as the "Old Burial Grounds." Granite and limestone stones predominate as well as seven obelisks. Of note is the elaborate granite memorial to the Whitcher Family (MAP #26; MHC #973). Joseph Whitcher (1815-1862) was a stone cutter, who had lived in East Milton, a section of Milton that evolved around the Granite Railway and the West Quincy granite quarries. One of Whitcher's most notable local projects was the granite facade of the 1844 Quincy Town House, today's City Hall. It is thought that he made the memorial to his family with the first burial in 1841. In 1859 the Baxter (MAP #14; MHC #960; Photograph #16) family built a vertical granite tomb at the rear of this section, across Walnut Avenue, from the row of How Lot vertical tombs.

Until 1837 very little information is found on the burying ground in the town records. In that year Milton began publishing annual town reports and the growth of the cemetery is more fully documented, beginning with the construction of a hearse house in 1837. This building was converted into a tool house in 1899, and at an unknown date thereafter was demolished. Also in 1837 two iron gates were added at the Centre Street cart entrance. The extant 19th century iron gates (MAP #28; MHC #975) possibly date to 1837 or to 1869 when the granite block stone wall and entrance were rebuilt. In 1841 Edmund J. Baker was paid for preparing a plan of the burying ground, which is not extant, but incorporated into the 1877 Whitman and Breck Plan. Maintenance and improvement activities are noted, e.g. the addition of maple and elm streets, the clearing of paths, and the repairing of the ministerial tomb. In 1846 19 rods of roads were laid out and it is thought that two paths running along the front and back of the Old Burial Ground and the path connected them along Willow Avenue date to this construction, although now grassed over. The rear path, Nanepashemet Avenue, was named after Sachem Nanepashemet, the chief of the Neponset Indians who lived during the contact period (1500-1620) on Milton Hill. By 1853 the burying ground was being called Milton Cemetery and came under the supervision of a paid superintendent.

The New Cemetery (1854-1945)

Milton at mid-century was not very different from what it had been a quarter of a century earlier, a small town with a population of 2,600 largely composed of farmers. However a new era in the development of the town was just commencing with the arrival of the railroad in 1847. Commuting a short half hour to work in Boston now became practical. Over the next forty years Milton evolved from a farming

(continued)

United States Department of the Interior
National Park Service

National Register of Historic Places Milton Cemetery
Continuation Sheet Milton (Norfolk), MA

Section number 8 Page 6

community to a wealthy suburb of Boston with a population of 3,600 full-time residents. Milton also saw the development of summer estates for families who wintered in Boston.

To meet the present and future needs for burial space, the town purchased in 1854 the Second Amory Section (MAP #1F; MHC #800) of 18.725 acres located to the rear and west of the Old Burial Ground. The New Cemetery, as it was called, extended southerly down a hill through a swampy valley fed by Unquity Brook and up over a rear hill. The back of the new lot was an inconvenient distance from the main entrance on Centre Street and required an additional entrance. Thus in 1858 the Town bought from Joseph McKean Churchill (1821-1886), a prominent Milton citizen, an acre of land, the First J. Churchill Section (MAP #1G; MHC #800), to open up the rear of the New Cemetery to Gun Hill Street. The present Gun Hill Entrance iron gates (MAP #C; MHC #976) were a private gift to the cemetery in 1997.

The design of the new burial space was radically different from that of the Old Burial Ground as it incorporated the new ideas of the "rural" cemetery movement. In 1856 the landscape architectural firm of Copeland and Cleveland was hired to design the New Cemetery. The plan is not extant, but was incorporated into the 1877 Whitman and Breck Plan. It can be inferred from the annual reports as well as from the 1877 Whitman and Breck Plan that the ideas of Copeland and Cleveland were substantially followed and remain intact. Horace William Shaler Cleveland (1814-1900) has been credited, along with Frederick Law Olmsted, with developing landscape architecture in America into a recognized profession. He was one of the major innovators in the romantic "rural" or garden cemetery movement. In 1854 Cleveland began a practice in landscape and ornamental gardening with Robert Morris Copeland (1830-1874). Two of their first important commissions were the designs for Oak Grove Cemetery in Gloucester in 1854 and Sleepy Hollow Cemetery in Concord in 1855. After their partnership was dissolved during the Civil War, Copeland remained in Boston where he maintained a successful practice, while Cleveland moved to Chicago and was largely responsible for expanding the popularity of the garden cemetery into the Midwestern states.

Copeland and Cleveland were critics of the formal and rigid quality of the traditional burial ground. The firm advocated the application of the principles of landscape gardening to cemeteries, including the "tasteful disposition of trees and shrubs, with graceful adaptation of the roads and paths to the natural contours of the ground." Over the next twenty years, fourteen graceful and winding avenues with associated paths, the hallmarks of the firm's style and philosophy, were laid out in the New Cemetery by Charles Breck and Son, a prominent Milton survey firm, and remain substantially intact to this day. The naming of the roadways after trees, e.g. Willow, Elm, Hemlock, Oak, Laurel, etc. is thematic of garden

(continued)

United States Department of the Interior
National Park Service

National Register of Historic Places Milton Cemetery
Continuation Sheet Milton (Norfolk), MA

Section number 8 Page 7

cemeteries. During 1860 a new entrance (Photograph #3) with iron gates opened up off Centre Street along Willow Avenue. The present Centre Street-Willow Avenue iron gates (MAP #D; MHC #977; Photograph #3) were made by G & S Iron Works of Hyde Park and were hung during the Fall of 1996 to replace chainlink gates. The New Cemetery was informally planted with both evergreen and deciduous trees and ornamental shrubbery. The layout was substantially completed in 1873 when the rear hill was finished. Centennial Avenue was added in 1877 over existing roadways, followed by Pine Avenue in 1878. It is unknown if the 1883 duck pond (MAP #2; MHC #955; Photograph #5) in the Second Amory Section, discussed below, was part of the Copeland and Cleveland design or later Whitman and Breck plan.

Granite continued to be the material of choice for gravestones and monuments. Currently, the only noted designer of a gravestone in this area is Augustus Saint-Gaudens (1848-1907), the sculptor of the Robert Gould Shaw and the 54th Massachusetts Regiment Bronze Memorial (1897) in Boston. In ca. 1890 he carved the marble headstone for Dennis Miller Bunker (1861-1890) (MAP #27; MHC #974; Photograph #10) a well-known Boston artist, whose father-in-law, Alpheus Sumner Hardy, summered in Milton.

At the March 1874 Town Meeting, the trustees of the cemetery were authorized to purchase 12 acres of land, the C. Churchill Section (MAP #1H; MHC #800; Photograph #4), from Charles M. S. Churchill lying on the easterly side of the Second Amory Section and extending from Centre Street to the rear of the grounds. Whitman and Breck, a Milton survey and engineering firm, was responsible for designing the new section to "harmonize" with the Copeland and Cleveland design. The 1877 *Plan of Milton Cemetery; Compiled from Old Plans and Surveys* by Whitman and Breck is extant. In 1874 the new section was enclosed with a granite block stone wall (MAP #16; MHC #963) along Centre Street and in 1877 connected to the 1854 and 1858 sections of the New Cemetery via a new avenue. The avenue wound its way from a new entrance on Centre Street, which continues to be the main entrance to the cemetery, through the Unquity Brook valley and up over the rear hill to the Gun Hill entrance. The avenue was named Centennial Avenue (MAP #17; MHC #964) in honor of the centennial anniversary of the United States. During the spring of 1877 memorial trees, e.g. Norway maples (many extant), were planted along the avenue. The landscape of Whitman and Breck remains significantly intact. An alteration was made in 1970 when Locust Avenue was laid out above Unquity Brook that was placed underground via a culvert. In 1878 Morss and Whyte fashioned gates for the new entrance. The present Centre Street-Centennial Avenue iron gates (MAP #E; MHC #978) were made by Brayton-Wilson-Cole

(continued)

United States Department of the Interior
National Park Service

National Register of Historic Places Milton Cemetery
Continuation Sheet Milton (Norfolk), MA

Section number 8 Page 8

of Roxbury and hung in the spring of 1996. In 1892 the avenues and paths throughout the whole cemetery were marked with decorative cast iron street signs (MAP #29; MHC #979).

Notable features of the C. Churchill Section include an oval plat on the rear hill that was designed for 224 single and charitable graves. In 1882 Henry P. Kidder presented the cemetery trustees with a white Italian marble angel (sculptor unknown) (MAP #30; MHC #980; Photograph #9) to grace the center of this section. Kidder (b. 1822) was a prominent Milton citizen with an estate on Adams Street. He was a founder of Kidder, Peabody and Company, one of Boston's leading banking houses. A new receiving tomb (MAP #15; MHC #961; Photograph #8) was built in 1879 at the base of the hill at the intersection of Elm, Willow and Centennial Avenues by the firm of O. T. Rogers and Company, a West Quincy granite firm. The company was founded by Octavius Rogers (d.1859), who lived in East Milton and owned a granite quarry in West Quincy.

The 1877 Whitman and Breck plan shows three ornamental ponds along Unquity Brook, one in the 1854 Second Amory Section and two in the 1874 C. Churchill Lot. The town reports only discuss the excavation of the duck pond in the 1854 Section in the year 1883. That the other two were never constructed is confirmed by Walker's 1896 Town of Milton Atlas. Today, the duck pond (MAP #2; MHC #955; Photograph #5) is an important feature in the landscape of the cemetery. The 1877 plan also shows an ornamental lake in the valley along the rear boundary of the both the 1854 and 1874 Sections, accessed by Lake Avenue. Neither the lake nor avenue were ever laid out and today the area remains undeveloped.

By 1866 the cemetery, once under the supervision of the Board of Selectmen, was administered by a separate town committee, which in 1871 took on its present name, Cemetery Board of Trustees. A small office and tool house was constructed for the trustees on the grounds of the cemetery in 1868. No further reference was made to this building in the town reports after 1877 and it is unknown when it was demolished.

In 1888 the cemetery trustees bought two pieces of land. The Second J. Churchill Section (Map #11; MHC #800) measuring about 2.5 acres abutted the Gun Hill entrance. It was bought from Joseph's widow, Augusta, after his death in 1886.

The second .53-acre section was the former How-Sumner property at the corner of Centre Street and Randolph Avenue, which Charles Copeland had bought in 1886 and sold with the house to the cemetery

(continued)

United States Department of the Interior
National Park Service

National Register of Historic Places Milton Cemetery
Continuation Sheet Milton (Norfolk), MA

Section number 8 Page 9

trustees in 1888. In 1889 the trustees sold the How-Sumner house which was moved off the property and contracted with John Atherton Tucker and Son to build the Queen Anne Superintendent's House/Office (MAP #4; MHC #70; Photograph #6) and stable (MAP #5; MHC #716; Photograph #13) on the site. Tucker (1830-1916) was a noted Milton carpenter-builder with a home and shop at 954 Canton Avenue. The well-preserved house and stable are the only presently documented examples of his work. The present waiting room/office with a fireproof vault was added to the side of the house in 1921. In 1922 an 1890 carriage shed was replaced with present concrete block garage (MAP #6; MHC #717)

It is the oral tradition of the cemetery's history that many of the cemetery records were lost in a fire in ca. 1890. There is no documentation of the fire in the town reports. The 1927 town report does state that "The first internment in the Milton Cemetery, as recorded upon a head stone, was in 1687. No records, so far as the Trustees are aware, were kept for the next 200 years. The present records, started in 1880, are complete." To make up for the deficiency, the trustees thereupon undertook a project to copy the names and dates from the stones and monuments in the old burial grounds and catalogue them.

In 1897 a 22.39-acre tract the Peabody Section (MAP #1J; MHC #800) abutting the cemetery on the east was bought from the estate of Col. Oliver White Peabody. Peabody (1834-1896) was a prominent Milton resident, who was a trustee of the cemetery from 1872-1896. He was a founder of Kidder, Peabody and Company, one of Boston's leading banking houses, and maintained a summer estate on Adams Street. The property came with a gardener's house, and several greenhouses. The residence was initially rented and then demolished when the lot began to be developed in the 1920s for burial spaces. The greenhouses were sold and moved off the site.

In 1898 the cemetery trustees contracted with Ernest W. Bowditch to prepare a design for the Peabody Section that connected it harmoniously with the established cemetery and to maintain the park-like nature of the property with its informally planted trees and shrubs. Bowditch (1850-1918), a Milton resident, was a well-known landscape designer. In the fall of 1870, he was employed in the office of Shedd and Sawyer, a civil engineering firm, to work on laying out paths and driveways on the grounds of Mount Auburn Cemetery in Cambridge. This early exposure to America's first romantic cemetery was a strong influence on Bowditch's future design ideas. Bowditch was further influenced by his apprenticeship with Robert Morris Copeland in the early 1870s. Bowditch's practice included landscape designs for Newport summer resorts, wealthy residential subdivisions and parks, as well as municipal surveys for sewer and water supply design. The cemetery landscape is the only presently documented site in Milton that was designed by Bowditch.

(continued)

United States Department of the Interior
National Park ServiceNational Register of Historic Places
Continuation SheetMilton Cemetery
Milton (Norfolk), MASection number 8 Page 10

Bowditch's 1898 design (extant) was similar to the Copeland and Cleveland plan with gracefully curving avenues and associated paths from the front of the section along Centre Street down a hill through the swampy valley and up the rear hill. A pond was planned for the valley through which Unquity Brook flowed. A comparison of the Bowditch design with the present layout of the cemetery reveals that the plan was followed and remains significantly intact at both ends of the Peabody Section, most notably Soldiers' and Larch Avenues in front section and Circle Avenue in the rear. However, the Unquity Brook pond was not constructed. Alteration to the Bowditch plan was made in the middle section in 1970 when Unquity Brook was placed underground via a culvert for the purpose of developing the area for burial lots. Locust Avenue, a straight road, was laid out over the culvert, obliterating most of Dell Avenue, a curved avenue which originally mirrored Larch Avenue.

The development of the Peabody Section for burials began in 1920 with the establishment of a Soldiers' Lot (MAP #3; MHC #956; Photograph #12) encircled by Soldiers' Avenue. In the 1925 town report, the cemetery trustees reported that the land to the east and south of the Soldiers' Lot had been developed. Three years later the Milton Firemen Memorial (MAP #31; MHC #981) was placed at the base of Larch Avenue, to be followed in 1931 by the Milton Police Memorial (MAP #32; MHC #982). Nearby at the intersection of Larch and Rose Avenues, a maintenance complex was begun in 1929 with the construction of the granite Cemetery Building (MAP #7; MHC #718; Photograph #7) to provide lunch quarters for the workmen and storage space for cemetery equipment and supplies, a function it still serves. The granite maintenance garage #1 (MAP #8; MHC #719; Photograph #7) was constructed in 1936, funded by the Works Progress Administration. The wood shingle maintenance garage #2 (MAP #9; MHC #720; Photograph #7) was added in ca. 1950 after the 1945 purchase of the Brooks-Ladd Section on which it is sited. The corrugated aluminum maintenance garage #3 (MAP #B; MHC #721) completed this complex in 1994. The cemetery trustees also made use of another depression-era Federal program, the Emergency Relief Administration, to rebuild with a cement cap the 19th century fieldstone wall (MAP #16; MHC #963) along the Centre Street boundary of the Peabody Section in 1935.

The Modern Cemetery (1945-2002)

The 60-acre cemetery was enlarged once again in 1945 with the purchase of the 34.74-acre Ladd-Brooks Section (MAP 1K; MHC #800; Photograph #11) which is composed to two parts. J. Henry Brooks (d. 1913) was a prominent Milton citizen, who owned a large estate which fronted on Adams Street and extended back to Centre Street and Brook Road. The part of the Ladd-Brooks Section that fronts on

(continued)

United States Department of the Interior
National Park Service

National Register of Historic Places Milton Cemetery
Continuation Sheet Milton (Norfolk), MA

Section number 8 Page 11

Brook Road was once part of his estate and when purchased by the cemetery came with the Brooks coachman's cottage, dating to 1885. The dwelling was rented by the cemetery until 1953 when it was demolished, although foundation stones remain. This area has not been developed by the cemetery for burial lots.

The second part was the rear acreage of the estate of Alexander H. Ladd, who was a cemetery trustee. Development of this area for burial space began in 1946 with the laying out of Maple Avenue and was completed in the late 1970s with Butternut Avenue. Two additional acres were added in 1961 along the Murray Avenue border. Alteration to the design of this landscape occurred in 1970 when Locust Avenue was laid out over the Unquity Brook culvert and the northern of Maple Avenue was straightened out to connect with Coleus Avenue.

In 1962 the remaining section of the Alexander H. Ladd estate, the Ladd Section (MAP #A; MHC #800, Photograph #20), fronting on Centre Street and Brook Road, was bought by the cemetery trustees. This section is considered noncontributory because it was added within the last fifty years. With the property came three buildings, the 1912 Ladd residence, and a gardener's cottage (MAP #10; MHC #722; Photograph #14) and barn (MAP #11; MHC #723; Photograph #15), both dating to ca. 1875 when they belonged to Roberts S. Watson, Ladd's grandfather. In 1984 the Ladd House was razed after a major fire. A formal garden for cremation interment and funeral services (Photograph #20) has been constructed on the site during 1995-1999. The gardener's cottage continues to be rent and the barn used for storage of cemetery equipment. Significantly the lot continues to retain the original layout of the Ladd driveway.

Today the 102.13-acre Milton Cemetery is composed of two parts, the 101.6-acre burial ground with ca. 9000 gravestones and the adjoining .53-acre parcel with the Superintendents' Residence/Office. It continues to serve the citizens of Milton and their families with land for expansion for the next 30 years. The present Cemetery Board of Trustees and the superintendent are actively maintaining, preserving and promoting this historic landscape.

Archaeological Significance

Although several ancient Native American sites have been recorded in Milton, many have been destroyed and most have not been systematically investigated limiting their interpretative value and

(continued)

United States Department of the Interior
National Park Service

National Register of Historic Places **Milton Cemetery**
Continuation Sheet **Milton (Norfolk), MA**

Section number 8 Page 12

making any surviving sites in the town potentially significant. One ancient site in Milton, the Massachusetts Hornfels/Braintree Slate Quarry (19-NF-105) is listed on the National Register as a specialized quarry complex. Our knowledge of Milton's Native American village and campsite settlement is less documented. Ancient sites in the Milton locale may contribute information on the effects of sea level rise through time on Native subsistence and settlement patterns in the area. Ancient sites in the area may also contribute important information to better understand Woodland and Contact Period Native land use in the estuarine zone of the Neponset River. Archaeological sites in this area may also contain evidence of Native American and European culture contact during the early to mid 17th century. Early European settlement in the Milton Cemetery/Milton Hill locale may have been sited at earlier Contact Village locations.

Historic archaeological resources described above have the potential to contribute important information on the social, cultural, and economic patterns that characterized the Town of Milton and its inhabitants as they developed from a rural agricultural community to a prosperous suburb of Boston. Archaeological resources may also help document the evolution of the cemetery from a traditional New England burial ground organized along linear lines to a garden cemetery with generally winding avenues organized along the principals of the 19th century "rural" cemetery movement. Structural evidence associated with residences and outbuildings may contribute important information related to the internal configuration of 17th and 18th century farms and later estates. Any evidence related to Milton's 17th century settlement would be especially important since no examples from that period survive.

Detailed analysis of the contents of occupational related features associated with structures originally located on cemetery property may contribute important information related to the activities that occurred in residences and farms and the individuals that occupied the structures. Occupational related features may contain evidence related to 17th and 18th century agricultural techniques and technologies, lifeways, ethnicity, and social class.

Archaeological survey and testing may also contribute evidence of post-holes, buried fragments of stone walls and unmarked graves that help document boundary changes and burial practices at the cemetery. Careful mapping of post hole distributions and stone wall fragments may help reconstruct fence lines and boundary changes in the overall cemetery and in its internal subdivisions possibly including family and religious burial areas. The location of unmarked graves may also help document burial subdivisions in the cemetery and peripheral areas since unknown persons, paupers and other indigent persons were often buried outside or at the periphery of the cemetery.

(end)

United States Department of the Interior
National Park Service

National Register of Historic Places
Continuation Sheet

Milton Cemetery
Milton (Norfolk), MA

Section number 9 Page 1

9. MAJOR BIBLIOGRAPHICAL SOURCES

Birnbaum, Charles A. and Karson, Robin. *Pioneers of American Landscape Design*.
New York: McGraw-Hill, 2000.

Chase, Theodore and Gabel, Laurel K. *Gravestone Chronicles, II*. Boston: New
England Historic Genealogical Society, 1997.

Desmond-Sills, Therese, Superintendent of the Cemetery.

Forbes, Harriette Merrifield. *Gravestones of Early New England and the Men Who
Made Them 1653-1800*. Boston: The Riverside Press, 1927.

Hamilton, Edward Pierce. *A History of Milton*. Milton: Milton Historical Society, 1957.

Massachusetts Historical Commission. Oak Grove Cemetery and Sleepy Hollow Cemetery National
Register Nominations

Milton Annual Town Reports 1837-2000.

Milton Historical Society Archives: Map and Plan files; Resident Directories;
Births/Marriages/ Deaths 1662-1910.

Milton News Newspaper: 1882-1904

Milton Record and *Milton Record-Transcript* Newspaper: 1904-2000.

Milton Town Department Records: Assessor's Office; Building Department;
Cemetery Office; Engineering Department.

Milton Town Records 1662-1842.

(continued)

Milton Cemetery
Name of Property

Norfolk, MA
County, State

10. Geographical Data

Acreage of Property 102.13 acres

UTM References See continuation sheet.

(Place additional UTM references on a continuation sheet)

1. 19	329360	4680100	3. 19	330380	4680760
Zone	Easting	Northing	Zone	Easting	Northing
2. 19	330460	4681200	4. 19	329660	4680500
Zone	Easting	Northing	Zone	Easting	Northing

— See continuation sheet

Verbal Boundary Description

(Describe the boundaries of the property on a continuation sheet.)

Boundary Justification

(Explain why the boundaries were selected on a continuation sheet.)

11. Form Prepared By

name/title Edith Clifford, consultant, Milton Historical Commission with Betsy Friedberg, NR Director, MHC

organization Massachusetts Historical Commission date April 2004

street & number 220 Morrissey Boulevard telephone 617-727-8470

city or town Boston state MA zip code 02125

Additional Documentation

Submit the following items with the completed form:

Continuation Sheets

Maps

A **USGS map** (7.5 or 15 minute series) indicating the property's location.

A **sketch map** for historic districts and properties having large acreage or numerous resources.

Photographs

Representative **black and white photographs** of the property.

Additional items (Check with the SHPO or FPO for any additional items)

Property Owner

(Complete this item at the request of the SHPO or FPO.)

name Town of Milton, MA

street & number 525 Canton Avenue telephone 617-696-5000

city or town Milton state MA zip code 02186

Paperwork Reduction Act Statement: This information is being collected for applications to the National Register of Historic Places to nominate properties for listing or determine eligibility for listing, to list properties, and to amend existing listings. Response to this request is required to obtain a benefit in accordance with the National Historic Preservation Act, as amended (16 U.S.C. 470 et seq.).

Estimated Burden Statement: Public reporting burden for this form is estimated to average 18.1 hours per response including the time for reviewing instructions, gathering and maintaining data, and completing and reviewing the form. Direct comments regarding this burden estimate or any aspect of this form to the Chief, Administrative Services Division, National Park Service, P.O. Box 37127, Washington, DC 20013-7127; and the Office of Management and Budget, Paperwork Reductions Project (1024-0018), Washington, DC 20503.

United States Department of the Interior
National Park Service

National Register of Historic Places Milton Cemetery
Continuation Sheet Milton (Norfolk), MA

Section number 9/10 Page 2/1

Newton, Norman T. *Design on the Land: The Development of Landscape Architecture*. Cambridge, MA: Harvard University Press, 1971.

Teele, Albert K. *The History of Milton, MA*. Boston: Rockwell and Churchill Press, 1887.

Vose, Arthur. *The Old Burying Ground, Milton Massachusetts: Catalogue and Maps*. Milton, 1977.

(end)

10. GEOGRAPHICAL DATA

Verbal Boundary Description

The boundaries of the Milton Cemetery are outlined on the enclosed assessor's maps (2 sheets: Section I – Block 32 & 35). The 102.13-acre district is bounded by Centre Street and Brook Road in the north and Gun Hill Street in the west.

Boundary Justification

The boundaries of the Milton Cemetery were drawn to include the entire property owned by the Town of Milton for burial purposes.

(end)

**United States Department of the Interior
National Park Service**

National Register of Historic Places Milton Cemetery
Milton (Norfolk), MA
Continuation Sheet

Section number photos Page 1

PHOTOGRAPHS

The identification information listed below pertains to all photographs.

Photographer: Nancy P. Roberts
Location of Negatives: Milton Town Hall
Date of Photographs: October 2001

8 X 10" PHOTOGRAPHS

1. Old Burial Ground, looking southeast from Centre Street.
2. Old Burial Ground, looking south from Centre Street.
3. Willow Avenue Entrance, looking southeast from Centre Street.
4. New Cemetery, looking west along Anemone Avenue from Centennial Avenue
5. Duck Pond, looking west from Centennial Avenue
6. Superintendent's House and Office, looking southeast from Centre Street
7. Maintenance Complex, looking east from Larch Avenue
8. Receiving Tomb, looking north from Centennial Avenue
9. Marble Angel, looking southeast from Circle Avenue
10. Dennis Miller Bunker Gravestone, Lily Path, between Pine and Oak Avenues

5 X 7" SUPPLEMENTARY PHOTOGRAPHS

11. Modern Cemetery, looking northeast from Maple Avenue
12. Soldiers' Lot, looking north from Soldiers Avenue
13. Superintendent's Stable, looking northwest from Willow Avenue
14. Watson Gardener's Cottage, looking southwest from Paradise Avenue
15. Watson Barn, looking west from Paradise Avenue
16. Baxter Tomb, looking south towards Shamrock Avenue from Old Burial Ground-First Armory Lot
17. Christopher Wadsworth Gravestone, Old Burial Ground-Reedman Lot

(continued)

United States Department of the Interior
National Park Service

National Register of Historic Places Milton Cemetery
Continuation Sheet Milton (Norfolk), MA

Section number photos Page 2

18. Seth Sumner Gravestone, Old Burial Ground-Foye Lot
19. Samuel Bent Gravestone, Old Burial Ground-Foye Lot

Non-Contributory

20. New Cemetery: Ladd Lot with Cremation Internment Garden, looking north from Beech Avenue

(end)

UNITED STATES DEPARTMENT OF THE INTERIOR
NATIONAL PARK SERVICE

NATIONAL REGISTER OF HISTORIC PLACES
EVALUATION/RETURN SHEET

REQUESTED ACTION: NOMINATION

PROPERTY NAME: Milton Cemetery

MULTIPLE NAME:

STATE & COUNTY: MASSACHUSETTS, Norfolk

DATE RECEIVED: 4/20/04 DATE OF PENDING LIST:
DATE OF 16TH DAY: DATE OF 45TH DAY: 6/03/04
DATE OF WEEKLY LIST:

REFERENCE NUMBER: 04000537

REASONS FOR REVIEW:

APPEAL: N DATA PROBLEM: N LANDSCAPE: N LESS THAN 50 YEARS: N
OTHER: N PDIL: N PERIOD: N PROGRAM UNAPPROVED: N
REQUEST: N SAMPLE: N SLR DRAFT: N NATIONAL: N

COMMENT WAIVER: N

ACCEPT RETURN REJECT 6/2/04 DATE

ABSTRACT/SUMMARY COMMENTS:

**Entered in the
National Register**

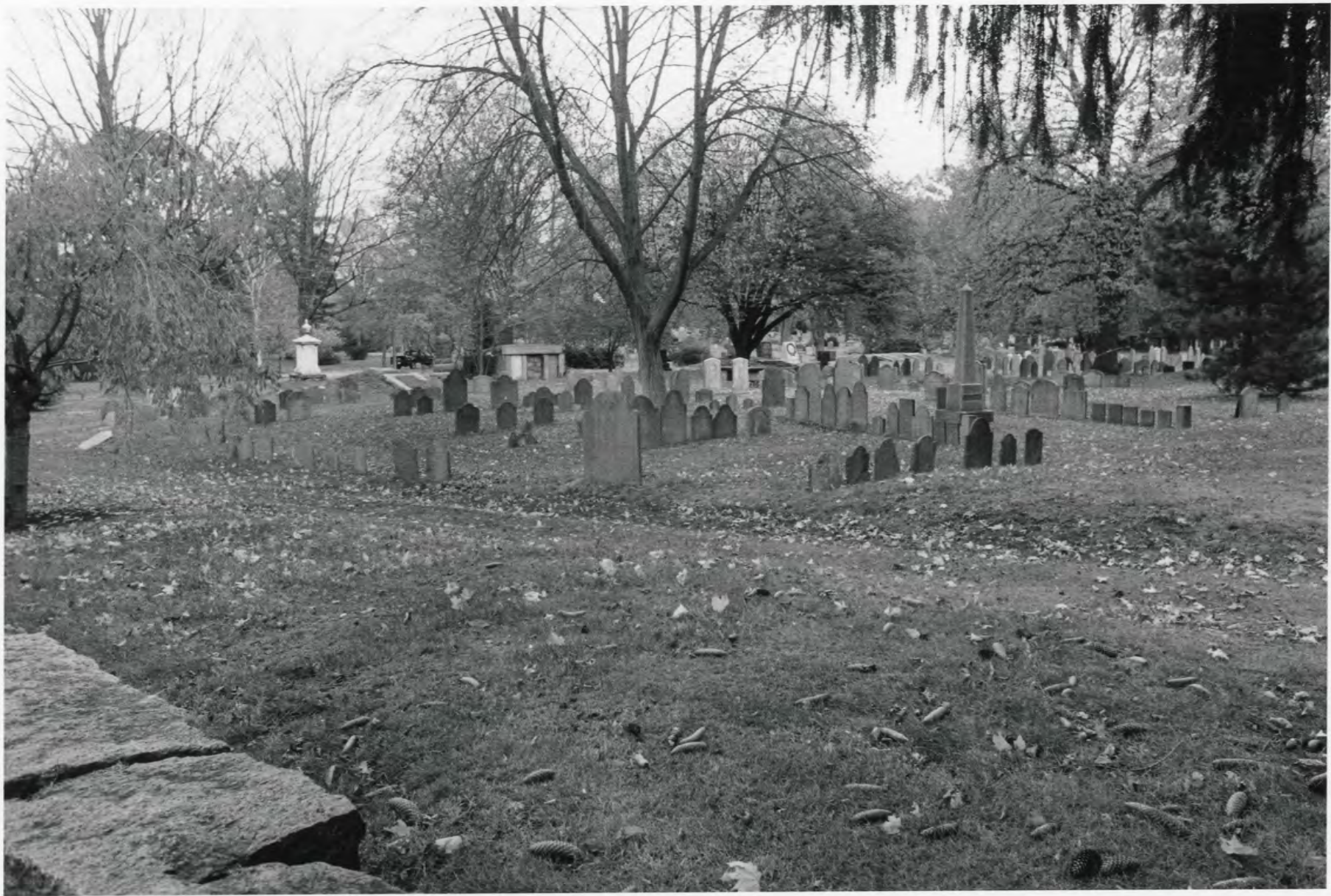
RECOM./CRITERIA _____

REVIEWER _____ DISCIPLINE _____

TELEPHONE _____ DATE _____

DOCUMENTATION see attached comments Y/N see attached SLR Y/N


If a nomination is returned to the nominating authority, the nomination is no longer under consideration by the NPS.



Old Burial Ground
Milton Cemetery
Norfolk, MA
Nancy Roberts photog.
Oct 2001
Milton Town Hall (Opp.)
looking southeast from
Centre St.
#1 of 20 photographs



Old Burial Ground
Milton Cemetery
Norfolk, MA
Nancy Tebbel, photos.
Oct 2001
Milton Town Hall (Nags)
looking south from
Brake St
2 of 20 photographs



MILTON
CEMETERY
HOURS
8:00 AM TO 4:30 PM

Willow Ave Entrance
Milton Cemetery
Norfolk, MA
Nancy Roberts photos
Oct 2001
M. Hon Tom Hall (Ness.)
looking south east from
Center St
3 of 20 photographs



New Cemetery
M.H. Cemetery
Norfolk, VA
Nancy Roberts, photo
Oct 2001
M.H. San Hall (Mass.)
Looking west along Anemone
the Sun Cemetery the
#4 of 20 photographs



Duck Pond
Milton Cemetery
Norfolk County,
King Edward, photo.
Oct 2001
Milton Top Hall (Opp.)
looking west from Centennial Ave
5 of 20 photographs



Superintendent's House/office
Milton Cemetery
Norfolk, MA
Nancy Roberts, photos
Oct 2001
Milton Town Hall (legs)
looking south ~~west~~ from center
6 of 20 photographs



Maintenance Complex
Milton Cemetery
Nobles, MA
Nancy Roberts, photo
Oct 2001
Milton Town Hall (Mass)
looking east from launch line
7 of 20 photographs



Receiving Tomb

Milton Cemetery

Norfolk, VA

Vera Street, photos

Oct 2001

M. H. Tan Hall (Mass)

looking North from entrance/area

8 of 20 photographs



Marble Angel
Milton Cemetery
Natick, MA
Among B. B. B. photos
Oct 2001
Milton Town Hall (Nags)
looking southeast from
Circle One
9. of 20 photographs



IN MEMORIAM
DENNIS MILLER
BUNKER
BORN NOVEMBER VI
MDCCLXI
DIED DECEMBER
XXVIII MDCCCXC

Denner Mills Bunker Gravestone
Milton Cemetery
Norfolk, MA
Nancy Baker, photo
Oct 2001
Milton Town Hall (also)
10 of 20 photographs



Modern Cemetery
Mudon Cemetery
Norfolk, MA
Nancy R. Lee, photo
Out door
Mudon Town Hall (Nes)
Looking Northeast
from Maple Ave
11 of 20 photographs



Soldiers Plot
Mildon Cemetery
Norfolk, MA
Nancy Roberts photo
Oct 2001
M. Tom Tea Hill (Hess)
looking North from
Soldiers Ave
12 of 20 photos



Superintendent's stable
Milton Cemetery
Norfolk, VA

Nancy Roberts photo
Oct 2001

Milton Town Hall (Cross)
looking Northwest from Willow Curve
13 of 20 photographs



Watson Gardens Cottage
Milton Cemetery
Napah MA
Nancy Ribes, photo
Oct 2001

Milton Town Hall (legs)
looking southwest from Archelme
14 of 20 photographs

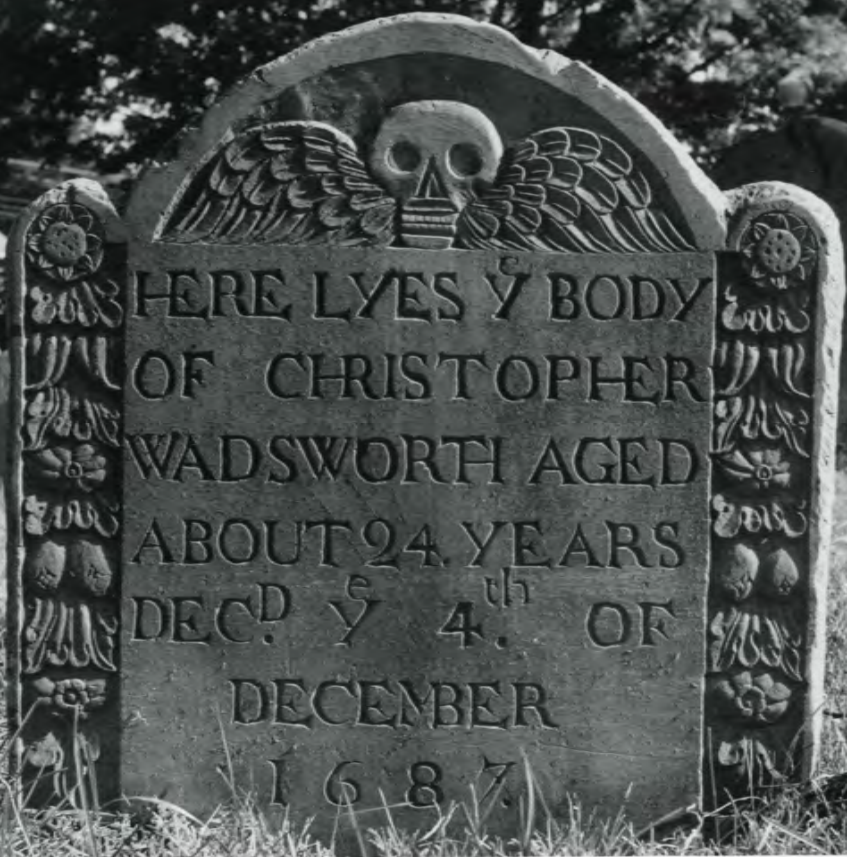


Water Barn
Meldon Cemetery
Norfolk MA
Nancy Robert photo
Oct 2001
Methuen Hall (Mass)
looking west from Parakee Ave
#15 of 20 photographs



M. Am Toul Hill
(legs)

Barta Tomb
Milton Cemetery
W. Fall Ma
Nancy Peters, photo
Oct 2001
16 of 20 photographs

A black and white photograph of a gravestone for Christopher Wadsworth. The stone is rectangular with a decorative arch at the top. Inside the arch is a carving of a skull with wings. The sides of the stone are decorated with vertical panels of floral and scrollwork carvings. The text is carved in a serif font.

HERE LYES ^e BODY
OF CHRISTOPHER
WADSWORTH AGED
ABOUT 24 YEARS
DEC^d ^e 4th OF
DECEMBER
1687

Walsworth Gravesite

M. W. Emery

Norfolk, VA

Long Island photo

Oct 2001

Milton Tan Hall (negs)

17 of 20 photos



Marianne Burdette Burdette

Sister of Mrs. W. H. Burdette

Who departed this life May 27

1867 aged 70 years

Rest in peace

Her remains were

interred in the

burial vault

of the

Methodist

Church

Sumner Gewecke
Meth Comby
Infalt #
Nancy Ribest photo
Oct 2001

Milton Tom Hau (Rep.)
189 20 photoprnts



Erected

in memory of

MR. SAMUEL BENT

who died Dec 14, 1797

aged 26 years

[Faint, illegible text, likely an epitaph or record of the stone's erection]

Bent Grewster
Medin Cemetery
Malak MA
Agency Photos photo
Oct 2001
Milton Ten Hall (Miss)
19 of 20 photographs



New Cemetery - Cremation Internment
Garden

Milton Cemetery

Malden, MA

Many Rivers, Photo

Oct 2001

Milton Town Hall (Maps)

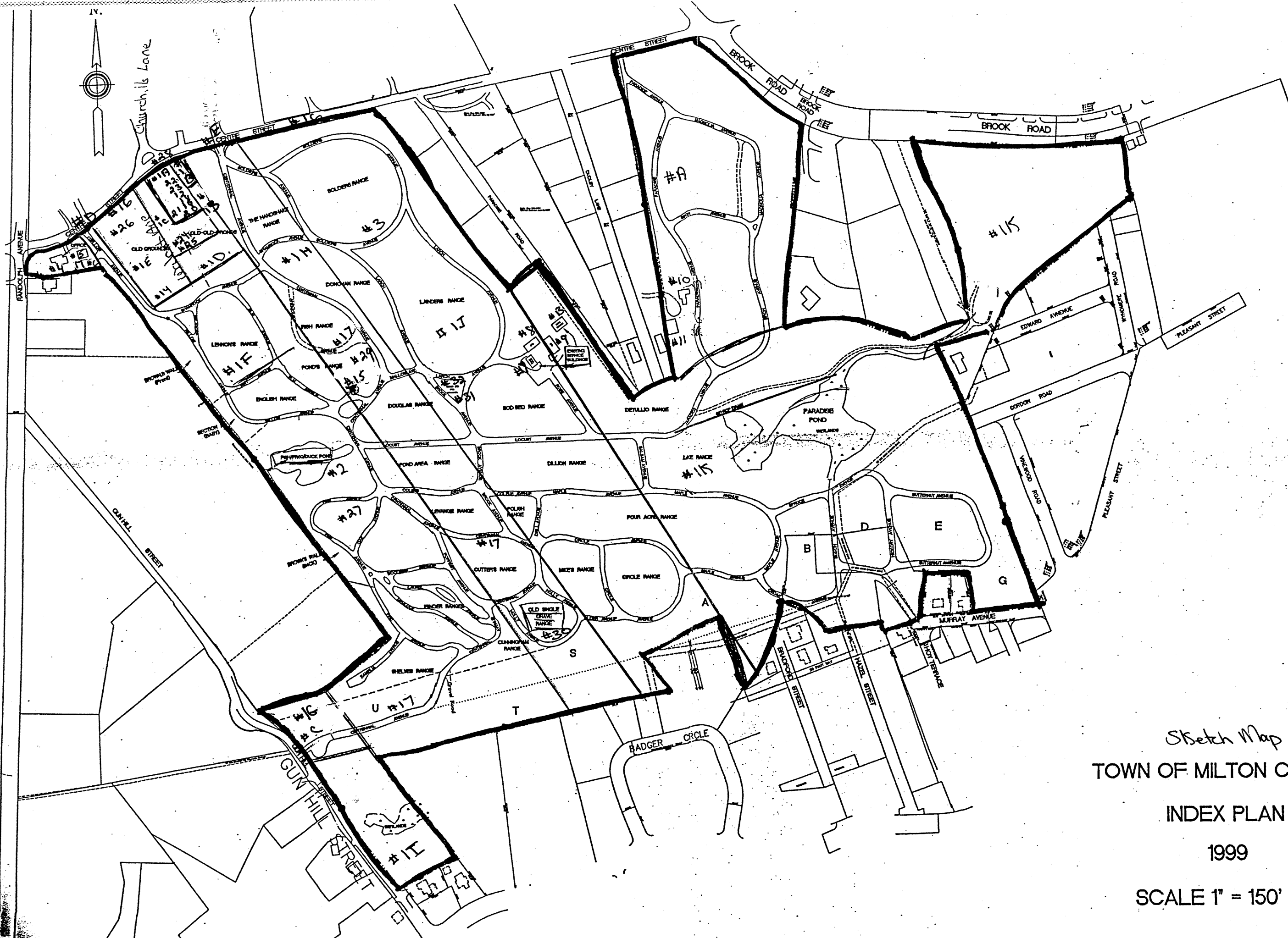
#20 of 20 photos

(none contributed)

Looking north from Beech Ave

res

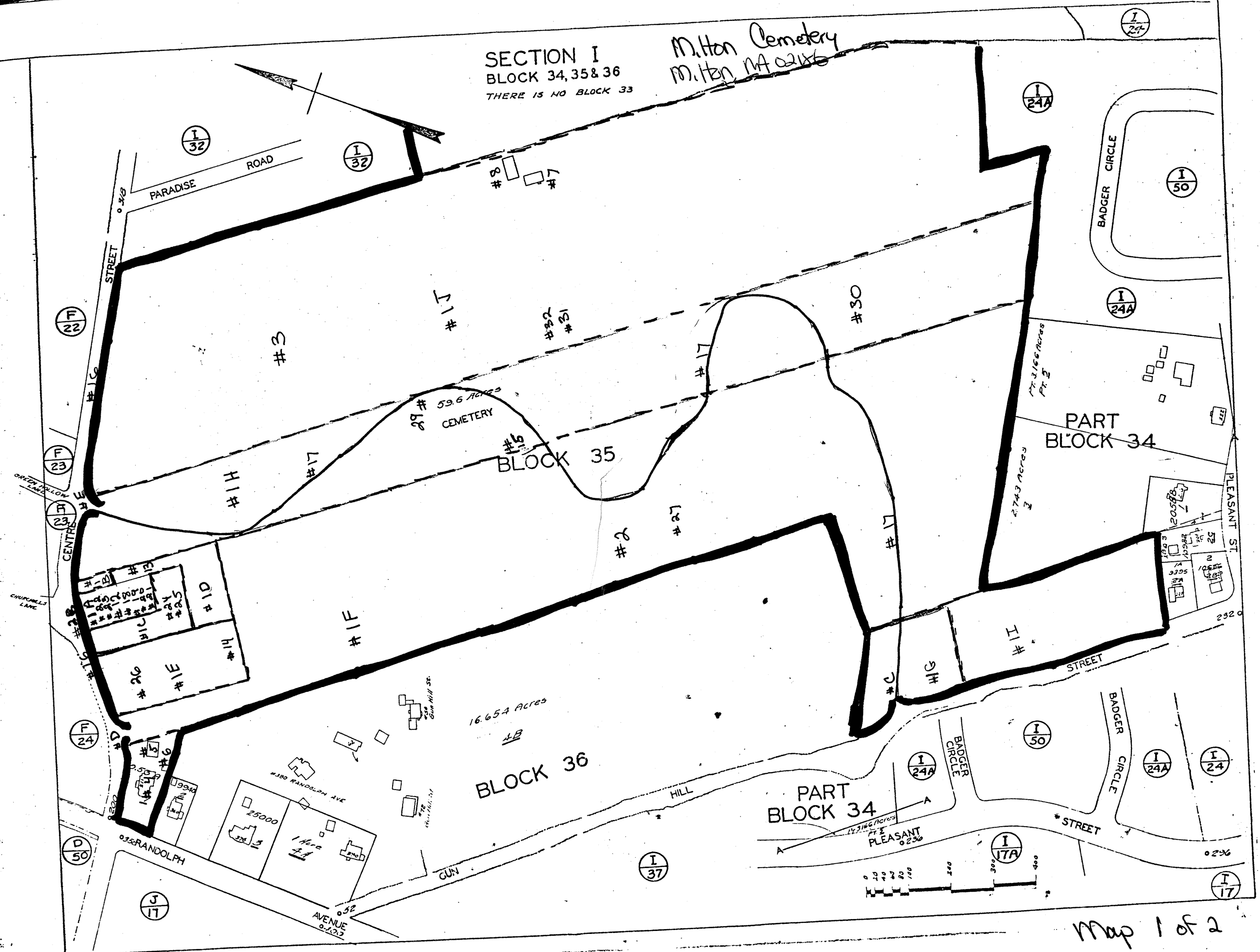
res



Sketch Map
 TOWN OF MILTON CEMETERY
 INDEX PLAN
 1999
 SCALE 1" = 150'

SECTION I
BLOCK 34, 35 & 36
THERE IS NO BLOCK 33

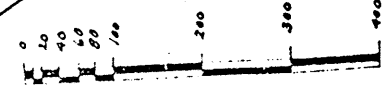
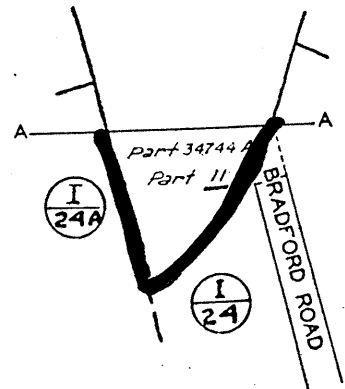
Milton Cemetery
Milton MA 02186

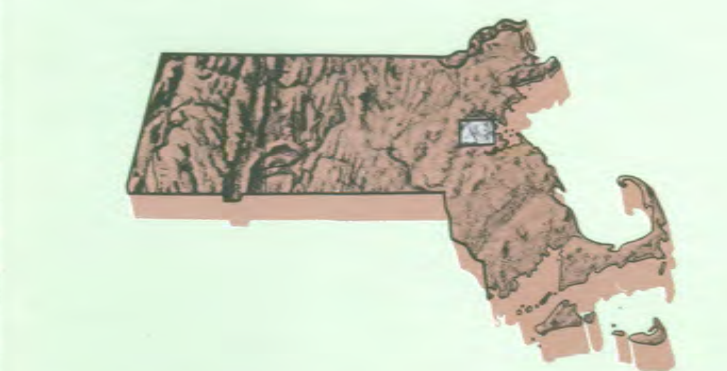


SECTION I
BLOCK 32

NOTE NO BLOCK 33

Milton Cemetery
Milton, MA





7.5 X 15 MINUTE QUADRANGLE SHOWING

- Contours and elevations in meters
- Highways, roads and other manmade structures
- Water features
- Geographic areas
- Geographic names



Produced by the United States Geological Survey in cooperation with Massachusetts Department of Public Works, Control by USGS, NOS/NOAA, and Commonwealth of Massachusetts agencies.

Compiled by photogrammetric methods from aerial photographs taken 1976. Field checked 1979. Map revised 1987. Superadded Newton and Boston South 1:25,000-scale maps dated 1970.

Selected hydrographic data compiled from NOS charts 13270 (1982) and 13272 (1982). This information is not intended for navigational purposes.

Projection and 3000-meter grid: Universal Transverse Mercator, zone 19.

10,000-foot grid ticks based on Massachusetts coordinate system, modified zone.

1987 North American Datum.

To place on the projected North American Datum 1983, move the projection lines 6 meters south and 42 meters west as shown by the dashed corner ticks. There may be private inholdings within the boundaries of the National or State reservations shown on this map.

CONTOUR INTERVAL: 3 METERS

NATIONAL GEODETIC VERTICAL DATUM OF 1929 CONTROL ELEVATIONS SHOWN TO THE NEAREST 0.1 METER OTHER ELEVATIONS SHOWN TO THE NEAREST 0.3 METER

DEPTH CURVES AND SOUNDINGS IN METERS

DATUM IS MEAN LOW WATER

THE RELATIONSHIP BETWEEN THE TWO DATUMS IS VARIABLE

BOUNDARY LINE SHOWN REPRESENTS THE APPROXIMATE LINE OF MEAN HIGH WATER

THE MEAN RANGE OF TIDE IS APPROXIMATELY 2.9 METERS

THIS MAP COMPLIES WITH NATIONAL MAP ACCURACY STANDARDS

Meters	Feet
1	3.281
2	6.562
3	9.843
4	13.124
5	16.405
6	19.686
7	22.967
8	26.248
9	29.529
10	32.810

To convert meters to feet multiply by 3.281
To convert feet to meters multiply by 0.3048

UTM grid convergence (1987) at 42° 15' N
Declination (MAG) Diagram is approximate

ADJOINING MAPS	1	2	3
1	1	2	3
2	4	5	6
3	7	8	9

1. Mansard
2. Boston North
3. Lynn
4. Framingham
5. Hull
6. Medford
7. Norwood
8. Weymouth



Topographic Map Symbols

- Primary highway, hard surface
- Secondary highway, hard surface
- Light-duty road, hard or improved surface
- Unimproved road, trail
- Route marker: Interstate, U.S. State
- Railroad: standard gage, narrow gage
- Bridge: drawbridge
- Footbridge; overpass; underpass
- Bathup area: only national landmark buildings shown
- House; barn; church; school; large structure
- Boundary:
 - National, with monument
 - State
 - County, parish
 - Civil township, precinct, district
 - Incorporated city, village, town
 - National or State reservation; small park
 - Land grant with monument; land section center
 - U.S. public lands survey; range, township, section
 - Range, township; section line; location approximate
- Fence or field line
- Power transmission line, isolated tower
- Dam; dam with lock
- Cemetery; grave
- Campground; picnic area; U.S. location monument
- Wellhead; water well; spring; hand section center
- Mine shaft; prospect; adit or cave
- Control: horizontal station; vertical station; spot elevation
- Contours: index; intermediate; supplementary; depression
- Distorted surface: strip mine, lava, sand
- Soundings; depth curve
- Perennial lake and stream; intermittent lake and stream
- Rapids; large and small; falls; large and small
- Submerged marsh; marsh, swamp
- Land subject to controlled inundation; woodland
- Scrub; mangrove
- Orchard; vineyard

A pamphlet describing topographic maps is available on request



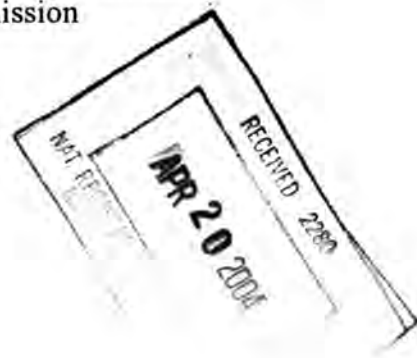
1. 4680100 329360 2. 330460 4681200 3. 330380 4680760 4. 329660 4680500



The Commonwealth of Massachusetts
William Francis Galvin, Secretary of the Commonwealth
Massachusetts Historical Commission

April 14, 2004

Ms. Carol Shull
National Register of Historic Places
Department of the Interior
National Park Service
1201 Eye Street, NW, 8th floor
Washington, DC 20005



Dear Ms. Shull:

Enclosed please find the following nomination form:

Milton Cemetery, 211 Centre Street, Milton (Norfolk), MA

The nomination has been voted eligible by the State Review Board and has been signed by the State Historic Preservation Officer. The owners of the property were notified of pending State Review Board consideration 30 to 45 days before the meeting and were afforded the opportunity to comment.

Sincerely,

A handwritten signature in cursive script that reads "Betsy Friedberg".

Betsy Friedberg
National Register Director
Massachusetts Historical Commission

enclosure

cc: Edith Clifford, consultant
Therese Desmond-Sills, Milton Cemetery
Nicholas Carter, Milton Historical Commission
James G. Mullen, Jr., Milton Board of Selectmen
Paul D. Kanter, Planning Director