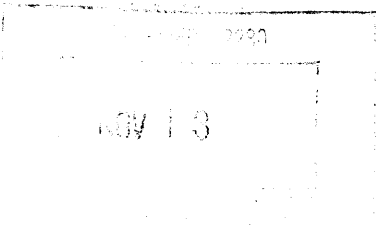


United States Department of the Interior
National Park Service

National Register of Historic Places
Registration Form



1600

This form is for use in nominating or requesting determinations for individual properties and districts. See instructions in *How to Complete the National Register of Historic Places Registration Form* (National Register Bulletin 16A). Complete each item by marking "x" in the appropriate box or by entering the information requested. If any item does not apply to the property being documented, enter "N/A" for "not applicable." For functions, architectural classification, materials, and areas of significance, enter only categories and subcategories from the instructions. Place additional entries and narrative items on continuation sheets (NPS Form 10-900a). Use a typewriter, word processor, or computer, to complete all items.

1. Name of Property

historic name North Central Historic District

other names B-1341

2. Location

street & number Roughly bounded by North Ave., Greenmount Ave., Falls Road, and I-83 not for publication

city or town Baltimore vicinity

state Maryland code MD county Independent City code 510 zip code 21202

3. State/Federal Agency Certification

As the designated authority under the National Historic Preservation Act of 1966, as amended, I hereby certify that this nomination request for determination of eligibility meets the documentation standards for registering properties in the National Register of Historic Places and meets the procedural and professional requirements set forth in 36 CFR Part 60. In my opinion, the property meets does not meet the National Register criteria. I recommend that this property be considered significant nationally statewide locally. (See continuation sheet for additional comments).

Signature of certifying official/Title

11-12-02

Date

State or Federal agency and bureau

In my opinion, the property meets does not meet the National Register criteria. (See continuation sheet for additional comments).

Signature of certifying official/Title

Date

State or Federal agency and bureau

4. National Park Service Certification

I hereby certify that this property is:

- entered in the National Register.
 - See continuation sheet.
- determined eligible for the National Register.
 - See continuation sheet.
- Determined not eligible for the National Register.
- removed from the National Register.
- other (explain): _____

Signature of the Keeper

Date of Action

12/27/02

Name of Property:

County and State

5. Classification**Ownership of Property**

(Check as many boxes as apply)

- private
 public-local
 public-State
 public-Federal

Category of Property

(Check only one box)

- building(s)
 district
 site
 structure
 object

Number of Resources within Property

(Do not include previously listed resources in the count)

Contributing	Noncontributing	
616	14	buildings
		sites
		structures
		objects
616	14	Total

Name of related multiple property listing

(Enter "N/A" if property is not part of a multiple property listing)

N/A

number of contributing resources previously listed in the National Register

76

6. Function or Use**Historic Functions**

(Enter categories from instructions)

DOMESTIC single dwelling

DOMESTIC multiple dwelling

COMMERCE/TRADE specialty store

COMMERCE/TRADE business

COMMERCE/TRADE warehouse

EDUCATION school

RELIGION religious facility

RECREATION AND CULTURE theatre

Current Functions

(Enter categories from instructions)

DOMESTIC single dwelling

DOMESTIC multiple dwelling

COMMERCE/TRADE specialty store

COMMERCE/TRADE business

COMMERCE/TRADE warehouse

EDUCATION school

RELIGION religious facility

RECREATION AND CULTURE theatre

7. Description**Architectural Classification**

(Enter categories from instructions)

LATE VICTORIAN Queen Anne Revival

LATE VICTORIAN Romanesque

LATE 19TH & 20TH CENTURY REVIVALS Classical

Revival Mission Spanish Colonial

LATE 19TH & 20TH CENTURY MOVEMENTS

Commercial Style

Materials

(Enter categories from instructions)

foundation BRICK, STONE

walls BRICK, STONE, TERRA COTTA

roof ASPHALT, SLATE

other

Narrative Description

(Describe the historic and current condition of the property on one or more continuation sheets)

United States Department of the Interior
National Park Service

National Register of Historic Places Continuation Sheet

North Central Historic District B-1341

Name of Property

Baltimore (Independent City), Maryland

County and State

Section 7 Page 1

Description Summary:

The North Central Historic District is an area of approximately twenty-five city blocks directly north of downtown Baltimore. The roughly triangular-shaped, mixed-use district comprises late nineteenth century row housing, commercial storefronts from the turn of the 20th century through the 1950s, large industrial buildings, several older theatres, a church, and two school buildings. The district includes 630 buildings. Most are 2-4 story high row houses, yet the area features an eight story former apartment house, several multi-story industrial/warehouse structures and even a few one-story, late-twentieth century automobile oriented commercial buildings. Stylistically housing ranges from traditional Baltimore row houses with flat brick facades and restrained decorative treatments to more highly embellished eclectic designs built with a variety of materials. Commercial and industrial structures run the gamut of Queen Anne, Romanesque, Neo-Classical, Spanish Revival, Commercial Style and Modern designs. Residential buildings define the western portion of the area, while industrial buildings are located along the southern and western edges. Commercial structures predominate along Charles Street and North Avenue, two major business streets that intersect in the district. The area is urban in character. Some streets are tree-lined, but landscaped parks are rare. Parking lots and vacant land where housing has been demolished create gaps within the district. Although vacant lots and deteriorated houses (especially in the eastern half of the district) and some non-historic intrusions (along the more commercial portions of the area) detract from the historic character of the neighborhood, the majority of streetscapes are intact retaining a high degree of integrity.

General Description:

The North Central area stands at the crossroads of major north-south streets leading from downtown (Charles Street, St. Paul Street, Calvert Street, Maryland Avenue and Guilford Avenue) and a major east-west thoroughfare, North Avenue. On the south and west, the Jones Falls valley containing railroad tracks and an expressway borders the district. Bridges connect the area to city neighborhoods on the other side of the valley. Green Mount Cemetery borders the area on the east and the neighborhood abuts the Old Goucher historic district to the north. From the highest elevation in the vicinity of Guilford Avenue and Lafayette Avenue, the land gently slopes to the southwest and southeast.

United States Department of the Interior
National Park Service

National Register of Historic Places Continuation Sheet

North Central Historic District B-1341

Name of Property

Baltimore (Independent City), Maryland

County and State

Section 7 Page 2

The built environment consists of a variety of building types, but the majority are row houses. Traditional Baltimore row houses are characterized by flat brick facades and restrained decorative treatments. The west side of the 1700 block of Maryland Avenue is typical of this building type [photo 1]. Although many of these buildings have been altered with storefronts, the houses are three stories high with fine detailing only to accentuate doors, windows and the roofline.

The 400 block of East North Avenue [photo 2] is a similar example of this housing type; however the houses are only two stories in height. These working class homes are three bays wide and are capped by a decorative wood cornice. Modest versions of these houses can be found along the smaller streets of the district. The 400 block of Pitman Place [photo 3] is lined with similar houses, although some facades are covered by formstone.

The traditional Baltimore row house, widespread throughout city, was the mainstay of residential architectural design for nearly a century. The earliest houses had gable roofs and dormers, but by the mid to late nineteenth century most had flat roofs and cornices. During the last two decades of the nineteenth century architectural journals began popularizing new housing styles. Influenced by national trends, architects and builders began embellishing the traditional Baltimore row house in a number of ways. The North Central district primarily dates from 1880 to 1900 when eclectic variations of row house architecture was popularized, therefore the area abounds with many examples of this style of housing.

One variation upon the traditional house is the use of materials other than brick. The 100 block of West North Avenue [photo 4] features a small row of elegant traditional row houses built of stone, rather than brick. The roofline of traditional row house designs was transformed by constructing mansard roofs. The 300 block of West North Avenue [photo 5] exemplifies this variety.

Brick band courses and decorative brick panels altered the traditional look of the row house. Asymmetrical building elements changed the rhythm of row house groupings. Houses in the 1800 block of St. Paul Street [photos 6-7] are representative of this stylistic variation. The window configuration on the east side of the street differed between the upper and ground floor levels. These variations can also be seen on more modest houses on the eastern half of the neighborhood. Changes to the roofline and projecting oriel windows are other non-traditional elements that were incorporated into many of the houses in the area. The houses at 1610-14

United States Department of the Interior
National Park Service

National Register of Historic Places Continuation Sheet

North Central Historic District B-1341

Name of Property

Baltimore (Independent City), Maryland

County and State

Section 7 Page 3

Barclay Street feature mansard roofs, grouped windows and decorative brickwork [photo 8]. At 326-348 Federal Street, the row has pedimented rooflines and projecting bay windows [photo 9].

In the 1700 block of Guilford Avenue, a row of tan brick bowed front houses with stone trim, completely departs from the traditional concept of a flat row house facade [photo 10]. Another example of this bowed fronts can be found along an alley is the 1500 block of Brentwood Avenue [photo 11]. These two-story, three bay wide houses are covered in stucco.

In the 1700 block of St. Paul Street is a row of stone houses featuring projecting bays on the first two levels surmounted by balconies with decorative iron railings [photo 12]. A row in the 200 block of West North Avenue is also constructed of stone with a rounded conical tower defining the corner [photo 13].

Among the most extreme examples of eclectic variations on the traditional row house is the six-house grouping in the unit block of East Lafayette Avenue [photo 14]. These stone houses feature unusual rooflines and projecting bays. The 1600 block of St. Paul Street also features a block of tan brick houses with a stone foundation and mansard roofs with dormers punctuated by chimneys [photo 15]. Two brick rows, one in the 300 block of East North Avenue [photo 16] and the other in the 1800 block of St. Paul Street [photo 17] are distinctive for their decorative brick panels, varied window design, and unusual roof line. The variations between the houses within the groups form distinct compositions distinguishing these rows from both the traditional as well as eclectic rows made up of virtually identical facades.

Although single builders often erected entire blocks of row houses, the variety in composition, materials and styles within the North Central area spans the spectrum from traditional to eclectic. The ever-changing appearance of these houses provides varied streetscapes, yet the basic size and shape of the buildings create walls along streets that provides continuity and defines the urban character of the district.

In addition to the row houses, a few apartment buildings and individual houses dot the streets of the neighborhood. The Walbert, an eight-story high tan brick building with projecting bays and stone trim stands at the northwest corner of Charles Street and Lafayette Avenue [photo 18]. Originally built as a mid-rise apartment building, it has been converted to offices. It is similar to other apartment buildings in the Mount Vernon – Belvedere area, just to the south. Other smaller apartment buildings include: the four story high Royalton at the northwest corner

United States Department of the Interior
National Park Service

National Register of Historic Places Continuation Sheet

North Central Historic District B-1341

Name of Property

Baltimore (Independent City), Maryland

County and State

Section 7 Page 4

of Maryland Avenue and North Avenue and the Guilford at North Avenue and Guilford Avenue. Both are narrow, four story high brick buildings with central entrances.

Among the most distinctive individual houses in the area is a tall three and one-half story individual house at the southeast corner of North Avenue and Calvert Street [photo 19]. Reminiscent of the architectural designs of Frank Furness, it features highly decorative stone window and door surrounds.

While row houses within the district can be characterized as variations on a theme, the commercial and industrial structures of North Central are more varied. Some of these buildings are adaptations of row housing. The old Chesapeake Restaurant at Charles Street and Lanvale Street combines five rough stone Romanesque houses with a later, somewhat inconsistent "Colonial" ground floor storefront [photo 20]. The three building group at 1816-1820 North Charles Street was built as a "business block" in 1889 combining store fronts with stylized stone upper floors compatible in scale to row housing [photo 21].

The Schuler Art School and Studio is another non-residential structure that is compatible to its surrounding in scale and materials [photo 22]. The bas-relief panels and sculpted details of the building are distinctive, yet in keeping with terra cotta decorative features seen on the Charles Theatre and old Crown Cork and Seal Buildings.

The Hotel Waldorf at the southeast corner of Charles Street and North Avenue is a tall Queen Anne design with a corner tower, terra cotta decorations and asymmetrical arrangement [photo 23]. The tall, narrow appearance is compatible to row house architecture in the district, yet its size and exuberant detailing stands out among its surroundings.

The Charles Theatre is the 1700 block of North Charles Street was originally built as a Street Car barn and power plant [photo 24]. Two stories in height, it features large arched windows and terra cotta details. It stands next to another two story commercial building, originally a bowling alley, but now housing Everyman's Theatre. This entirely commercial block is compatible to nearby row housing in materials and rhythm of building elements.

Several buildings along North Avenue near Charles Street were used as theatres and feature architectural designs to distinguish the buildings from their surroundings. The Parkway Theatre in the unit block of West North Avenue features three central arched windows and large

United States Department of the Interior
National Park Service

National Register of Historic Places Continuation Sheet

North Central Historic District B-1341

Name of Property

Baltimore (Independent City), Maryland

County and State

Section 7 Page 5

entablature [photo 25]. Without its signature marquee it is not as distinctive among its surroundings as originally designed. The Tudor style Heritage Theatre building, once a restaurant, calls attention to itself among its surrounding commercial buildings [photo 26]. Nearby, the former Aurora Theatre, now occupied by a church features upper floor projecting bays [photo 27]. The former Centre Theatre, an Art Deco design, [photo 28] has been stripped of some of its original detailing, yet remains distinctive from its surroundings.

Two early twentieth century bank buildings in the North Avenue commercial corridor feature Neo-Classical design. The tiny Provident Bank branch at the northwest corner of Maryland Avenue and North Avenue is a small stone temple attached to the Royalton Apartments [photo 4]. The former bank at northeast corner of North Avenue and Charles Street, a Renaissance Revival design, features a rusticated ground floor with arched windows [photo 29].

The North Avenue Market [photo 30] once took up nearly the entire block between North Avenue, Charles Street, 20th Street and Maryland Avenue, but the back portion along 20th Street was demolished for an elderly high rise. Only one story high with distinctive cupolas and tile roof, this Spanish Revival design is unique in the area. The building originally housed over two hundred market stalls similar to Lexington Market, but today is subdivided into several large commercial spaces featuring a pharmacy, supermarket and former McCrory's department store.

Among the largest commercial buildings are late nineteenth century and early twentieth century industrial/warehouse designs. The three story high, four bay wide brick building at the northeast corner of Howard Street and North Avenue originally housed Denny and Mitchell, undertakers and stables, and later the Oriole Pontiac automobile dealership. Although altered by a storefront, newer rear addition and truncated corner tower, this large Queen Anne design features corbelled brickwork and decorative terra cotta panels [photo 31].

The former Crown Cork and Seal factory in the vicinity of Guilford Avenue and Federal Street is a collection of massive multistory brick buildings built at the turn of the century. The oldest buildings along Guilford Avenue rival the vertical manufactories of downtown Baltimore's loft district in size and distinctive architecture. The Richardsonian Romanesque buildings feature arched windows, elaborate terra cotta decorations and carved panels [photo 32, 33 and 34]. Later early twentieth century additions are examples of the Commercial Style featuring bands of windows [photo 35].

United States Department of the Interior
National Park Service

National Register of Historic Places Continuation Sheet

North Central Historic District B-1341

Name of Property

Baltimore (Independent City), Maryland

County and State

Section 7 Page 6

The Morgan Millwork building at 119 West North Avenue is another large warehouse/factory type structure [photo 36]. Built c. 1915, it is five stories high and seven bays wide with tri-partite segmental arched windows, stone bands and roof top stone name plate displaying "MORGAN."

A few smaller commercial/factory type buildings can be found along the narrow alleys of the district and side streets. The two-story high Chaudron Glass building is located in the 1800 block of Lovegrove Street [photo 37]. Unseen along the main streets, it features old wooden garage door, painted signs and a second story loading bay. Several similar structures within alleyways have been converted into auto repair facilities in the neighborhood. The two story building at Lanvale Street is a similar, albeit, more stylistic example of this type of commercial structure in the area [photo 38].

Only one church building is extant within the boundaries of the district. The former Universalist church at Guilford Avenue and Federal Street is a stone Victorian design with corner steeple and arched windows [photo 39]. Two other churches were demolished and replaced by commercial/industrial uses. Many of the residents of this area probably attended the fine grouping of churches located in the old Goucher historic district just to the north.

Two school buildings, no longer used, are also located in the southeastern portion of the neighborhood. The former Mildred Monroe School in the 1600 block of Guilford Avenue includes the original 1890 Romanesque two-story building with central tower [photo 40] and a 1965 two-story building to the south. The older building is virtually identical to former School #33 in South Baltimore that now houses art studios an exhibition space. A second school in the 400 block of Federal Street was originally built in 1914 and enlarged in 1931. The original 1914 building was demolished in 1999, but the two-story addition has been renovated and converted into a community center [photo 41].

Although the district is primarily made up of late nineteenth and early twentieth century buildings, some non-contributing buildings date from after World War II. These include later commercial structures often oriented to customers traveling by automobile. A three story brick and concrete parking garage takes up a large portion of the streetscape in the 1700 block of North Charles Street opposite the Charles Theatre [42]. A 1960s former Maryland National Bank branch at North Avenue and Maryland Avenue is a brick, concrete and glass modern design with

United States Department of the Interior
National Park Service

National Register of Historic Places Continuation Sheet

North Central Historic District B-1341

Name of Property

Baltimore (Independent City), Maryland

County and State

Section 7 Page 7

drive in banking facilities across the street [43]. One story high Kentucky Fried Chicken and McDonald fast food restaurants built in the late twentieth century stand along North Avenue. A one story high Rite Aide pharmacy was built at the intersection of North Avenue and Greenmount Avenue in the late 1990s. A four story high Department of Social Services Building is located at the southwest corner of Guilford Avenue and Federal Street. Large billboards located on vacant lots and atop a few buildings are another intrusive element within the district.

Besides these newer intrusions, several vacant lots exist in the eastern portion of the community. Most are unpaved, but a few have been converted into garden plots or small parks. These lots present a "gap toothed" appearance along some row house streetscapes [photo 44-45]. Despite the earlier described built intrusions and the gaps created by demolition, the North Central district maintains its historic integrity. With the rehabilitation of vacant structures and compatible new infill, the originally built-up character of the district can be revitalized, returning the appearance of the district closer to its late nineteenth and early twentieth century origins.

The North Central district encompasses some buildings previously listed in the National Register of Historic Places: 1601-1830 St. Paul Street and 12-20 E. Lafayette Street [B-4096]; Hans Schuler Studio and Residence, 5 East Lafayette Avenue [B-4110]; houses at 303-327 East North Avenue [B-3681]. They are designated as NR on the following list of properties. The C indicates properties contributing to the historic character of the district, while the NC indicates non-contributing properties.

United States Department of the Interior
National Park Service

National Register of Historic Places Continuation Sheet

North Central Historic District B-1341

Name of Property

Baltimore (Independent City), Maryland

Section 7 Page 8

County and State

ADDRESS LIST OF PROPERTIES IN THE NORTH CENTRAL HISTORIC DISTRICT					
Street Number and Name	Style/Materials/Type	Date	C/NC		
1513	Barclay Street	2 Story 3 Bay Brick Bowed Front Row House	c. 1900	C	
1515	Barclay Street	2 Story 3 Bay Brick Bowed Front Row House	c. 1900	C	
1519	Barclay Street	2 Story 3 Bay Brick Bowed Front Row House	c. 1900	C	
1521	Barclay Street	2 Story 3 Bay Brick Bowed Front Row House	c. 1900	C	
1523	Barclay Street	2 Story 3 Bay Brick Bowed Front Row House	c. 1900	C	
1525	Barclay Street	2 Story 3 Bay Brick Bowed Front Row House	c. 1900	C	
1527	Barclay Street	2 Story 3 Bay Brick Bowed Front Row House	c. 1900	C	
1529	Barclay Street	2 Story 3 Bay Brick Bowed Front Row House	c. 1900	C	
1531	Barclay Street	2 Story 3 Bay Brick Bowed Front Row House	c. 1900	C	
1533	Barclay Street	2 Story 3 Bay Brick Bowed Front Row House	c. 1900	C	
1535	Barclay Street	2 Story 3 Bay Brick Bowed Front Row House	c. 1900	C	
1537	Barclay Street	2 Story 3 Bay Brick Bowed Front Row House	c. 1900	C	
1500	Barclay Street	3 Story Large Commercial Style Industrial Building	1914	C	
1610	Barclay Street	3 Story 2 Bay Brick Eclectic Row House w/Mansard	c. 1885	C	
1612	Barclay Street	3 Story 2 Bay Brick Eclectic Row House w/Mansard	c. 1885	C	
1614	Barclay Street	3 Story 2 Bay Brick Eclectic Row House w/Mansard	c. 1885	C	
1616	Barclay Street	2 Story 2 Bay Eclectic Row House	c. 1885	C	
1618	Barclay Street	2 Story 2 Bay Eclectic Row House	c. 1885	C	
1620	Barclay Street	2 Story 2 Bay Eclectic Row House	c. 1885	C	
1701	Barclay Street	3 Story 3 Bay Brick Eclectic Row House	c. 1885	C	
1703	Barclay Street	3 Story 3 Bay Brick Eclectic Row House	c. 1885	C	
1705	Barclay Street	3 Story 3 Bay Brick Eclectic Row House	c. 1885	C	
1707	Barclay Street	3 Story 3 Bay Brick Eclectic Row House	c. 1885	C	
1709-19	Barclay Street	Vacant Lot			
1721	Barclay Street	3 Story 3 Bay Brick Traditional Row House	c. 1885	C	
1723	Barclay Street	3 Story 3 Bay Brick Traditional Row House	c. 1885	C	
1725-27	Barclay Street	Vacant Lot			
1704-6	Barclay Street	Vacant Lot			
1708	Barclay Street	3 Story 3 Bay Brick Traditional Row House	c. 1885	C	
1710	Barclay Street	3 Story 3 Bay Brick Traditional Row - rebuilt front	c. 1885	C	
1712	Barclay Street	3 Story 3 Bay Brick Traditional Row House	c. 1885	C	
1714	Barclay Street	3 Story 3 Bay Brick Traditional Row - rebuilt front	c. 1885	C	
1716	Barclay Street	3 Story 3 Bay Brick Traditional Row - rebuilt front	c. 1885	C	

United States Department of the Interior
National Park Service

National Register of Historic Places Continuation Sheet

North Central Historic District B-1341

Name of Property

Baltimore (Independent City), Maryland

Section 7 Page 9

County and State

1805	Barclay Street	3 Story 3 Bay Brick Traditional Row House	c. 1885	C
1807	Barclay Street	3 Story 3 Bay Brick Traditional Row House	c. 1885	C
1809	Barclay Street	3 Story 3 Bay Brick Traditional Row House	c. 1885	C
1811	Barclay Street	3 Story 3 Bay Brick Traditional Row House	c. 1885	C
1813	Barclay Street	3 Story 3 Bay Brick Traditional Row House	c. 1885	C
1815	Barclay Street	3 Story 3 Bay Brick Traditional Row House	c. 1885	C
1817	Barclay Street	2 Story 3 Bay Brick Traditional Row House	c. 1890	C
1819	Barclay Street	2 Story 3 Bay Brick Traditional Row House	c. 1890	C
1821	Barclay Street	2 Story 3 Bay Brick Traditional Row House	c. 1890	C
1800	Barclay Street	3 Story 3 Bay Brick Traditional Row House	c. 1885	C
1802	Barclay Street	3 Story 3 Bay Brick Traditional Row House	c. 1885	C
1804	Barclay Street	3 Story 3 Bay Brick Traditional Row House	c. 1885	C
1806	Barclay Street	3 Story 3 Bay Brick Traditional Row House	c. 1885	C
1808	Barclay Street	3 Story 3 Bay Brick Traditional Row House	c. 1885	C
1810	Barclay Street	3 Story 3 Bay Brick Traditional Row House	c. 1885	C
1812	Barclay Street	3 Story 3 Bay Brick Traditional Row House	c. 1885	C
1814	Barclay Street	3 Story 3 Bay Brick Traditional Row House	c. 1885	C
1816	Barclay Street	3 Story 3 Bay Brick Traditional Row House	c. 1885	C
1818	Barclay Street	2 Story 3 Bay Brick Traditional Row House	c. 1890	C
1820	Barclay Street	2 Story 3 Bay Brick Traditional Row House	c. 1890	C
1822	Barclay Street	2 Story 3 Bay Brick Traditional Row House	c. 1890	C
1418	Belvidere Street	Masonry Warehouse	c. 1970	NC

United States Department of the Interior
National Park Service

National Register of Historic Places Continuation Sheet

North Central Historic District B-1341

Name of Property

Baltimore (Independent City), Maryland

Section 7 Page 10

County and State

1504	Brentwood Avenue	2 Story 2 Bay Brick Bowed Front Row - stuccoed	c. 1900	C
1506	Brentwood Avenue	2 Story 2 Bay Brick Bowed Front Row - stuccoed	c. 1900	C
1508	Brentwood Avenue	2 Story 2 Bay Brick Bowed Front Row - stuccoed	c. 1900	C
1510	Brentwood Avenue	2 Story 2 Bay Brick Bowed Front Row - stuccoed	c. 1900	C
1512	Brentwood Avenue	2 Story 2 Bay Brick Bowed Front Row - stuccoed	c. 1900	C
1514	Brentwood Avenue	2 Story 2 Bay Brick Bowed Front Row - stuccoed	c. 1900	C
1516	Brentwood Avenue	2 Story 2 Bay Brick Bowed Front Row - stuccoed	c. 1900	C
1518	Brentwood Avenue	2 Story 2 Bay Brick Bowed Front Row - stuccoed	c. 1900	C
1520	Brentwood Avenue	2 Story 2 Bay Brick Bowed Front Row - stuccoed	c. 1900	C
1522	Brentwood Avenue	2 Story 2 Bay Brick Bowed Front Row - stuccoed	c. 1900	C
1524	Brentwood Avenue	2 Story 2 Bay Brick Bowed Front Row - stuccoed	c. 1900	C
1526	Brentwood Avenue	2 Story 2 Bay Brick Bowed Front Row - stuccoed	c. 1900	C
1528	Brentwood Avenue	2 Story 2 Bay Brick Bowed Front Row - stuccoed	c. 1900	C

United States Department of the Interior
National Park Service

National Register of Historic Places Continuation Sheet

North Central Historic District B-1341

Name of Property

Baltimore (Independent City), Maryland

Section 7 Page 11

County and State

1539	N.	Calvert Street	2 Story Brick Industrial Building	c. 1920	C
1617	N.	Calvert Street	3 Story 2 Bay Brick Row w/2nd Floor Oriel Window	c. 1890	C
1619	N.	Calvert Street	3 Story 2 Bay Brick Row w/2nd Floor Oriel Window	c. 1890	C
1621	N.	Calvert Street	3 Story 2 Bay Brick Row w/2nd Floor Oriel Window	c. 1890	C
1623	N.	Calvert Street	3 Story 2 Bay Brick Row w/2nd Floor Oriel Window	c. 1890	C
1625	N.	Calvert Street	3 Story 2 Bay Brick Row w/2nd Floor Oriel Window	c. 1890	C
1627	N.	Calvert Street	3 Story 2 Bay Brick Row w/2nd Floor Oriel Window	c. 1890	C
1629	N.	Calvert Street	3 Story 2 Bay Brick Row w/2nd Floor Oriel Window	c. 1890	C
1631	N.	Calvert Street	3 Story 2 Bay Brick Row w/2nd Floor Oriel Window	c. 1890	C
1633	N.	Calvert Street	3 Story 2 Bay Brick Row w/2nd Floor Oriel Window	c. 1890	C
1635	N.	Calvert Street	3 Story 2 Bay Brick Row w/2nd Floor Oriel Window	c. 1890	C
1637	N.	Calvert Street	3 Story 2 Bay Brick Row w/2nd Floor Oriel Window	c. 1890	C
1639	N.	Calvert Street	3 Story 2 Bay Brick Row w/2nd Floor Oriel Window	c. 1890	C
1641	N.	Calvert Street	3 Story 2 Bay Brick Row w/2nd Floor Oriel Window	c. 1890	C
1643	N.	Calvert Street	3 Story 2 Bay Brick Row w/2nd Floor Oriel Window	c. 1890	C
1600	N.	Calvert Street	3 Story Brick Office Conversion of Commercial Bldg.	c. 1920	C
1606	N.	Calvert Street	2 Story 2 Bay Tan Brick Row House	c. 1900	C
1608	N.	Calvert Street	2 Story 2 Bay Tan Brick Row House	c. 1900	C
1610	N.	Calvert Street	2 Story 2 Bay Tan Brick Row House	c. 1900	C
1612	N.	Calvert Street	3 Story 2 Bay Brick Eclectic Row House	c. 1890	C
1614	N.	Calvert Street	3 Story 2 Bay Brick Eclectic Row House	c. 1890	C
1616	N.	Calvert Street	3 Story 2 Bay Brick Eclectic Row House	c. 1890	C
1618	N.	Calvert Street	3 Story 2 Bay Brick Eclectic Row House	c. 1890	C
1620	N.	Calvert Street	3 Story 2 Bay Brick Eclectic Row House	c. 1890	C
1622	N.	Calvert Street	3 Story 2 Bay Brick Eclectic Row House	c. 1890	C
1624	N.	Calvert Street	3 Story 2 Bay Brick Eclectic Row House	c. 1890	C
1626	N.	Calvert Street	3 Story 2 Bay Brick Eclectic Row House	c. 1890	C
1628	N.	Calvert Street	3 Story 2 Bay Brick Eclectic Row House	c. 1890	C
1630	N.	Calvert Street	3 Story 2 Bay Brick Eclectic Row House	c. 1890	C
1632	N.	Calvert Street	3 Story 2 Bay Brick Eclectic Row House	c. 1890	C
1634	N.	Calvert Street	3 Story 2 Bay Brick Eclectic Row House	c. 1890	C
1636	N.	Calvert Street	3 Story 2 Bay Brick Eclectic Row House	c. 1890	C
1638	N.	Calvert Street	3 Story 2 Bay Brick Eclectic Row House	c. 1890	C

United States Department of the Interior
National Park Service

National Register of Historic Places Continuation Sheet

North Central Historic District B-1341

Name of Property

Baltimore (Independent City), Maryland

Section 7 Page 12

County and State

1701	N.	Calvert Street	3 Story 3 Bay Brick Eclectic Row House	c . 1890	C
1703	N.	Calvert Street	3 Story 3 Bay Brick Eclectic Row House	c . 1890	C
1705	N.	Calvert Street	3 Story 3 Bay Brick Eclectic Row House	c . 1890	C
1707	N.	Calvert Street	3 Story 3 Bay Brick Eclectic Row House	c . 1890	C
1709	N.	Calvert Street	3 Story 3 Bay Brick Eclectic Row House	c . 1890	C
1711	N.	Calvert Street	3 Story 3 Bay Brick Eclectic Row House	c . 1890	C
1713	N.	Calvert Street	3 Story 3 Bay Brick Eclectic Row House	c . 1890	C
1715	N.	Calvert Street	3 Story 3 Bay Brick Eclectic Row House	c . 1890	C
1719	N.	Calvert Street	3 Story 3 Bay Brick Eclectic Row House	c . 1890	C
1721	N.	Calvert Street	Vacant		
1803	N.	Calvert Street	3 Story 2 Bay Brick Traditional Row House	c . 1890	C
1805	N.	Calvert Street	3 Story 2 Bay Brick Traditional Row House	c . 1890	C
1809-25	N.	Calvert Street	Community Garden Plot		
1827	N.	Calvert Street	3 Story 2 Bay Brick Traditional Row House	c . 1890	C
1829	N.	Calvert Street	3 Story 2 Bay Brick Traditional Row House	c . 1890	C
1800	N.	Calvert Street	3 Story 3 Bay Brick Eclectic Row House	c . 1890	C
1802	N.	Calvert Street	3 Story 3 Bay Brick Eclectic Row House	c . 1890	C
1804	N.	Calvert Street	3 Story 3 Bay Brick Eclectic Row House	c . 1890	C
1806	N.	Calvert Street	3 Story 3 Bay Brick Eclectic Row House	c . 1890	C
1808	N.	Calvert Street	3 Story 3 Bay Brick Eclectic Row House	c . 1890	C
1810	N.	Calvert Street	3 Story 3 Bay Brick Eclectic Row House	c . 1890	C
1812	N.	Calvert Street	3 Story 3 Bay Brick Eclectic Row House	c . 1890	C
1814	N.	Calvert Street	3 Story 3 Bay Brick Eclectic Row House	c . 1890	C
1816	N.	Calvert Street	3 Story 3 Bay Brick Eclectic Row House	c . 1890	C
1818	N.	Calvert Street	3 Story 3 Bay Brick Eclectic Row House	c . 1890	C
1820	N.	Calvert Street	2 Story Tan Brick Commercial Building	c. 1940	C

United States Department of the Interior
National Park Service

National Register of Historic Places Continuation Sheet

North Central Historic District B-1341

Name of Property

Baltimore (Independent City), Maryland

Section 7 Page 13

County and State

1701-9	N. Charles Street	4 Story Stone Eclectic Row combined for Restaurant	c. 1890	C
1711-1717	N. Charles Street	2 Story Romanesque Car Barn converted to Theatre	c. 1885	C
1727	N. Charles Street	2 Story 5 Bay Commercial Style Building	1909	C
1731	N. Charles Street	Parking Lot		
1700	N. Charles Street	3 Story Brick Traditonal Row altered for com. use	c. 1890	C
1706	N. Charles Street	Parking Lot		
1714	N. Charles Street	Brick Parking Garage	c. 1955	C
1722	N. Charles Street	3 Story 3 Bay Brick Eclectic Row House	c. 1890	C
1724	N. Charles Street	3 Story 3 Bay Brick Eclectic Row House	c. 1890	C
1726	N. Charles Street	3 Story 3 Bay Brick Row - new facade	c. 1890	C
1728	N. Charles Street	3 Story 3 Bay Brick Row - new facade	c. 1890	C
1730	N. Charles Street	3 Story 3 Bay Brick Row - new facade	c. 1890	C
1801-11	N. Charles Street	Modern Gas Station	c.1990	C
1813	N. Charles Street	3 Story Stone Neo-Classical altered facade	c. 1930	C
1815-17	N. Charles Street	3 Story Brick Row facade altered for com. use	c. 1890	C
1819	N. Charles Street	3 Story Brick Eclectic Row with storefronts	c. 1890	C
1821	N. Charles Street	3 Story Brick Eclectic Row with storefronts	c. 1890	C
1823	N. Charles Street	3 Story Brick Eclectic Row with storefronts	c. 1890	C
1825	N. Charles Street	3 Story Brick Eclectic Row with storefronts	c. 1890	C
1827	N. Charles Street	4 Story Brick Traditional Row type com. building	c. 1910	C
1800-02	N. Charles Street	8 Story Neo-Classical Apartment House	c. 1905	C
1816	N. Charles Street	4 Story Stone Queen Anne w/storefronts	1889	C
1818	N. Charles Street	4 Story Stone Queen Anne w/storefronts	1889	C
1820	N. Charles Street	4 Story Stone Queen Anne w/storefronts	1889	C
1901	N. Charles Street	2 Story Stone Neo-Classic Bank	1928	C
1904-06	N. Charles Street	3 Story 3 Bay Brick Traditional Row House	c. 1890	C
1908	N. Charles Street	3 Story 3 Bay Brick Traditional Row House	c. 1890	C
1801-25	Falls Road	3 Story Brick Commercial Style Warehouse	c. 1930	C

United States Department of the Interior
National Park Service

National Register of Historic Places Continuation Sheet

North Central Historic District B-1341

Name of Property

Baltimore (Independent City), Maryland

Section 7 Page 14

County and State

326	Federal Street	2 Story 2 Bay Brick Eclectic Row House	c. 1885	C
328	Federal Street	2 Story 2 Bay Brick Eclectic Row House	c. 1885	C
330	Federal Street	2 Story 2 Bay Brick Eclectic Row House	c. 1885	C
332	Federal Street	2 Story 2 Bay Brick Eclectic Row House	c. 1885	C
334	Federal Street	2 Story 2 Bay Brick Eclectic Row House	c. 1885	C
336	Federal Street	2 Story 2 Bay Brick Eclectic Row House	c. 1885	C
338	Federal Street	2 Story 2 Bay Brick Eclectic Row House	c. 1885	C
340	Federal Street	2 Story 2 Bay Brick Eclectic Row House	c. 1885	C
342	Federal Street	2 Story 2 Bay Brick Eclectic Row House	c. 1885	C
344	Federal Street	2 Story 2 Bay Brick Eclectic Row House	c. 1885	C
346	Federal Street	2 Story 2 Bay Brick Eclectic Row House	c. 1885	C
348	Federal Street	2 Story 2 Bay Brick Eclectic Row House	c. 1885	C

United States Department of the Interior
National Park Service

National Register of Historic Places Continuation Sheet

North Central Historic District B-1341

Name of Property

Baltimore (Independent City), Maryland

Section 7 Page 15

County and State

401-3	Federal Street	2 Story 3 Bay Brick Bowed Front Row House	c. 1900	C
405	Federal Street	2 Story 3 Bay Brick Bowed Front Row House	c. 1900	C
407	Federal Street	2 Story 3 Bay Brick Bowed Front Row House	c. 1900	C
409	Federal Street	2 Story 3 Bay Brick Bowed Front Row House	c. 1900	C
411	Federal Street	2 Story 3 Bay Brick Bowed Front Row House	c. 1900	C
413	Federal Street	2 Story 3 Bay Brick Bowed Front Row House	c. 1900	C
415	Federal Street	2 Story 3 Bay Brick Bowed Front Row House	c. 1900	C
417	Federal Street	2 Story 3 Bay Brick Bowed Front Row House	c. 1900	C
419	Federal Street	2 Story 3 Bay Brick Bowed Front Row House	c. 1900	C
421	Federal Street	2 Story 3 Bay Brick Bowed Front Row House	c. 1900	C
425	Federal Street	School Addition converted into Community Center	1931	C
400	Federal Street	2 Story 2 Bay Brick Traditional Row House	c. 1885	C
402	Federal Street	2 Story 2 Bay Brick Traditional Row House	c. 1885	C
404	Federal Street	2 Story 2 Bay Brick Traditional Row House	c. 1885	C
406	Federal Street	2 Story 2 Bay Brick Traditional Row House	c. 1885	C
408	Federal Street	2 Story 2 Bay Brick Traditional Row House	c. 1885	C
410	Federal Street	2 Story 2 Bay Brick Traditional Row House	c. 1885	C
412	Federal Street	2 Story 2 Bay Brick Traditional Row House	c. 1885	C
411	Federal Street	2 Story 2 Bay Brick Traditional Row House	c. 1885	C
416	Federal Street	2 Story 2 Bay Brick Traditional Row House	c. 1885	C
418	Federal Street	2 Story 2 Bay Brick Traditional Row House	c. 1885	C
420	Federal Street	2 Story 2 Bay Brick Traditional Row House	c. 1885	C
422	Federal Street	2 Story 2 Bay Brick Traditional Row House	c. 1885	C
424	Federal Street	2 Story 2 Bay Brick Traditional Row House	c. 1885	C
426	Federal Street	2 Story 2 Bay Brick Traditional Row House	c. 1885	C
428	Federal Street	2 Story 2 Bay Brick Traditional Row House	c. 1885	C
430	Federal Street	2 Story 2 Bay Brick Traditional Row House	c. 1885	C
432	Federal Street	2 Story 2 Bay Brick Traditional Row House	c. 1885	C
434	Federal Street	2 Story 2 Bay Brick Traditional Row House	c. 1885	C
436	Federal Street	2 Story 2 Bay Brick Traditional Row House	c. 1885	C
438	Federal Street	2 Story 2 Bay Brick Traditional Row House	c. 1885	C
440	Federal Street	2 Story 2 Bay Brick Traditional Row House	c. 1885	C
442	Federal Street	2 Story 2 Bay Brick Traditional Row House	c. 1885	C
444	Federal Street	2 Story 2 Bay Brick Traditional Row House	c. 1885	C
446	Federal Street	2 Story 2 Bay Brick Traditional Row House	c. 1885	C
448	Federal Street	2 Story 2 Bay Brick Traditional Row House	c. 1885	C
450	Federal Street	2 Story 2 Bay Brick Traditional Row House	c. 1885	C

United States Department of the Interior
National Park Service

National Register of Historic Places Continuation Sheet

North Central Historic District B-1341

Name of Property

Baltimore (Independent City), Maryland

Section 7 Page 16

County and State

452	Federal Street	2 Story 2 Bay Brick Traditional Row House	c. 1885	C
454	Federal Street	2 Story 2 Bay Brick Traditional Row House	c. 1885	C
456	Federal Street	2 Story 2 Bay Brick Traditional Row House	c. 1885	C
458	Federal Street	2 Story 2 Bay Brick Traditional Row House	c. 1885	C
460	Federal Street	2 Story 2 Bay Brick Traditional Row House	c. 1885	C
462	Federal Street	2 Story 2 Bay Brick Traditional Row House	c. 1885	C

1400-10	Greenmount Avenue	1 Story Brick Warehouse	c. 1940	C
1412-1428	Greenmount Avenue	Vacant		
1520	Greenmount Avenue	Vacant		
1700-14	Greenmount Avenue	Vacant		
1804	Greenmount Avenue	3 Story 2 Bay Brick Traditional Row - formstone	c. 1885	C
1806	Greenmount Avenue	3 Story 2 Bay Brick Traditional Row - formstone	c. 1885	C
1808	Greenmount Avenue	3 Story 2 Bay Brick Traditional Row - formstone	c. 1885	C
1810	Greenmount Avenue	3 Story 2 Bay Brick Traditional Row - formstone	c. 1885	C
1812-22	Greenmount Avenue	2 Story Brick Warehouse	c. 1925	C

United States Department of the Interior
National Park Service

National Register of Historic Places Continuation Sheet

North Central Historic District B-1341

Name of Property

Baltimore (Independent City), Maryland

Section 7 Page 17

County and State

1501-1517	Guilford Avenue	5 Story Brick Romanesque Loft Industrial Building	1896	C
1510	Guilford Avenue	4 Story Tan Brick Modern Office Building	c. 1970	NC
1601	Guilford Avenue	6 Story Brick Romanesque Loft Industrial Building	1898	C
1611	Guilford Avenue	2 Story Brick Additon Loft Industrial Building	1898	C
1639	Guilford Avenue	Parking Lot		
1600	Guilford Avenue	Romanesque School Building w/Modern Addition	1890/1965	C
1701	Guilford Avenue	Vacant Lot		
1703	Guilford Avenue	3 Story 2 Bay Brick Eclectic Row House	1883	C
1705	Guilford Avenue	3 Story 2 Bay Brick Eclectic Row House	1883	C
1707	Guilford Avenue	3 Story 2 Bay Brick Eclectic Row House	1883	C
1709	Guilford Avenue	3 Story 2 Bay Brick Eclectic Row House	1883	C
1711	Guilford Avenue	3 Story 2 Bay Brick Eclectic Row House	1883	C
1713	Guilford Avenue	3 Story 2 Bay Brick Eclectic Row House	1883	C
1715	Guilford Avenue	3 Story 2 Bay Brick Eclectic Row House	1883	C
1717	Guilford Avenue	3 Story 2 Bay Brick Eclectic Row House	1883	C
1719	Guilford Avenue	3 Story 2 Bay Brick Eclectic Row House	1883	C
1721	Guilford Avenue	3 Story 2 Bay Brick Eclectic Row House	1883	C
1723	Guilford Avenue	3 Story 2 Bay Brick Eclectic Row House	1883	C
1725	Guilford Avenue	3 Story 2 Bay Brick Eclectic Row House	1883	C

United States Department of the Interior
National Park Service

North Central Historic District B-1341

National Register of Historic Places Continuation Sheet

Name of Property

Baltimore (Independent City), Maryland

Section 7 Page 18

County and State

1727	Guilford Avenue	3 Story 2 Bay Brick Eclectic Row House	1883	C
1729	Guilford Avenue	3 Story 2 Bay Brick Eclectic Row House	1883	C
1731	Guilford Avenue	3 Story 2 Bay Brick Eclectic Row House	1883	C
1733	Guilford Avenue	3 Story 2 Bay Brick Eclectic Row House	1883	C
1735	Guilford Avenue	3 Story 2 Bay Brick Eclectic Row House	1883	C
1700	Guilford Avenue	Stone Victorian Gothic Church	1887	C
1702	Guilford Avenue	3 Story 3 Bay Yellow Brick Bowed Front Row House	c. 1890	C
1704	Guilford Avenue	3 Story 3 Bay Yellow Brick Bowed Front Row House	c. 1890	C
1706	Guilford Avenue	3 Story 3 Bay Yellow Brick Bowed Front Row House	c. 1890	C
1708	Guilford Avenue	3 Story 3 Bay Yellow Brick Bowed Front Row House	c. 1890	C
1710	Guilford Avenue	3 Story 3 Bay Yellow Brick Bowed Front Row House	c. 1890	C
1712	Guilford Avenue	3 Story 3 Bay Yellow Brick Bowed Front Row House	c. 1890	C
1714	Guilford Avenue	3 Story 3 Bay Yellow Brick Bowed Front Row House	c. 1890	C
1716	Guilford Avenue	3 Story 3 Bay Yellow Brick Bowed Front Row House	c. 1890	C
1718-20	Guilford Avenue	Vacant Lot		
1734	Guilford Avenue	3 Story 3 Bay Stone Row House (fronts of Lafayette)	c.1890	C
1801	Guilford Avenue	Vacant Lot		
1803-17	Guilford Avenue	1 Story Brick Commercial Building	c. 1960	C
1800	Guilford Avenue	3 Story Tan Brick Bowed Front Row House	c. 1900	C
1802	Guilford Avenue	3 Story Tan Brick Bowed Front Row House	c. 1900	C
1804	Guilford Avenue	3 Story Tan Brick Bowed Front Row House	c. 1900	C
1806	Guilford Avenue	3 Story Tan Brick Bowed Front Row House	c. 1900	C
1808	Guilford Avenue	3 Story Tan Brick Bowed Front Row House	c. 1900	C
1810	Guilford Avenue	3 Story Tan Brick Bowed Front Row House	c. 1900	C
1812	Guilford Avenue	3 Story Tan Brick Bowed Front Row House	c. 1900	C
1820	Guilford Avenue	4 Story Brick Apartment House	c. 1900	C
1901-05	Howard Street	3 Story High Brick Commercial Style Building	c. 1930	C

United States Department of the Interior
National Park Service

National Register of Historic Places Continuation Sheet

North Central Historic District B-1341

Name of Property

Baltimore (Independent City), Maryland

Section 7 Page 19

County and State

3	W.	Lafayette Avenue	Parking Lot		
9-13	W.	Lafayette Avenue	1 Story Brick Auto Repair Shop	c. 1960	NC
20-26	W.	Lafayette Avenue	Parking Lot		
5	E.	Lafayette Avenue	3 Story Brick Artist Studio and School	c. 1910	NR
9	E.	Lafayette Avenue	3 Story 2 Bay Brick Traditional Row House	c. 1890	C
11-17	E.	Lafayette Avenue	Parking Lot		

6	E.	Lafayette Avenue	2 Story Brick Commercial Building	c. 1920	C
10	E.	Lafayette Avenue	1 Story Cinder Block Warehouse	c. 1960	C
12	E.	Lafayette Avenue	3 Story Stone Eclectic Row House	c. 1890	NR
14	E.	Lafayette Avenue	3 Story Stone Eclectic Row House	c. 1890	NR
16	E.	Lafayette Avenue	3 Story Stone Eclectic Row House	c. 1890	NR
18	E.	Lafayette Avenue	3 Story Stone Eclectic Row House	c. 1890	NR
20	E.	Lafayette Avenue	3 Story Stone Eclectic Row House	c. 1890	NR
103-109	E.	Lafayette Avenue	Park		
111	E.	Lafayette Avenue	3 Story 3 Bay Brick Traditional Row House	c. 1890	C
113	E.	Lafayette Avenue	3 Story 3 Bay Brick Traditional Row House	c. 1890	C
115	E.	Lafayette Avenue	3 Story 3 Bay Brick Traditional Row House	c. 1890	C
117	E.	Lafayette Avenue	Parking and Storage Lot for Housing Authority		
100	E.	Lafayette Avenue	3 Story 2 Bay Brick Traditional Row House	c. 1890	C
102	E.	Lafayette Avenue	3 Story 2 Bay Brick Traditional Row House	c. 1890	C

United States Department of the Interior
National Park Service

National Register of Historic Places Continuation Sheet

North Central Historic District B-1341

Name of Property

Baltimore (Independent City), Maryland

Section 7 Page 20

County and State

201	E.	Lafayette Avenue	3 Story 3 Bay Brick Traditional Row	c. 1885	C
203	E.	Lafayette Avenue	3 Story 3 Bay Brick Traditional Row	c. 1885	C
205	E.	Lafayette Avenue	3 Story 3 Bay Brick Traditional Row	c. 1885	C
207	E.	Lafayette Avenue	3 Story 3 Bay Brick Traditional Row	c. 1885	C
209	E.	Lafayette Avenue	3 Story 3 Bay Brick Traditional Row	c. 1885	C
211	E.	Lafayette Avenue	3 Story 3 Bay Brick Traditional Row	c. 1885	C
213	E.	Lafayette Avenue	3 Story 3 Bay Brick Traditional Row	c. 1885	C
215	E.	Lafayette Avenue	3 Story 3 Bay Brick Traditional Row	c. 1885	C
217	E.	Lafayette Avenue	3 Story 3 Bay Brick Traditional Row	c. 1885	C
219	E.	Lafayette Avenue	3 Story 3 Bay Brick Traditional Row	c. 1885	C
221	E.	Lafayette Avenue	3 Story 3 Bay Stone Projecting Fronts	c. 1890	C
223	E.	Lafayette Avenue	3 Story 3 Bay Stone Projecting Fronts	c. 1890	C
225	E.	Lafayette Avenue	3 Story 3 Bay Stone Projecting Fronts	c. 1890	C
227	E.	Lafayette Avenue	3 Story 3 Bay Stone Projecting Fronts	c. 1890	C
229	E.	Lafayette Avenue	3 Story 3 Bay Stone Projecting Fronts	c. 1890	C
231	E.	Lafayette Avenue	3 Story 3 Bay Stone Projecting Fronts	c. 1890	C
233	E.	Lafayette Avenue	3 Story 3 Bay Stone Projecting Fronts	c. 1890	C
235	E.	Lafayette Avenue	3 Story 3 Bay Stone Projecting Fronts	c. 1890	C
237	E.	Lafayette Avenue	3 Story 3 Bay Stone Projecting Fronts	c. 1890	C

United States Department of the Interior
National Park Service

National Register of Historic Places Continuation Sheet

North Central Historic District B-1341

Name of Property

Baltimore (Independent City), Maryland

Section 7 Page 21

County and State

202	E.	Lafayette Avenue	3 Story 3 Bay Brick Traditional Row House	c. 1885	C
204	E.	Lafayette Avenue	3 Story 3 Bay Brick Traditional Row House	c. 1885	C
206	E.	Lafayette Avenue	3 Story 3 Bay Brick Traditional Row House	c. 1885	C
208	E.	Lafayette Avenue	3 Story 3 Bay Brick Traditional Row House	c. 1890	C
210	E.	Lafayette Avenue	3 Story 3 Bay Brick Traditional Row House	c. 1890	C
212	E.	Lafayette Avenue	3 Story 3 Bay Brick Traditional Row House	c. 1890	C
214	E.	Lafayette Avenue	3 Story 3 Bay Brick Traditional Row House	c. 1890	C
216	E.	Lafayette Avenue	3 Story 3 Bay Brick Traditional Row House	c. 1890	C
218	E.	Lafayette Avenue	3 Story 3 Bay Brick Traditional Row House	c. 1890	C
220	E.	Lafayette Avenue	3 Story 3 Bay Brick Traditional Row House	c. 1890	C
222	E.	Lafayette Avenue	3 Story 3 Bay Brick Traditional Row House	c. 1890	C
224	E.	Lafayette Avenue	3 Story 3 Bay Brick Traditional Row House	c. 1890	C
226	E.	Lafayette Avenue	3 Story 3 Bay Brick Traditional Row House	c. 1885	C
303	E.	Lafayette Avenue	3 Story 3 Bay Brick Eclectic Row House	c. 1885	C
305	E.	Lafayette Avenue	3 Story 3 Bay Brick Eclectic Row House	c. 1885	C
307	E.	Lafayette Avenue	3 Story 3 Bay Brick Eclectic Row House	c. 1885	C
309	E.	Lafayette Avenue	3 Story 3 Bay Brick Eclectic Row House	c. 1885	C
311	E.	Lafayette Avenue	3 Story 3 Bay Brick Eclectic Row House	c. 1885	C
313	E.	Lafayette Avenue	3 Story 3 Bay Brick Eclectic Row House	c. 1885	C
315	E.	Lafayette Avenue	3 Story 3 Bay Brick Eclectic Row House	c. 1885	C
317	E.	Lafayette Avenue	3 Story 3 Bay Brick Eclectic Row House	c. 1885	C
319	E.	Lafayette Avenue	3 Story 3 Bay Brick Eclectic Row House	c. 1885	C
321	E.	Lafayette Avenue	3 Story 3 Bay Brick Eclectic Row House	c. 1885	C
323	E.	Lafayette Avenue	3 Story 3 Bay Brick Eclectic Row House	c. 1885	C
325	E.	Lafayette Avenue	3 Story 3 Bay Brick Eclectic Row House	c. 1885	C
327	E.	Lafayette Avenue	3 Story 3 Bay Brick Eclectic Row House	c. 1885	C
329	E.	Lafayette Avenue	3 Story 3 Bay Brick Eclectic Row House	c. 1885	C
331	E.	Lafayette Avenue	3 Story 3 Bay Brick Eclectic Row House	c. 1885	C
302	E.	Lafayette Avenue	3 Story 3 Bay Brick Eclectic Row House	c. 1885	C
304	E.	Lafayette Avenue	3 Story 3 Bay Brick Eclectic Row House	c. 1885	C
306	E.	Lafayette Avenue	3 Story 3 Bay Brick Eclectic Row House	c. 1885	C
308	E.	Lafayette Avenue	3 Story 3 Bay Brick Eclectic Row House	c. 1885	C
310	E.	Lafayette Avenue	3 Story 3 Bay Brick Eclectic Row House	c. 1885	C
312	E.	Lafayette Avenue	3 Story 3 Bay Brick Eclectic Row House	c. 1885	C
314	E.	Lafayette Avenue	3 Story 3 Bay Brick Eclectic Row House	c. 1885	C
316	E.	Lafayette Avenue	3 Story 3 Bay Brick Eclectic Row House	c. 1885	C
318	E.	Lafayette Avenue	3 Story 3 Bay Brick Eclectic Row House	c. 1885	C
320	E.	Lafayette Avenue	3 Story 3 Bay Brick Eclectic Row House	c. 1885	C

United States Department of the Interior
National Park Service

National Register of Historic Places Continuation Sheet

North Central Historic District B-1341

Name of Property

Baltimore (Independent City), Maryland

Section 7 Page 22

County and State

322	E.	Lafayette Avenue	3 Story 3 Bay Brick Eclectic Row House	c. 1885	C
324	E.	Lafayette Avenue	3 Story 3 Bay Brick Eclectic Row House	c. 1885	C
326	E.	Lafayette Avenue	3 Story 3 Bay Brick Eclectic Row House	c. 1885	C
328	E.	Lafayette Avenue	3 Story 3 Bay Brick Eclectic Row House	c. 1885	C
330	E.	Lafayette Avenue	3 Story 3 Bay Brick Eclectic Row House	c. 1885	C
401	E.	Lafayette Avenue	3 Story 3 Bay Brick Traditional Row House	c. 1885	C
403	E.	Lafayette Avenue	3 Story 3 Bay Brick Traditional Row House	c. 1885	C
405	E.	Lafayette Avenue	3 Story 3 Bay Brick Traditional Row House	c. 1885	C
407	E.	Lafayette Avenue	3 Story 3 Bay Brick Traditional Row House	c. 1885	C
409	E.	Lafayette Avenue	3 Story 3 Bay Brick Traditional Row House	c. 1885	C
411	E.	Lafayette Avenue	3 Story 3 Bay Brick Traditional Row House	c. 1885	C
413	E.	Lafayette Avenue	3 Story 3 Bay Brick Traditional Row House	c. 1885	C
415	E.	Lafayette Avenue	3 Story 3 Bay Brick Traditional Row House	c. 1885	C
417	E.	Lafayette Avenue	3 Story 3 Bay Brick Traditional Row House	c. 1885	C
419	E.	Lafayette Avenue	3 Story 3 Bay Brick Traditional Row House	c. 1885	C
421	E.	Lafayette Avenue	3 Story 3 Bay Brick Traditional Row House	c. 1885	C
423	E.	Lafayette Avenue	3 Story 3 Bay Brick Traditional Row House	c. 1885	C
425	E.	Lafayette Avenue	3 Story 3 Bay Brick Traditional Row House	c. 1885	C
427	E.	Lafayette Avenue	Vacant Lot		
429	E.	Lafayette Avenue	3 Story 3 Bay Brick Traditional Row House	c. 1885	C
431-39	E.	Lafayette Avenue	Vacant Lot		
400	E.	Lafayette Avenue	Vacant Lot		
416	E.	Lafayette Avenue	3 Story 3 Bay Brick Traditional Row House	c. 1885	C
418	E.	Lafayette Avenue	3 Story 3 Bay Brick Traditional Row House	c. 1885	C
420	E.	Lafayette Avenue	3 Story 3 Bay Brick Traditional Row House	c. 1885	C
422	E.	Lafayette Avenue	3 Story 3 Bay Brick Traditional Row House	c. 1885	C
424	E.	Lafayette Avenue	3 Story 3 Bay Brick Traditional Row House	c. 1885	C
426	E.	Lafayette Avenue	3 Story 3 Bay Brick Traditional Row House	c. 1885	C
428	E.	Lafayette Avenue	3 Story 3 Bay Brick Traditional Row House	c. 1885	C
430	E.	Lafayette Avenue	3 Story 3 Bay Brick Traditional Row House	c. 1885	C
432	E.	Lafayette Avenue	3 Story 3 Bay Brick Traditional Row House	c. 1885	C
434	E.	Lafayette Avenue	3 Story 3 Bay Brick Traditional Row House	c. 1885	C
436	E.	Lafayette Avenue	3 Story 3 Bay Brick Traditional Row House	c. 1885	C
438	E.	Lafayette Avenue	3 Story 3 Bay Brick Traditional Row House	c. 1885	C

United States Department of the Interior
National Park Service

National Register of Historic Places Continuation Sheet

North Central Historic District B-1341

Name of Property

Baltimore (Independent City), Maryland

Section 7 Page 23

County and State

6-10	W.	Lanvale Street	1 Story Auto Brick Auto Repair Facility	c. 1960	NC
1	E.	Lanvale Street	Parking Lot		
20	E.	Lanvale Street	Parking Lot		
22	E.	Lanvale Street	3 Story 3 Bay Brick Traditional Row House	c. 1890	C
24	E.	Lanvale Street	3 Story 3 Bay Brick Traditional Row House	c. 1890	C
30	E.	Lanvale Street	Parking Lot		

201	E.	Lanvale Street	3 Story 2 Bay Brick Row House (fronts on Calvert)	c. 1890	C
200	E.	Lanvale Street	2 Story 3 Bay Tan Brick Bowed Front Row House	c. 1900	C
202	E.	Lanvale Street	2 Story 3 Bay Tan Brick Bowed Front Row House	c. 1900	C
204	E.	Lanvale Street	2 Story 3 Bay Tan Brick Bowed Front Row House	c. 1900	C
206	E.	Lanvale Street	2 Story 3 Bay Tan Brick Bowed Front Row House	c. 1900	C
208	E.	Lanvale Street	2 Story 3 Bay Tan Brick Bowed Front Row House	c. 1900	C
210	E.	Lanvale Street	2 Story 3 Bay Tan Brick Bowed Front Row House	c. 1900	C
212	E.	Lanvale Street	Vacant Lot		
301-9	E.	Lanvale Street	Parking Lot		
311	E.	Lanvale Street	3 Story 3 Bay Brick Eclectic Row House	c. 1885	C
313	E.	Lanvale Street	3 Story 3 Bay Brick Eclectic Row House	c. 1885	C
315	E.	Lanvale Street	3 Story 3 Bay Brick Eclectic Row House	c. 1885	C
317	E.	Lanvale Street	3 Story 3 Bay Brick Eclectic Row House	c. 1885	C
319	E.	Lanvale Street	3 Story 3 Bay Brick Eclectic Row House	c. 1885	C
321	E.	Lanvale Street	3 Story 3 Bay Brick Eclectic Row House	c. 1885	C
323	E.	Lanvale Street	3 Story 3 Bay Brick Eclectic Row House	c. 1885	C
325	E.	Lanvale Street	3 Story 3 Bay Brick Eclectic Row House	c. 1885	C
327	E.	Lanvale Street	3 Story 3 Bay Brick Eclectic Row House	c. 1885	C
329	E.	Lanvale Street	3 Story 3 Bay Brick Eclectic Row House	c. 1885	C
331	E.	Lanvale Street	3 Story 3 Bay Brick Eclectic Row House	c. 1885	C

United States Department of the Interior
National Park Service

National Register of Historic Places Continuation Sheet

North Central Historic District B-1341

Name of Property

Baltimore (Independent City), Maryland

Section 7 Page 24

County and State

302	E. Lanvale Street	3 Story 3 Bay Brick Traditional Row House	c. 1885	C
304	E. Lanvale Street	3 Story 3 Bay Brick Traditional Row House	c. 1885	C
306	E. Lanvale Street	3 Story 3 Bay Brick Traditional Row House	c. 1885	C
308	E. Lanvale Street	Vacant Lot		
310	E. Lanvale Street	3 Story 3 Bay Brick Eclectic Row House	c. 1885	C
312	E. Lanvale Street	3 Story 3 Bay Brick Eclectic Row House	c. 1885	C
314	E. Lanvale Street	3 Story 3 Bay Brick Eclectic Row House	c. 1885	C
316	E. Lanvale Street	3 Story 3 Bay Brick Eclectic Row House	c. 1885	C
318	E. Lanvale Street	3 Story 3 Bay Brick Eclectic Row House	c. 1885	C
320	E. Lanvale Street	3 Story 3 Bay Brick Eclectic Row (rebuilt front)	c. 1885	C

United States Department of the Interior
National Park Service

National Register of Historic Places Continuation Sheet

North Central Historic District B-1341

Name of Property

Baltimore (Independent City), Maryland

Section 7 Page 25

County and State

322	E. Lanvale Street	3 Story 3 Bay Brick Eclectic Row (rebuilt front)	c. 1885	C
324	E. Lanvale Street	3 Story 3 Bay Brick Eclectic Row (rebuilt front)	c. 1885	C
326	E. Lanvale Street	3 Story 3 Bay Brick Eclectic Row (rebuilt front)	c. 1885	C
401-23	E. Lanvale Street	Vacant Lot		
425	E. Lanvale Street	3 Story 3 Bay Brick Eclectic Row House	1883	C
427	E. Lanvale Street	3 Story 3 Bay Brick Eclectic Row House	1883	C
429	E. Lanvale Street	3 Story 3 Bay Brick Eclectic Row House	1883	C
431	E. Lanvale Street	3 Story 3 Bay Brick Eclectic Row House	1883	C
433	E. Lanvale Street	3 Story 3 Bay Brick Eclectic Row House	1883	C
435	E. Lanvale Street	3 Story 3 Bay Brick Eclectic Row House	1883	C
437	E. Lanvale Street	3 Story 3 Bay Brick Eclectic Row House	1883	C
439	E. Lanvale Street	3 Story 3 Bay Brick Eclectic Row House	1883	C
441	E. Lanvale Street	3 Story 3 Bay Brick Eclectic Row House	1883	C
443	E. Lanvale Street	3 Story 3 Bay Brick Eclectic Row House	1883	C
445	E. Lanvale Street	3 Story 3 Bay Brick Eclectic Row House	1883	C
447	E. Lanvale Street	3 Story 3 Bay Brick Eclectic Row House	1883	C
449	E. Lanvale Street	3 Story 3 Bay Brick Eclectic Row House	1883	C
402	E. Lanvale Street	3 Story 3 Bay Tan Brick Eclectic Row House	c. 1885	C
404	E. Lanvale Street	3 Story 3 Bay Tan Brick Eclectic Row House	c. 1885	C
406	E. Lanvale Street	3 Story 3 Bay Tan Brick Eclectic Row House	c. 1885	C
408	E. Lanvale Street	3 Story 3 Bay Tan Brick Eclectic Row House	c. 1885	C
410	E. Lanvale Street	3 Story 3 Bay Tan Brick Eclectic Row House	c. 1885	C
412	E. Lanvale Street	3 Story 3 Bay Tan Brick Eclectic Row House	c. 1885	C
414	E. Lanvale Street	3 Story 3 Bay Tan Brick Eclectic Row House	c. 1885	C
416	E. Lanvale Street	3 Story 3 Bay Tan Brick Eclectic Row House	c. 1885	C
418	E. Lanvale Street	3 Story 3 Bay Tan Brick Eclectic Row House	c. 1885	C
420	E. Lanvale Street	3 Story 3 Bay Tan Brick Eclectic Row House	c. 1885	C
422	E. Lanvale Street	3 Story 3 Bay Tan Brick Eclectic Row House	c. 1885	C
424	E. Lanvale Street	3 Story 3 Bay Tan Brick Eclectic Row House	c. 1885	C
426	E. Lanvale Street	3 Story 3 Bay Tan Brick Eclectic Row House	c. 1885	C
428	E. Lanvale Street	3 Story 3 Bay Tan Brick Eclectic Row House	c. 1885	C
430	E. Lanvale Street	3 Story 3 Bay Tan Brick Eclectic Row House	c. 1885	C
432	E. Lanvale Street	3 Story 3 Bay Tan Brick Eclectic Row House	c. 1885	C
434	E. Lanvale Street	3 Story 3 Bay Tan Brick Eclectic Row House	c. 1885	C
436	E. Lanvale Street	3 Story 3 Bay Tan Brick Eclectic Row House	c. 1885	C
438	E. Lanvale Street	3 Story 3 Bay Tan Brick Eclectic Row House	c. 1885	C

United States Department of the Interior
National Park Service

National Register of Historic Places Continuation Sheet

North Central Historic District B-1341

Name of Property

Baltimore (Independent City), Maryland

Section 7 Page 26

County and State

1603	Latrobe Street	Vacant Lot		
1605	Latrobe Street	2 Story 2 Bay Brick Alley Row House	c.1885	C
1607	Latrobe Street	2 Story 2 Bay Brick Alley Row House	c.1885	C
1609	Latrobe Street	2 Story 2 Bay Brick Alley Row House	c.1885	C
1611	Latrobe Street	2 Story 2 Bay Brick Alley Row House	c.1885	C
1613	Latrobe Street	2 Story 2 Bay Brick Alley Row House	c.1885	C
1615	Latrobe Street	2 Story 2 Bay Brick Alley Row House	c.1885	C
1617	Latrobe Street	2 Story 2 Bay Brick Alley Row House	c.1885	C
1619	Latrobe Street	2 Story 2 Bay Brick Alley Row House	c.1885	C
1621	Latrobe Street	2 Story 2 Bay Brick Alley Row House	c.1885	C
1623	Latrobe Street	2 Story 2 Bay Brick Alley Row House	c.1885	C
1600	Latrobe Street	2 Story 2 Bay Brick Alley Row House	c. 1890	C
1602	Latrobe Street	2 Story 2 Bay Brick Alley Row House	c. 1890	C
1604	Latrobe Street	2 Story 2 Bay Brick Alley Row House	c. 1890	C
1606	Latrobe Street	2 Story 2 Bay Brick Alley Row House	c. 1890	C
1608	Latrobe Street	2 Story 2 Bay Brick Alley Row House	c. 1890	C
1610	Latrobe Street	2 Story 2 Bay Brick Alley Row House	c. 1890	C
1612	Latrobe Street	2 Story 2 Bay Brick Alley Row House	c. 1890	C
1614	Latrobe Street	2 Story 2 Bay Brick Alley Row House	c. 1890	C
1616	Latrobe Street	2 Story 2 Bay Brick Alley Row House	c. 1890	C
1618	Latrobe Street	2 Story 2 Bay Brick Alley Row House	c. 1890	C
1620	Latrobe Street	2 Story 2 Bay Brick Alley Row House	c. 1890	C
1622	Latrobe Street	2 Story 2 Bay Brick Alley Row House	c. 1890	C
1624	Latrobe Street	2 Story 2 Bay Brick Alley Row House	c. 1890	C
1701	Latrobe Street	Vacant Lot		
1703	Latrobe Street	2 Story 2 Bay Brick Alley Row House	c. 1890	C
1705	Latrobe Street	2 Story 2 Bay Brick Alley Row House	c. 1890	C
1707	Latrobe Street	2 Story 2 Bay Brick Alley Row House	c. 1890	C
1709	Latrobe Street	2 Story 2 Bay Brick Alley Row House	c. 1890	C
1711	Latrobe Street	2 Story 2 Bay Brick Alley Row House	c. 1890	C
1713	Latrobe Street	2 Story 2 Bay Brick Alley Row House	c. 1890	C
1715	Latrobe Street	2 Story 2 Bay Brick Alley Row House	c. 1890	C
1717	Latrobe Street	2 Story 2 Bay Brick Alley Row House	c. 1890	C
1719	Latrobe Street	2 Story 2 Bay Brick Alley Row House	c. 1890	C

United States Department of the Interior
National Park Service

National Register of Historic Places Continuation Sheet

North Central Historic District B-1341

Name of Property

Baltimore (Independent City), Maryland

County and State

Section 7 Page 27

1700	Latrobe Street	Vacant Lot		
1702	Latrobe Street	2 Story 2 Bay Brick Alley Row House	c.1885	C
1704	Latrobe Street	2 Story 2 Bay Brick Alley Row House	c.1885	C
1706	Latrobe Street	2 Story 2 Bay Brick Alley Row House	c.1885	C
1708	Latrobe Street	2 Story 2 Bay Brick Alley Row House	c.1885	C
1710	Latrobe Street	2 Story 2 Bay Brick Alley Row House	c.1885	C
1712	Latrobe Street	2 Story 2 Bay Brick Alley Row House	c.1885	C
1714	Latrobe Street	2 Story 2 Bay Brick Alley Row House	c.1885	C
1716	Latrobe Street	2 Story 2 Bay Brick Alley Row House	c.1885	C
1718	Latrobe Street	2 Story 2 Bay Brick Alley Row House	c.1885	C
1801-05	Lovegrove Street	2 Story Brick Commercial Alley Building	c. 1890	C

United States Department of the Interior
National Park Service

National Register of Historic Places Continuation Sheet

North Central Historic District B-1341

Name of Property

Baltimore (Independent City), Maryland

Section 7 Page 28

County and State

1701-19	Maryland Avenue	Parking Lot		
1721	Maryland Avenue	3 Story 3 Bay Brick Traditional Row w/mansard	c. 1885	C
1723	Maryland Avenue	3 Story 3 Bay Brick Traditional Row w/mansard	c. 1885	C
1725	Maryland Avenue	3 Story 3 Bay Brick Traditional Row w/mansard	c. 1885	C
1727	Maryland Avenue	3 Story 3 Bay Brick Traditional Row w/mansard	c. 1885	C
1729	Maryland Avenue	3 Story 3 Bay Brick Traditional Row w/mansard	c. 1885	C
1731	Maryland Avenue	3 Story 3 Bay Brick Traditional Row w/mansard	c. 1885	C
1733-35	Maryland Avenue	3 Story Brick Eclectic Double Row House	c. 1885	C
1734	Maryland Avenue	3 Story Brick 4 Row House Group converted to Community Center	c. 1885	C
1803-1809	Maryland Avenue	Parking Lot		
1811-15	Maryland Avenue	2 Story Brick Auto Repair Shop	c. 1930	C
1817	Maryland Avenue	3 Story 3 Bay Brick Traditional Row House	c. 1885	C
1819	Maryland Avenue	Banking Drive-In Booth and Parking Lot	c. 1960	NC
1800	Maryland Avenue	3 Story 3 Bay Brick Traditional Row House	c. 1885	C
1802	Maryland Avenue	3 Story 3 Bay Brick Traditional Row House	c. 1885	C
1804	Maryland Avenue	3 Story 3 Bay Brick Traditional Row House	c. 1885	C
1806	Maryland Avenue	3 Story 3 Bay Brick Traditional Row House	c. 1885	C
1808	Maryland Avenue	3 Story 3 Bay Brick Traditional Row House	c. 1885	C
1810	Maryland Avenue	3 Story 3 Bay Brick Traditional Row House	c. 1885	C
1812-16	Maryland Avenue	3 Story 3 Bay Brick Traditional Row House	c. 1885	C
1818	Maryland Avenue	3 Story 3 Bay Brick Traditional Row House	c. 1885	C
1900	Maryland Avenue	4 Story Brick Neo-Classical Apartment House	c. 1900	C

209	McAlister Street	2 Story Brick Auto Repair Shop	c. 1920	C
403	McAlister Street	2 Story 2 Bay Brick Alley Row House	c. 1885	C
405	McAlister Street	2 Story 2 Bay Brick Alley Row House	c. 1885	C
407	McAlister Street	2 Story 2 Bay Brick Alley Row House	c. 1885	C
409	McAlister Street	2 Story 2 Bay Brick Alley Row House	c. 1885	C
411	McAlister Street	2 Story 2 Bay Brick Alley Row House	c. 1885	C
413	McAlister Street	2 Story 2 Bay Brick Alley Row House	c. 1885	C

United States Department of the Interior
National Park Service

National Register of Historic Places Continuation Sheet

North Central Historic District B-1341

Name of Property

Baltimore (Independent City), Maryland

Section 7 Page 29

County and State

1	W.	North Avenue	3 Story 3 Bay Brick Traditional Row House	c. 1885	C
3-9	W.	North Avenue	Brick Neo-Classical Theatre Building	1915	C
11-23	W.	North Avenue	1 Story Free Standing Brick Fast Food Restaurant	c. 1990	NC
25	W.	North Avenue	3 Story 3 Bay Brick Traditional Row House	c. 1885	C
27	W.	North Avenue	3 Story 3 Bay Brick Traditional Row House	c. 1885	C
29-31	W.	North Avenue	3 Story 6 Bay Stone Community Building	c. 1920	C
33	W.	North Avenue	3 Story 3 Bay Brick Traditional Row House	c. 1885	C
4	W.	North Avenue	3 Story Altered Stucco Front of Former Hotel	c. 1925	C
18	W.	North Avenue	1 Story Stone Spanish Revival Market House	1926	C
101	W.	North Avenue	1 Story Modern Stone and Brick Branch Bank	c. 1960	C
113	W.	North Avenue	4 Story 7 Bay Commercial Style Brick Warehouse	1915	C
133	W.	North Avenue	2 Story 4 Bay Brick Commercial Building	c. 1920	C
135-7	W.	North Avenue	2 Story Commercial Style Industrial Building	c. 1930	C
100	W.	North Avenue	1 Story Stone Neo-Classical Bank Branch Building	c. 1900	C
102	W.	North Avenue	3 Story 3 Bay Stone Traditional Row House	c. 1890	C
104	W.	North Avenue	3 Story 3 Bay Stone Traditional Row House	c. 1890	C
106	W.	North Avenue	3 Story 3 Bay Stone Traditional Row House	c. 1890	C
108	W.	North Avenue	4 Story 3 Bay Stone Row House w/mansard roof	c. 1890	C
110-18	W.	North Avenue	2 Story Modern Motel with Parking Courtyard	c. 1960	NC
120-26	W.	North Avenue	3 Story 3 Bay Brick Commercial Style Warehouse	c. 1915	C
128-30	W.	North Avenue	3 Story Stone Neo-Classical Commercial Building	c. 1940	C
200	W.	North Avenue	3 Story 8 Bay Brick Queen Anne Commercial Bldg.	1885	C

United States Department of the Interior
National Park Service

National Register of Historic Places Continuation Sheet

North Central Historic District B-1341

Name of Property

Baltimore (Independent City), Maryland

Section 7 Page 30

County and State

1	E. North Avenue	4 Story Brick Queen Anne Style Hotel	c. 1890	C
3	E. North Avenue	3 Story 3 Bay Moderne Yellow Brick Com. Building	c. 1930	C
5	E. North Avenue	3 Story 3 Bay Moderne Tan Brick Com. Building	c. 1930	C
7	E. North Avenue	2 Story 3 Bay Altered Theatre facade	c. 1900	C
11	E. North Avenue	Parking Lot		
21	E. North Avenue	2 Story Tudor Style Brick Commercial Building	c. 1925	C
23-5	E. North Avenue	2 Story Stone and Glass Modern Com. Building	c. 1960	NC
27	E. North Avenue	2 Story Stone Commercial Building	c. 1940	C
29	E. North Avenue	3 Story 3 Bay Glazed Brick Storefront	c. 1930	C
31	E. North Avenue	3 Story 4 Bay Eclectic Commercial Building	c. 1890	C
37-39	E. North Avenue	Vacant Lot/Billboard		
4-8	E. North Avenue	Parking Lot		
10-22	E. North Avenue	Stone Art Moderne Theatre Building w/marquee	1939	C
101	E. North Avenue	1 Story Brick Fast Food Restaurant	c. 1980	NC
131	E. North Avenue	3 Story 3 Bay Stone Eclectic Row House	c. 1890	C
133	E. North Avenue	3 Story 3 Bay Stone Eclectic Row House	c. 1890	C
135	E. North Avenue	3 Story 3 Bay Stone Eclectic Row House	c. 1890	C
137	E. North Avenue	3 Story 3 Bay Stone Eclectic Row House	c. 1890	C
139	E. North Avenue	3 Story 3 Bay Stone Eclectic Row House	c. 1890	C
141	E. North Avenue	3 Story 3 Bay Stone Eclectic Row House	c. 1890	C
143	E. North Avenue	4 Story 3 Bay Brick Eclectic House	c. 1890	C
201	E. North Avenue	3 Story Stone Eclectic Row House	c.1890	C
203	E. North Avenue	3 Story Stone Eclectic Row House	c.1890	C
205	E. North Avenue	3 Story Stone Eclectic Row House	c.1890	C
207	E. North Avenue	3 Story Stone Eclectic Row House	c.1890	C
209	E. North Avenue	3 Story Stone Eclectic Row House	c.1890	C
211	E. North Avenue	3 Story Stone Eclectic Row House	c.1890	C
213	E. North Avenue	3 Story Stone Eclectic Row House	c.1890	C
215	E. North Avenue	3 Story Stone Eclectic Row House	c.1890	C
217	E. North Avenue	3 Story Stone Eclectic Row House	c.1890	C
219	E. North Avenue	3 Story Stone Eclectic Row House	c.1890	C

United States Department of the Interior
National Park Service

National Register of Historic Places Continuation Sheet

North Central Historic District B-1341

Name of Property

Baltimore (Independent City), Maryland

County and State

Section 7 Page 31

219 1/2	E. North Avenue	3 Story 3 Bay Brick Traditional Row House	c. 1885	C
221	E. North Avenue	3 Story 3 Bay Brick Traditional Row House	c. 1885	C
223	E. North Avenue	Vacant Lot		
225	E. North Avenue	3 Story 3 Bay Brick Traditional Row House	c. 1885	C
227	E. North Avenue	3 Story 3 Bay Brick Traditional Row House	c. 1885	C
229	E. North Avenue	3 Story 3 Bay Brick Traditional Row House	c. 1885	C
231	E. North Avenue	3 Story 3 Bay Brick Traditional Row House	c. 1885	C
301-327	E. North Avenue	4 Story Brick Eclectic Row converted to Apartments	c. 1885	NR
331	E. North Avenue	3 Story 3 Bay Brick Traditional Row House	c. 1890	C
333	E. North Avenue	3 Story 3 Bay Brick Traditional Row House	c. 1890	C
335	E. North Avenue	3 Story 3 Bay Brick Traditional Row House	c. 1890	C
337	E. North Avenue	3 Story 3 Bay Brick Traditional Row House	c. 1890	C
401	E. North Avenue	2 Story 3 Bay Brick Traditional Row House	c. 1890	C
403	E. North Avenue	2 Story 3 Bay Brick Traditional Row House	c. 1890	C
405	E. North Avenue	2 Story 3 Bay Brick Traditional Row House	c. 1890	C
407	E. North Avenue	2 Story 3 Bay Brick Traditional Row House	c. 1890	C
409	E. North Avenue	2 Story 3 Bay Brick Traditional Row House	c. 1890	C
411	E. North Avenue	2 Story 3 Bay Brick Traditional Row House	c. 1890	C
413	E. North Avenue	2 Story 3 Bay Brick Traditional Row House	c. 1890	C
415	E. North Avenue	2 Story 3 Bay Brick Traditional Row House	c. 1890	C
417	E. North Avenue	2 Story 3 Bay Brick Traditional Row House	c. 1890	C
419	E. North Avenue	2 Story 3 Bay Brick Traditional Row House	c. 1890	C
421	E. North Avenue	2 Story 3 Bay Brick Traditional Row House	c. 1890	C
423-37	E. North Avenue	1 Story Brick and Stucco Pharmacy	c. 1995	NC
325-35	Oliver Street	2 Story Brick Industrial Building	c. 1920	C
401-3	Oliver Street	3 Story 2 Bay Brick Industrial Building	c. 1900	C
405-13	Oliver Street	3 Story 2 Bay Brick Industrial Building	c. 1900	C
1415-17	Oliver Street	4 Story Brick Industrial Building - filled in arches	c. 1900	C
419-33	Oliver Street	4 Story Warehouse - altered windows	c. 1940	C

United States Department of the Interior
National Park Service

National Register of Historic Places Continuation Sheet

North Central Historic District B-1341

Name of Property

Baltimore (Independent City), Maryland

Section 7 Page 32

County and State

400	Oliver Street	2 Story 3 Bay Brick Bowed Front Row House	c. 1900	C
402	Oliver Street	2 Story 3 Bay Brick Bowed Front Row House	c. 1900	C
404	Oliver Street	2 Story 3 Bay Brick Bowed Front Row House	c. 1900	C
406	Oliver Street	2 Story 3 Bay Brick Bowed Front Row House	c. 1900	C
408	Oliver Street	2 Story 3 Bay Brick Bowed Front Row House	c. 1900	C
410	Oliver Street	2 Story 3 Bay Brick Bowed Front Row House	c. 1900	C
412	Oliver Street	2 Story 3 Bay Brick Bowed Front Row House	c. 1900	C
414	Oliver Street	2 Story 3 Bay Brick Bowed Front Row House	c. 1900	C
416	Oliver Street	2 Story 3 Bay Brick Bowed Front Row House	c. 1900	C
418	Oliver Street	2 Story 3 Bay Brick Bowed Front Row House	c. 1900	C
420	Oliver Street	2 Story 3 Bay Brick Bowed Front Row House	c. 1900	C
422	Oliver Street	2 Story 3 Bay Brick Bowed Front Row House	c. 1900	C

United States Department of the Interior
National Park Service

North Central Historic District B-1341

National Register of Historic Places Continuation Sheet

Name of Property

Baltimore (Independent City), Maryland

Section 7 Page 33

County and State

401	Pittman Place	2 Story 2 Bay Brick Alley Row House	c.1885	C
403	Pittman Place	2 Story 2 Bay Brick Alley Row House	c.1885	C
405	Pittman Place	2 Story 2 Bay Brick Alley Row House	c.1885	C
407	Pittman Place	2 Story 2 Bay Brick Alley Row House	c.1885	C
409	Pittman Place	2 Story 2 Bay Brick Alley Row House	c.1885	C
411	Pittman Place	2 Story 2 Bay Brick Alley Row House	c.1885	C
413	Pittman Place	2 Story 2 Bay Brick Alley Row House	c.1885	C
415	Pittman Place	2 Story 2 Bay Brick Alley Row House	c.1885	C
417	Pittman Place	2 Story 2 Bay Brick Alley Row House	c.1885	C
419	Pittman Place	2 Story 2 Bay Brick Alley Row House	c.1885	C
421-23	Pittman Place	Vacant Lot		
435	Pittman Place	2 Story 2 Bay Brick Alley Row House	c.1885	C
427	Pittman Place	2 Story 2 Bay Brick Alley Row House	c.1885	C
429	Pittman Place	2 Story 2 Bay Brick Alley Row House	c.1885	C
431	Pittman Place	2 Story 2 Bay Brick Alley Row House	c.1885	C
433	Pittman Place	2 Story 2 Bay Brick Alley Row House	c.1885	C
435	Pittman Place	2 Story 2 Bay Brick Alley Row House	c.1885	C
437	Pittman Place	2 Story 2 Bay Brick Alley Row House	c.1885	C
439	Pittman Place	2 Story 2 Bay Brick Alley Row House	c.1885	C
441	Pittman Place	2 Story 2 Bay Brick Alley Row House	c.1885	C
443	Pittman Place	2 Story 2 Bay Brick Alley Row House	c.1885	C
445	Pittman Place	2 Story 2 Bay Brick Alley Row House	c.1885	C
447	Pittman Place	2 Story 2 Bay Brick Alley Row House	c.1885	C
449	Pittman Place	2 Story 2 Bay Brick Alley Row House	c.1885	C
451	Pittman Place	2 Story 2 Bay Brick Alley Row House	c.1885	C
453	Pittman Place	2 Story 2 Bay Brick Alley Row House	c.1885	C
455	Pittman Place	2 Story 2 Bay Brick Alley Row House	c.1885	C
457	Pittman Place	2 Story 2 Bay Brick Alley Row House	c.1885	C
459	Pittman Place	2 Story 2 Bay Brick Alley Row House	c.1885	C

United States Department of the Interior
National Park Service

National Register of Historic Places Continuation Sheet

North Central Historic District B-1341

Name of Property

Baltimore (Independent City), Maryland

Section 7 Page 34

County and State

400	Pittman Place	2 Story 2 Bay Brick Alley Row House	c.1885	C
402	Pittman Place	2 Story 2 Bay Brick Alley Row House	c.1885	C
404	Pittman Place	2 Story 2 Bay Brick Alley Row House	c.1885	C
406	Pittman Place	2 Story 2 Bay Brick Alley Row House	c.1885	C
408	Pittman Place	2 Story 2 Bay Brick Alley Row House	c.1885	C
410	Pittman Place	2 Story 2 Bay Brick Alley Row House	c.1885	C
412	Pittman Place	2 Story 2 Bay Brick Alley Row House	c.1885	C
414	Pittman Place	2 Story 2 Bay Brick Alley Row House	c.1885	C
416	Pittman Place	2 Story 2 Bay Brick Alley Row House	c.1885	C
418	Pittman Place	2 Story 2 Bay Brick Alley Row House	c.1885	C
420	Pittman Place	2 Story 2 Bay Brick Alley Row House	c.1885	C
422	Pittman Place	Vacant Lot		
424	Pittman Place	2 Story 2 Bay Brick Alley Row House	c.1885	C
426	Pittman Place	2 Story 2 Bay Brick Alley Row House	c.1885	C
428	Pittman Place	2 Story 2 Bay Brick Alley Row House	c.1885	C
430	Pittman Place	2 Story 2 Bay Brick Alley Row House	c.1885	C
432	Pittman Place	2 Story 2 Bay Brick Alley Row House	c.1885	C
434	Pittman Place	2 Story 2 Bay Brick Alley Row House	c.1885	C
436	Pittman Place	2 Story 2 Bay Brick Alley Row House	c.1885	C
438	Pittman Place	2 Story 2 Bay Brick Alley Row House	c.1885	C
440	Pittman Place	2 Story 2 Bay Brick Alley Row House	c.1885	C
442	Pittman Place	2 Story 2 Bay Brick Alley Row House	c.1885	C
444	Pittman Place	2 Story 2 Bay Brick Alley Row House	c.1885	C
446	Pittman Place	2 Story 2 Bay Brick Alley Row House	c.1885	C
448	Pittman Place	2 Story 2 Bay Brick Alley Row House	c.1885	C
450	Pittman Place	2 Story 2 Bay Brick Alley Row House	c.1885	C
452	Pittman Place	2 Story 2 Bay Brick Alley Row House	c.1885	C
454	Pittman Place	2 Story 2 Bay Brick Alley Row House	c.1885	C
456	Pittman Place	2 Story 2 Bay Brick Alley Row House	c.1885	C
458	Pittman Place	2 Story 2 Bay Brick Alley Row House	c.1885	C

United States Department of the Interior
National Park Service

National Register of Historic Places Continuation Sheet

North Central Historic District B-1341

Name of Property

Baltimore (Independent City), Maryland

Section 7 Page 35

County and State

1601	St. Paul Street	3 Story 3 Bay Tan Brick Eclectic Row w/mansard	c.1890	NR
1603	St. Paul Street	3 Story 3 Bay Tan Brick Eclectic Row w/mansard	c.1890	NR
1605	St. Paul Street	3 Story 3 Bay Tan Brick Eclectic Row w/mansard	c.1890	NR
1607	St. Paul Street	3 Story 3 Bay Tan Brick Eclectic Row w/mansard	c.1890	NR
1609	St. Paul Street	3 Story 3 Bay Tan Brick Eclectic Row w/mansard	c.1890	NR
1611	St. Paul Street	3 Story 3 Bay Tan Brick Eclectic Row w/mansard	c.1890	NR
1613	St. Paul Street	3 Story 3 Bay Tan Brick Eclectic Row w/mansard	c.1890	NR
1615	St. Paul Street	3 Story 3 Bay Tan Brick Eclectic Row w/mansard	c.1890	NR
1617	St. Paul Street	3 Story 3 Bay Tan Brick Eclectic Row w/mansard	c.1890	NR
1619	St. Paul Street	3 Story 3 Bay Tan Brick Eclectic Row w/mansard	c.1890	NR
1621	St. Paul Street	3 Story 3 Bay Tan Brick Eclectic Row w/mansard	c.1890	NR
1623	St. Paul Street	3 Story 3 Bay Tan Brick Eclectic Row w/mansard	c.1890	NR
1625	St. Paul Street	3 Story 3 Bay Tan Brick Eclectic Row w/mansard	c.1890	NR
1627	St. Paul Street	3 Story 3 Bay Tan Brick Eclectic Row w/mansard	c.1890	NR
1629	St. Paul Street	3 Story 3 Bay Tan Brick Eclectic Row w/mansard	c.1890	NR
1701	St. Paul Street	3 Story 3 Bay Stone Row w/projecting bays	c.1890	NR
1703-5	St. Paul Street	3 Story 3 Bay Stone Row w/projecting bays	c.1890	NR
1707	St. Paul Street	3 Story 3 Bay Stone Row w/projecting bays	c.1890	NR
1709	St. Paul Street	3 Story 3 Bay Stone Row w/projecting bays	c.1890	NR
1711	St. Paul Street	3 Story 3 Bay Stone Row w/projecting bays	c.1890	NR
1713	St. Paul Street	3 Story 3 Bay Stone Row w/projecting bays	c.1890	NR
1715	St. Paul Street	3 Story 3 Bay Tan Brick Bowed Row House	c. 1900	NR
1717	St. Paul Street	3 Story 3 Bay Tan Brick Bowed Row House	c. 1900	NR
1719	St. Paul Street	3 Story 3 Bay Tan Brick Bowed Row House	c. 1900	NR
1721	St. Paul Street	3 Story 3 Bay Tan Brick Bowed Row House	c. 1900	NR
1723	St. Paul Street	3 Story 3 Bay Tan Brick Bowed Row House	c. 1900	NR
1725	St. Paul Street	3 Story 3 Bay Tan Brick Bowed Row House	c. 1900	NR
1727	St. Paul Street	3 Story 3 Bay Tan Brick Bowed Row House	c. 1900	NR
1729	St. Paul Street	3 Story 3 Bay Tan Brick Bowed Row House	c. 1900	NR
1731	St. Paul Street	Park		

United States Department of the Interior
National Park Service

National Register of Historic Places Continuation Sheet

North Central Historic District B-1341

Name of Property

Baltimore (Independent City), Maryland

County and State

Section 7 Page 36

1700	St. Paul Street	4 Story 3 Bay Tan Brick Row House	c. 1900	NR
1702	St. Paul Street	3 Story Tan Brick and Stone Eclectic Row House	c. 1890	NR
1704	St. Paul Street	3 Story Tan Brick and Stone Eclectic Row House	c. 1890	NR
1706	St. Paul Street	3 Story Tan Brick and Stone Eclectic Row House	c. 1890	NR

United States Department of the Interior
National Park Service

National Register of Historic Places Continuation Sheet

North Central Historic District B-1341

Name of Property

Baltimore (Independent City), Maryland

Section 7 Page 37

County and State

1708	St. Paul Street	3 Story 3 Bay Stone Row w/projecting bays	c. 1890	NR
1710	St. Paul Street	3 Story 3 Bay Stone Row w/projecting bays	c. 1890	NR
1712	St. Paul Street	3 Story 3 Bay Stone Row w/projecting bays	c. 1890	NR
1714	St. Paul Street	3 Story 3 Bay Stone Row w/projecting bays	c. 1890	NR
1716	St. Paul Street	3 Story 3 Bay Brick Traditional Row House	c. 1885	NR
1718	St. Paul Street	3 Story 2 Bay Stone Row House	c. 1890	NR
1720-2	St. Paul Street	3 Story 5 Bay Neo-Classical Apartment House	c. 1900	NR
1724	St. Paul Street	4 Story 2 Bay Brick Queen Anne Row House	c. 1890	NR
1726	St. Paul Street	4 Story 2 Bay Brick Queen Anne Row House	c. 1890	NR
1728	St. Paul Street	4 Story 2 Bay Brick Queen Anne Row House	c. 1890	NR
1730	St. Paul Street	4 Story 2 Bay Brick Queen Anne Row House	c. 1890	NR
1732	St. Paul Street	4 Story 2 Bay Brick Queen Anne Row House	c. 1890	NR
1734	St. Paul Street	4 Story 2 Bay Brick Queen Anne Row House	c. 1890	NR
1801	St. Paul Street	3 Story 3 Bay Brick Eclectic Row House	c. 1885	NR
1803	St. Paul Street	3 Story 3 Bay Brick Eclectic Row House	c. 1885	NR
1805	St. Paul Street	3 Story 3 Bay Brick Eclectic Row House	c. 1885	NR
1807	St. Paul Street	3 Story 3 Bay Brick Eclectic Row House	c. 1885	NR
1809	St. Paul Street	3 Story 3 Bay Brick Eclectic Row House	c. 1885	NR
1811	St. Paul Street	3 Story 3 Bay Brick Eclectic Row House	c. 1885	NR
1813	St. Paul Street	3 Story 3 Bay Brick Eclectic Row House	c. 1885	NR
1815	St. Paul Street	3 Story 3 Bay Brick Eclectic Row House	c. 1885	NR
1817-19	St. Paul Street	Parking Lot		
1800	St. Paul Street	3 Story 3 Bay Brick Eclectic Row House	c. 1885	NR
1802	St. Paul Street	3 Story 3 Bay Brick Eclectic Row House	c. 1885	NR
1804	St. Paul Street	3 Story 3 Bay Brick Eclectic Row House	c. 1885	NR
1806	St. Paul Street	3 Story 3 Bay Brick Eclectic Row House	c. 1885	NR
1808	St. Paul Street	3 Story 3 Bay Brick Eclectic Row House	c. 1885	NR
1810	St. Paul Street	3 Story 3 Bay Brick Eclectic Row House	c. 1885	NR
1812	St. Paul Street	3 Story 3 Bay Brick Eclectic Row House	c. 1885	NR
1814	St. Paul Street	3 Story 3 Bay Brick Eclectic Row House	c. 1885	NR
1816	St. Paul Street	3 Story 3 Bay Stone Row House	c. 1890	NR
1818	St. Paul Street	3 Story 3 Bay Stone Row House	c. 1890	NR
1820	St. Paul Street	3 Story 3 Bay Stone Row House	c. 1890	NR
1822	St. Paul Street	3 Story 3 Bay Stone Row House	c. 1890	NR
1824	St. Paul Street	3 Story 3 Bay Stone Row House	c. 1890	NR
1826	St. Paul Street	3 Story 3 Bay Stone Row House	c. 1890	NR
1828	St. Paul Street	3 Story 3 Bay Stone Row House	c. 1890	NR
1830	St. Paul Street	3 Story 3 Bay Stone Row House	c. 1890	NR

United States Department of the Interior
National Park Service

National Register of Historic Places Continuation Sheet

North Central Historic District B-1341

Name of Property

Baltimore (Independent City), Maryland

County and State

Section 7 Page 38

124-132	Trenton Street	2 Story Brick Alley Commercial Building	c. 1920	C
101	Trenton Street	2 Story Brick Alley Commercial Building	c. 1920	C

The following buildings are non-contributing:

1418 Belvidere Street
1714 N. Charles Street
1510 Guilford Avenue
1803-17 Guilford Avenue
10 E. Lafayette Avenue
9-13 West Lafayette Avenue
6-10 W. Lanvale Street
11-23 W. North Avenue
101 W. North Avenue
110-118 W. North Avenue
23-25 E. North Avenue
101 E. North Avenue
423-27 E. North Avenue
1819 Maryland Avenue

Name of Property

County and State

8. Statement of Significance

Applicable National Register Criteria

(Mark "x" in one or more boxes for the criteria qualifying the property for National Register listing)

- A Property is associated with events that have made a significant contribution to the broad pattern of our history.
B Property associated with the lives of persons significant in our past.
C Property embodies the distinctive characteristics of a type, period, or method of construction or represents the work of a master, or possesses high artistic values, or represents a significant and distinguishable entity whose components lack individual distinction.
D Property has yielded, or is likely to yield, information important in prehistory or history.

Criteria Considerations

(Mark "x" in all the boxes that apply)

Property is:

- A owned by a religious institution or used for religious purposes.
B removed from its original location.
C a birthplace or grave.
D a cemetery.
E a reconstructed building, object, or structure.
F a commemorative property.
G less than 50 years of age or achieved significance within the past 50 years.

Narrative Statement of Significance

(Explain the significance of the property on one or more continuation sheets)

Area of Significance

(Enter categories from instructions)

ARCHITECTURE
COMMERCE

Period of Significance

1880 - 1941

Significant Dates

Significant Person

(Complete if Criterion B is marked above)

Cultural Affiliation

Architect/Builder

Various architects, including Smith & May; Jackson Gott; George Archer and others

9. Major Bibliographical References

Bibliography

(Cite the books, articles, and other sources used in preparing this form on one or more continuation sheets)

Previous documentation on files (NPS):

- preliminary determination of individual listing (36 CFR 67) has been requested
previously listed in the National Register
previously determined eligible by the National Register
designated a National Historic Landmark
recorded by HABS; #
recorded by HAER; #

Primary location of additional data:

- State Historic Preservation Office
Other State agency
Federal agency
Local government
University
Other—Name of repository:

United States Department of the Interior
National Park Service

National Register of Historic Places Continuation Sheet

North Central Historic District B-1341

Name of Property

Baltimore (Independent City), Maryland

County and State

Section 8 Page 1

Summary Statement of Significance:

The North Central Historic District is architecturally significant under National Register Criterion "C." The area embodies the distinctive characteristics of a late-nineteenth century to mid-twentieth century mixed-use, urban neighborhood comprising a variety of row housing and other commercial/industrial buildings. While there are many individually distinctive buildings within the district, the majority of buildings represent the evolution of row housing from the traditional to more eclectic types. A broad variety of sizes and types reflects the diversity of the neighborhood's residents, ranging from the large and architecturally elaborate dwellings of the upper class to the small alley houses of working-class African Americans. Although the majority of structures are residential, there are many small-scale commercial buildings and multi-story industries.

The North Central Historic District derives additional significance under National Register Criterion "A" for its association with the economic development of Baltimore during the period. At the turn of the twentieth century, the neighborhood was multi-functional; housing, businesses and factories in close proximity created a dynamic character often missing in later urban and suburban developments. The North Central area featured a theatre district and an important retail center including a privately owned market house comparable to municipal markets downtown and in other city neighborhoods. Significant industrial buildings rivaled downtown lofts. Noteworthy industries included Crown Cork & Seal and Noxema, nationally known companies that provided employment for many area residents. The neighborhood remained an important center of residence, business and industry until World War II, after which many people moved to the suburbs and businesses closed. Located within a corridor of historic neighborhoods in central Baltimore (Mount Vernon, Old Goucher, Charles Village, Guilford, Homeland and Roland Park), the North Central district completes a nearly unbroken chain of historic neighborhoods reflecting the migration of Baltimore residents from downtown to the northern suburbs.

Resource History and Historic Context:

The North Central area is comparable in age and type of buildings to other existing Baltimore City historic districts, most notably Mount Vernon directly to the south and the Old Goucher Historic District to the north. The major difference between this area and the others is

United States Department of the Interior
National Park Service

National Register of Historic Places Continuation Sheet

North Central Historic District B-1341

Name of Property

Baltimore (Independent City), Maryland

County and State

Section 8 Page 2

that it not only includes fine residential architecture, but the scale of business development is larger due to the crossroads of major streets and significant industrial buildings were built here due to the proximity of the railroad tracks. In many ways, this was a business and entertainment center only comparable to parts of downtown. Although other neighborhood business districts can be found outside the downtown area, the presence of a privately developed market house, automobile dealerships, major restaurants and huge movie theatres attracted customers throughout Baltimore City.

Prior to 1880, the Jones Falls cut off North Central from the rest of Baltimore City. A single, narrow bridge spanned the Jones Falls at Charles Street and a second bridge connected Guilford Avenue in the vicinity of Biddle Street to Greenmount Avenue along the lines of Belvidere Street. While the city was spreading out to the east and west, John Eager Howard's Belvedere estate remained undeveloped blocking growth to the north.

These roadblocks to growth were eliminated, first in 1876, when the Belvedere estate was sold off for development, and later in 1880, when substantial bridges were constructed at St. Paul Street, Calvert Street and Guilford Avenue. During this time period, Baltimore was prospering and the area directly north of Mount Vernon was ripe for the expansion of upper and middle class housing. The development of street railway lines also assisted the growth of this neighborhood providing an easy commute for residents traveling downtown.

Tremendous growth took place in Baltimore City from 1880 through 1900. The population grew from 332,000 to 509,000, a 53% increase. This is also the time period when row house development took place in North Central. Larger three story houses were built on the main streets leading directly from the Central Business District (Maryland Avenue, Charles Street, St. Paul Street and Calvert Street) while smaller two story workers housing was built in the western portion of the community.

The style of residential buildings in the district reflects the changes that took place in row house design in Baltimore City. Traditional Baltimore row housing evolved from the English tradition of Georgian terraces. Like their European predecessor, Baltimore rows featured brick, flat facades with little exterior ornamentation. While the earliest Baltimore houses had gabled roofs and dormers and later houses featured bracketed wood cornices with roofs gently sloped to the rear, facades remained largely unadorned for nearly a century. Size and proportions

United States Department of the Interior
National Park Service

National Register of Historic Places Continuation Sheet

North Central Historic District B-1341

Name of Property

Baltimore (Independent City), Maryland

Section 8 Page 3

County and State

distinguished the houses of wealthy residents from working class houses, but the basic building facade was largely indistinguishable.

With the growth in architect designed buildings and the proliferation of building journals illustrating new styles and designs, the design of row houses underwent a transformation starting in the last quarter of the twentieth century. Variations in row house design from 1875 to 1915 included new materials (stone or Roman brick versus red brick); decorative panels in terra cotta or carved stone details; projecting brick work and decorative balconies; band courses of brick, stone and terra cotta; alternative rooflines defined by corbelled brick, pediments, tile roofs or mansard roofs with dormers; asymmetrical designs; projecting bays or bowed fronts; and unusual window styles. All of these row houses variations can be found in the North Central district.

Noted builders were responsible for the row housing in this neighborhood. Benjamin Bennett, Hiram Woods, Lawrence Turnbull and O. F. Breese were among the builders. Important Baltimore businessmen and civic leaders occupied the many fine residences constructed in the North Central area. They include: J. A. Dunham, principal of Boys Latin School; Cephus D. McFarland, a prominent attorney; Edmund Sattler, founder of Sattler & Company; and Professor Thomas Craig of Johns Hopkins University. Perhaps the most famous resident was Sidney Lanier, a noted American poet who lived in the 1800 block of North Calvert Street shortly before his death in the 1880s.

The neighborhood was not exclusively residential, large businesses and industries were attracted to sites adjacent to the railroad tracks running along the Jones Falls Valley. In 1885, Denny and Mitchell, undertakers, built a large establishment and stables at the northwest corner of Howard Street and North Avenue. Designed by George Archer, architect, and built by John Waters, the three story high 100' x 120' building featured a corner tower. It later housed an automobile dealership, Oriole Pontiac, in the early twentieth century.

The Morgan Millwork building nearby at 113 West North Avenue is another noteworthy, large industrial structure along the southern boundary of the neighborhood. Other industrial buildings dating from the early twentieth century located along Oliver Street including the 6 story high Lord Baltimore Press Building (demolished) that stood at the northwest corner of Oliver Street and Greenmount Avenue.

United States Department of the Interior
National Park Service

National Register of Historic Places Continuation Sheet

North Central Historic District B-1341

Name of Property

Baltimore (Independent City), Maryland

County and State

Section 8 Page 4

Crown Cork and Seal, the inventors of the modern bottle cap, established a large manufacturing plant at Guilford Avenue and Oliver Street in 1896. In the late nineteenth century, carbonated beverages were becoming popular throughout the country; however an appropriate bottle cap had not been invented. Hundreds of methods were used requiring different seals and devices to extract the cap. In 1892, William Painter, a local inventor, came up with a simple design that revolutionized the bottle cap industry. A small lip at the end of a bottle could be enclosed by a crown shaped metal cap containing a thin piece of cork that provided an effective seal, hence the name crown, cork and seal. The cap would be crimped over the bottle top effectively containing the pressure from carbonated beverages.

This invention spawned an industry to both manufacture hundreds of thousand of bottle caps every year and the machines to crimp the cap on to bottles. Within four years the demand for this bottle cap lead to the construction of the first Crown, Cork and Seal buildings at Guilford Avenue and Oliver Street, designed by Jackson Gott, a local architect. He also designed the first expansion of the plant at 1601 Guilford Avenue in 1898. The plant expanded on Federal Street in 1906 and at the corner of Oliver Street and Barclay Street in 1914, eventually taking up one and one-half city blocks. This tremendous early twentieth century manufacturing enterprise eventually outgrew these large buildings and relocated to Highlandtown.

The bottle cap invented in Baltimore and first used in mass production when Crown Cork and Seal was located in the North Central area, was utilized for approximately 75 years. The invention of screw off plastic tops replaced the old crown style top for most carbonated beverages in the last quarter of the twentieth century; however versions of the crown tops are still used on bottled beer, although a plastic seal has replaced the cork insert.

Noxema also originated in the North Central area. Invented as a sunburn remedy by George Bunting, a pharmacist at 6 West North Avenue, the first jars of the skin cream were produced at the unassuming row house at 102 West Lafayette Avenue. As the product grew in popularity, manufacturing facilities were built near Hampden and later moved to Hunt Valley. By time the corporation was sold to Proctor and Gamble in 1990, the Noxell Company had annual sales of more than \$500 million dollars for Noxema Skin Cream and Cover Girl Cosmetics.

United States Department of the Interior
National Park Service

National Register of Historic Places Continuation Sheet

North Central Historic District B-1341

Name of Property

Baltimore (Independent City), Maryland

County and State

Section 8 Page 5

The commercial development of this area is also linked to the history of North Avenue, a major crossroad that influenced growth. As early as 1852, "Boundary Avenue" was envisioned as a grand boulevard that would encircle Baltimore City. North Avenue marked the northern city boundary until 1889 and an extremely wide street was laid out with landscaped medians between Howard Street and Charles Street, known as Taney Place. Large houses and institutions originally located along this wide boulevard on the outskirts of town, but as urban development overtook central Baltimore, major commercial establishments located here. A market building, theatres, banks and restaurants were attracted to this crossroads of major streets and streetcar lines.

An entertainment center developed near Charles Street and North Avenue in the early twentieth century. The Parkway Theatre at 5 West North Avenue is the largest theatre structure in the area. It was built in 1915 and modeled after the West End Theatre in Leicester Square in London. The Aurora Theatre at 7 East North Avenue dates from 1910. On the vacant lot next to this building stood the Peabody Theatre. Across the street at 10 West North Avenue was the Centre Theatre and studios for WFBR radio. Designed for Morris Mechanic in 1939 in the Art Deco style, it is the only North Avenue theatre building retaining its marquee. Although none of these theatres are currently operating, this portion of North Avenue was an important entertainment venue through the 1960s. Besides movies, Baltimore's major local performing arts theatre, Center Stage, began in the former Peabody Theatre on North Avenue.

The Charles Theatre in 1700 block of Charles Street still functions as a movie house. It originally opened in 1939 as the Times, a newsreel theatre. The building was originally a car barn of the United Railways and Electric Company. Another part of the building was a ballroom, but has since been added to the movie theatre complex. Everyman's Theatre, next door, is housed in a former 1909 bowling alley.

Restaurants located near these theatres. The Oriole Café, a notable restaurant with other locations downtown, had a branch on North Avenue. The Chesapeake Restaurant, just south of the Charles Theatre was another important local eatery. Other compatible commercial uses included two hotels, the Waldorf and the Chateau. The Chateau still standing in an altered state at the northwest corner of Charles Street and North Avenue was known for its roof garden featuring live bands. The Famous Ball Room, an important jazz club, stood next to the Charles Theatre. An ice skating center next door to the Centre Theatre rounded out entertainment venues in the North Central area.

United States Department of the Interior
National Park Service

National Register of Historic Places Continuation Sheet

North Central Historic District B-1341

Name of Property

Baltimore (Independent City), Maryland

County and State

Section 8 Page 6

The North Avenue Market built at the northeast corner of Maryland Avenue and North Avenue was Baltimore's only privately owned market house. Designed by architects Smith and May in the Spanish Revival style, it dates from 1926. While Baltimore City has operated municipally owned market houses since the early nineteenth century, this was Baltimore's first privately owned venture in this type of retailing. The North Avenue Market had over 250 market stalls, a pharmacy and bowling alleys.

Two banks located on North Avenue at Maryland Avenue and at Charles Street in the early twentieth century. Security Storage Company, a massive six story building with few windows. stood next to the Parkway Theatre. It has been replaced by a McDonald's fast food restaurant.

By the 1920s, the landscaped median of North Avenue, Taney Place, was replaced with automobile parking to accommodate the traffic generated at this commercial center. It wasn't until the 1980s that new landscaping (albeit on a smaller scale) was reintroduced on North Avenue and decorative light fixtures installed in an attempt to improve the appearance of the neighborhood.

As the area aged and residents moved out to the suburbs after World War II, the commercial aspect of the North Central area declined. The reliance on the automobile for shopping trips and end of streetcar service in 1963 furthered the decline. Some business properties were replaced with parking lots. The privately owned North Avenue Market was damaged by fire, and part of the building was replaced by elderly housing. As the area declined, vacant properties became a persistent problem. Many buildings were demolished in the last decade, especially along the eastern portion of the neighborhood.

At the same time, some housing in the area underwent revitalization. The 1600 through 1800 blocks of St. Paul Street were designated a historic district in 1984. Many houses were renovated for residents attracted by the proximity to Penn Station. The Charles Theatre has recently expanded to multiple screens. Other popular night spots on the block, such as the Club Charles and Everyman's Theatre, has recaptured the excitement of this neighborhood's historic theatre environment. The Schuler Art School remains in the area and some former industrial buildings now house artist studios.

United States Department of the Interior
National Park Service

National Register of Historic Places Continuation Sheet

North Central Historic District B-1341

Name of Property

Baltimore (Independent City), Maryland

County and State

Section 8 Page 7

In November 2001, this area was designated an Arts and Entertainment District by the City of Baltimore. Upon approval by the Maryland Department of Business and Economic Development, such areas can qualify for substantial tax credits and state funding for art and entertainment related projects. Historic designation may also assist in these efforts to not only revitalize this particular aspect of the community, but to also preserve significant historical and architectural structures. Historic designation will also complete the chain of historic districts in central Baltimore stretching from the Financial District to Guilford, Roland Park and Homeland.

United States Department of the Interior
National Park Service

National Register of Historic Places Continuation Sheet

North Central Historic District B-1341

Name of Property

Baltimore (Independent City), Maryland

County and State

Section 9 Page 1

Major Bibliographical References:

Engelhardt, George W. Baltimore: The Book of its Board of Trade. 1898.

Farrell, Michael R. Who Made All Our Streetcars Go? NRHS Publications: Baltimore 1973.

Hayward, Mary Ellen and Belfoure, Charles. The Baltimore Row House. Princeton
Architectural Press: New York 1999.

Headley, Robert K. Exit: A History of Movies in Baltimore. University Park, Maryland: 1974.

Scharf, J. Thomas. History of Baltimore City and County. Baltimore 1881.

Shivers, Natalie W. Those Old Placid Rows. Maclay & Associates: Baltimore 1981.

North Central Historic District B-1341
Name of Property

Baltimore (Independent City), Maryland
County and State

10. Geographical Data

Acreage of Property Approximately 38.5 acres

UTM References Baltimore East, MD Quad SEE CONTINUATION SHEET
(Place additional UTM references on a continuation sheet)

1	<table border="1"><tr><td> </td><td> </td></tr></table> Zone			<table border="1"><tr><td> </td><td> </td><td> </td><td> </td><td> </td><td> </td><td> </td><td> </td></tr></table> Easting									<table border="1"><tr><td> </td><td> </td><td> </td><td> </td><td> </td><td> </td><td> </td><td> </td></tr></table> Northing									3	<table border="1"><tr><td> </td><td> </td></tr></table> Zone			<table border="1"><tr><td> </td><td> </td><td> </td><td> </td><td> </td><td> </td><td> </td><td> </td></tr></table> Easting									<table border="1"><tr><td> </td><td> </td></tr></table> Northing		
2	<table border="1"><tr><td> </td><td> </td></tr></table> Zone			<table border="1"><tr><td> </td><td> </td><td> </td><td> </td><td> </td><td> </td><td> </td><td> </td></tr></table> Easting									<table border="1"><tr><td> </td><td> </td><td> </td><td> </td><td> </td><td> </td><td> </td><td> </td></tr></table> Northing									4	<table border="1"><tr><td> </td><td> </td></tr></table> Zone			<table border="1"><tr><td> </td><td> </td><td> </td><td> </td><td> </td><td> </td><td> </td><td> </td></tr></table> Easting									<table border="1"><tr><td> </td><td> </td></tr></table> Northing		

See continuation sheet

Verbal Boundary Description
(Describe the boundaries of the property on a continuation sheet)

Boundary Justification
(Explain why the boundaries were selected on a continuation sheet)

11. Form Prepared By

name/title Fred B. Shoken
Organization Preservation Consultant date January 29, 2002
street & number 1707 Park Avenue telephone (410) 669-5669
city or town Baltimore state Maryland zip code 21217

Additional Documentation Submit the following items with the completed form:

Continuation Sheets

Maps

- A **USGS map** (7.5 or 15 minute series) indicating the property's location.
- A **Sketch map** for historic districts and properties having large acreage or numerous resources.

Photographs

Representative **black and white photographs** of the property.

Additional Items (Check with the SHPO or FPO for any additional items)

Property Owner (Complete this item at the request of SHPO or FPO)

name More Than 50 Owners c/o Ms. Sandy Sparks, Midtown Community Benefits District
street & number 1221 North Calvert Street telephone (410) 528-1512
city or town Baltimore state Maryland zip code 21202

Paperwork Reduction Statement: This information is being collected for applications to the National Register of Historic Places to nominate properties for listing or determine eligibility for listing, to list properties, and to amend existing listings. Response to this request is required to obtain a benefit in accordance with the National Historic Preservation Act, as amended (16 U.S.C. 470 et. seq.).

Estimated Burden Statement: Public reporting burden for this form is estimated to average 18.1 hours per response including the time for reviewing instructions, gathering and maintaining data, and completing and reviewing the form. Direct comments regarding this burden estimate or any aspect of this form to the Chief, Administrative Services Division, National Park Service, P.O. Box 37127, Washington, DC 20013-7127; and the Office of Management and Budget, Paperwork Reductions Project (1024-0018), Washington, DC 20503.

United States Department of the Interior
National Park Service

National Register of Historic Places Continuation Sheet

North Central Historic District B-1341

Name of Property

Baltimore (Independent City), Maryland

County and State

Section 10 Page 1

GEOGRAPHICAL DATA

UTM References:

Baltimore East, MD quad

- A: 18-360310-4352430
- B: 18-361730-4352450
- C: 18-361730-4352450
- D: 18-361310-4351740
- E: 18-359510-4352070
- F: 18-360324-4352290

Verbal Boundary Description:

The North Central Historic District is roughly bounded by North Avenue, Greenmount Avenue and the Amtrak Railroad Right of Way.

Northern Boundary:

The district bounds on the western and northern building lines of 200 West North Avenue. Crossing Howard Street it borders 19 ½ Street directly north of the properties in the 100 block of West North Avenue. Crossing Maryland Avenue it bound on the northern property line of 18 West North Avenue and includes 1904-08 North Charles Street. Crossing Charles Street it bounds on the northern property line of 1901 St. Paul Street and 4-8 East North Avenue. It then bounds on the eastern property line of 10-22 East North Avenue to 20th Street and the northern and western property line that abuts the Old Goucher Historic District. From the eastern boundary of that property the district bounds on the center line of North Avenue to the intersection of Greenmount Avenue.

United States Department of the Interior
National Park Service

National Register of Historic Places Continuation Sheet

North Central Historic District B-1341

Name of Property

Baltimore (Independent City), Maryland

County and State

Section 10 Page 2

Eastern Boundary:

The district bounds on the center line of Greenmount Avenue to southern boundary of 1400-1410 Greenmount Avenue.

Southern and Western Boundary:

The district bounds on the southern property lines of 1400-1410 Greenmount Avenue, 1418 Belvidere Street, 325-417 East Oliver Street and Oliver Street. Crossing Guilford Avenue it bounds on the southern property line of 1510 Guilford Avenue and 1539 N. Calvert Street. Crossing Calvert Street it bounds on the alley south of 1600 North Calvert Street and the southern property line of 1601 St. Paul Street. Crossing St. Paul Street in bounds on the southern property line of 1 E. Lanvale Street. Crossing Charles Street it bounds on the center line of East Lanvale Street to Maryland Avenue. Crossing Maryland Avenue it bounds on the center line of Falls Road until it intersects with North Avenue. Crossing North Avenue to the western building line of 200 West North Avenue.

Boundary Justification:

The southern and western boundary is defined by the steep declivity of the Jones Falls Valley. This clear topographical boundary is reinforced by the location within the valley of the Jones Falls Expressway--a multi-lane interstate highway--and the Amtrak railroad tracks, which further separate the North Central Historic District from the neighborhood to the south.

The eastern boundary is defined by Greenmount Avenue. Directly across Greenmount Avenue for the entire length of the North Central Historic District is Greenmount Cemetery (listed in the National Register of Historic Places), a distinct change in land use.

The northern boundary takes in the properties on the south side of North Avenue from Saint Paul Street to Greenmount Avenue. The extensively-altered Board of Education Building

United States Department of the Interior
National Park Service

National Register of Historic Places Continuation Sheet

North Central Historic District B-1341

Name of Property

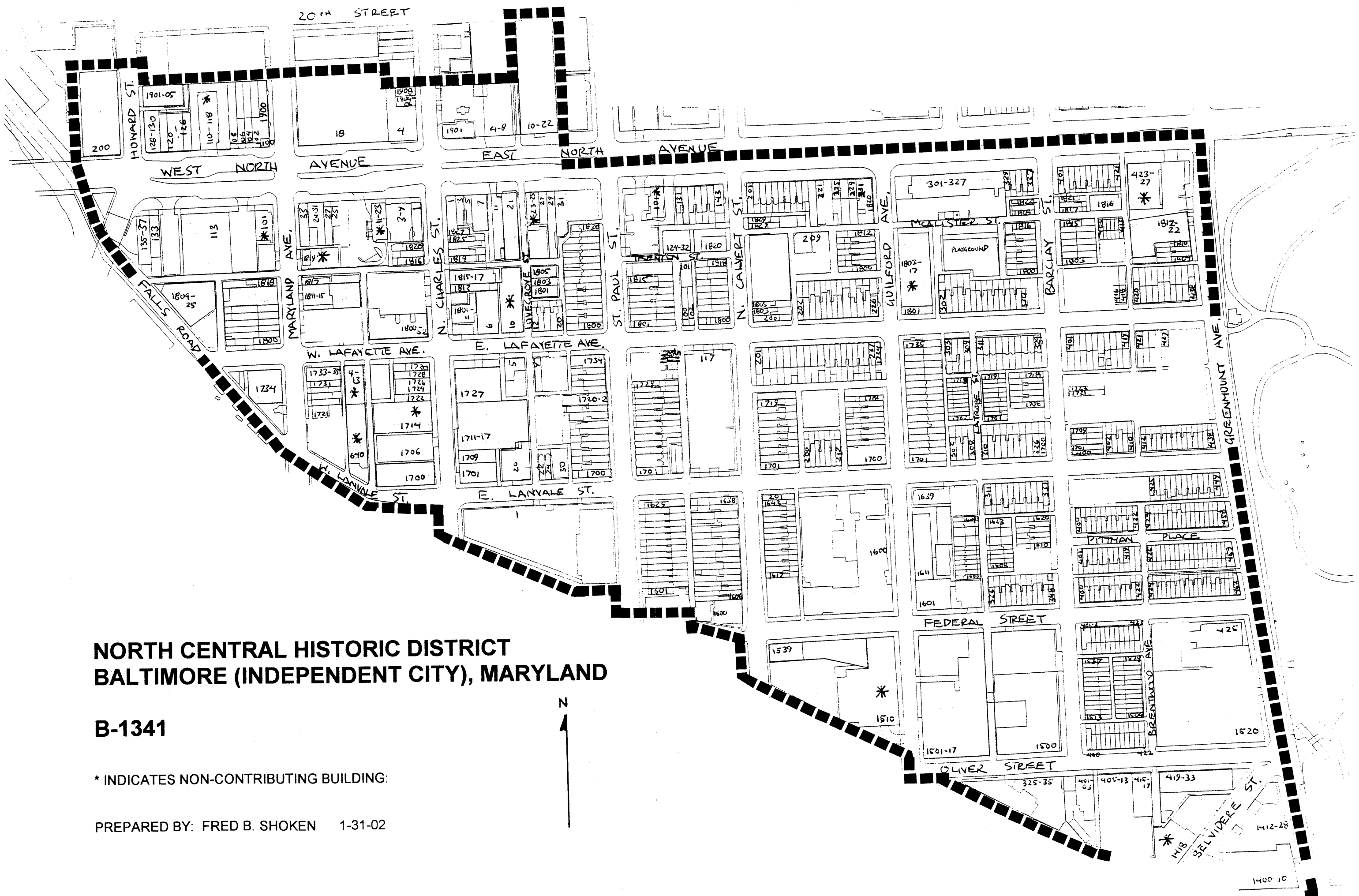
Baltimore (Independent City), Maryland

County and State

Section 10 Page 3

and parking lots take up the north side of North Avenue from Saint Paul Street to Guilford Avenue. Between Guilford Avenue and Greenmount Avenue there are many vacant lots on the north side of North Avenue.

The National Register-listed Old Goucher Historic District takes in both sides of St. Paul Street north of North Avenue. From the intersection of St. Paul Street and North Avenue to the west, the North Central District abuts the Old Goucher District, taking in the properties fronting North Avenue. These properties are directly related to the entertainment and business character of the district. The buildings at 1904-08 North Charles Street and 1901-05 Howard Street were included since they directly adjoin buildings in the district and are separated from buildings to the north. An alley and parking lot is located directly north of 1901-05 Howard Street and the properties in the 100 block West North Avenue. A narrow alley separates 1904-08 North Charles Street from the few remaining buildings on North Charles Street that were excluded from the Old Goucher Historic District.



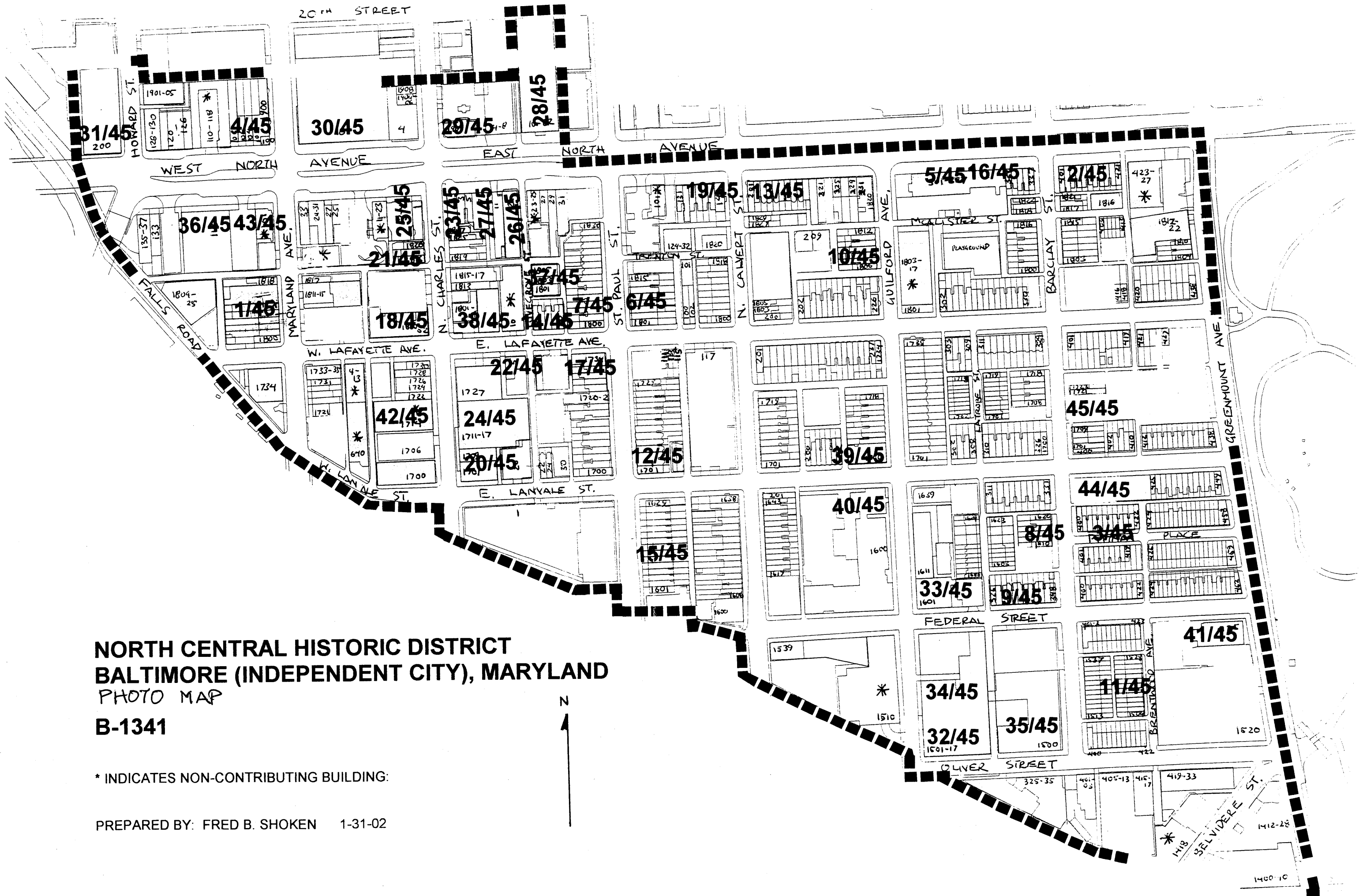
**NORTH CENTRAL HISTORIC DISTRICT
BALTIMORE (INDEPENDENT CITY), MARYLAND**

B-1341

* INDICATES NON-CONTRIBUTING BUILDING:

PREPARED BY: FRED B. SHOKEN 1-31-02





**NORTH CENTRAL HISTORIC DISTRICT
BALTIMORE (INDEPENDENT CITY), MARYLAND
PHOTO MAP**

B-1341

* INDICATES NON-CONTRIBUTING BUILDING:

PREPARED BY: FRED B. SHOKEN 1-31-02