



Engine House

~~(V.I. Natl. Park Muff. Res. Area)~~ (VI Natl. Park Muff. Res. Area)

Historic Name: Reef Bay Plantation

Common Name: Reef Bay Factory

Reef Bay Quarter, St. John, Virgin Islands.

Photo credit F. C. Gjessing Date of photo 6/26/78

Negative filed at Virgin Islands National Park

West and north elevation of engine house of factory
(H-13, 1) mill round and cane crushers to the right
(H-13, 1).



Factory

Historic Name: Reef Bay Plantation

Common Name: Reef Bay Factory

Reef Bay Quarter, St. John, Virgin Islands

(VI Natl. Park Mult. Res. Area)

Photo credit F. C. Gjessing Date of photo 6/26/78

Negative filed at Virgin Islands National Park

Storage wing (Left) and firing trench (right) of factory

(HQ13, 2) viewed from the west.

JUL 23 1981

JUN 8 1981

2 of 11



Factory

Historic Name: Reef Bay Plantation

Common Name: Reef Bay Factory

Reef Bay Quarter, St. John, Virgin Islands

(VI Natl. Park Multiple Resource Area)

Photo credit F. C. Gjessing Date of photo 6/26/78

Negative filed at Virgin Islands National Park

Curing and storage wing of factory viewed from the northeast, still in foreground (H013, 2).



Factory

Historic Name: Reef Bay Plantation

Common Name: Reef Bay Factory

Reef Bay Quarter, St. John, Virgin Islands

(VI Natl. Park Multiple Resource Area)

Photo credit F. C. Gjessing Date of photo 6/26/78

Negative filed at Virgin Islands National Park

Factory building viewed from the southeast, curing house to the right and boiling house to the left (H-12, 2).



Horsemill and Factory

Historic Name: Reef Bay Plantation

Common Name: Reef Bay Factory

Reef Bay Quarter, St. John, Virgin Islands

(VI Natl. Park Multiple Resource Area)

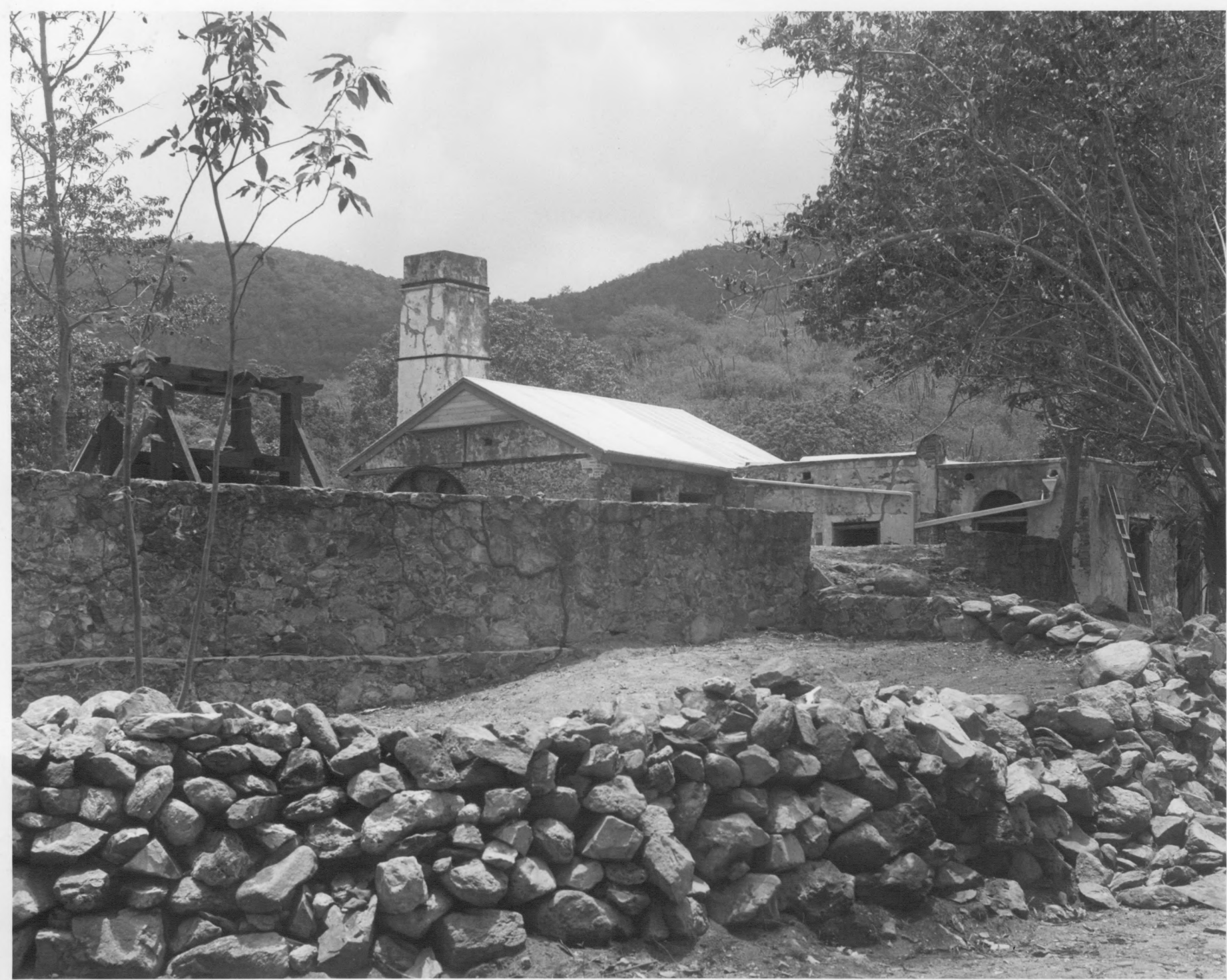
Photo credit F. C. Gjessing Date of photo 6/26/78

Negative filed at Virgin Islands National Park

Horsemill, H-13, 1 (Left) and factory building (H-13, 2)

viewed from the southeast. 1860's engine house in center of view with boiling house to the right.

JUN 8 1981 JUL 23 1981 5 of 11



Horsemill

Historic name: Reef Bay Plantation

Common Name: Reef Bay Factory

Reef Bay Quarter, St. John, Virgin Islands

Photo credit F. C. Gjessing Date of photo 6/26/78

Negative filed at Virgin Islands National Park

Horsemill (H-13, 1) with remains of oxpound wall
(H-13, 7) in the foreground viewed from the south-
southeast. Factory building in background (H-13, 2).

JUN 8 1981 JUL 23 1981 60411



Factory

Historic Name: Reef Bay Plantation

Common Name: Reef Bay Factory

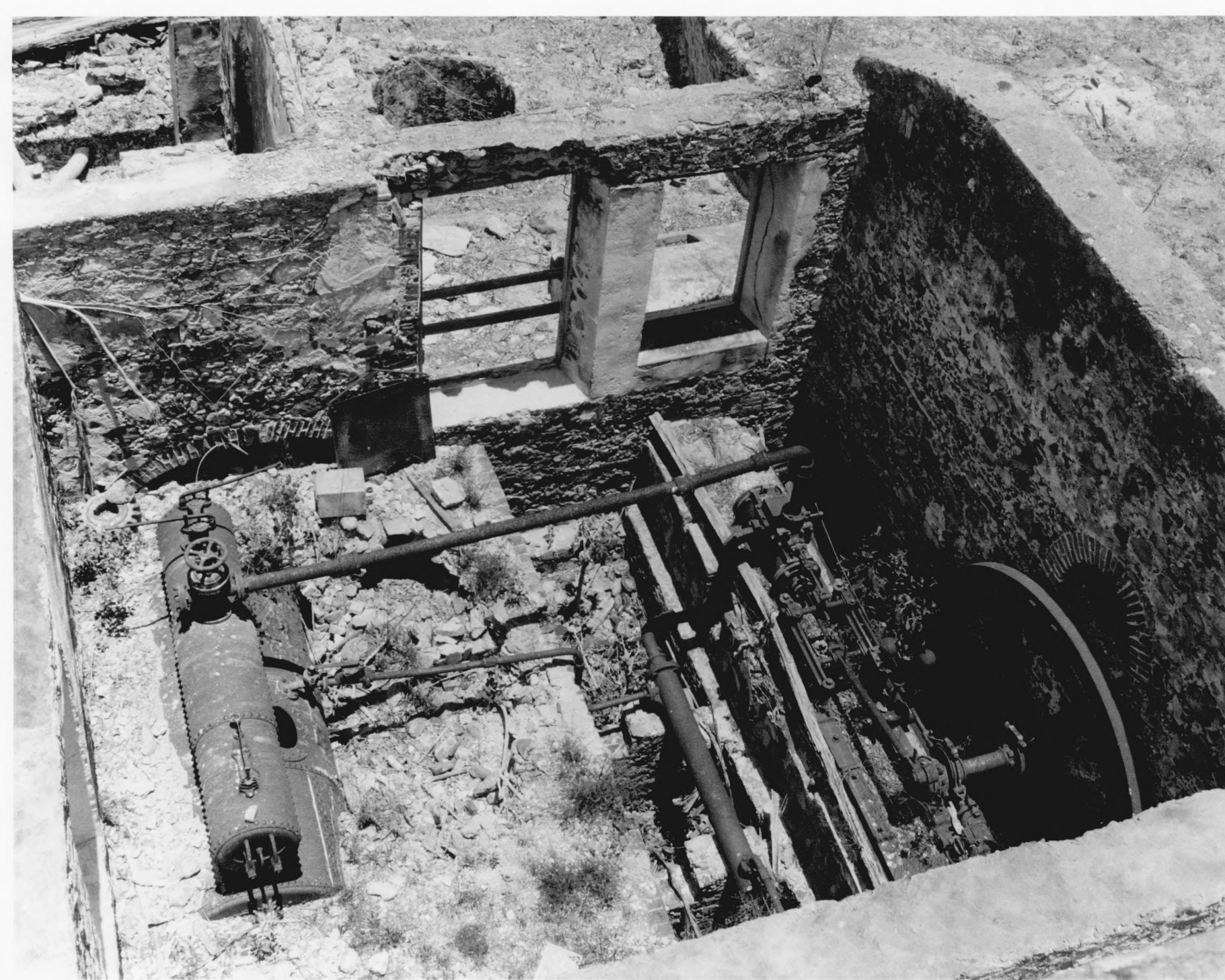
Reef Bay Quarter, St. John, Virgin Islands

(US Nat. Park Multiple Resource Area)

Photo credit F. C. Gjessing **Date of photo** July, 1970

Negative filed at Virgin Islands National Park

Interior of boiling house of factory (H-13, 2) viewed from the south, prior to reroofing.



Steam Engine Room

Historic Name: Reef Bay Plantation

Common Name: Reef Bay Factory

Reef Bay Quarters, St. John, Virgin Islands

(VF Natl. Park Mult. Res. Area)

Photo credit F. C. Gjessing Date of photo July, 1970

Negative filed at Virgin Islands National Park

View of steam engine room of factory (H-13, 2) from
top of stack prior to reroofing and cleaning of debris.



Dwelling No. 2

Historic Name: Reef Bay Plantation

Common Name: Reef Bay Factory

Reef Bay Quarter, St. John, Virgin Islands

(VI Natl. Park Multiple Res. Area)

Photo credit F. C. Gjessing date of photo April, 1976

Negative filed at Virgin Islands National Park

Dwelling No. 2 h-13, 4 viewed from the southwest.



Bake Oven

Historic Name: Reef Bay Plantation

Common Name: Reef Bay Factory

Reef Bay Quarter, St. John, Virgin Islands

(VI Natl. Park Mult. Res. Area)

Photo credit F. C. Gjessing date of photo April, 1976

Negative filed at Virgin Islands National Park

Bake Oven H-13, 6 viewed from the south.



Grave

Historic Name: Reef Bay Plantation

Common Name: Reef Bay Factory

Reef Bay Quarter, St. John, Virgin Islands

(VI Nat'l. Park Mult. Res. Area)

Photo credit F. C. Gjessing date of photo April, 1976

negative filed at Virgin Islands National Park

Grave of William Marsh viewed from the north (H-13, 8).