



Manitou Springs Multiple Resource Area (7)  
El Paso County, Colorado

Elaine Freed  
868 Oxford Lane, Colorado Springs, Colo.  
May 1980

Manitou Springs Historic District  
Looking east. Overview of southern  
section from 1872 Shelf Rd. on Serpentine  
Drive near Fountain Creek & Hwy. 24

Overview of southern section taken from  
the 1872 Shelf Road on Serpentine Drive  
near Fountain Creek and Highway # 24

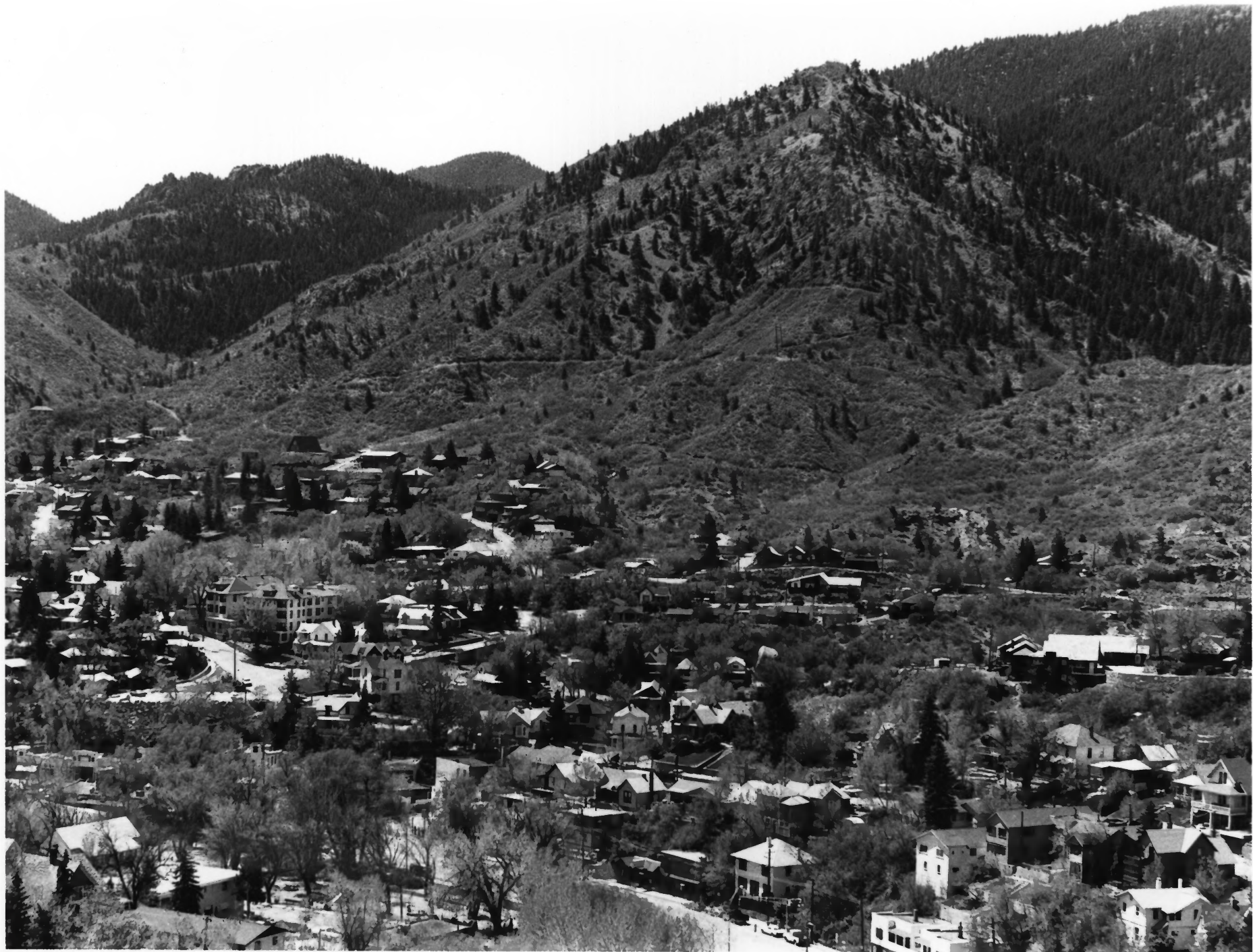
M.S., CO

Photos: Elaine Freed, May, 1980

R. 4, Fr. 7

Facade \_\_\_ Direction: E

MANITOU SPRINGS, COLORADO



Manitou Springs Multiple Resource Area (2)  
El Paso County, Colorado

Elaine Freed  
868 Oxford Lane, Colo. Springs, Colo  
May 1980

Manitou Springs Historic District  
View showing south half of town and  
Red Mountain.

Overview and natural feature: south half of  
town and Red Mountain  
M.S., CO  
Photos: Elaine Freed, May, 1980  
R. 4, Fr. 14  
Facade: (of Red Mountain) N Direction SE

MANITOU SPRINGS, COLORADO



MADAWAY

MADAWAY

SHOP

SYGASTY

PIKE PEAK TRADING POST

BANK OF THE ROCKIES

STOP

STOP

1977

Manitou Springs Multiple Resource Area (3)  
El Paso County, Colorado

Elaine Freed  
868 Oxford Lane, Colo. Springs, Colo.  
May 1980

Manitou Springs Historic District

View showing 700-800 block of Manitou Ave.  
Looking west.

Street scene: commercial  
Manitou Avenue, 700-800 Block  
M.S., CO 80829 Site # \_\_\_\_\_  
Photos: Elaine Freed, May 1980  
R. 3, Fr. 15  
Facade: N Direction: W

MANITOU SPRINGS, COLORADO



LEDDY  
DUNCK  
1891

TEXAS  
CRAFT  
TEXAS

RENT  
885-5457

"AN OFFER  
YOU CAN'T  
REFUSE..."

Godfather  
PIZZA

732

REAL ESTATE

Manitou Springs Multiple Resource Area  
El Paso County, Colorado

4

Elaine Freed  
868 Oxford Lane, Colo. Springs, Colo  
May 1980

Manitou Springs Historic District  
Leddy Building, 734-738 Manitou Ave.  
Looking northwest.

4

Representative structure: commercial  
Leddy Building  
734-8 Manitou Ave. Site # 128  
M.S., CO 80829  
Photos: Elaine Freed, May, 1980  
R. 1, Fr. 19  
Facade: S Direction NW

MANITOU SPRINGS, COLORADO





MANITOU CLEANERS

THE ANTIQUE EMPORIUM

*Manitou*  
CLEANERS

LAUNDRY-TAILORING

CLOSED

717

719

720



Manitou Springs Multiple Resource Area (5)  
El Paso County, Colorado

Elaine Freed  
868 Oxford Lane, Colo. Springs, Colo.  
May 1980

Manitou Springs Historic District  
Wheeler Bank, 717 Manitou Ave.  
North facade. Looking south.

Special structure: commercial  
Wheeler Bank  
717 Manitou Ave. Site # 466  
M.S., CO 80829  
Photos: Elaine Freed, May, 1980  
R. 2, Fr. 10  
Facade: N Direction: S

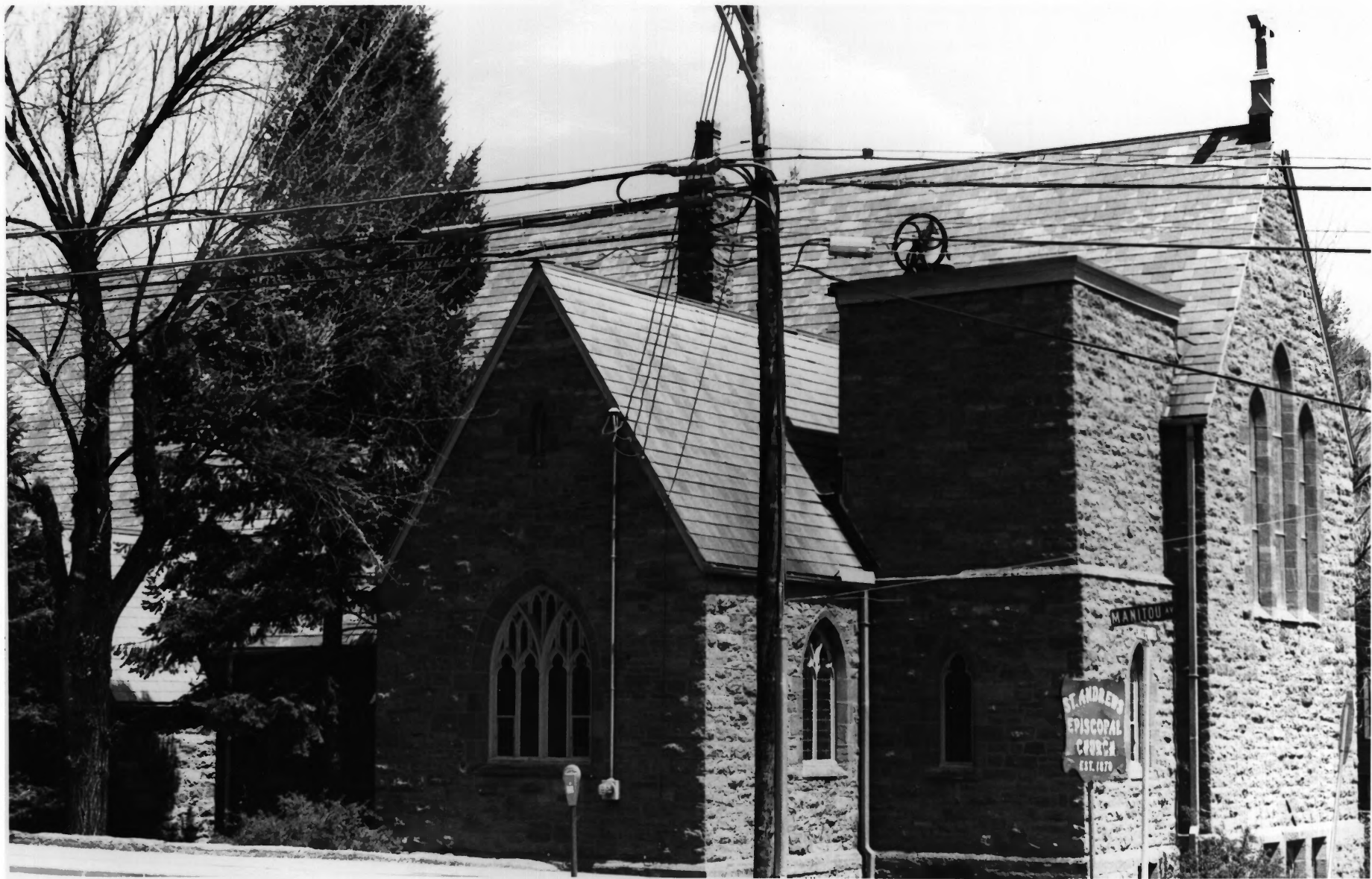
MANITOU SPRINGS, COLORADO



Manitou Springs Multiple Resource Area  
El Paso County, Colorado

Elaine Freed  
868 Oxford Lane, Colo. Springs, Colo.  
May 1980

Manitou Springs Historic District  
Barker House 819 Manitou Avenue.  
Looking west.



ST. ANDREW'S  
EPISCOPAL  
CHURCH  
EST. 1870

MANITOU

Manitou Springs Multiple Resource Area <sup>⑦</sup>  
El Paso County, Colorado

Elaine Freed

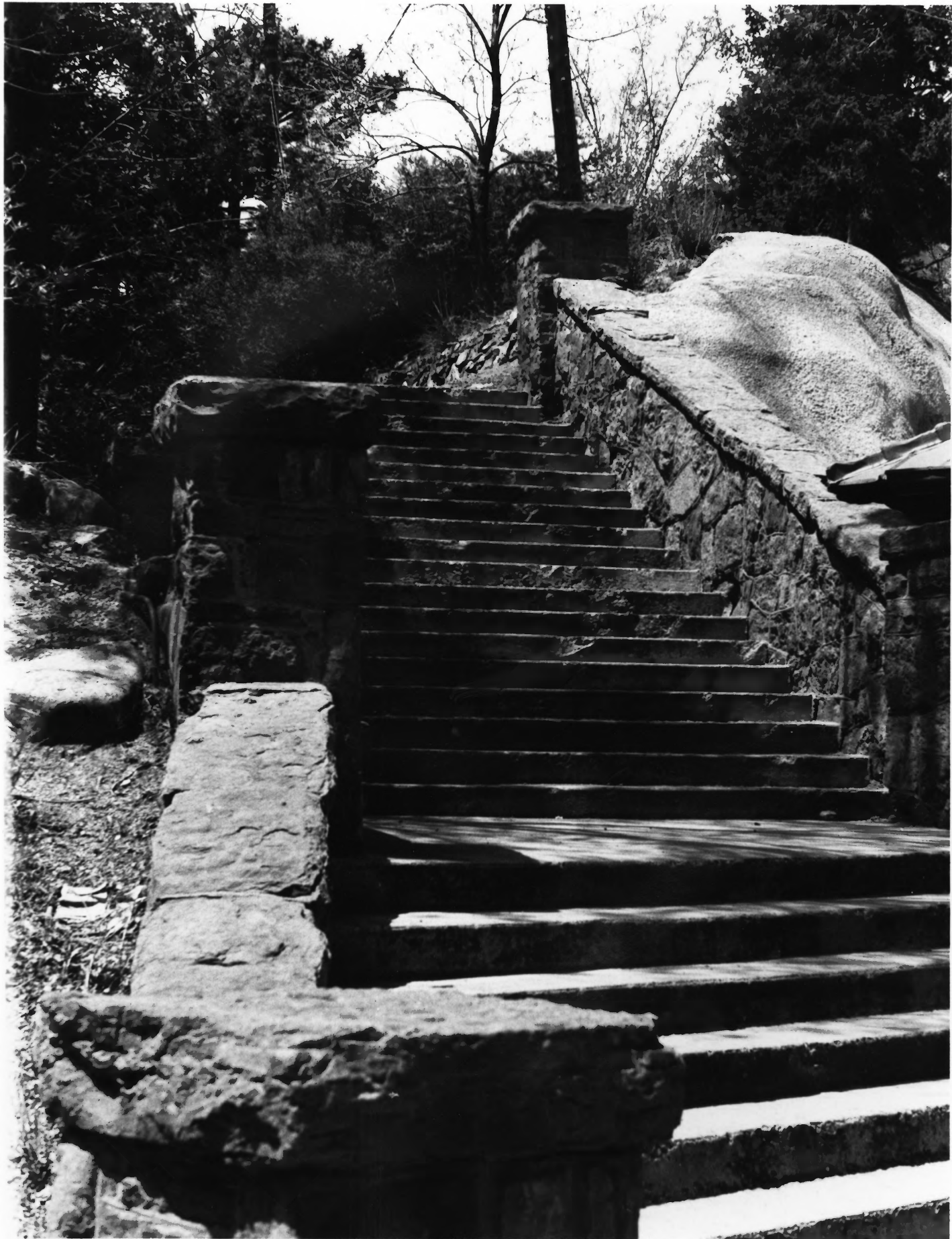
868 Oxford Lane, Colo. Springs, Colo.

May 1980

Manitou Springs Historic District

St. Andrews Church

808 Manitou Avenue



Manitou Springs Multiple Resource Area (8)  
El Paso County, Colorado

Elaine Freed

868 Oxford Lane, Colo. Springs, Colo.

May 1980

Manitou Springs Historic District

Public stairway, Manitou Place

900 block, Manitou Ave.

Looking southwest.

Feature: stonework

Public stairway, Manitou Place

900 Blk, Manitou Ave.

Site #631A

M.S., CO 80829

Photos: Elaine Freed, May, 1980

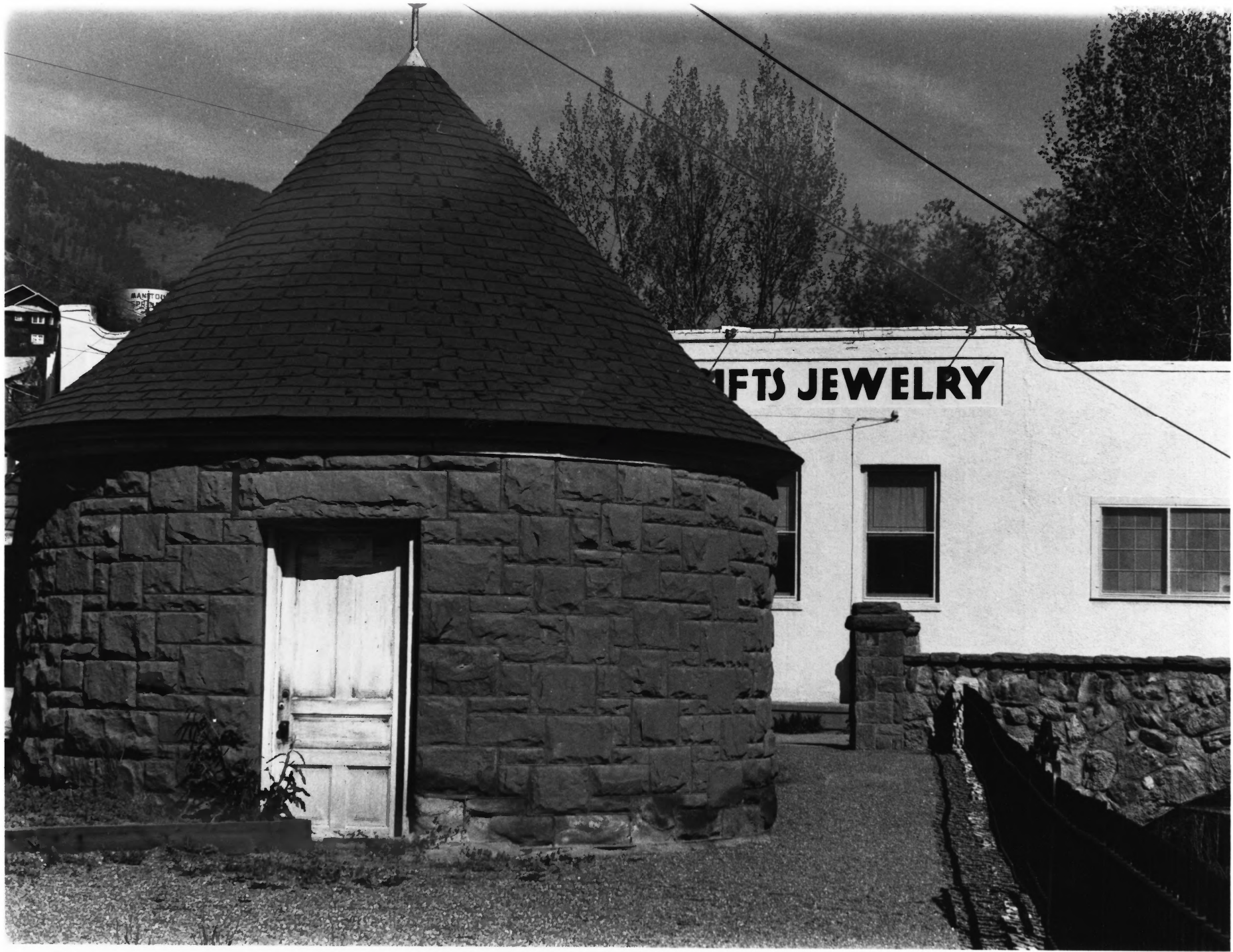
R. 1, Fr. 21

Facade: N

Direction: SW

MANITOU SPRINGS, COLORADO





**GIFTS JEWELRY**

Manitou Springs Multiple Resource Area  
El Paso County, Colorado

⑨

Elaine Freed  
868 Oxford Lane, Colo. Springs, Colo.  
May 1980

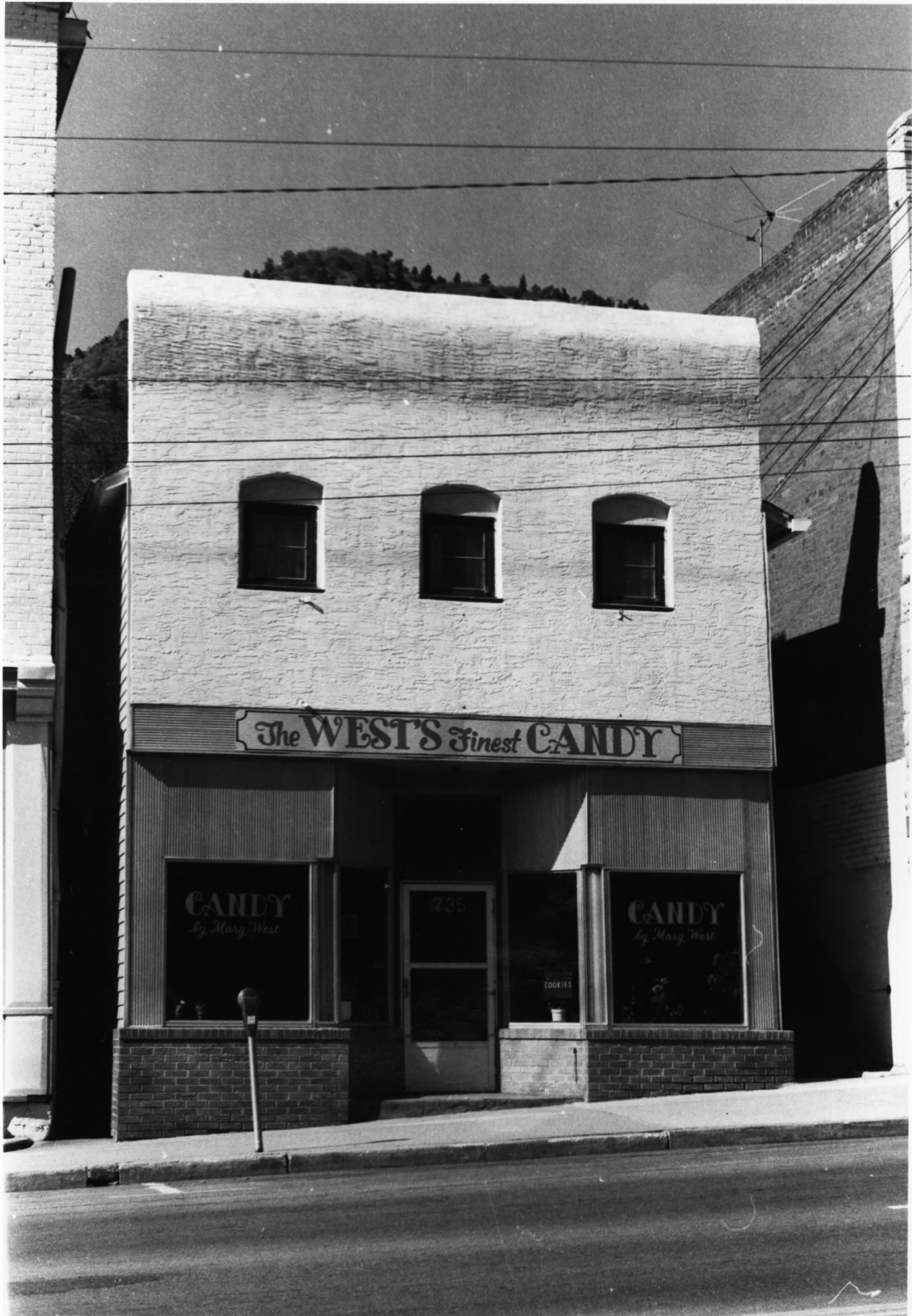
Manitou Springs Historic District

Cheyenne Spring House

934 Manitou Avenue. East facade.  
Looking west

Feature: spring  
Cheyenne Spring House                      Site # 146  
934 Manitou Avenue  
M.S., CO 80829  
Photos: Elaine Freed, May, 1980  
R. 2, Fr. 32  
Facade: E                                      Direction: W

MANITOU SPRINGS, COLORADO



The WEST'S Finest CANDY

CANDY  
by Mary West

735

COOKIES

CANDY  
by Mary West

Manitou Springs Multiple Resource Area  
El Paso County, Colorado

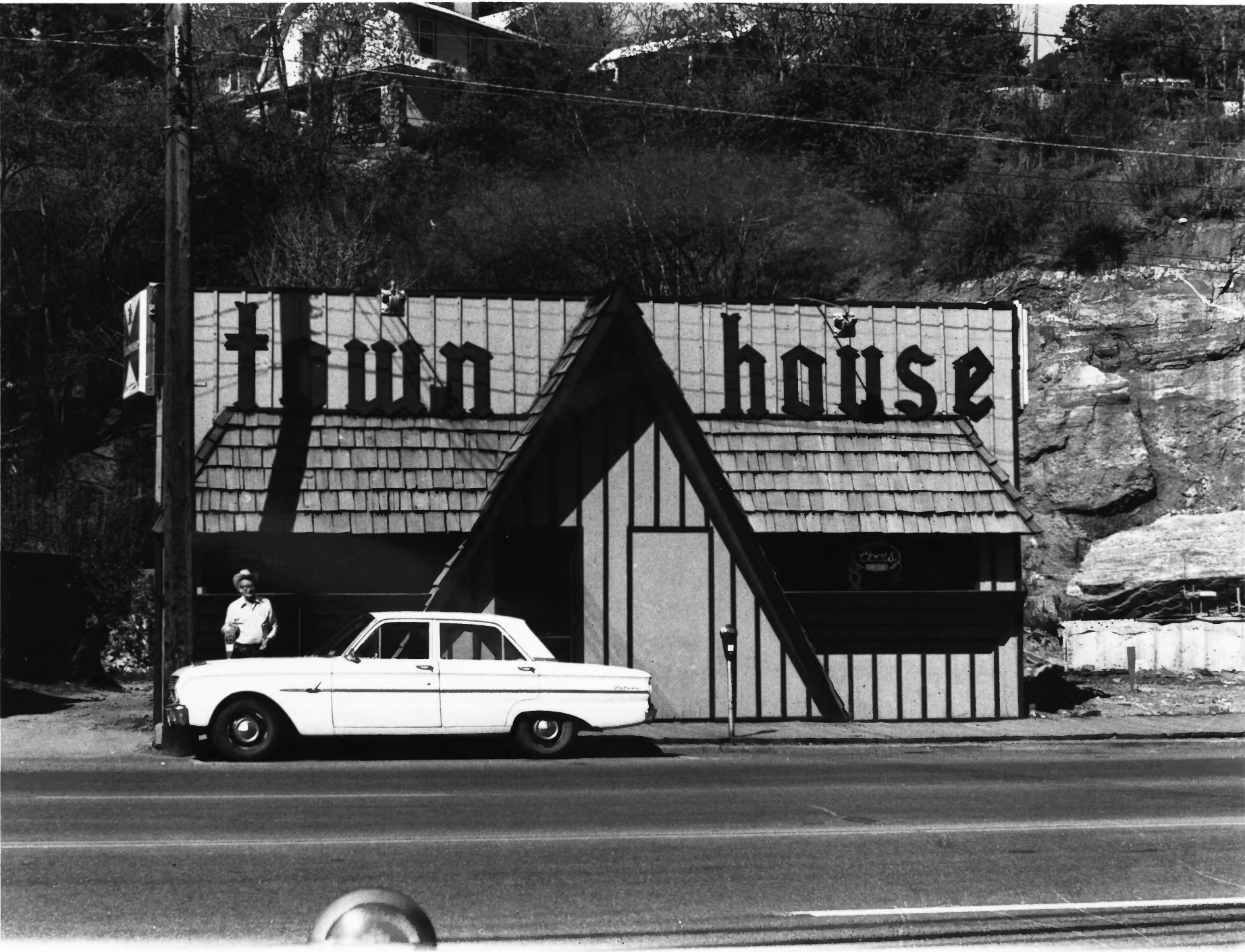
10

Elaine Freed

868 Oxford Lane, Colo. Springs, Colo.

May 1980

Manitou Springs Historic District  
Intrusion. 735 Manitou Avenue.



twin house



Manitou Springs Multiple Resource Area (11)  
El Paso County, Colorado

Elaine Freed  
868 Oxford Lane, Colo. Spring, Colo.  
May 1980

Town House Restaurant. Intrusion.  
909 Manitou Avenue. North facade.

Intrusion: commercial  
Town House Restaurant  
909 Manitou Ave.  
M.S., CO 80829

Photos: Elaine Freed, May, 1980  
R. 3, Fr. 19

Facade: N

Direction: S

Site # 627

MANITOU SPRINGS, COLORADO

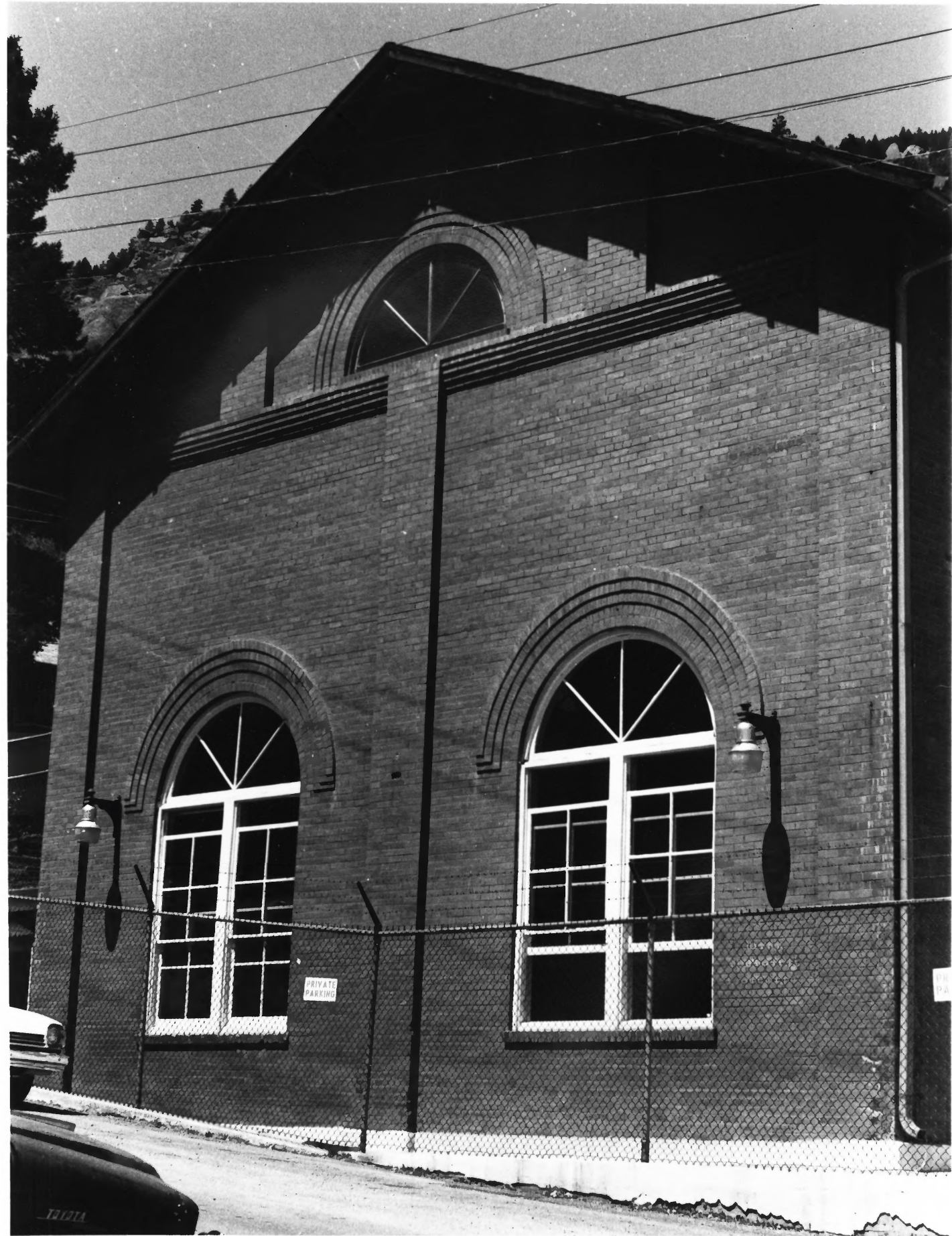


Manitou Springs Multiple Resource Area  
El Paso County, Colorado

Elaine Freed  
368 Oxford Lane, Colo. Springs, Colo.  
May 1980

Manitou Springs Historic District  
Miramont Castle.  
Castle Hill





PRIVATE  
PARKING

PR  
PA

FIAT

Manitou Springs Multiple Resource Area  
El Paso County, Colo.

13

Elaine Freed  
868 Oxford Lane, Colo. Springs, Colo.  
May 1980

Manitou Springs (Historic District  
Hydro-Electric Plan  
Ruxton Avenue. East facade.

Special structure: institutional  
Hydro-Electric Plant  
Ruxton Avenue Site # 772  
M.S., CO 80829  
Photos: Elaine Freed, May, 1980  
R. 3, Fr. 5  
Facade: E Direction: W

MANITOU SPRINGS, COLORADO



DEAD  
END

GRAND AV

Manitou Springs Multiple Resource Area  
El Paso County, Colorado

Elaine Freed  
868 Oxford Lande, Colo. Springs, Colo.  
May 1980

Manitou Springs Historic District

Johnny Nolan House  
2 Grand Avenue. South facade.

Special structure: residence  
Johnny Nolan House  
2 Grand Avenue Site # 237  
M.S., CO 80829  
Photos: Elaine Freed, May, 1980  
R. 1, Fr. 23  
Facade: S Direction: N



Manitou Springs Multiple Resource Area (15)  
El Paso County, Colorado

Elaine Freed

868 Oxford Lane, Colo. Springs, Colo

May 1980

Manitou Springs Historic District

Cliff House Hotel

306 Canon Ave. South facade. Looking  
northeast.

Special structure: commercial

CLIFF HOUSE HOTEL

306 Canon Ave.

Site # 96

M.S., CO 80829

Photos: Elaine Freed, May, 1980

R. 1, Fr. 13

Facade: S Direction: NE



Manitou Springs Multiple Resource Area (16)  
El Paso County, Colorado

Elaine Freed  
868 Oxford Lane, Colo. Springs, Colo.  
May 1980

Manitou Springs Historic District  
131 Washington. South facade.

Feature: stonework - walls, garage, house  
foundation and piers

131 Washington

M.S., CO 80829

Site # 56

Photos: Elaine Freed, May, 1980

R. 1, Fr. 10

Facade: S

Direction: W

MANITOU SPRINGS, COLORADO





Manitou Springs Multiple Resource Area (17)  
El Paso County, Colorado

Elaine Freed  
868 Oxford Lane, Colo. Springs, Colo  
May 1980

Manitou Springs Historic District

859 Prospect. East facade.

Representative structure: residential,  
Victorian frame vernacular

859 Prospect

M. S., CO 80829 Site # 497

Photos: Elaine Freed, May, 1980

R. 2, Fr. 23

Facade: E Direction: W

MANTIOU SPRINGS, COLORADO



Manitou Springs Multiple Resource Area  
El Paso County, Colorado

Elaine Freed  
868 Oxford Lane, Colo. Springs, Colo.  
May 1980

Manitou Springs Historic District  
319 Oklahoma. Southwest facade.  
Looking northeast.

Representative structure: residential  
Summer Cottage  
319 Oklahoma Site # 288  
M.S., CO 80829  
Photos: Elaine Freed, May, 1980  
R. 2, Fr. 1  
Facade: SW Direction: NE



Intrusion: residential - house  
10 Grand Ave. Site # 238  
M.S., CO 80829  
Photos: Elaine Freed, May, 1980  
R. 3, Fr. 28  
Facade: S Direction: NW

MANITOU SPRINGS, COLORADO



Manitou Springs Multiple Resource Area  
El Paso County, Colorado

Elaine Freed  
868 Oxford Lane, Colo. Springs, Colo.  
May 1980

Manitou Springs Historic District  
Gillis Brothers House  
106 Ruxton. Southeast facade.

Special structure: residence  
Gillis Brothers Home  
106 Ruxton Site # 700  
M.S., CO 80829  
Photos: Elaine Freed, May, 1980  
R 2, Fr. 34  
Facade: SE Direction: NW





Manitou Springs Historic District  
El Paso County, Colorado

Bill Koerner

Negatives: CPO 1983

Photo #21

25 Washington



Manitou Springs Historic District  
El Paso County, Colorado

Bill Koerner

Negatives: CPO 1983

Photo 22

119 Deer Path



Manitou Springs Historic District  
El Paso County, Colorado

Bill Koerner

Negatives: CPO 1983

112 Deer Path Photo #23



Manitou Springs Historic District  
El Paso County, Colorado

Bill Koerner

Negatives: CPO 1983

Photo #24 33 Washington





Manitou Springs Historic District  
El Paso County, Colorado

Bill Koerner

Negatives: CPO 1983

Photo #25

106 Navajo



Manitou Springs Historic District  
El Paso County, Colorado

Bill Koerner

Negatives: CPO 1983

Photo 26

806 Midland



Manitou Springs Historic District  
El Paso County, Colorado

Bill Koerner:

Negatives: CPO 1983

Photo #27 809 Midland



Manitou Springs Historic District  
El Paso County, Colorado

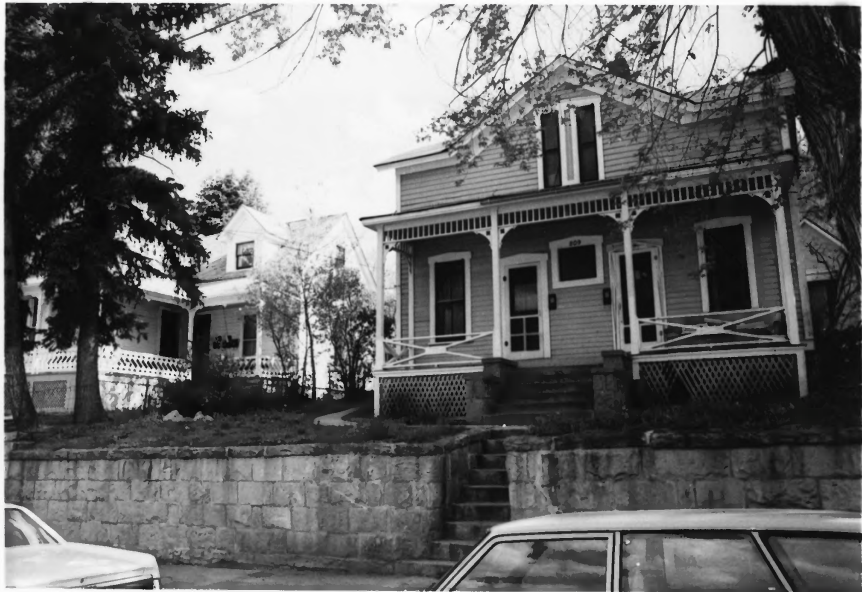
Bill Koerner

Negatives: CPO 1983

Photo 28

813 Duclo





Manitou Springs Historic District  
El Paso County, Colorado

Bill Koerner

Negatives: CPO 1983

Photo 29  
809 Duclo



REST-A-WHILE.

731

Manitou Springs Historic District  
El Paso County, Colorado

Bill Koerner

Negatives: CPO 1983

Photo 30

731 Duclo



Manitou Springs Historic District  
El Paso County, Colorado

Bill Koerner

Negatives: CPO 1983

Photo 31

719 Duclo



Manitou Springs Historic District  
El Paso County, Colorado

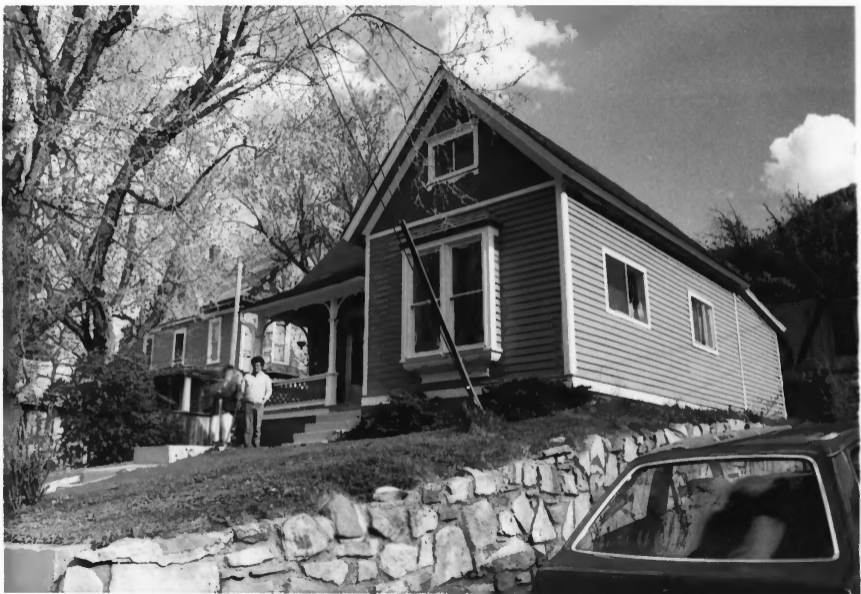
Bill Koerner

Negatives: CPO 1983

Photo 32

442 Winter





Manitou Springs Historic District  
El Paso County, Colorado

Bill Koerner

Negatives: CPO 1983

Photo 33

137 Ruxton



Manitou Springs Historic District  
El Paso County, Colorado

Bill Koerner

Negatives: CPO 1983

Photo 34 135 Ruxton



Manitou Springs Historic District  
El Paso County, Colorado

Bill Koerner

Negatives: CPO 1983

Photo 35

151 Ruxton



215

Manitou Springs Historic District  
El Paso County, Colorado

Bill Koerner

Negatives: CPO 1983

Photo 36

215 Ruxton





Manitou Springs Historic District  
El Paso County, Colorado

Bill Koerner

Negatives: CPO 1983

Photo 37

5 & 7 Elk Path



Manitou Springs Historic District  
El Paso County, Colorado

Bill Koerner

Negatives: CPO 1983

Photo 38

107 Duncan



Manitou Springs Historic District  
El Paso County, Colorado

Bill Koerner

Negatives: CPO 1983

Photo 39

113 Deer Path



Manitou Springs Historic District  
El Paso County, Colorado

Bill Koerner

Negatives: CPO 1983

Photo 40

935 Osage (Summit Ministries--old Grand  
View Hotel .





Manitou Springs Historic District

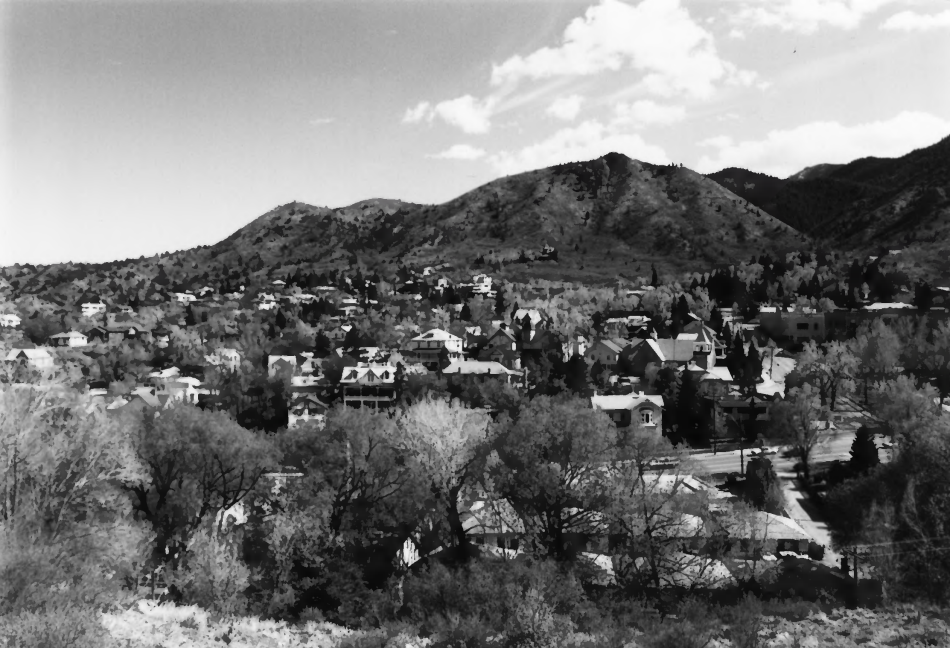
El Paso County, Colorado

Bill Koerner

Negatives: CPO 1983

Photo 41

Looking north toward Minnehaha from Pine  
Ridge



Manitou Springs Historic District  
El Paso County, Colorado

Bill Koerner

Negatives: CPO 1983

Photo 42

Looking SE. from Washington toward Iron  
Mountain showing Redstone Castle



Manitou Springs Historic District  
El Paso County, Colorado

Bill Koerner

Negatives: CPO 1983

Photo 43

Looking SW from Washington toward Red  
Mountain



Manitou Springs Historic District  
El Paso County, Colorado

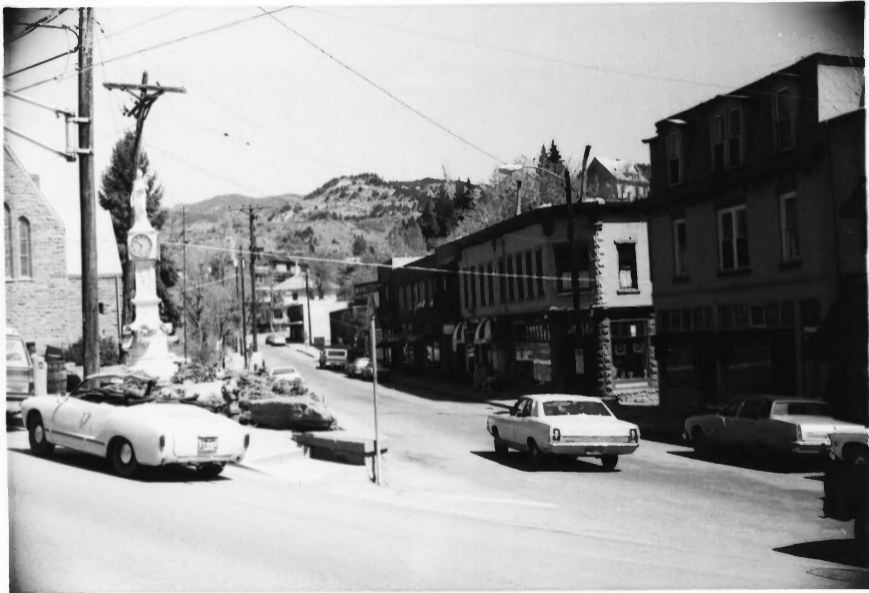
Bill Koerner

Negatives: CPO 1983

Photo 44

Looking east from 132 Ruxton





Manitou Springs Historic District  
El Paso County, Colorado

Bill Koerner

Negatives: CPO 1983

Photo 45

Looking NW on Canon Showing Wheeler Clock



Manitou Springs Historic District  
El Paso County, Colorado

Elaine Freed

Negatives: CPO 1980

Street Scene, Canon

# 46



Manitou Springs Historic District  
El Paso County, Colorado

Elaine Freed

CPO : Negatives            1980

Photo 47

Sunnyside Hotel    601 High Street



Manitou Springs Historic District  
El Paso County, Colorado

Elaine Freed

Negatives: CPO 1980

Photo 48

110 Capital Hill





Manitou Springs Historic District  
El Paso County, Colorado

Elaine Freed

Negatives: CPO 1980

Photo 49

121 Cave



Manitou Springs Historic District  
El Paso County, Colorado

Elaine Freed

Negatives: CPO 1980

Photo 50

Redstone Castle off of Southside Road



SHOP

LINENS

WORTH PALE?!

THE MOUNTAIN MAN

E. J. HAR  
LINEN

Manitou Springs Historic District  
El Paso County, Colorado

Elaine Freed

Negatives: CPO 1980

Street Scene 900 Manitou

# 51



SPED 25  
MOUNTAIN CASTLE  
MANITOU AV  
MANITOU INCLINE

PERD... OTRA VEZ  
HA

MANITOU  
SP...  
COG RAILWAY

TO THE TOP OF COLORADO  
PIKES PEAK  
COG RAILWAY  
MT. MANITOU  
INCLINE  
TRIPS DAILY MAY THROUGH OCTOBER

N  
OPEN

THE MOUNT...

"WHERE MUZZLELOADS"

MANITOU

MANITOU

Manitou Springs Historic District  
El Paso County, Colorado

Elaine Freed

Negatives: CPO 1980

Photo 52

Looking up Ruxton from the junction of Manitou  
Avenue and Ruxton Avenue





Manitou Springs Historic District  
El Paso County, Colorado

Elaine Freed

Negatives: CPO 1980

Photo 53

Public stairway from Capitol Hill to Iron  
Road.



Manitou Springs Historic District  
El Paso County, Colorado

Elaine Freed

Negatives: CPO 1980

Photo 54 218 Ruxton Avenue--Catholic Church  
built by Gillis Brothers



ONE  
WAY  
←

Manitou Springs Historic District  
El Paso County, Colorado

Bill Koerner

Negatives: CPO 1983

Photo 55  
923 Osage