

RECEIVED

1544

United States Department of the Interior
National Park Service

DEC 16 1993

NATIONAL
REGISTER

National Register of Historic Places
Registration Form

This form is for use in nominating or requesting determinations for individual properties and districts. See instructions in *How to Complete the National Register of Historic Places Registration Form* (National Register Bulletin 16A). Complete each item by marking "x" in the appropriate box or by entering the information requested. If an item does not apply to the property being documented, enter "N/A" for "not applicable." For functions, architectural classification, materials, and areas of significance, enter only categories and subcategories from the instructions. Place additional entries and narrative items on continuation sheets (NPS Form 10-900a). Use a typewriter, word processor, or computer, to complete all items.

1. Name of Property

historic name White, W.T.S., House and Carriage House

other names/site number _____

2. Location

street & number 400 North 16th. Street not for publication

city or town Clarinda vicinity

state Iowa code IA county Page code 145 zip code 51632

3. State/Federal Agency Certification

As the designated authority under the National Historic Preservation Act, as amended, I hereby certify that this nomination request for determination of eligibility meets the documentation standards for registering properties in the National Register of Historic Places and meets the procedural and professional requirements set forth in 36 CFR Part 60. In my opinion, the property meets does not meet the National Register criteria. I recommend that this property be considered significant nationally statewide locally. (See continuation sheet for additional comments.)

David C. ... 12/9/93
Signature of certifying official/Title Date

State Historical Society of Iowa
State of Federal agency and bureau

In my opinion, the property meets does not meet the National Register criteria. (See continuation sheet for additional comments.)

Signature of certifying official/Title Date

State or Federal agency and bureau

4. National Park Service Certification

I hereby certify that the property is:

- entered in the National Register. See continuation sheet.
- determined eligible for the National Register. See continuation sheet.
- determined not eligible for the National Register.
- removed from the National Register.
- other, (explain:) _____

Entered in the
Signature of the Keeper Gregory Rapsley National Register Date of Action 1/21/94

5. Classification

Ownership of Property
(Check as many boxes as apply)

- private
- public-local
- public-State
- public-Federal

Category of Property
(Check only one box)

- building(s)
- district
- site
- structure
- object

Number of Resources within Property
(Do not include previously listed resources in the count.)

Contributing	Noncontributing	
2	0	buildings
0	0	sites
0	1	structures
0	0	objects
2	1	Total

Name of related multiple property listing
(Enter "N/A" if property is not part of a multiple property listing.)

N/A

Number of contributing resources previously listed
in the National Register

0

6. Function or Use

Historic Functions
(Enter categories from instructions)

DOMESTIC/SINGLE DWELLING

DOMESTIC/SECONDARY STRUCTURE

Current Functions
(Enter categories from instructions)

DOMESTIC/SINGLE DWELLING

DOMESTIC/SECONDARY STRUCTURE

7. Description

Architectural Classification
(Enter categories from instructions)

Late 19th. and 20th. Century Revivals

Other: Colonial Revival

Materials
(Enter categories from instructions)

foundation BRICK

walls WOOD

roof ASPHALT

other

Narrative Description

(Describe the historic and current condition of the property on one or more continuation sheets.)

8. Statement of Significance

Applicable National Register Criteria

(Mark "x" in one or more boxes for the criteria qualifying the property for National Register listing.)

- A Property is associated with events that have made a significant contribution to the broad patterns of our history.
- B Property is associated with the lives of persons significant in our past.
- C Property embodies the distinctive characteristics of a type, period, or method of construction or represents the work of a master, or possesses high artistic values, or represents a significant and distinguishable entity whose components lack individual distinction.
- D Property has yielded, or is likely to yield, information important in prehistory or history.

Criteria Considerations

(Mark "x" in all the boxes that apply.)

Property is:

- A owned by a religious institution or used for religious purposes.
- B removed from its original location.
- C a birthplace or grave.
- D a cemetery.
- E a reconstructed building, object, or structure.
- F a commemorative property.
- G less than 50 years of age or achieved significance within the past 50 years.

Areas of Significance

(Enter categories from instructions)

ARCHITECTURE

Period of Significance

1906

Significant Dates

1906

Significant Person

(Complete if Criterion B is marked above)

N/A

Cultural Affiliation

N/A

Architect/Builder

Welch, William W.

Narrative Statement of Significance

(Explain the significance of the property on one or more continuation sheets.)

9. Major Bibliographical References

Bibliography

(Cite the books, articles, and other sources used in preparing this form on one or more continuation sheets.)

Previous documentation on file (NPS):

- preliminary determination of individual listing (36 CFR 67) has been requested
- previously listed in the National Register
- previously determined eligible by the National Register
- designated a National Historic Landmark
- recorded by Historic American Buildings Survey # _____
- recorded by Historic American Engineering Record # _____

Primary location of additional data:

- State Historic Preservation Office
- Other State agency
- Federal agency
- Local government
- University
- Other

Name of repository:

10. Geographical Data

Acreage of Property Less than one acre

UTM References

(Place additional UTM references on a continuation sheet.)

1	15	027950	4511850
	Zone	Easting	Northing
2			

3			
	Zone	Easting	Northing
4			

See continuation sheet

Verbal Boundary Description

(Describe the boundaries of the property on a continuation sheet.)

Boundary Justification

(Explain why the boundaries were selected on a continuation sheet.)

11. Form Prepared By

name/title Byron L. and Gail A. Barr

organization _____ date June 15, 1993

street & number 400 North 16th. Street telephone 712-542-5006

city or town Clarinda state Iowa zip code 51632

Additional Documentation

Submit the following items with the completed form:

Continuation Sheets

Maps

A **USGS map** (7.5 or 15 minute series) indicating the property's location.

A **Sketch map** for historic districts and properties having large acreage or numerous resources.

Photographs

Representative **black and white photographs** of the property.

Additional items

(Check with the SHPO or FPO for any additional items)

Property Owner

(Complete this item at the request of SHPO or FPO.)

name Byron L. and Gail A. Barr

street & number 400 North 16th. Street telephone 712-542-5006

city or town Clarinda state Iowa zip code 51632

Paperwork Reduction Act Statement: This information is being collected for applications to the National Register of Historic Places to nominate properties for listing or determine eligibility for listing, to list properties, and to amend existing listings. Response to this request is required to obtain a benefit in accordance with the National Historic Preservation Act, as amended (16 U.S.C. 470 *et seq.*).

Estimated Burden Statement: Public reporting burden for this form is estimated to average 18.1 hours per response including time for reviewing instructions, gathering and maintaining data, and completing and reviewing the form. Direct comments regarding this burden estimate or any aspect of this form to the Chief, Administrative Services Division, National Park Service, P.O. Box 37127, Washington, DC 20013-7127; and the Office of Management and Budget, Paperwork Reductions Projects (1024-0018), Washington, DC 20503.

United States Department of the Interior
National Park Service

National Register of Historic Places Continuation Sheet

Section number 7 Page 1

White, W.T.S., House and Carriage House
Page County, Iowa

DESCRIPTION

The former W.T.S. White House consists of a 2 1/2 story dwelling and carriage house. The house is surrounded by a residential neighborhood and faces Sixteenth Street. This particular example is transitional. In terms of its essentially symmetrical forms and detailing, the house is Colonial Revival. The wood frame Colonial Revival style has details such as classical Tuscan columns on the front porch, dentil cornice, and diamond lights in the second story windows. Influence of the often asymmetrical Queen Anne style is carried over in the projecting bays and roof form.

Above the front porch is a hipped gable with a keystone and cameo window with leaded glass. The east slope of the shingled roof contains a pair of hipped-roof chimneys, and porch piers are built of brick. The south side of the house features a bay window on each level accented by a railing around an open balcony. Bay windows on the north side of the house are leaded stained glass which display a Victorian influence. The 99 X 160 foot tree-lined lot is located within the original town plat of 1853. It adjoins the unique 100 foot-wide boulevard known as the Promenade, located two blocks outside the public square on all sides. West of the house, behind the house's frontal plane, is the carriage house. The carriage house faces south to Lincoln Street. It is of similar architectural treatment. The carriage house is capped by a shingled hipped roof, is of two stories, has two-over-two lights, and cupola on top. Cement curbing outlines the curved driveway to the street. The property is in excellent condition and has had very little alterations since its construction in 1906. The interior of the house reflects a mixture of Mission, Art Nouveau, and Victorian influence.

W.T.S. White House is a domestic single family dwelling. The function of the house has not changed since the house was built in 1906. The carriage house continues to be a domestic secondary structure. Today it provides shelter for the automobiles. In 1906, the horse and buggy would have occupied the space inside.

United States Department of the Interior
National Park Service

National Register of Historic Places Continuation Sheet

Section number 7 Page 2

White, W.T.S., House and Carriage House
Page County, Iowa

DESCRIPTION CONTINUED

Located in an upstanding residential area on the corner of 16th Street and Lincoln Street, the nominated area is located in block five in the original plat of Clarinda. In walking distance are several churches, the public library, and Clarinda's business district. The boundaries have not changed since 1906.

The overall shape of this Colonial Revival is symmetrical in form with asymmetrical enhancements. The main portion of the house measures 40' X 40'. The front and back porches are supported by brick piers. Exclusively of frame, the two and one-half story house has the original clapboard siding. A saddleback roof is clad with asphalt shingles. The basement has a poured cement floor with concrete walls beneath ground level and brick above the ground. Three steel posts in the basement support a large center wooden beam. Interior walls are plaster.

On the east, facing Sixteenth Street, is a large formal columned porch across the entire front of the house with ten tuscan order columns for support. The smaller back porch is located on the west side of the house. Originally, it was screened. In the 1960's, it was enclosed with eight single-light sash windows. Both porches are in excellent condition.

Several types of windows are found in the W.T.S. White House. Three large two-part windows with leaded glass top sections are on the main floor. Two of these are located on the east and one on the south incorporated in the bay window. A fourth one is on the second floor on the south wall located directly above the other one, also a bay window. Other windows located on the main floor are one-over-one lights. On the north side of the house is a bay window with stained glass. Soft colors with gentle curves and geometric designs give a look of Art Nouveau. Thirteen windows on the second floor are multiple-upper-diamond light sash with single-light lower sash. In the attic there are three bands of windows, with three windows in each set. These are located on the north, east, and south. Each dormer contains a window. All 11

United States Department of the Interior
National Park Service

National Register of Historic Places
Continuation Sheet

Section number 7 Page 3

White, W.T.S., House and Carriage House
Page County, Iowa

DESCRIPTION CONTINUED

windows in the attic have the multi-upper-diamond light sash with single-light lower sash. Windows throughout the house open and close and are in good condition.

The main entrance on the east is enhanced by a large beveled glass, solid oak door with side lights. The side lights are beveled leaded glass. A second inside door has a large oval beveled glass. The north side of the house has an entrance which leads to the basement or into the stairhall. This door is an oak door with a square beveled glass window on top with three panels on the bottom. The same type of door is located at the west entrance into the house. Twenty-five, six panel, solid oak doors are found throughout the house. Doors on the main floor are stained with the doors upstairs painted white. All doors are in excellent condition with original brass door knobs and plates.

Two brick chimneys extend high above the roof line. The chimney located on the outside south wall services both fireplaces with separate flues. A large square chimney located up through the center of the house serves as a vent for the gas furnace. A cookstove was originally connected to this chimney in the kitchen. It was taken out in 1992. Both chimneys are in good safe working condition.

Other specific features are two gabled dormers located on the east slope of the shingled roof. The dormers are also shingled.

Several decorative elements are found in this Colonial Revival home. Hiding the ends of the horizontal roof timbers are bargeboards, placed against the incline of the gable. On the balcony projecting from the south upper wall and on the front porch are railings supported by balustrades. A keystone is located in the center of the arch in the cameo window on the east. A dentil cornice accents both the front and back porch. Straight sides of

United States Department of the Interior
National Park Service

National Register of Historic Places Continuation Sheet

Section number 7 Page 4

White, W.T.S., House and Carriage House
Page County, Iowa

DESCRIPTION CONTINUED

the gable are accented by four pilasters projecting only slightly from the wall. All of these details are in excellent condition.

The main entrance leads into a 4' X 8' foyer. Leaded beveled glass side lights highlight this entry. On the floor are mosaic hexagonal marble tiles. The interior of the main floor is partitioned into three bays across the front. The double front doors from the foyer open into a large entry hall. An original ornate hanging fixture lights up this room. It is a brass cupid atop a glass colored globe. To the right is the parlor with Corinthian capitals at the entrance. At the base of the capitals, the oak wall divider is accented by a carved leaf wreath on each side. To the left from the entry hall is the living room with a brick fireplace featuring egg and dart motif in the brick ornamentation on the mantelpiece and plate shelf. The bottom of the fireplace has a wide brick floor skirting. Brick pilasters accent both sides of the ornate firebox. An oak frieze molding accents the walls in the living room. Solid oak, six-panel, pocket doors close the living room from the entry and dining room. Both of these front rooms have large two-part windows facing east whose top sections beveled and leaded glass. Matching brass Mission-style ceiling fixtures light up these rooms.

The dining room adjoins the living room to the west. Its bay window with leaded glass, oak plate rail, original stained glass chandelier, and a heating radiator with a built-in muffin warmer are outstanding features. Throughout these prominent rooms of the main floor are wide oak baseboards and oak hardwood floors with mitered corners. All doors throughout the house are six-panel solid oak. All woodwork has egg and dart molding. Brass door knobs and plates also are accented with egg and dart trim.

The pantry adjoins the dining room to the west and is located in the southwest corner of the house. The kitchen is north off of the pantry. Several distinctive features are in the kitchen. A door bell system for the house is located in this room. Brass

United States Department of the Interior
National Park Service

National Register of Historic Places Continuation Sheet

Section number 7 Page 5

White, W.T.S., House and Carriage House
Page County, Iowa

DESCRIPTION CONTINUED

arrows point to the location of the bell, such as front door, side door, dining room, and bathroom upstairs. A brass whistle intercom leads to a bedroom upstairs. The kitchen also has a four-tiered pantry radiator designed as a combination radiator and plate warmer. A narrow curved stairway is on the north wall which leads up to the northwest bedroom on the second level.

Downstairs in the center of the house, is a stairhall off the front entry way. An elegant oak dog-leg stairway leads north towards the stained glass bay windows located halfway with a window seat over the curved radiator. The stairway curves upward back to the south to the second floor. A spacious landing connects five bedrooms and a bathroom. Each bedroom has a closet, oak hardwood floors with mitered corners, original brass wall sconces and ceiling fixtures, and wide baseboards. All woodwork upstairs is painted white. Each room has its own distinctive features. The northeast bedroom has a pedestal porcelain shaving sink. The middle bedroom to the east has a Victorian influence with a gold metal crown molding and a brass ceiling fixture with glass beaded fringe. In the southeast bedroom there is a beautiful white fireplace with beveled mirrors. White glazed brick forms the face and floor skirting. The fireplace features an overmantel decorated with two festoon bows and garland leaves connected by a bead molding. The firebox has an ornate cover. The largest bedroom is located on the southwest. A large bay window overlooks the yard and street. A window seat covers the radiator. The whistle intercom is in this room that connects to the kitchen. The bathroom has all of the original brass light fixtures, towel bars and hooks, soap dish, clawfoot bathtub and bidet. The beveled oval mirror is dated on the back "1906". A wainscot molding accents the walls. The back stairway comes into the northwest bedroom. This room, designed for maid's quarters or storage, has a pine floor. The room features a frieze that is approximately two feet from the ceiling. A stairway leads from the upstairs landing to the attic. A large room on the northeast has been finished at the top of the stairs to divide it into two sections. The rest of the attic is

United States Department of the Interior
National Park Service

National Register of Historic Places Continuation Sheet

Section number 7 Page 6

White, W.T.S., House and Carriage House
Page County, Iowa

DESCRIPTION CONTINUED

open and provides storage over the entire house. The entire attic has pine floors. Looking out of the south windows provides a view of the boulevard, city square, and Page County Courthouse.

The carriage house, also built in 1906, sits on the westside of the lot. It is a two story building that measures 25 X 30 feet. Built on a cement foundation, it stands straight and looks to be in the original condition. The wooden buggy doors have been replaced with garage doors on the south. The buggy entrance on the north side has been neatly closed and filled with clapboard siding. Second story hay doors on the north and south both glide on iron rails to open. Windows have two-over-two lights. For ventilation the tin cupola still adorns the top of the hipped roof. Guttering outlines the eaves and extends downward into cement drainage troughs. Inside the wall supports for the horse stall can be seen. Wooden steps extend up the west wall over the workbench. The floor in the attic retains the doors that were used to drop hay and grain to the horses. Few carriage houses remain in the Clarinda area that clearly reveal a piece of history, as the horse and buggy were the major means of transportation in the early 1900's.

Other elements add to the historical character of the property. Early sidewalks outline the property and lead to the front and back entrances of the house. Elm trees were destroyed in the 1960's by the elm disease. They were replaced by six hard maple trees that line the south and east side of the yard. These provide shade in the summer and beautiful color in the fall. An original driveway is on the north side of the house and extends west to the carriage house and out to meet Lincoln Street on the south. We have added a twelve-foot octagon gazebo, shingled and painted white to coordinate with the house. It provides a beautiful and quiet place to sit outside among the flower garden.

Outside, few visible changes have been made. In the 1960's, the back porch was enclosed. Special attention was made to keep the dentil cornice and not distract from the original architecture.

United States Department of the Interior
National Park Service

National Register of Historic Places Continuation Sheet

Section number 7 Page 7

White, W.T.S., House and Carriage House
Page County, Iowa

DESCRIPTION CONTINUED

The original screens have been replaced by aluminum storm windows which protect the stained glass windows on the entire north side of the house. In 1982, the wood shingles were replaced with asphalt shingles.

Minor updating was done on the inside during the 1940's. A section of Youngstown metal kitchen cupboards were added. Wallpaper and linoleum was installed in the upstairs bathroom. The coal furnace was replaced in 1975 with a small economical gas unit to heat the water that circulates through the radiators. In 1992, an update was made to all electrical entrances and fuse boxes in the house. Additional electrical outlets were added throughout. Original electrical wires are enclosed in conduit pipe. None of the interior walls have been altered.

No deterioration due to vandalism, neglect, lack of use, or weather is noticeable to this property or its buildings. Nothing has been allowed to have an effect on the property's historic integrity.

United States Department of the Interior
National Park Service

National Register of Historic Places
Continuation Sheet

Section number 8 Page 8

White, W.T.S., House and Carriage House
Page County, Iowa

STATEMENT OF SIGNIFICANCE

The W.T.S. White House and Carriage House meets Criteria C qualifying the property for National Register listing. The home is an exceptional example in the area of architecture, as one of the best residential examples of Colonial Revival design in the city of Clarinda. Built in 1906, this property, well preserved and carefully maintained, continues to be a prominent home in Clarinda. The exterior and the interior of this property physically reflects its period of significance.

The W.T.S. White House and Carriage House is an excellent example of virtually unaltered transitional Colonial Revival design. These large, well-built homes were a style unto themselves. It was a Post-Victorian architecture. 1895-1910 was a transition period. This home reflects the transition in taste. Contextually it relates to the influence of architects of the wealthy searching for an architecture that was American. Quality materials and accessories were used to complement the style. Experience of W.W. Welch to build commercial buildings on a much larger scale proved to help the home withstand time in the same manner.

The W.T.S. White House is a documented work of William W. Welch, a major architect and builder in southwestern Iowa. The activities of W.W. Welch have been important to the development of Clarinda and other cities. He designed a number of large projects in Iowa and western Illinois. In Creston, he built the Masonic Temple, a large Catholic church and also a Methodist Episcopal church. He was awarded contracts for nearly all of the large and substantial buildings in Clarinda, including both residences and businesses. Nearly all of the business blocks on the public square are monuments to his skill and handiwork. He designed and erected the public library, which is without doubt one of the prettiest in the state. He was also executed contracts in Creston, Mount Pleasant, and Glenwood. He was very active in public measures for the benefit of Clarinda and vicinity in promoting the attractive appearance and substantial character of the city.

United States Department of the Interior
National Park Service

National Register of Historic Places Continuation Sheet

Section number 8 Page 9

White, W.T.S., House and Carriage House
Page County, Iowa

STATEMENT OF SIGNIFICANCE CONTINUED

The first owner, W. T. S. White, purchased the property in 1905 for \$1,900.00. The house and carriage house were built and completed in March of 1906. A wealthy man, White was president of the Clarinda Poultry Butter and Egg Company. Produce was marketed in the United States, England and Scotland with annual sales of \$3,000,000. He was active in Clarinda in business and community development. W. T. S. White was on the Board of Directors of the Clarinda National Bank and a chief promotor of the Clarinda Improvement Club. In 1907 he moved to Chicago and later to Brookline, Massachusetts, where he died in 1943.

A. U. and Agnes Hunt purchased the property from W. T. S. White for \$8,000.00. After passing through two short-term owners, the property was purchased in 1920 by Allen and Minnie Rose Davison for \$12,500.00. In 1938 their daughter, Essie Pearl Davison, inherited the property and lived there until 1991. In 1993, the Essie Davison Estate sold the property to its present owners, Byron and Gail Barr. The Barrs continue to maintain the house and carriage house.

United States Department of the Interior
National Park Service

**National Register of Historic Places
Continuation Sheet**

Section number 8-10 Page 10

White, W.T.S., House and Carriage House
Page County, Iowa

BIBLIOGRAPHY

KERSHAW, W.L., HISTORY OF PAGE COUNTY VOL I. Chicago, IL: CLARKE, S.J. PUBLISHER 1909.

KERSHAW, W.L., HISTORY OF PAGE COUNTY VOL II. Chicago, IL: CLARKE, S.J. PUBLISHER 1909.

PEVSNER, NIKOLAUS, A DICTIONARY OF ARCHITECTURE. New York, NY: THE OVERLOOK PRESS 1966.

POPELIERS, JOHN C. WHAT STYLE IS IT? A GUIDE TO AMERICAN ARCHITECTURE. Washington, D.C.: THE PRESERVATION PRESS 1983.

VERBAL BOUNDARY DESCRIPTION

The Southeast Quarter (SE1/4) and the East Ten (10) Feet of the Southwest Quarter (SW1/4) of Block Five (5) in the Original Plat of the City of Clarinda, Page County, Iowa.

BOUNDARY JUSTIFICATION

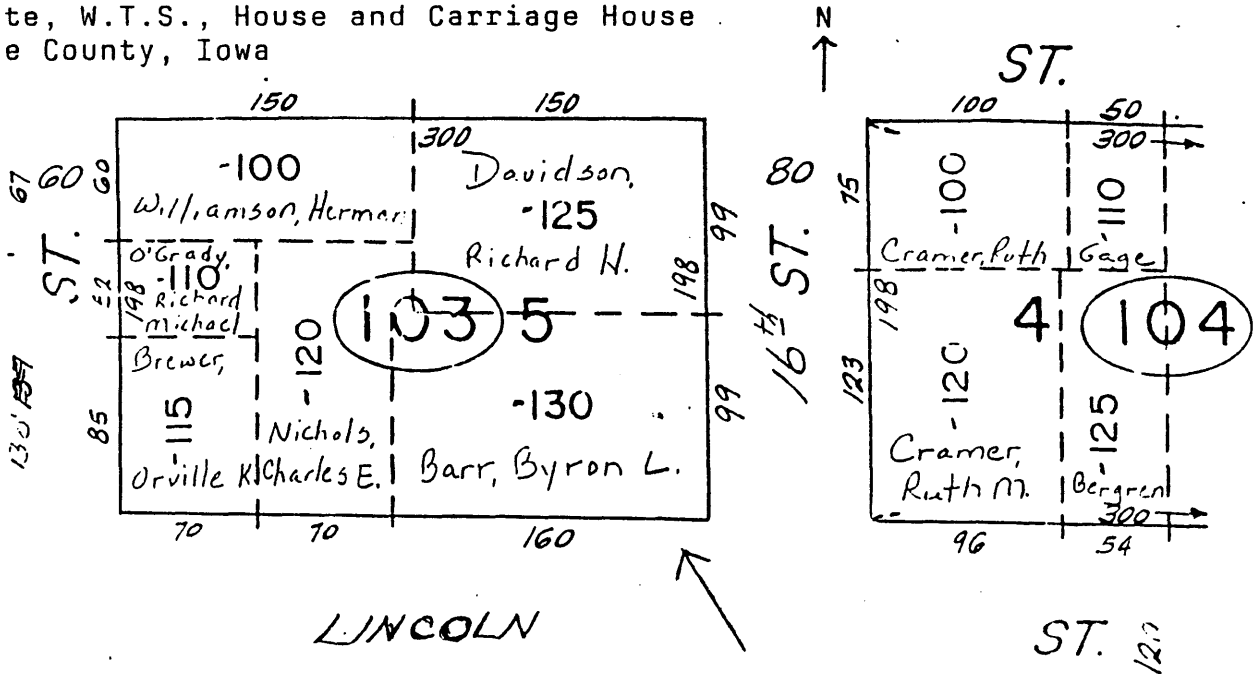
The nominated area includes the two nominated features, the house and the carriage house, which are contributing and the gazebo which is noncontributing, these constitute the resource and the property included in the area described above. The boundaries have been historically associated with the property.

United States Department of the Interior
National Park Service

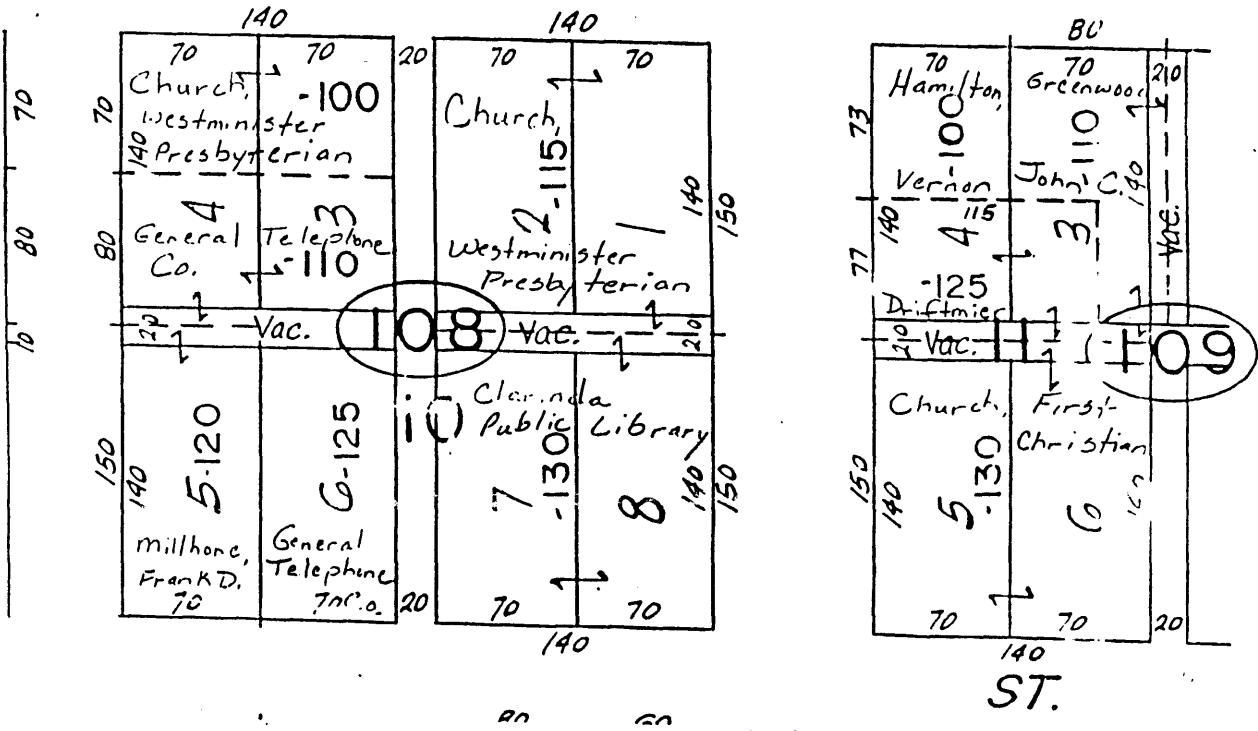
National Register of Historic Places
Continuation Sheet

Section number _____ Page 11

White, W.T.S., House and Carriage House
Page County, Iowa



LINCOLN



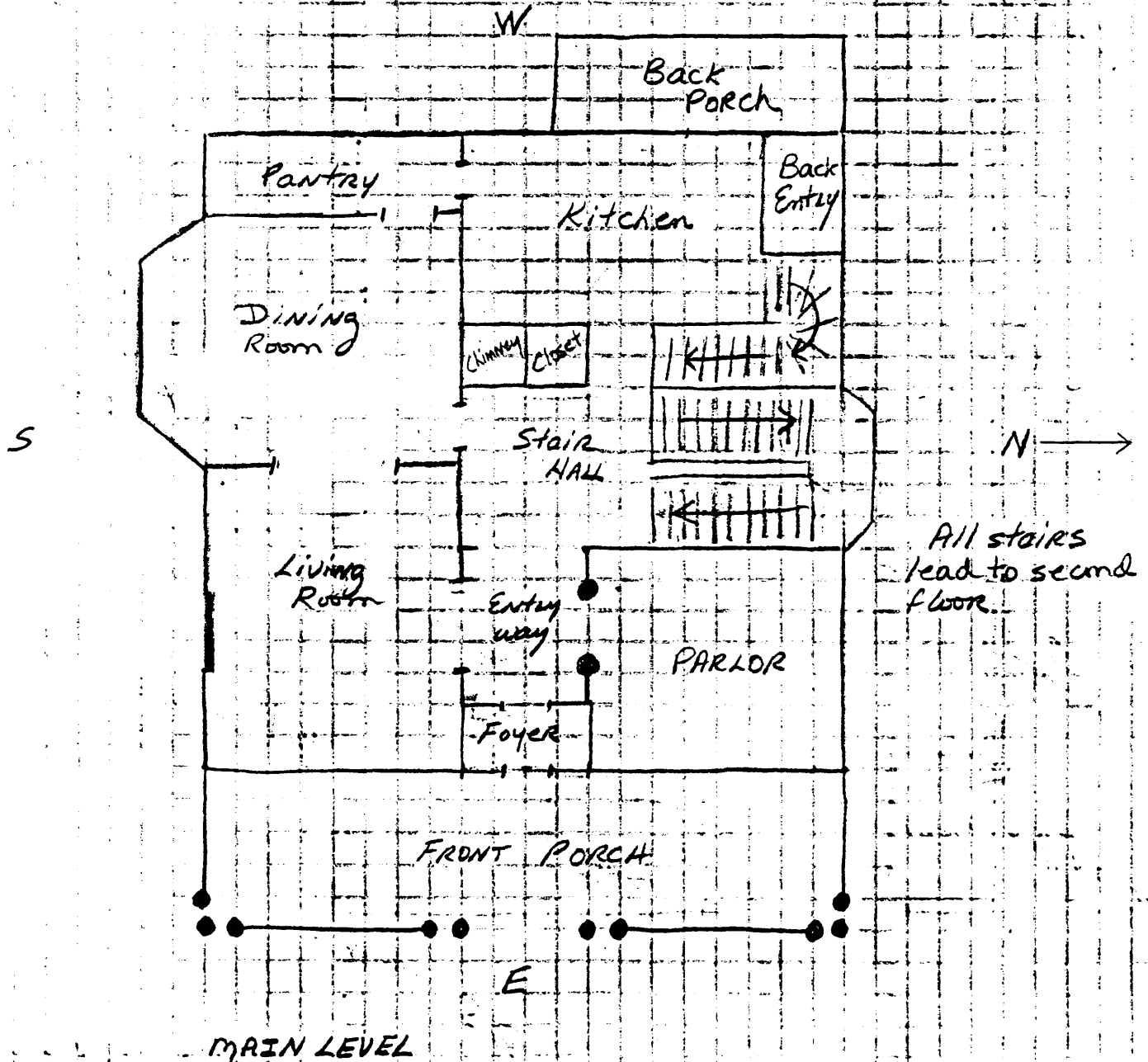
United States Department of the Interior
National Park Service

National Register of Historic Places
Continuation Sheet

Section number _____ Page 12

White, W.T.S., House and Carriage House
Page County, Iowa

N →



1 square equals 2'

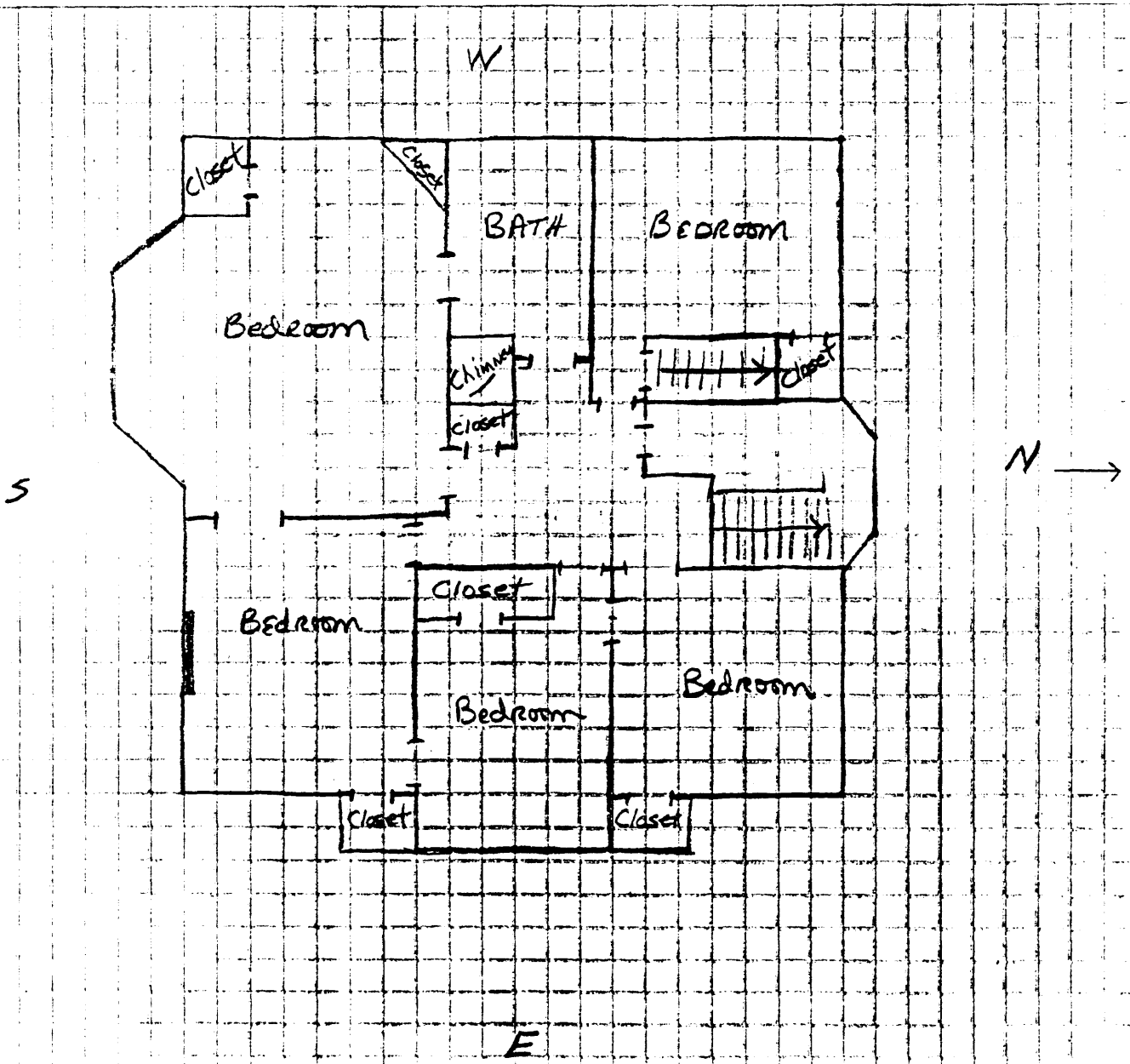
United States Department of the Interior
National Park Service

National Register of Historic Places
Continuation Sheet

Section number _____ Page 13

White, W.T.S., House and Carriage House
Page County, Iowa

N →



SECOND FLOOR

1 square = 2 feet

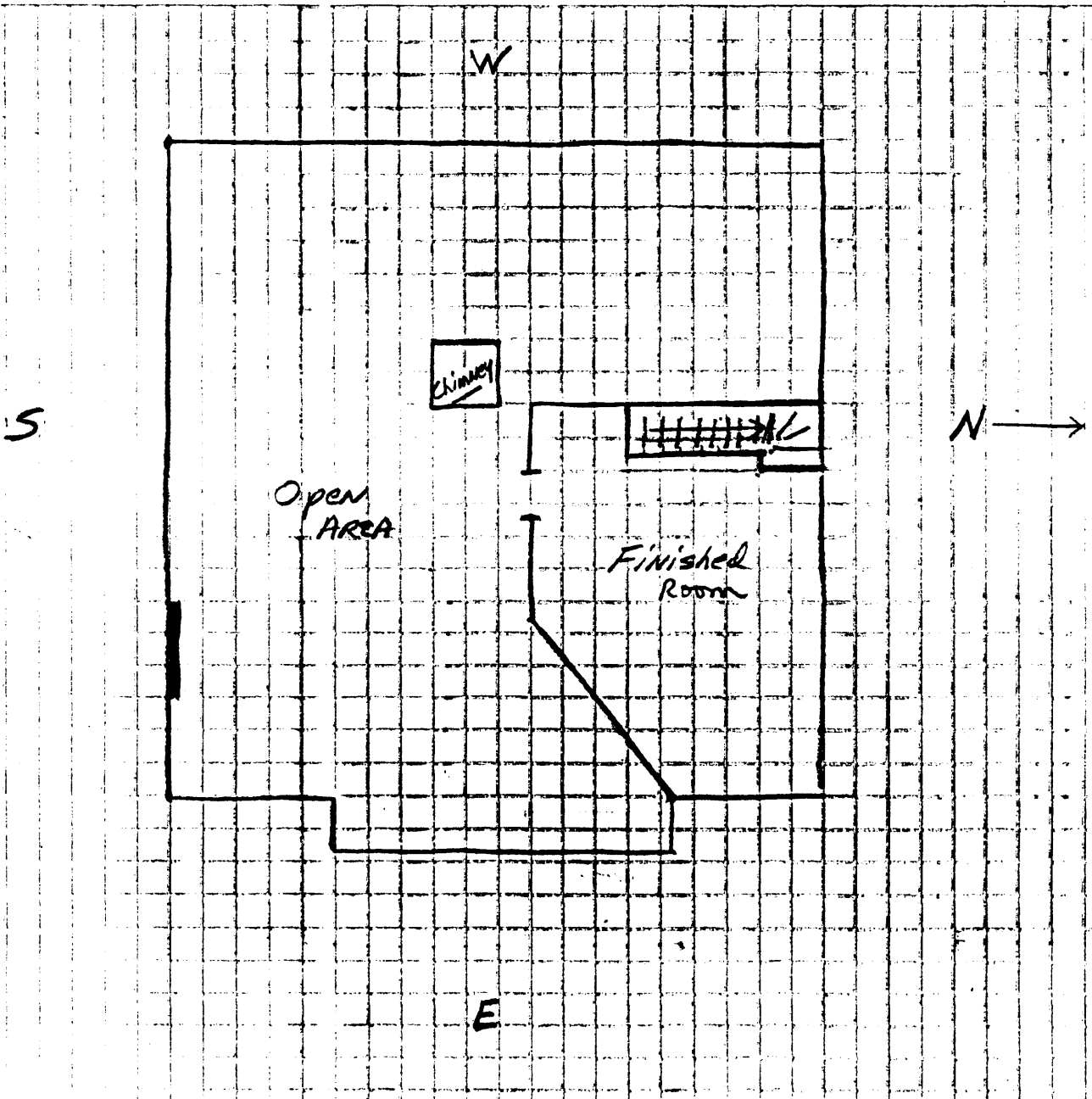
United States Department of the Interior
National Park Service

National Register of Historic Places
Continuation Sheet

Section number _____ Page 14

White, W.T.S., House and Carriage House
Page County, Iowa

N →



ATTIC

1 square = 2 feet