



SOUTH PORTLAND HISTORIC DISTRICT

Aerial view of district

Portland, Multnomah Co., OR

Kathy Taylor, photographer

taken in 1977

Negatives held by Bureau of Planning, City of Portland

Rm. 1002, 1120 SW 5th Ave

Portland, OR 97204

looking north towards downtown Portland

# 1 of 24



SOUTH PORTLAND HISTORIC DISTRICT

ROSS PLUMMER HOUSE, SW 1st & Hooker (no longer extant)  
Portland, Multnomah County, OR

Unknown photographer  
taken Dec. 13<sup>th</sup> 1983

Negatives held by OR Historical Society  
1230 SW PARK Ave.  
Portland, OR 97205

Main facade, looking west

#2 of 24



SOUTH PORTLAND HISTORIC DISTRICT  
SW Meade & Corbett (no longer extant)  
Portland, Multnomah Co., OR

Unknown photographer

Taken at an unknown date

Negatives held by OR Historical Society

1230 SW Park Ave.

Portland, OR 97205

Looking north from SW Meade & Corbett

# 3 of 24



SOUTH PORTLAND HISTORIC DISTRICT  
SW Grover & Kelly (no longer exist)  
Portland, Multnomah County, OR

Unknown photographer  
taken c. 1926

Negatives held by OR Historical Society  
1230 SW Park Ave.  
Portland, OR 97205

looking east from SW Grover & Kelly  
# 4 of 24



WINTLER DRUG CO.

BROM-SELTZER

Relieves  
Simple  
HEADACHES



Calms  
your  
NERVES

MADON-YT37A2-VANTZ

SOUTH PORTLAND HISTORIC DISTRICT  
195 SW Gibbs St. (no longer extant)

Portland, Multnomah Co. OR

Unknown photographer

taken c. 1935

Negatives held by OR Historical Society

1230 SW PARK Ave.

Portland, OR 97205

#5 of 24



SOUTH PORTLAND HISTORIC DISTRICT

Access to Ross Island Bridge, looking north towards downtown  
Portland Multnomah Co. OR

Unknown photographer

taken at an unknown date

Negatives held by OR Historical Society

1230 SW Park Ave

Portland, OR 97205

looking north towards downtown

# 3 of 24



ONE WAY

STOP

ONLY

SOUTH PORTLAND HISTORIC DISTRICT

#5: 19-21 SW Hooker St. #267-290: 25-35 SW Hooker St.

Portland, Multnomah Co., OR

Liza Mickle, photographer

taken June 26, 1997

Negatives held by Bureau of Planning, City of Portland

Rm. 1002, 1150 SW 5th Ave.

Portland, OR 97204

looking west from SW Front Ave.

#7 of 24



SOUTH PORTLAND HISTORIC DISTRICT

# 261: 2734 - 2740 SW 2nd Ave.

Portland, Multnomah Co., OR

Kathy Taylor, photographer

taken in 1977

Negatives held by Bureau of Planning, City of Portland

Rm. 1002, 1120 SW 5th Ave.

Portland, OR 97204

Main facade, looking east from corner of SW 2nd & Meade

# 8 of 24





SOUTH PORTLAND HISTORIC DISTRICT

# 71: 3030 SW 2nd Ave:

Portland, Multnomah Co., OR

Kathy Taylor, photographer

taken in 1977

Negatives held by Bureau of Planning, City of Portland  
Rm. 1002, 1120 SW 5th Ave.

Portland, OR 97204

Main facade, looking southeast

#9 of 24



SOUTH PORTLAND HISTORIC DISTRICT

#78: 3101-3105 SW 1st Ave.

Portland, Multnomah Co., OR

Kathy Taylor, photographer

taken in 1977

Negatives held by Bureau of Planning, City of Portland

Rm. 1002, 1120 SW 5th Ave.

Portland, OR 97204

East & north facades, looking west from corner of SW 1st & Woods

#10 of 24



SOUTH PORTLAND HISTORIC DISTRICT

#223-225: 3404 - 3414 SW Water Ave

Portland, Multnomah Co., OR

Michelle Lutino, photographer

taken June 24, 1997

Negatives held by Bureau of Planning, City of Portland

Rm. 1002, 1120 SW 5th Ave

Portland, OR 97204

looking northeast from SW Water Ave.

#11 of 24



SOUTH PORTLAND HISTORIC DISTRICT

#147: 3317 SW Kelly Ave / #149-150: 3321-3325 SW Kelly Ave.

Portland, Multnomah Co., OR

Michelle Lutino, photographer

taken June 24, 1997

Negatives held by Bureau of Planning, City of Portland

Rm. 1002, 1120 SW 5th Ave.

Portland, OR 97204

looking west from SW Kelly Ave.

# 12 of 24





SOUTH PORTLAND HISTORIC DISTRICT

#140: 3208 SW Kelly Ave.

Portland, Multnomah Co., OR

Michelle Lutino, photographer

Taken June 24, 1997

Negatives held by Bureau of Planning, City of Portland

Rm. 1002, 1120 SW 5th Ave.

Portland, OR 97204

Main facade, looking east

#13 of 24



SOUTH PORTLAND HISTORIC DISTRICT

#199-200, 207: 14-24 SW Whitaker St. / #201: 3417 SW Front Ave.

Portland, Multnomah Co., OR

Michelle Lutino, photographer

taken June 24, 1997

Negatives held by Bureau of Planning, City of Portland  
Rm. 1002, 1120 SW 5th Ave.  
Portland, OR 97204

Main facades, looking southeast from SW Whitaker St.  
#14 of 24



SOUTH PORTLAND HISTORIC DISTRICT

# 203-205: 3430-3436 SW 1st Ave; 25 SW Curry St.

Portland, Multnomah Co., OR

Michelle Lutino, photographer

taken June 24, 1997

Negatives held by Bureau of Planning, City of Portland  
Rm. 1002, 1120 SW 5th Ave.

Portland, OR 97204

looking northeast from corner of SW 1st & Curry

# 15 of 24



SOUTH PORTLAND HISTORIC DISTRICT

#186-188: 3311-3323 SW 1st Ave.

Portland, Multnomah Co., OR

Liza Mickle, photographer

taken June 26, 1997

Negatives held by Bureau of Planning, City of Portland

Rm. 1002, 1120 SW 5th Ave.

Portland, OR 97204

Main facades, looking west

#16 of 24





SOUTH PORTLAND HISTORIC DISTRICT

# 84-87 : 3122-3138 SW 2nd Ave.

Portland, Multnomah Co., OR

Liza Mickle, photographer

taken June 26, 1997

Negatives held by Bureau of Planning, City of Portland  
Rm. 1002, 1120 SW 5th Ave.

Portland, OR 97204

Main facades, looking northeast from SW 2nd Ave.

# 17 of 24



SOUTH PORTLAND HISTORIC DISTRICT

# 84-35: 3132-3133 SW 2nd Ave.

Portland, Multnomah Co., OR

Liza Mickle, photographer

taken June 26, 1997

Negatives held by Bureau of Planning, City of Portland

Rm. 1002, 1120 SW 5th Ave.

Portland, OR 97204

Main facades, looking east

# 18 of 24



SOUTH PORTLAND HISTORIC DISTRICT

# 40-41: 124-136 SW Meade St.

Portland, Multnomah Co., OR

Don Pier, photographer

taken June 18, 1997

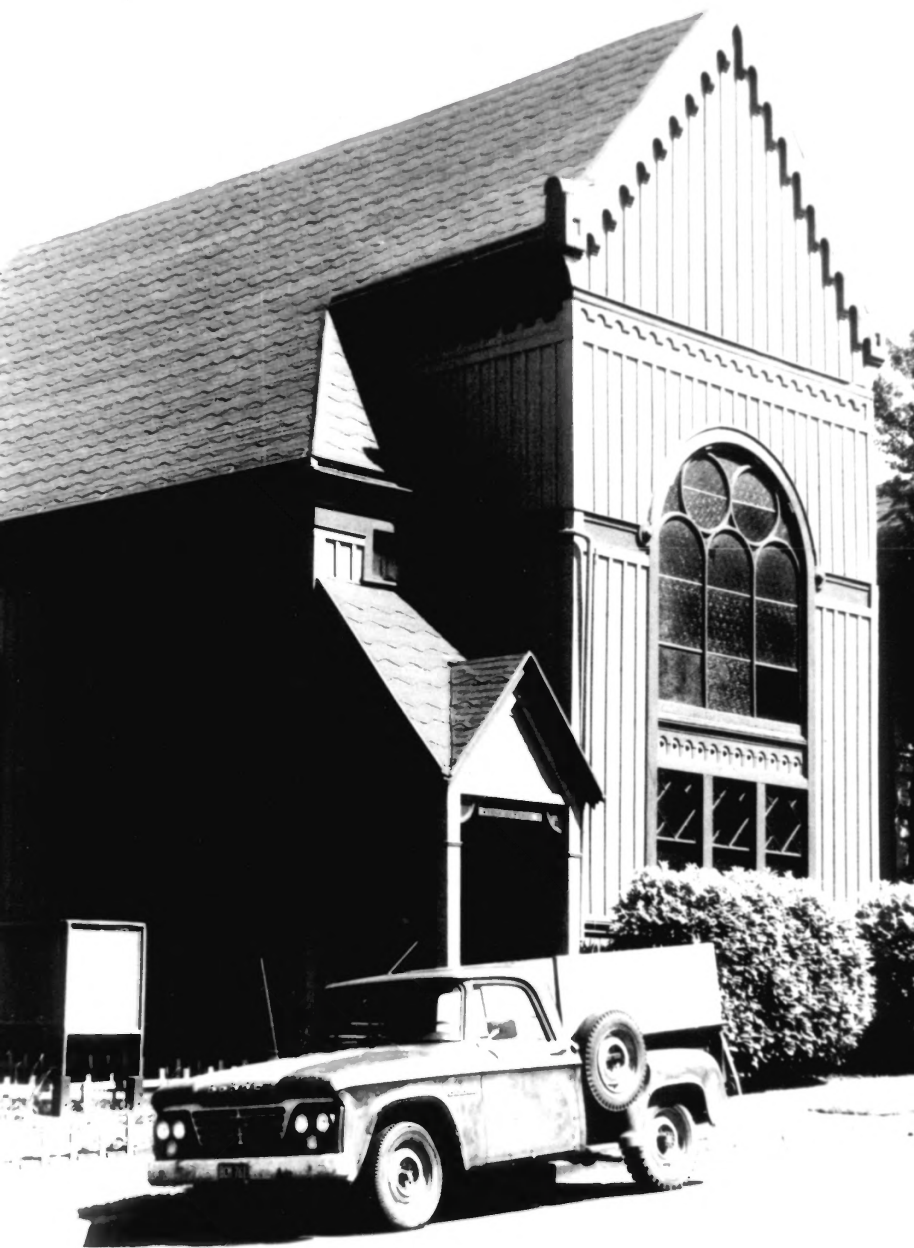
Negatives held by Bureau of Planning, City of Portland

Rm. 1002, 1120 SW 5th Ave.

Portland, OR 97204

looking southeast from SW 2nd & Meade St.

# 19 of 24



SOUTH PORTLAND HISTORIC DISTRICT

#182:3314 SW 1st Ave.

Portland, Multnomah Co., OR

Kathy Taylor, photographer

taken in 1977

Negatives held by Bureau of Planning, City of Portland  
Rm. 1002, 1120 SW 5th Ave.

Portland, OR 97204

looking northwest from SW 1st Ave.

# 20 of 24





ROSS ISLAND GROCERY

ROSS ISLAND GROCERY

MILK  
29¢

CROFTON  
ROSS ISLAND

SOUTH PORTLAND HISTORIC DISTRICT

#153, 155-156 - 3336 - 3338 SW Corbett Ave. ; 3322-3326 SW Corbett Ave.

Portland, Multnomah Co., OR

Michelle Luning, photographer

taken June 24, 1997

Negatives held by Bureau of Planning, City of Portland  
Rm. 1002, 1120 SW 5th Ave.

Portland, OR 97204

Looking northeast from corner of SW Corbett & Whitaker  
#21 of 24



LAIR HILL MARKET

ALASKAN  
RESTAURANT

OPEN

LAIR HILL  
MARKET

ARRY OUT PHONE 379-0200

# SOUTH PORTLAND HISTORIC DISTRICT

#32: 2823-2825 SW 1st Ave. / #34-35: 107-111 SW Hooker St.

Portland, Multnomah Co., OR

Liza Mickle, photographer

taken June 26, 1997

Negatives held by Bureau of Planning, City of Portland

Rm. 1002, 1120 SW 5th Ave.

Portland, OR 97204

Main facade, looking west

#22 of 24



# SOUTH PORTLAND HISTORIC DISTRICT

# 89: 204 - 208 SW Woods St.

Portland, Multnomah Co., OR

Kathy Taylor, photographer

taken in 1977

Negatives held by Bureau of Planning, City of Portland

Rm. 1002, 1120 SW 5th Ave.

Portland, OR 97204

East & north facades, looking west from SW 2nd & Woods

# 23 of 24



# SOUTH PORTLAND HISTORIC DISTRICT

#5: 19-21 SW Hooker St. / #267-270: 25-35 SW Hooker St. / #33-35:  
107-115 SW Hooker St.

Portland, Multnomah Co., OR

Don Pier, photographer  
taken June 18, 1997

Negatives held by Bureau of Planning, City of Portland  
Rm. 1602, 1120 SW 5th Ave.  
Portland, OR 97204

looking northwest towards downtown Portland  
#24 of 24