



Andrew Trumbo Log House
Frankfort
Franklin County
Kentucky

NOV 9 1976

Don Shively
October 1976
Department of Public Information,
Frankfort

Photo 1. ⁵⁸⁷ Front (west) elevation
showing general setting, facing
east.

NOV 17 1977



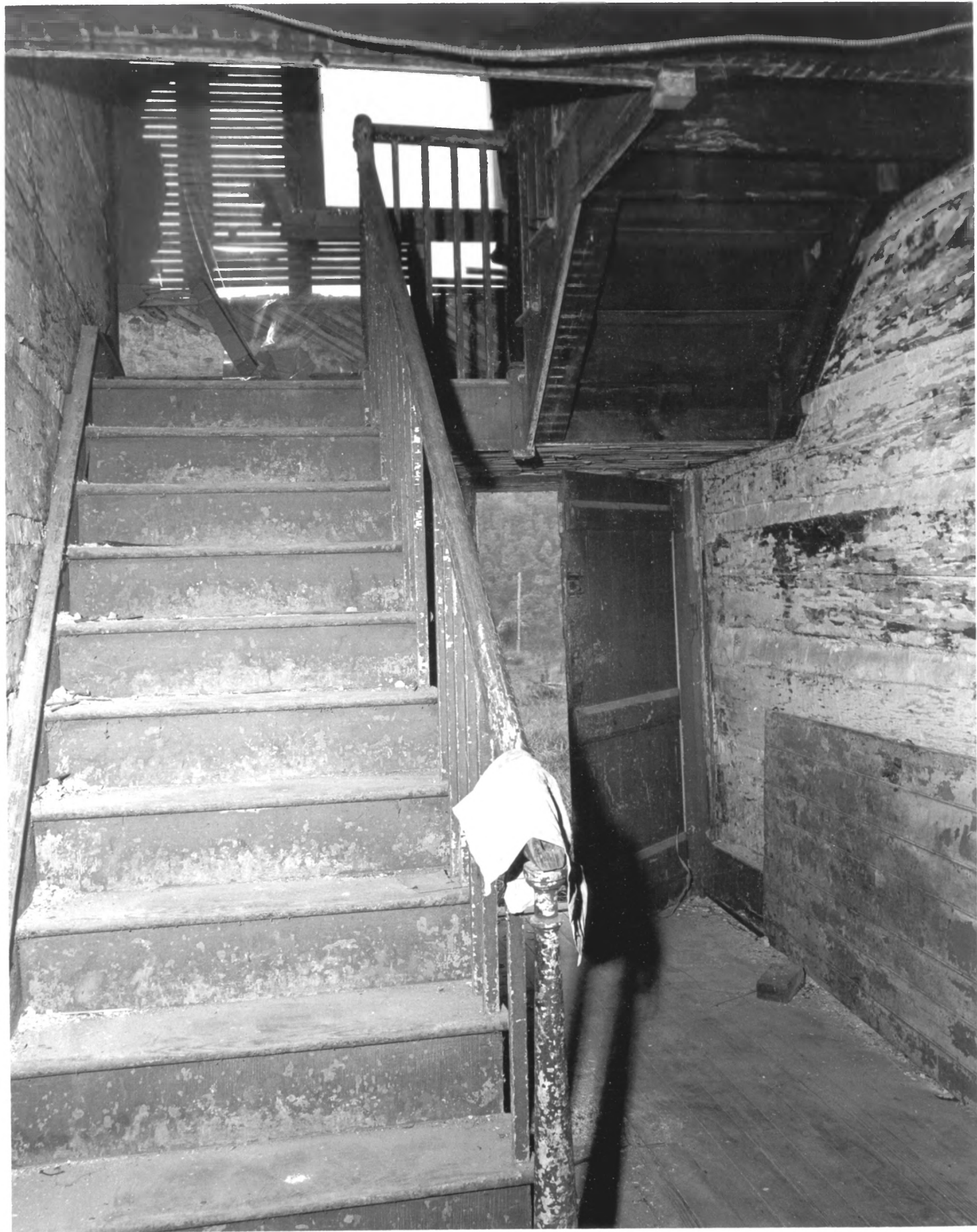
Andrew Trumbo Log House
Frankfort
Franklin County
Kentucky

NOV 9 1976

Don Shively
October 1976
Department of Public Information,
Frankfort

Photo 3. ⁹⁷ Photo showing notching
of logs and inset stone chimney
on end, facing north.

NOV 17 1977



Andrew Trumbo Log House
Frankfort
Franklin County
Kentucky

NOV 9 1976

Don Shively
October 1976
Department of Public Information,
Frankfort

Photo 4. ^{of 7} Photo showing open well,
two-flight stairway and dogtrot.

NOV 17 1977



Andrew Trumbo Log House
Frankfort
Franklin County
Kentucky

NOV 9 1976

Don Shively
October 1976
Department of Public Information,
Frankfort.

Photo 5. ⁸⁷ Photo showing right pen,
first floor. (Left pen identical.)

NOV 17 1977



Andrew Trumbo Log House
Frankfort
Franklin County
Kentucky

NOV 9 1976

Don Shively
October 1976
Department of Public Information,
Frankfort

Photo 6. ⁸⁷ Photo showing right pen,
second floor. (Left pen identical.)

NOV 17 1977



Andrew Trumbo Log House
Frankfort

Franklin County
Kentucky

Don Shively
October 1976
Department of Public Information,
Frankfort

Photo 7. ⁰⁸⁷ Photo showing half-cellar
under right (south) pen.

NOV 17 1977

NOV 9 1976

USGS Map, 7.5 Minute Series,
Frankfort East Quadrangle.
1970
UTM References: 16/688510/4227180

Andrew Trumbo Log House
Trumbo's Bottom, Frankfort
Franklin County
Kentucky

