



Sumpter Valley Railway Historic
District, Section 1
McEwen vicinity
Baker County, Oregon

1985 Photo
Sumpter Valley Railroad Restoration, Inc
PO Box 389
Baker OR 97814

Series B

1 of 5

Locomotive No. 3, Heisler (1914)

MAY 27 1987



Sumpter Valley Railway Historic
District, Section 1
McEwen vicinity
Baker County, Oregon

1985 Photo
Sumpter Valley Railroad Restoration, Inc
PO Box 389
Baker OR 97814

Series B

2 of 5

Locomotive NO. 3, Heisler (1914)
with excursion cars on restored
railroad segment.



Sumpter Valley Railway Historic
District, Section 1
McEwen vicinity
Baker County, Oregon

1985 Photo
Sumpter Valley Railroad Restoration, Inc
PO Box 389
Baker OR 97814

Series B

3 of 5

Locomotive No. 19, Midado (1920)



Sumpter Valley Railway Historic
District, Section 1
McEwen vicinity
Baker County, Oregon

1985 Photo
Sumpter Valley Railroad Restoration, Inc
PO Box 389
Baker OR 97814

Series B

4 of 5

Locomotive No. 20, Mikado (1920)



Sumpter Valley Railway Historic
District, Section 1
McEwen vicinity
Baker County, Oregon

1985 Photo
Sumpter Valley Railroad Restoration, Inc
PO Box 389
Baker OR 97814

Series B

5 of 5

Caboose NO. 5, Sumpter Valley
Railway (1926)

MAY 27 1987



Sumpter Valley Railway, Baker Co., OR
HISTORIC DISTRICT

Eastern terminus of nomination dis-
trict, near McEwen 1985

WARD TONSFIELD PHOTO
Negative at Oregon SHPO

1 of 55

HISTORIC PRESERVATION
OREGON STATE PARKS
525 Trade St. S.E.
Salem, Oregon 97310

MAY 27 1987



Sumpter Valley Railway, Baker co., OR
HISTORIC DISTRICT

McEwen townsite, with railway ROW
and state highway 7 at right, dredge
tailings at left. 1985

WANN TONS FIELDS PHOTO
Negative at Oregon SHPO

2 of 55

HISTORIC PRESERVATION
OREGON STATE PARKS
525 Trade St. S.E.
Salem, Oregon 97310



Sumpter Valley Railway, Baker Co., OR
HISTORIC DISTRICT

Station, water tank, and track of
Sumpter Valley Railway Restoration,
Inc., near Mc Ewen 1985

WIND TONS PHOTO PHOTO
Negative at Oregon SHPO

3 of 55

HISTORIC PRESERVATION
OREGON STATE PARKS
525 Trade St. S.E.
Salem, Oregon 97310



W. H. ECCLES LBR. CO.

8

Sumpter Valley Railway, Baker Co., OR
HISTORIC DISTRICT

Restored locomotive 1985

WARD TONSFELDT PHOTO
negative at Oregon SHPO

4 of 55

HISTORIC PRESERVATION
OREGON STATE PARKS
525 Trade St. S.E.
Salem, Oregon 97310



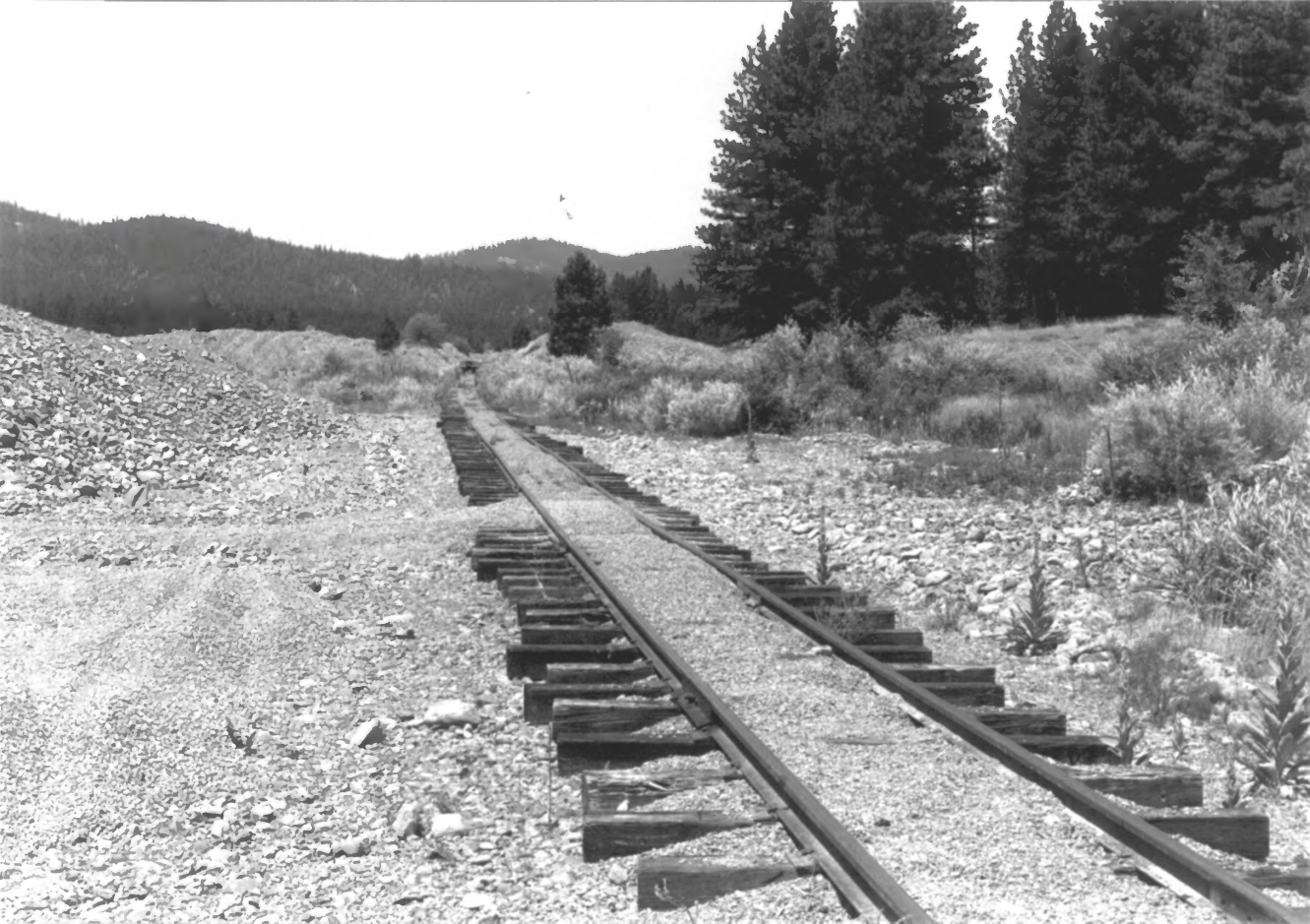
Sumpter Valley Railway, Baker Co., OR
HISTORIC DISTRICT

Locomotive awaiting restoration
1985

WANDA TONSFARLOTT PHOTO
Negative at Oregon SHPO

5 of 55

HISTORIC PRESERVATION
OREGON STATE PARKS
525 Trade St. S.E.
Salem, Oregon 97310



Sumpter Valley Railway, Baker Co., OR
HISTORIC DISTRICT

Restored track near Mc Ewen 1985

WARD TONSFALDT PHOTO
Negative out Oregon SHPO

6 of 55

HISTORIC PRESERVATION
OREGON STATE PARKS
525 Trade St. S.E.
Salem, Oregon 97310



Sumpter Valley Railway, Baker Co., OR
HISTORIC DISTRICT

Roadbed near western terminus of
nomination section 1 near the site
of the Sumpter wye 1985

WARD TONS FALDT PHOTO
Negative at Oregon SHPO

7 of 55

HISTORIC PRESERVATION
OREGON STATE PARKS
525 Trade St. S.E.
Salem, Oregon 97310



055

Sumpter Valley Railway, Baker Co., OR
HISTORIC DISTRICT

Roadbed near eastern terminus of
nomination section 2. Note ties
piled along right hand cut. 1985

WARD TONS FALDT PHOTO
Negative at Oregon SHPO

8 of 55

HISTORIC PRESERVATION
OREGON STATE PARKS
525 Trade St. S.E.
Salem, Oregon 97310



Sumpter Valley Railway, Baker Co., OR
HISTORIC DISTRICT

Roadbed with ties on grade climbing
Huckleberry Mountain near Larch
station site 1985

WAND TONSFALDT PHOTO
Negative at Oregon SHPO

9 of 55

HISTORIC PRESERVATION
OREGON STATE PARKS
525 Trade St. S.E.
Salem, Oregon 97310



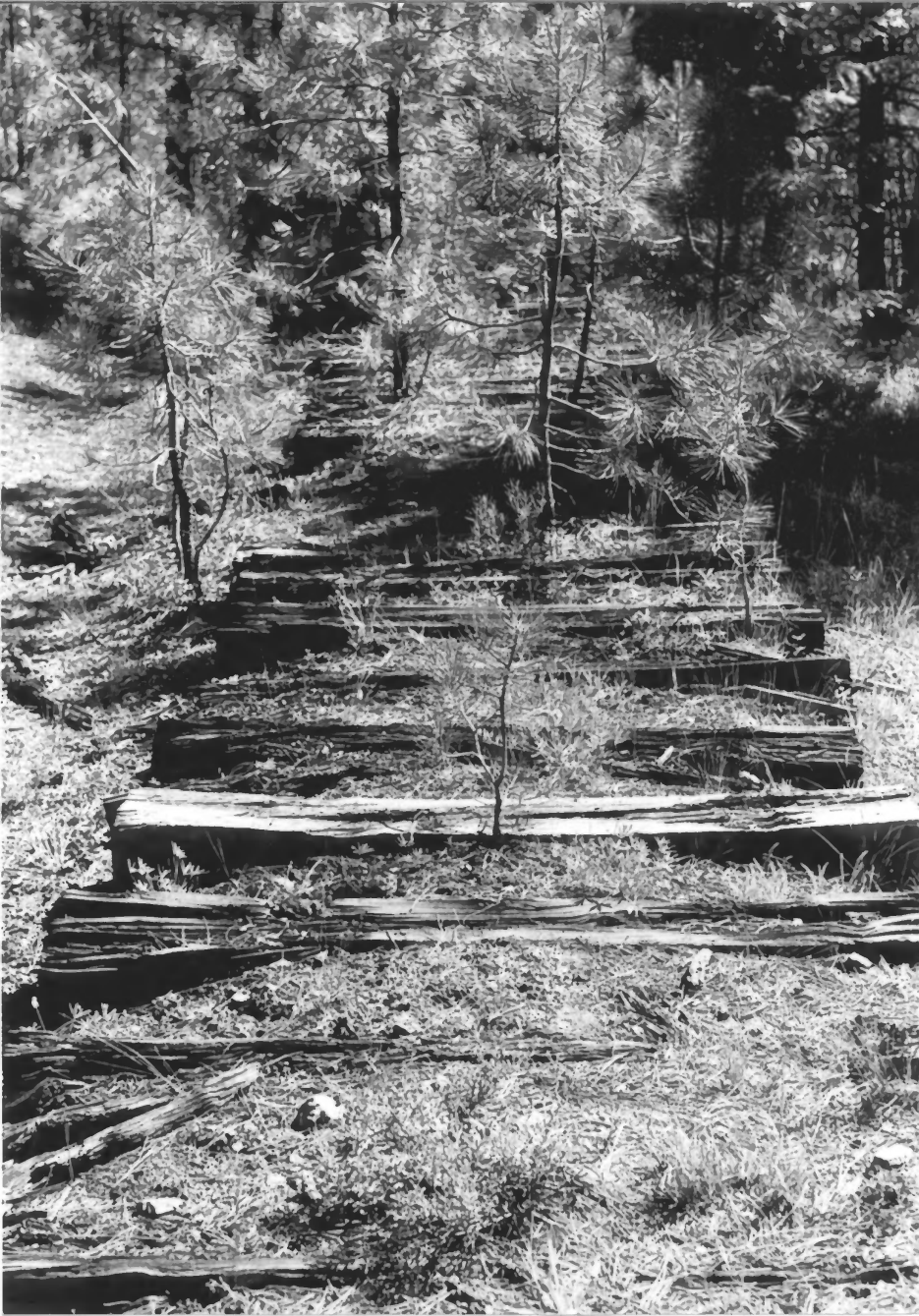
Sumpter Valley Railway, Baker Co., OR
HISTORIC DISTRICT

Alder Springs trestle site near
Larch station site 1985

WARD TONSFELDT PHOTO
Negative at Oregon SHPO

10 of 55

HISTORIC PRESERVATION
OREGON STATE PARKS
525 Trade St. S.E.
Salem, Oregon 97310



Sumpter Valley Railway, Baker Co., OR
HISTORIC DISTRICT

Roadbed with ties near McCoy Siding
site. 1985

WAND TONSFALDT PHOTO

Negative on file at Oregon SHPO

11 of 55

HISTORIC PRESERVATION
OREGON STATE PARKS
525 Trade St. S.E.
Salem, Oregon 97310



Sumpter Valley Railway, Baker Co., OR
HISTORIC DISTRICT

Roadbed with ties at the McCoy
Siding site 1985

WAND TONSFALDT PHOTO
Negative at Oregon SHPO

12 of 55

HISTORIC PRESERVATION
OREGON STATE PARKS
525 Trade St. S.E.
Salem, Oregon 97310



Sumpter Valley Railway, Baker Co., OR
HISTORIC DISTRICT

Whitney Station site, looking north
Note boxcar wreckage on right, non-
contributing building on left, ties
in foreground 1985

WARRINGTONS FALDT PHOTO
Negative at Oregon SHPO

13 of 55

HISTORIC PRESERVATION
OREGON STATE PARKS
525 Trade St. S.E.
Salem, Oregon 97310



Sumpter Valley Railway, Baker Co., OR
HISTORIC DISTRICT

Roadbed with ties north of Whitney
1985

WARD TONSFELDT PHOTO
Negative at Oregon SHPO

14 of 55

HISTORIC PRESERVATION
OREGON STATE PARKS
525 Trade St. S.E.
Salem, Oregon 97310



Sumpter Valley Railway, Baker Co., OR
HISTORIC DISTRICT

Roadbed with ties near Carroll Siding
Note spikes in place, erosion of
ballast, size of tree on the roadbed.
1985

WARD TONS FALLOT PHOTO
Negative at Oregon SHPO

15 of 55

HISTORIC PRESERVATION
OREGON STATE PARKS
525 Trade St. S.E.
Salem, Oregon 97315



Sumpter Valley Railway, Baker CO., OR
HISTORIC DISTRICT

Roadbed with ties near Carroll Siding
Note condition of ties. 1985

WAND TONS FAULT PHOTO
Negative at Oregon SHPO

16 of 55

HISTORIC PRESERVATION
OREGON STATE PARKS
525 Trade St. S.E.
Salem, Oregon 97310



Sumpter Valley Railway, Baker Co., OR
HISTORIC DISTRICT

Ties removed from roadbed by campers
near Carroll Siding 1985

WARD TONSFALDT PHOTO
Negative at Oregon SHPO

17 of 55

HISTORIC PRESERVATION
OREGON STATE PARKS
625 Trade St. S.E.
Salem, Oregon 97310



Sumpter Valley Railway, Baker Co., OR
HISTORIC DISTRICT

Carroll Siding site. Note difference
in condition of mainline and siding
ties 1985

WAND TONSFALDT PHOTO
Negative at Oregon SHPO

18 of 55

HISTORIC PRESERVATION
OREGON STATE PARKS
525 Trade St. S.E.
Salem, Oregon 97310



Sumpter Valley Railway, Baker Co., OR
HISTORIC DISTRICT

Remains of water tank near Carroll
Siding. 1985

WANN TONSFALDT PHOTO
Negative at Oregon SHPO

19 of 55

HISTORIC PRESERVATION
OREGON STATE PARKS
525 Trade St. S.E.
Salem, Oregon 97310



Sumpter Valley Railway, Baker Co., OR
HISTORIC DISTRICT

Washout near Tipton Station site
1985

WANN TONS FALDT PHOTO
Negative at Oregon SHPO

20 of 55

HISTORIC PRESERVATION
OREGON STATE PARKS
525 Trade St. S.E.
Salem, Oregon 97310



Sumpter Valley Railway, Baker Co., OR
HISTORIC DISTRICT

Tipton Station site, beginning of
the Tipton loop 1985

WAND TONSFALDT PHOTO
Negative at Oregon SHPO

21 of 55

HISTORIC PRESERVATION
OREGON STATE PARKS
525 Trade St. S.E.
Salem, Oregon 97310



Sumpter Valley Railway, Baker Co., OR
HISTORIC DISTRICT

Tipton Station site, 1985

22 of 55

WAND TOWNSHIP PHOTO
Negative at Oregon SHPO

HISTORIC PRESERVATION
OREGON STATE PARKS
525 Trade St. S.E.
Salem, Oregon 97310



Sumpter Valley Railway, Grant Co., OR
HISTORIC DISTRICT

Fill on horseshoe curves below
Tipton Station site 1985

WARD TONSFALDT PHOTO
Negative at Oregon SHPO

23 of 55

HISTORIC PRESERVATION
OREGON STATE PARKS
525 Trade St. S.E.
Salem, Oregon 97310



Sumpter Valley Railway, Grant Co., OR
HISTORIC DISTRICT

Cut on horseshoe curves below Tipton
Station site. Note grass seeded on
roadbed by logging contract crew
1985

WARR TONS FAULT PHOTO
Negative at Oregon SHPO

24 of 55

HISTORIC PRESERVATION
OREGON STATE PARKS
525 Trade St. S.E.
Salem, Oregon 97310



Sumpter Valley Railway, Grant Co., OR
HISTORIC DISTRICT

Roadbed near western terminus of
nomination section 2 near Austin
1985

WANDA TONSFARNT PHOTO
Negative at Oregon SHPO

25 of 55

HISTORIC PRESERVATION
OREGON STATE PARKS
525 Trade St. S.E.
Salem, Oregon 97310



Sumpter Valley Railway, Grant Co., OR
HISTORIC DISTRICT

Roadbed and ties near eastern
terminus of nomination section 3
1985

WARD TONSFALDT PHOTO
Negative at Oregon SHPO

26 of 55

HISTORIC PRESERVATION
OREGON STATE PARKS
525 Trade St. S.E.
Salem, Oregon 97310



Sumpter Valley Railway, Grant Co., OR
HISTORIC DISTRICT

Roadbed with ties near Dixie Station
site 1985

WARD TONS FALDT PHOTO
Negative on File, Oregon SHPO

27 of 55

HISTORIC PRESERVATION
OREGON STATE PARKS
525 Trade St. S.E.
Salem, Oregon 97310



Sumpter Valley Railway, Grant Co., OR
HISTORIC DISTRICT

Roadbed with ties at the switchbacks
below Dixie Station site 1985

WARD TONSFALDT PHOTO
Negative at Oregon SHPO

HISTORIC PRESERVATION
OREGON STATE PARKS
525 Trade St. S.E.
Salem, Oregon 97310



Sumpter Valley Railway, Grant Co., OR
Historic District

Roadbed with ties approaching the
switchbacks below Dixie Station
site. 1985

WARD TONSFALDT PHOTO
Negative at Oregon SHPO

29 of 55

HISTORIC PRESERVATION
OREGON STATE PARKS
525 Trade St. S.E.
Salem, Oregon 97310



Sumpter Valley Railway, Grant Co., OR
HISTORIC DISTRICT

Roadbed with ties at the crossing of
state highway 7

WARD TONS FALDT PHOTO

Negative on file at Oregon SHPO

30 of 55

HISTORIC PRESERVATION
OREGON STATE PARKS
525 Trade St. S.E.
Salem, Oregon 97310



Sumpter Valley Railway, Grant Co., OR
HISTORIC DISTRICT

Roadbed cut approaching Dads Creek
crossing

WANN TOWNSHIP PHOTO
Negative at Oregon SHPO

32 of 55

HISTORIC PRESERVATION
OREGON STATE PARKS
525 Trade St. S.E.
Salem, Oregon 97310



Sumpter Valley Railway, Grant Co., OR
HISTORIC DISTRICT

Wreckage of trestle across Dads
Creek at the western terminus of
nomination section 3

1985

WARD TONS FALLOT PHOTO

Negative on file at Oregon SHPO

33 of 55

HISTORIC PRESERVATION
OREGON STATE PARKS
525 Trade St. S.E.
Salem, Oregon 97310



Sumpter Valley Railway, Baker Co., OR
HISTORIC DISTRICT

Roadbed with ties in cut near the
eastern terminus of nomination
section 4 1985

WARD TONSFALDT PHOTO

Negative on file at Oregon SHPO

34 of 55

HISTORIC PRESERVATION
OREGON STATE PARKS
525 Trade St. S.E.
Salem, Oregon 97310



Sumpter Valley Railway, Baker Co., OR
HISTORIC DISTRICT

Wreckage of trestle near eastern
terminus of nomination section four
1985

WA N TONS FALDT PHOTO
Negative on file at Oregon SHPO

35 of 55

HISTORIC PRESERVATION
OREGON STATE PARKS
525 Trade St. S.E.
Salem, Oregon 97310



Sumpter Valley Railway, Baker Co., OR
HISTORIC DISTRICT

First bent of Dean Creek trestle
1985

WARD TONSPALDT PHOTO

Negative on file at Oregon SHPO

36 of 55

HISTORIC PRESERVATION
OREGON STATE PARKS
525 Trade St. S.E.
Salem, Oregon 97310



Sumpter Valley Railway, Baker Co., OR
HISTORIC DISTRICT

Base of water tank near Dean Creek
crossing 1985

WAND TONSFIELDT PHOTO

Neagative on file at Oregon SHPO

37 of 55

HISTORIC PRESERVATION
OREGON STATE PARKS
525 Trade St. S.E.
Salem, Oregon 97310



Sumpter Valley Railway, Baker Co., OR
HISTORIC DISTRICT

Roadbed on fill north of Dean Creek
1985

WARD TRANSFERRED PHOTO
Negative at Oregon SHPO

38 of 55

HISTORIC PRESERVATION
OREGON STATE PARKS
525 Trade St. S.E.
Salem, Oregon 97310



Sumpter Valley Railway, Baker Co., OR
HISTORIC DISTRICT

Roadbed near western terminus of
nomination section four 1985

WAND TONSFALDT PHOTO
Negative at Oregon SHPO

39 of 55

HISTORIC PRESERVATION
OREGON STATE PARKS
525 Trade St. S.E.
Salem, Oregon 97310



Sumpter Valley Railway, Baker Co., OR
HISTORIC DISTRICT

Roadbed with ties near western
terminus of nomination section five
1985 *WIND TONSFALDT PHOTO*
Negative at Oregon SHPO

40 of 55

HISTORIC PRESERVATION
OREGON STATE PARKS
525 Trade St. S.E.
Salem, Oregon 97310



Sumpter Valley Railway, Baker Co., OR
HISTORIC DISTRICT

Runners from log chute sled, near
Trout Creek 1985

WAND TRANSPARENT PHOTO
Negative at Oregon SHPO

41 of 55

HISTORIC PRESERVATION
OREGON STATE PARKS
525 Trade St. S.E.
Salem, Oregon 97310



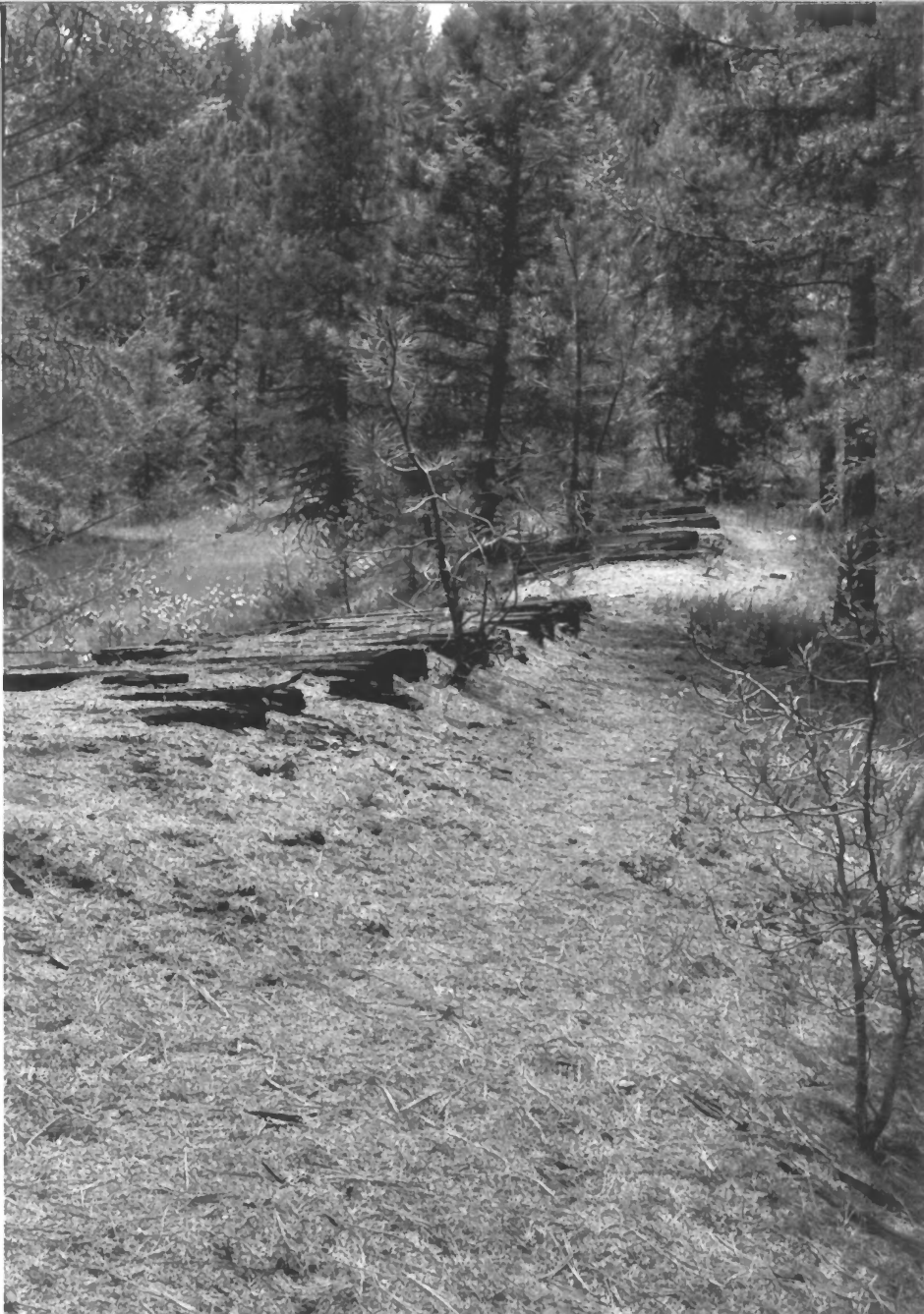
Sumpter Valley Railway, Baker Co., OR
HISTORIC DISTRICT

Horizontal or cribbed trestle on
Trour Creek 1985

WANN TONSPERLENT PHOTO
Negative at Oregon SHPO

42 of 55

HISTORIC PRESERVATION
OREGON STATE PARKS
525 Trade St. S.E.
Salem, Oregon 97310



Sumpter Valley Railway, Baker Co., OR
HISTORIC DISTRICT

Roadbed with ties near the eastern
terminus of nomination section
five 1985

WANN TONSPALDT PHOTO
Negative at Oregon SHPO

43 of 55

HISTORIC PRESERVATION
OREGON STATE PARKS
525 Trade St. S.E.
Salem, Oregon 97310



Sumpter Valley Railway, Grant Co., OR
HISTORIC DISTRICT

Roadbed approaching White Pine Mill
site, nomination section six
1985

WAND TONS FALNT PHOTO
Negative at Oregon SHPO

44 of 55

HISTORIC PRESERVATION
OREGON STATE PARKS
525 Trade St. S.E.
Salem, Oregon 97310



Sumpter Valley Railway, Grant Co., OR
HISTORIC DISTRICT

White Pine Mill site, 1985

WARD TONSFALDT PHOTO
Negative at Oregon SHPO

45 of 55

HISTORIC PRESERVATION
OREGON STATE PARKS
525 Trade St. S.E.
Salem, Oregon 97310



Sumpter Valley Railway, Baker Co., OR
HISTORIC DISTRICT

Whitney Mill site, 1985

WAND TONS PALNT PHOTO
Negative at Oregon SHPO

46 of 55

HISTORIC PRESERVATION
OREGON STATE PARKS
525 Trade St. S.E.
Salem, Oregon 97310



Sumpter Valley Railway, Baker Co., OR
HISTORIC DISTRICT

Main line trestle, possible Alder
Springs

n.d. *HISTORIC VIEW*

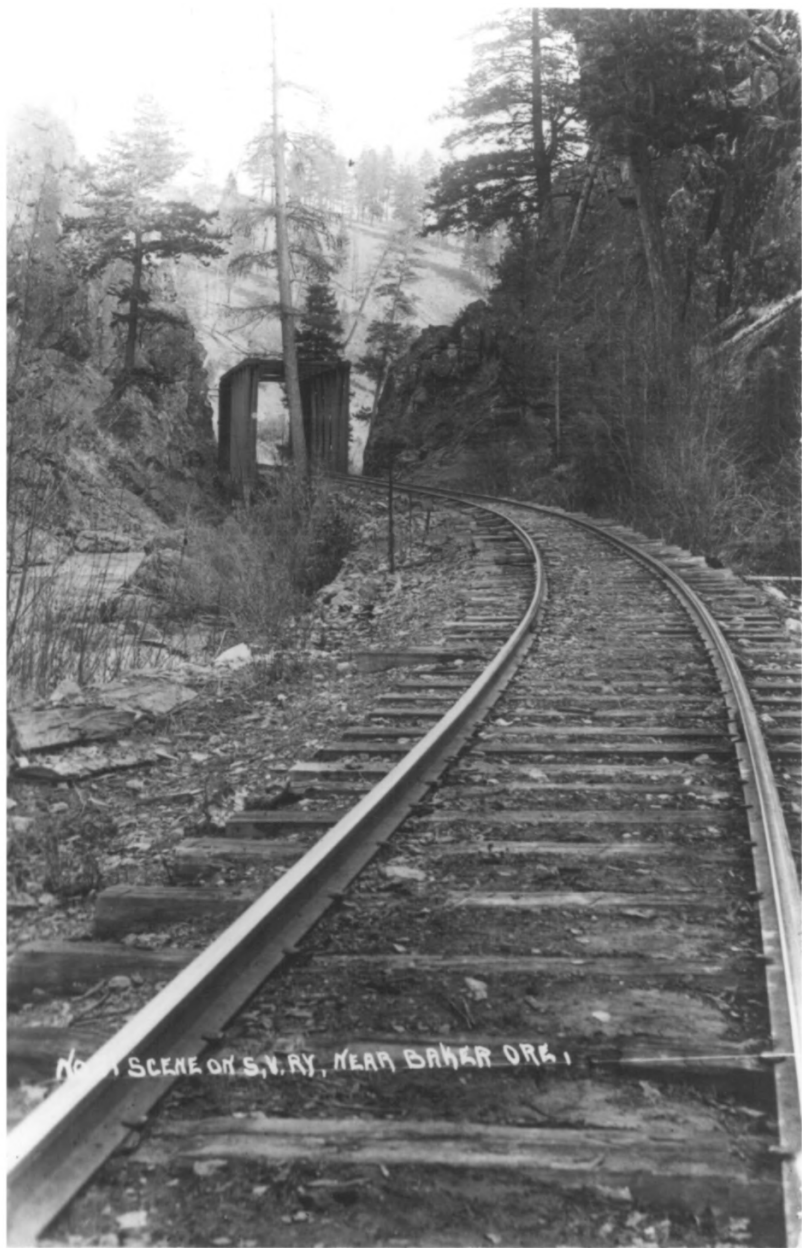
Negative #52643, OHS

47 of 55

*ON A GON HISTORICAL
SOCIETY*

1230 SW PARK AVENUE.

PORTLAND, OR 97205



NO. 1 SCENE ON S. V. RY, NEAR BAKER ORG.

Sumpter Valley Railway, Baker Co., OR
HISTORIC DISTRICT

Boulder Gorge crossing of the Powder
River above Salisbury

n.d. *HISTORIC VIEW*

Negative #65629 OHS

48 of 55

*ORAGON HISTORICAL SOCIETY
1230 SW PARK AVE.
PORTLAND, OR 97205*



Sumpter Valley Railway, Baker Co., OR
HISTORIC DISTRICT

Boulder Gorge crossing of the Powder
River above Salisbury

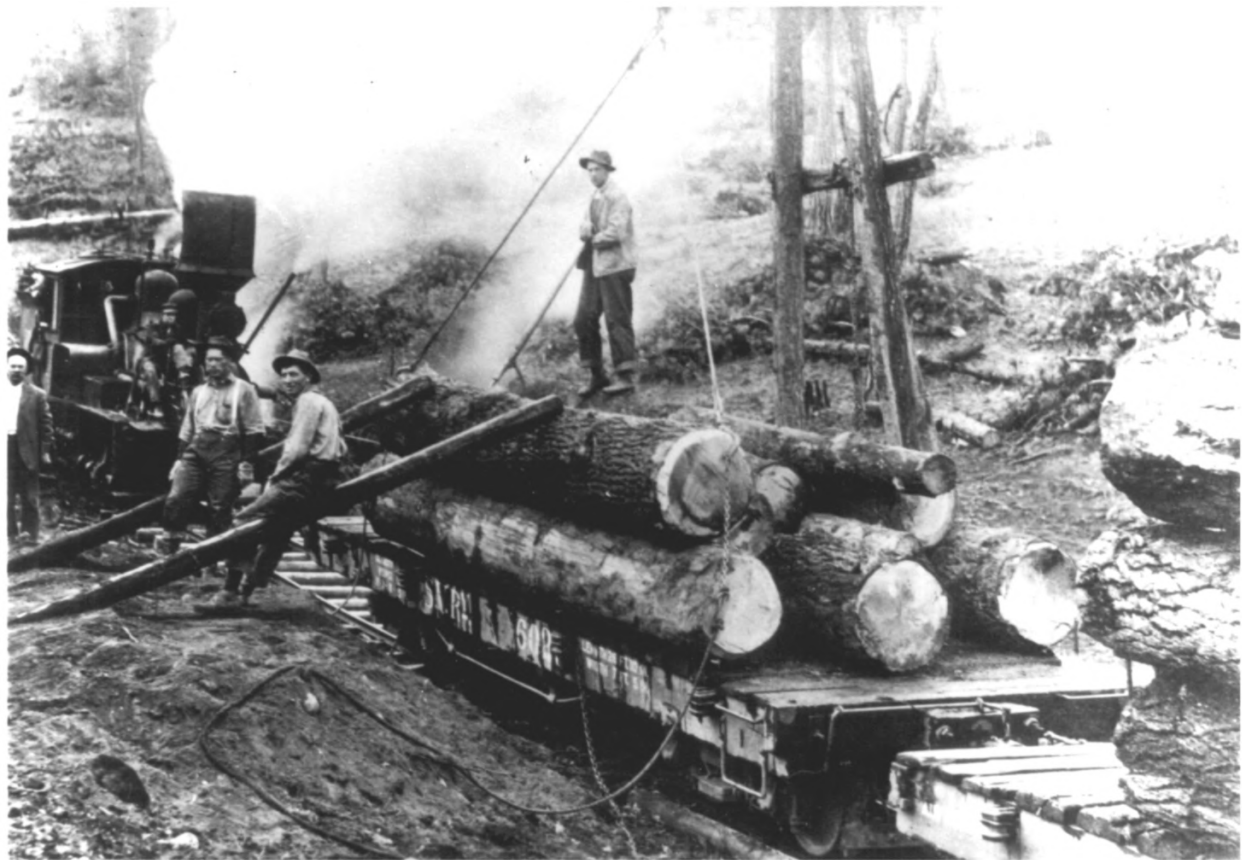
n.d. *HISTORIC VIEW*

Negative # 3832-b OHS

OREGON HISTORICAL SOCIETY

49 of 55

*1230 SW PARK AVENUE
PORTLAND, OR 97205*



Sumpter Valley Railway, Baker Co., OR
HISTORIC DISTRICT

Loading logs with A-frame and cross-haul method. Note end hooks in the log, winch mounted on front of Shay locomotive

n.d. *HISTORIC VIEW*

Negative #52645, OHS

50 of 55

*OREGON HISTORICAL SOCIETY
1230 SW PARK AVENUE
PORTLAND, OR 97205*



Sumpter Valley Railway, Baker Co., OR
HISTORIC DISTRICT

Loaded log cars

n.d. *HISTORIC VIEW*

Negative # 3834, OHS

51 of 55 *OREGON HISTORICAL SOCIETY*
1230 SW PARK AVENUE
PORTLAND, OR 97205



Sumpter Valley Railway, Baker Co., OR
HISTORIC DISTRICT

Passenger train at Tipton Station

n.d. *HISTORIC VIEW*

Negative # 3835, OHS

OREGON HISTORICAL SOCIETY
52 of 55 *1230 SW PARK AVENUE*
PORTLAND, OR 97205



Sumpter Valley Railway, Baker Co., OR
HISTORIC DISTRICT

Passenger train leaving Baker

n.d. *HISTORIC VIEW*

Negative # 3836, OHS

OREGON HISTORICAL SOCIETY
1230 SW PARK AVENUE
PORTLAND, OR 97205

53 of 55



Sumpter Valley Railway, Baker Co., OR
HISTORIC DISTRICT

Oregon Lumber Company mill in
Baker

n.d. *HISTORIC VIEW*

Negative #5132. OHS

54 of 55

*OREGON HISTORICAL SOCIETY
1230 SW PARK AVENUE
PORTLAND, OR 97205*



NO. 52 WHITE PINE MILL NEAR CAMAS, OR.

Sumpter Valley Railway, Grant Co., OR
HISTORIC DISTRICT

White Pine mill, looking west to
White Pine Station

n.d. *HISTORIC VIEW*

Negative #56676, OHS

55 of 55

*OREGON HISTORICAL SOCIETY
1230 SW PARK AVENUE
PORTLAND, OR 97205*

MAY 27 1987