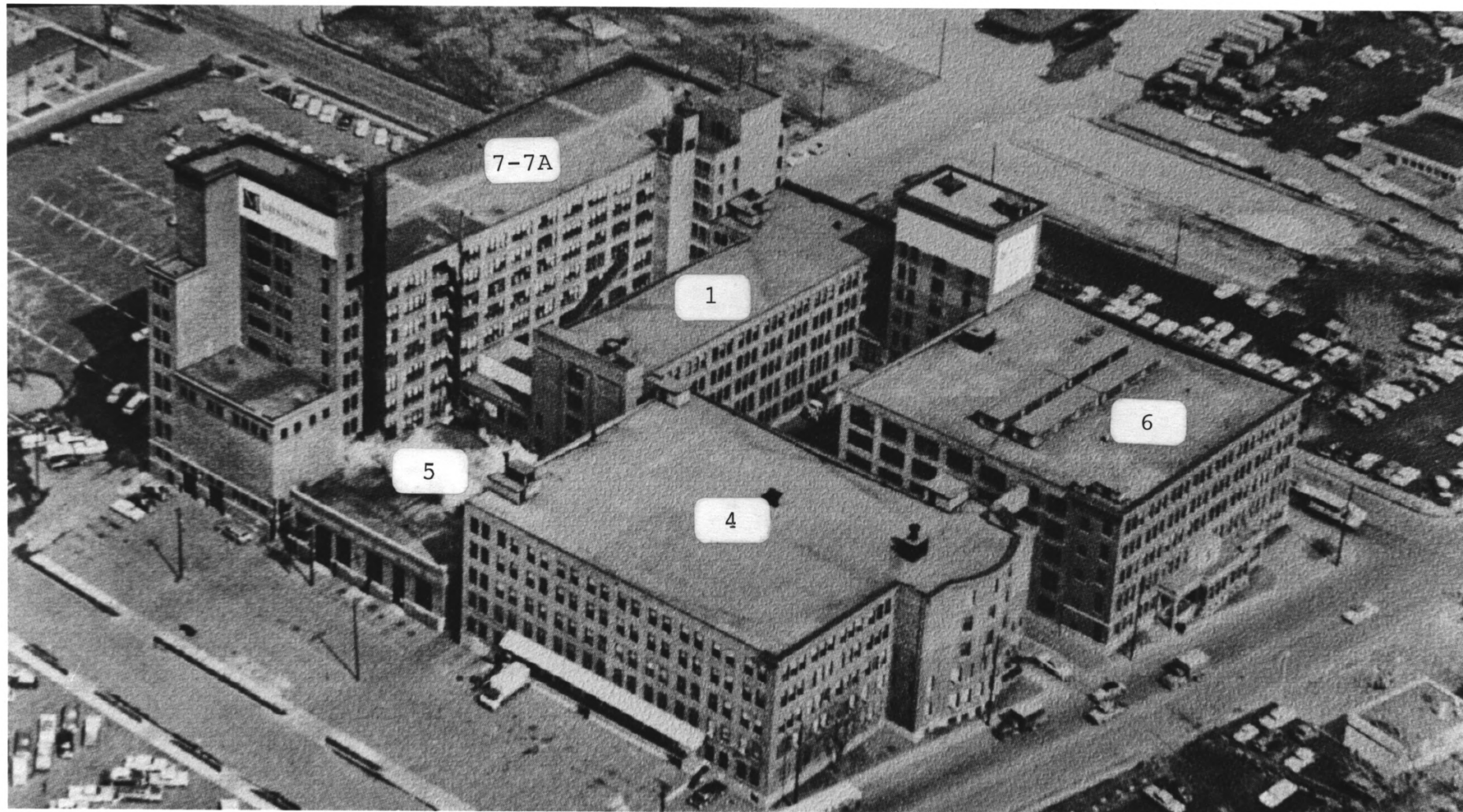


Munsingwear Plant, 1960.
Looking northeast.

Munsingwear Annual Report, 1960.



LDW 178 STATE ST CHIC
Exclusive Cloak and Fur

Munsingwear Union Suit.
Ladies' Home Journal, Oct. 1897.

THE MUNSING

PLATED UNDERWEAR

for WOMEN
MISSES
CHILDREN
and MEN

THIS fabric—one cotton strand between two of wool—insures wear, appearance and shape. The **elastic flat seam** gives all the advantages of full-fashioned garments, at

POPULAR PRICES

Ask your dealer for our free **Booklet** showing styles **photographed on living models**, or address



The Northwestern Knitting Co., MINNEAPOLIS, MINN.

"The Shoe Specialists"

PLATE 4

Munsingwear women's sleepwear,
using synthetic fibers, c. 1922.
Munsingwear Papers,
Minnesota Historical Society.



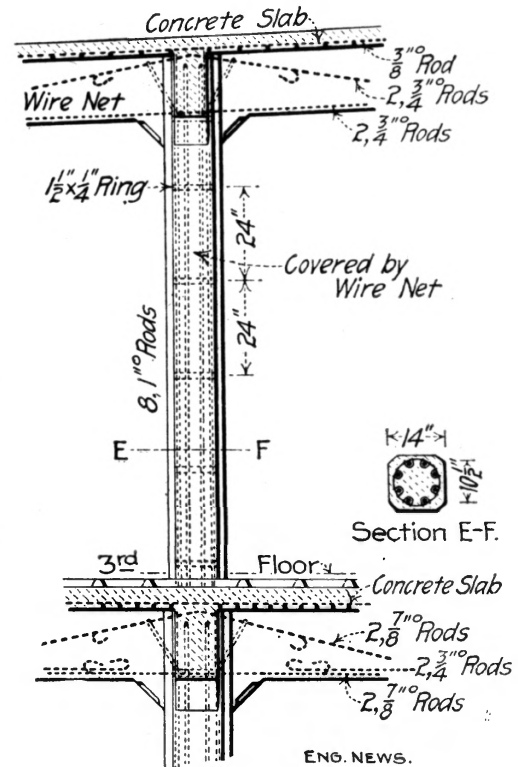
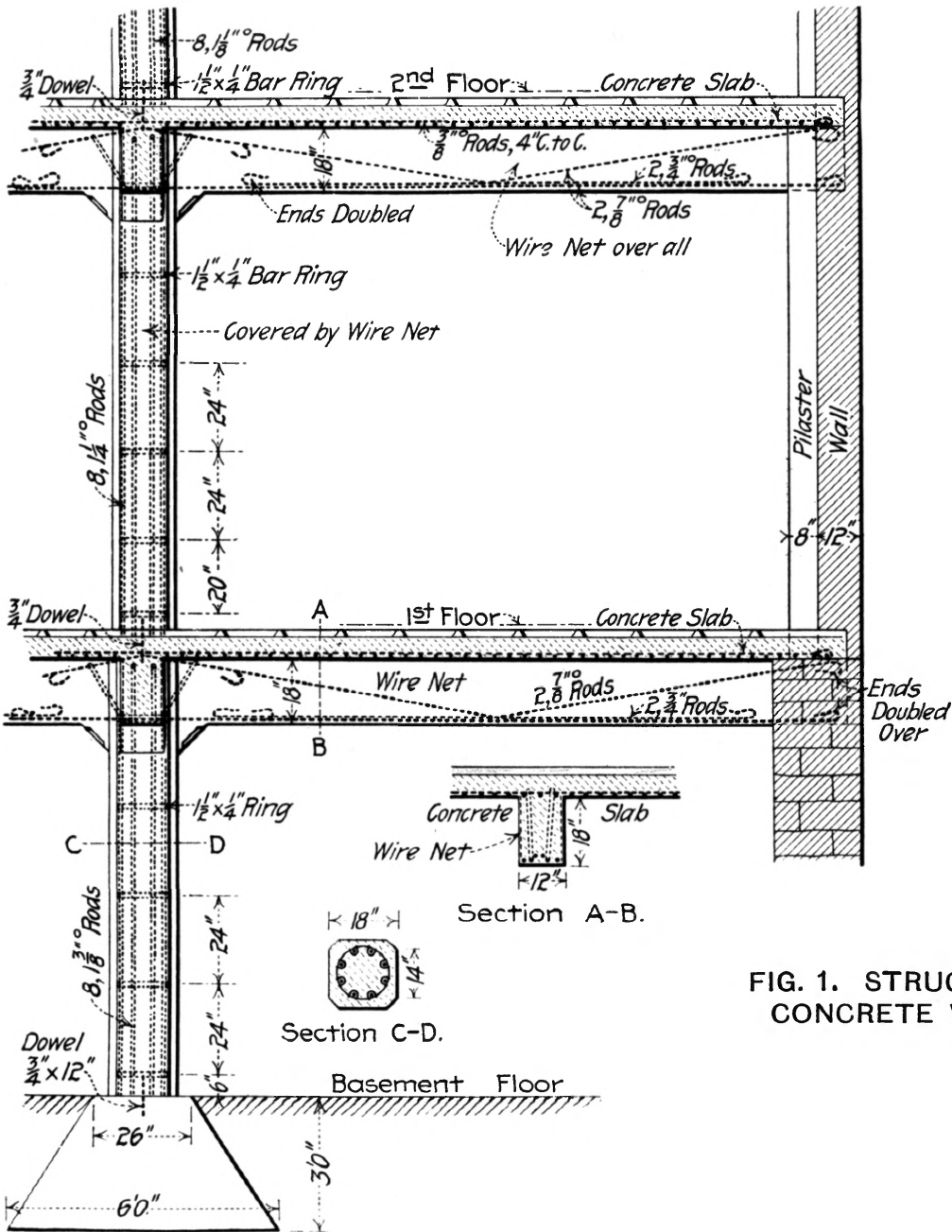
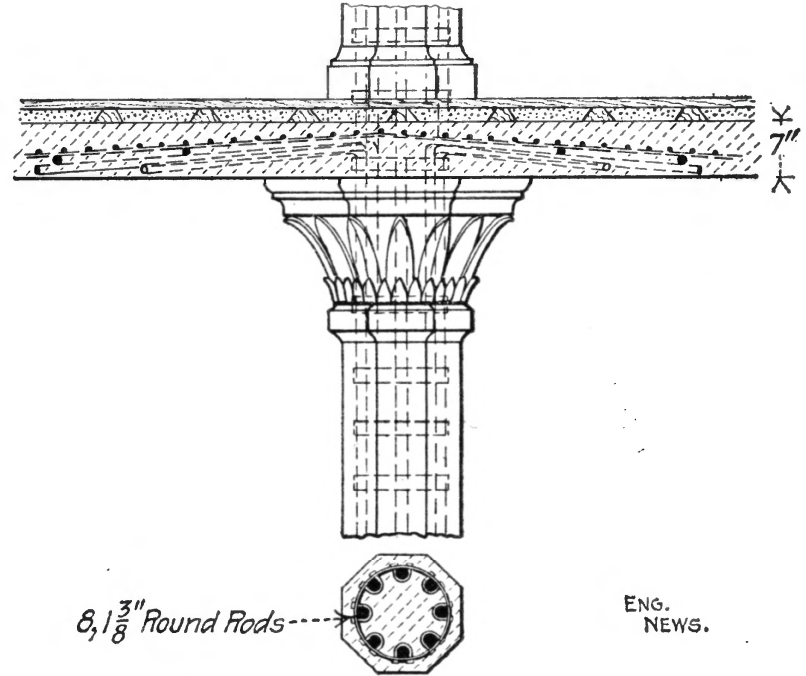
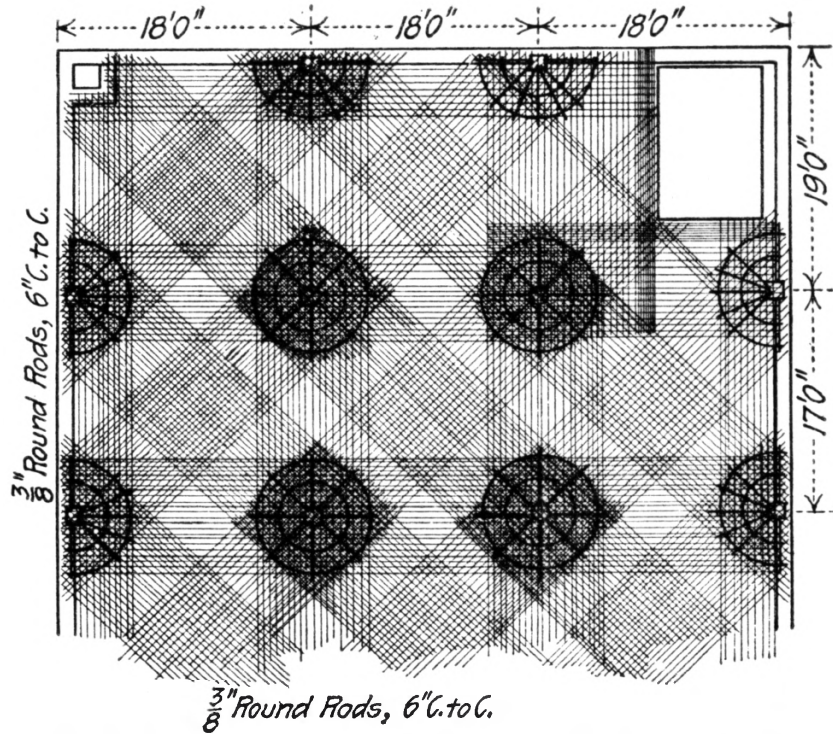


FIG. 1. STRUCTURAL DETAILS OF REINFORCED
 CONCRETE WAREHOUSE, AT MINNEAPOLIS,
 MINN.

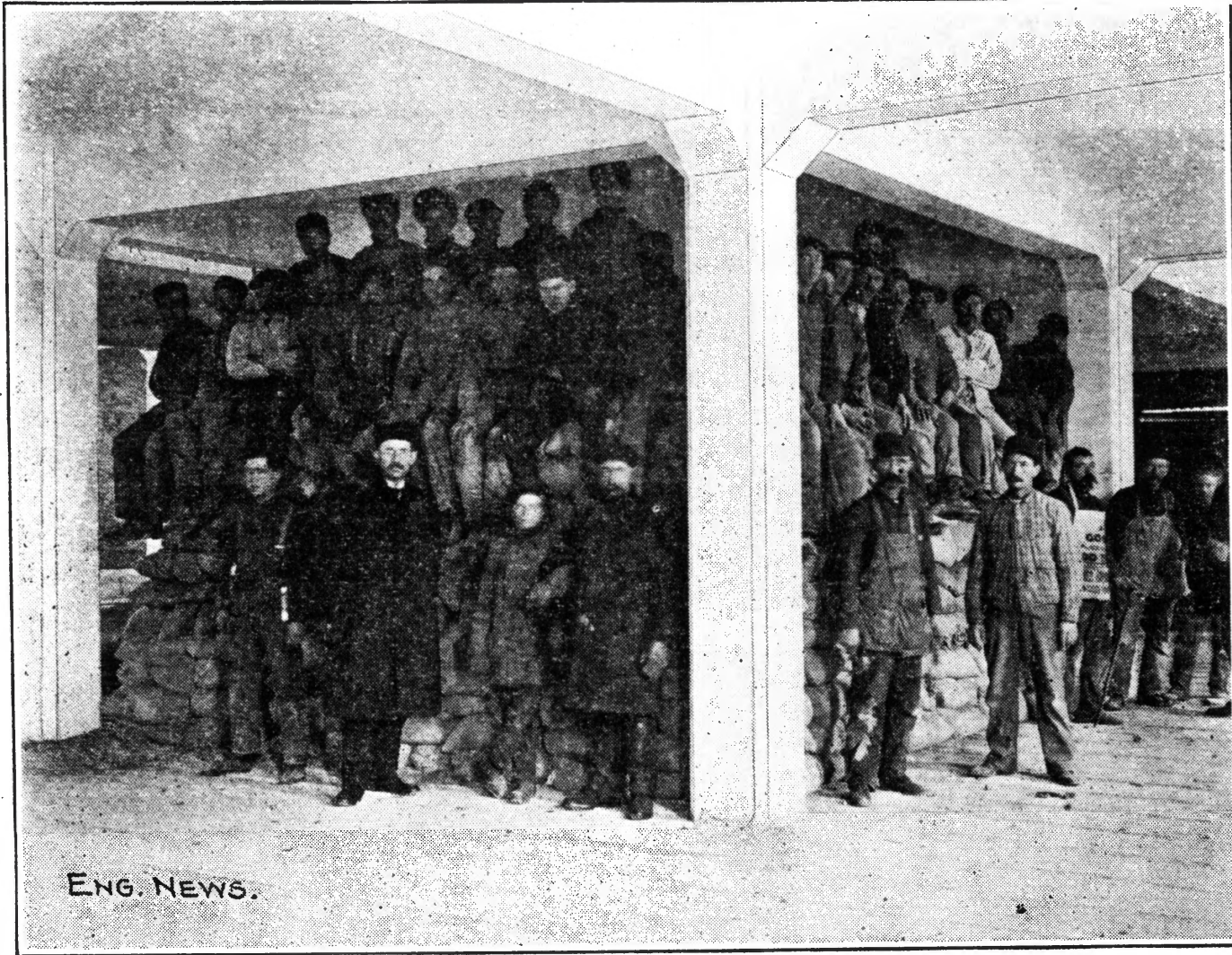


ENG.
 NEWS.

Partial Plan showing Floor Reinforcement.

Sectional Elevation.

FIG. 3. "MUSHROOM" SYSTEM OF CONCRETE REINFORCEMENT PROPOSED BY C. A. P. TURNER.



A 100-TON TEST LOAD ON A REINFORCED CONCRETE FLOOR
PANEL OF THE NORTHWEST KNITTING WORKS BUILDING,
MINNEAPOLIS, MINN.; SIZE OF PANEL: 16 FT. 8 INS. X 15 FT.
8 INS. DEFLECTION OF BEAMS, 1-16 IN.

PLATE 8

Munsingwear Plant, Building 4, 1983.
Interior view of 1904-construction.
Second floor.



Munsingwear Plant, Building 4, 1983.
Interior view of 1912-construction.
Second floor.



PLATE 10

Munsingwear Plant, Dec. 1983.

Looking east. *west*

Roger Vancore, Minneapolis.



PLATE 11

Munsingwear Plant, Dec. 1982.

Looking north.

Roger Vancore, Minneapolis.



PLATE 12
Munsingwear Plant, Dec. 1982
Looking northwest
Roger Vancore, Minneapolis.



PLATE 13

Munsingwear Plant, Dec. 1982.
Looking south.
Roger Vancore, Minneapolis.

