



UNITED STATES DEPARTMENT OF THE INTERIOR
NATIONAL PARK SERVICE

**NATIONAL REGISTER OF HISTORIC PLACES
PROPERTY PHOTOGRAPH FORM**

(Type all entries - attach to or enclose with photograph)

1. NAME

COMMON

AND/OR HISTORIC

NUMERIC CODE *(Assigned by NPS)*

The Lithgow Library

23/011

JUL 24 1974

2. LOCATION

STATE

COUNTY

TOWN

Maine

Kennebec

Augusta

STREET AND NUMBER

Winthrop Street

3. PHOTO REFERENCE

PHOTO CREDIT

DATE

NEGATIVE FILED AT

R. D. Kelly

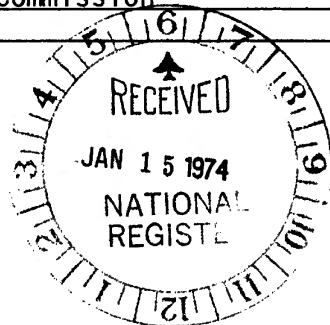
Nov-7, 1973

Maine Historic Preservation
Commission

4. IDENTIFICATION

DESCRIBE VIEW, DIRECTION, ETC.

#1 View towards the north





UNITED STATES DEPARTMENT OF THE INTERIOR
NATIONAL PARK SERVICE

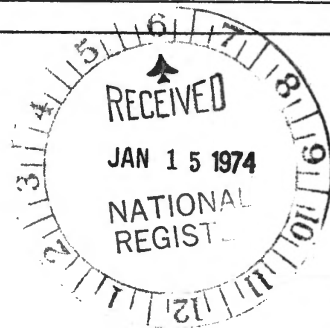
NATIONAL REGISTER OF HISTORIC PLACES
PROPERTY PHOTOGRAPH FORM

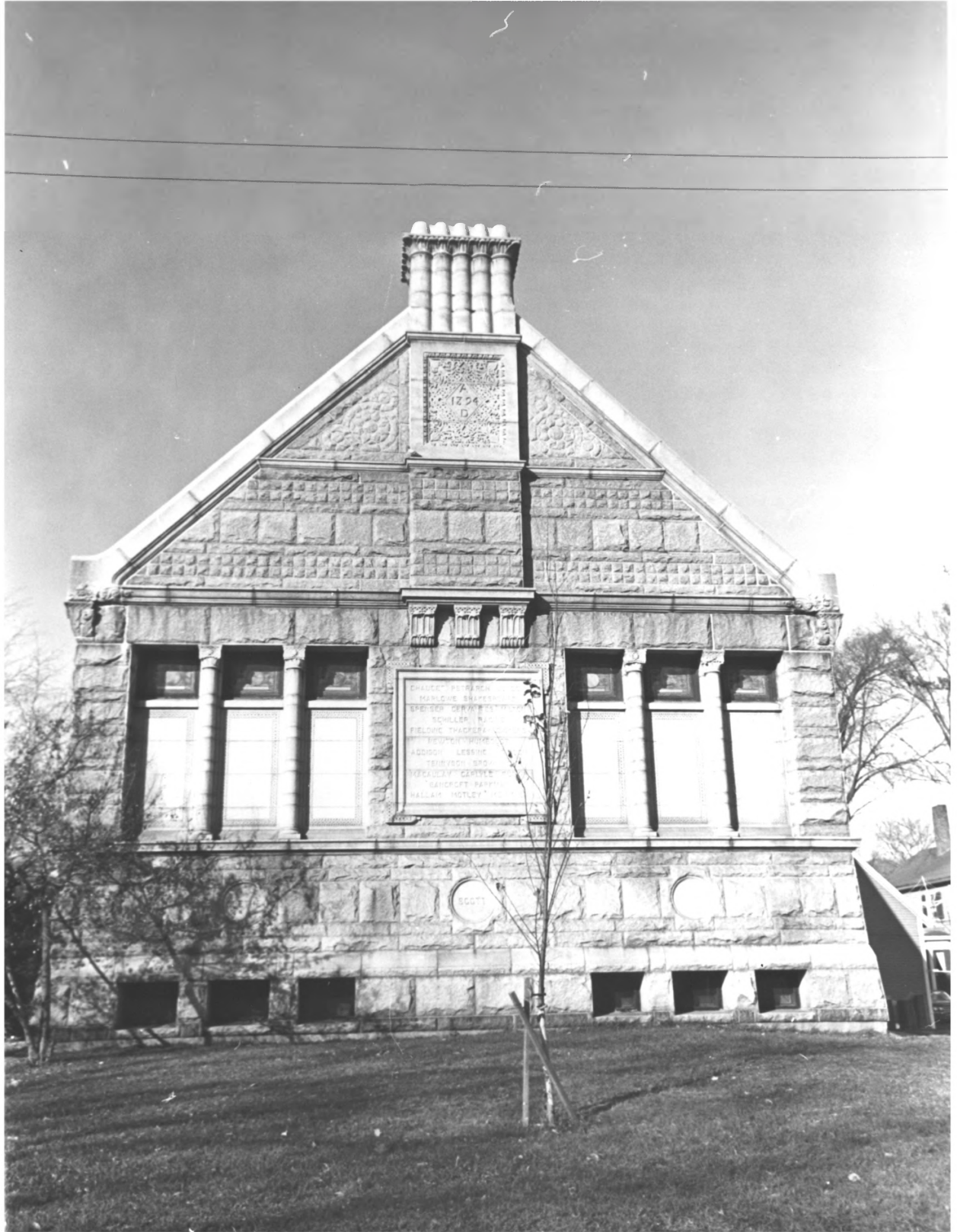
(Type all entries - attach to or enclose with photograph)

1. NAME		
COMMON	AND/OR HISTORIC	NUMERIC CODE (Assigned by NPS)
The Lithgow Library		23/011
2. LOCATION		
STATE	COUNTY	TOWN
Maine	Kennebec	Augusta
STREET AND NUMBER		
Winthrop Street		
3. PHOTO REFERENCE		
PHOTO CREDIT	DATE	NEGATIVE FILED AT
R. D. Kelly	Nov. 7, 1973	Maine Historic Preservation Commission

4. IDENTIFICATION
DESCRIBE VIEW, DIRECTION, ETC.

#2 View towards the northeast





1294

CHARLES FLETCHER
MARLOWE BRADSHAW
EPHRAIM CURRIER
SCHLESER RAY
FIELDING THACKERAY
"FREDERICK" BROWN
ADDISON LESSLIE
"TERENCE" DICK
"FRANCIS" GERTNER
"HARROLD" BARTON
HALLAM HOLLEY

SCOTT

UNITED STATES DEPARTMENT OF THE INTERIOR
NATIONAL PARK SERVICE

NATIONAL REGISTER OF HISTORIC PLACES
PROPERTY PHOTOGRAPH FORM

(Type all entries - attach to or enclose with photograph)

1. NAME

COMMON

The Lithgow Library

AND/OR HISTORIC

NUMERIC CODE (Assigned by NPS)

23/011

JUL 24 1974

2. LOCATION

STATE

Maine

COUNTY

Kennebec

TOWN

Augusta

STREET AND NUMBER

Winthrop Street

3. PHOTO REFERENCE

PHOTO CREDIT

R. D. Kelly

DATE

Nov. 7, 1973

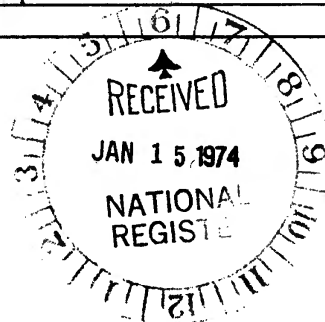
NEGATIVE FILED AT

Maine Historic Preservation
Commission

4. IDENTIFICATION

DESCRIBE VIEW, DIRECTION, ETC.

#3 View towards the west.





Stigmaria

ME