



- ① Frederick Riddle House, Riddle Ranch Historic District
- ② T33S, R32 3/4 E, Sec. 30, SW 1/4 SE 1/4, W.M.,
Harney County, OR.
- ③ Stephen Dow Beckham
- ④ 17 June 1987
- ⑤ BLM, Burns District Office, Hines, OR.
- ⑥ View: northwest; east (side) and south (front) elevations
- ⑦ Photograph No. 1 [Neg. No. Beckham-15]: Schematic Location Map, # 1



- ① Frederick Riddle House, Riddle Ranch Historic District
- ② T33S, R32 3/4E, Sec. 30, SW 1/4 SE 1/4, W.M.,
Harney County, Oregon
- ③ Stephen Daw Beckham
- ④ 17 June 1987
- ⑤ BLM, Burns District Office, Hines, Oregon
- ⑥ View: Northeast; west (side) and south (front) elevations
- ⑦ Photograph No. 2 [Neg. No. Beckham-18]: Schematic Location Map, #1



- ① Frederick Riddle Cooler, Riddle Ranch Historic District
- ② T33S, R32 314E, Sec. 30, SW $\frac{1}{4}$ SE $\frac{1}{4}$, W.M.,
Harney County, Oregon
- ③ Stephen Dow Beckham
- ④ 17 June 1987
- ⑤ BLM, Burns District Office, Haines, Oregon
- ⑥ View: north; south (front) elevation
- ⑦ Photograph No. 3 [Neg. No. Beckham-21]: Schematic Location Map, # 2



- ① Frederick Riddle Bunkhouse, Riddle Ranch Historic District
- ② T33S, R32 3/4E, Sec. 30, SW 1/4 SE 1/4, W.M., Harney Co., Ore.
- ③ Stephen Dow Beckham
- ④ 17 June 1987
- ⑤ BLM, Burns District Office, Hines, Oregon.

- ⑥ View: northeast; West (side) and South (front) elevations

- ⑦ Photograph No. 4 [Neg. No. Beckham-19]: Schematic location map, # 3



- ① Frederick Riddle Chicken House, Riddle Ranch Historic District
- ② T33S, R32 3/4E, Sec. 30, SW 1/4 SE 1/4, W.M., Harney Co., Ore.
- ③ Stephen Dow Beckham
- ④ 17 June 1987
- ⑤ BLM, Burns District Office, Hines, Oregon

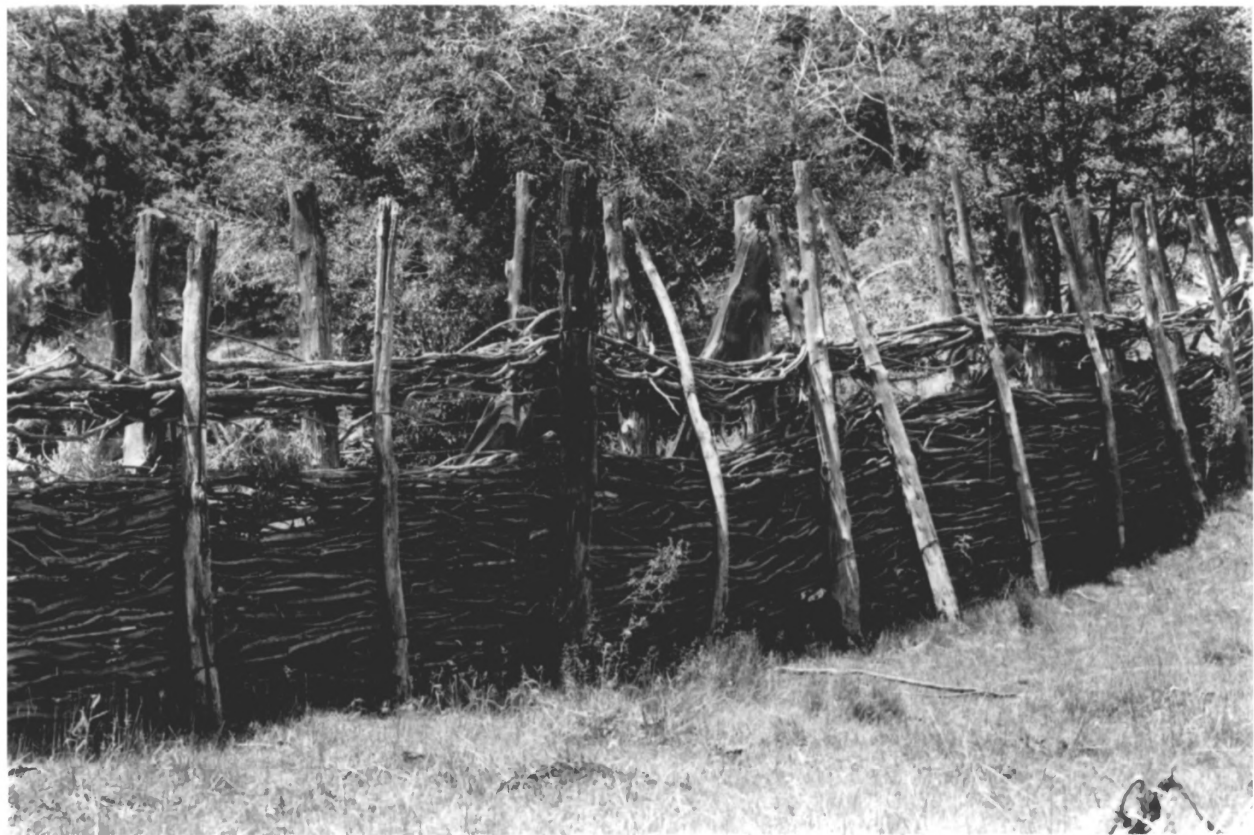
- ⑥ View: north; south (front) elevation
- ⑦ Photograph No. 5 [Neg. No. Beckham-22]: Schematic Location Map, # 4



- ① Frederick Riddle Storage Building - Tack Room, Riddle Ranch Historic District
- ② T33S, R 32 3/4E, Sec. 30, SE 1/4SW 1/4, W.M., Harney Co., Ore.
- ③ Stephen Dow Beckham
- ④ 17 June 1987
- ⑤ BLM, Burns District Office, Hines, Oregon
- ⑥ View: northwest; east (side) and south (front) elevations
- ⑦ Photograph No. 6 [Neg. No. Beckham - 1] : Schematic Location Map, # 5



- ① Barn, Riddle Ranch Historic District
- ② T33S, R 32 $\frac{3}{4}$ E, Sec. 30, SE $\frac{1}{4}$ SW $\frac{1}{4}$, W.M., Harney Co., OR.
- ③ Stephen Dow Beckham
- ④ 17 June 1987
- ⑤ BLM, Burns District Office, Hines, OR.
- ⑥ View to northeast : South (front) and west (side) elevations
- ⑦ Photograph No. 7 [Neg. No. Beckham-6] : Schematic Location Map, #6



- ① Frederick Riddle Willow Pole Corral, Riddle Ranch Historic District
- ② T33S, R32 3/4 E, Sec. 30, SE 1/4 SW 1/4, W.M., Harney Co., Ore.
- ③ Stephen Dow Beckham
- ④ 17 June 1989
- ⑤ BLM, Burns District Office, Hines, Oregon

- ⑥ View: West; West wall
- ⑦ Photograph No. 8 (Neg. No. Beckham-14): Schematic Location Map, # 7



- ① Frederick Riddle Juniper Post Corral, Riddle Ranch Historic District
- ② T. 33 S., R. 32 $\frac{3}{4}$ E., Sec. 30, SE $\frac{1}{4}$ SW $\frac{1}{4}$, W.M., Harney County, OR.
- ③ Stephen Dow Beckham
- ④ 17 June 1987
- ⑤ BLM, Burns District Office, Hines, Oregon
- ⑥ View to northeast: East Wall
- ⑦ Photograph No. 9 [Neg. No. Beckham-16]: Schematic Location Map, #7



- ① Benjamin A. Riddle House, Riddle Ranch Historic District
- ② T.33S., R. 32³/₄ E., Sec. 32, NW¹/₄ SW¹/₄, W. m.; Harney County, Oregon
- ③ Bruce Marc Crespin
- ④ October 1987
- ⑤ BLM, Burns District Office, Hines, OR.
- ⑥ View to west: East (front) elevation
- ⑦ Photograph No. 10 [Neg. No. Crespin-22]: Schematic Location Map, # 9



- ① Benjamin A. Riddle House, Riddle Ranch Historic District
- ② T. 33 S., R. 32 $\frac{3}{4}$ E., Sec. 32, NW $\frac{1}{4}$ SW $\frac{1}{4}$, W.M.; Harney County, Oregon
- ③ Bruce Marc Crespin
- ④ October 1987
- ⑤ BLM, Burns District Office, Hines, Oregon
- ⑥ View to northeast: South (side) and west (rear) elevations.
- ⑦ Photograph No. 11 [Neg. No. Crespin-18]: Schematic Location Map, #9



- ① Benjamin A. Riddle Cooler, Riddle Ranch Historic District
- ② T. 33 S., R. 32 $\frac{3}{4}$ E., Sec. 32, NW $\frac{1}{4}$ SW $\frac{1}{4}$, W. M.; Harney County, Oregon
- ③ Bruce Marc Crespin
- ④ October 1987
- ⑤ BLM, Burns District Office, Hines, Oregon
- ⑥ View to northwest; substructure remnants
- ⑦ Photograph No. 12 [Neg. No. Crespin-23]: Schematic Location Map, # 10



- ① Benjamin A. Riddle Stone Building, Riddle Ranch Historic District
- ② T. 33 S., R. 32 ³/₄ E., Sec. 32, NW ¹/₄ SW ¹/₄, W.M.; Harney County, Oregon.
- ③ Bruce Marc Crespin
- ④ October 1987
- ⑤ BLM, Burns District Office, Hines, Oregon
- ⑥ View to east: West (side) elevation
- ⑦ Photograph No. 13 [Neg. No. Crespin-13]: Schematic Location Map, #11



- ① Walter S. Riddle House, Riddle Ranch Historic District
- ② T. 33 S., R. 32 $\frac{3}{4}$ E., Sec. 33, SW $\frac{1}{4}$ NE $\frac{1}{4}$, w.m.; Harney County, OR.
- ③ Bruce Marc Crespin
- ④ October 1987
- ⑤ BLM, Burns District Office, Hines, OR.
- ⑥ View to northeast: South (side) and west (front) elevations
- ⑦ Photograph No. 14 (Neg. No. Crespin-2): Schematic Location Map, # 12



- ① Walter S. Riddle House, Riddle Ranch Historic District
- ② T. 33 S., R. 32 $\frac{3}{4}$ E., Sec. 33, SW $\frac{1}{4}$ NE $\frac{1}{4}$, W. m. ; Harney County, OR.
- ③ Bruce Marc Crespin
- ④ October 1987
- ⑤ BLM, Burns District Office, Hines, OR.
- ⑥ View to northwest: South (side) and east (rear) elevations
- ⑦ Photograph No. 15 (Neg. No. Crespin-8): Schematic Location Map, # 12