

65



HABS No. PR-95-1

56



HABS No. PR-95-2

56

HISTORIC AMERICAN BUILDINGS SURVEY

INDEX TO PHOTOGRAPHS

FUERTE LA PRINCESSA

(Castillo De San Christobal, Fuerte La Princesa)
Blvd. Norzagaray, San Juan National Historic Site
San Juan
San Juan County
Puerto Rico

HABS No. PR-95

HABS
PR
7-SAJU,
57-

Jack E. Boucher, Photographer, January 1960

PR-95-1 LA PRINCESSA BATTERY VIEWED FROM SHORE.

PR-95-2 LA PRINCESSA BATTERY VIEWED FROM SOUTHWEST.







HISTORIC AMERICAN BUILDINGS SURVEY

INDEX TO PHOTOGRAPHS

EL ARSENAL, UNIDENTIFIED RUINS
Calle Arsenal
San Juan
San Juan County
Puerto Rico

HABS No. PR-99-E

HABS
PR
7-SAJU,
43E-

Jack E. Boucher, Photographer, January 1967

PR-99-E-1 WEST ELEVATION OF RUINS.

PR-99-E-2 WEST ELEVATION OF RUINS, DETAIL OF STAIRCASE IN INNER
COURTYARD.

PR-99-E-3 WEST ELEVATION OF RUINS, DETAIL OF IRON WINDOW GRATE.



13

FRABS No. PR-98-1

13

HISTORIC AMERICAN BUILDINGS SURVEY

INDEX TO PHOTOGRAPHS

OFFICERS QUARTERS

(Castillo De San Christobal, Officers Quarters)
San Juan National Historic Site
Boulevard Norzagaray
San Juan
San Juan County
Puerto Rico

HABS No. PR-98

HABS
PR
7-SAJU
49-

Jack E. Boucher, Photographer, January 1960

PR-98-1 MAIN COURT, THE BATH, EXTERIOR VIEW SHOWING A PILASTER, WALL
AND CORNICE OF OFFICERS QUARTERS.

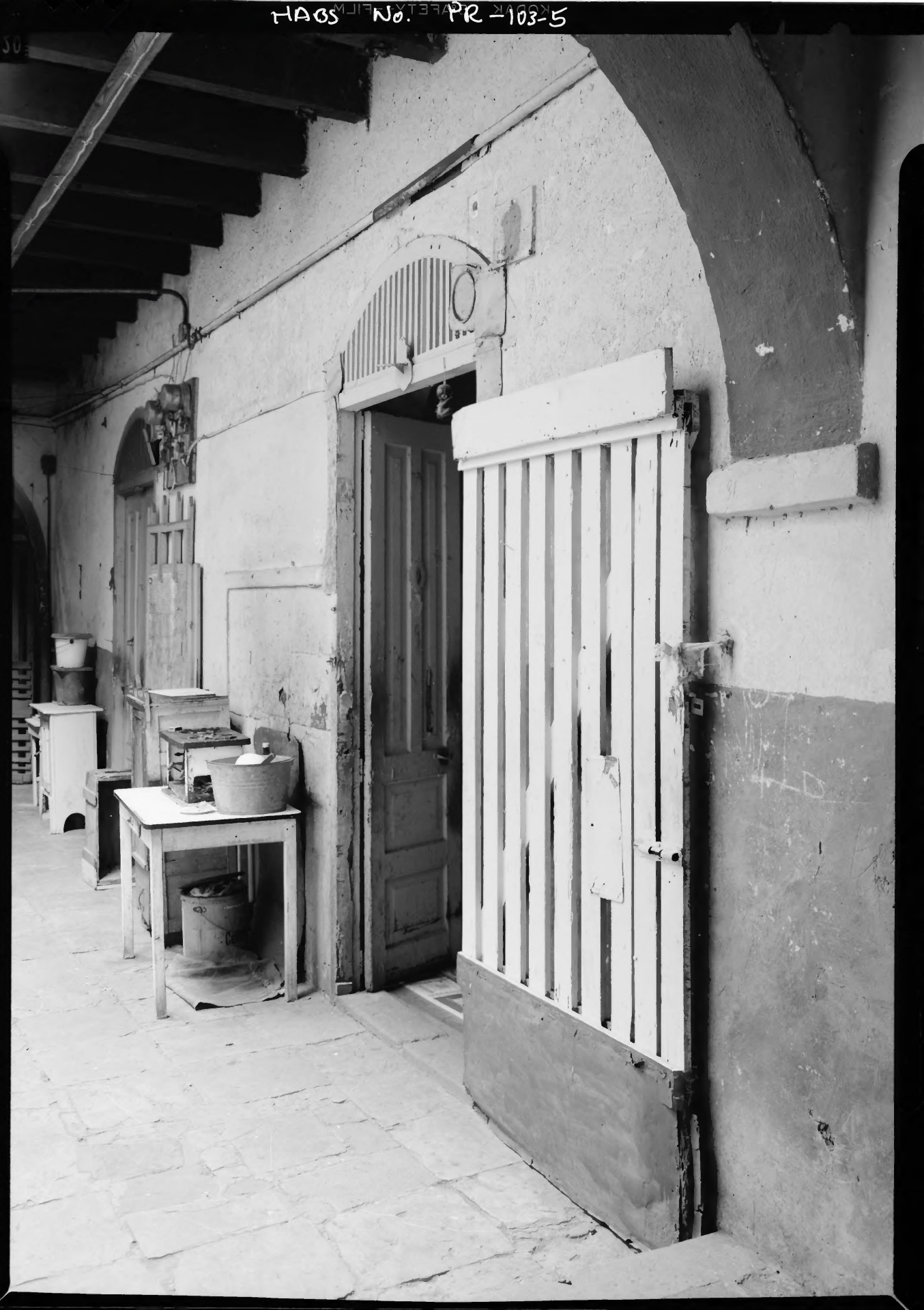


SE VENDEUMA
MOTO RAVEN



HABS No. PR-103-4





HABS No. PR-103-6





83 P.S.W.C.

472
TOWN OF SAULT

HISTORIC AMERICAN BUILDINGS SURVEY

INDEX TO PHOTOGRAPHS

106 Calle De La Cruz
106 Calle De La Cruz
San Juan
Puerto Rico

HABS No. PR-103

HABS
PR
7-SAJU,
55-

Jack E. Boucher, photographer, January 1967

- PR-103-1 East (front) elevation from southeast
- PR-103-2 East elevation, second floor balcony from northeast
- PR-103-3 East patio from the east
- PR-103-4 West patio
- PR-103-5 Typical first floor doorway of patio
- PR-103-6 Interior, stairhall, general view of staircase
- PR-103-7 Interior, newell post and stairrail



HABS No. PR-162-1



HABS No. PD-102-22



FIABS No. P2-102-3

HISTORIC AMERICAN BUILDINGS SURVEY

INDEX TO PHOTOGRAPHS

CISTERN HEADS

(Castillo De San Christobal, Cistern Heads)
San Juan National Historic Site
Boulevard Norzagaray
San Juan
San Juan
Puerto Rico

HABS No. PR-102

HABS
PR
7-SAJU
46-

Jack E. Boucher, photographer, January 1960

- PR-102-1 GENERAL VIEW OF EL CABARELLO LEVEL, INCLUDING STAIRHEAD, LOOKING
 SOUTH
- PR-102-2 DETAIL OF STAIRHEAD, DOOR AND ARCH ON EL CABARELLO
- PR-102-3 VIEW FROM EL CABARELLO TOWARDS EL MORRO IN DISTANCE

HABS No. PR-99-D-1







HAISS No. PR-99-D-3

HABS No. PR-99-D-4



HISTORIC AMERICAN BUILDINGS SURVEY

INDEX TO PHOTOGRAPHS

EL ARSENAL, NAVAL STOREHOUSES
Calle Arsenal
San Juan
San Juan County
Puerto Rico

HABS No. PR-99-D

HABS
PR
7-SAJU
43D-

Jack E. Boucher, Photographer, January 1967

- PR-99-D-1 NAVAL STOREHOUSES, ARCHED COLONNADE, WEST SIDE.
- PR-99-D-2 NAVAL STOREHOUSES, DETAIL ARCHED COLONNADE, WEST SIDE.
- PR-99-D-3 NAVAL STOREHOUSES, DETAIL OF CORNICE AND ROOF ORNAMENTATION.
- PR-99-D-4 INTERIOR, NAVAL STOREHOUSES, TRIANGULAR ROOM IN WEST WING SHOWING BRICK STOVE, (NOTE WOODEN LINTEL OVER DOOR).



HABS NO PR-94-81

516

51



HABS No. PR. 84-2

55

55



HABS No. PR. 94-3

HISTORIC AMERICAN BUILDINGS SURVEY

INDEX TO PHOTOGRAPHS

FUERTE EL ABANICO

(CASTILLO DE SAN CHRISTOBAL, FUERTE EL ABANICO)

Blvd. Norzagaray, San Juan National Historic Site

San Juan

San Juan County

Puerto Rico

HABS No. PR-94

HABS
PR
7-SAJU,
56-

Jack E. Boucher, Photographer, January 1960

- PR-94-1 EL ABANICO BATTERY VIEWED FROM TO OF GLACIS LOOKING WEST.
- PR-94-2 EL ABANICO BATTERY SOUTH MOAT, LOOKING EAST.
- PR-94-3 UPPER LEVEL OF EL ABANICO BATTERY, EAST TIP, VIEWED FROM
SOUTHWEST.



150

37

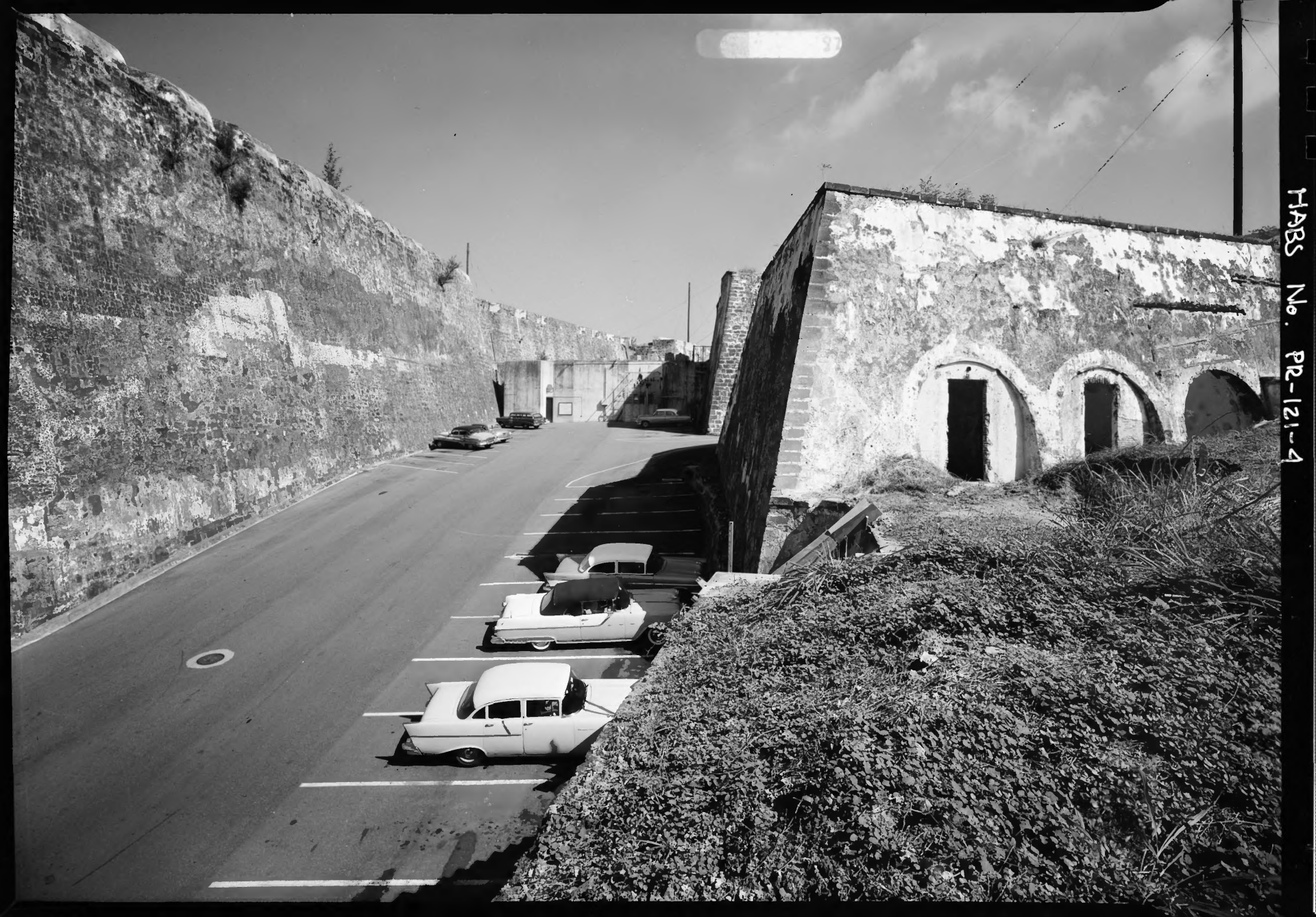
HABS No. P12-121-1



HAABS No. PR-121-2



HABS No. P2-121-3



HABS No. P2-121-4



HABS No. PR-121-5

HISTORIC AMERICAN BUILDINGS SURVEY

INDEX TO PHOTOGRAPHS

LA TRINIDAD COUNTERGUARD
(Castillo De San Christobal, La Trinidad Counterguard)
San Juan National Historic Site
San Juan
San Juan County
Puerto Rico

HABS No. PR-121

HABS
PR
7-SAJU,
59-

Jack E. Boucher, photographer, January 1960

- PR-121-1 MOAT EAST OF LA TRINIDAD COUNTERGUARD, VIEWED FROM GREAT MOAT,
LOOKING SOUTH
- PR-121-2 LA TRINIDAD COUNTERGUARD VIEWED FROM THE NORTHEAST AND SECOND
LEVEL FROM SAN CRISTOBAL
- PR-121-3 LOWER LEVEL OF LA TRINIDAD COUNTERGUARD FROM THE SOUTH
- PR-121-4 GREAT MOAT WITH CIVIL DEFENSE BUILDING FROM SOUTH TIP OF LA
TRINIDAD COUNTERGUARD, LOWER LEVEL
- PR-121-5 SOUTH TIP OF UPPER LA TRINIDAD COUNTERGUARD LOOKING NORTH
TOWARDS CIVIL DEFENSE BUILDING



HABS No. PR-99-G-1



HABS No. PR-99-C-2





← Peligro
AREA INFECTADA





HABS No. PR-99-C-6

HABS No. P2-99-C-7



HISTORIC AMERICAN BUILDINGS SURVEY

INDEX TO PHOTOGRAPHS

EL ARSENAL, FORMER QUARTERES OF
THE SPANISH NAVY
Calle Arsenal
San Juan
San Juan County
Puerto Rico

HABS No. PR-99-C

HABS
PR
7-SAJU,
43C-

Jack E. Boucher, Photographer, January 1967

- PR-99-C-1 FORMER QUARTERS OF THE SPANISH NAVY, WEST ELEVATION OF TWO STORY WING TO EAST OF PRINCIPAL COURTYARD.
- PR-99-C-2 FORMER QUARTERS OF THE SPANISH NAVY, BRICK WALL CONSTRUCTION DETAIL SHOWING ARCHES OF SOUTH WALL OF WEST WING OF ENTRANCE PORTICO.
- PR-99-C-3 FORMER QUARTERS OF THE SPANISH NAVY, INTERIOR, TRIANGULAR ROOM OF WEST WING.
- PR-99-C-4 FORMER QUARTERS OF THE SPANISH NAVY, INTERIOR, KEYHOLE DOORWAY.
- PR-99-C-5 FORMER QUARTERS OF THE SPANISH NAVY, INTERIOR, KEYHOLE ARCADE.
- PR-99-C-6 INTERIOR, FORMER QUARTERS OF THE SPANISH NAVY, LARGE ROOM WING TO WEST OF ENTRANCE PORTICO SHOWING BEAMED CEILING CONSTRUCTION.
- PR-99-C-7 INTERIOR, FORMER QUARTERS OF THE SPANISH NAVY, DETAIL OF THE UNDERSIDE OF BEAM AND BATTEN CEILING, WING TO WEST OF ENTRANCE PORTICO.































HABS No. HABS No. PR-47-16



PR.N.S. 36.12.30

0091272

49



HABS No. PR-47-17



HABS No. PR- A7-18



HABS No. PR-47-19



8

HABS No. - PR-47-20

47

47



HABS No. PR-47-21

HABS No. PR-47-22



354



HABS No. PR-41-28

33



HARBS No. PR-47-24

80

HABS No. PR-47-25



80a

HISTORIC AMERICAN BUILDINGS SURVEY

INDEX TO PHOTOGRAPHS

CASTILLO DE SAN CHRISTOBAL
(CASTILLO SAN JUAN)
(FORT SAN CHRISTOBAL)
Blvd. Norzagaray, San Juan National Historic Site
San Juan
San Juan County
Puerto Rico

HABS No. PR-47

HABS
PR
7-SAJU,
5-

ADDENDUM TO:
CASTILLO SAN JUAN
(FORT SAN CHRISTOBAL)
San Juan
Puerto Rico

Jack E. Boucher, Photographer, January 1960 (unless otherwise noted)

- PR-47-15 REPRODUCTION OF ARMY PHOTOGRAPH, AERIAL VIEW, LOOKING NORTH, SHOWING WESTERN END OF FORT (OFFICERS QUARTERS, TROOPS QUARTERS, SAN CHRISTOBAL, LA TRINIDAD AND SAN CARLOS). PHOTOGRAPHER AND DATE UNKNOWN.
- PR-47-16 REPRODUCTION OF ARMY PHOTOGRAPH, AERIAL VIEW, LOOKING WEST, SHOWING WESTERN END OF FORT (OFFICERS QUARTERS, TROOPS QUARTERS, SAN CHRISTOBAL). PHOTOGRAPHER AND DATE UNKNOWN.
- PR-47-17 VIEW FROM DIRECTLY EAST OF SAN CARLOS LOOKING WEST TOWARDS TRINIDAD BASTION AND SAN CARLOS IN FOREGROUND.
- PR-47-18 VIEW OF GREAT MOAT SOUTH SIDE OF SAN CARLOS RAVELIN LOOKING WEST.
- PR-47-19 VIEW OF SAN CARLOS RAVELIN INCLUDING MOAT AND GREAT WALL, TAKEN FROM NORTHEAST POINT OF 2ND LEVEL.
- PR-47-20 VIEW FROM SOUTHWEST OF SAN CHRISTOBAL.
- PR-47-21 VIEW OF GREAT MOAT NORTH OF SAN CARLOS RAVELIN LOOKING BACK TOWARDS EL CABALLERO.
- PR-47-22 DETAIL OF SENTRY BOX, NORTHEAST POINT OF SECOND LEVEL OF SAN CHRISTOBAL, LOOKING FROM MOAT TOWARDS WEST.
- PR-47-23 DETAIL OF SENTRY BOX, NORTHEAST POINT OF SECOND LEVEL OF SAN CHRISTOBAL, LOOKING NORTHEAST.

CASTILLO DE SAN CHRISTOBAL

HABS No. PR-47

(Page 2)

PR-47-24 **VIEW OF SECOND LEVEL OF SAN CHRISTOBAL, FROM NORTHEAST POINT.**

PR-47-25 **CONCRETE BUNKER OF SAN CHRISTOBAL, WITH EL MORRO IN DISTANCE.**















>

>





Q 87-99 . ON 2844



FORTRESS OF
SAN FELIPE DEL MORRO
A UNIT OF
SAN JUAN NATIONAL HISTORIC SITE
U.S. DEPARTMENT OF THE INTERIOR
BUREAU OF LAND MANAGEMENT
SAN JUAN, PUERTO RICO



HABS No. PR-48 - 11



HABS No. PR-48-12





HABS No. PR-48-13



HABS No. PR-48-14

457



HABS No. PR-48-15



01-82-59 .PM 824H





FIABS No. PR-48-10

56



HABS No. PR-48-12



HABS No. PR-48-20



HABS No. PR-48-21



HAPS No. PR-48-22



HAAS No. PD-48-23

34



HABS No. PR 48-24



46

HABS No. PR-48-25



HABS No. PR-48-12



HHHS No. PR-48-27

59



PLABS No. PR-48-2

6-



HASS No. PR-48-29



6

HABS No. P2-48-20



HABS No. P2-48-31



HABS No. PR-48-32



HABS No. P12-48-33

HABS No. PR-46-34



HABS No. PR-48-35



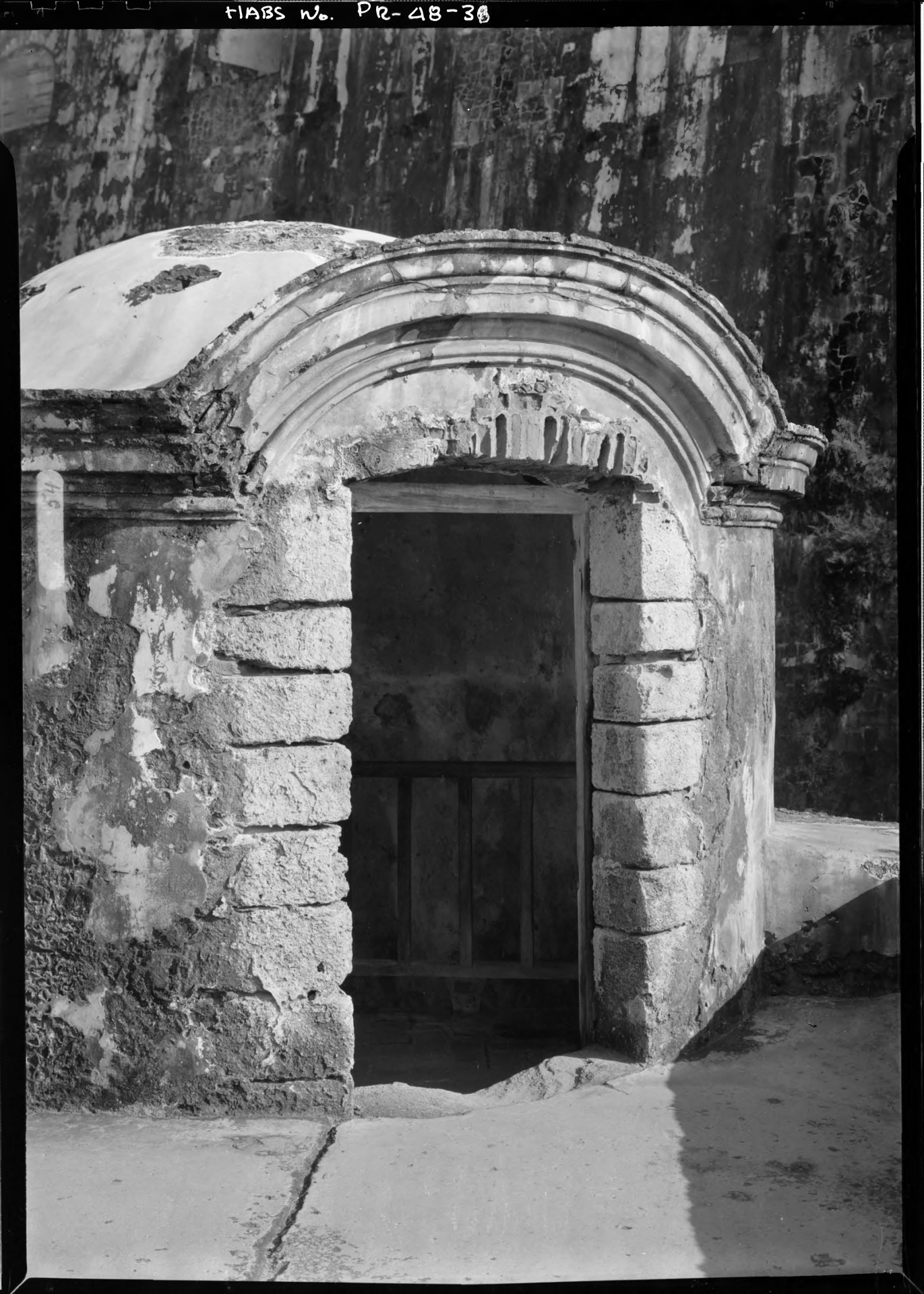


79

HABS No. PR-48-36

HABS No. PR-48-37





HABS No. PR-48-30

41







73

50
FT

HABS No. PR-48-41



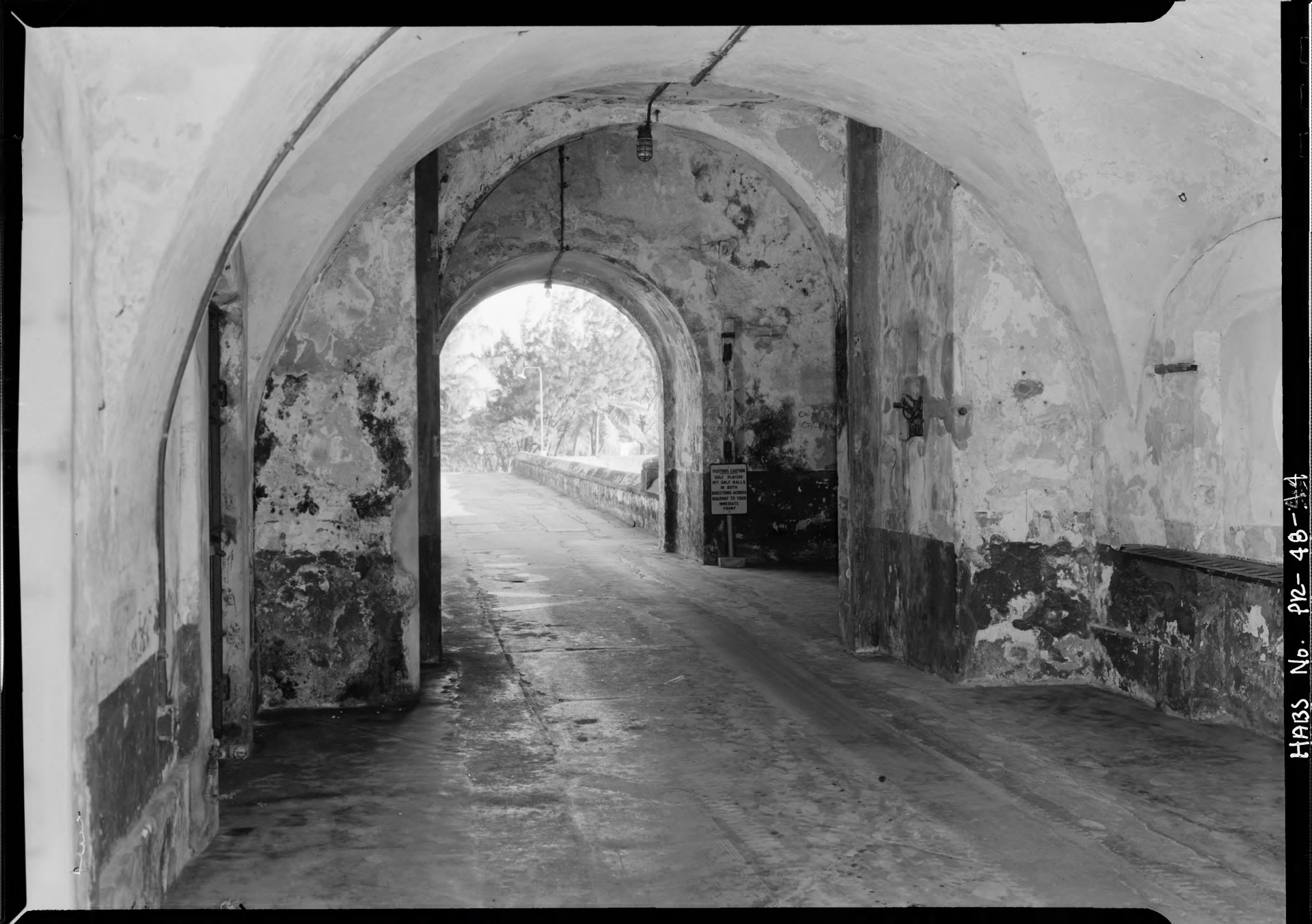
48



VISITORS CAUTION
GOLF PLAYERS
HIT GOLF BALLS
IN BOTH
DIRECTIONS ACROSS
ROADWAY TO YOUR
IMMEDIATE
FRONT

CAMP
CARMEN

HABS No. P2-48-13



HISTORIC CAMPUS
ONLY PLAYERS
OF THE BALL
IN BOTH
DIRECTION SHOULD
REMAIN TO THE
REAR OF
FRONT

HABS No. PR- 48-44



SAN FELIPE DEL MORRO

HABS No. PL-48-45



HABS No. P2-48-46

HABS No. PR-48-47







LIAS No. PR-48-4D



85



HABS No. PR-48-52



HABS No. P12-48-52



50
FT

HABS No. PR-48-54



33

HABS No. PR-48-55

HABS No. P12-48-50



HABS No. PR-48-57





FIABS No. P12-48-58

17ABS No. PR-48-53



HABS No. PR-48-60



HABS No. PR-48-61



HABS No. P2-48-62

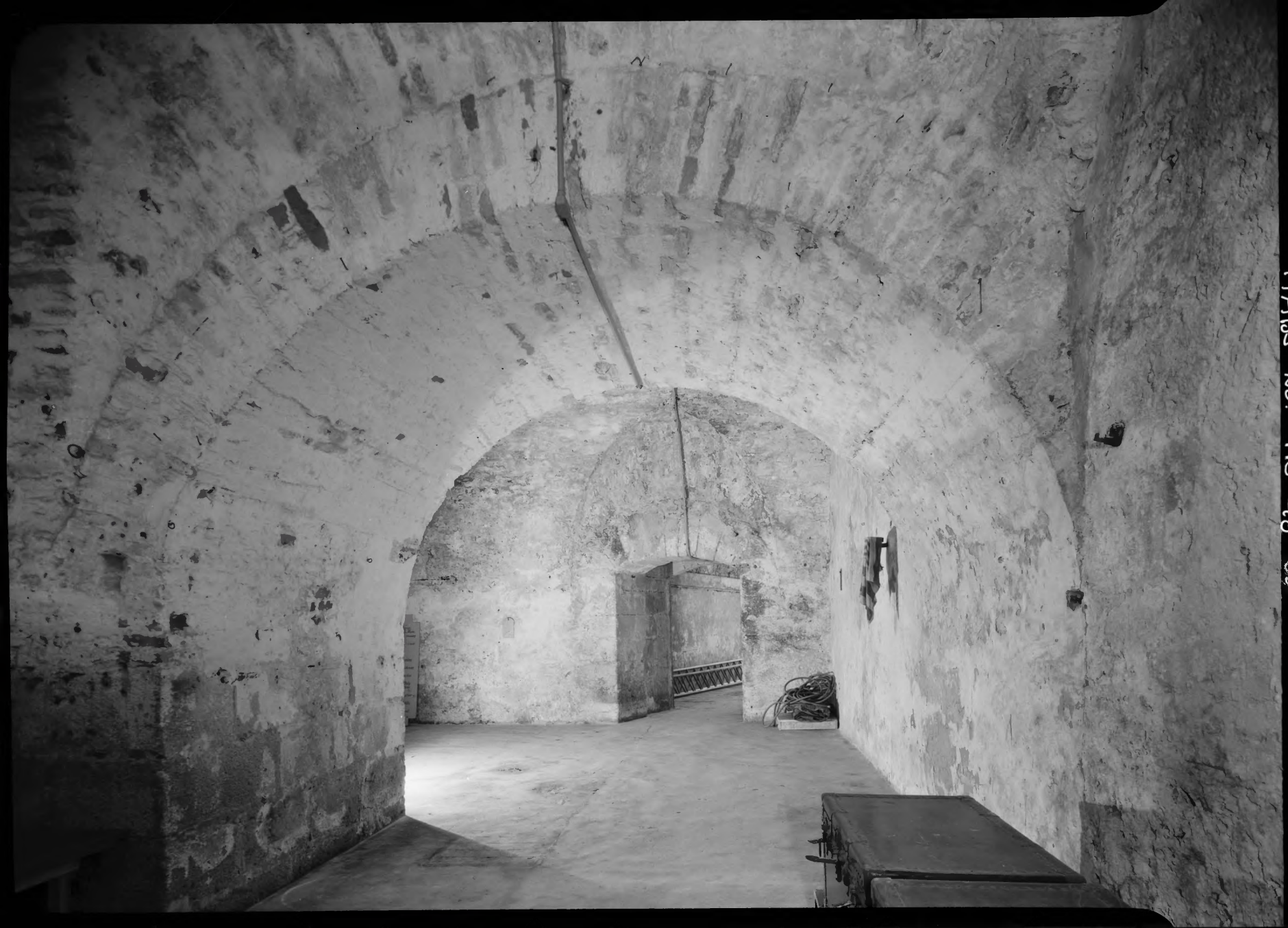




HABS No. PR-48-63

HABS No. PR-48-64





HARS No. PR-40-65

HA88 No. 92-48-56



FABS No. PR-48-67



HARRS No. PR-48-68

HABS No. PR-48-63

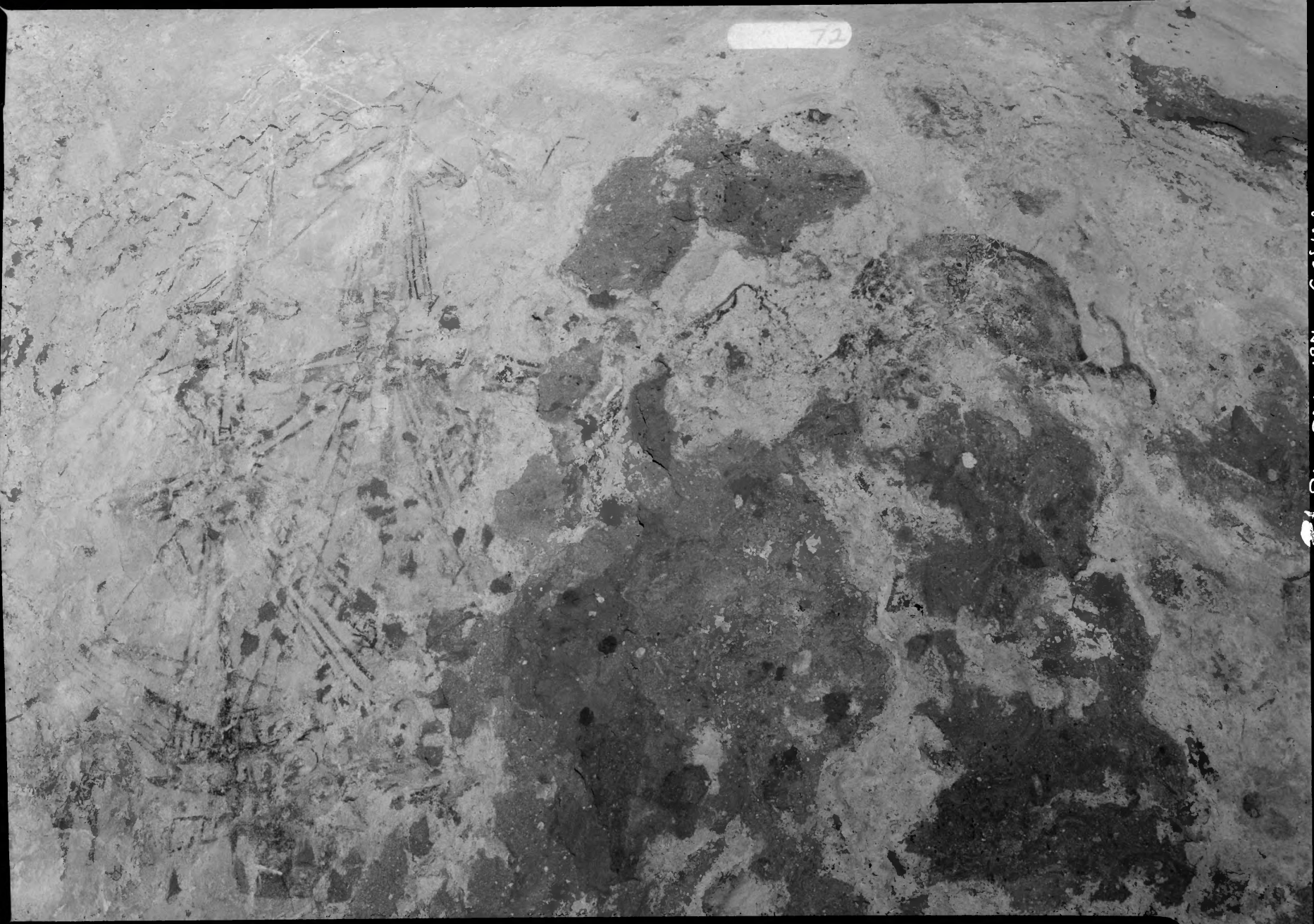




HABS No. PR-48-70

72

HAES No. PR-48-71



HABS No. PR-48-72



HABS No. PC-48-73





HABS No. PR-48-74

HISTORIC AMERICAN BUILDINGS SURVEY

INDEX TO PHOTOGRAPHS

Castillo de San Felipe
del Morro
HABS No. PR-48
(page 2)

- PR-48-25 Latrine Santa Barbara Bastion
- PR-48-26 Collecting ditch at base of El Macho wall on Santa Barbara Bastion
- PR-48-27 View up main ramp from Santa Barbara Bastion
- PR-48-28 View of entrance to Triangular staircase showing buttress and part of El Macho wall
- PR-48-29 Entrance to Tejeda Bastion from Carmen Bastion
- PR-48-30 Close-up of entrance to Tejeda Bastion from Carmen Bastion
- PR-48-31 Ramp to Austria Bastion as seen through archway south end of Plaza de Armas
- PR-48-32 Plaque on outer face of Austria Bastion
- PR-48-33 Ramp between Carmen and Ochoa Bastions viewed from the west
- PR-48-34 Ramp from Carmen Bastion to either Ochoa or Odisa Bastion with view of lighthouse to the right
- PR-48-35 Plaque on corner of Ochoa Bastion viewed from the east
- PR-48-36 View of El Macho from top of Santa Barbara Bastion
- PR-48-37 Close-up of stairs in previous photo, leading up to El Macho and down to Plaza de Armas, from Santa Barbara Bastion, viewed from northwest
- PR-48-38 Detail of head of circular staircase between Santa Barbara Bastion and lower court
- PR-48-39 Scanning Post, Santa Barbara Bastion, viewed from that bastion
- PR-48-40 Mounted cannon and embrasures
- PR-48-41 North wall of floating battery viewed from the south
- PR-48-42 Sentry box at foot of great ramp between Santa Barbara and Plaza de Armas

HISTORIC AMERICAN BUILDINGS SURVEY

INDEX TO PHOTOGRAPHS

Castillo de San Felipe
del Morro
HABS No. PR-48
(page 3)

- PR-48-43 Interior of sally port
- PR-48-44 Looking into sally port from Plaza de Armas
- PR-48-45 Bridge across moat with sally port to the left, viewed from southeast
- PR-48-46 View of Plaza de Armas taken through archway between Plaza de Armas and Carmen Bastion, looking southwest
- PR-48-47 Elevation of chapel, Plaza de Armas
- PR-48-48 Oblique view of elevation of chapel
- PR-48-49 Casemate #7, Plaza de Armas
- PR-48-50 Casemate #9, Plaza de Armas, one wing open
- PR-48-51 Casemate #23, Plaza de Armas to show door and shutters, buttress at left contains leader to cistern
- PR-48-52 Original door to casemate #25, exterior side
- PR-48-53 Trough and vaulting under main staircase to lower court, viewed from the north
- PR-48-54 Entrance from tunnel, exterior view of floating battery
- PR-48-55 Elevation of typical casemate entrance in lower court
- PR-48-56 Interior of casemate lower court level looking out toward stairs
- PR-48-57 Traces of range and hood, interior of kitchen casemate, lower court
- PR-48-58 Casemates under and on south side of main ramp on Santa Barbara Bastion
- PR-48-59 Vaulting over main ramp to show construction on seaward side of wall
- PR-48-60 Interior of circular staircase taken at court level
- PR-48-61 Scrollwork on triangular staircase south of Poaza de Armas

HISTORIC AMERICAN BUILDINGS SURVEY

INDEX TO PHOTOGRAPHS

Castillo de San Felipe
del Morro
HABS No. PR-48
(page 4)

- PR-48-62 Triangular staircase south of Plaza de Armas
- PR-48-63 Interior of casemates, lower level
- PR-48-64 Interior, door to gun port in casemate #14, Plaza de Armas
- PR-48-65 Interior of casemate #17, showing vaulting of one arch
- PR-48-66 Interior of casemate #17, showing vaulting of two arches
- PR-48-67 Interior, floor of casemate #18, showing inscription of heart
within circle
- PR-48-68 Interior, floor of casemant #18, showing historic grafetti
- PR-48-69 Interior, door to casemate #24
- PR-48-70 Interior, casemate #27
- PR-48-71 Interior, historic grafetti, in niche in east side of round
tower below Santa Barbara Bastion
- PR-48-72 Interior, view of triangular staircase between Santa Barbara and
Carmen Bastions
- PR-48-73 Interior, tunnel to tower below Santa Barbara Bastion
- PR-48-74 Interior of latrine, Santa Barbara Bastion