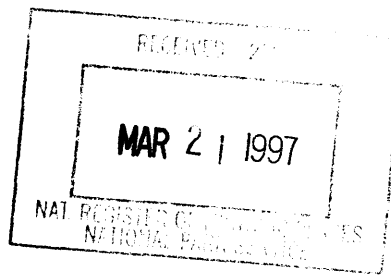


United States Department of the Interior
National Park Service

NATIONAL REGISTER OF HISTORIC PLACES
REGISTRATION FORM



This form is for use in nominating or requesting determinations for individual properties and districts. See instructions in How to Complete the National Register of Historic Places Registration Form (National Register Bulletin 16A). Complete each item by marking "X" in the appropriate box or by entering the information requested. If any item does not apply to the property being documented, enter "N/A" for "not applicable." For functions, architectural classification, materials, and areas of significance, enter only categories and subcategories from the instructions. Place additional entries and narrative items on continuation sheets (NPS Form 10-900a). Use a typewriter, word processor, or computer, to complete all items.

1. Name of Property

historic name WOMAN'S CLUB OF STARKE

other names/site number _____

2. Location

street & number 201 North Walnut Street

N/A not for publication

city or town Starke

N/A vicinity

state FLORIDA code FL county Bradford code 007 zip code 32091

3. State/Federal Agency Certification

As the designated authority under the National Historic Preservation Act, as amended, I hereby certify that this nomination request for determination of eligibility meets the documentation standards for registering properties in the National Register of Historic Places and meets the procedural and professional requirements set forth in 36 CFR Part 60. In my opinion, the property meets does not meet the National Register criteria. I recommend that this property be considered significant nationally statewide locally. (See continuation sheet for additional comments.)

Signature of certifying official/Title

Date

Florida State Historic Preservation Officer, Division of Historical Resources

State or Federal agency and bureau

In my opinion, the property meets does not meet the National Register criteria. (See continuation sheet for additional comments.)

Signature of certifying official/Title

Date

State or Federal agency and bureau

4. National Park Service Certification

I hereby certify that the property is:

entered in the National Register See continuation sheet

determined eligible for the National Register See continuation sheet.

determined not eligible for the National Register See continuation sheet.

removed from the National Register.

other, (explain) _____

Signature of the Keeper

Date of Action

[Signature]

4/18/97

Woman's Club of Starke
Name of Property

Bradford Co., FL
County and State

5. Classification

Ownership of Property
(Check as many boxes as apply)

- private
- public-local
- public-State
- public-Federal

Category of Property
(Check only one box)

- buildings
- district
- site
- structure
- object

Number of Resources within Property
(Do not include any previously listed resources in the count)

Contributing	Noncontributing	
1	0	buildings
0	0	sites
0	0	structures
1	0	objects
2	0	total

Name of related multiple property listings
(Enter "NA" if property is not part of a multiple property listing.)

"N/A"

Number of contributing resources previously listed in the National Register

0

6. Function or Use

Historic Functions
(Enter categories from instructions)

SOCIAL: clubhouse

RECREATION AND CULTURE

Current Functions
(Enter categories from instructions)

SOCIAL: clubhouse

7. Description

Architectural Classification
(Enter categories from instructions)

CRAFTSMAN/BUNGALOW

Materials
(Enter categories from instructions)

foundation STUCCO

walls STUCCO

roof ASPHALT: shingle

other _____

Narrative Description

(Describe the historic and current condition of the property on one or more continuation sheets.)

Woman's Club of Starke
Name of Property

Bradford Co., FL
County and State

8. Statement of Significance

Applicable National Register Criteria

(Mark "X" in one or more boxes for the criteria qualifying the property for National Register listing.)

- A** Property is associated with events that have made a significant contribution to the broad patterns of our history.
- B** Property is associated with the lives of persons significant in our past.
- C** Property embodies the distinctive characteristics of a type, period, or method of construction or represents the work of a master, or possesses high artistic values, or represents a significant and distinguishable entity whose components lack individual distinction.
- D** Property has yielded, or is likely to yield information important in prehistory or history.

Criteria Considerations

(Mark "X" in all the boxes that apply.)

Property is:

- A** owned by a religious institution or used for religious purposes.
- B** removed from its original location.
- C** a birthplace or grave.
- D** a cemetery.
- E** a reconstructed building, object, or structure.
- F** a commemorative property.
- G** less than 50 years of age or achieved significance within the past 50 years

Narrative Statement of Significance

(Explain the significance of the property on one or more continuation sheets.)

9. Major Bibliographical References

Bibliography

Cite the books, articles, and other sources used in preparing this form on one or more continuation sheets.)

Previous documentation on file (NPS):

- preliminary determination of individual listing (36 CFR 36) has been requested
- previously listed in the National Register
- previously determined eligible by the National Register
- designated a National Historic Landmark
- recorded by Historic American Buildings Survey # _____
- recorded by Historic American Engineering Record

Areas of Significance

(Enter categories from instructions)

SOCIAL HISTORY

ARCHITECTURE

Period of Significance

1922-1947

Significant Dates

1922

Significant Person

N/A

Cultural Affiliation

N/A

Architect/Builder

McKay, George W./Bell, C.W.S.

Primary location of additional data:

- State Historic Preservation Office
- Other State Agency
- Federal agency
- Local government
- University
- Other

Name of Repository

Woman's Club of Starke
Name of Property

Bradford Co., FL
County and State

10. Geographical Data

Acreege of Property less than one

UTM References

(Place additional references on a continuation sheet.)

1	1	7	3	9	2	9	0	0	3	3	1	3	0	0	0
	Zone		Easting						Northing						
2															

3															
	Zone		Easting						Northing						
4															

See continuation sheet

Verbal Boundary Description

(Describe the boundaries of the property on a continuation sheet.)

Boundary Justification

(Explain why the boundaries were selected on a continuation sheet.)

11. Form Prepared By

name/title Eric S. Hodge/Robert O. Jones, Historic Sites Specialist

organization Bureau of Historic Preservation date March 1997

street & number R.A. Gray Building, 500 S. Bronough Street telephone (904) 487-2333

city or town Tallahassee state Florida zip code 32399-0250

Additional Documentation

Submit the following items with the completed form:

Continuation Sheets

Maps

A **USGS map** (7.5 or 15 minute series) indicating the property's location.

A **Sketch map** for historic districts and properties having large acreage or numerous resources.

Photographs

Representative **black and white photographs** of the property.

Additional items

(check with the SHPO or FPO for any additional items)

Property Owner

(Complete this item at the request of SHPO or FPO.)

name Woman's Club of Starke c/o Elizabeth Jarmon

street & number 320 East Call Street telephone 904-964-2004

city or town Starke state FL zip code 32091

Paperwork Reduction Act Statement: This information is being collected for applications to the National Register of Historic Places to nominate properties for listing or determine eligibility for listing, to list properties, and amend listings. Response to this request is required to obtain a benefit in accordance with the National Historic Preservation Act, as amended (16 U.S.C. 470 et seq.).

Estimated Burden Statement: Public reporting burden for this form is estimated to average 18.1 hours per response including time for reviewing instructions, gathering and maintaining data, and completing and reviewing the form. Direct comments regarding this burden estimate or any aspect of this form to the Chief, Administrative Services Division, National Park Service, P.O. Box 37127, Washington, DC 20013-7127; and the Office of Management and Budget, Paperwork Reduction Projects (1024-0018), Washington, DC 20503.

**United States Department of the Interior
National Park Service**

**National Register of Historic Places
Continuation Sheet**

Section number 7 Page 1

WOMAN'S CLUB OF STARKE,
STARKE, BRADFORD CO., FL

SUMMARY

The Woman's Club of Starke, 201 North Walnut Street, is a 1922, Craftsman/Bungalow style, one-story stucco building. The main (east) facade fronts on Walnut Street, and is dominated by a full width porch. It has a rectangular main block with an extension along the north wall. The main block has a hip roof, with a prominent hip dormer centered in front. The north extension has an adjoining hip roof. There is one exterior chimney on the north side.

The interior is divided into five main spaces which include an auditorium with a stage, dining, office, and service areas. The building has had two minor additions stemming from its USO occupation in the 1940's.

SETTING

The clubhouse is located in the center of Starke, in Bradford County. It is located at the northwestern corner of the intersection of Jefferson and North Walnut Streets, between the National Register Call Street Historic District, and the city's most notable historic residential neighborhood to the north. Immediately to the west is a drive-through bank. To the north is a parking lot. To the east is the First United Methodist Church. To the south is the Magnolia Hotel. Across the intersection to the southeast is the Starke Post Office, completed in 1941. The northern portion of the property is planted with trees and shrubs and contains a fountain.

PHYSICAL DESCRIPTION

Exterior

The main facade is spanned by an open porch accessed by five tiled steps (Photo #1). The porch is covered by the overhanging roof, which is supported by two square piers on

United States Department of the Interior
National Park ServiceNational Register of Historic Places
Continuation SheetSection number 7 Page 2WOMAN'S CLUB OF STARKE,
STARKE, BRADFORD CO., FL

either corner joined with a broad segmental arch. There is a solid knee rail across the porch. The two piers and knee rail have rectangular caps. Two main doors with four panels are set within an arched doorway. A fan light transom is above the doors. Pairs of 6/1, double hung sash windows are centered in the walls on either side of the entrance. Centered within the hip roof, above the main entrance, is a large hip dormer. The dormer contains a fixed 10-light window, flanked by two, fixed, 4-light windows. The broad eaves of the roof have exposed rafters. The east wall of the northern extension has four pairs of 10-light casement windows.

The broad south elevation fronts on Jefferson Street, and has an arched opening beside the main porch (Photo #2). Within the wall of the building, moving from east to west, is a 6/1, sash window; a pair of small 4-light casement windows; and four pairs of 6/1, sash windows with 6-light transoms. Furthest to the west is a small 6/1, sash window.

The west elevation has a steel door centered in the main block, accessed by seven wooden steps, and two, 1/1, double hung sash windows centered on either side (Photo #3). To the north, flush with the west wall, is an addition with its wall lower than the main block, and four single-light awning windows under the eave of a shed roof.

A door is centered in the north wall of the northern elevation, with a disability access ramp leading from the east (Photo #4). The door contains 9 lights in the upper half, and has a 6-light transom. Three pairs of 10-light casements are to the east of the door. One pair of 10-light casements is to the west of the door along with a grouping of small 1/1, sash windows. To the west end of the elevation is a solid door. The arched opening of the facade porch is to the east (Photo #5). Also visible is a pair of 10-light casement windows, and the exterior of the chimney.

The fountain to the north of the building is a concrete column with three dolphins (Photo #6). A low, circular, limestone retaining wall does not currently hold water. Dolphins rise from the center. A bronze tablet is set into

United States Department of the Interior
National Park Service

**National Register of Historic Places
Continuation Sheet**

Section number 7 Page 3

WOMAN'S CLUB OF STARKE,
STARKE, BRADFORD CO., FL

steps, and is inscribed that the fountain is dedicated to Mr. J.W. Alvarez, designed and sculpted by Albert Bruner, and built by Ocala Landscape Service in 1931.

Interior

The wood floors are original as are all trim, doors and windows. The walls have wood paneling which cover the original plaster. Ceilings have drop acoustic tile, which covers the original plaster. Florescent lighting suspended from the ceiling replaced original fixtures. Entering the main doors, is a short hall or foyer. The lady's lounge, to the south, retains the original surfaces and fixtures (Photo #7). To the north of the foyer is a drawing room. The drawing room contains a fireplace and built-in book cases (Photo #8). The foyer leads to the main room, an auditorium with a stage is at the west end (Photos #9&10). There are dressing rooms to the north and south of the stage, and an exit door behind the stage to the west. The extension along the north contains a banquet hall (Photo #11), kitchen (Photo #12), and two storage rooms. There is built-in box seating/storage under the windows in the banquet hall. An office is in the east end of the extension.

ALTERATIONS

The clubhouse was occupied by the USO in the early 1940s, and was altered at this time. Front doors were placed within what originally had been an open, arched foyer. Inner doors, opening to the auditorium remained. Two rooms, used for offices, were added to the east of the banquet hall, extending the north extension towards the east. The chimney was removed above the roof, making the fireplace inoperable. A small shed roofed addition was added to the west end of the kitchen, bringing it flush with the original west wall.

In 1972 the interior was remodeled by paneling over the plaster walls. Drop acoustic tiles covered the ceiling to

**United States Department of the Interior
National Park Service**

**National Register of Historic Places
Continuation Sheet**

Section number 7 Page 4

WOMAN'S CLUB OF STARKE,
STARKE, BRADFORD CO., FL

accommodate ducts for a heating and cooling system. Most of the original lighting was replaced by florescent fixtures. Original surfaces and fixtures remain in the lady's lounge.

In 1984 the kitchen was enlarged by moving the 1940s interior wall to the west.

**United States Department of the Interior
National Park Service**

**National Register of Historic Places
Continuation Sheet**

Section number 8 Page 1

**WOMAN'S CLUB OF STARKE,
STARKE, BRADFORD CO., FL**

SUMMARY

The Women's Club of Starke is locally significant under Criterion A and C in the areas of Social History and Architecture. Since its construction in 1922, the clubhouse has been used as a public library and U.S.O. by the army during World War II. The club has provided support services to the public school. The club house is a good example of Craftsman style architecture, executed in stucco, and serves as a downtown landmark.

HISTORIC CONTEXT

Starke, Bradford County, Florida

The area that is Bradford County was a virtual wilderness, and remained sparsely settled by pioneers during Florida's Territorial Period, 1822-1845. The interior of the state was more heavily populated by Native Americans. By 1857, the non-Native population of the area had grown enough to warrant a post office. The settlement was named Starke, reportedly by the postmaster in honor of the South Carolina family of his fiancée. Construction of a rail line cutting diagonally across the state from Fernandina to Cedar Key was begun in 1855, under the direction of the Florida Railroad Company. The track for the new railroad reached Starke in March, 1858. The track was completed to Cedar Key in March of 1861, just two months after the outbreak of the Civil War. Despite the hardships suffered during the war and Reconstruction era, Starke continued to grow and had a population of four hundred in 1875, just one year before the city was incorporated.

The economy was dependent on northern visitors and the citrus industry. Many of the Northern newcomers, who had made money in oil and coal investments in Pennsylvania, began to build large luxurious homes in which to retire, and/or invest in the orange groves which dotted the

**United States Department of the Interior
National Park Service**

**National Register of Historic Places
Continuation Sheet**

Section number 8 Page 2

WOMAN'S CLUB OF STARKE,
STARKE, BRADFORD CO., FL

landscape around the town. Two severe freezes of the 1890s, killed many trees and convinced the growers that citrus was no longer viable in this area of the state. A more broadly based agricultural economy was then established based on cotton, lumber, and strawberries. The area became the strawberry shipping capital of Florida.

In 1875, the city became the county seat temporarily. Due to political disputes, the courthouse shifted between Starke and the town of Lake Butler for many years. A county courthouse was completed in Starke in 1902. In 1921, Union County was established from the western portion of Bradford County with Lake Butler as its county seat.

A portion of the new county line between Bradford County was straddled by the Florida State Work Farm, established in 1913. This facility grew into the Florida State Prison and in 1924 became the site where state executions were carried out.

The greatest boom to Starke was the establishment of a National Guard training site, Camp Blanding, seven miles east of town. Work began in 1939 on the camp which was to be built for ten thousand men. However, with the entrance of the U.S. into World War II, Camp Blanding was taken over by the Federal Government for use as one of the largest troop training centers in the nation. It also became the fourth largest population center in the state, with over one hundred thousand infantry trainees. The town of Starke, with its population of less than two thousand, was not prepared for the influx of servicemen and laborers, and began a building boom to accommodate the newcomers. A local newspaper wrote that almost overnight, the quiet, little town turned into a "glorified carnival, complete with neon lights and street vendors stretching for miles." Many of the wartime newcomers remained residents after the war. Camp Blanding now serves as a National Guard training site.

The current economy is also supported by the Dupont Company's mining operation near the town. The town is a hub for tourist travel and commercial transportation which

**United States Department of the Interior
National Park Service****National Register of Historic Places
Continuation Sheet**Section number 8 Page 3**WOMAN'S CLUB OF STARKE,
STARKE, BRADFORD CO., FL**

contributes to the city's economy through the large number of service facilities.

Woman's Clubs

Woman's Clubs have been formed at the local level since the Civil War to meet the needs of their communities in areas of education, welfare, conservation, and the arts. Florida's earliest club was the Village Improvement Association of Green Cove Springs, Clay County, formed in the 1880s. In 1895, six recently formed clubs within the state met in Green Cove Springs and organized the Florida Federation of Women's Clubs [F.F.W.C.]. This organization mimicked the General Federation of Women's Clubs which had been formed a few years earlier at the national level.

The F.F.W.C.'s earliest activities involved social morality, education, and bird protection. In 1898, the F.F.W.C. was admitted to the General Federation of Women's Clubs. By 1914, the F.F.W.C. had departments which coordinated activities in art, civics, civil service reform, music, public health, home economics, forestry, waterways, roads, food, and Seminole Indians. Literature and library promotion were among the F.F.W.C.'s busiest departments.

The Woman's Club of Starke had its beginnings as the Mother's Club of Starke, organized at the home of Mrs. T.R. Sweat. Its purpose was to assist the Bradford County High School. Only mothers were accepted into active membership, with teachers being taken in as honorary members. The club's earliest project was furnishing a room in the school for a library and a study for the principal. The members contributed books from their personal libraries and several much-needed reference books were purchased. The club also hired a janitor for the school, there being no funds provided by the trustees of the school. The club helped provide children of "destitute parentage" with clothing and books. In 1911, the club began using the principal's office as their meeting place once a month. The club experimented with other names for the organization, and in

**United States Department of the Interior
National Park Service**

**National Register of Historic Places
Continuation Sheet**

Section number 8 Page 4

**WOMAN'S CLUB OF STARKE,
STARKE, BRADFORD CO., FL**

1913, having broadened its original scope, the group was reorganized as the Woman's Club. In 1914, the club was received into the Florida Federation of Women's Clubs.

The club wished to acquire a building for its own use. The majority of members favored the former school building on the corner of North Walnut and Jefferson Streets, as the most centrally located place for a combined club room, auditorium, and rest rooms for out of town shoppers and visitors. This 1877, wooden building, the first public school in Starke, was vacated in 1914 when a new brick school was completed. Having been vacated, the Woman's Club began to use the old building for its headquarters.

In the Spring of 1917, with World War I anticipated, the Woman's Club agenda was laid aside as the organization was turned over to the Red Cross intact, including personnel, funds, and activities. The ladies made hospital, comfort, and Christmas kits for the troops, and shipped clothes to war destitute allies. It was not until October, 1919 that the ladies began to function as a club again.

HISTORIC SIGNIFICANCE

On July 22, 1920, under club president Mrs. N.D. Wainwright, Mrs. A.H. Freeman made a motion that active work begin toward obtaining a clubhouse. In January, 1921, the old school building was conveyed to the Woman's Club by the County Board of Education, the instrument being a ninety-nine year lease on the building and the lot on which it stood. The Woman's Club made plans to remodel the club and reviewed plans from architects in this regard. The business men of the town gave the Woman's Club \$2215 to be used toward the remodeling. It was decided that it would be best to take down the old building and make it over into a one-story clubhouse with a modern design. The lumber from the old school that could not be used in the new building, was to be offered for sale. The clubhouse fund was supported by other fund raising activities including carnivals, musicales, and dinners.

**United States Department of the Interior
National Park Service**

**National Register of Historic Places
Continuation Sheet**

Section number 8 Page 5

**WOMAN'S CLUB OF STARKE,
STARKE, BRADFORD CO., FL**

When it was learned that the Woman's Club could not borrow money on the ninety-nine year lease, the County School Board was appealed to for a deed to the property. After much effort the property was deeded to the Woman's Club. This was done with the understanding that in addition to being a clubhouse, it was to be a community facility. The agreement stipulated that it would be "used for the betterment of the physical, social, and moral welfare of Starke."

The club raised \$4176.60 and borrowed \$5500 to help finance the building. Additional expenses brought the total cost of the clubhouse to \$10,000. Designed by the Ocala architect, George W. McKay, construction began in February, 1922. C.W.S. Bell, of Jacksonville, built the clubhouse using as much lumber from the old school as possible. The foundation of the old school was found to be stable, and was used for the new building. The formal opening of the clubhouse was November 3, 1922, and it was dedicated by Mrs. W.S. Jennings of Jacksonville, Vice-President of the General Federation of Women's Clubs. Mrs. Jennings, in her dedication address, praised the women of Starke "who by their unity have erected one of the most beautiful clubhouses in the state."

Projects undertaken in the 1920s by the Woman's Club of Starke included a drive to get cows off the street, and develop the city park property. The park was named for Mrs. Wainwright, club president at the time. They also petitioned the legislature to grant women of Florida municipal suffrage.

In addition to being used as a clubhouse, portions of the building were used by the Bradford County Public library. In 1935, it was announced that a library project, launched by the Federal Emergency Relief Act [FERA], had been approved for Starke. The FERA was responsible for paying the salary of the librarian, and additional expenses were borne by the Woman's Club. One thousand books were on hand when the library opened, with seven hundred and seventy-seven donated from the private library of the first

**United States Department of the Interior
National Park Service****National Register of Historic Places
Continuation Sheet**Section number 8 Page 6**WOMAN'S CLUB OF STARKE,
STARKE, BRADFORD CO., FL**

librarian, Heanette C. Young. All books were loaned free to anyone within the county. In August of 1936, the library had the honor of becoming the first library in Florida to be granted the concession of borrowing books from the State Library in Tallahassee. The library's growing popularity forced it into a larger rooms within the clubhouse in 1937, and again in 1941. By 1956, the library had outgrown the facility, and was moved to the second floor of the county jail building.

Camp Blanding expanded during World War II, and the town's role as a social center necessitated the creation of a recreation facility. In January, 1941, the United Service Organizations [USO] for the National Defense, a support group to aid the national defense, made arrangements to use the Woman's Club. The Army Y.M.C.A. opened in April, and provided activities such as minstrels, radio broadcasts, quiz games, card games, dances, and vaudeville shows for the soldiers. The Army used the clubhouse until a larger building was completed in 1942, said to be the first USO building begun in the country.

The Woman's Club currently serves as a facility for the Santa Fe Community College, local public school functions, and a community assistance group. It is the largest public assembly facility in the county with a kitchen.

ARCHITECTURAL CONTEXT

Craftsman/Bungalow style dominated small residential construction throughout the country from 1905 into the 1920s. The style and arts-and-crafts ethic of construction was popularized through national magazines and pattern books. Relying on local materials and building traditions, the style embraced many variants of materials, arrangements, and design elements. Developed from banglas, simple shelters the English colonials encountered in India, Bungalow construction was dominated by broad, sheltering roofs, with broad porches, and served seasonal or vacation uses. Architectural scholar Clay Lancaster identifies a

**United States Department of the Interior
National Park Service**

**National Register of Historic Places
Continuation Sheet**

Section number 8 Page 7

WOMAN'S CLUB OF STARKE,
STARKE, BRADFORD CO., FL

type of Bungalow with simple rectangular footprint, dominant front porch, and large front dormer as a "box bungalow."

ARCHITECTURAL SIGNIFICANCE

The Woman's Club is unusual in being a public building built in the Craftsman/Bungalow style, and constructed with stucco. The building retains a high degree of architectural integrity with its original materials, trim, windows and doors remaining. Alterations, historic and non-historic, do not diminish the character of the building. Historic spatial arrangements have remained virtually undisturbed. The building is a distinctive landmark in the city's downtown.

United States Department of the Interior
National Park Service

**National Register of Historic Places
Continuation Sheet**

Section number 9 Page 1

WOMAN'S CLUB OF STARKE,
STARKE, BRADFORD CO., FL

BIBLIOGRAPHY

Bradford County Telegraph (newspaper):

"Mothers' Club Organized Saturday," 19 October, 1906: 1.

"Bradford County High School Will Open Monday," 18 September
1914.

"Civic Club Meeting," 16 February 1917.

"Club House for Woman's Club of Starke," 7 January 1921.

"Business Men Contribute \$2215 to Remodeling Building for
Woman's Club," 14 January, 1921.

"Woman's Club Meeting," 11 February, 1921: I.

"Woman's Club Meeting," 11 November, 1921: I.

"Woman's Club Entertained by Mrs. Robinson," 16 December,
1921: I.

"Objects of Women's Clubs," 30 June, 1922: I.

"Handsome New Club House Opened this Evening," 3 November,
1922: I.

"Woman's Club Dedicated Last Friday," 10 November, 1922: I.

"Interesting History of Starke Woman's Club," 14 March 1924:
1+

"Memorial Fountain Unveiled Wednesday at Woman's Club," 12
February, 1932: 1.

United States Department of the Interior
National Park Service

National Register of Historic Places
Continuation Sheet

Section number 9 Page 2

WOMAN'S CLUB OF STARKE,
STARKE, BRADFORD CO., FL

-
- "Library Project Here Approved," 21 June 1935: 1.
- "Library is Now Open for Lending," 19 July, 1935: 1.
- "Y.M.C.A. to Use Woman's Club," 7 February, 1941: 1.
- "Army Y.M.C.A. Opens Saturday," 7 February, 1941: 1.
- "Corner Stone - Laying Ceremony at USO Building Saturday,"
24 October, 1941: 1.
- "Bradford County High School," 6 March 1981.
- "The Battle Raged On!," 10 August, 1989: III.
- "Camp Blanding or Bust," 10 August, 1989: III 11.
- "Starke Woman's Club Active in Civic Improvement Projects,"
10 August, 1989: IV.
- "Starke was Name for Postmaster's Sweetheart; Bradford
County was Named for Civil War Hero," 10 August 1989:
IV 8+
- "Prisons Have Historical, Economic Affect," 10 August, 1989:
V 8+.
- "Library Still Growing," 10 August, 1989: VI.
- Staats, Mabel Meadows. History of the Florida Federation of
Women's Clubs 1895-1960. Lakeland, Florida: Florida
Federation of Women's Clubs Headquarters, (d.u.).
- Starke=Bradford County Chamber of Commerce. Official Guide
of the Starke-Bradford County Chamber of Commerce,
1988.

**United States Department of the Interior
National Park Service**

**National Register of Historic Places
Continuation Sheet**

Section number 10 Page 1

WOMAN'S CLUB OF STARKE,
STARKE, BRADFORD CO., FL

VERBAL BOUNDARY DESCRIPTION

Lot 5 and 7 in Block 6 of the original town of Starke, Florida, as per plat thereof recorded in the current public records of Bradford County, Florida, in Deed Book "N" on page 759.

BOUNDARY JUSTIFICATION

This boundary encompasses the property historically associated with the Woman's Club of Starke.

**United States Department of the Interior
National Park Service**

**National Register of Historic Places
Continuation Sheet**

Section number Photographs
Page 1

**WOMAN'S CLUB OF STARKE,
STARKE, BRADFORD CO., FL**

PHOTOGRAPHIC LIST

1. Woman's Club of Starke, 201 N. Walnut St.
2. Starke, Bradford County, Florida
3. Eric S. Hodge
4. February 6, 1996
5. Hodge Residence, Rt. 1 Box 805, Starke, FL 32091
6. Main Entrance, east elevation, facing west
7. Photo #1 of 12

Items 1-5 are the same for photographs 2-12.

6. South and east elevation, facing northwest.
7. Photo #2 of 12

6. West elevation, facing east.
7. Photo #3 of 12

6. North and east elevation, facing southwest
7. Photo #4 of 12

6. North elevation, facing south
7. Photo #5 of 12

6. Fountain, facing northwest
7. Photo #6 of 12

6. Interior, ladies lounge, facing southeast
7. Photo #7 of 12

6. Interior, drawing room, facing northeast
7. Photo #8 of 12

6. Interior, stage, facing northwest
7. Photo #9 of 12

**United States Department of the Interior
National Park Service**

**National Register of Historic Places
Continuation Sheet**

Section number _____ Photographs _____ Page 2

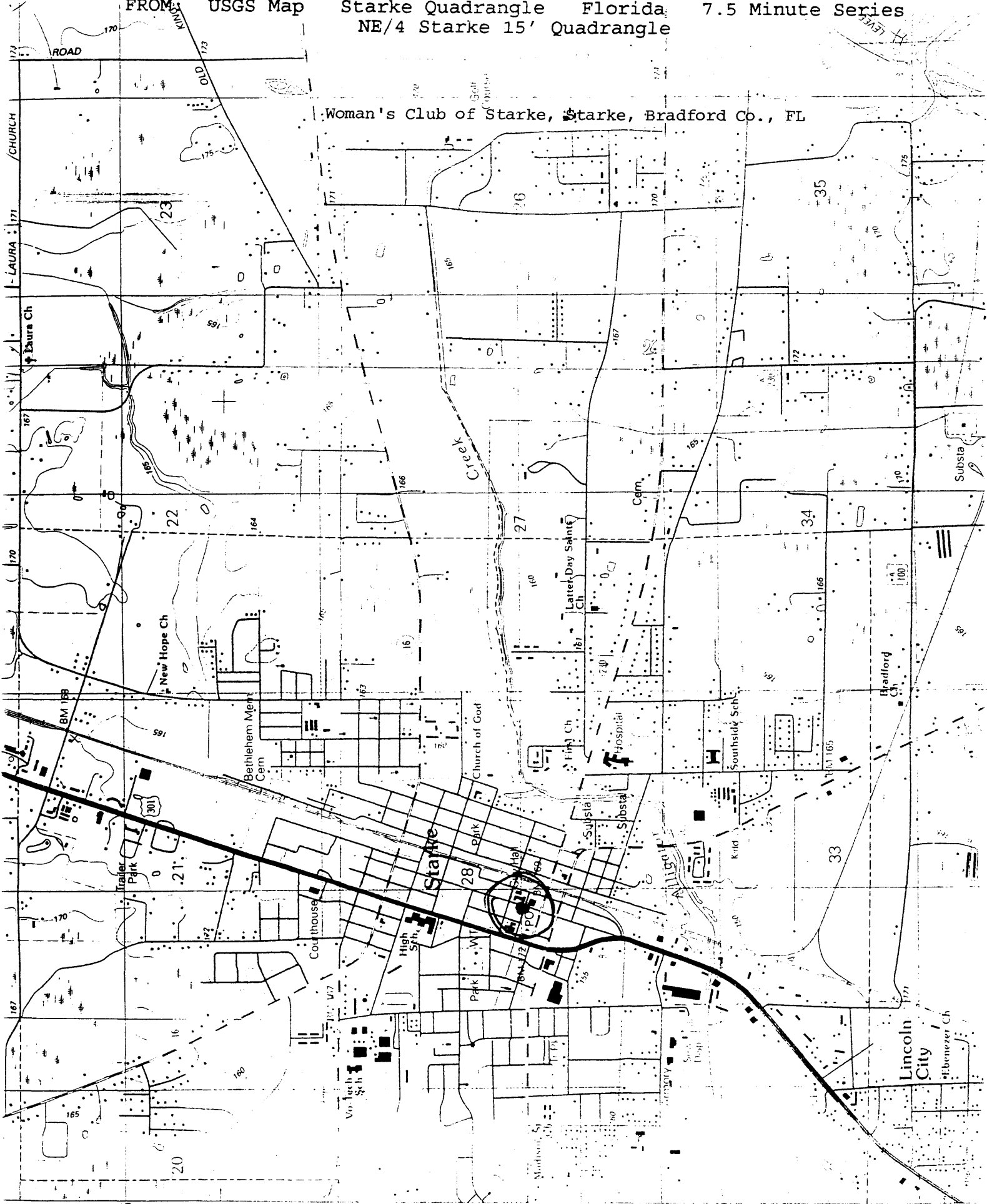
**WOMAN'S CLUB OF STARKE,
STARKE, BRADFORD CO., FL**

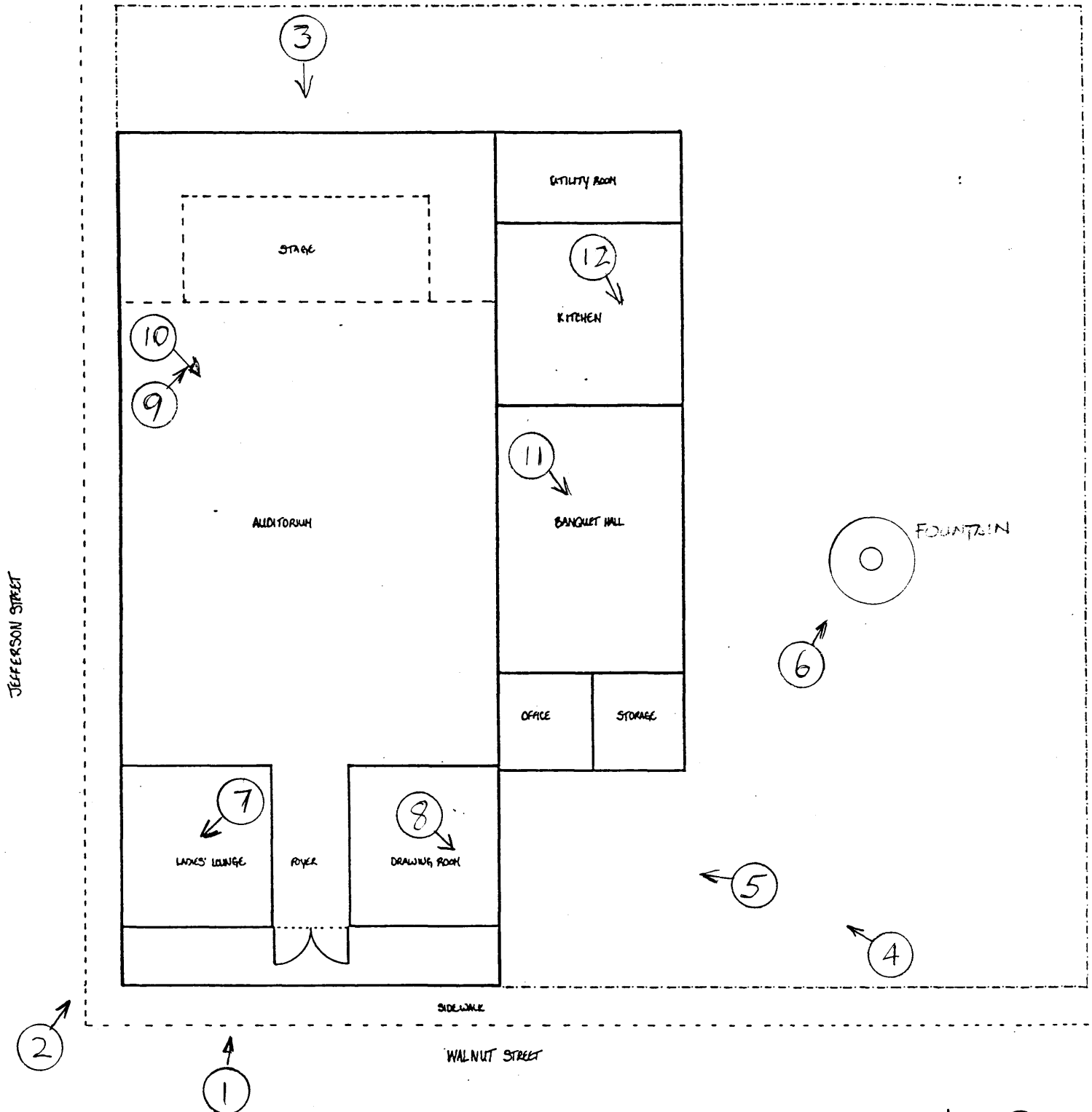
- 6. Interior, auditorium, facing northeast
- 7. Photo #10 of 12

- 6. Interior, banquet hall, facing northeast
- 7. Photo #11 of 12

- 6. Interior, kitchen, facing northeast
- 7. Photo #12 of 12

Woman's Club of Starke, Starke, Bradford Co., FL





STARKE WOMEN'S CLUB - 201N. WALNUT STREET, STARKE, BRADFORD CO., FL | N ⊕

BOUNDARY - SITE - FLOOR PLAN MAP
 PHOTOGRAPHIC DIAGRAM
 ← ⊙ = DIRECTION OF PHOTOGRAPH