



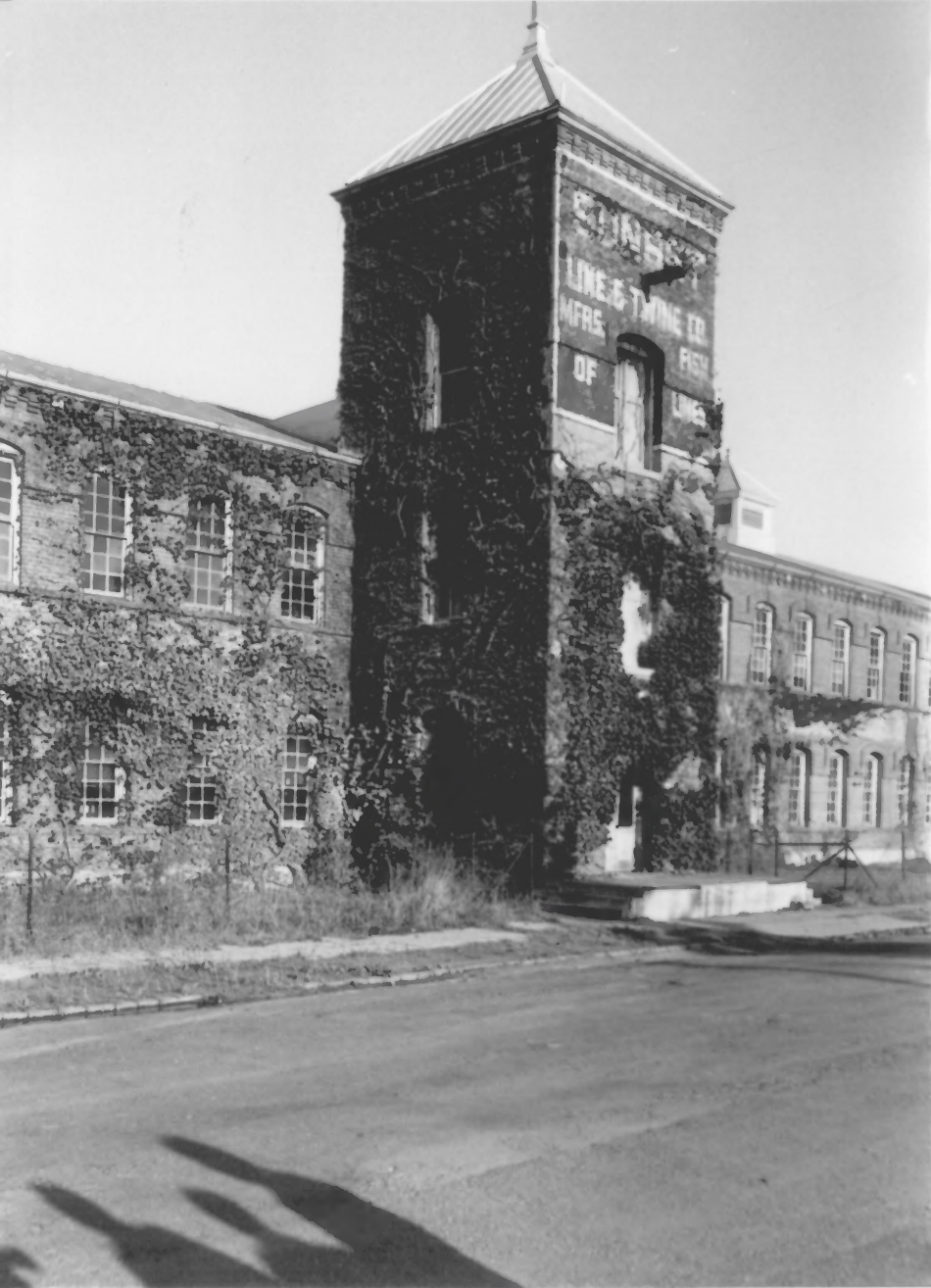
# 1

1. Petaluma Silk Mill (Carlson-Currier/Sunset Line & Twine)
2. 420 Jefferson St., Petaluma, Sonoma County, CA 94952
3. Max Durney
4. November 22, 1984
5. Lucy Kortum, 180 Ely Rd., Petaluma CA 94952
6. Facing ~~east~~ southeast. Front and north wing from intersection of Erwin and Jefferson.
7. (1:4) # 1 of 12



#2

1. Petaluma Silk Mill (Carlson-Currrier/Sunset Line & Twine)
2. 420 Jefferson St., Petaluma, Sonoma County, CA 94952
3. Max Durney
4. November 22, 1984
5. Lucy Kortum, 180 Ely Rd., Petaluma CA 94952
6. Facing <sup>north</sup> east. Front of old wing, across Erwin St. from Sunset Park. Last two windows identify the "new silk vault addition" after 1906; upstairs windows date from that addition. The silk vault was downstairs, windowless, with 26" walls; downstairs windows were cut through at the time of the 1922 addition of new wing and tower. Also visible is the lighter area of the old "Carlson-Currrier" sign above the first story windows.
7. (1:5) #2 of 12



#3

1. Petaluma Silk Mill (Carlson-Currier/Sunset Line & Twine)
2. 420 Jefferson St., Petaluma, Sonoma County, CA 94952
3. Max Durney
4. November 22, 1984
5. Lucy Kortum, 180 Ely Rd., Petaluma CA 94952
6. Facing ~~south~~east. Front, original central tower showing projecting beam.
7. (1:3) #3 of 12



#4

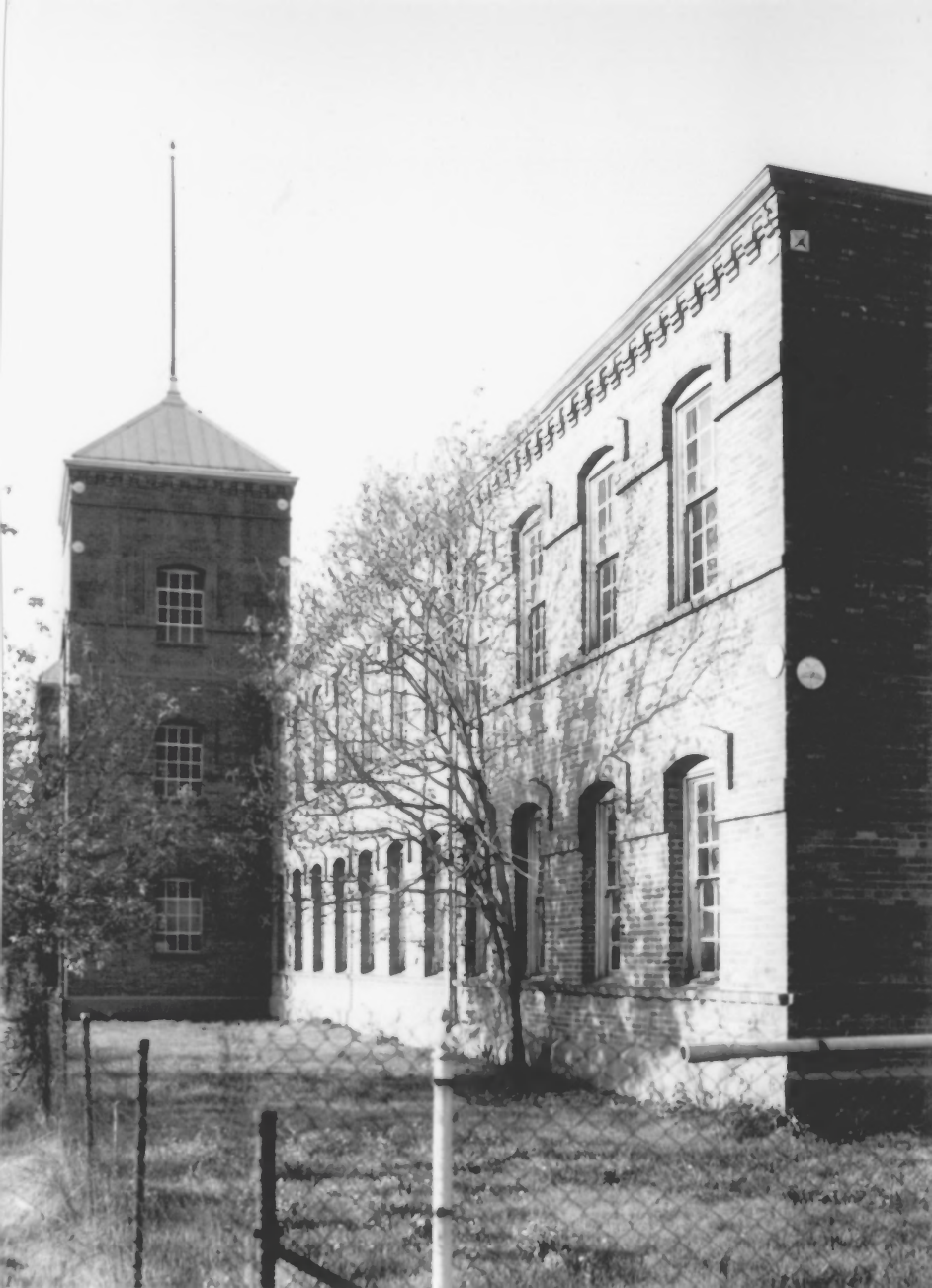
1. Petaluma Silk Mill (Carlson-Carrier/Sunset Line & Twine)
2. 420 Jefferson St., Petaluma, Sonoma County, CA 94952
3. Max Durney
4. November 22, 1984
5. Lucy Kortum, 180 Ely Rd., Petaluma CA 94952
6. Facing ~~northeast~~. Front, looking at south face of original tower.
7. (1:7) #4 of 12





#5

1. Petaluma Silk Mill (Carlson-Currier/Sunset Line & Twine)
2. 420 Jefferson St., Petaluma, Sonoma County, CA 94952
3. Max Durney
4. November 22, 1984
5. Lucy Kortum, 180 Ely Rd., Petaluma CA 94952
6. Facing <sup>north</sup> east. Front, center section between original and new towers, showing end of original south wing, beginning of new wing.
7. (1:6) #5 of 12



#6

1. Petaluma Silk Mill (Carlson-Carrier/Sunset Line & Twine)
2. 420 Jefferson St., Petaluma, Sonoma County, CA 94952
3. Max Durney
4. November 22, 1984
5. Lucy Kortum, 180 Ely Rd., Petaluma CA 94952
6. Facing north<sup>west</sup> Front and south end of new wing and tower.
7. (1:10) #6 of 12



#7

1. Petaluma Silk Mill (Carlson-Carrier/Sunset Line & Twine)
2. 420 Jefferson St., Petaluma, Sonoma County, CA 94952
3. Lucy Kortum
4. April 23, 1985
5. Lucy Kortum, 180 Ely Rd., Petaluma CA 94952
6. Facing north <sup>west</sup> South end of new wing.
7. (2:8) #7 of 12



#8

1. Petaluma Silk Mill (Carlson-Currier/Sunset Line & Twine)
2. 420 Jefferson St., Petaluma, Sonoma County, CA 94952
3. Max Durney
4. November 22, 1984
5. Lucy Kortum, 180 Ely Rd., Petaluma CA 94952
6. Facing ~~north~~west. Back of new wing, showing two-story projecting access, old boiler rooms, old smokestack.
7. (1:11) #8 of 12





#9

1. Petaluma Silk Mill (Carlson-Currier/Sunset Line & Twine)
2. 420 Jefferson St., Petaluma, Sonoma County, CA 94952
3. Lucy Kortum
4. April 23, 1985
5. Lucy Kortum, 180 Ely Rd., Petaluma CA 94952
6. Facing <sup>South</sup> west. Dye house and reservoir, boiler room, base of water tower and cupola, with chimney and cupola visible beyond roof of mill.
7. (2:12) #9 of 12



# 10

1. Petaluma Silk Mill (Carlson-Currier/Sunset Line & Twine)
2. 420 Jefferson St., Petaluma, Sonoma County, CA 94952
3. Max Durney
4. November 22, 1984
5. Lucy Kortum, 180 Ely Rd., Petaluma CA 94952
6. Facing west. Detail of end of dye house, taken from Wilson Street, showing brick plastered over.
7. (1:13) # 10 of 12



FRANKLIN & COMPANY

#11

1. Petaluma Silk Mill (Carlson-Currier/Sunset Line & Twine)
2. 420 Jefferson St., Petaluma, Sonoma County, CA 94952
3. Lucy Kortum
4. April 23, 1985
5. Lucy Kortum, 180 Ely Rd., Petaluma CA 94952
6. Facing south<sup>east</sup> End of "new silk vault addition" (1906-1912)  
with first floor windows and door cut through for entrance  
(1922).
7. (2:3) #11 of 12



#12

1. Petaluma Silk Mill (Carlson-Carrier/Sunset Line & Twine)
2. 420 Jefferson St., Petaluma, Sonoma County, CA 94952
3. Max Durney
4. November 22, 1984
5. Lucy Kortum, 180 Ely Rd., Petaluma CA 94952
6. Facing <sup>north</sup>~~south~~ east. Mill from across McNear Canal just below Old Steamer Gold Landing.
7. (1:17) #12 of 12