

United States Department of the Interior
National Park Service

National Register of Historic Places
Continuation Sheet

Section number _____ Page _____

SUPPLEMENTARY LISTING RECORD

NRIS Reference Number: 97000619

Date Listed: 7/2/97

Davies' Chuck Wagon Diner
Property Name

Jefferson
County

CO
State

Multiple Name

This property is listed in the National Register of Historic Places in accordance with the attached nomination documentation subject to the following exceptions, exclusions, or amendments, notwithstanding the National Park Service certification included in the nomination documentation.

John Boland

Signature of the Keeper

8/4/97

Date of Action

=====
Amended Items in Nomination:

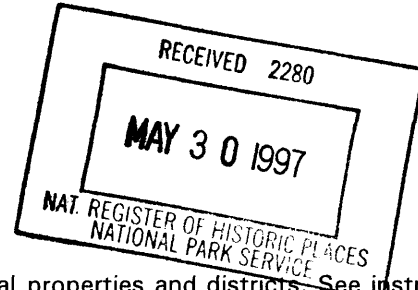
Section 8, Period of Significance: Ownership by the original family does not justify exceptional significance until 1977. The appropriate period of significance is 1957-58. This information was confirmed by Suzanne Doggett on the Colorado SHPO.

DISTRIBUTION:

National Register property file
Nominating Authority (without nomination attachment)

United States Department of the Interior
National Park Service

National Register of Historic Places Registration Form



This form is for use in nominating or requesting determination for individual properties and districts. See instruction in *How to Complete the National Register of Historic Places Registration Form* (National Register Bulletin 16A). Complete each item by marking "x" in the appropriate box or by entering the information requested. If an item does not apply to the property being documented, enter "N/A" for "not applicable." For functions, architectural classification, materials and areas of significance, enter only categories and subcategories from the instructions. Place additional entries and narrative items on continuation sheets (NPS Form 10-900a). Use a typewriter, word processor, or computer, to complete all items.

1. Name of Property

historic name Davies' Chuck Wagon Diner

other names/site number Chuck Wagon Diner, 5JF1112

2. Location

street & number 9495 West Colfax Avenue [N/A] not for publication

city or town Lakewood [N/A] vicinity

state Colorado code CO county Jefferson code 059 zip code 80215

3. State/Federal Agency Certification

As the designated authority under the National Historic Preservation Act, as amended, I hereby certify that this nomination request for determination of eligibility meets the documentation standards for registering properties in the National Register of Historic Places and meets the procedural and professional requirements set forth in 36 CFR Part 60. In my opinion, the property meets does not meet the National Register criteria. I recommend that this property be considered significant nationally statewide locally.
(See continuation sheet for additional comments [].)

[Signature] State Historic Preservation Officer May 22, 1997 Date

State Historic Preservation Office, Colorado Historical Society
State or Federal agency and bureau

In my opinion, the property meets does not meet the National Register criteria.
(See continuation sheet for additional comments [].)

Signature of certifying official/Title Date

State or Federal agency and bureau

4. National Park Service Certification

I hereby certify that the property is:

- entered in the National Register
See continuation sheet [].
- determined eligible for the
National Register
See continuation sheet [].
- determined not eligible for the
National Register.
- removed from the
National Register
- other, explain
See continuation sheet [].

Signature of the Keeper Date

Carol O Shull 7-2-97

Davies' Chuck Wagon Diner
Name of Property

Jefferson/CO
County/State

5. Classification

Ownership of Property
(Check as many boxes as apply)

- private
- public-local
- public-State
- public-Federal

Category of Property
(Check only one box)

- building(s)
- district
- site
- structure
- object

Number of Resources within Property
(Do not count previously listed resources.)

Contributing	Noncontributing	
1	0	buildings
0	0	sites
0	0	structures
1	0	objects
2	0	Total

Name of related multiple property listing.
(Enter "N/A" if property is not part of a multiple property listing.)

N/A

Number of contributing resources previously listed in the National Register.

0

6. Function or Use

Historic Function
(Enter categories from instructions)

Commerce/Trade: restaurant

Current Functions
(Enter categories from instructions)

Commerce/Trade: restaurant

7. Description

Architectural Classification
(Enter categories from instructions)

Late 19th & Early 20th Century American
Movements
Other: Prefabricated Diner

Materials
(Enter categories from instructions)

foundation Concrete
walls Steel

roof Asphalt
other

Narrative Description

(Describe the historic and current condition of the property on one or more continuation sheets.)

Davies' Chuck Wagon Diner

Jefferson/CO

Name of Property

County/State

8. Statement of Significance

Applicable National Register Criteria

(Mark "x" in one or more boxes for the criteria qualifying the property for National Register listing.)

- A** Property is associated with events that have made a significant contribution to the broad patterns of our history.
- B** Property is associated with the lives of persons significant in our past.
- C** Property embodies the distinctive characteristics of a type, period, or method of construction or represents the work of a master, or possesses high artistic values, or represents a significant and distinguishable entity whose components lack individual distinction.
- D** Property has yielded, or is likely to yield, information important in prehistory or history.

Criteria Considerations

(Mark "x" in all the boxes that apply.)

Property is:

- A** owned by a religious institution or used for religious purposes.
- B** removed from its original location.
- C** a birthplace or grave.
- D** a cemetery.
- E** a reconstructed building, object, or structure.
- F** a commemorative property.
- G** less than 50 years of age or achieved significance within the past 50 years.

Narrative Statement of Significance

(Explain the significance of the property on one or more continuation sheets.)

9. Major Bibliographic References

Bibliography

(Cite the books, articles and other sources used in preparing this form on one or more continuation sheets.)

Previous documentation on file (NPS):

- preliminary determination of individual listing (36 CFR 67) has been requested
- previously listed in the National Register
- previously determined eligible by the National Register
- designated a National Historic Landmark
- recorded by Historic American Buildings Survey
- # _____
- recorded by Historic American Engineering Record
- # _____

Areas of Significance

(Enter categories from instructions)

Commerce

Architecture

Periods of Significance

1957-1977

Significant Dates

1957

Significant Person(s)

(Complete if Criterion B is marked above).

N/A

Cultural Affiliation

N/A

Architect/Builder

Mountain View Diners, Inc.

Primary location of additional data:

- State Historic Preservation Office
- Other State Agency
- Federal Agency
- Local Government
- University
- Other:

Name of repository:

Jefferson County Courthouse

Davies' Chuck Wagon Diner

Jefferson/CO

Name of Property

County/State

10. Geographical Data

Acreage of Property less than one

UTM References

(Place additional UTM references on a continuation sheet.)

1. 13 491180 4398760
Zone Easting Northing

3. Zone Easting Northing

2. Zone Easting Northing

4. Zone Easting Northing

[] See continuation sheet

Verbal Boundary Description

(Describe the boundaries of the property on a continuation sheet.)

Boundary Justification

(Explain why the boundaries were selected on a continuation sheet.)

11. Form Prepared By

name/title Frank A. Navarro & Marian Metsopoulos (Edited by S. Doggett)

organization Lakewood Historical Society date 02/07/97

street & number 1030 S. Butler Way telephone 303-980-6966

city or town Lakewood state CO zip code 80226

Additional Documentation

Submit the following items with the completed form:

Continuation Sheets

Maps

A **USGS map** (7.5 or 15 minute series) indicating the property's location.

A **Sketch map** for historic districts and properties having large acreage or numerous resources.

Photographs

Representative **black and white photographs** of the property.

Additional Items

(Check with the SHPO or FPO for any additional items)

Property Owner

(Complete this item at the request of SHPO or FPO.)

name James R. Clark & Dwayne L. Clark

street & number 9495 West Colfax Avenue telephone 303-237-5252

city or town Lakewood state CO zip code 80215

Paperwork Reduction Act Statement: This information is being collected for applications to the National Register of Historic Places to nominate properties for listing or determine eligibility for listing, to list properties, and to amend existing listings. Response to this request is required to obtain a benefit in accordance with the National Historic Preservation Act, as amended (16 U.S.C. 470 *et seq.*).

Estimated Burden Statement: Public reporting burden for this form is estimated to average 18.1 hours per response including time for reviewing instructions, gathering and maintaining data, and completing and reviewing the form. Direct comments regarding this burden estimate or any aspect of this form to the Chief, Administrative Services Division, National Park Service, P.O. Box 37127, Washington, DC 20013-7127; and the Office of Management and Budget, Paperwork Reductions Projects (1024-0018), Washington, DC 20503.

**United States Department of the Interior
National Park Service**

**National Register of Historic Places
Continuation Sheet**

DAVIES' CHUCK WAGON DINER
Jefferson County, CO

Section number 7 Page 1

DESCRIPTION

Davies' Chuck Wagon Diner, a 1957 stainless steel diner manufactured by Mountain View Diners, Inc. of Singac, New Jersey, is located in Lakewood on West Colfax Avenue (US Highway 40) at Hoyt Street. Nearby, along Colfax, are a variety of commercial strip related businesses including: retail stores, auto dealers and service centers, motels and restaurants, and office buildings.

During its 40 years of continuous operation, Davies' Chuck Wagon Diner has been well maintained and is in excellent condition. It retains a high degree of integrity in terms of location, setting, design, materials, workmanship, feeling, and association. Minor changes have not detracted from its exceptional ability to convey its historical and architectural significance. Over the years, the owners have made a concerted effort to maintain and retain original components. The diner and its freestanding, 36' tall, contributing neon lighted sign remain much as constructed in 1957. (See Photograph #3 and Historic Photograph #6A). Together, they are a highly visible and well known landmark along the West Colfax Avenue commercial corridor.

The diner, a 22' x 50' rectangle, with a vestibule extending from the front, faces south towards Colfax. It is located on a .466 acre, northeast corner lot that measures 100' in width and 200' in depth. Most of the lot is asphalt paved, with most of the parking located at the rear. A concrete block storage room, added in 1978, extends from the north wall. The diner, which has a basement, is set back 33'4" from the Colfax curb line and is centered, east to west, on the lot. A concrete patio, added in 1994, is located on the south and facilitates ADA access.

The 36' high contributing sign is located 10' south and 6' west of the diner. It is supported by two 12" diameter pipe columns, set 4' apart in concrete, which extend up between the two 16 gauge metal sides of the sign. The edges are boxed to protect the internal electrical wiring. The 240 square foot sign faces east and west. Between the pipe columns, there are three small, oval signs reading "Pancakes," "Steaks," and "Fried Chicken." The main vertical section, measuring 8' wide by 16' high, begins 11' from the ground. Its lower sign, measuring 4' high by 16' wide, starts 2' from the bottom of the main section, is outlined with eighty 25 watt lamps on each side, and contains the word "Diner". The upper sign, containing the word "Davies" measures 2' high by 7' wide and is 1' from the top of the main section. The words "Chuck Wagon" are located in the space between these signs. All of these words are outlined with neon tubing. A 17' cowboy, wearing an apron, stands on the south edge of the lower sign, with one hand pointing to "Davies" and the other hand directing customers to the diner. The cowboy is illuminated by spot lights. The detailed art work on the cowboy is in need of some restoration.

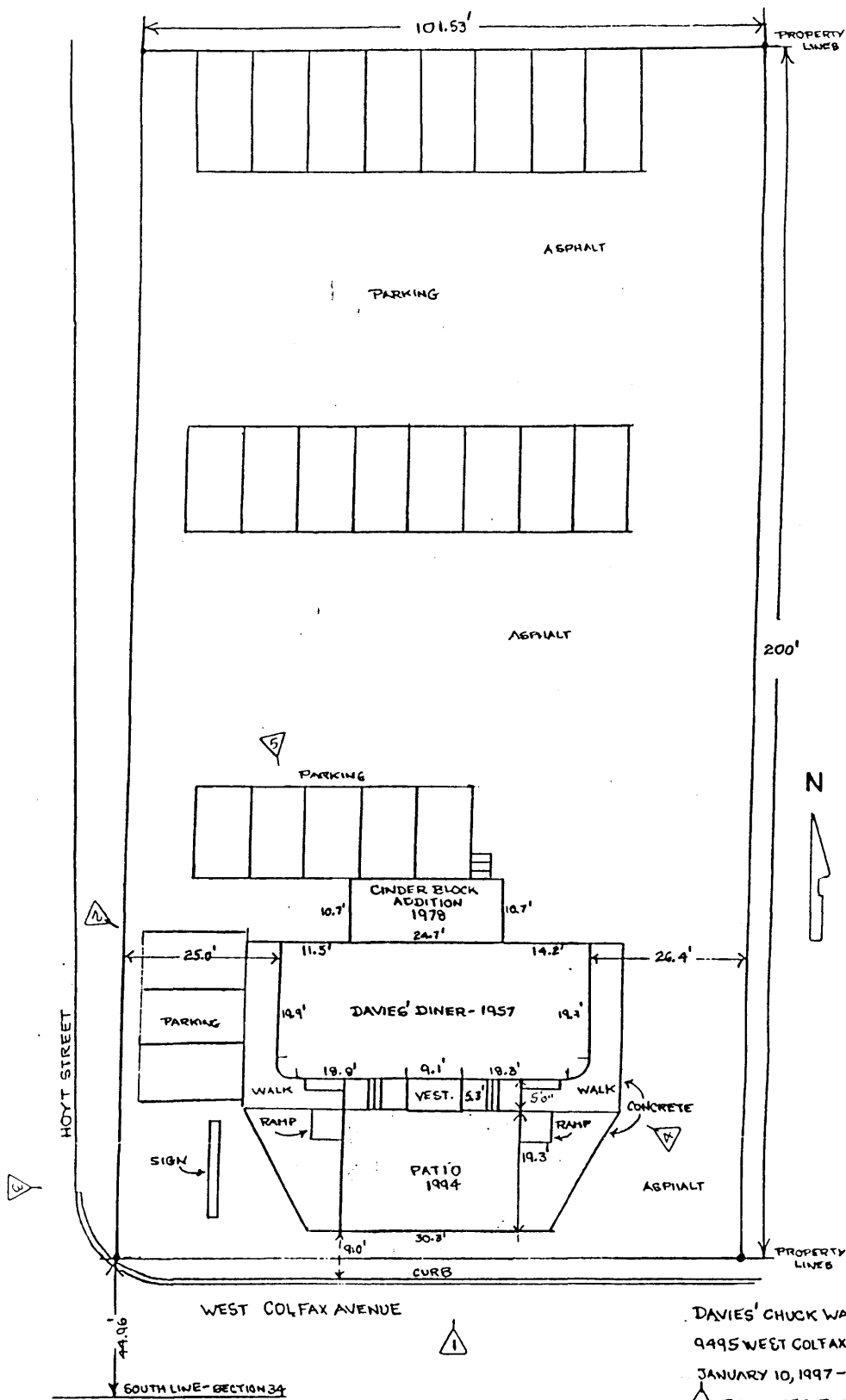
United States Department of the Interior
National Park Service

National Register of Historic Places
Continuation Sheet

DAVIES' CHUCK WAGON DINER
Jefferson County, CO

Section number 7 Page 2

SITE PLAN



DAVIES' CHUCK WAGON DINER
9995 WEST COLFAX - LAKEWOOD, COLO.
JANUARY 10, 1997 - BY F.N.
△ INDICATES PHOTOVANTAGE POINT

United States Department of the Interior
National Park Service

National Register of Historic Places
Continuation Sheet

DAVIES' CHUCK WAGON DINER
Jefferson County, CO

Section number 7 Page 3

Exterior

The diner consists of two sections that were joined together on the site. Blond brick fills the area below the stainless steels walls and forms low planters on the south. The brick is 12" in height on the south and increases to 20" as the grade slopes to the rear.

The roof of the diner slopes from its center flat section to the outer edges. The roof is composed of $\frac{3}{4}$ " plywood fastened to 4" steel rafters and is covered with layers of felt and tar. Along the roof's edge is a continuous gutter with stainless steel downspouts on the east and west ends. The heating and cooling duct, three exhaust fans, and three evaporative coolers are located on the roof. They are partially hidden by a 27" stainless steel parapet wall set back 5' from the roof's edge on the west, south, and east. This wall repeats the same pattern which is above the west, east, and south windows.

A 5'4" x 8'8" vestibule is centered on the south elevation. It has 3' aluminum framed, glass doors on the east and west and a 47" x 6' window on the south. Concrete steps lead to the vestibule from the 5' wide sidewalk next to the building. The corners have a 16" radius curve of polished stainless steel extending 9'6" to its flat roof. There are triangular shaped canopies, with stainless steel edges, over the doors. On top of the roof stands a life-size brown fiberglass horse that was installed in the early 1960s.

The west, south, and east walls of the diner are somewhat similar in appearance. The stainless steel is attached to plywood sheathing so that very few nails show. The bottom strip folds under the edge of the plywood where it is nailed. The top of each strip has a nailing section which is then covered by the next upper strip. At the top of the primary 4' band is a cap strip.

There are 12 large fixed windows, several of which extend across the south facade. Most of the windows measure 47" high x 53" wide and have double insulated glass. There are two uninsulated, curved windows which have a 24" radius at the southeast and southwest corners. The windows have stainless steel molding with screws so that the glass may be replaced. The spaces between windows have a mullion cover of stainless steel that snaps into place. Above the windows, is a steel band that is 27" high which is made up of two horizontal rails of stainless steel separated by a 3" red baked enamel steel strip on both the top and the bottom of the band. Between the rails is stainless steel formed in a corrugated vertical "V" pattern.

The 24" radius curved southeast and southwest corners of the diner have a 6" band of formed stainless steel at the bottom, and a 48" wide piece formed into a running "V" pattern as it rounds the curve. The pattern is repeated for another 27" above the curved glass. Scroll shaped cap strips border both sides of this top section.

As shown in Photograph #1, there is a 4' wide band of stainless steel below the windows that contains four 6" wide strips of stainless steel alternating with three 3" strips of red baked enamel on steel. The

United States Department of the Interior
National Park Service

National Register of Historic Places
Continuation Sheet

DAVIES' CHUCK WAGON DINER
Jefferson County, CO

Section number 7 Page 4

6" strips were hand formed into a streamlined rail design which begins with a quarter-circle shape, 1" in depth, is followed with a flat space, and ends with a reverse quarter-circle shape at the bottom. The red enamel pieces separate the 6" bands.

The west wall, as shown in Photograph #2, has three windows and one solid panel near the center with a sunburst design. The solid panel marks the location of an interior mirror.

The east wall, as shown in Photograph #4 has one large window and a 19" x 26" casement window. The remainder of the wall has five stainless steel panels that are 47" high. These panels were formed into a sunburst pattern with a hand press.

The north wall, as shown in Photograph #5, has 16" wide x 9'6" high panels of aluminum covering its 50' length. Gutters and downspouts are mounted on the wall. On the east end, there are two 24" square and one 26" x 37" casement windows. Electric and gas connections are on the west. Along the bottom, there is 1/4" angle iron between the brick base and the aluminum panels.

The stairs to the basement were originally located on the north, outside the building. At an unknown date, a small structure was built to cover the stairway. It was removed in 1978 when a one-story addition measuring 24'8" long from east to west and 10'5" wide from north to south was constructed.

The 1978 addition is set on an 8" foundation of poured concrete. The low pitched shed roof has wood joists that are covered with plywood and rolled roofing. The exterior walls are of 8" concrete blocks. The floor is 4" thick concrete, and the ceiling is sheet rock. There are 24" x 35" aluminum sliding windows on the north and west. On the north, concrete steps with handrails lead up to a 3' steel entry door.

The addition contains the stairway to the basement and provides space for bread racks, freezers, lockers, shelves, a sink, patio umbrellas, and the fire extinguisher system for the kitchen grill hoods. On the south wall, a 3' door, at its original location, leads into the diner.

In 1994, a poured concrete patio was added on the south. It measures 19'4" x 30'. Including the sidewalk, its south edge is 24'4" from the diner. The patio sits 20" above the surrounding concrete area. On the east and west, in addition to the steps leading to the vestibule, there are 4' wide ramps, with handrails, for wheel chair access. The patio is surrounded by wrought iron fencing and accommodates five 4' diameter umbrella tables.

Interior

Inside the vestibule there is a 3' wide entrance into the diner. The original door was removed to allow more space for wheelchairs. The vestibule ceiling is white Formica, and the walls are embossed stainless steel. The floor is grey and white mosaic tile.

**United States Department of the Interior
National Park Service**

**National Register of Historic Places
Continuation Sheet**

DAVIES' CHUCK WAGON DINER
Jefferson County, CO

Section number 7 Page 5

Above the entrance, a metal tag identifies the diner as Serial Number 516 and the manufacturer as Mountain View Diners, Inc. of Singac, New Jersey. To the left, inside the entrance door is the cashier's stand. The current owners have installed a 1944 NCR cash register, a family keepsake. The register stand wall has a curved section of stainless steel imprinted with a diamond pattern, as shown in Photograph #19. The order counter is directly in front of the entrance and has a fluted roll of stainless steel above and across the length of the order shelf opening. Above the roll is the original clock, centered between fluted roll accent pieces. The wall below is covered with stainless steel imprinted with geometric patterns, as shown in Photograph #9. The floor of the diner is $\frac{3}{4}$ " square mosaic tile laid in a pink and grey tumbling block design.

The efficient, compact kitchen measures 11' x 28' and is centered at the rear. Open aisle space is less than 3' wide, but there is room for as many as three cooks and a dishwasher to work at one time. The east end is filled with a dishwasher, pot sink and dish tables. The west end has a 6' x 6'6" walk-in refrigerator, duct space, shelves for hot beverages, and a small soda fountain. A center island contains a steam table, freezer, refrigerator and plate storage. The north wall is covered by the range and oven, chefs table, and slicer, and a door into the rear addition. The south wall extends out into the dining area and contains the serving and order stand, and a grill and cold table. The original grill was replaced in the 1970s. The range and oven were replaced at an unknown date. The floor behind the front grill is 6" square brown ceramic tile. The walls and ceiling are the original white Mirawall except for the stainless steel behind the cooking areas. The range and grill have stainless steel hoods. Dry chemical fire extinguisher heads are located in the hoods. There is a 30" square skylight extending up from the 8'6" high ceiling which has windows that may be opened. The lighting is provided by single-light fluorescent strips.

At the front of the diner, the east half is filled with the original 17' eating counter that is 28" wide and has 11 stools. There is a corner booth and two tables. The counter curves in a half circle on the east end. At the rear, there are shelves under the counter top. On the wall, behind the counter there is a large display case, a refrigerator for dairy products, shelves for miscellaneous items, and a Lowerator dish cabinet. The back wall is covered with stainless steel which has been formed into sunburst patterns. The stools have stainless steel bases with flat 13" diameter round stationary seats covered with brown Naugahyde that replaced the original pink. The original, off-white Formica counter top has a pattern of pink and grey amoeba and boomerang shapes. It is somewhat worn on the elbow rest edges. Above the floor, under the front of the counter is an 8" high x 12" wide pink and grey tiled foot rest with stainless steel nosing.

The large fixed windows fill most of the east and south upper walls. Between the windows, spaces are covered by stainless steel mullions which snap into place in channels, providing a clean look with no screws or fasteners showing. Window miniblinds are tan. Over the years, several sets of blinds have covered the windows, replacing the original light grey metal blinds which had pink tapes and nylon cords.

United States Department of the Interior
National Park Service

National Register of Historic Places
Continuation Sheet

DAVIES' CHUCK WAGON DINER
Jefferson County, CO

Section number 7 Page 6

A 3' wall under the windows is covered with grey and off-white leather-grained Formica panels. The panels are 1/4" masonite faced with Formica and were pre-formed in the factory. An "H" channel strip is nailed to the plywood walls and the panels are slid into its grooves, one at a time, working from one end of the diner to the other, with a 1/2" aluminum cap strip covering the joints to eliminate any sign of nails or screws. Two courses of grey 4" x 4" tiles form a baseboard.

The restrooms are located in the northeast corner. A door leads into a foyer area with two doors leading to the restrooms. The men's restroom has blue fixtures and 4" square blue tile to the grey Formica ceiling. The floor has 2" square blue and grey mosaic tiles. The women's restroom has one pink sink. The other non-original fixtures are white, and the walls are covered with 4" square pink tile to the grey Formica ceiling. The floor is 2" square pink and grey mosaic tile. Each restroom has a 2' x 2' aluminum casement window with obscure glass. Both had electric hand dryers that have been removed.

The west half of the diner contains 10 booths and table seating. The 11' x 11' northwest dining area has a dropped ceiling with recessed 1' x 4' fluorescent light panels. In the ceiling, there are five hot or cold air diffusers and three speakers. The large fixed windows continue around the south and west walls to the rear. The north and east walls are covered with rose-gold mirrors which appear to enlarge the area. A mirror covers a 38" section of the west wall and another mirror is over the booth to the right of the kitchen doorway. Each table has a Seeburg juke box unit that replaced the original Wurlitzer juke boxes in 1977. The booths are covered with tan Naugahyde which replaced the original pink. The table tops are the original off-white Formica pink and grey amoeba and boomerang pattern. The walls and ceilings are grey and off-white leather grained Formica. There is a 60" refrigerated pie and cake display case next to the kitchen doorway.

The upper walls and ceiling of the diner are complex, as shown in Photograph #13. Above the windows is a concealed light trough for fluorescent lights which is faced with a 3" wide pink enameled stainless steel strip at 6' 8" from the floor. Original pre-formed Formica extends to 7' 8" into a round corner and then goes up vertically forming another light trough. It then extends to the flat portion of the ceiling which is 8' 6" from the floor. This configuration forms a monitor-like ceiling without the windows that were common in early day diners.

Structural Details

The diner's steel frame is a welded structure, with any wooden members acting only as nailers. Each 11' x 50' section weighs approximately 19 tons. The frame for each section begins with two 12" "I" beams that are 5" wide which support one-half of the diner. Beams are placed at the outer edges. The two placed in the center are 44" apart. The diner may be moved on rollers. Two 8" "I" beams are welded between the two 12" "I" beams at each end of each section, allowing space below for jacking. The 12" "I" beams are 12" shorter than the diner to leave space for the brick wall that surrounds the

**United States Department of the Interior
National Park Service**

**National Register of Historic Places
Continuation Sheet**

DAVIES' CHUCK WAGON DINER
Jefferson County, CO

Section number 7 Page 7

base of the diner. This wall covers all the structural supporting steel. Concrete piers, in the basement, support the 12" beams, and the concrete basement walls support the ends.

The 12" "I" beams run east and west. On top of these beams are 4" x 1½" steel "U" channels, turned on edge and welded to the 12" "I" beams on 24" centers for the full length. These channels run north and south in each section of the diner. At the connection point, there is a 4" channel iron set on edge which is used to bolt the two halves together. Also, 4" "U" channels are used around the outer edges. On top of these, is welded a ⅛" steel plating that covers both sections.

The walls of the diner consist of 3" "U" channel studs with the flanges turned out. They are welded to the ⅛" steel floor plates. These vertical 7' "U" channels are located on 18" centers, or between windows and where needed. Wood nailers are bolted to the inside web of the "U" channels or on their outer edges. The 3" "U" channels are also used for the top horizontal plate with the flanges facing down and welded to the channel studs. This top plate is filled with two 2" x 4" nailers. On top of the plate, 4" "U" channels, turned on edge, are used for the roof rafters. They are installed on 30" centers. The rafters are angled towards the center to allow for the monitor-like ceiling and then are placed flat at the center. Wood nailers, 2" thick, are bolted to the sides of the rafters for support of the many angled ceiling.

The walls and ceiling of the diner are filled with electrical and sound wiring, plumbing, wood cleats, and 2" fiber glass insulation. The walls are covered with ½" plywood on both the inner and outer sides. The floor is 2" thick poured concrete. Openings are provided through the floor for access to the basement equipment. The vestibule was fabricated separately and attached on site.

Plans for the foundation and basement layout were furnished by Mountain View Diners, Inc. so that the basement walls and all support points were properly located. More than 88 cubic yards of concrete were used. Concrete caissons for footings were poured at load points. The footings measure 16" wide x 12" thick. The walls are 12" thick concrete, reinforced with rebar. Concrete piers placed 15' from each end serve as supports for the diner's "I" beams.

Footings and foundation walls were also constructed for the 5' x 8' vestibule and the rear 4' x 22' stairwell. The walls are 8" thick, and the stairs were constructed up to the diner level. The stairwell is outside the basement walls. The basement walls are 7' high, and the floor is 4" thick. On the east and west, there are two windows. The 15" x 31" windows open from the top and swing downward.

The sewer system was installed under the basement floor and includes floor drains and sewer to the outside grease trap on the north. All sewer piping is cast iron. Water pipes are copper. The electrical wiring is contained in thin wall conduit and steel enclosures.

**United States Department of the Interior
National Park Service**

**National Register of Historic Places
Continuation Sheet**

DAVIES' CHUCK WAGON DINER
Jefferson County, CO

Section number 7 Page 8

A dry food storage room measuring 8' x 15' is in the southwest corner of the basement. An office measuring 8' x 15' is located in the southeast corner. The center section contains a hideaway Seeburg juke box master unit with cabling going up to the diner. Also in this area is a large ice machine, refrigerators and freezers. A 76-gallon hot water heater is in the northeast corner. The northwest area is filled with three refrigeration compressors and three soft drink tanks, all with piping up to the diner. A large 40-year-old Frigidaire combination furnace and air conditioner is also in this area. This unit continues to heat the diner through a 24" square duct to the roof duct system. Since the unit proved inadequate for cooling, it has been supplemented with roof top evaporative coolers. The basement walls have been painted white; the ceiling remains unpainted. Incandescent and fluorescent fixtures provide minimal lighting.

United States Department of the Interior
National Park Service

National Register of Historic Places
Continuation Sheet

DAVIES' CHUCK WAGON DINER
Jefferson County, CO

Section number 8 Page 9

SIGNIFICANCE

Davies' Chuck Wagon Diner is eligible for listing in the National Register of Historic Places under Criterion A in the area of Commerce and under Criterion C in the area of Architecture. The property meets criterion consideration "G" for exceptional significance as a particularly well preserved example of a streamlined, prefabricated stainless steel diner, a specific diner type that enjoyed considerable popularity during the middle years of the 20th century. Historically found in greater numbers in the eastern United States, even at the time of its completion in 1957, Davies' Chuck Wagon Diner represented a rare western example of the type. Today, it is believed to be the only extant example in Colorado. The diner, with its contributing sign, stands as a prominent and well known landmark along the West Colfax Avenue commercial corridor.

Criterion A - Commerce

Davies' Chuck Wagon Diner is associated with roadside commercial development during the second half of the 20th century. Completed in 1957, on Colfax Avenue (US Highway 40), then the main east/west highway through the Denver metropolitan area, the diner quickly became a popular and profitable eating place. The Period of Significance, 1957-1977, encompasses the years that the property was under the ownership and operation of the Davies family. Until 1971, the diner was open 24 hours a day. As was typical of diner operation, members of the Davies family all took part in sharing the workload. Of particular interest, is the fact that in 1958 Col. Harland Sanders awarded the Davies what is believed to be the first Colorado franchise for Kentucky Fried Chicken.

Criterion C - Architecture

Davies' Chuck Wagon Diner remains at its original location as a virtually intact example of prefabricated stainless steel diner construction. As such it is an exceptional representative of a diner type that enjoyed considerable popularity during the middle of the 20th century. Its streamlined design is well executed in intricately patterned stainless steel. The stainless steel on the exterior and interior is well preserved, and most of the other interior finishes and furnishings are original. In addition, the diner's freestanding, neon lighted, cowboy sign is an excellent example of mid 20th century signage specifically designed to entice prospective customers to patronize commercial establishments located along major highways.

The diner was one of the last produced by Mountain View Diners, Inc. Mountain View fabricated "stylish and unusual diners" before and after World War II. From 1939 to 1957, the company aggressively marketed its products, often outsold other manufacturers, and shipped its prefabricated diners across the country.

United States Department of the Interior
National Park Service

National Register of Historic Places
Continuation Sheet

DAVIES' CHUCK WAGON DINER
Jefferson County, CO

Section number 8 Page 10

Historic Background

Diners are a distinctive architectural type, and intact examples representative of their period of construction are becoming increasingly rare. Diners first became popular in the late 1800s and early 1900s. By the mid 1900s, they had evolved from converted, horse-drawn trolley cars into prefabricated structures, many of which had gleaming stainless steel skins. *Historic Preservation*, in a September 1979 article, estimated that of the 6,000 prefabricated diners existing in 1950, only half still remained in 1979. At the present time, their numbers continue to decline. Some have been completely restored; many no longer exist. In many cases, their exteriors have been covered, obscuring their original design and materials. Some have even been moved to locations in other countries. In 1978, the 1941 Modern Diner in Pawtucket, Rhode Island became the first of only a hand full of diners now individually listed in the National Register of Historic Places.

Construction of the Diner

William Lyman Davies, the original owner of Davies' Chuck Wagon Diner, was a supervisor of restaurants for Walgreen Drug Stores. While traveling in the eastern United States, Davies had seen many diners, and his wish was to have one of his own. In the mid 1950s, after 21 years with Walgreens, he decided to pursue his dream. Having lived in Denver in 1947, he was familiar with the area, liked it, and eventually made a trip back to hunt for a good location. He was especially interested in West Colfax Avenue (U.S. Highway 40), the only east-west highway through the area at the time. Tourists and truckers, all potential customers, constantly traveled the route.

Around the same time, Mountain View Diners, Inc. of Singac, New Jersey, had a vigorous sales campaign going on throughout the United States. The founder, Henry Strys, had leased a piece of land on the northeast corner of Hoyt Street and West Colfax Avenue. Strys advertised for people interested in placing a diner at this location. He defaulted on the lease and the land reverted to the owner, Morrie F. Brothers.

In 1956, Lyman Davies, after thoroughly researching the purchase of a prefabricated diner, ordered a Mountain View modified stainless steel model similar to one used at the 37th National Restaurant Show in Chicago, Illinois. A diner of this type could be constructed in 15 weeks after final plans were approved. This included the installation of the latest in food service equipment for the operation of a compact, efficient, highly profitable eating establishment. One of the Davies sons, Brent, has commented that the diner is the ideal size. One fry cook, one preparation cook, and a dishwasher can operate the kitchen which is laid out so that everything is within reach.

The approved plans were received in Denver in February 1957, at the office of George W. Littrell, the real estate agent for the site at Hoyt and West Colfax. Plans for the foundation and basement were also provided by Mountain View, as the diner supports had to fit its steel structure. Davies leased the 100' x 200' site, and the work started on both the site and the diner. For a period of three months, he stayed

United States Department of the Interior
National Park Service

National Register of Historic Places
Continuation Sheet

DAVIES' CHUCK WAGON DINER
Jefferson County, CO

Section number 8 Page 11

at the Colfax Motel while directing work on the project. Davies spent \$92,000 for the diner and another \$3,600 for shipping. With the cost of the land, the total came to more than \$150,000.

The Davies family, then still living in Peoria, Illinois, made the diner a family project and discussed its name. Each offered suggestions until they decided on Davies' Chuck Wagon Diner. Davies, his wife, Helen, the two girls, Judy and Nancy, and the two boys, Dennis and Brent, also designed the 36' sign that has become so famous as a landmark on West Colfax Avenue. Members of the family liked the western theme, and they designed a huge cowboy with his apron on, ready to serve hungry folks. The sign was installed prior to the completion of the diner.

The diner was shipped from New Jersey by rail in two 11' x 50' sections. The vestibule was shipped separately. The Weicker Transfer and Storage Company, experts in moving heavy equipment, loaded the sections onto lowboy trailers and transported them to the site. Using a large crane, they set the sections in place within two days. This included the equipment in the basement. The two sections were bolted together, utilities connected, and all the necessary finish work was completed. This included brickwork around the diner's base and the brick planters at the front. Many connections were made between the basement and the diner for electrical, plumbing, refrigeration lines, and duct work.

Operation of the Diner

The period of significance begins in 1957 when the diner arrived by rail in Denver and extends to 1977 when Lyman Davies retired and sold the establishment.

The Davies family arrived in Jefferson County in June 1957 and lived at 2460 Miller Street. The diner opened for business on June 21, 1957. Within two weeks it was packed, especially at lunch time, when lines formed around the building. Customers came from far and wide. Parked semi-trucks were lined up on West Colfax Avenue. The maximum capacity was 57. In addition to truckers and tourists, local residents and employees of Colfax businesses frequented the diner. The whole family took turns working there, allowing for the 24-hour service which continued for 14 years. The girls worked lunch hours; the others worked 12 hour shifts with little rest in between. The Davies provided a personal touch for their customers. Waitresses were required to learn customers' names after their second visit. Davies claimed he could remember 99% of his customers' names.

Davies designed the menu. Colorado registered cattle brands formed the border. The original breakfast menu advertised two eggs for 40 cents and the Chuck Wagon Breakfast of two eggs, double thick ham steak, fried potatoes, toast, and all the coffee you could hold for 99 cents. Other items on the menu were the Ranch Hands Breakfast, Buckaroo Special, and the Wranglers Breakfast. Extra large "AA" eggs were always used. In order to obtain "golden malted pancake mix," it was necessary to buy an entire truck load from Michigan. The dinner menu listed a large T-bone steak dinner for \$2.85, fried jumbo shrimp for \$1.25, and smoked loin pork chops for \$1.35.

**United States Department of the Interior
National Park Service**

**National Register of Historic Places
Continuation Sheet**

DAVIES' CHUCK WAGON DINER
Jefferson County, CO

Section number 8 Page 12

While traveling around the country with Walgreens, Davies had met Col. Harland Sanders in Kentucky and remembered his tasty chicken. Later, Col. Sanders' restaurant in Corbin, Kentucky closed because the property was needed for new highway construction. Subsequently, the Colonel traveled the country promoting his products and eventually started the Kentucky Fried Chicken Company.

Within one year of the diner's opening, Sanders came from his Corbin Kentucky Cafe to show the Davies family how to cook his chicken. The Davies were granted the first franchise in Colorado for Kentucky Fried Chicken and continued buying the ingredients until the early 1960s. Sanders picture was on the original menu along with the registered trademark of Kentucky Fried Chicken, copyrighted in 1954 by Col. Sanders. Colorado's first freestanding Kentucky Fried Chicken store was built at West 8th Avenue and Wadsworth Boulevard in 1960.

Lyman Davies was a lover of horses and a member of the Jefferson County Sheriff's Posse. He raised horses on land near O'Hayre Court off 32nd Avenue. In the early 1960s, Lyman acquired the large fiber glass horse that stands watch atop the vestibule of the diner. A customer, Mr. Pruewitt of Pruewitt Manufacturing Company, which manufactured fiber glass animals, had the horse in his truck. After much discussion and trading, the Davies became the owners. The life-size brown horse with white socks has more than once been ridden by an inebriated passerby.

In 1971, the 24-hour service was discontinued and for the first time it was necessary to install locks on the doors. Brent Davies, recalls a night when he inadvertently left a man in the diner's restroom. The man was able to call the police who called Brent.

In 1977, after 20 years of ownership, the Davies family sold the diner to Clayton Lee. None of the younger Davies wished to continue operating it, and Lyman was forced to retire due to poor health. While the diner had been profitable, operating it was hard work, and a family member always needed to be present during open hours.

Clayton Lee ran the business until 1984. By then, the large T-bone steak dinner's price had risen to \$3.95. During Lee's ownership, the original metal blinds were replaced with woven wood ones. The seat coverings were changed to tan and brown from the original pink, and the Wurlitzer juke boxes at the tables were changed to Seeburgs.

In 1984, Jim and Dwayne Clark became owners and operators. Jim had been a restaurant operator in the past. Within a short time, they became embroiled in what became a long fight with the City of Lakewood. According to the Lakewood's 1979 sign code, rooftop displays such as the horse and any sign more than 100 square feet in size were outlawed. Obviously, the code did not permit a 36' tall, freestanding 240-square-foot cowboy sign that was outlined in neon.

The previous owner, Clayton Lee, had been informed of the code violations but thought he had 15 years to correct the situation. The Board of Adjustment turned down a request for a variance. Subsequently,

**United States Department of the Interior
National Park Service**

**National Register of Historic Places
Continuation Sheet**

**DAVIES' CHUCK WAGON DINER
Jefferson County, CO**

Section number 8 Page 13

the Clarks went through the District Court and the Colorado Court of Appeals without any success in reversing the Board of Adjustment's decision. The Colorado Supreme Court was to be next.

Lawsuits continued until 1988 when the public and city council members became involved in an effort to preserve the horse and sign. City Councilman H. W. "Scat" Scatterday, whose father had died in the diner in July 1957, and Councilman Dennis Mateski pushed for an ordinance that would give the diner historical status. The local newspaper, the *Lakewood Sentinel* printed a letter to the editor remarking, "To my knowledge, that horse has not bucked, neighed nor soiled the city streets. Perhaps it's too countrified or unsophisticated for our city fathers."

Finally, a special use permit was issued on December 21, 1988 designating Davies' Chuck Wagon Diner as an historic place, thereby permitting the diner to keep its horse and sign. Today, they remain in place as examples of urban art and a tribute to Americana and 1950s nostalgia.

During the Clarks ownership the diner has become quite popular as a place to film movies and commercials. A cigarette commercial for the Brown and Williamson Tobacco Company, made for showing in Europe, portrayed a motorcycling free spirit traveling across the West. Californians involved in making this commercial tried with difficulty to locate an authentic looking diner and felt fortunate to find Davies. In May 1990, a scene for the CBS movie "Archie's Wife" starring Jill Eikenberry and Michael Tucker was filmed at the diner. In April 1996, part of another movie, "Going West", starring Danny Glover and Dennis Quaid was filmed there. The diner has also been used as a backdrop for the movie "Starman," a CBS Movie of the Week and commercials for the Colorado Lottery and others.

During the Clark's ownership, they have replaced some of the equipment, added the front patio, and continued the normal maintenance. They are intent on preserving the diner and as many of its components as possible. The Clarks continue the Davies' tradition of serving a good meal at a reasonable price, and business continues to be brisk.

United States Department of the Interior
National Park Service

National Register of Historic Places
Continuation Sheet

DAVIES' CHUCK WAGON DINER
Jefferson County, CO

Section number 9 Page 14

BIBLIOGRAPHY

Auer, Michael J. *The Preservation of Historic Signs*. Preservation Briefs, No. 25. U.S. Department of the Interior, October, 1991.

Baeder, John. *Diners*. New York: Harry N. Abrams, Inc., Revised and Updated, 1995.

Grantor-Grantee Records on file at Jefferson County Courthouse Record Room.

Gutman, Richard J. S. *American Diner*. New York: Harper and Row. 1979.

Gutman, Richard J. S. *American Diner Then and Now*. New York: Harper Collins Publishers, Inc. 1993.

Kelley, Guy. *Rocky Mountain News*, December 18, 1988.

Liebs, Chester. *Main Street to Miracle Mile, America's Roadside Architecture*. Boston: Little, Brown and Co., 1985.

Petrovski, Leslie. *Denver Magazine*, May 1985.

Savage, Beth L. "Disappearing Ducks and Other Recent Relics," *CRM*. Volume 16, No. 6, 1993.

U.S. Land Office Tract Book, beginning in 1861. On file at National Archives, Denver Federal Center.

Wilcox, Patricia K. *Lakewood, Colorado-An Illustrated Biography*. Locally published by Lakewood's 25th Birthday Commission. Copy on file at Jefferson County Library.

Interviews

Recorded interview of Brent W. Davies, son of former owners, Lyman and Helen Davies, by Frank A. Navarro January 16, 1997. Tape on file at The Lakewood Historical Society.

Telephone conversation, January 23, 1997, with Daniel Noiseux of Montreal, Canada, owner and co-restorer of the Le Galaxy Diner in Montreal, a twin to Davies' Chuck Wagon Diner.

Telephone conversation, January 17, 1997, with Richard J. S. Gutman of West Roxbury, Massachusetts, author and co-restorer of the Le Galaxy Diner.

United States Department of the Interior
National Park Service

**National Register of Historic Places
Continuation Sheet**

Section number 10 Page 15

DAVIES' CHUCK WAGON DINER
Jefferson County, CO

GEOGRAPHICAL DATA

Verbal Boundary Description

The south 205' of Lot 3, Block 3, Beverly Heights Subdivision, City of Lakewood, Jefferson County, Colorado, except the south 5' which was deeded to the Department of Highways, State of Colorado on March 15, 1965.

Verbal Boundary Justification

The boundary includes the parcel of land historically associated with the property.

United States Department of the Interior
National Park Service

National Register of Historic Places
Continuation Sheet

DAVIES' CHUCK WAGON DINER
Jefferson County, CO

Section number Additional Materials Page 16

PHOTOGRAPH LOG

Photographs 1-22 were taken on January 21, 1997 by Frank A. Navarro. Negatives are on file at The Lakewood Historical Society, 797 South Wadsworth Boulevard, Lakewood, CO.

1. Diner, south elevation, facing north
2. Diner, west elevation, facing east
3. Diner, sign, west elevation and Colfax Avenue (US Highway 40), facing east
4. Diner, east elevation, facing northwest
5. Diner, north elevation and addition, facing south
6. Basement, stores, facing south
7. Basement, stores and Seeburg master juke box, facing west
8. Vestibule and entrance, facing west
9. Counter, back bar, order station, facing northwest
10. East inside, counter and front entrance, facing southeast
11. Southwest dining area, facing south
12. Front dining area, facing west
13. Counter seating, back bar, facing west
14. Kitchen, beverage corner, facing west
15. Kitchen, grill, facing west
16. Kitchen, grill, facing east
17. Kitchen, range, facing east
18. Rear storage room, facing west
19. Stainless steel detail, cashier's booth, facing west
20. Counter, stool and floor detail, facing east
21. Women's restroom, facing north
22. Men's restroom, facing north

**United States Department of the Interior
National Park Service**

**National Register of Historic Places
Continuation Sheet**

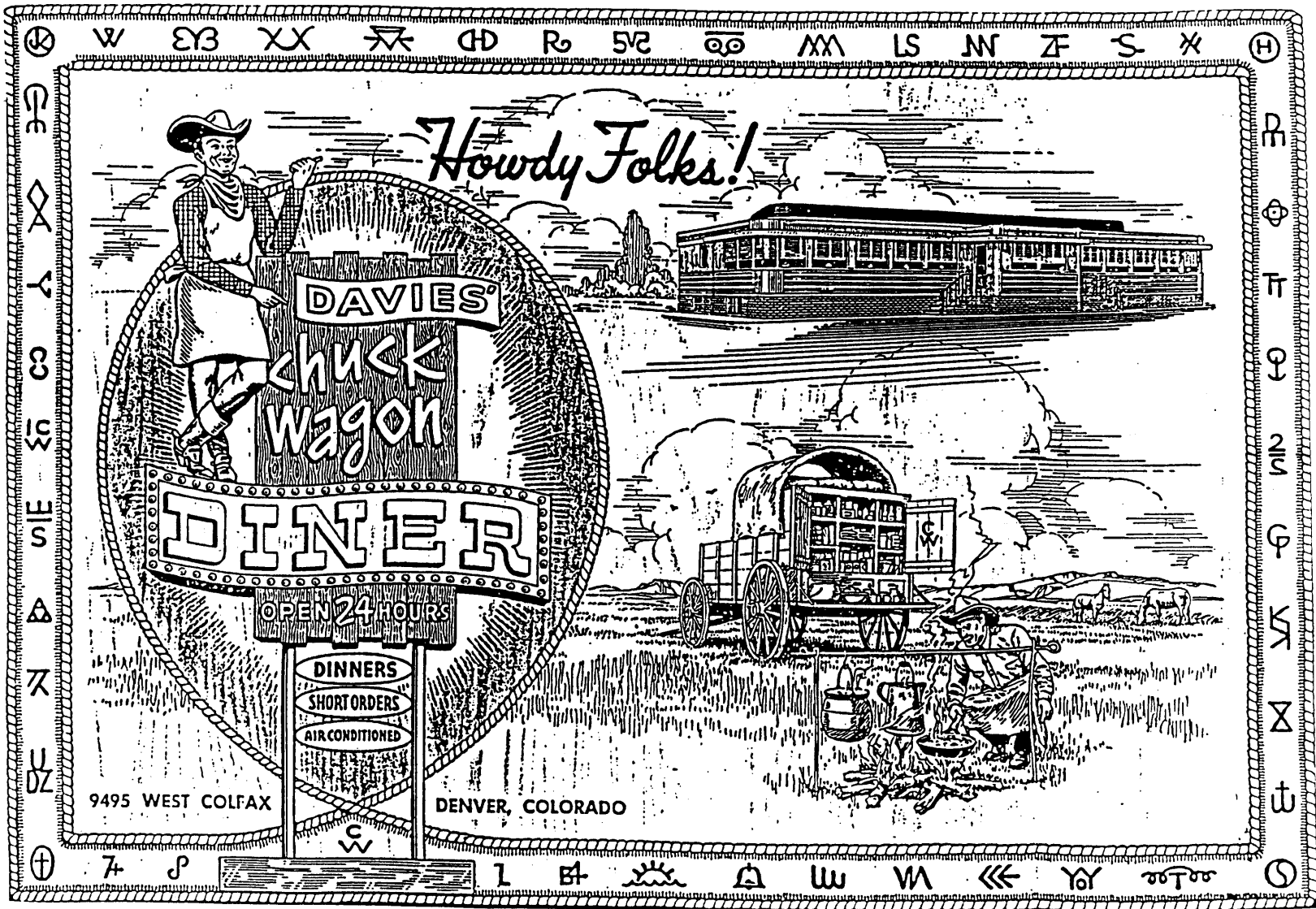
DAVIES' CHUCK WAGON DINER
Jefferson County, CO

Section number Additional Materials Page 17

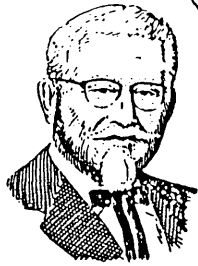
HISTORIC PHOTOGRAPH LOG

Photographer of photographs 1A-6A is unknown. Negatives are located at The Lakewood Historical Society, 797 South Wadsworth Boulevard, Lakewood, CO.

- 1A. Davies' Diner site prior to start of construction, farm in background, facing north, 1957
- 2A. Davies' Diner site showing caissons and foundations, 1957
- 3A. Davies' Diner site, preparing to set one section of the Diner, 1957
- 4A. William Lyman Davies, owner of Davies' Chuck Wagon Diner, shown in kitchen, late 1950s
- 5A. Diner, sign, horse, facing north, 1960s
- 6A. Diner sign, facing east, late 1950



DAVIES' CHUCK WAGON DINER
 JEFFERSON COUNTY, COLORADO
 MENU COVER



Col. Harland Sanders

Colonel Sanders' **Kentucky Fried Chicken** Tender and Tasty

AS PREPARED AND SERVED AT COL. HARLAND SANDERS' CORBIN, KY., CAFE.

"I tasted Col. Sanders' Chicken, liked it and brought the recipe back with me." **CHUCK WAGON** — W. L. Davies

It really tastes as good as you always expect chicken to taste.

DINNER CONSISTS OF: Three Pieces of a Two-Pound Chicken, a Mound of Fluffy Whipped Potatoes, Topped with Zesty Chicken Cracklin Gravy, a Crisp Garden Salad with French Dressing and Hot Roll with Butter.

1.25

Western Aged Steaks



- Large T-BONE STEAK, Drawn Butter 2.85
- Small T-BONE STEAK, Drawn Butter 1.95
- Large SHORTCUT SIRLOIN STEAK 2.55
- Small SHORTCUT SIRLOIN STEAK 1.75
- GRILLED BEEF TENDERLOIN STEAK 1.85

Steak Dinner Includes:

Choice of French Fried Potatoes or Mashed Potatoes
Crisp Garden Salad or Any Other Side Dish
Rolls and Butter

DAVIES'
CHUCK WAGON DINER
"Most Modern Diner
In the West"

OUR FAMOUS COWBOY PLATE SPECIAL

ONE-HALF POUND ZESTIFUL SEASONED HAMBURGER STEAK
Potatoes Crisp Garden Salad
Roll and Butter
99c

COLORADO STEAK SPECIAL

TENDER CUBED STEAK
French Fried Potatoes
Salad, Roll and Butter
89c

Children's Orders

Choice of BREADED PORK CUTLET
CHICKEN DRUMSTICK
STEAKBURG PATTY
FRENCH FRIED SHRIMP
75c

Served on Cowboy Plate with Choice of French Fried Potatoes or Mashed Potatoes Any Salad and a Glass of Milk

HOT DE LUXE SANDWICHES

- De Luxe Hamburger 59
- De Luxe Cheeseburger 69
- De Luxe Barbecued Beef 59
- De Luxe Fried Ham 63
- De Luxe Breaded Pork Cutlet 95

Served in a Basket on a Toasted Bun with French Fried Potatoes, Cole Slaw and Pickle Chip

FROM OUR FRYER

- Fried Jumbo Shrimp 1.25
- Boneless Perch or Halibut Steak 69
- Breaded Pork Cutlet 89
- Breaded Veal Cutlet 89
- Chicken Fried Steak 89

Served with Potatoes, Crisp Salad, Hot Rolls and Butter

RATH'S BLACK HAWK (Brand) Sugar-cured

SMOKED LOIN CHOPS

TWO GRILLED PORK CHOPS



Choice of Potatoes
Apple Sauce and Hot Roll
\$1.35

SANDWICHES

- Tender Black Hawk Ham 40
- Grilled American Cheese 30
- Ham and Cheese Combination 50
- Bacon, Lettuce and Tomato Club 55
- Ham and Cheese Club (Tripple Decker) 40
- Bacon, Lettuce and Tomato 45
- Hamburger 35
- Cheeseburger 45
- Barbecued Beef 39
- Breaded Pork Tenderloin 45
- Sliced Roast Turkey 50

HOT CHUCK WAGON SPECIALS

- ROAST TURKEY DINNER with Dressing, Cranberry Sauce, Potatoes, Giblet Gravy, Hot Vegetable, Roll and Butter 1.10
- HOT TURKEY SANDWICH, Open Style, Potatoes, Gravy, Cranberry Sauce 85
- HOT ROAST BEEF SANDWICH, Open Style, Potatoes and Gravy 65
- HOT HAM SANDWICH, Open Style, Potatoes and Gravy 65

SIDE DISHES

- French Fried Potatoes, large order 25
- Crisp Garden Salad 29
- Kidney Bean Salad 20
- Cottage Cheese 20
- Macaroni Spring Salad 20
- Cole Slaw 15

DESSERTS

- Pie, per cut 20
- Pie a la Mode 30
- Chocolate Sundae 30
- Strawberry or Pineapple Sundae 35
- Ice Cream, dish 20
- Chocolate Soda 30

Malted Waffles

- ONE WAFFLE with Pure Creamy Butter and Plenty of Good Syrup 40
- STACK OF TWO WAFFLES 65
- ONE WAFFLE with Canadian Bacon 80
- with Three Slices of Crisp Bacon 70
- with Link Sausage 70
- with One Fried Egg 55



FOR OTHER BREAKFAST ITEMS CONSULT YOUR WAITRESS

BEVERAGES

- Iced Tea, All You Can Drink 10
- Coffee 10
- Milk 10
- Hot Tea 10
- Instant Soda 10
- Coke, Root Beer or Orange 10

CHUCK WAGON BARBECUED BEEF

On Toasted Bun
Pickle Slice

30c

CHUCK WAGON HAMBURGER

on
Hot Toasted Bun
Pickle and Onion

25c

MASON-DIXON TWINBURGER

Two Hamburger Patties (Open Face)
North Side Cheese
South Side Tomato

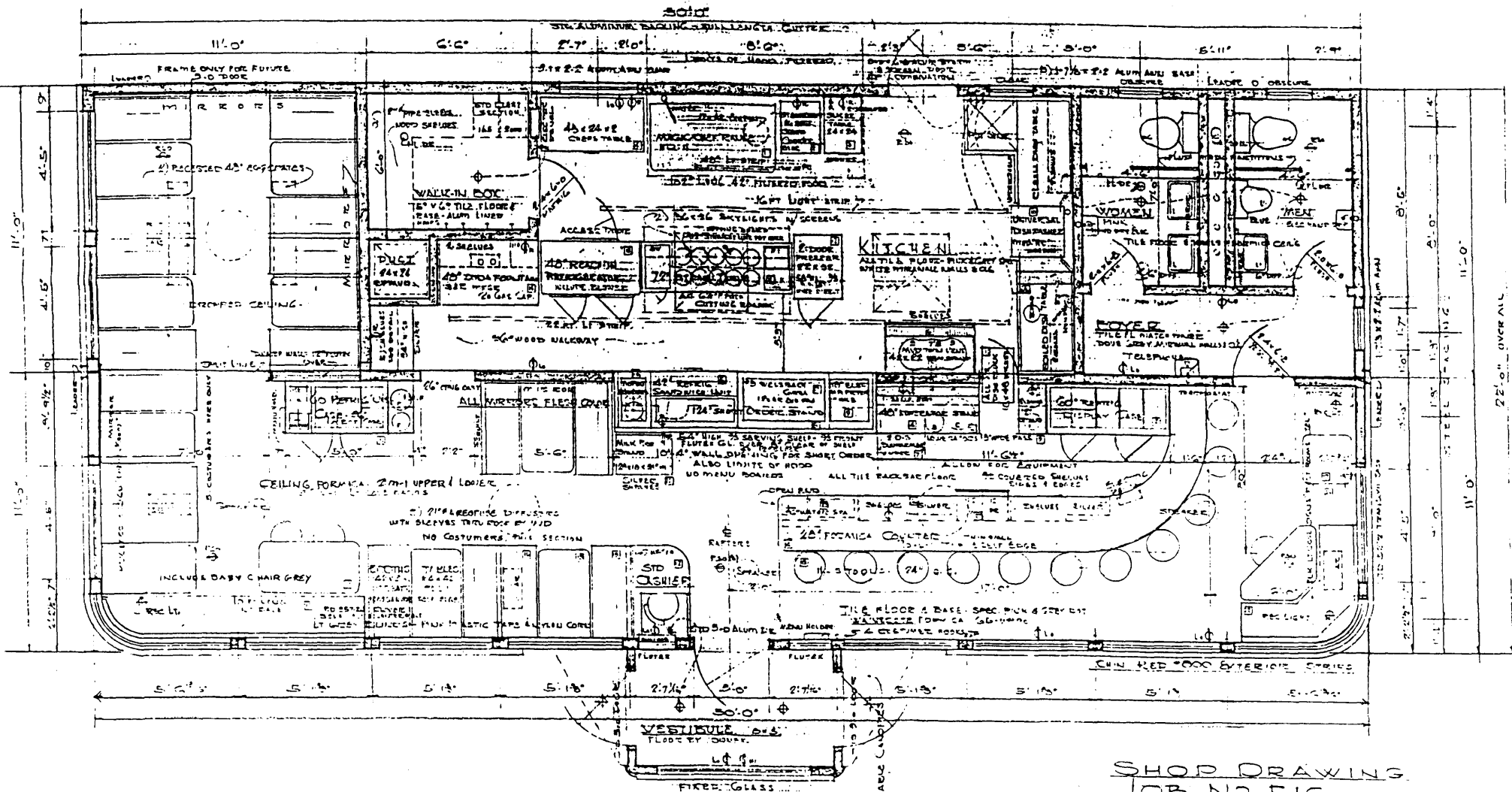
50c

Thick-Tasty MILK SHAKE

30c
MALTED MILK

35c

Davies' Chuck Wagon Diner

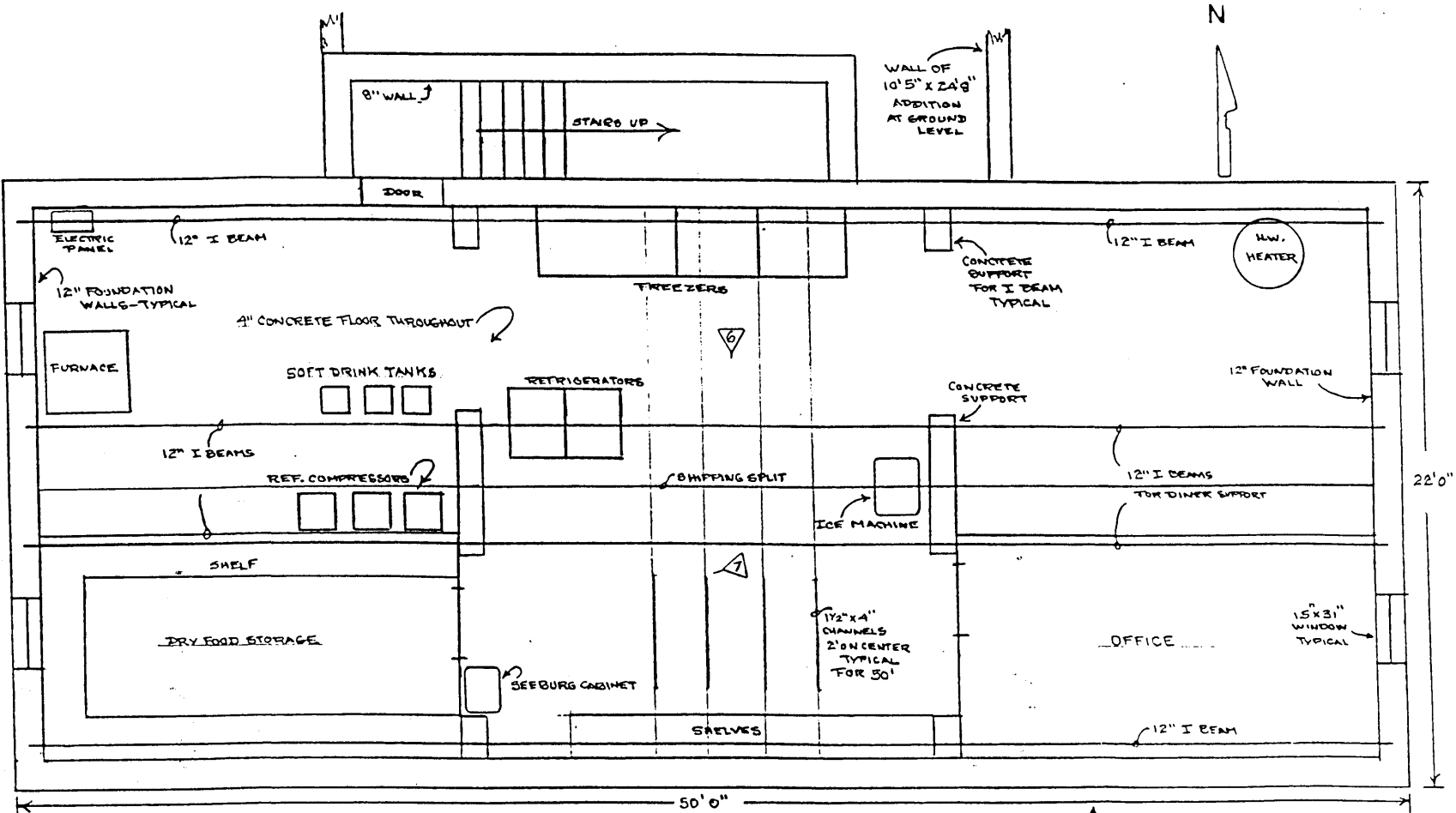


FLOOR PLAN
 Scale 1/8" = 1'-0"
 SEATING CAPACITY (58)

SHOP DRAWING
 JOB NO 516
 FOR
 WILLIAM LYMAN DAVIES
 112 COR. W. COLFAX AVE. (RT. 40) & HOYT STREET
 DENVER, COLORADO
 MOUNTAINVIEW DINERS, SINGAC, N. J.



Davies' Chuck Wagon Diner



BASEMENT AND FOUNDATION WALLS - NTS.
 DAVIES' CHUCK WAGON DINER - 9495 WEST COLFAX AVENUE
 LAKEWOOD, COLORADO - JEFFERSON COUNTY - 1/30/97 BY F.H.

△ INDICATES PHOTO VANTAGE POINT