



HOME ELECTRONICS
SALES MAGNAVOX SERVICE

REHA
SALES SERVICE

REPAIR

REPAIR

REPAIR

REPAIR

REPAIR

Photo # 1 of 30

1. Central Park - N. Main St. Historic District
2. Charles City, Floyd Co., Iowa
3. Ronald E. Schmitt, August 1975, neg, filed @ Dept. of Community Development, City Hall, Charles City, Iowa
4. View looking northwest of 200 block, west side of N. Main St. between Clark & Kelly St. Buildings are, south to north (left to right): 6. J.W. Smith Block, 7. Lindon-Commercial Bank-Dyke, 8. Waller, 9. May, 10. John Kuck Harness Shop, 11. Carl MERKEL Hardware, 12. J.W. Lehmkuhl, 13. First National Bank

AUG 10 1976

MAY 12 1976



Photo #2 of 30

1. Central Park - N. Main St. Historic District
2. Charles City, Floyd Co., Iowa
3. Gary Patterson, Dec. 1975 - neg. @ Dept. Community Development;
City Hall, Charles City, Iowa
4. View looking northwest from Riverside Drive of the west side, 100 block, of N. Main St. with 200 block west frontage at extreme right. 100 block buildings are: 1. Farmers' Trust & Savings Bank, 2. Legel Building, 3. Legel Drug Store (Museum), 4. Herrington, 5. Gilbert's Stone Block/Union House

AUG 10 1976

MAY 12 1976



MAIN ST LOOKING NO
CHARLES CITY IA

Photo # 3 of 30

1. Central Park - N. Main St. Historic District
2. Charles City, Floyd Co., Iowa
3. Ronald E. Schmitt, August 1975 copy of post card, collection of LEE Albaugh - original photographer unknown - circa 1900 original.
neg. @ Dept. Community Development, City Hall, Charles City, Iowa.
4. View looking north up 200 block of N. Main St. from Clark St.

Buildings on right (east) are all demolished or severely altered.

Buildings on left (west) are in Historic District; at extreme left is

6. J.W. Smith Block, then 7. Lindon-Commercial Bank-Dyke building with balcony.

Central Park, with trees, is in background.

AUG 10 1976 MAY 12 1976



Main Street, Looking North, Charles City, Iowa.

Photo #4 of 30

1. Central Park - N. Main St. Historic District

2. Charles City, Floyd Co., Iowa

3. Ronald E. Schmitt, August 1975 copy of post card, collection of

LEE Albaugh - original photographer unknown - original date: circa 1905.
neg. @ Dept. Community Development - City Hall, Charles City, Iowa

4. View looking north up 200 block of N. Main Street. Buildings on right

(east) are all demolished or severely altered. Buildings on left (west) are in

Historic District: at extreme left is 7. Lindon-Commercial Bank-Dyke Building with balcony. Central Park, with trees, is at left center.

7511

AUG 10 1976

MAY 2 1976



Photo #5 of 20

1. Central Park - N. Main St. Historic District

2. Charles City, Floyd Co., Iowa

3. Ronald E. Schmitt, August 1975 copy of post card, collection of

LEE Albaugh - original photographer unknown - original date: circa 1912.

Neg. @ Dept. of Community Development, City Hall, Charles City, Iowa

4. View looking south down N. Main St. towards river from Central Park at

Kelly Street. Buildings on left (east) are all demolished or severely

altered. Buildings on right (west) are in Historic District: at extreme right

foreground is 13. First National Bank, then 12. J.W. Lehmkuhl, 11. Carl Merckel Hardware,

10. John Kuck Harness Shop, vacant lots (9. May Building not built), 8. Waller, 7. Lindon-Commercial Bank-Dyke,

6. J.W. Smith Block, then 100 block of N. Main beyond Clark St.

MAY 12 1976



Photo # 6 of 30

1. Central Park - N. Main St. Historic District
2. Charles City, Floyd Co., Iowa
3. Ronald E. Schmitt, Aug. 1975, Neg. @ Dept. Community Development, City Hall, Charles City, Iowa
4. (1) Farmers Trust & Savings Bank (101-103 N. Main St.), looking west-northwest, corner of N. Main St. & Riverside Drive

AUG 10 1976

MAY 12 1976



Photo # 7 of 30

1. Central Park - N. Main St. Historic District
2. Charles City, Floyd Co., Iowa
3. Ronald E. Schmitt, Aug. 1975 - neg@Dept. Community Development,
City Hall, Charles City, Iowa
4. (2) Lege Building (105 N. Main St.), looking west showing front
(east) facade

AUG 10 1976 MAY 12 1976



LOYD COUNTY
MUSEUM

FLOYD COUNT
MUSEUM

FAIRSTAFF

Photo #8 of 30

1. Central Park - N. Main St. Historic District

2. Charles City, Floyd Co, Iowa

3. Ronald E. Schmitt, Aug. 1975 - neg. @ Dept. Community Development,
City Hall, Charles City, Iowa

4. (3) Legel Drug Store (107 N. Main St.), looking west showing front (east)
facade - Now Floyd County Historical Society Museum.

AUG 10 1976

MAY 12 1976



COWELL'S

FLOYD COUNTY
MUSEUM

FALSTAFF

FALSTAFF

Photo #9 of 30

1. Central Park - N. Main St. Historic District

2. Charles City, Floyd Co., Iowa

3. Ronald E. Schmitt, Aug. 1975 - neg. @ Dept. Community Development,
City Hall, Charles City, Iowa

7514. (4) Herrington Building (109 N. Main St.), looking west-southwest showing
front (east) facade and north "party wall"

AUG 10 1976

MAY 12 1976



GILBERT
HOTEL

Ray's

Photo # 10 of 30

1. Central Park-N. Main St. Historic District

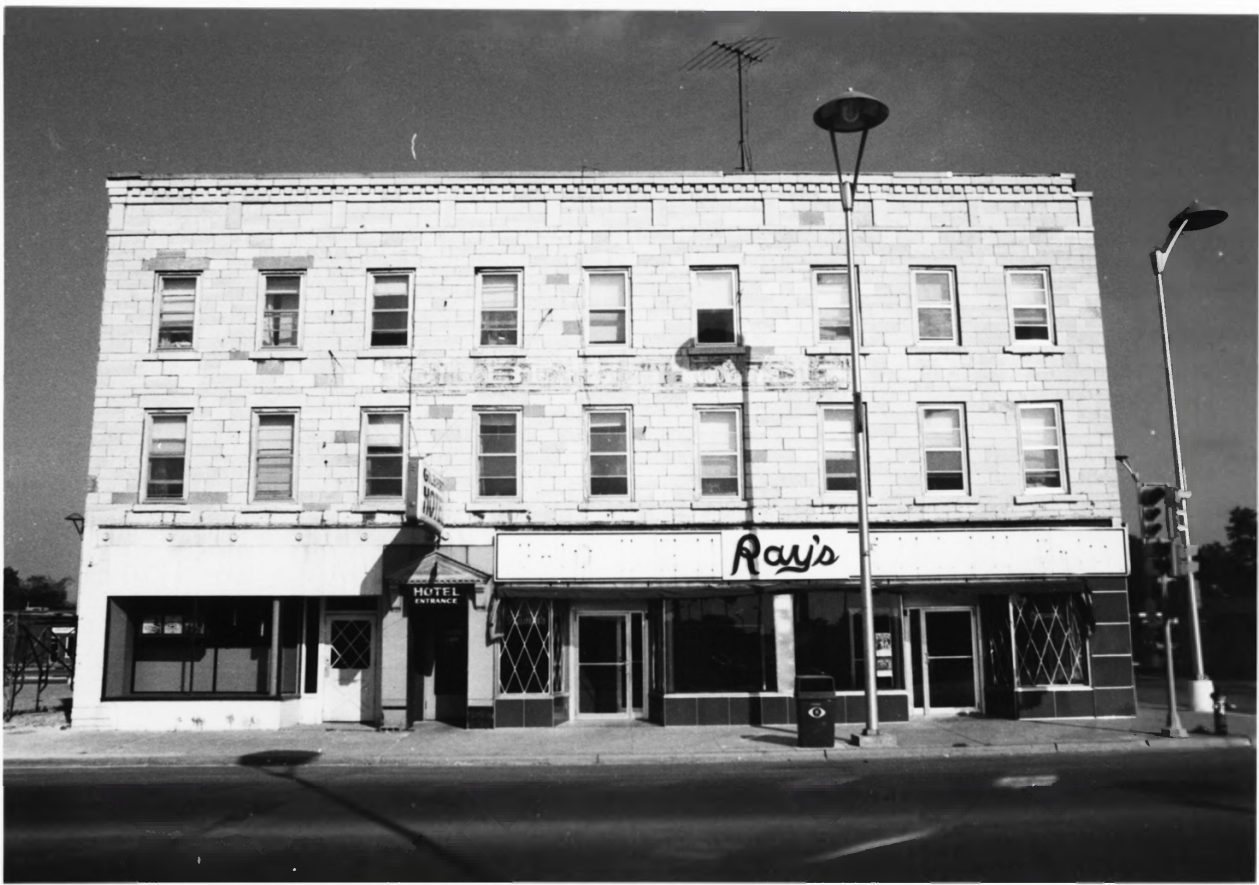
2. Charles City, Floyd Co., Iowa

3. Ronald E. Schmitt, Aug. 1975 - neg. @ Dept. Community Development,
City Hall, Charles City, Iowa

4. (5) Gilbert's Stone Block/Union House (119-123 N. Main St.), looking
southwest showing front (east) facade on Main St. & north side
facing Clark St. 1877 addition @ rear facing Clark St,
vacant parcel @ left.

AUG 10 1976

MAY 12 1976



Ray's

HOTEL
ENTRANCE

Photo #11 430

1. Central Park - N. Main St. Historic District
2. Charles City, Floyd County, Iowa
3. Ronald E. Schmitt, August 1975, neg. filed @ Department of
Community Development, City Hall, Charles City, Iowa
4. (5) Gilbert's Stone Block/Union House (119-123 N. Main St.) -
Looking west showing front (Main St.) or east facade.

AUG 10 1976

MAY 12 1976



Photo #12 of 30

1. Central Park-N. Main St. Historic District.

2. Charles City, Floyd Co., Iowa

3. Ronald E. Schmitt, Aug, 1975 - neg. @ Dept. Community Development,
City Hall, Charles City, Iowa

4. (5) Gilbert's Stone Block/Union House (119-123 N. Main St.), looking south
showing north facade facing Clark St. of original 1863 portion

AUG 10 1976 MAY 12 1976



Photo #13 of 30

1. Central Park - N. Main St. Historic District

2. Charles City, Floyd County, Iowa.

3. Ronald E. Schmitt, August 1975, neg. filed @ Department of
Community Development, City Hall, Charles City, Iowa.

4. (5) Gilbert's Stone Block/Union House (119-123 N. Main St.)
Looking south showing 1877 addition of north facade (Clark St.)

AUG 10 1976 MAY 12 1976



Photo #14 of 30

1. Central Park-N. Main St. Historic District.

2. Charles City, Floyd County, Iowa

3. Ronald E. Schmitt, August 1975, neg. filed @ Department of

Community Development, City Hall, Charles City, Iowa

4. (5) Gilbert's Stone Block/Union House (119-123 N. Main St.) -
Looking southeast showing 1877 addition & 1974 entry addition.

AUG 10 1976

MAY 12 1976



Photo # 15 of 30

1. Central Park-N. Main St. Historic District
2. Charles City, Floyd Co., Iowa
3. Ronald E. Schmitt, Aug. 1975. neg. @ Dept. Community Development, City Hall, Charles City, Iowa
4. (6) J.W. Smith Block (201-203 N. Main St.), looking northwest showing front (east) facade facing N. Main St. & side (south) facade facing Clark St.

AUG 10 1975 MAY 12 1976

HOME ELECTRONICS
SALES MAGNAVOX SERVICE

KCHA 1580
STEREO 105



Photo #16 a/30

1. Central Park - N. Main St. Historic District
2. Charles City, Floyd Co., Iowa
3. Ronald E. Schmitt, Aug. 1975, neg. @ Dept. Community Development,
City Hall, Charles City, Iowa
4. (7) Lindon - Commercial Bank - Dyke Building (205-209 N. Main St.),
looking west showing front (east) facade.

AUG 10 1976

MAY 19 1976

MAY 2 1976

HARDWARE

WINTER Specials



Photo # 17 of 30

1. Central Park - N. Main St. Historic District
2. Charles City, Floyd Co., Iowa
3. Ronald E. Schmitt, Aug. 1975, neg. filed @ Dept. Community Development,
City Hall, Charles City, Iowa
4. (8) Waller Building (211 N. Main St.), looking west showing front (east)
facade.

AUG 10 1976 MAY 12 1976



Photo # 18 of 30

1. Central Park - N. Main St. Historic District
2. Charles City, Floyd Co., Iowa
3. Ronald E. Schmitt, Aug. 1975, neg. @ Dept. Community Development,
City Hall, Charles City, Iowa
4. (9) May Building (213 N. Main St.), looking west showing front
(east) facade.

.....
AUG 10 1976 MAY : 2 1976



Photo # 19 + 20

1. Central Park - N. Main St. Historic District
2. Charles City, Floyd Co., Iowa
3. Ronald E. Schmitt, Aug. 1975, neg. @ Dept. Community Development, City Hall, Charles City, Iowa
4. vacant parcel (215 N. Main St.), looking west from Main St.
Note "rear" city parking lot. Parcel proposed to become pedestrianway between parking lot and N. Main St.

MAY 12 1976

AUG 10 1976



Gifts

BG's Shoppe

Hallmark
Cards

FLOYD COUNTY
CONSERVATION
BOARD

Photo # 20 - 130

1. Central Park - N. Main St. Historic District
2. Charles City, Floyd Co., Iowa
3. Ronald E. Schmitt, Aug. 1975, neg. @ Dept. Community Development,
City Hall, Charles City, Iowa.
4. (10) John Kuck Harness Shop (217 N. Main St.), looking west
showing front (east) facade

MAY 12 1976

AUG 10 1976

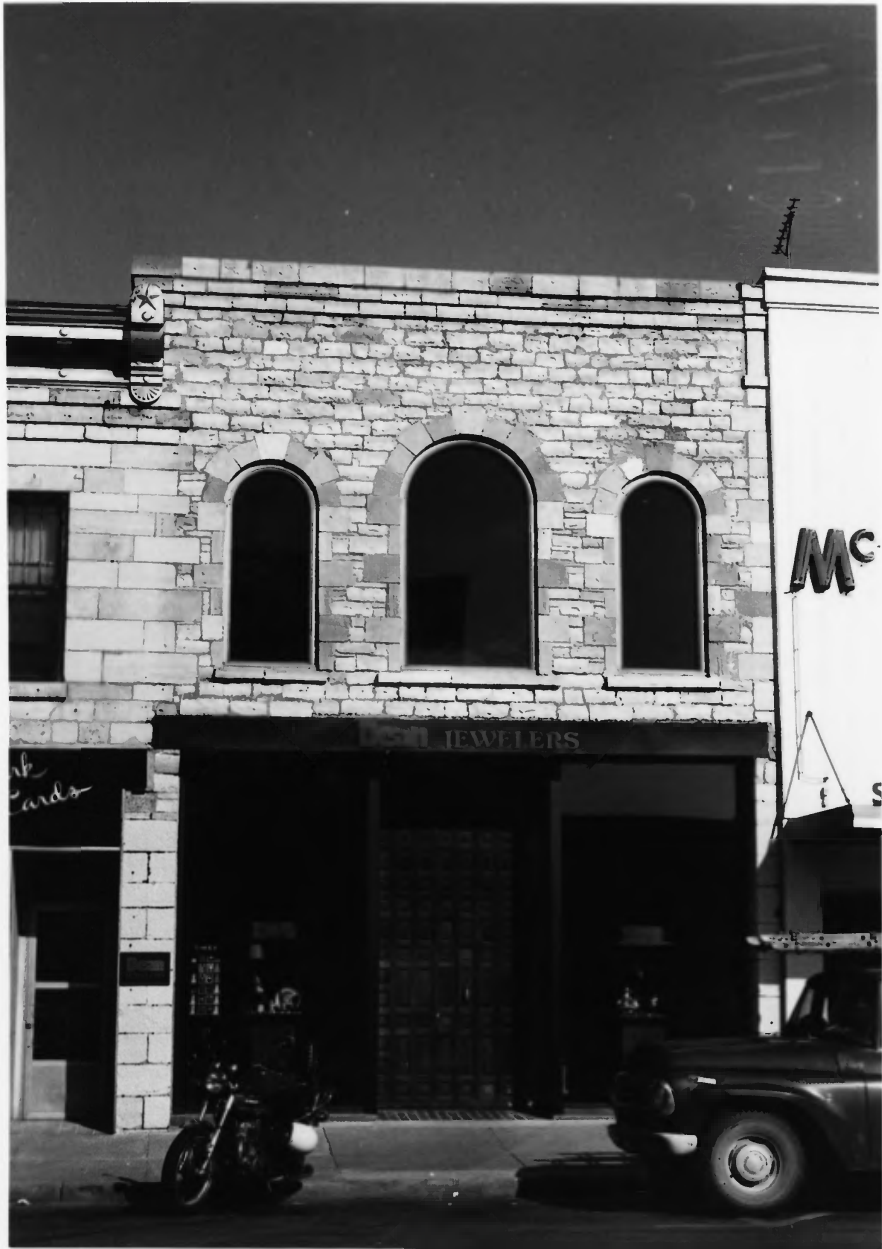


Photo # 21 of 30

1. Central Park-N. Main St. Historic District
2. Charles City, Floyd Co., Iowa
3. Ronald E. Schmitt, Aug. 1975, neg. @ Dept. Community Development,
City Hall, Charles City, Iowa
4. (ii) Carl Merckel Hardware (219 N. Main St.), looking west
showing front (east) facade.

AUG 10 1976

MAY 12 1976

McDERMOTT TV
SERVICE

STEREO

RCA

COLOR TV

NOW!
BIGGEST
RCA TV & VCR
CLEARANCE
IN HISTORY



Photo # 22 of 30

1. Central Park - N. Main St. Historic District
2. Charles City, Floyd Co., Iowa
3. Ronald E. Schmitt, Aug. 1975, neg. @ Dept. Community Development,
City Hall, Charles City, Iowa
4. (12) J.W. Lehmkuhl Building (221 N. Main St.), looking west
showing front (east) facade with wood siding "billboard"
applied over original limestone wall.

AUG 10 1976

MAY 12 1976



UPTOWN CAFE

NO
PARKING
EXCEPT
TO LOAD
OR UNLOAD

GUINNESS
ON TAP

Photo # 23 of 30

1. Central Park - N. Main St. Historic District
2. Charles City, Floyd Co., Iowa
3. Ronald E. Schmitt, Aug. 1975, neg. @ Dept. Community Development,
City Hall, Charles City, Iowa
4. (13) First National Bank (223 N. Main St.), looking west-southwest
showing front (east) facade facing N. Main St. & portion of side
(north) facade facing Kelly St. & Central Park on the right.

AUG 10 1976

MAY 12 1976



COCKTAILS

Photo # 24 of 30

1. Central Park - N. Main St. Historic District

2. Charles City, Floyd Co., Iowa

3. Ronald E. Schmitt, Aug. 1975, neg. @ Dept. Community Development,
City Hall, Charles City, Iowa

4. (13) First National Bank (223 N. Main St.), looking south-southwest
showing side (north) facade facing Kelly St. & Central Park & portion of
front (east) facade facing N. Main St. on the left.

MAY 12 1976

AUG 10 1976



PUBLIC LIBRARY

Photo # 25 h³⁰

1. Central Park - N. Main St. Historic District
2. Charles City, Floyd Co., Iowa
3. Ronald E. Schmitt, Aug. 1975, neg. @ Dept. Community Development,
City Hall, Charles City, Iowa
4. (14) Public Library (301 N. Jackson), looking west-northwest

AUG 10 1976

MAY 12 1976



Welton's
INC.
REALTORS

Photo # 26 of 30

1. Central Park - N. Main St. Historic District

2. Charles City, Floyd Co., Iowa

3. Ronald E. Schmitt, Aug. 1975, neg. @ Dept. Community Development,
City Hall, Charles City, Iowa

4. (15) H.J. Fitzgerald home (305 N. Jackson), looking west-northwest

AUG 10 1976

MAY 12 1976



Photo # 27

1. Central Park - N. Main St. Historic District
2. Charles City, Floyd Co., Iowa
3. Ronald E. Schmitt, Aug. 1975, neg. @ Dept. Community Development,
City Hall, Charles City, Iowa
4. (16) Milo Gilbert house (307 N. Jackson), looking west-northwest

AUG 10 1976

MAY 12 1976



Photo #28

1. Central Park - N. Main St. Historic District

2. Charles City, Floyd Co., Iowa

3. Ronald E. Schmitt, Aug. 1975, neg. @ Dept. Community Development,
City Hall, Charles City, Iowa

4. (16) Milo Gilbert house (307 N. Jackson) looking west-southwest

AUG 10 1976

MAY 12 1976



Photo # 29

1. Central Park - N. Main St. Historic District
2. Charles City, Floyd Co., Iowa
3. Gary Patterson, Dec., 1975, neg. @ Dept. Community Development,
City Hall, Charles City, Iowa
4. (17) Central Park (bounded by Blunt, N. Main, Kelly & N. Jackson Streets),
looking northwest from N. Main & Kelly St. intersection towards
N. Jackson & Blunt St. intersection. Note (15) H.W. Fitzgerald and (16) Milo
Gilbert houses @ far left background.



Photo #30

1. Central Park - N. Main St. Historic District
2. Charles City, Floyd Co., Iowa
3. Ronald E. Schmitt, Aug. 1975 - neg. @ Dept. of Community Development,
City Hall, Charles City, Iowa
4. (17) Central Park (bounded by Blunt, N. Main, Kelly & N. Jackson Streets) -
looking north-northwest from Kelly St. Note (16) Milo Gilbert house
@ far left background (behind tree) on N. Jackson St.

AUG 10 1976

MAY 12 1976