



.Bradford Hotel, Lisbon, ND

Photo 1 of 15

-South front exterior elevation

-Looking north



Bradford Hotel, Lisbon, ND

-Concrete area wells surrounded with wrought iron spindle rails

-Looking west from southwest corner of building

Photo 2 of 15



Bradford Hotel, Lisbon, ND

-Front entrance

-Looking towards north

Photo 3 of 15



Bradford Hotel, Lisbon, ND

-Typical entrance to an apartment

-Main floor looking towards east

-Note original door and transom

Photo 4 of 15

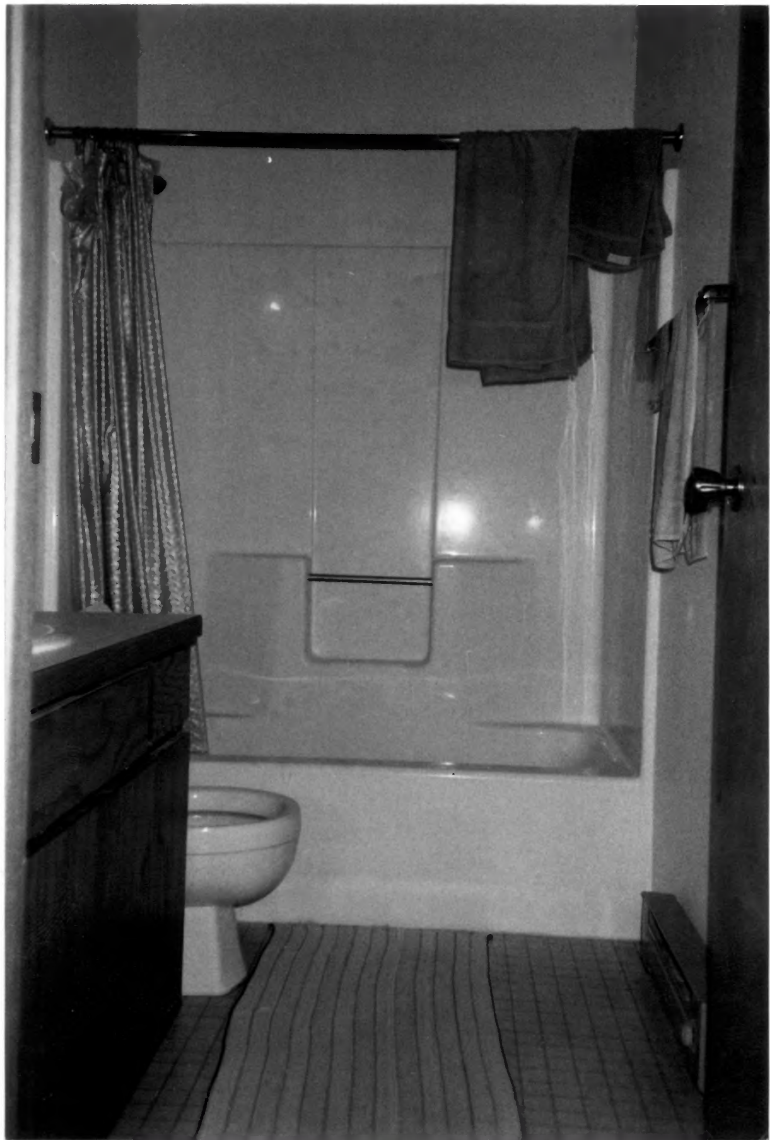


Bradford Hotel, Lisbon, ND

-Typical living room

-Looking towards north

Photo 5 of 15



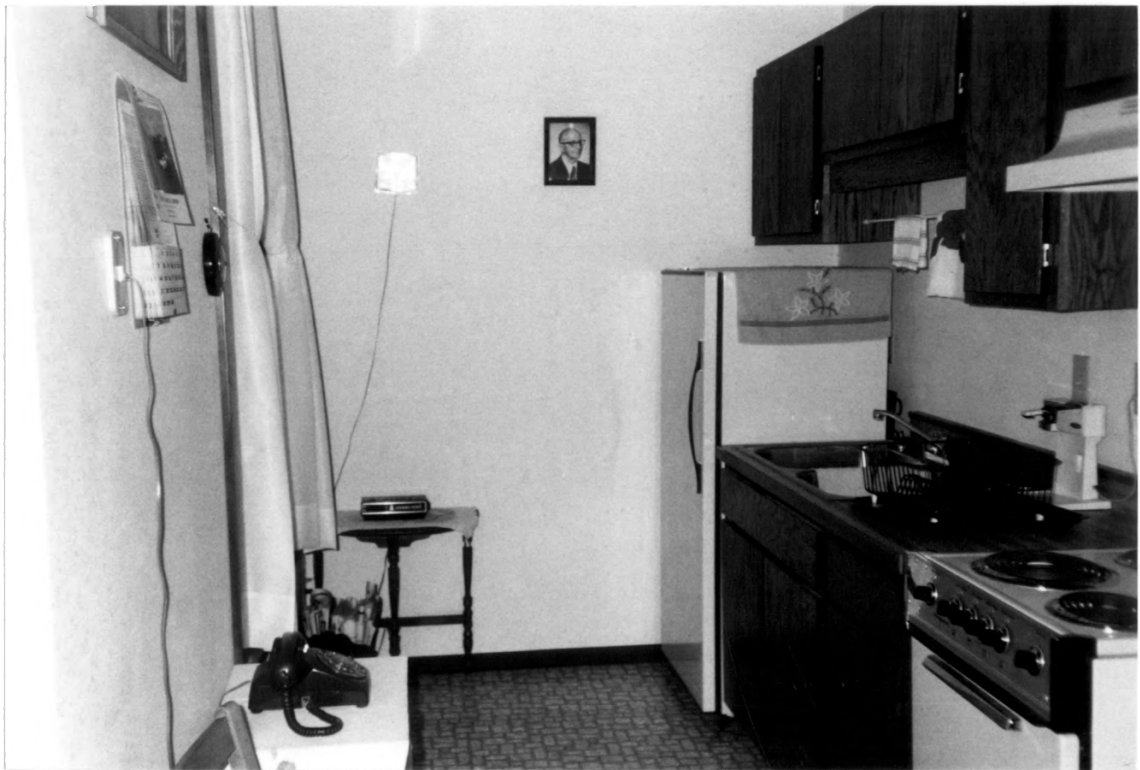
Bradford Hotel, Lisbon, ND

-Typical bathroom

-Lav., water closet, and storage

-Looking towards west

Photo 6 of 15



Bradford Hotel, Lisbon, ND

-Typical kitchen

-Looking towards west

Photo 7 of 15



Bradford Hotel, Lisbon, ND

-Typical bedroom

-Looking towards west

Photo 8 of 15



Bradford Hotel, Lisbon, ND

-Balustrade staircase

-Main level entry looking up

-Looking towards north and up

Photo 9 of 15



Bradford Hotel, Lisbon, ND

-Staircase

-Looking towards north and down to landing
from second floor

Photo 10 of 15



Bradford Hotel, Lisbon, ND

-Second floor corridor

-Looking towards the east

Photo 11 of 15



Bradford Hotel, Lisbon, ND

-Newly placed fire escape

-Looking west towards north wing

Photo 12 of 15



Bradford Hotel, Lisbon, ND

- Uneven spaced windows on front elevation
- Small corbel surrounding the base of the parapet
- Looking north at east front elevation of building

Photo 13 of 15



Bradford Hotel, Lisbon, ND

-Typical preserved window in an apartment

-Looking towards the S. W.

Photo 14 of 15



Bradford Hotel, Lisbon, ND

-Viewing the Lisbon Hotel and adjacent
property from mainstreet

-Looking W. N. W. from S. E. intersection
of mainstreet and Fourth Ave. West

Photo 15 of 15