

United States Department of the Interior  
National Park Service

National Register of Historic Places  
Registration Form

This form is for use in nominating or requesting determinations for individual properties and districts. See instructions in *How to Complete the National Register of Historic Places Registration Form* (National Register Bulletin 16A). Complete each item by marking "x" in the appropriate box or by entering the information requested. If an item does not apply to the property being documented, enter "N/A" for "not applicable." For functions, architectural classification, materials, and areas of significance, enter only categories and subcategories from the instructions. Place additional entries and narrative items on continuation sheets (NPS Form 10-900a). Use a typewriter, word processor, or computer, to complete all items.

1. Name of Property

historic name Mooringsport School

other names/site number Mooringsport Elementary School

2. Location

street & number 602 Latimer Street N/A not for publication

city or town Mooringsport N/A vicinity

state Louisiana code LA county Caddo code 017 zip code 71060

3. State/Federal Agency Certification

As the designated authority under the National Historic Preservation Act, as amended, I hereby certify that this  nomination  request for determination of eligibility meets the documentation standards for registering properties in the National Register of Historic Places and meets the procedural and professional requirements set forth in 36 CFR Part 60. In my opinion, the property  meets  does not meet the National Register criteria. I recommend that this property be considered significant  nationally  statewide  locally. ( See continuation sheet for additional comments.)

Jonathan Fricker 4/24/96  
Signature of certifying official/Title Date

Deputy SHPO, Dept of Culture, Recreation and Tourism  
State of Federal agency and bureau

In my opinion, the property  meets  does not meet the National Register criteria. ( See continuation sheet for additional comments.)

\_\_\_\_\_  
Signature of commenting official/Title Date

\_\_\_\_\_  
State or Federal agency and bureau

4. National Park Service Certification

I hereby certify that the property is:

- entered in the National Register.  
 See continuation sheet.
- determined eligible for the National Register  
 See continuation sheet.
- determined not eligible for the National Register.
- removed from the National Register.
- other, (explain:)

Signature of the Keeper  
Carol D. Shree

Date of Action  
6-13-96

Mooringsport School

Caddo Parish, LA

Name of Property

County and State

5. Classification

Ownership of Property (Check as many boxes as apply)

- private, public-local, public-State, public-Federal

Category of Property (Check only one box)

- building(s), district, site, structure, object

Number of Resources within Property (Do not include previously listed resources in the count.)

Table with 2 columns: Contributing, Noncontributing. Rows for buildings, sites, structures, objects, and Total.

Name of related multiple property listing (Enter "N/A" if property is not part of a multiple property listing.)

N/A

Number of contributing resources previously listed in the National Register

0

6. Function or Use

Historic Functions (Enter categories from instructions)

SCHOOL/education

Current Functions (Enter categories from instructions)

SCHOOL/education

7. Description

Architectural Classification (Enter categories from instructions)

no style

Materials (Enter categories from instructions)

foundation concrete

walls brick

roof asphalt

other

Narrative Description

(Describe the historic and current condition of the property on one or more continuation sheets.)

**United States Department of the Interior  
National Park Service**

**National Register of Historic Places  
Continuation Sheet**

Mooringsport School, Caddo Parish, LA

Section number 7 Page 1

---

The Mooringsport School is a two story brick educational facility built in stages between 1911 and 1927. The simple, unstyled building stands on a knoll in a modest early twentieth century neighborhood in the small community of Mooringsport, located on the south shore of Caddo Lake. Despite alterations such as replaced windows and rear additions, the school retains enough of its historic appearance to convey its significance as a milestone in local education.

The forward projecting section of the present building is the original 1911 construction. In 1921 a large matching T-shaped addition was made, and in 1927 another addition was made to the rear (see drawing). All were designed by Shreveport architect Edward F. Neild. Although the 1927 addition is of virtually identical brick, the detailing is not the same as the 1911 and 1921 portions. Also, the 1911 and 1921 sections have hip roofs, while the 1927 addition has a flat roof.

The school is rather severe, featuring very little in the way of even modest decorative details. The 1911 and 1921 sections have tall window openings with concrete lintels, grouped mainly in fours. Originally they had nine over nine panes capped by movable transoms, per an old photo. The present horizontal pane windows are, of course, modern. The previously mentioned photo shows a completely different front opening from the present one, which blueprints show was added in 1927. Originally the entrance was flush with the main wall surface and featured a shallow arch accented with a keystone and tiny panes of glass in the transom. The composition was capped with an awning resting on brackets. The 1927 entrance projects forward by a few inches and has a recessed cast concrete opening accented with panels.

Although it has very similar brickwork, the boxy relatively small 1927 section reads as an addition, due to its flat roof and different window pattern. There is a band of windows on each floor of the side elevations and a single tall window.

The Mooringsport School is also plain on the interior and is finished in the same manner throughout the historic sections. The only attempt at decoration is a wainscot effect in the hallways and classrooms created by rough plaster below a smooth concrete band and in the auditorium on the second floor. The wall where the auditorium's stage is located curves out into the hallway (see photo). The simple proscenium is paneled.

**United States Department of the Interior  
National Park Service**

**National Register of Historic Places  
Continuation Sheet**

Mooringsport School, Caddo Parish, LA

Section number 7 Page 2

---

In addition to the window replacement explained above, the school has experienced the following non-historic alterations:

(1) Two one story additions to the rear were made, one in 1951 and the other in the 1980s.

(2) Tall chimneys on the 1911 and 1921 sections have been removed, per the previously mentioned old photo.

(3) Interior modifications have been made over the years, including lowered acoustical tile ceilings in the hallways, new classroom doors, the insertion of fire walls and doors in the first floor rear hallway, and a couple of changes to the floorplan. The latter includes the subdivision of the auditorium, with roughly one half now being used for a library, and the subdivision of one room downstairs into two offices.

(4) An elevator shaft has been added on the south side of the 1921 section.

Assessment of Integrity:

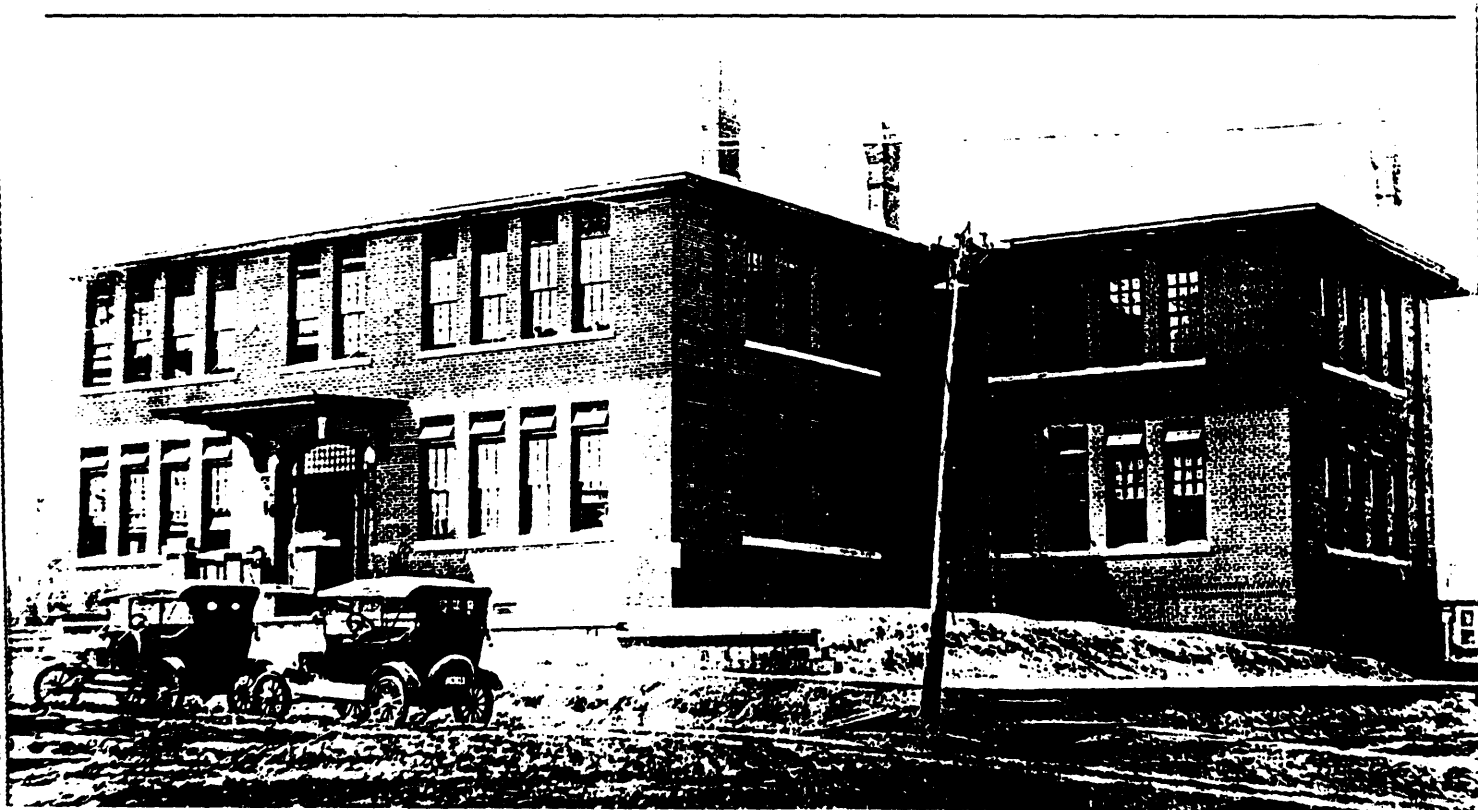
The most important of the alterations has been the window replacement, which is typical for old schools in the state. And while it is obviously noticeable, the school still easily retains sufficient integrity to merit Register listing under historical significance. The litmus test is whether or not someone from the historic period would recognize the building today, which they easily would.

**United States Department of the Interior  
National Park Service**

# **National Register of Historic Places Continuation Sheet**

Mooringsport School, Caddo Parish, LA

Section number 7 Page 3



**8. Statement of Significance**

**Applicable National Register Criteria**

(Mark "x" in one or more boxes for the criteria qualifying the property for National Register listing.)

- A** Property is associated with events that have made a significant contribution to the broad patterns of our history.
- B** Property is associated with the lives of persons significant in our past.
- C** Property embodies the distinctive characteristics of a type, period, or method of construction or represents the work of a master, or possesses high artistic values, or represents a significant and distinguishable entity whose components lack individual distinction.
- D** Property has yielded, or is likely to yield, information important in prehistory or history.

**Criteria Considerations** N/A  
(Mark "x" in all the boxes that apply.)

Property is:

- A** owned by a religious institution or used for religious purposes.
- B** removed from its original location.
- C** a birthplace or grave.
- D** a cemetery.
- E** a reconstructed building, object, or structure.
- F** a commemorative property.
- G** less than 50 years of age or achieved significance within the past 50 years.

**Areas of Significance**

(Enter categories from instructions)

education

**Period of Significance**

1911, 1921, 1927

**Significant Dates**

1911, 1921, 1927

**Significant Person**

(Complete if Criterion B is marked above)

N/A

**Cultural Affiliation**

N/A

**Architect/Builder**

Edward F. Neild

**Narrative Statement of Significance**

(Explain the significance of the property on one or more continuation sheets.)

**9. Major Bibliographical References**

**Bibliography**

(Cite the books, articles, and other sources used in preparing this form on one or more continuation sheets.)

**Previous documentation on file (NPS):** N/A

- preliminary determination of individual listing (36 CFR 67) has been requested
- previously listed in the National Register
- previously determined eligible by the National Register
- designated a National Historic Landmark
- recorded by Historic American Buildings Survey # \_\_\_\_\_
- recorded by Historic American Engineering Record # \_\_\_\_\_

**Primary location of additional data:**

- State Historic Preservation Office
- Other State agency
- Federal agency
- Local government
- University
- Other

Name of repository:

Caddo Parish School Board



**United States Department of the Interior  
National Park Service**

**National Register of Historic Places  
Continuation Sheet**

Mooringsport School, Caddo Parish, LA  
Section number 8 Page 1

---

The Mooringsport School is locally significant in the area of education because it represents a “coming of age” for education in the town. The construction of a “modern brick school” in 1911 was a milestone in the history of education in Mooringsport, from both a real and symbolic point of view. The school’s expansions in the 1920s represent further improvements in the quality of education being offered. During the historic period grades 1 through 11 were taught in the building.

The Mooringsport School first and foremost must be viewed within its proper historical context -- the discovery and development of the Caddo oil field in the early years of this century. Almost overnight the tiny hamlet of Mooringsport was transformed into a rough-and-tumble bustling oil boom town. The first successful oil well in the Caddo field was drilled in 1906, and between 1908 and 1918 production increased eleven-fold to 11,144,000 barrels. Although production began a slow decline after this peak, the local economy continued to rely heavily on oil into the post-World War II era.

Mooringsport was located in the thick of the Caddo field, which included wells on and around Caddo Lake. Old photos show that derricks were even located amidst residences in Mooringsport. Obviously, the boom meant a considerable influx of population. In 1910 Mooringsport was incorporated, and in 1911 the original portion of the school was built. This two story brick structure with four large classrooms replaced a one room frame building. Undoubtedly the considerable 1921 addition and the smaller 1927 addition were needed due to the stresses made on the school system by oil boom growth. One elderly resident recalls that the school was so overcrowded at one point that students had to be taught in the old frame building which had been moved across the street.

In a larger context, it should be noted that this transition from frame school buildings to “modern” brick facilities is a recognizable chapter in the history of public education in the state, with the latter universally by their very nature considered to be better. The *Annual Report of the State Department of Education in Louisiana* for 1924-25 bragged that the number of brick school buildings in the state had grown from 40 in 1900 to 388 in 1925. By way of explanation, the report noted: “In the earlier years the custom was to erect cheap frame buildings. The custom now is to use permanent materials. . . .” The new schools were typically hailed with the phrase “modern brick school.”



**United States Department of the Interior  
National Park Service**

**National Register of Historic Places  
Continuation Sheet**

Mooringsport School, Caddo Parish, LA  
Section number 8 Page 2

---

Building materials aside, even the 1911 two story, four classroom original section of the Mooringsport School brought an expanded physical plant. At least there could be some separation by grade level, and more teachers were hired. The large 1921 expansion brought more classrooms, an auditorium and a science lab. Then more classrooms were added in 1927.

In reference to another "modern brick school" built in another part of the state, an elderly citizen reflected: "We were all amazed at such wonderful facilities for education. . . ." The same would undoubtedly hold true in the oil boom town of Mooringsport as prosperity and population increases meant a considerable leap forward for education -- from a one room frame school in 1910 when the town was incorporated to a large two story brick facility by 1927 with numerous classrooms and other educational amenities.

**United States Department of the Interior  
National Park Service**

**National Register of Historic Places  
Continuation Sheet**

Mooringsport School, Caddo Parish, LA  
Section number  $\frac{9}{10}$  Page  $\frac{1}{1}$

---

**BIBLIOGRAPHY**

**Caddo Parish School Board Records**

Blueprints, Edward F. Neild, Architect. Originals in archives of Somdal Associates, Shreveport, the descendant of Neild, Somdal and Neild. Blueprints are undated but they show three periods of construction. Dates of each phase supplied by Caddo Parish School Board.

Historic photo of Mooringsport School taken between 1921 and 1927, copy in National Register file, Louisiana Division of Historic Preservation.

c. 1906 photo showing a portion of the old frame Mooringsport School, copy in National Register file, Louisiana Division of Historic Preservation.

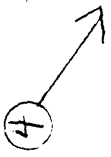
Typescript recollections dated 9/21/91 of Clifton Weston Eastham, who attended Mooringsport's original frame school.

Franks, Kenny A. and Lambert, Paul F. *Early Louisiana and Arkansas Oil*. Texas A & M University Press, 1982.

-----  
Boundary Description: See attached sketch map.

Justification: Boundaries were chosen to encompass the significant resource. They do not follow school property lines because to have done so would have meant including unnecessary acreage and non-contributing elements.

MOORINGSPORE SCHOOL  
CADDOPARISH, LOUISIANA



N →  
1" = 50'



--- BOUNDARY

