



SIOUX Falls Light and Power Co. Hydroelectric  
Plant

SIOUX Falls, SD, MINNEHAWKA CITY

By DON SETEN, OCT 1992; NEGATIVE  
ON FILE @ S.F. Planning DEPT.

REAR (WEST) Facade; VIEW Looking NE.



Sioux Falls Light and Power Co Hydroelectric Plant

Sioux Falls, SD, MINNEAPOLIS CITY

By DON SETEN, OCT 1992; NEG. on file  
@ S.F. Planning Dept

View looking North westerly  
General site photo



51041 Falls Light and Power Co Hydroelectric Plant

5104X Falls, SD. MINNEHAWA CITY

By DON SETEN; OCT 1992; NEG on file @  
S.F. PLANNING DEPT.

Bldg's West Elev (looking East)



SIoux Falls Light and Power Company  
Hydro Electric Plant

SIoux Falls, S.D., MINNETIAMA CRY

By DON SETEN; OCT 1992

NEG on file @ S.F. Planning DEPT.

BLDG'S SO. ELEVATION, VIEW LOOKING  
NORTH





SIoux Falls Light and Power CO. Hydroelectric Plant

SIoux Falls, SD, MINNEHAWHA CTY

By DON SETEN, OCT 1992; neg 15 on  
File @ S.F. Planning Dept.

WEST ELEV. (<sup>view</sup> Looking Easterly)



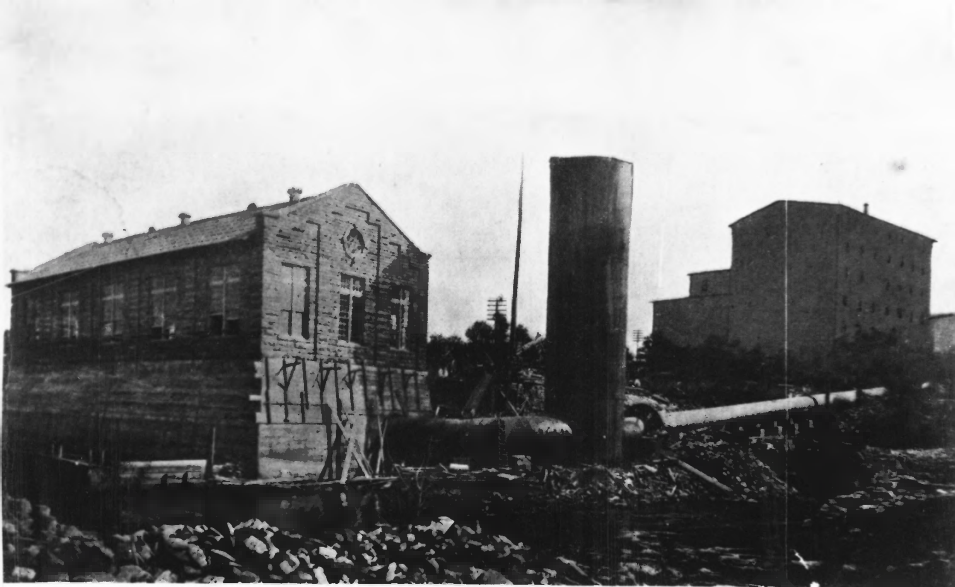
SIoux FALLS STATION, GENERAL VIEW  
LOOKING NORTHEAST

SIoux Falls Light and Power CO Hydroelectric Plant

SIoux Falls, SD, MINNEAPOLIS CITY

By DAN SETEN; OCT 1992; NEG on file @  
SIoux Falls Planning DEPT.

copy of ca 1940 photo from NSP files;  
orig. photo is "doctored" to remove  
Morrell's meatpacking plant from background;  
and to help visualize proposed 2nd  
smoke stack + water tower



SIoux FALLS LIGHT & POWER CO. PLANT, SIoux FALLS, S. D.

5104X Falls Light and Power Co. Hydroelectric Plant

5104X Falls, SD. MINNEAPOLIS CITY

By DON SEYEN, OCT 1992; NEG on file (4)  
S.F. Planning Dept.

Historic PHOTO  
Copy of old postcard, undated,  
But from 1908-1913 time period



SIOUX FALLS Light and Power Company HydroElectric  
PLANT

SIOUX FALLS, S.D., MINNEAPOLIS CITY

By DON SETEN, OCT 1992, NEGATIVE  
ON FILE @ S.F. Planning DEPT.

Bldg's No. ELEVATION, VIEW  
Looking SOUTH





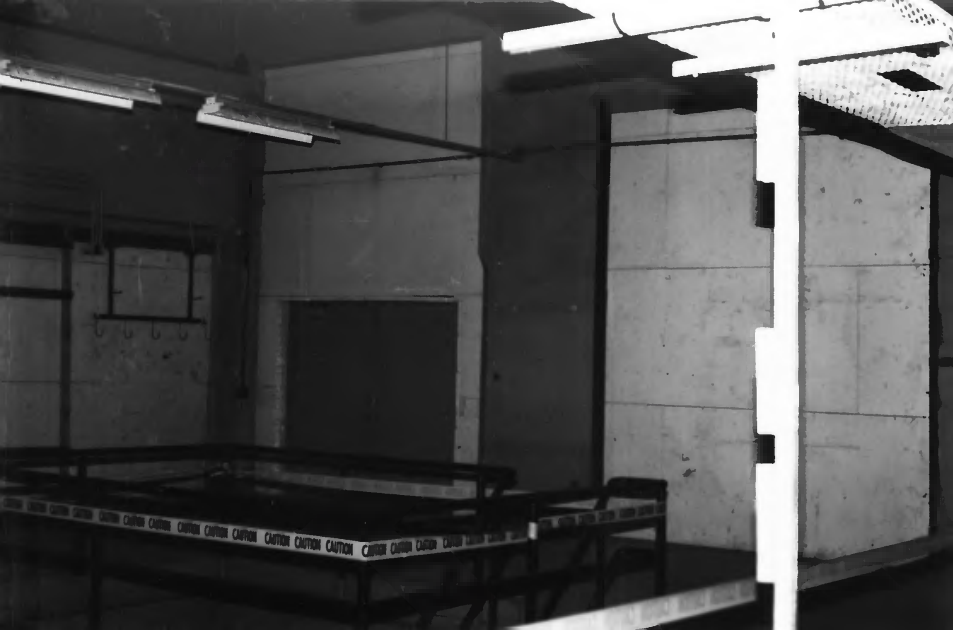
Sioux Falls Light and Power Co. HydroElectric Plant

Sioux Falls, SD, MINNEHAKA CRY

By DON SETEN, OCT 1992; NEG 15  
on file @ S.F. Planning Dept.

FRONT (EAST) Elev,

view looking west



SIoux Falls Light and Power Co. Hydroelectric Plant

SIoux Falls, SD, MINNEAPOLIS CITY

By DON JETSON, OCT 1992; NEG on file @  
S.F. planning DEPT.

Interior, looking N.E.

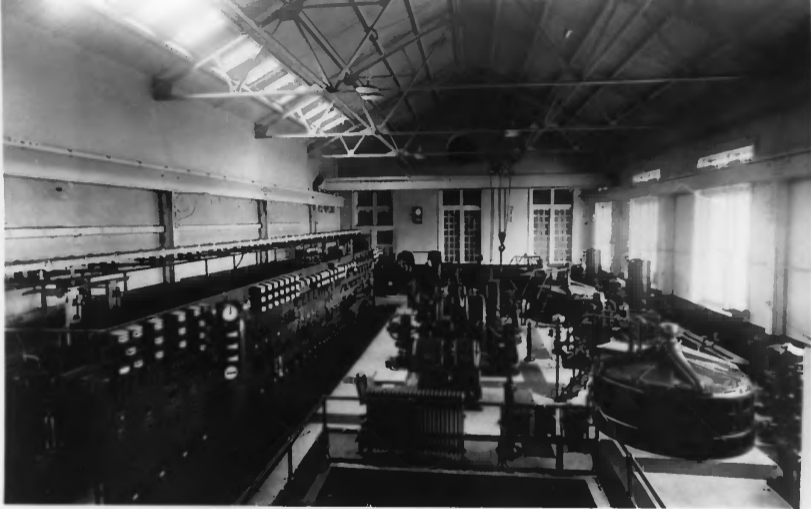


SIOUX FALLS LIGHT AND POWER CO. HYDROELECTRIC PLANT

SIOUX FALLS, SD, MINNESOTA CITY

By DON JETEN, OCT 1992, NEG. ON FILE @  
S.F. Planning DEPT.

INTERIOR, looking WEST



Sioux Falls Hydro Plant. Generator floor. There are three main generators and a water wheel driven exciter. Three of the four motor-generator sets were 500 volt railway sets with a combined capacity of 600 kilowatts. The small set in the foreground was a 50 kilowatt exciter. Picture was taken about 1920.

Stouax Falls Light and Power Co. Hydroelectric Plant

Stouax Falls, SD, MINNEAPOLIS CITY

By Don Jensen, Oct 1972; NEG. ON FILE  
@ S.F. Planning Dept.

Historic photo from 1920, from NSP  
files; Hydro plant interior looking  
west. note skylights.



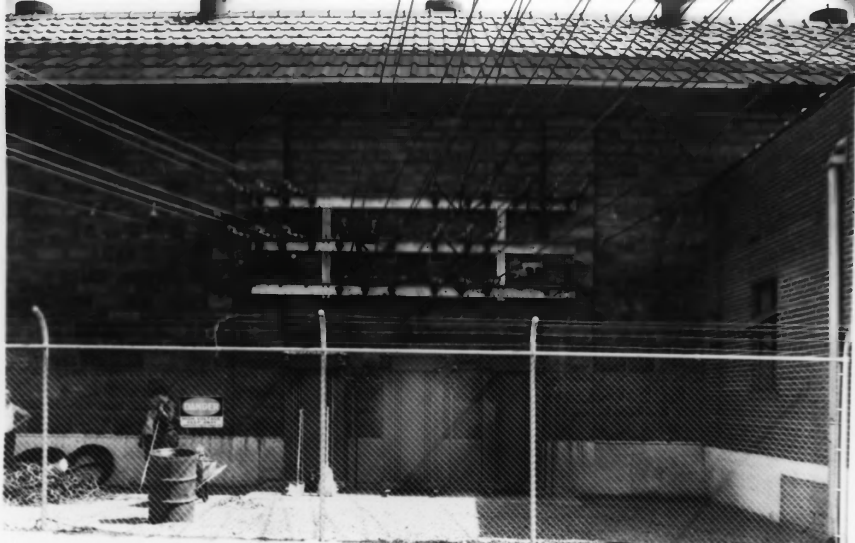


Sioux Falls Light and Power Co. Hydroelectric Plant

Sioux Falls, SD, MINNEAPOLIS CITY

By DON SETEN, OCT 1992, NEG on file  
at S. F. Planning DEPT

Bldg interior, looking East



Exp. Order 7-8 July 18, 1938  
NORTHERN STATES POWER CO.  
PROJECT NO.  
CLOUD FALLS STEAM PLANT  
New 4 K.V. Terminal  
Structure - PING1

Sioux Falls Light and Power Co. HydroElectric Plant

Sioux Falls, SD, MINNEAPOLIS CITY

By DON SETEN; OCT 1992; NEG. on file @  
Sioux Falls Planning DEPT.

Historic photo from NSP files;  
South Elev (looking north)



H.M. BYLLESBY & Co.  
ENGINEERS  
CHICAGO 1908

SIoux Falls Light and Power CO. HydroElectric Plant

SIoux Falls, SD, MINNEAPOLIS CITY

By DON SETEN, OCT 1992; NEG. ON FILE @  
S.F. Planning DEPT

DEDICATION plaque, on South Elevation



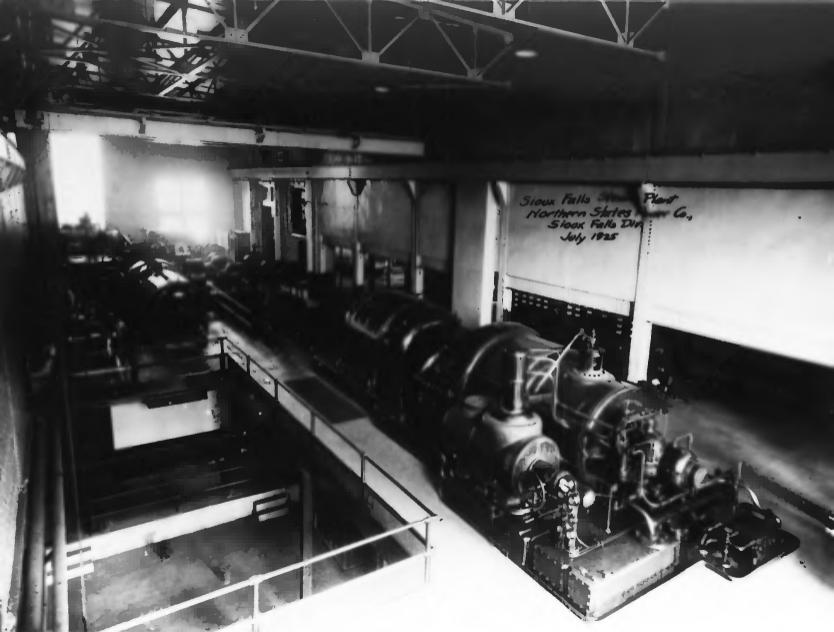
Sioux Falls Light and Power Co HYDROELECTRIC PLANT

Sioux Falls, SD, MINNETONKA CITY

By DON SETEN; OCT 1992; NEG on file @  
S.F. Planning Dept

interior; looking East





Sioux Falls Steam Plant  
Northern States Power Co.,  
Sioux Falls Div.  
July 1925

SIOUX FALLS Light and Power CO. HydroElectric PLANT  
SIOUX FALLS, SD, MINNEHATA CTY.

By DON SETEN, OCT 1992; NEGATIVE ON FILE @  
SIOUX FALLS PLANNING DEPT.

HISTORIC PHOTO FROM 1925, OF INSIDE THE  
STEAM PLANT ADDITION, TAKING SOUTH. NOTE  
FRONT (EAST) FACADE OF QUARTZITE HYDRO PLANT  
Bldg LOCATED AT FAR RIGHT-REAR CORNER