



BURWELL HOUSE

US RT 11

RIDGEWAY VIC., BERKELEY CO.,
W.VA.

By: RODNEY S. COLLINS

5/1990

FRONT (N.) ELEV.

LOOKING S.E.

PHOTO 1 OF 8



BURWELL HOUSE
CO. RT. 11, RIDGEWAY vic.
BERKELEY CO., W.VA.

By: RODNEY S. COLLINS, 5/1990

FRONT (NORTH) ELEV,
LOOKING S.E.

PHOTO 2 OF 8



BURWELL HOUSE

US RT 11

RIDGEWAY VIC.

BERKELEY CO., W. VA.

1. James N. Burwell House
2. Vicinity of Ridgeway, WV.
3. Frances Ruth
4. June 1985
5. Courthouse, Martinsburg, WV.
6. South facade of main section and east and south facades of the ell. Note shed roofed, mortise and tenon porch; camera to northwest.
7. ~~Photo #3~~

REAR (S) ELEV.
PHOTO 3 OF 8



BURWELL HOUSE
U.S. RT. 11, RIDGEWAY vic.
BERKELEY CO., W.VA.

By: FRANCES RUTH 6/1985

1. James N. Burwell House
2. Vicinity of Ridgeway, WV.
3. Frances Ruth
4. June 1985
5. Courthouse, Martinsburg, WV.
6. Hip roof entrance porch, probably original;
camera to southeast.
7. ~~Photo #2~~

ENTRANCE DETAIL
PHOTO 4 OF 8

LOOKING S.E.



BURWELL HOUSE
U.S. RT. 11, RIDGEWAY VIC.
BERKELEY Co., W.VA
By: FRANCES RUTH
6/1985

1. James N. Burwell House
2. Vicinity of Ridgeway, WV.
3. Frances Ruth
4. June 1985
5. Courthouse, Martinsburg, WV.
6. Decorative parlor mantel; camera to northeast.
7. ~~Photo #5~~

PARLOR MANTEL
PHOTO 5 OF 8



BURWELL HOUSE
CO. RT. 11, RIDGEWAY vic.
BERKELEY CO., W. VA.
By: FRANCES RUTH

4/85

1. James N. Burwell House
2. Vicinity of Ridgeway, WV.
3. Frances Ruth
4. June 1985
5. Courthouse, Martinsburg, WV.
6. Main-open-well stair of four flights; camera to southwest and up.
7. ~~Photo #1~~

MAIN STAIR

PHOTO 6 OF 8



BURWELL HOUSE

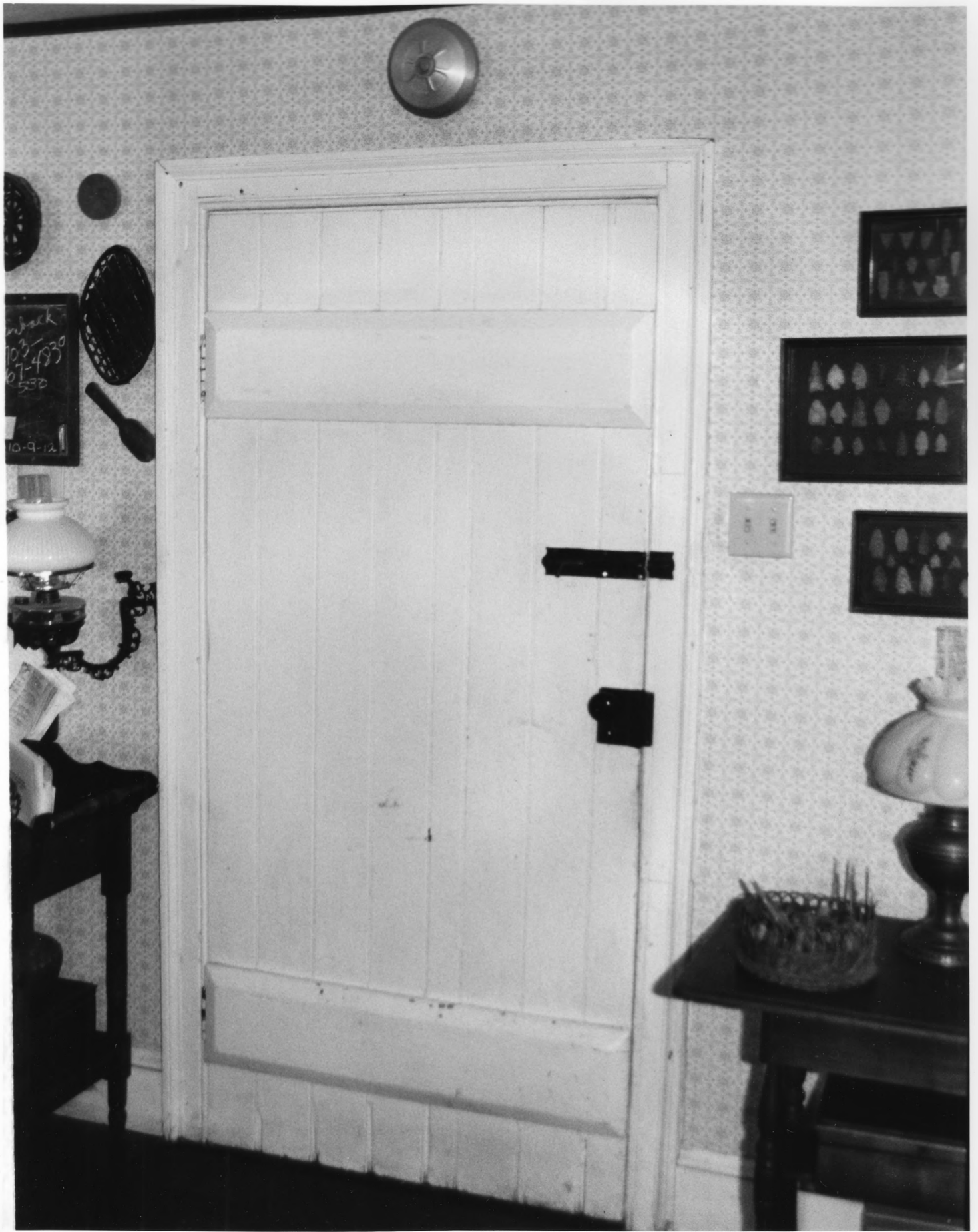
US RTI 11, RIDGEWAY VIC,
BERKELEY CO., W.VA.

by: Frances Ruth

6/1985

1. James N. Burwell House
2. Vicinity of Ridgeway, WV.
3. Frances Ruth
4. June 1985
5. Courthouse, Martinsburg, WV.
6. Dining room mantel with two-tiered, double door cupboard; camera to west.
7. Photo #6

DINING ROOM
PHOTO 7 OF 8



BURWELL HOUSE
US RT. 11, RIDGEWAY VIC.
BERKELEY CO., W. VA.

By: FRANCES RUTH — 6/1985

1. James N. Burwell House
2. Vicinity of Ridgeway, WV.
3. Frances Ruth
4. June 1985
5. Courthouse, Martinsburg, WV.
6. Board-and-batten door with architrave trim
in kitchen of ell.
7. Photo #8

Kitchen Door
PHOTO 8 OF 8
